



# Coastal Wetlands Resources For Building Officials

## Rowley

**Delineation of Coastal Resource Areas  
is determined by the issuing authority,  
pursuant to 310CMR 10.00 (Wetlands  
Protection Act Regulations)**

 Coastal Wetlands Resource Areas  
Other than Land Subject to Coastal  
Storm Flowage (Coastal Flood Plain)

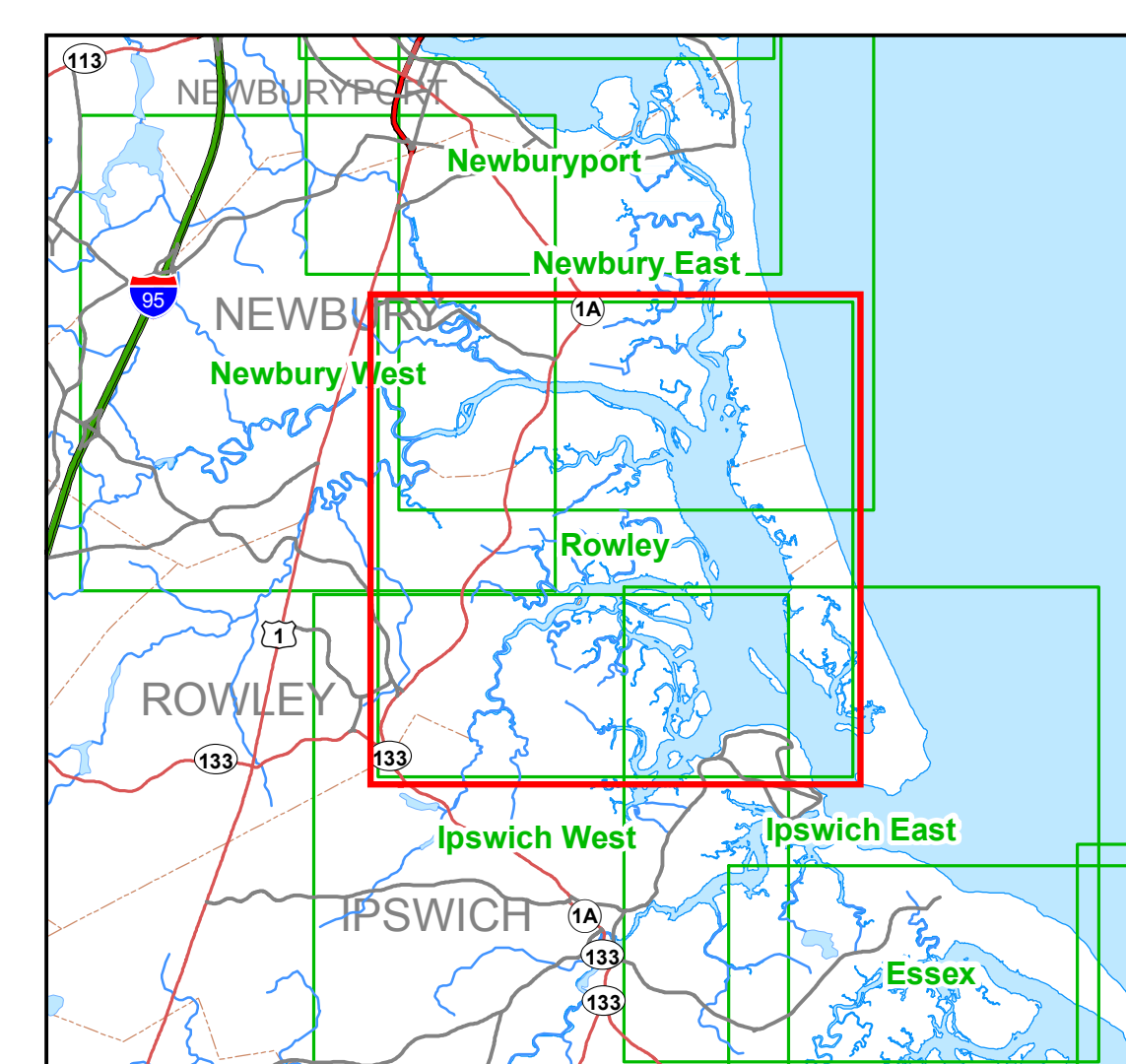
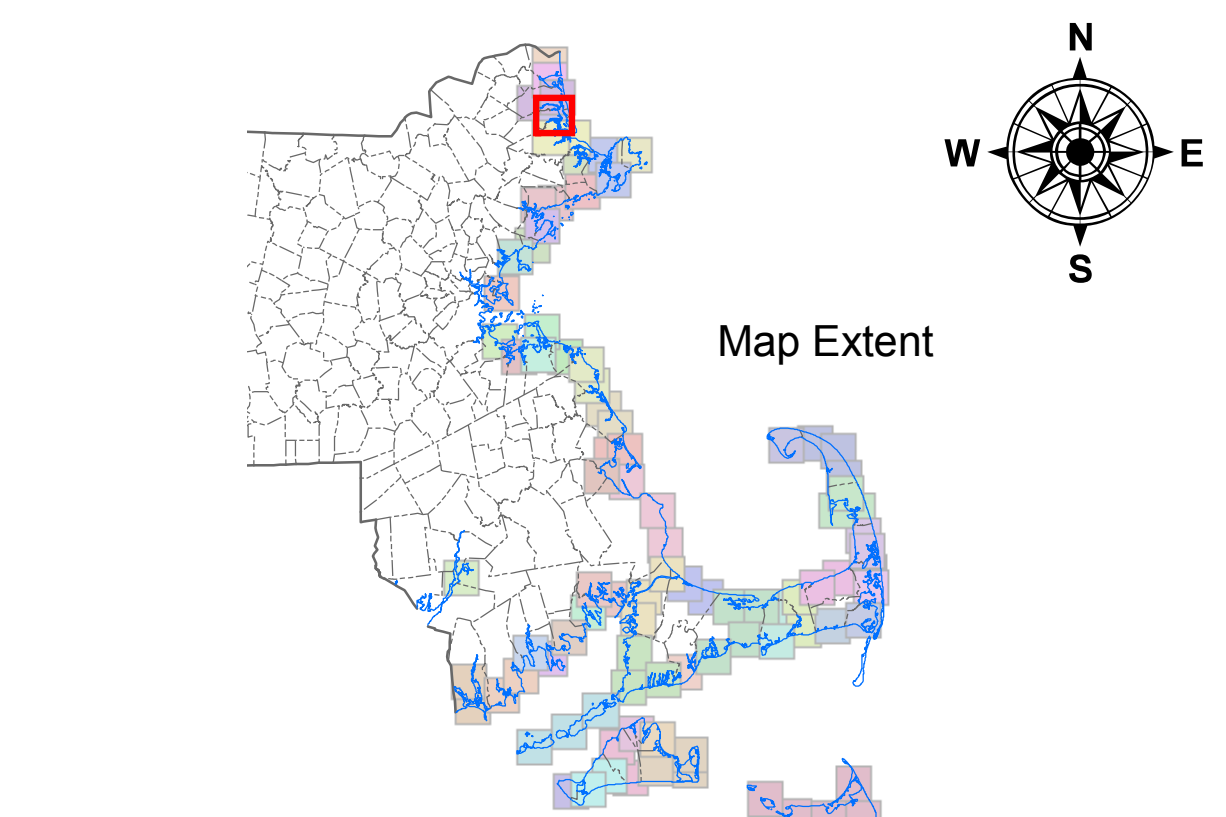
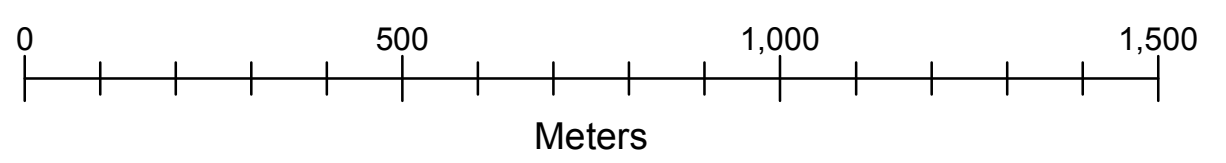
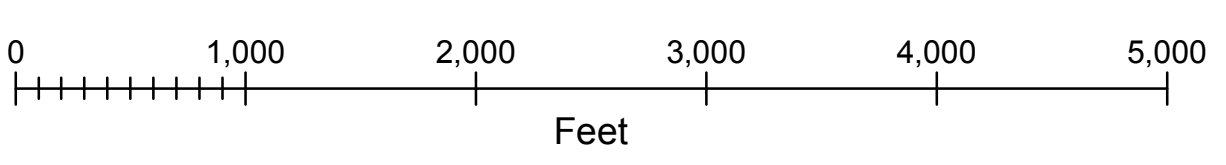
 Municipal Boundaries

Color OrthoPhoto Base Map Date April 2005

Coordinates shown are Mass State Plane NAD83 Feet, FIPS Zone 2001

**Map Scale 1:10,000**

1 Inch = 835 Feet or 255 Meters



Actual map extent shown in **RED**



**Deval Patrick**  
Governor  
**Ian Bowles**  
Secretary of Energy and  
Environmental Affairs

For more information on the data and imagery shown on this  
map visit the MassGIS website at <http://mass.gov/mgis>

Map produced by the MassDEP GIS Program - Robert Hames, Sr GIS Analyst  
G:\MAPS\MAP DOCUMENTS\BBSR\_TOWN\_SERIES.MXD

**May 14, 2008**