



Massachusetts Calendar Year 2015 HAI Data Summary

Statewide Hospital Summary

Release Date: August 2016

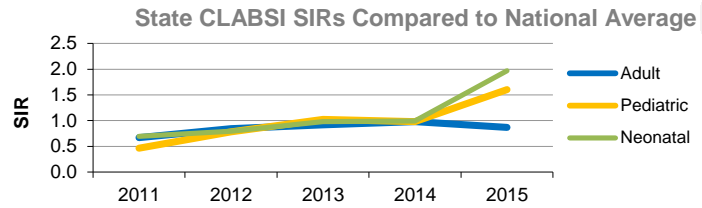
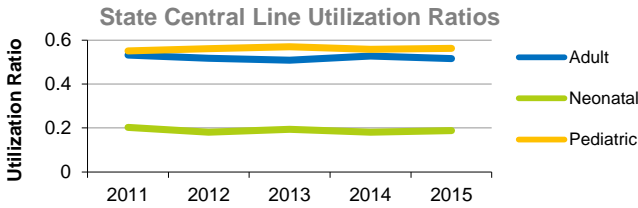
2015 Hospital Survey Statistics

	Small Hospital <100 Beds	Medium Hospital 100-299 beds	Large Hospital 300+ beds
Number of Hospitals	22	34	13
Medical School Affiliation	18%	50%	85%
Average Number of Beds	65	187	547
Average Number of ICU Beds	6	15	90
Average Number of Admissions	3,329	10,638	31,218
Average Number of Patient Days	14,758	45,156	154,193
Beds per Infection Preventionist	67.4	72.2	135.4

Central Line-Associated Blood Stream Infection

CLABSI Rates by ICU Type for 2015, Compared to State Data from 2013-2014

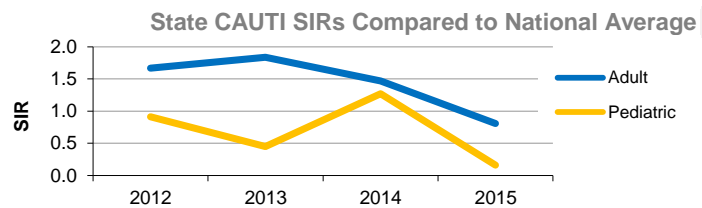
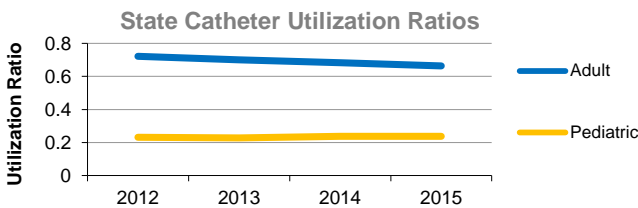
ICU Type	Number of ICUs	Infections	Line Days	Rate	Predicted Infections	SIR	Confidence Interval	Interpretation
Burn	2	6	1,474	4.07	3.69	1.63	0.66 - 3.38	Same
Cardiac	9	14	15,394	0.91	13.85	1.01	0.57 - 1.65	Same
Cardiothoracic	11	15	23,288	0.64	16.30	0.92	0.53 - 1.48	Same
Medical	18	36	35,589	1.01	34.58	1.04	0.74 - 1.42	Same
Medical/Surgical	53	34	56,082	0.61	44.70	0.76	0.53 - 1.05	Same
Neurosurgical	2	2	4,173	0.48	3.34	0.60	0.1 - 1.97	Same
Pediatric	8	30	17,610	1.70	18.78	1.60	1.09 - 2.25	Higher
Surgical	14	25	33,711	0.74	32.83	0.76	0.50 - 1.10	Same
Trauma	3	2	4,561	0.44	5.47	0.37	0.06 - 1.20	Same
Neonatal	10	37	16,945	2.18	18.81	1.97	1.40 - 2.68	Higher



Catheter-Associated Urinary Tract Infection

CAUTI Rates by ICU Type for 2015, Compared to State Data from 2013-2014

ICU Type	Number of ICUs	Infections	Catheter Days	Rate	Predicted Infections	SIR	Confidence Interval	Interpretation
Burn	2	3	1,156	2.60	4.97	0.60	0.15 - 1.64	Same
Cardiac	9	26	15,813	1.64	30.04	0.87	0.57 - 1.25	Same
Cardiothoracic	11	12	24,728	0.49	39.56	0.30	0.16 - 0.51	Lower
Medical	18	67	44,090	1.52	88.34	0.76	0.59 - 0.95	Lower
Medical/Surgical	54	99	81,582	1.21	51.97	1.91	1.55 - 2.30	Higher
Neurosurgical	2	31	6,502	4.77	28.61	1.08	0.74 - 1.51	Same
Pediatric	8	3	7,434	0.40	0.34		Not calculable	
Surgical	14	98	42,778	2.29	111.22	0.88	0.71 - 1.06	Same
Trauma	3	40	7,258	5.51	24.68	1.62	1.17 - 2.18	Higher

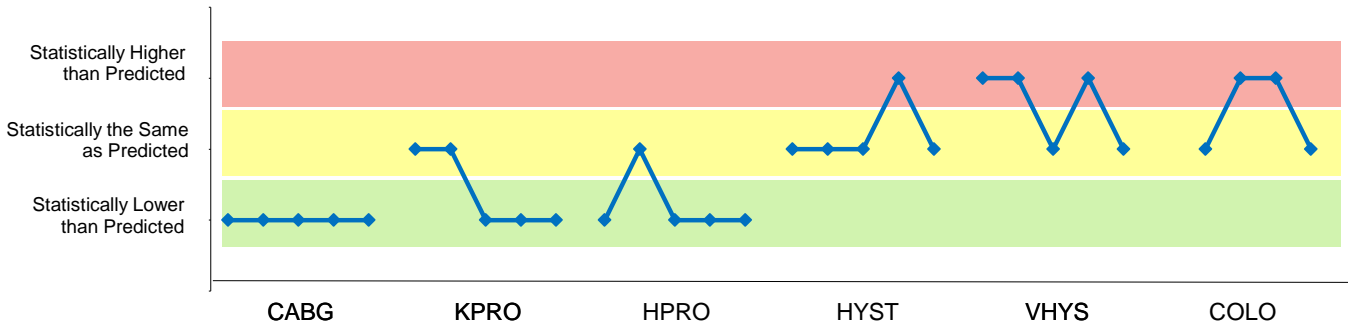


Surgical Site Infection

State SSI SIRs by Procedure Type for 2015 Calendar Year

Procedure	Hospitals Reporting	Infections	Procedures	Predicted Infections	SIR	Confidence Interval	Interpretation
Coronary Artery Bypass (CABG)	14	31	3,970	49.89	0.62	0.43 - 0.87	Lower
Knee Prosthesis (KPRO)	59	57	16222	87.82	0.65	0.49 - 0.83	Lower
Hip Prosthesis (HPRO)	59	64	12804	96.75	0.66	0.51 - 0.83	Lower
Abdominal Hysterectomy (HYST)	55	43	5115	40.1	1.07	0.78 - 1.43	Same
Vaginal Hysterectomy (VHYS)	53	11	1640	8.78	1.25	0.65 - 2.17	Same
Colon (COLO)	63	223	6848	204.13	1.09	0.95 - 1.24	Same

Statistically Significant Variation from Predicted Number of Surgical Site Infections, 2011-2015



Facility Wide LabID Events

State CDI and MRSA SIRs for 2015 Calendar Year

Event	Hospitals Reporting	Events	Patient Days	Predicted Events	SIR	Confidence Interval	Interpretation
Clostridium difficile (CDI)	68	2,771	3,393,447	2,832	0.98	0.94 - 1.01	Same
Methicillin-resistant Staphylococcus (MRSA)	68	180	3,694,486	239	0.75	0.65 - 0.87	Lower

Statistically Significant Variation from Predicted Number of LabID Events, 2013-2015

