

# Massachusetts Calendar Year 2016 HAI Data Summary

Release Date: September 2017



## Statewide Hospital Summary

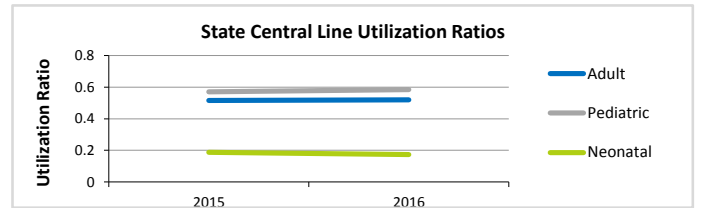
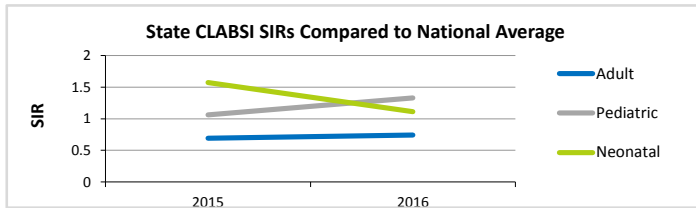
### 2016 Hospital Survey Statistics

	Small Hospital <i>&lt;100 Beds</i>	Medium Hospital <i>100-299 Beds</i>	Large Hospital <i>300+ Beds</i>
Number of Hospitals	22	36	13
Medical School Affiliation	23%	61%	85%
Average Number of Beds	58	184	544
Average Number of ICU Beds	5	14	90
Average Number of Admissions	3,003	10,306	32,272
Average Number of Patient Days	12,602	49,663	161,430
Beds per Infection Preventionist	54.9	128.7	136.6

### Central Line-Associated Blood Stream Infection

CLABSI SIRs by ICU Type for 2016 Calendar Year

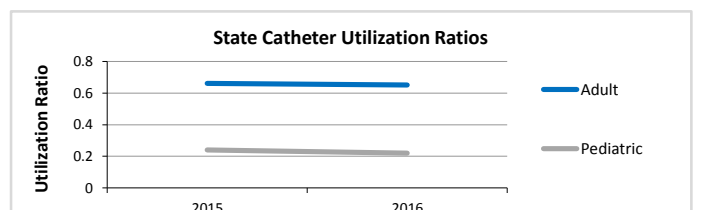
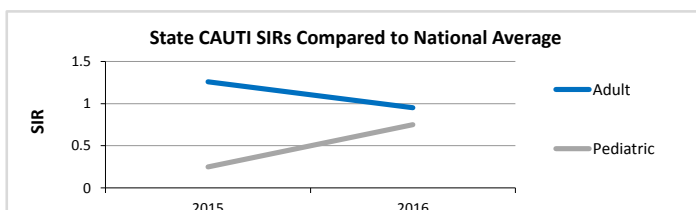
ICU Type	Number of ICUs	Infections	Central Line Days	Predicted Infections	SIR	Confidence Interval	Interpretation
Burn	1	9	1,228	4.17	2.16	(1.05 - 3.96)	Higher
Cardiac	8	14	13,882	15.17	0.92	(0.52 - 1.51)	Same
Cardiothoracic	11	21	23,921	26.26	0.80	(0.50 - 1.20)	Same
Medical (major teaching)	15	29	33,096	37.17	0.78	(0.53 - 1.10)	Same
Medical (not major teaching)	4	2	3,132	2.53	0.79	(0.13 - 2.61)	Same
Medical/Surgical (major teaching)	12	8	19,636	21.48	0.37	(0.17 - 0.70)	Lower
Medical/Surgical (not major teaching)	40	21	33,363	27.02	0.78	(0.49 - 1.16)	Same
Neurosurgical	3	4	4,751	5.36	0.75	(0.23 - 1.80)	Same
Pediatric	9	43	20,057	32.31	1.33	(0.97 - 1.77)	Same
Surgical	14	20	30,930	34.12	0.59	(0.36 - 0.88)	Lower
Trauma	3	5	4,468	6.83	0.73	(0.26 - 1.62)	Same
Neonatal	10	26	16,389	23.34	1.11	(0.74 - 1.60)	Same



### Catheter-Associated Urinary Tract Infection

CAUTI SIRs by ICU Type for 2016 Calendar Year

ICU Type	Number of ICUs	Infections	Catheter Days	Predicted Infections	SIR	Confidence Interval	Interpretation
Burn	1	2	1,084	3.71	0.54	(0.09 - 1.78)	Same
Cardiac	8	24	13,830	20.97	1.14	(0.75 - 1.67)	Same
Cardiothoracic	11	25	24,623	30.66	0.82	(0.53 - 1.18)	Same
Medical (major teaching)	15	41	36,697	48.64	0.84	(0.61 - 1.13)	Same
Medical (not major teaching)	4	4	5,238	4.14	0.97	(0.30 - 2.33)	Same
Medical/Surgical (major teaching)	12	22	25,195	31.01	0.71	(0.45 - 1.05)	Same
Medical/Surgical (not major teaching)	40	45	51,577	41.66	1.08	(0.79 - 1.43)	Same
Neurosurgical	3	30	7,401	26.24	1.14	(0.78 - 1.61)	Same
Pediatric	9	9	7,610	12.07	0.75	(0.36 - 1.36)	Same
Surgical	14	62	39,401	70.50	0.88	(0.68 - 1.12)	Same
Trauma	3	26	6,759	18.53	1.40	(0.93 - 2.02)	Same



# Massachusetts Calendar Year 2016 HAI Data Summary

Release Date: September 2017

## Statewide Hospital Summary

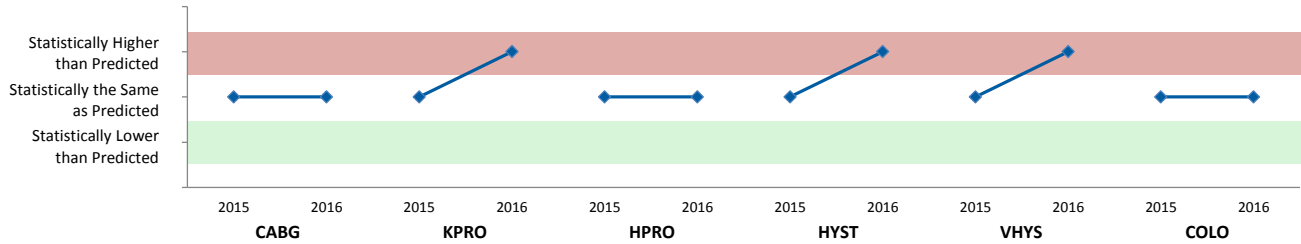


### Surgical Site Infection

SSI SIRs by Procedure Type for 2016 Calendar Year

Procedure	Hospitals Reporting	Infections	Procedures	Predicted Infections	SIR	Confidence Interval	Interpretation
Coronary Artery Bypass Graft (CABG)	14	23	4,114	32.56	0.71	(0.45 - 1.04)	Same
Knee Prosthesis (KPRO)	60	76	16,993	53.79	1.41	(1.12 - 1.75)	Higher
Hip Prosthesis (HPRO)	59	83	12,780	69.21	1.20	(0.96 - 1.47)	Same
Abdominal Hysterectomy (HYST)	54	46	4,550	32.26	1.43	(1.05 - 1.88)	Higher
Vaginal Hysterectomy (VHYS)	51	21	1,607	9.38	2.24	(1.42 - 3.36)	Higher
Colon Surgery (COLO)	62	158	7,128	176.59	0.89	(0.76 - 1.04)	Same

Statistically Significant Variation from Predicted Number of Surgical Site Infections, 2015 -2016



### Facility Wide LabID Events

CDI and MRSA SIRs for 2016 Calendar Year

Event	Hospitals Reporting	Infections	Patient Days	Predicted Infections	SIR	Confidence Interval	Interpretation
<i>Clostridium difficile</i> (CDI)	70	2,372	3,411,628	2,509	0.95	(0.90 - 0.98)	Lower
Methicillin-resistant <i>Staphylococcus aureus</i> (MRSA)	70	123	3,700,493	206	0.60	(0.49 - 0.70)	Lower

Statistically Significant Variation from Predicted Number of LabID Events, 2015-2016

