



MASSACHUSETTS DEPARTMENT OF
CONSERVATION AND RECREATION



Brook Farm Historic Site Resource Management Plan

Public Meeting, March 4, 2026



Commonwealth of Massachusetts

Governor

Maura T. Healey

Lieutenant Governor

Kimberly Driscoll

Energy and Environmental Affairs Secretary

Rebecca L. Tepper

Department of Conservation and Recreation Commissioner

Nicole LaChapelle

dcr
Massachusetts



DCR MISSION

To protect, promote and enhance our
common wealth of natural, cultural
and recreational resources
for the well-being of all

DCR Core Principles

Our Core Principles:

Provide access to a diversity of outdoor recreational experiences & unique landscapes

that is equitable, inclusive, and welcoming



Conserve lands, water, and forests

by integrating science, research, and technical expertise into the management of our natural resources

Advance climate change mitigation and adaptation efforts

by implementing sustainable practices & advancing resiliency across our infrastructure, assets, & resources



Support healthy communities

by providing places for people to connect with nature and each other

Inspire generations of stewards

by recognizing and honoring our legacy through partnerships, public engagement, and education



Meeting Logistics



During the meeting:

- ▶ Use Q&A feature – comments go to moderator
- ▶ Raise your hand using the Zoom function, and you will be given permissions to unmute and speak

After the meeting, through April 3:

- ▶ DCR Public Comments
<https://www.mass.gov/forms/dcr-public-comments>

Please note that this public meeting is being recorded; the recording will be a public record

Tonight's Meeting

- ▶ RMP Mandate and Required Elements
- ▶ Project Timeline
 - ▶ RMP & Conceptual Design
- ▶ Brook Farm RMP
 - ▶ Key Resources
 - ▶ Sample Findings
- ▶ Public Comment



Trail connection to Millenium Park
Blue Heron Trail

RMP Mandate



Outcrop of Roxbury Conglomerate

M.G.L. c. 21 § 2F

“The Commissioner of Conservation and Recreation shall submit management plans to the Stewardship Council with respect to all reservations, parks, and forests under the management of the department...”

Required Elements

Said management plans shall:

- Include guidelines for operation and land stewardship;
- Provide for the protection and stewardship of natural and cultural resources; and
- Ensure consistency among recreation, resource protection, and sustainable forest management



Required Elements (continued)



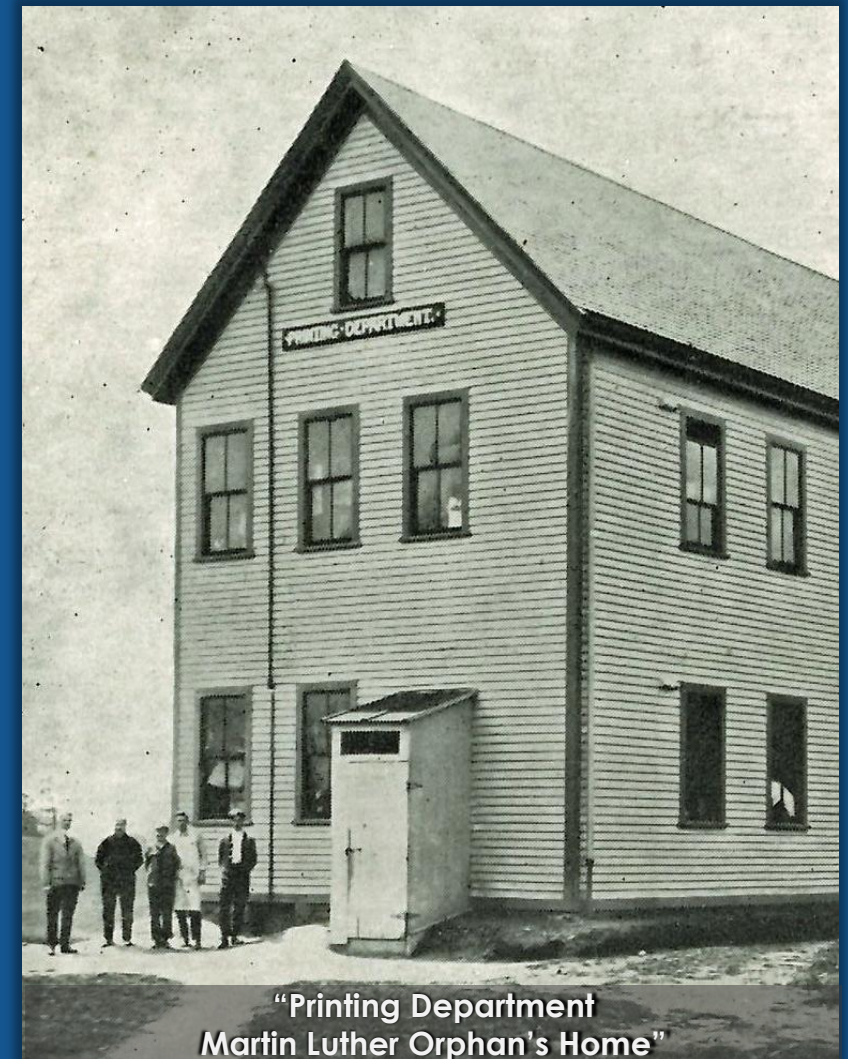
304 CMR 7.02 (Management Plans & Massachusetts Wildlands):

Management planning process shall produce:

- Description of unique resources;
- Discussion of land's potential use;
- Land Stewardship Zoning analysis; and
- Action Recommendations

Project Timeline

- ▶ Public meeting - July 31, 2025
- ▶ Site Visits - August–November
 - ▶ Print Shop structural survey
 - ▶ Tree assessment
 - ▶ Invasive species management plan
 - ▶ Property survey
 - ▶ Encroachment survey
- ▶ Development of RMP & Conceptual Design - 2025–2026
- ▶ NHESP review - January 2026
- ▶ Release of draft RMP - February 25, 2026



"Printing Department
Martin Luther Orphan's Home"

Project Timeline (continued)

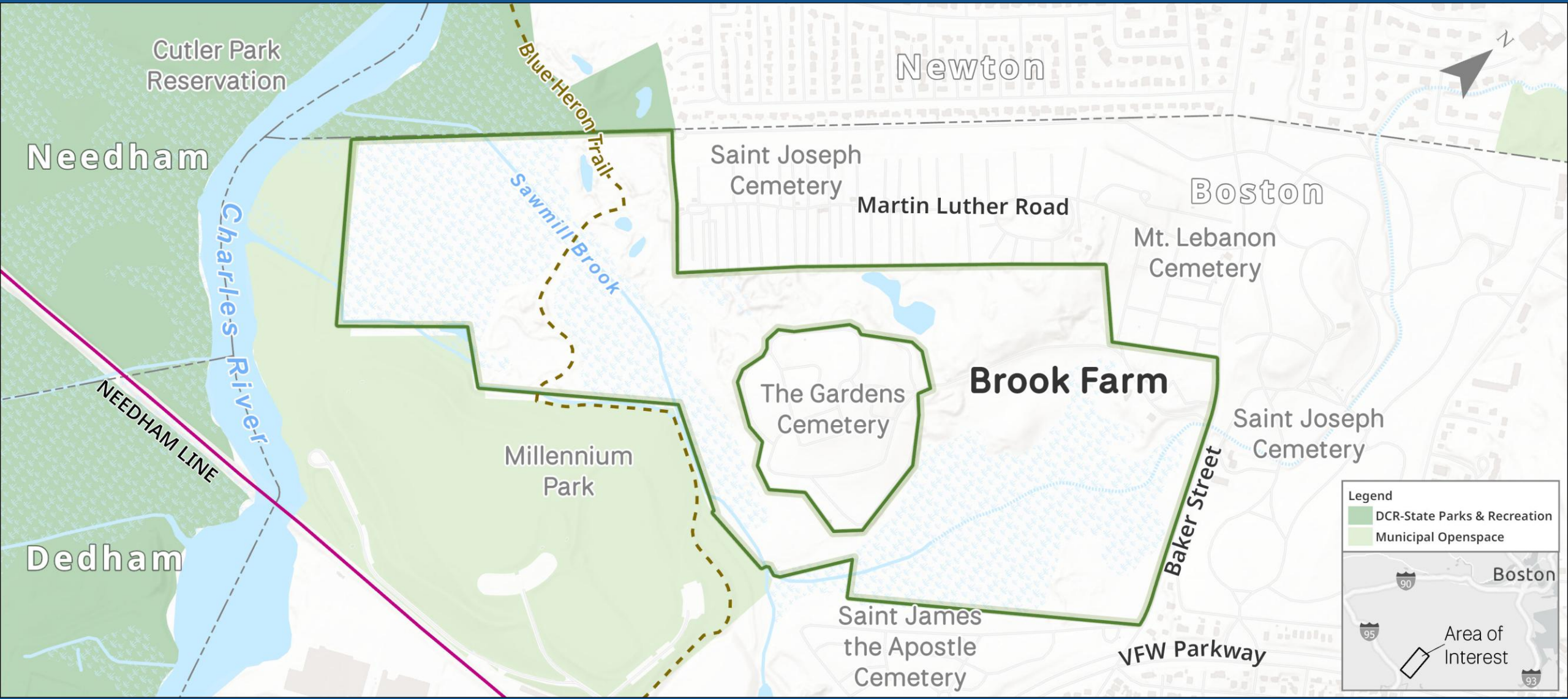


Camp Andrew munitions storage magazine

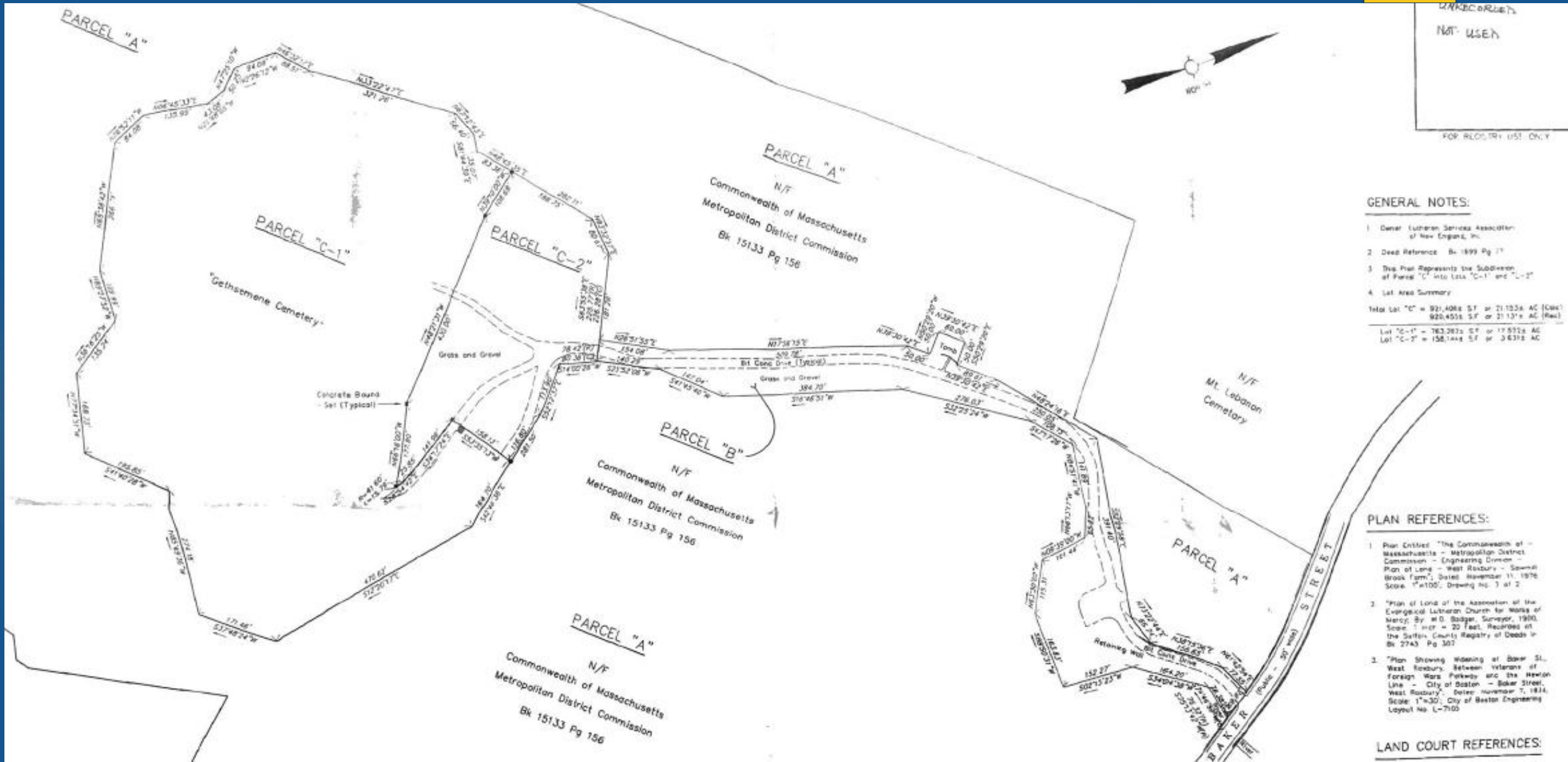
- ▶ RMP public meeting – March 4, 2026
- ▶ Public Comment Period - through April 3, 2026
- ▶ Conceptual Design public meeting – March/April 2026*
- ▶ Accessibility review – March/April*
- ▶ Finalization of preferred Conceptual Design - May*
- ▶ Presentation of RMP to Stewardship Council - May 2026*

*Subject to change

Brook Farm Historic Site



Brook Farm Historic Site - Ownership



Key Resources

Metric	Value
Area (acres)	145.8
Landscape Designation	Parkland
Rare Species	2 State; 0 Federal
Cultural Resources	29 total 12 on National Register 1 National Historic Landmark
Recreation	Bicycling, mountain Dog walking, on leash Heritage tourism Hiking/Walking Nature study/photography Running/Jogging Skiing, cross-country Snowshoeing Wildlife viewing



Common Issues



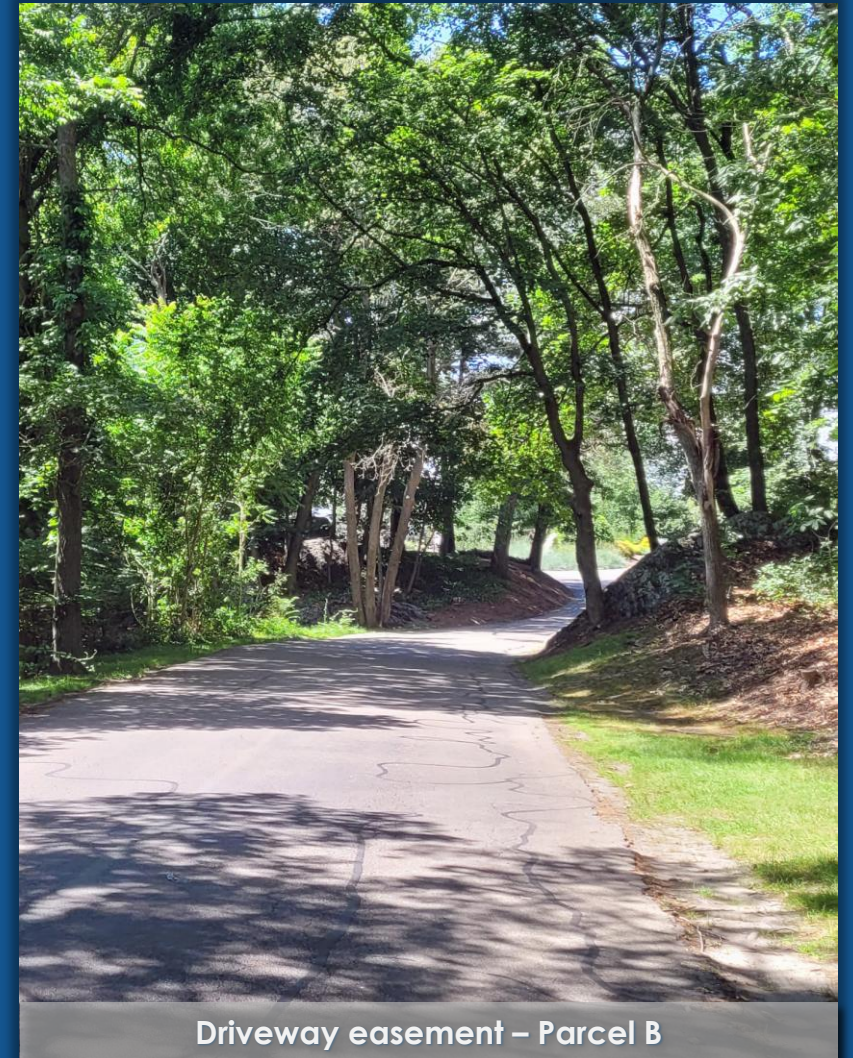
Stream crossing along Blue Heron Trail

- ▶ Resolution of potential encroachments
- ▶ Trails: review, close unauthorized, update map
- ▶ Regulatory compliance and training needs
- ▶ Lack of physical and programmatic accessibility
- ▶ Need to update web content

Natural Resources, Part 1

Ownership and Easements

- ▶ Develop agreement with Cemetery to define roles and responsibilities (“Parcel B”)
- ▶ Complete boundary survey and establish monuments at property boundaries; execute MOUs clarifying access, cleanup, and event parking responsibilities
- ▶ Develop and implement a cemetery-edge BMP plan related to no-dump zones, spill prevention for mowing, and vegetated screens at drift points



Driveway easement – Parcel B

Natural Resources, Part 2



Japanese knotweed surrounding the Print Shop

Invasive Plants

- ▶ Following appropriate review and permitting, implement the Invasive Plant Management Plan for aquatic and terrestrial invasive plants
Maintain actions as needed
- ▶ Rebuild native understory in treated invasive areas
- ▶ Control knotweed and tree of Heaven impacting the historic Print Shop and archaeological sites
- ▶ Conduct an arborist risk assessment and complete priority structural pruning/removals along paths and cemetery edges; set a 3–5 yr cycle

Natural Resources, Part 3

Wetland Resources

- ▶ Prepare a Habitat Management Plan for Brook Farm's state-listed aquatic species
- ▶ Assess trails within 50 feet of vernal pools for rerouting or removal
- ▶ Survey, document, and submit documentation to certify potential vernal pools
- ▶ Implement climate resilience actions: retain flood storage, stabilize micro-erosion sites, and add nature-based solutions, green infrastructures and wetland crossings that meet stream continuity and floodplain mitigation standards, etc.



View to Sawmill Brook

Cultural Resources



Protect and Enhance Cultural Sites

- ▶ Control invasive species within significant feature overlay; protect stonework, cellar holes, and foundations
- ▶ Establish training for staff and partners on state regulations
- ▶ Stabilize the c.1890 Print Shop; prepare reuse concept and funding options
- ▶ Develop a unified interpretive plan (Indigenous, Utopian, Civil War/Camp Andrew, Orphanage/Lutheran); integrate with trail nodes and Print Shop
- ▶ Explore options to enhance research/interpretation of Camp Andrew area

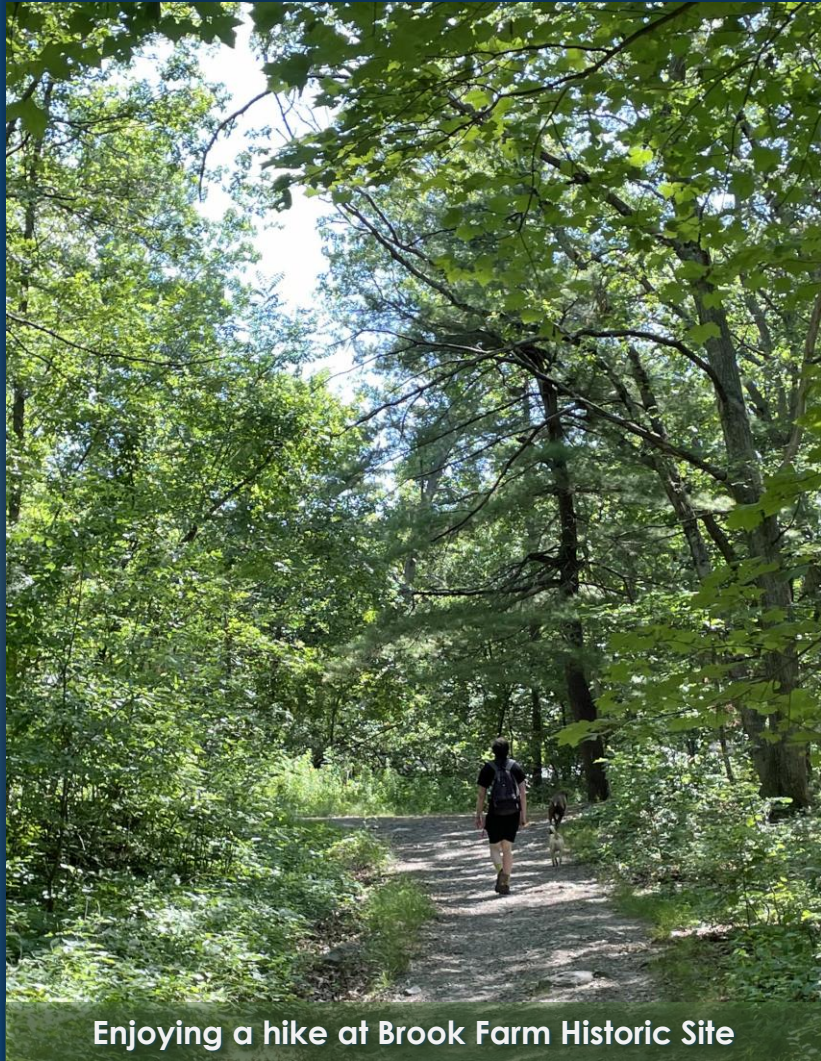
Recreation, Part 1

Visitor Experience

- ▶ Deliver a unified access & wayfinding package
- ▶ Update DCR web page & downloadable map/brochure
- ▶ Create accessible parking and a defined accessible route to key viewpoint(s) and interpretive nodes; consider separating DCR access from cemetery access



Recreation, Part 2



Enjoying a hike at Brook Farm Historic Site

Access

- ▶ Assess trails, develop and implement a sustainable trail plan in accordance with Trails Guidelines and Best Practices
- ▶ Promote EEA's Environmental Justice Policy goals
- ▶ Resolve potential encroachment in accordance with Agency-wide guidance and BMPs
- ▶ Work with the geocaching community to ensure that caches are re-located away from sensitive natural and cultural resources
- ▶ Increase awareness of leash regulation and enhance enforcement with consistent signage, dog-waste stations, and seasonal ranger/volunteer presence
- ▶ Coordinate seasonal volunteer days for trail work, invasive pulls, and post-storm litter removal

Public Comment

General Guidelines

- ▶ Raise your virtual hand
- ▶ Please wait to be recognized by the moderator
- ▶ Please state:
 - ▶ Affiliation (if speaking on behalf of a group)
 - ▶ Property/Properties on which you are commenting
- ▶ To assist us, please make comments in the context of what resources or issues DCR should address during the Resource Management Planning process

Additional Information

- ▶ Draft RMP is available for review at:

<https://www.mass.gov/info-details/draft-resource-management-plan-brook-farm-historic-site>

- ▶ Recording and tonight's slide deck will be available at:

<https://www.mass.gov/dcr-public-meetings-information>

- ▶ If you have comments on this project:

- ▶ *Submit online:* <https://www.mass.gov/forms/dcr-public-comments>

- ▶ *Deadline: **April 3, 2026***

Please note: the contents of comments submitted to DCR, including your name, town and zip code, will be posted on DCR's website. Additional contact information provided, notably email address, will only be used for outreach on future updates to the subject project or property

- ▶ If you wish to subscribe to a DCR general information or project-related listserv: contact DCR's Office of Community Relations via email at mass.parks@mass.gov

Thank you!

