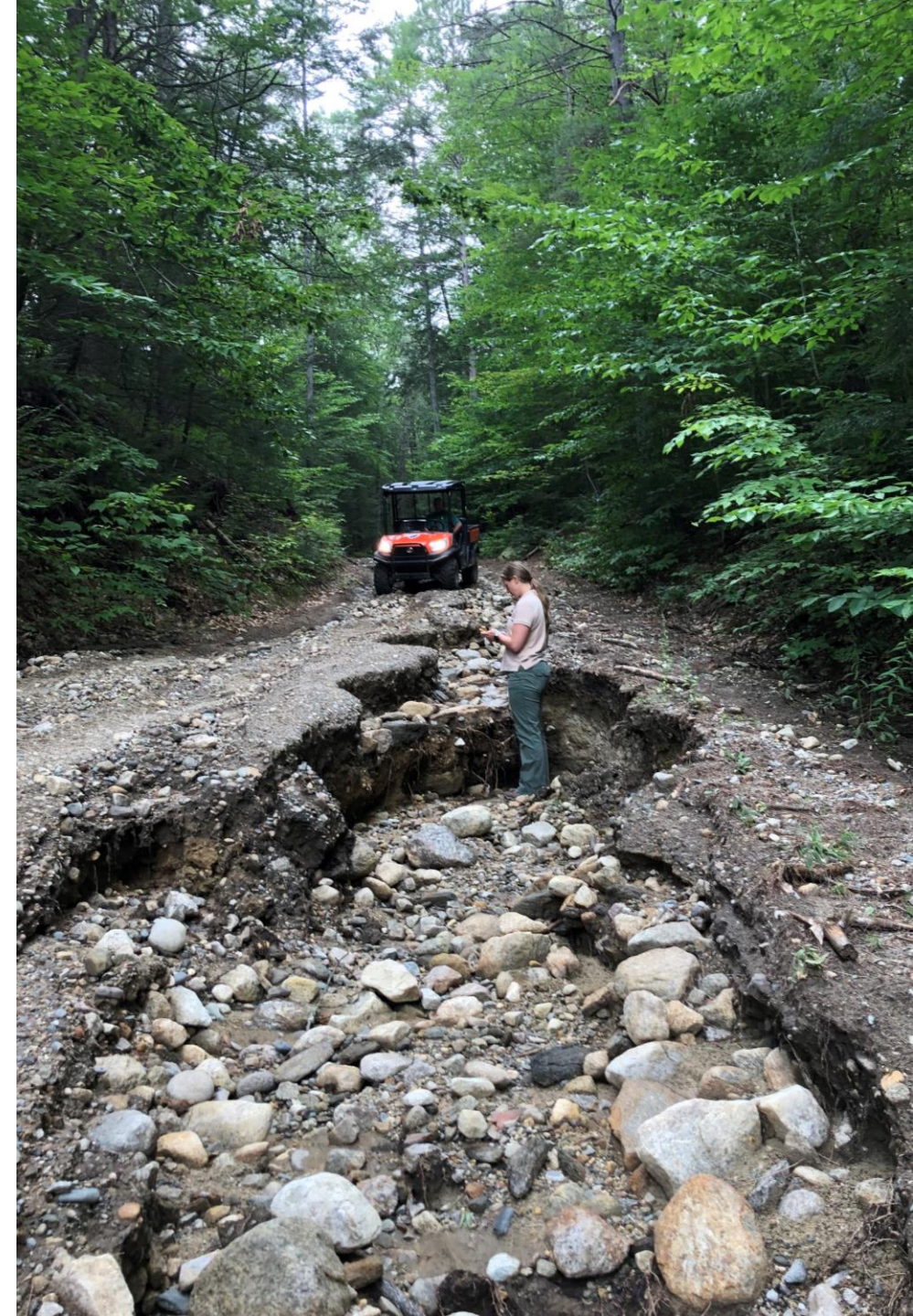


WHAT IS...CLIMATE CHANGE

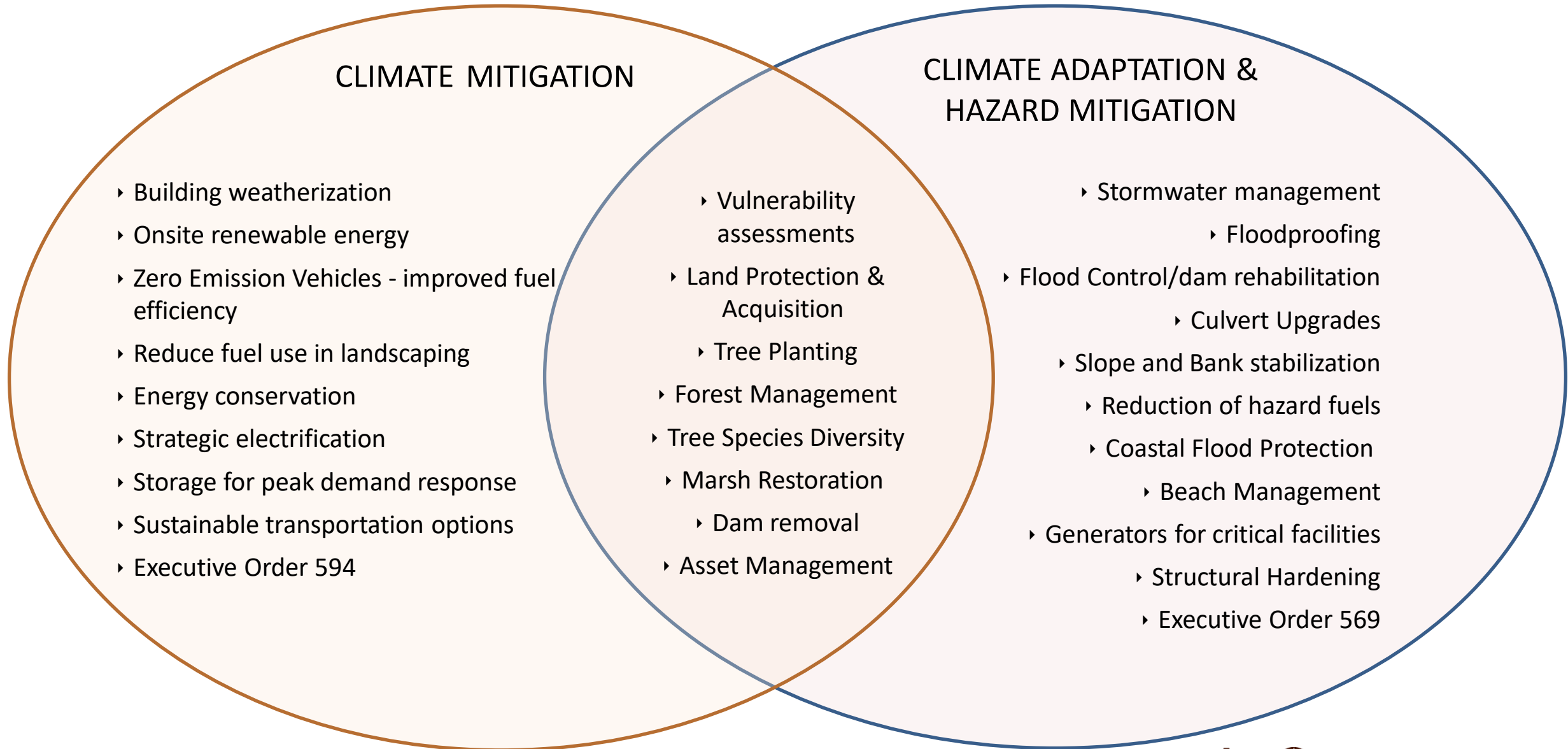
According to the 2018 Massachusetts Integrated State Hazard Mitigation and Climate Adaptation Plan (SHMCAP), climate change is

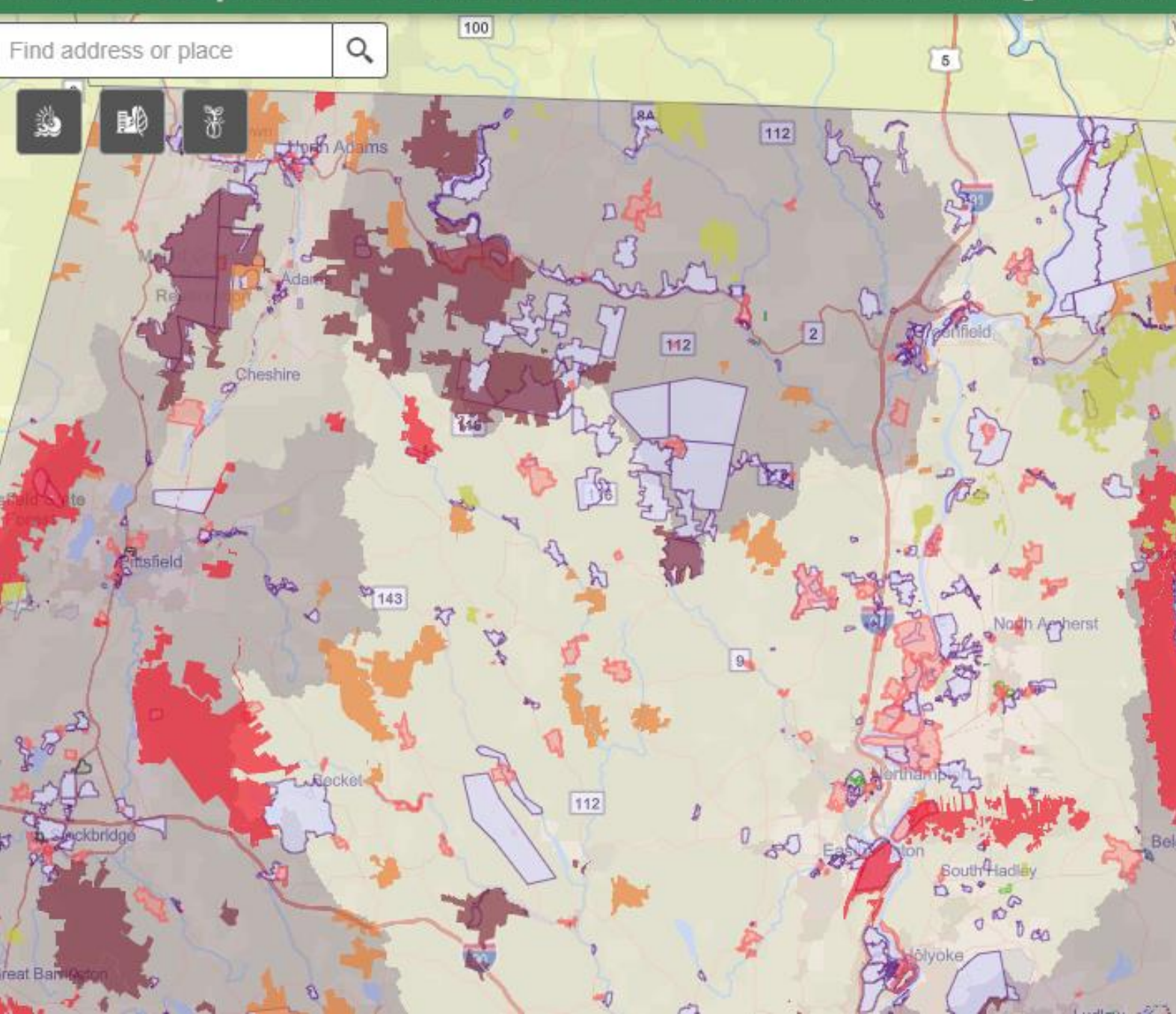
“a change in the state of the climate that can be identified by statistical changes of its properties that persist for an extended period, whether due to natural variability or as a result of human activity.”

Changes in climate affect the way storms and hazards impact DCR's natural, cultural, and recreational resources.



DCR's Climate Resilience Actions





DCR CLIMATE CHANGE VULNERABILITY ASSESSMENT

- Property level vulnerability assessment
- Climate Change exposure, sensitivity, and adaptive capacity
- 528 DCR owned and managed lands
- Informing DCRs plans:
 - Resource Management Plans
 - Watershed Protection Plan
 - and other planning initiatives.

Collaborations and Partnerships



Resilient Mystic Collaborative Event at Draw Seven Park



Stone Living Lab Partnership installs a real time water surface elevation monitoring tide gauge at Gallops Island.



ONGOING PROJECTS AND STUDIES

- DCR Statewide Heating System Decarbonization Initiative
- Belle Isle Marsh Environmental Inventory, Coastal Modeling, and Restoration Assessment
- Resilient Town Line Brook Project Scoping
- DCR Parkways Vulnerability Assessment



OFFICE OF CLIMATE RESILIENCE

THANK YOU

