

A photograph of a park in Lawrence, Massachusetts, featuring several large, leafless trees in the foreground and a playground with green and blue equipment in the background. A black metal fence runs across the middle ground. The sky is overcast and foggy.

DCR PROJECT SHADE

Lawrence Riverfront State Park

Lawrence, Massachusetts

Public Meeting – June 11, 2025

COMMONWEALTH OF MASSACHUSETTS



Governor

Maura T. Healey

Lieutenant Governor

Kimberley Driscoll



Energy and Environmental Secretary

Rebecca L. Tepper

Department of Conservation and Recreation Commissioner

Brian Arrigo

DCR MISSION STATEMENT



“To protect, promote and enhance our common wealth of natural, cultural and recreational resources for the well-being of all.”

MEETING LOGISTICS

- **You will have the opportunity to submit comments over the course of the next two weeks at:**
 - DCR Public Comments – <https://www.mass.gov/forms/dcr-public-comments>
- **Two ways to ask questions during the meeting**
 - Use chat feature
 - Raise your hand: Click “Reaction”, then click “Raise Hand” and you will be given permission to unmute and speak.
- **Please note that this public information meeting will be recorded and the recording will be public record.**

AGENDA

1. Team Introductions
2. Project Overview
3. Next Steps
4. Discussion – Q/A



TEAM INTRODUCTIONS

CLIENT

Department of Conservation & Recreation



DESIGN TEAM

Civil Engineering and Wetland Science – Comprehensive Environmental Inc.



Structural Engineering – Cirrus Structural Engineering



Landscape Architecture – Earthdesign Landscape Architecture



PROJECT SHADE VISION STATEMENT

“To create a network of resilient and shaded gathering places across Commonwealth parks that provide safe, comfortable, and equitable outdoor spaces for all, especially vulnerable communities, during extreme heat events.”

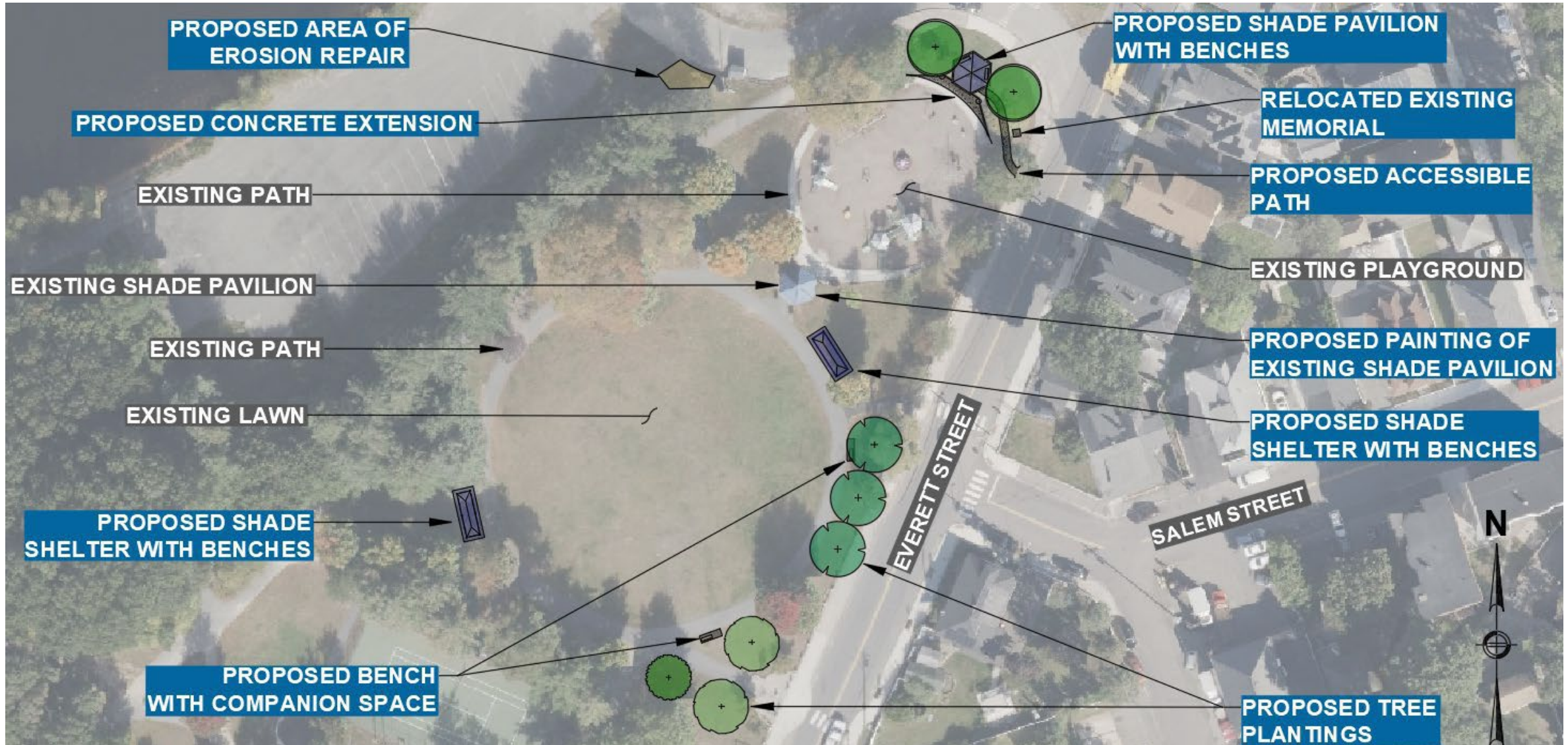


PROJECT OVERVIEW

1. Project Layout
2. Site Furnishings
3. Proposed Tree Plantings



PROPOSED PROJECT LAYOUT



PROPOSED SITE FURNISHINGS



PROPOSED TREE PLANTINGS



Red Sunset Maple



Eastern Hop Hornbeam



Heritage River Birch



Princeton American Elm

NEXT STEPS

- **Summer 2025**

- Finalize design plans and specifications
- Permit the project through filing a Notice of Intent (NOI) with MassDEP and the Lawrence Conservation Commission
- File a Project Notification Form (PNF) with MassHistoric to confirm no adverse impacts to cultural resources
- Obtain State Building Permit filing to the Dept. of Public Safety

- **Fall 2025**

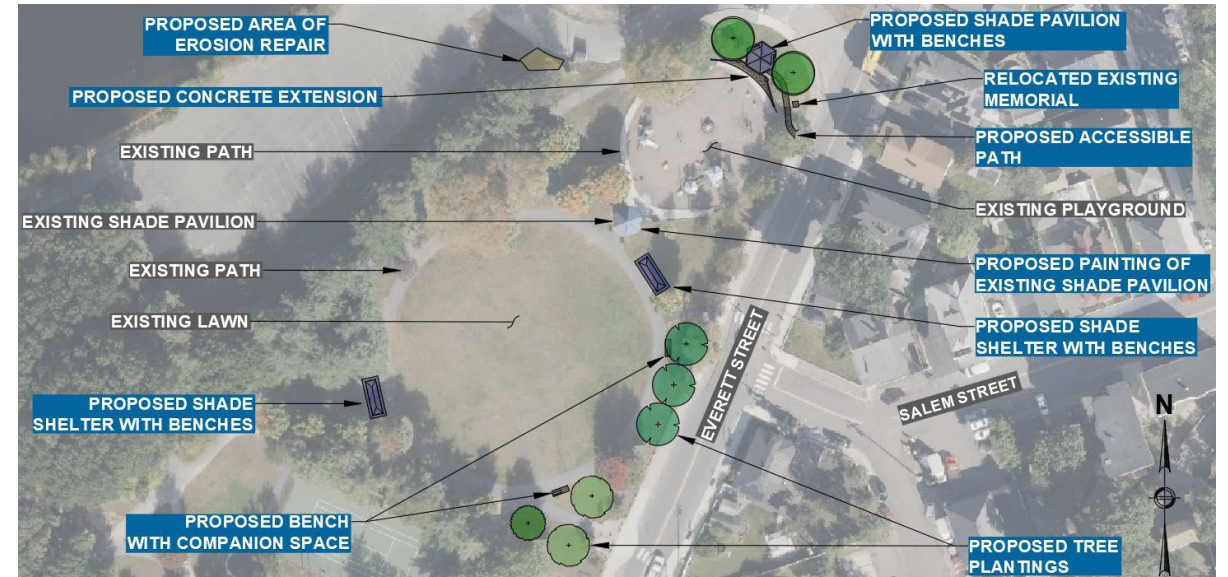
- Prepare project for bidding and construction by a licensed contractor
- Construction start

- **Spring 2026**

- Final plantings and construction completion

DISCUSSION / Q & A

- What do you like about the Project Shade Proposals?
- Do you have any concerns about the Project Shade Proposals?
- Thoughts on where to relocate the “Philip J. Riley Park” memorial?
- What’s your favorite thing to do at Lawrence Riverfront State Park?



ADDITIONAL INFORMATION

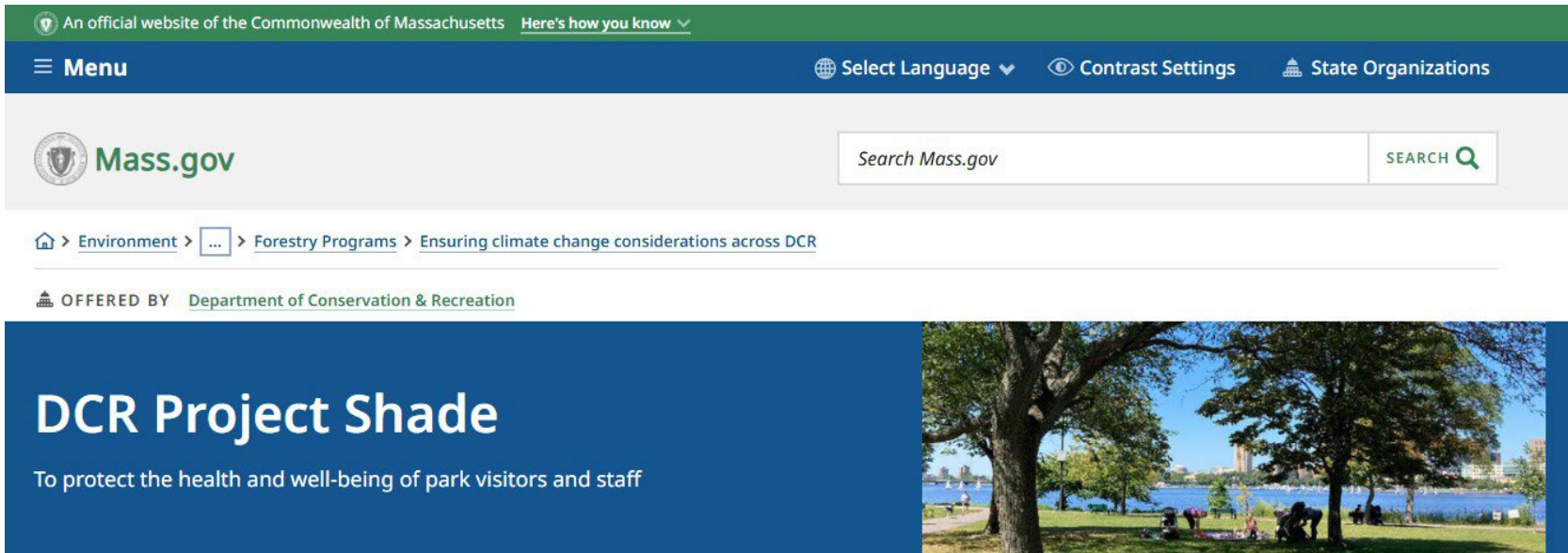
- **Project Shade website:** <https://www.mass.gov/info-details/dcr-project-shade>
- **Recording and tonight's slide deck will be available at:**
 - <https://www.mass.gov/dcr-public-meetings-information/events/past?page=1>
- **If you have comments on this project:**
 - Submit online: <https://www.mass.gov/forms/dcr-public-comments>
 - Deadline: Two Weeks

Please note: the contents of comments submitted to DCR, including your name, town, and zip code, will be posted on DCR's website. Additional contact information provided, notably email address, will be used for outreach on future updates of the subject project of property.

- **If you wish to subscribe to a DCR general information on project-related listserv:**
 - Contact DCR's Office of Community Relations via email at mass.parks@mass.gov

DCR PROJECT SHADE WEBSITE

- <https://www.mass.gov/info-details/dcr-project-shade>



The screenshot shows the top portion of the Mass.gov website. At the top is a green banner with the text "An official website of the Commonwealth of Massachusetts" and a link "Here's how you know". Below this is a dark blue navigation bar containing a "Menu" icon, "Select Language", "Contrast Settings", and "State Organizations". The main header area is light gray and features the "Mass.gov" logo on the left and a search bar with the placeholder "Search Mass.gov" and a "SEARCH" button on the right. Below the header is a breadcrumb trail: "Home > Environment > Forestry Programs > Ensuring climate change considerations across DCR". Underneath the breadcrumb is a line stating "OFFERED BY Department of Conservation & Recreation". The main content area has a dark blue background on the left with the title "DCR Project Shade" and the subtitle "To protect the health and well-being of park visitors and staff". To the right of this text is a photograph of a park scene with large trees, a body of water, and people sitting on a grassy area.

Vision Statement

To create a network of resilient and shaded gathering places across Commonwealth parks that provide safe, comfortable, and equitable outdoor spaces for all, especially vulnerable communities, during extreme heat events.

THANK YOU

dcr
Massachusetts

