

Resource Management Plans: A Proposal for Completing All Plans in Five Years




Stewardship Council Briefing
November 12, 2020


Goals

- Complete all ***remaining RMPs*** in 5 years
- Use “16 page” template for each DCR facility (forest, park, reservation)
- Implement at District level
- Engage DCR bureaus and offices in creating RMP content
- Build capacity of RMP Program by hiring 2 Planning Assistants (LTSS) and establishing consultant contracts

RMP – “16 Page” Template



Resource Management Plan
Borderland State Park



Adopted by the DCR Stewardship Council Monthly Year

Massachusetts Department of Conservation and Recreation
Division of Conservation and Resource Stewardship
Resource Protection Bureau
Office of Cultural Resources



Borderland State Park

North Entry South Entry Historic Site Billy Campbell

PARK OVERVIEW

Date Established: 1974

Location: Amesbury, Massachusetts

Landmark Designation (acres)

Publicland	1,141
Recreation	0
Woodland	0

Park Size (acres)

Public	1,141
Private	1,242
Lake and Pond	131
Wetlands	111
Other	11

Boundary Length (miles): 12.3

Annual Visitation (2018): 111,111

Regulatory Designation (acres)

State of Critical Environmental Concern - Critical River	2
National Register Historic District	1,250
State Historic Site (SHS)	1,111

LONG-TERM AGREEMENTS

- Historic Landmark District Commission - 1972
- Wetlands Protection Act - August 1972

CONCESSIONS

- None

PARTNERS & FRIENDS

- Borderland State Park Advisory Council
- Friends of Borderland State Park
- Borderland Historic Site
- New England Mountain Bike Association
- Stewardship Massachusetts Chapter


FEATURES OF INTEREST

- Amesbury and surrounding area
- Large grassy field with a large tree
- Historic site
- Large grassy field with a large tree

ACTIVITIES

- Walking
- Running
- Swimming
- Boating
- Fishing
- Ice skating
- Winter sports
- Mountain biking
- Swimming
- Boating
- Fishing
- Ice skating
- Winter sports

Contact Info: (108) 218-4000 • 219 Main Street, North Easton, MA 02556
<https://www.mass.gov/doc/borderland-state-park-rmp>



Borderland State Park

North Entry South Entry Historic Site Billy Campbell

Cultural Resources

Threats:

- The site is in the way of the Amesbury region's growing tourism, maintenance, and repair, often exceeding available staffing and funding. Staffing is most limited during the summer when seasonal employees are not available to perform daily inspections.
- The museum's historic site is in the way of the Amesbury region's growing tourism, maintenance, and repair, often exceeding available staffing and funding. Staffing is most limited during the summer when seasonal employees are not available to perform daily inspections.
- The Park's historic site is in the way of the Amesbury region's growing tourism, maintenance, and repair, often exceeding available staffing and funding. Staffing is most limited during the summer when seasonal employees are not available to perform daily inspections.
- The Park's historic site is in the way of the Amesbury region's growing tourism, maintenance, and repair, often exceeding available staffing and funding. Staffing is most limited during the summer when seasonal employees are not available to perform daily inspections.

Opportunities:

- A rehabilitation plan for the Amesbury region's growing tourism, maintenance, and repair, often exceeding available staffing and funding. Staffing is most limited during the summer when seasonal employees are not available to perform daily inspections.
- The Friends of Borderland is actively engaged in the preservation of the Amesbury region's growing tourism, maintenance, and repair, often exceeding available staffing and funding. Staffing is most limited during the summer when seasonal employees are not available to perform daily inspections.

Recreation

Threats:

- Recreation, including hiking, jogging, and other activities, often exceeding available staffing and funding. Staffing is most limited during the summer when seasonal employees are not available to perform daily inspections.
- The Friends of Borderland is actively engaged in the preservation of the Amesbury region's growing tourism, maintenance, and repair, often exceeding available staffing and funding. Staffing is most limited during the summer when seasonal employees are not available to perform daily inspections.

Opportunities:

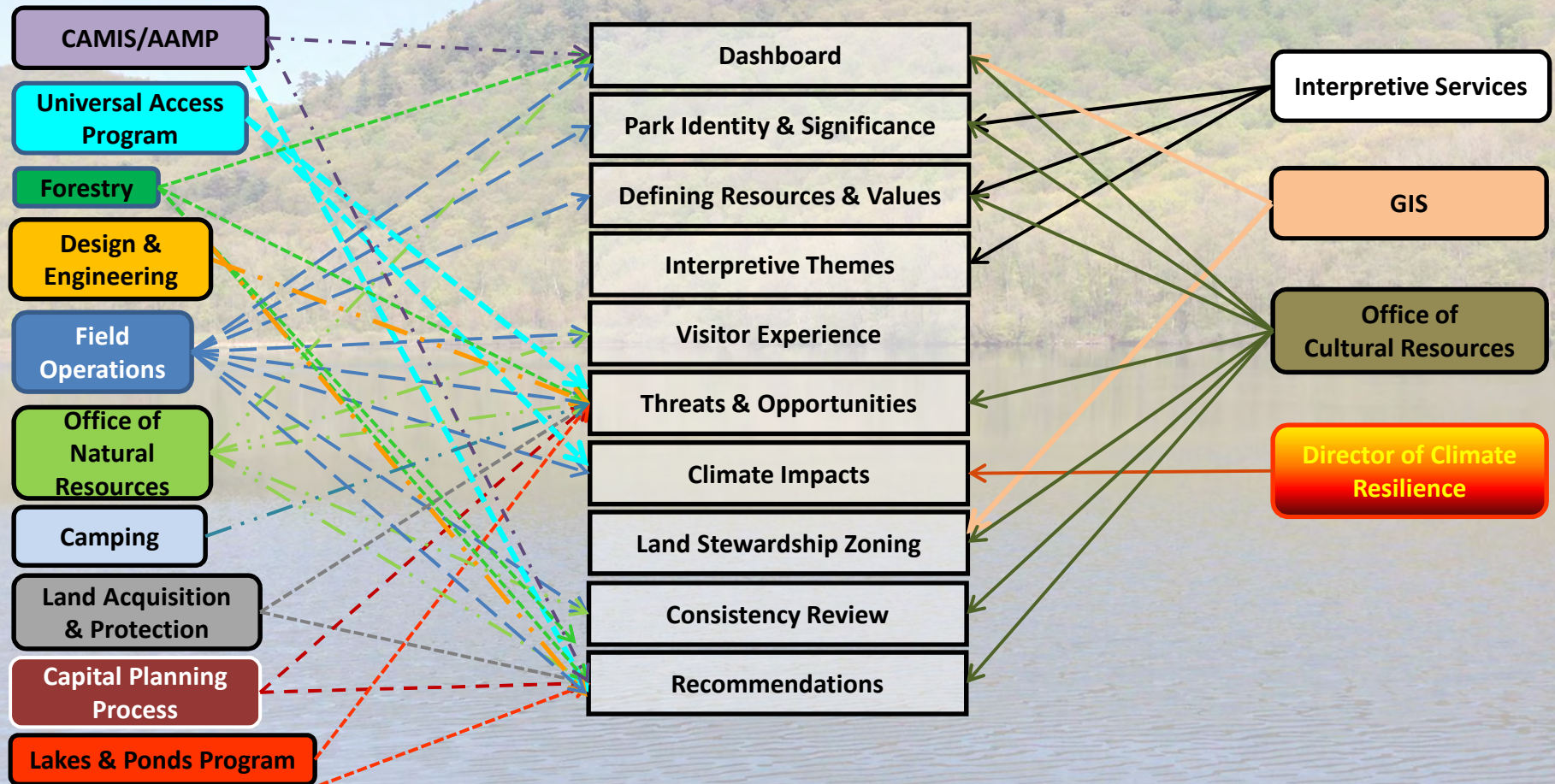
- The 2019 acquisition of Roundstone Hill by the Town of Amesbury creates opportunities for an expanded trail system that includes DCR and managed lands.

Presented to Stewardship Council June 18, 2020

Full Agency Involvement is Critical for Success

Contribute Info

Contribute Info & Content

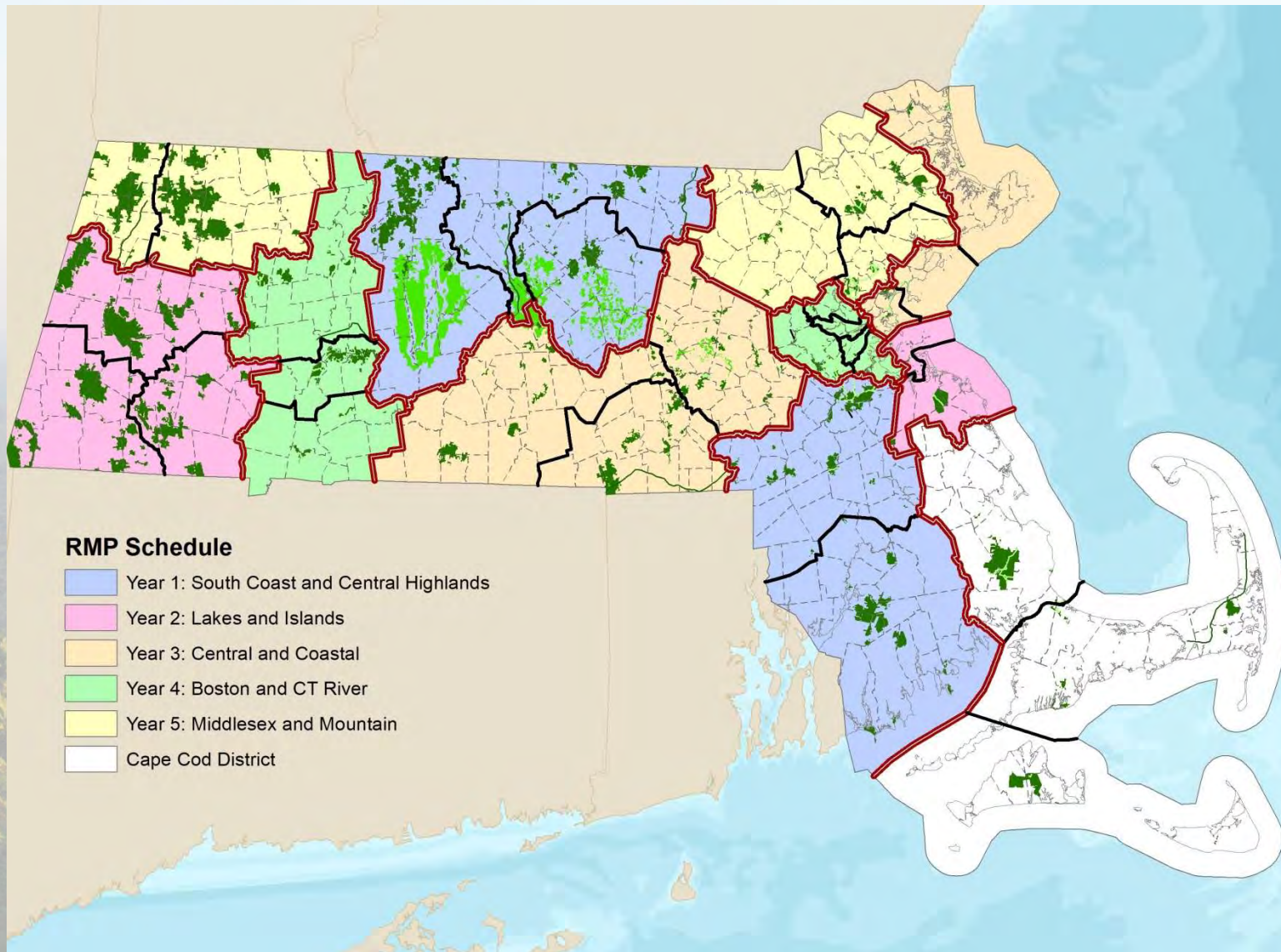


Proposed Approach

- Two Districts; approximately 40 RMPs per year
- Regional distribution
- Balance complicated Districts with simpler ones

Year	District A	District B	# Plans	Regions
1	South Coast	Central Highlands	41	South, Central
2	Lakes	Islands	41	West, South
3	Coastal	Central Valley	41	North, Central
4	Boston	CT River	37	Boston, West
5	Middlesex	Mountain	<u>31</u>	North, West
			191	

Implementation Geography



Implementation Schedule

(Calendar Year)

Region	District	2021	2022	2023	2024	2025	
	Legacy & Special Projects	15					
South	South Coast	10					
Central	Central Highlands	31					
West	Lakes		32				
South	Islands		9				
North	Coastal			17			
Central	Central Valley			24			
Boston	Boston				21		
West	CT River				16		
North	Middlesex					11	
West	Mountain					20	
	Total # Plans/Year	41	41	41	37	31	

Legacy & Special Project RMPs

Finalize Under Old Format

- Myles Standish Complex – 6 properties
- Northfield State Forest

Complete Under New Format

- Blackstone Complex – 7 properties
- Belle Isle Marsh Reservation

Proposed Work Flow

Prior to Q1	Q1	Q2	Q3	Q4
Hire Planning Assistants	Develop property maps	Insert metrics in fact sheets	Land Stewardship Zoning	Edit draft RMPs
Trails data project (one time)	Send survey docs to internal stakeholders	Add VSS Info: - Park Identity - Park Significance - Defining Resources & Values - Interpretive Themes	Combined Property/Zoning maps	Internal stakeholder review and vetting of recommendations
NHESP ISA (one time)	VSS drafts park identity and significance statements	Visitor Experience text	Consistency Review	General internal review
Develop data request surveys (one time)	Internal Stakeholder Meeting	Climate Impact text	Draft Recommendations	Commissioner's briefing and review
Annual Work Plan Meeting	Major map edits	Threats & Opportunities		Public Meeting 2
	Calculate metrics			Stewardship Council
	NHESP data request			Post & archive adopted RMP
	Public Meeting 1			

Building Capacity – Program Needs

DCR Staff

- 2 LTS Planning Assistants (winter & spring; 48 weeks/year total)

Consultant Services

- ISA with Natural Heritage and Endangered Species Program (NHESP) for data and review;
 - Annual expense
- Trails Data Project;
 - One-time expense

Consultant Services - NHESP Review

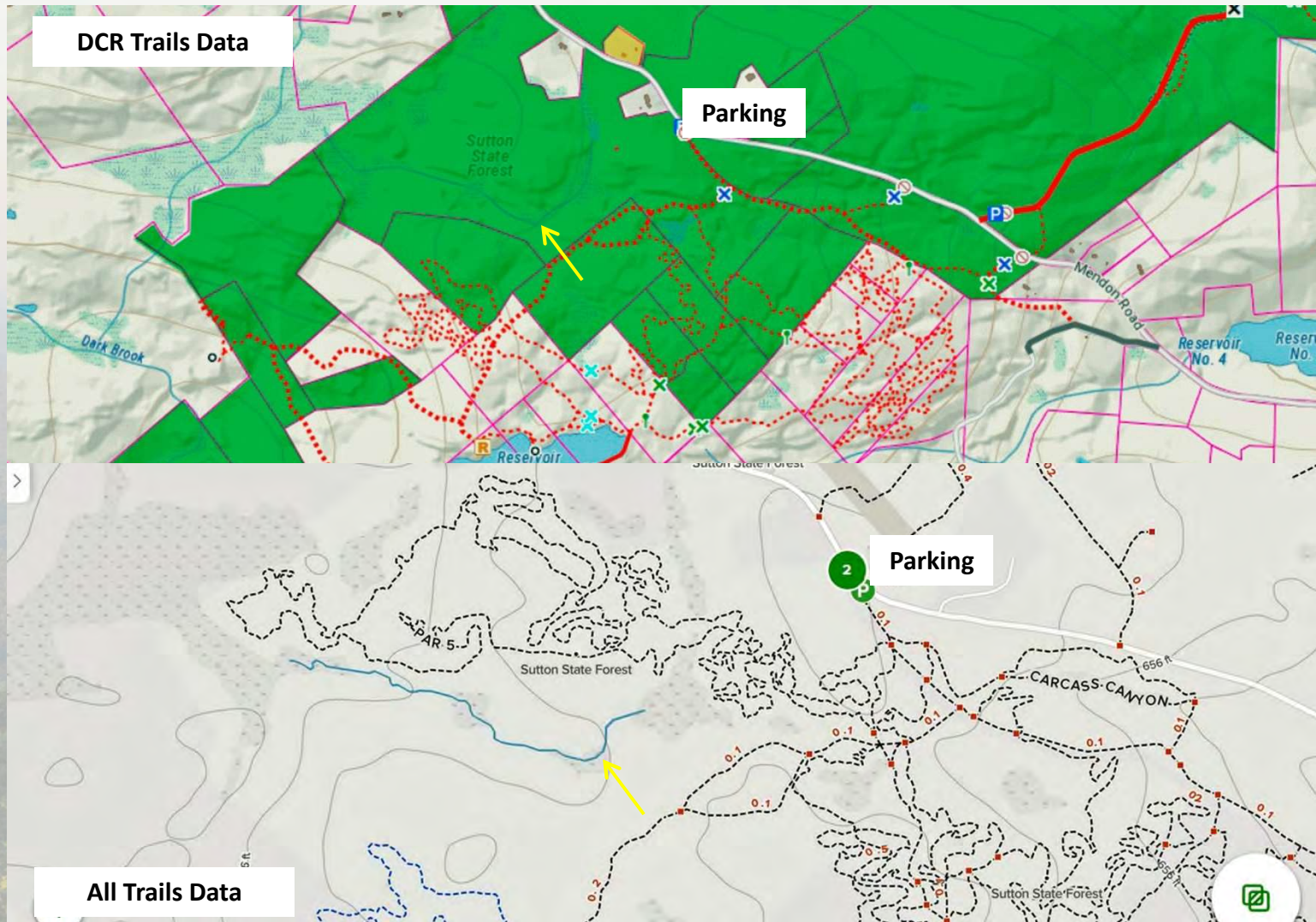
- Sole source of rare species data
- Provide guidance on rare species management
- Previously provided at no-cost when only 5-10 properties per year
- Volume of data requested requires ISA and \$

A person wearing a red shirt and a helmet is riding a mountain bike on a dirt trail through a forest. The trees are tall and thin, and the ground is covered in fallen leaves and branches. The scene is slightly blurred, suggesting motion.

Consultant Services - Trails Data Project

- Compare authorized and unauthorized trails using DCR and other data
- Most, not all, forests and parks mapped 2006–2013
- Existing DCR data outdated; no plan to update
- Recent user-created trails are common and unmapped by DCR
- Crowdsourced trails data may provide needed information
 - Sutton State Forest example

User-Created Trails: Sutton SF



Trails Data Project –Multiple Benefits

- RMPs – determine consistency between recreation and resource protection
- Stewardship – eliminate threats to resources and identify maintenance priorities
- Greenways and Trails Planning – updated data adds frequency of use info

Next Steps

November–December

- Hire 2 RMP LTSs
- Conduct outreach to Operations, etc.
- Solicit proposal on Trails Data Project
- Prepare ISA with NHESP

January–June

- Finalize legacy RMPs
- Prepare Belle Isle Marsh Reservation RMP
- Begin drafting initial RMPs under new template

Late 2021

- First set of RMPs to Stewardship Council