

# LivableStreets Alliance: A People First Approach to Transportation

---

Stacy Thompson, Executive Director, LivableStreets  
February 2020

# LivableStreets Alliance

---

We advocate for innovative and equitable transportation solutions that create safe, affordable and convenient options for everyone in Metro Boston.



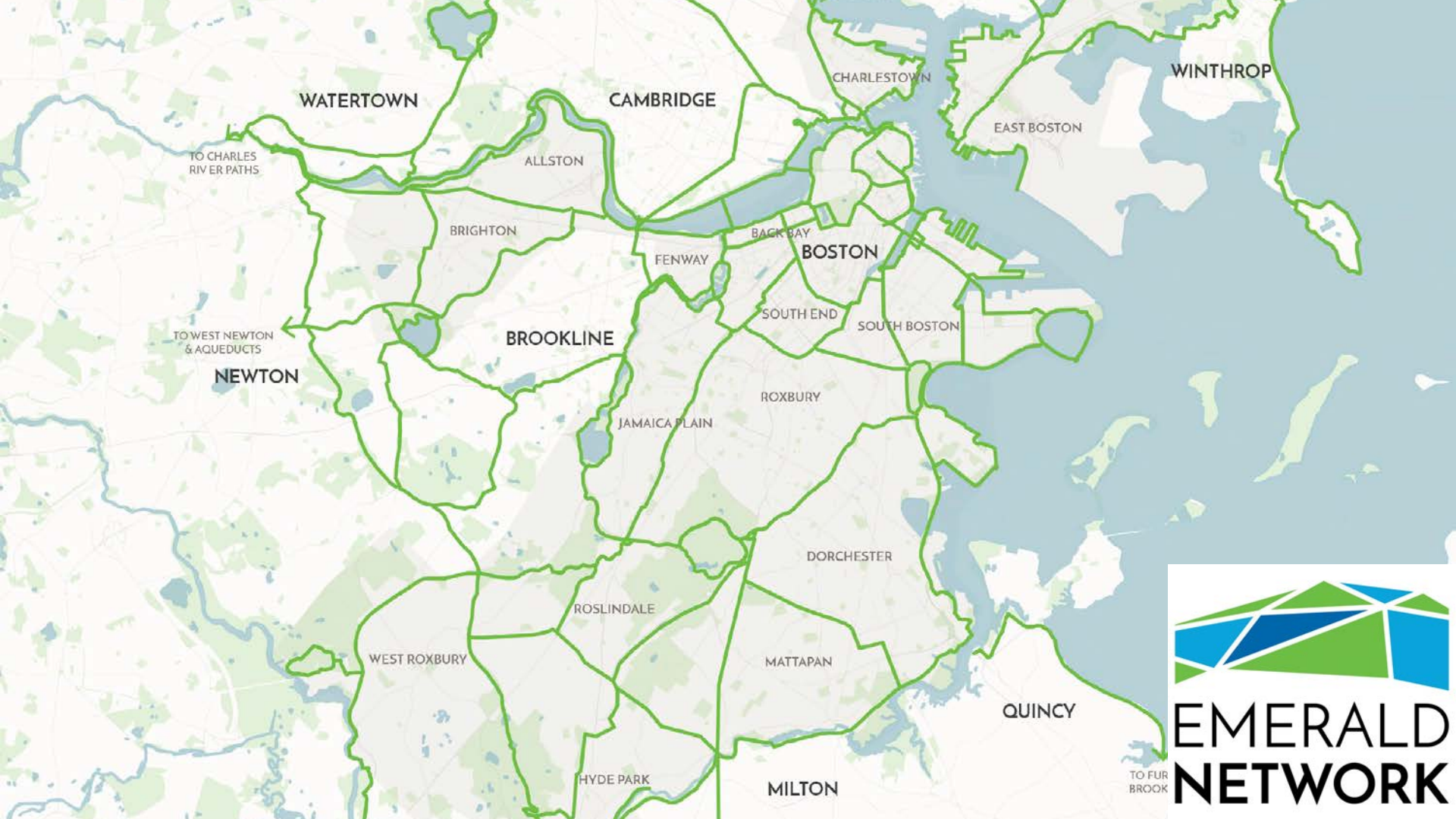
Vision Zero



Emerald Network



Better Buses

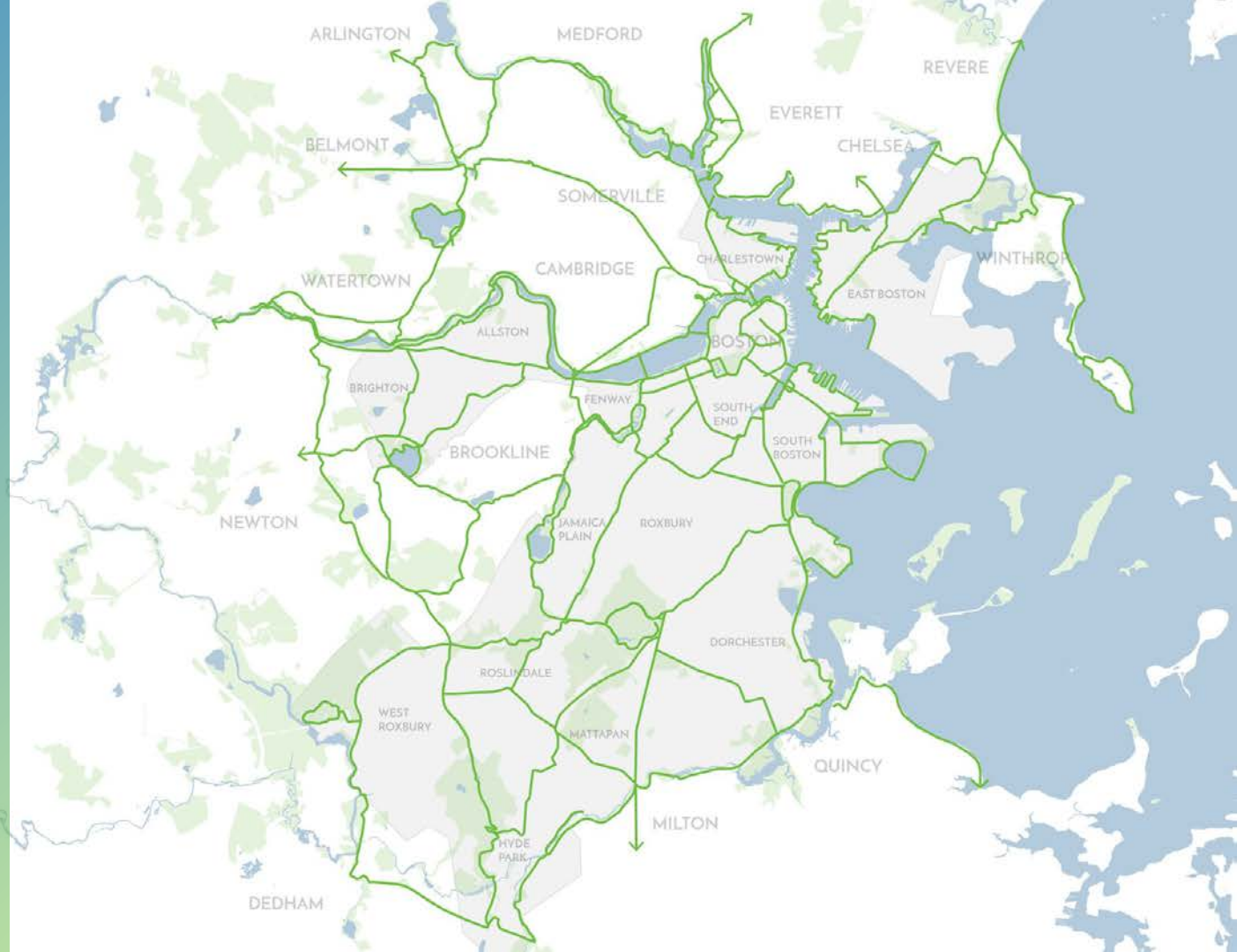


**EMERALD  
NETWORK**

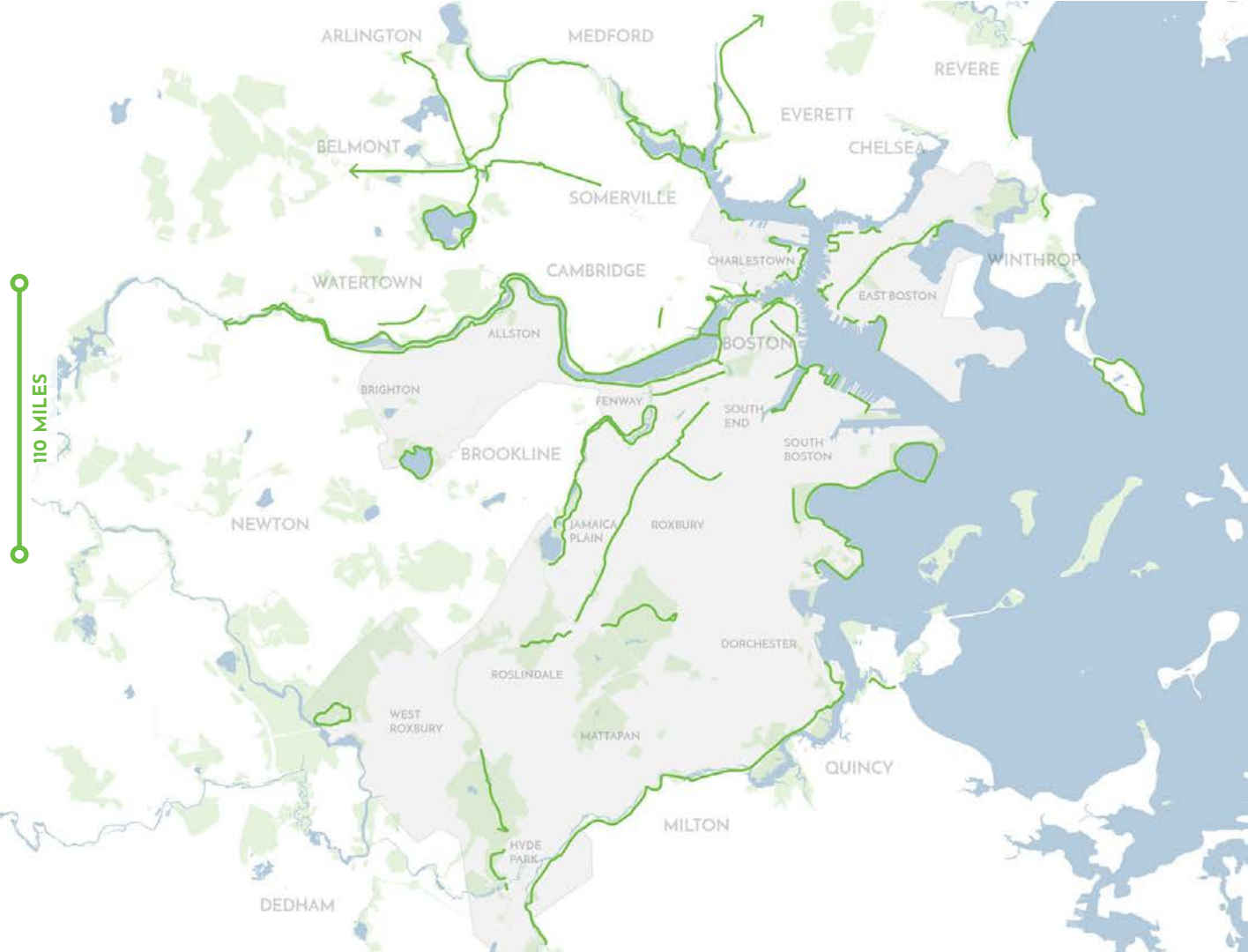


# THE VISION

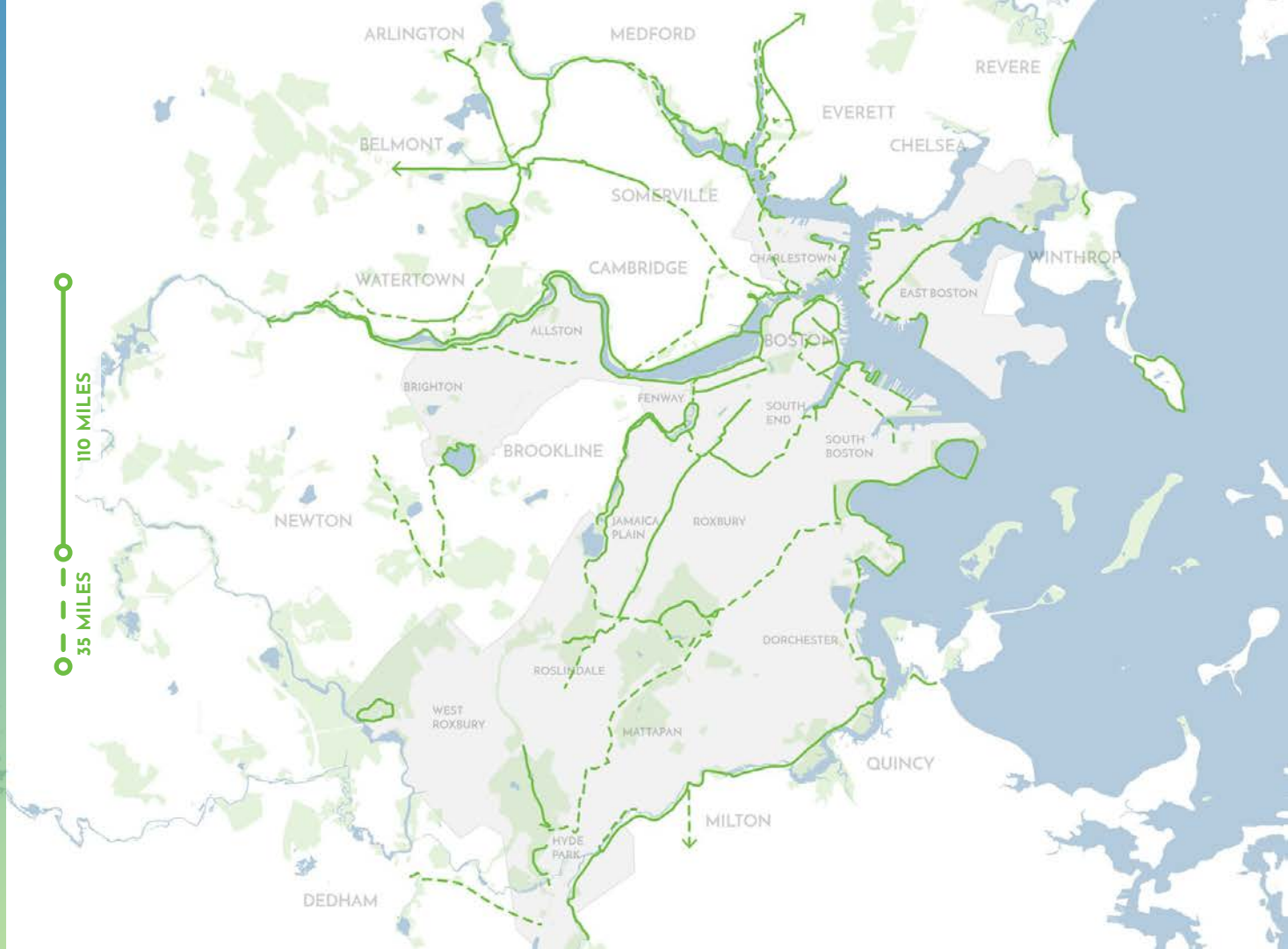
200 miles of  
seamless  
greenways in  
Boston's Inner  
Core



# Existing greenways



Existing  
greenways  
+  
greenways  
in progress





Existing  
greenways  
+  
greenways  
in progress  
+  
proposed  
greenways





# THE POWER OF THE NETWORK



**MOBILITY**



**QUALITY  
OF LIFE**



**ECONOMIC  
DEVELOPMENT**



**HEALTHY  
ENVIRONMEN  
T**



**EQUITY +  
OPPORTUNITY**













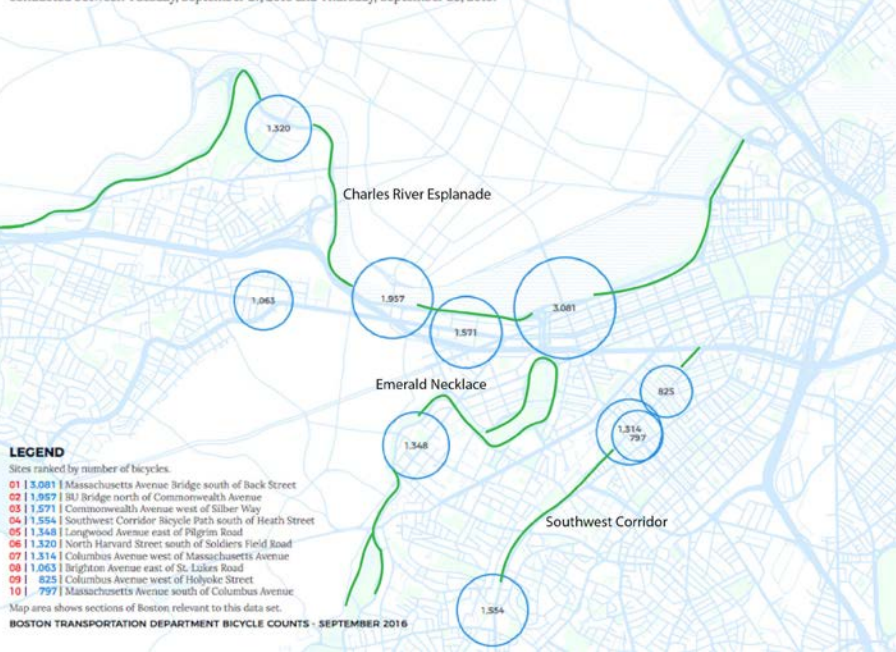


# TRAVEL MODES ARE SHIFTING

## TOP 10 LOCATIONS NUMBER OF BICYCLES - PER DAY

Area of circles and the numbers at the center of the circles represent the average number of bicycles counted at the location for a 24-hour period. Depending on the location, counts were conducted for 24, 48, or 72 hours. All counts were conducted between Tuesday, September 27, 2016 and Thursday, September 29, 2016.

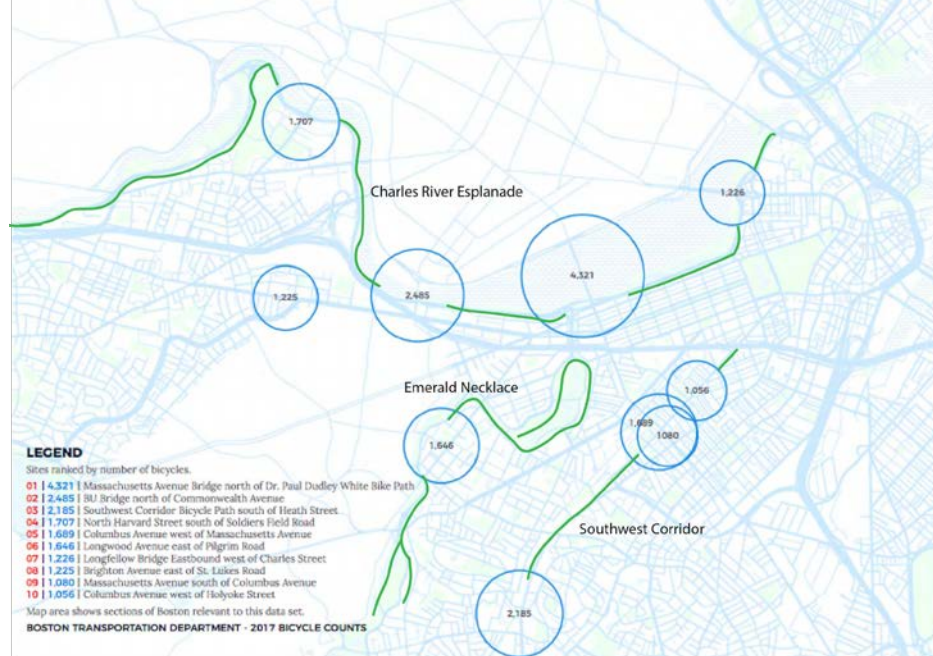
## 2016



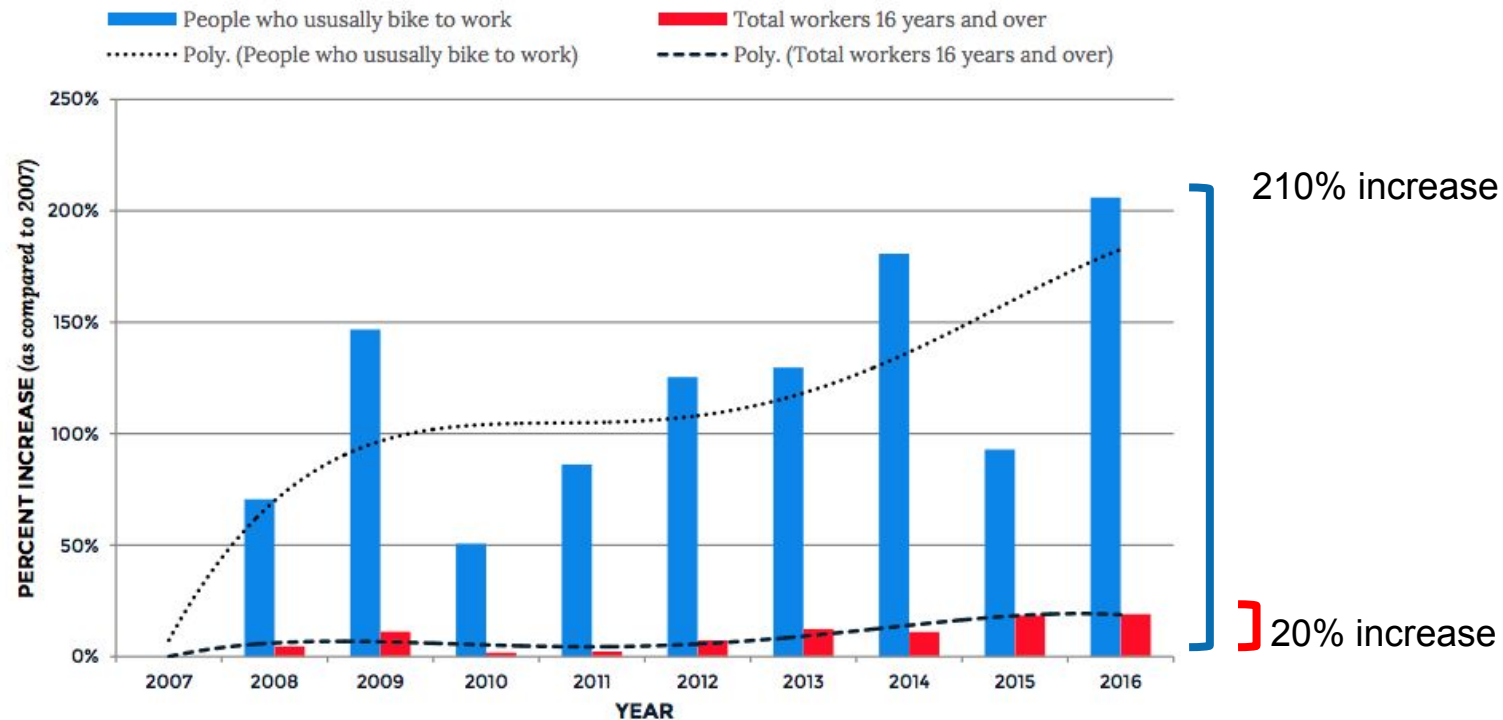
## TOP 10 LOCATIONS NUMBER OF BICYCLES - PER DAY

Numbers and circle sizes represent the average number of bicycles counted at the location for a 24-hour period. Counts were conducted for 48 hours on either Tuesday, September 26, 2017, and Wednesday, September 27, 2017, or Wednesday, October 4, 2017, and Thursday, October 5, 2017.

## 2017



# TRAVEL MODES ARE SHIFTING




# TRAVEL MODES ARE SHIFTING

---

STRATEGIC CORRIDOR	ESTIMATED WORKFORCE	CURRENT %: TRANSIT + WALK + BIKE	EXPECTED %: TRANSIT + WALK + BIKE
Longwood	49,900	65%	65%+
Seaport	37,000	54%	64% (2035)
Kendall	50,000	46%	65% (2030)







**Vision Zero** is a strategy to eliminate all traffic fatalities and severe injuries, while increasing safe, healthy, equitable mobility for all.

First implemented in Sweden in the 1990s, Vision Zero has proved successful across Europe — and now it's gaining momentum in major American cities.

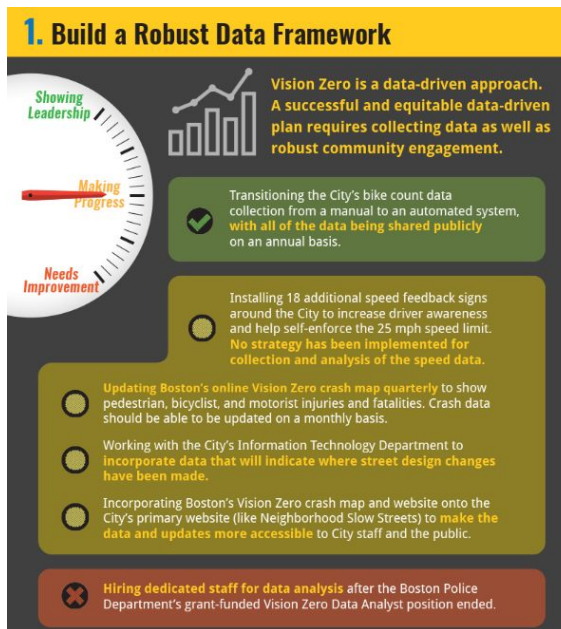
# Massachusetts Vision Zero Coalition



- Annual goal setting
  - State legislation
  - Holding Boston, Cambridge, and Somerville accountable
  - Focusing on priority projects

# Progress Report for City of Boston

## Evaluation



# Guidelines for an Effective Vision Zero Action Plan

## Foundational Elements:

1. Build a robust data framework
2. Set measurable goals with a clear timeline for implementation
3. Be accountable
4. Ensure transparency

### RELEVANT EXAMPLE

Action	0-2 Years	3-5 Years	Partners*
<b>Establish a Vision Zero program within the City</b>			
Establish a permanent, dedicated funding source for Vision Zero implementation and coordination. Continue to create a Vision Zero program with dedicated staff.	\$2M/year; 1.5 FTE/year	\$3M/year; 2 FTE/year	DPW, Mayor's Office, DFO, DEH, CDOT
Coordinate existing funding already going to Vision Zero projects or that could be applied to such projects.	Complete action		DPW, BMO, CDOT
<b>Institutionalize Vision Zero as the City's approach to its transportation system</b>			
Convene regular meetings of safety stakeholders to review traffic safety performance and determine strategies for improvement.	6 meetings/ year	6 meetings/ year	DPW or Mayor's Office, DFO, DEH, others
Convene regular meetings of executive-level departmental representatives to coordinate Vision Zero efforts.	4 meetings/ year	4 meetings/ year	Mayor's Office, Xcel Energy, DPW, DFO, DEH, others
Ensure that Denver Vision Zero staff are represented at CDOT Region 1/City and County of Denver coordination meetings.	Ongoing action	Ongoing action	DPW, CDOT
Make the City and County of Denver a model Vision Zero adopter, including possible fleet modifications, operational changes, and training.	Ongoing action	Ongoing action	DPW

**DENVER'S ACTION PLAN** includes time-bound measurable goals with the responsible city departments identified.



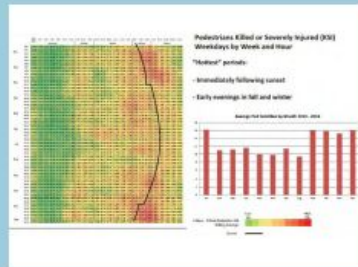
# Guidelines for an Effective Vision Zero Action Plan

## Actionable Strategies:

1. Prioritize roadway design
2. Focus on speed management
3. Utilize impactful education strategies
4. Ensure enforcement is equitable
5. Evaluation

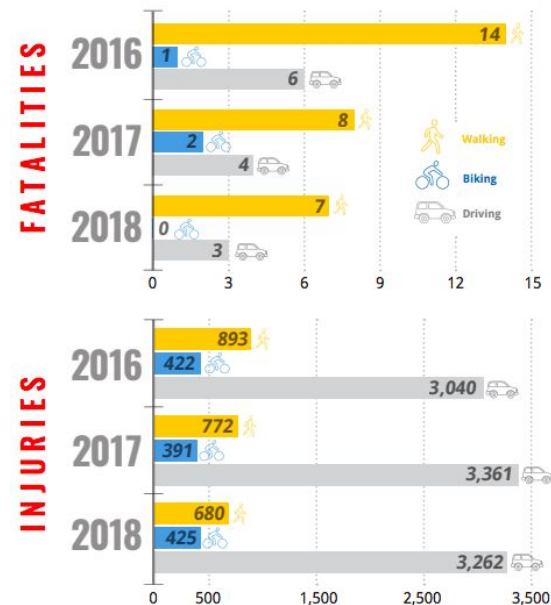
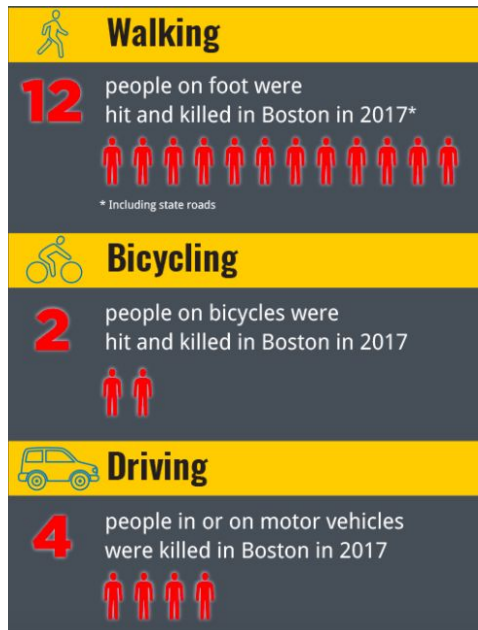
### RELEVANT EXAMPLE

**NEW YORK CITY:** Injury crash data showed a concentration of serious crashes during late afternoon and evening hours, so the Task Force developed and implemented a multi-pronged education and enforcement seasonal campaign aimed at night safety. The city measured a 30% decrease in traffic fatalities for the time period that year compared to the same time frame during the three previous years. (Read [here](#) for more details on NYC's research and campaign.)



# Progress Report for City of Boston

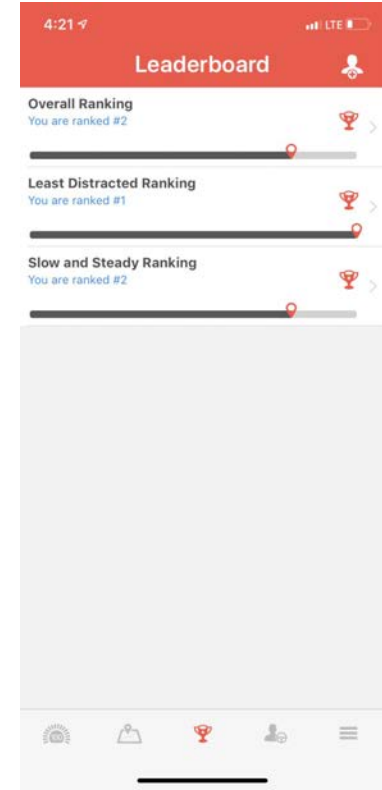
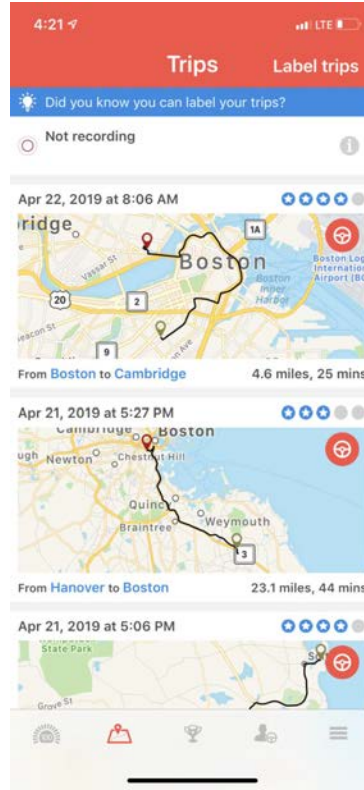
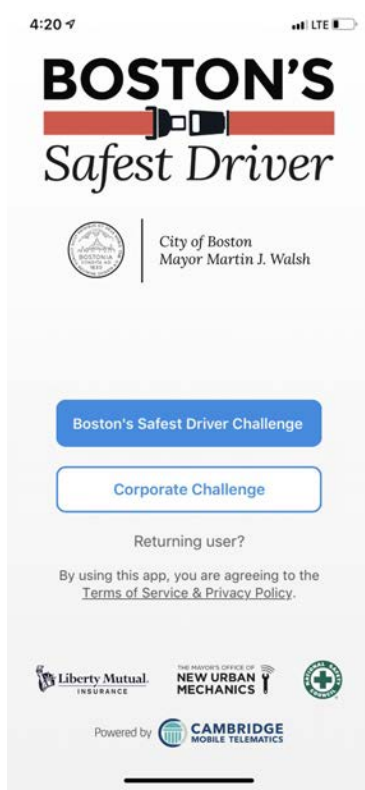
## Fatalities and Injuries



# Boston's Safest Driver

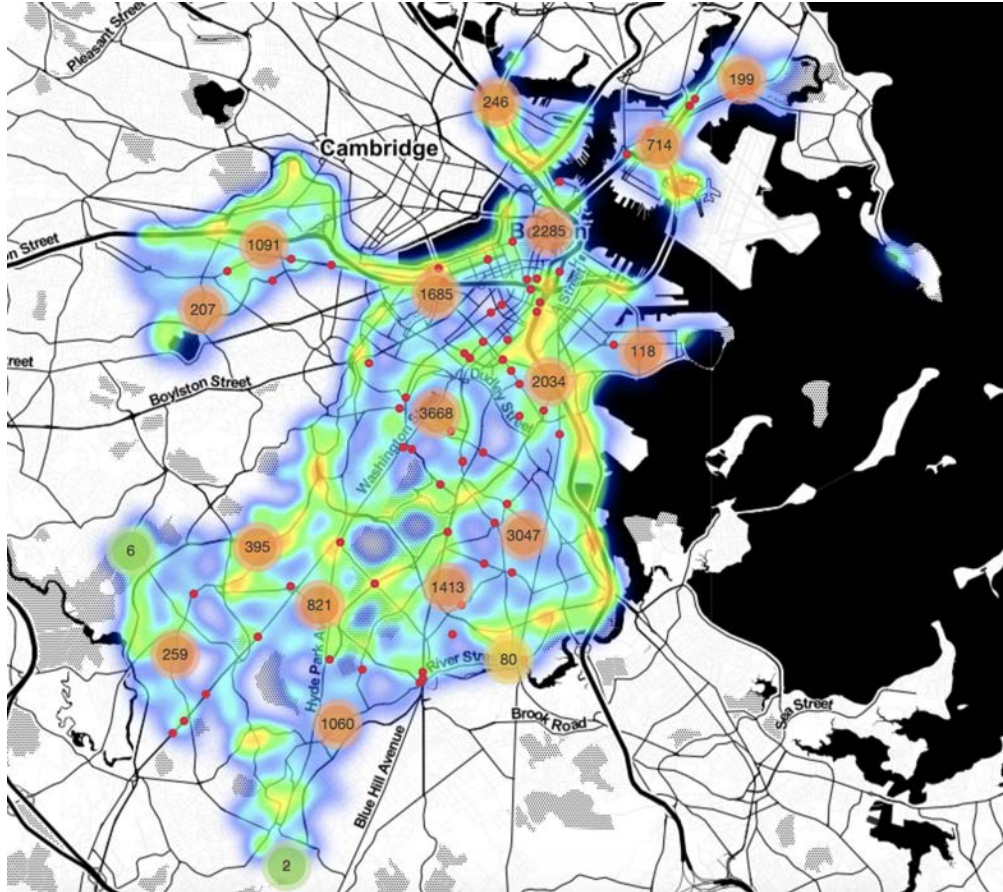


# a friendly reminder...





# speeding - yikes



Top 3 places with highest number of speeding incidents recorded by the app

- Longfellow Bridge
- Soldiers Field
- Riverway



# there's more

Other speeding-related problem areas

- **Arborway**
- **Columbus Ave** between Malcolm X Boulevard and Heath Street
- **Centre St** between Allandale and Weld Street
- **Melnea Cass Boulevard** between Albany St and Shawmut Ave



# more...

---

## Intersections

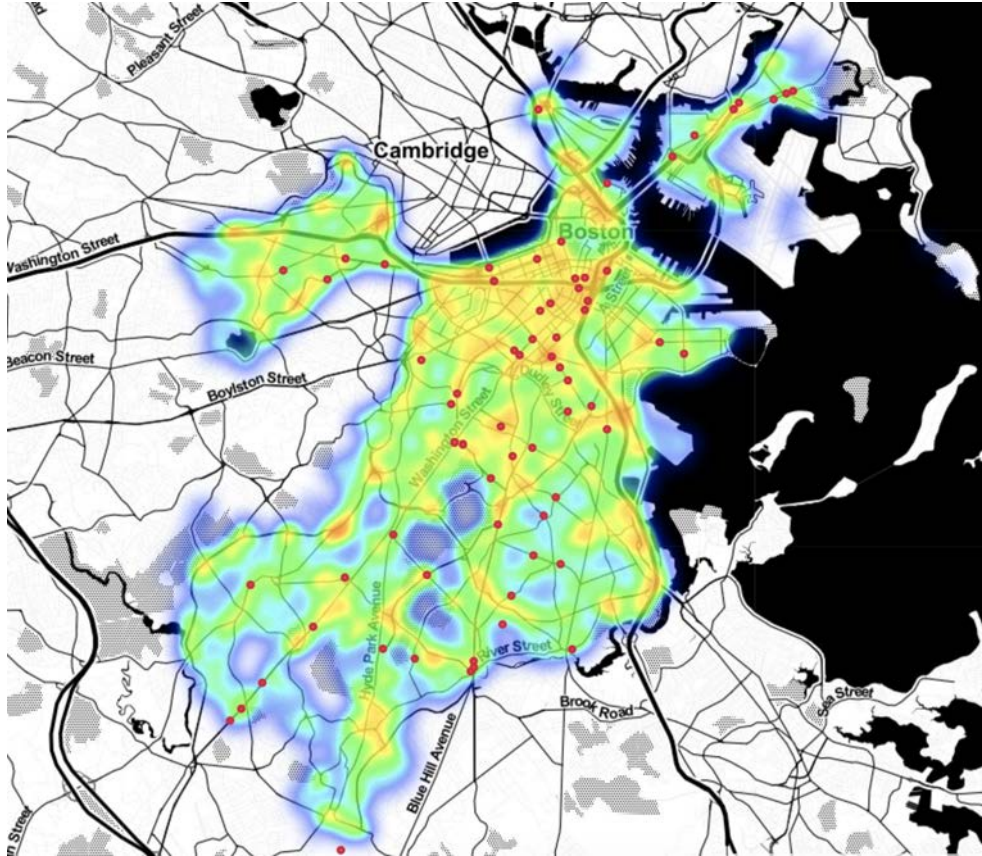
- Intersection of **Brookline** Avenue, **Boylston** Street, and **Park** Drive (the site of a 2019 fatal truck/bike crash)
- Intersection of **Longwood** Avenue and the **Riverway**
- Intersection of **Malcolm X** Boulevard and **Columbus** Avenue
- Intersection of **Massachusetts** Avenue and **Melnea Cass** Boulevard (the site of a fatal 2019 car/pedestrian crash)

## Segments

- **Huntington Avenue** between Massachusetts Avenue and Tremont Street (the site of a 2012 fatal bus/bike crash)



# harsh braking - ack



Top 3 places with highest number of harsh braking incidents recorded by the app

- Cambridge Parkway
- Powell and Freeman Street
- I93 and Mass Ave Connector



City of Boston  
Mayor Martin J. Walsh

# and...

---

## Intersections

- Intersection of **Boylston** Street, **Brookline** Avenue, and **Park** Drive (the site of a 2019 fatal truck/bike crash)
- Intersection of **Beacon** Street and **Park** Drive
- Intersection of **Columbus** Avenue and **Heath** Street (the site of a fatal 2017 crash between two vehicles)

## Segments

- Intersections along the **Riverway**
- Intersections along **Commonwealth** Avenue in Back Bay and by Boston University
- Intersections along the **Arborway**
- **Melnea Cass** Boulevard between **Tremont** Street and **Massachusetts** Ave (area includes a fatal crash from 2017 and two in 2019)



# hard cornering

East Boston Expressway



Storrow Drive



Edwin H Land Boulevard



# hard acceleration

## Park Drive



## Longfellow Bridge



## Airport Way



# LivableStreets



Connecting People + Places