

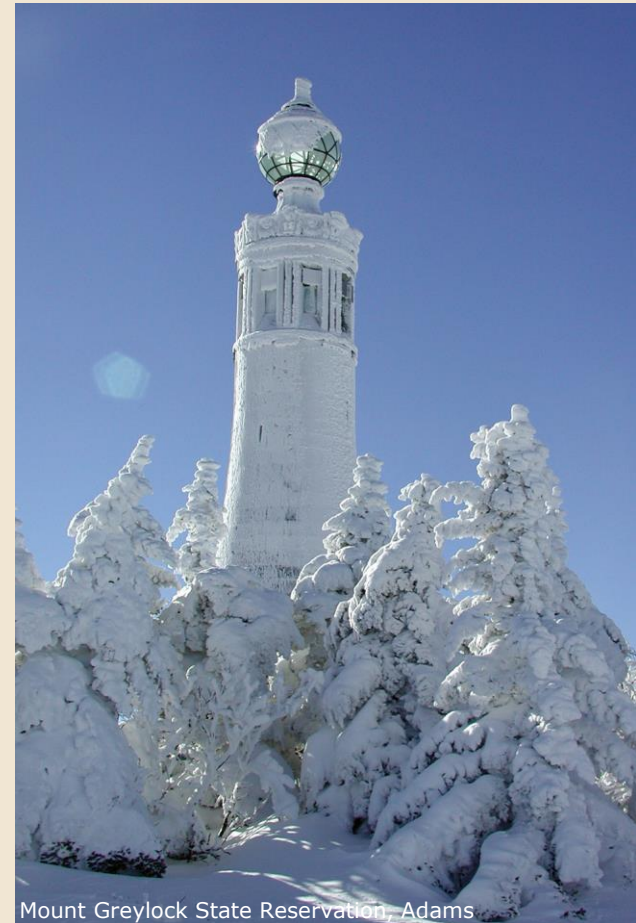
# An Introduction to Resource Management Plans



DCR Stewardship Council Meeting  
October 11, 2019 - West Boylston

## Legal Requirements (*M.G.L. Chapter 21; Section 2F*)

**The Commissioner of Conservation and Recreation shall submit management plans to the Stewardship Council with respect to all reservations, parks, and forests under the management of the department**



Mount Greylock State Reservation, Adams



## Legal Requirements (continued) (*M.G.L. Chapter 21; Section 2F*)

### Said management plans shall:

- Include guidelines for the operation and land stewardship of the aforementioned reservations, parks, and forests;
- Provide for the protection and stewardship of natural and cultural resources; and
- Ensure consistency between recreation, resource protection, and sustainable forest management.



Piping Plover; Bill Byrne photo



Plymouth Rock, Pilgrim Memorial State Park

## Legal Requirements (continued) (*M.G.L. Chapter 21; Section 2F*)

### **The Commissioner of Conservation and Recreation shall:**

- Seek and consider public input in the development of management plans;
- Make draft plans available for a public review and comment period through notice in the Environmental Monitor;
- File a copy of such plans as adopted by the Stewardship Council with the State Secretary and the Joint Committee on Natural Resources and Agriculture of the General Court; and
- Be responsible for implementing said management plans.



Walden Pond State Reservation, Concord

## *Intended Audience for RMPs*

- DCR decision-makers
- DCR property managers
- Other stakeholders:
  - Elected officials
  - Friends groups
  - Partner organizations
  - State agencies
  - Park visitors/Neighbors



Friends of Upton State Forest



# RMP Program Timeline

03

DCR Established,  
Work begins on RMPs

04

Stewardship Council unanimously  
adopts RMP Implementation Plan

08

Statewide RMP  
assessment & prioritization

15 RMP format  
standardized &  
simplified

17

RMP Process review  
& revised prioritization

03

04

05

06

07

08

09

10

11

12

13

14

15

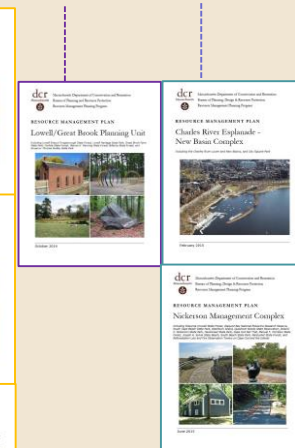
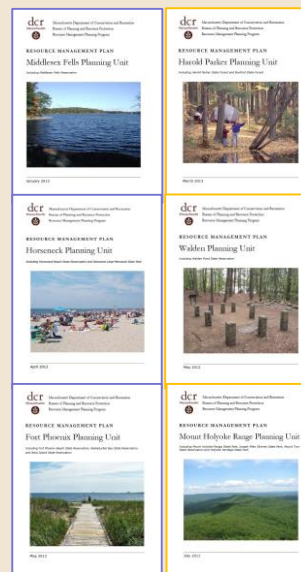
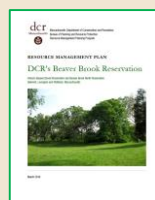
16

17

18

19

20



# Status of RMPs



Complex	Status
Blue Hills	Complete
Esplanade	Complete
Mt. Holyoke	Complete
Nickerson & Manuel Correllus	Complete
Walden	Complete
Blackstone	In Progress
Harbor Islands	In Progress
Myles Standish	In Progress
Pittsfield	In Progress
Salisbury	In Progress
Beartown	-
Bradley Palmer	-
Castle Island	-
Charles River	-
Connecticut River Greenway	-
Erving	-
Fall River Heritage	-
Greylock	-
Hampton Ponds	-
Hopkinton	-
Middlesex Fells	-
Mohawk	-
Mystic River	-
Nahant	-
Nantasket	-
Otter River	-
Quinsigamond	-
Revere Beach	-
Southwest Corridor	-
Stony Brook	-
Tolland	-
Wachusett	-



## ***Sequence of Future RMPs***

- Based on 2017 prioritization
- Stratified by DCR Region
- Following completion of RMPs currently underway:
  - Boston Region – Stony Brook Complex  
(e.g., Chestnut Hill Reservation, Cutler Park Reservation, Charles River Reservation (in part))
  - South Region – Fall River Heritage Complex  
(e.g., Watson Pond SP, Horseneck Beach SR, Massasoit SP, Nasketucket Bay SR)
  - Central Region – Hopkinton Complex  
(e.g., Elm Bank, Cochituate SP, Callahan SP, Medfield Charles River SR, Whitehall SP)
  - North Region – Bradley Palmer Complex  
(e.g., Lawrence HSP, Georgetown-Rowley SF, Greycourt SP, Boxford SF, Willowdale SP)
  - West Region – Tolland Complex  
(e.g., Otis SF, Chester-Blandford SF, Becket SF, Granville SF, Huntington SF)
- Sequence may change at the discretion of the Commissioner



# RMP Format

## Overview of the Complex:

- Major parks, other DCR real assets, and legal interests
- Resources, policies, and practices applicable to all, or nearly all, properties

## Park-specific information:

- Natural Resources
- Cultural Resources
- Recreation Activities
- Infrastructure
- Visitor Services
- Management Resources
- Management Practices
- Recommendations

## Appendices



Douglas State Forest, Oxford



Nickerson State Park, Brewster



Blackstone River and Canal Heritage State Park, Uxbridge



Walden Pond State Reservation, Concord

## Recommendations: Types

- Land Stewardship Zoning
- Significant Feature Overlay
- Recreation Guidance
- Specific actionable recommendations

### Recreation Guidance

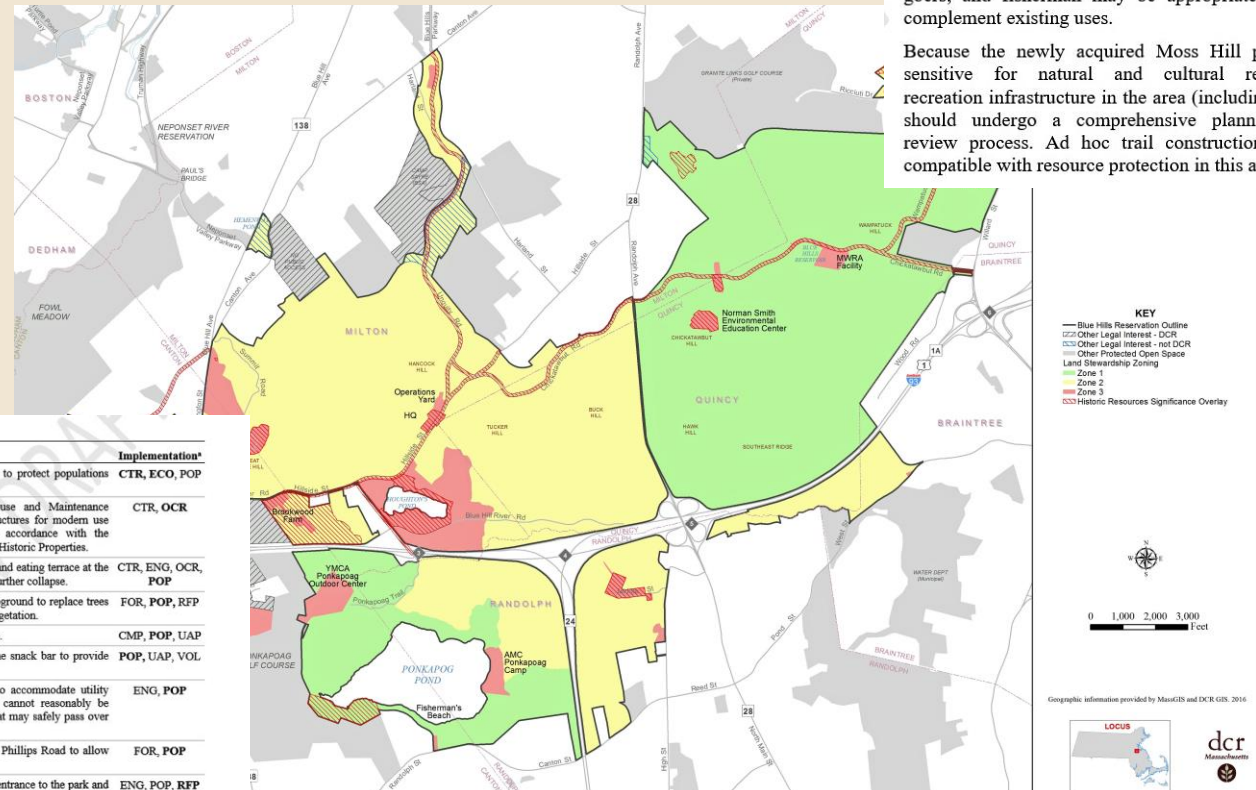
For over 60 years visitors have come to Scusset Beach because of its coastal resources, and the recreational opportunities and experiences that they provide. Since the beginning, emphasis has been placed on beach going and coastal access for passive recreation (e.g., fishing). Camping was added over 40 years ago and is one of the park's key attractions. Future recreation should continue to emphasize these uses and focus on upgrading or replacing existing camping and beach facilities, and the administrative and operations resources needed to run these facilities. Additional recreation facilities (e.g., athletic courts) for the benefit of campers, beach goers, and fisherman may be appropriate if they complement existing uses.

Because the newly acquired Moss Hill parcel is sensitive for natural and cultural resources, recreation infrastructure in the area (including trails) should undergo a comprehensive planning and review process. Ad hoc trail construction is not compatible with resource protection in this area.

Table 7.9.1. Priority recommendations for Scusset Beach State Reservation.

Category	Recommendation	Implementation <sup>a</sup>
Natural Resources	Continue piping plover and tern management activities to protect populations and ensure compliance with state and federal law.	CTR, ECO, POP
Cultural Resources	The circa 1957 Scusset Beach Pavilion (i.e., Bathhouse and Maintenance Building) should be preserved by rehabilitating the structures for modern use while preserving distinctive architectural features in accordance with the Secretary of the Interior's Standards for the Treatment of Historic Properties.	CTR, OCR
Cultural Resources	Fill under walkways, former playground site, courtyard, and eating terrace at the Bathhouse and Garage/Concession with sand to prevent further collapse.	CTR, ENG, OCR, POP
Recreation Resources	Develop and implement a revegetation plan for the campground to replace trees lost to March 2018 nor'easters and to enhance existing vegetation.	FOR, POP, RFP
Recreation Resources	Add accessible tables, grills, and paths to the picnic grove.	CMP, POP, UAP
Infrastructure	Install an accessible surface over the eating terrace at the snack bar to provide universal access to picnic tables.	POP, UAP, VOL
Infrastructure	Identify options to reinforce the boardwalk to beach to accommodate utility vehicle access in emergency situations. If boardwalk cannot reasonably be reinforced, assess purchasing smaller, lighter vehicles that may safely pass over existing boardwalk.	ENG, POP
Infrastructure	Maintain connector road between beach parking lot and Phillips Road to allow use by emergency vehicles.	FOR, POP
Infrastructure	Assess the need for, and feasibility of, reconfiguring the entrance to the park and dump station to increase traffic flow and decrease wait times.	ENG, POP, RFP
Infrastructure	Install security lighting between park headquarters and Fish Pier parking lot.	CTR, ENG, POP

<sup>a</sup> The following codes identify the party or parties responsible for implementing the recommendations: CMP = Camping Program; CTR = Contractor; ECO = Ecology Program; ENG = Engineering; ENV = Environmental and Stormwater; EXT = Office of External Affairs and Partnerships; FOR = Bureau of Forest Fire Control and Forestry; LAQ = Land Acquisition and Protection Program; LGL = Office of the General Counsel; L&P = Lakes and Ponds Program; OCR = Office of Cultural Resources; ODS = Office of Dam Safety; ORP = Office of Regional Planning; OTH = Other; POP = Park Operations, including regional and district staff; PKT = Partner; PSO = Park Support Operations; RFP = Office of Recreational Facilities Planning; RNG = Bureau of Ranger Services; UAP = Universal Access Program; VOL = Volunteer; and VSP = Visitor Services and Programming. The lead party for implementation is identified in bold.





## *Recommendations: Prioritization*

**Recommendations are considered a high priority if they meet one or more of the following criteria:**

- Natural resource stewardship and restoration activities consistent with park identity and intended to improve ecological function and connectivity.
- Cultural resource management activities consistent with park identity and intended to prevent the loss of integrity of significant cultural resources.
- Improvements consistent with park identity that are needed to support intended park activities.
- Actions required for regulatory compliance or compliance with legal agreements.
- Activities that prevent or ameliorate threats to the health and safety of park visitors and employees.



Mount Tom State Reservation, Holyoke



Hemlock Gorge Reservation, Newton  
"Daddarot" photo, via Creative Commons



## Ongoing Challenges/Future Directions



- Continual refinement of content in support of stewardship
- Speeding up preparation of RMPs with available staffing
- Alternative presentation formats (e.g., Story Maps)

