

The Lynnfield Center Water District's
Proposal to Obtain Supplemental Water
Supply from the Massachusetts Water
Resources Authority

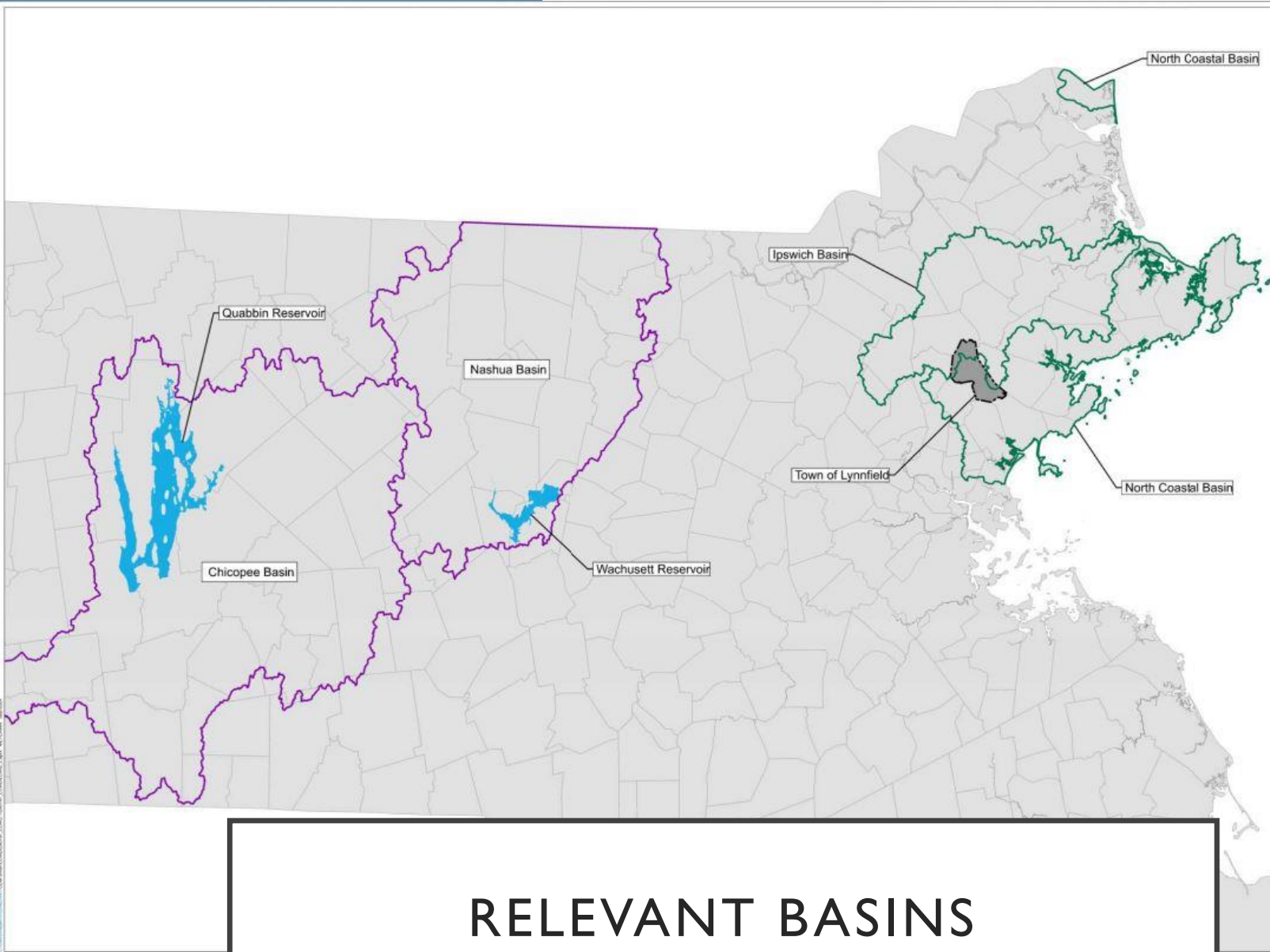
Vote to Accept the Interbasin Transfer Application
as Complete

Massachusetts Water Resources Commission

December 12, 2024

FACTS PERTAINING TO THE APPLICATION

- Project Proponent and Receiving Area: Lynnfield Center Water District (LCWD)
- Donor Area: the MWRA Waterworks System
- LCWD's water supply sources and service area are in the Ipswich River and North Coastal Basins
- MWRA's sources are in the Chicopee River and Nashua River Basins
- Proposing to obtain up to 0.83 million gallons per day to improve resiliency and redundancy
- LCWD has 2 sources in the stressed Ipswich River Basin, and is also experiencing water quality issues (PFAS, iron, manganese, nitrate)



TOWN OF LYNNFIELD
Massachusetts



LYNNFIELD CENTER WATER DISTRICT

MWRA Water Sources
July 2024

- Town Boundary
- MWRA Reservoir
- LCWD Water Supply Basins
- MWRA Water Supply Basins

Figure 3-3
MWRA Water Sources



0 25,000 50,000
Feet

Sources: LCWD, CDM Smith, and MassDOT
Coordinate System: NAD83 Mass
Data Projection: NAD83 EPS: 2001 Feet



RELEVANT BASINS

TOWN OF LYNNFIELD
Massachusetts



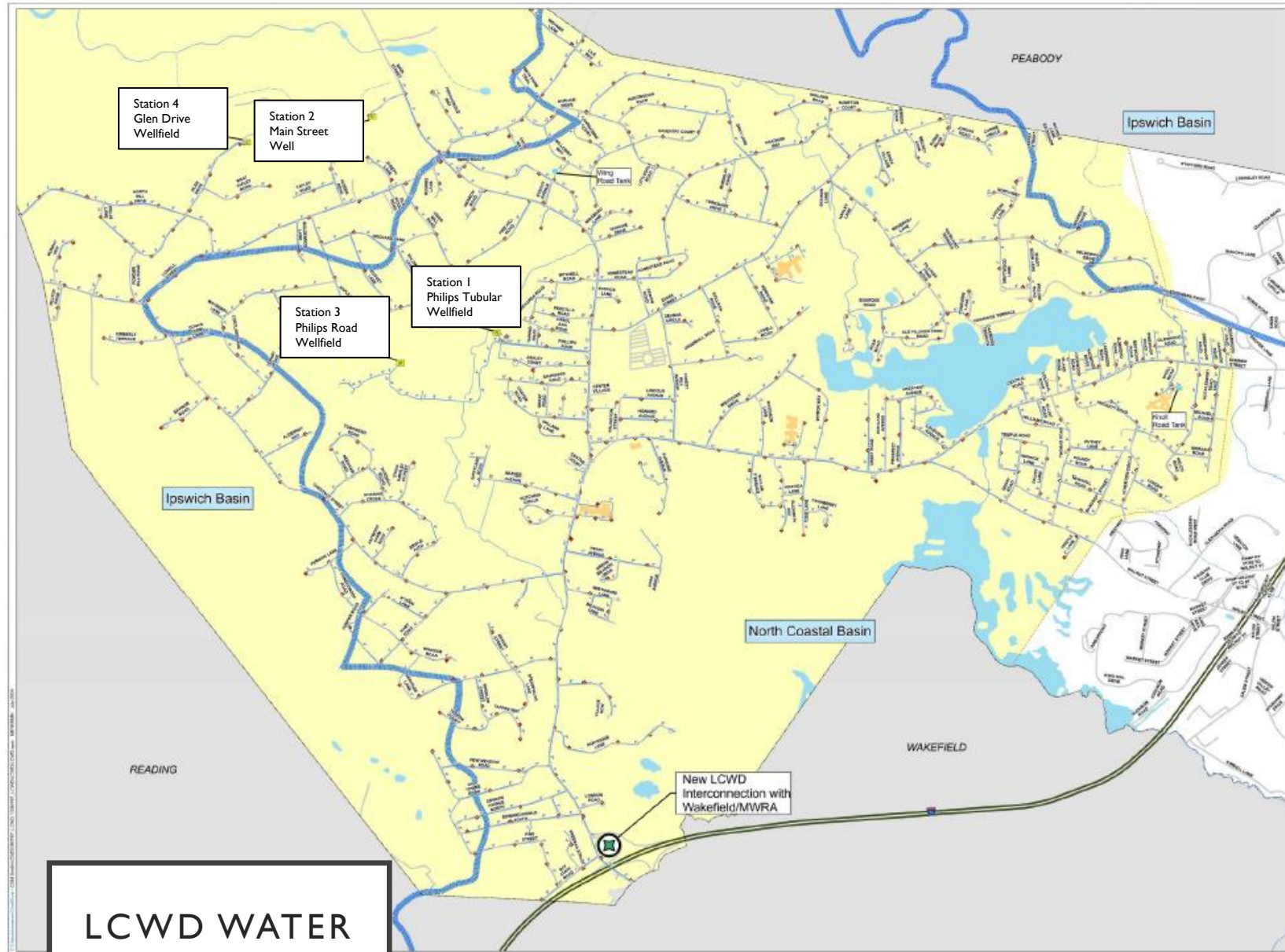
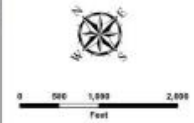
LYNNFIELD CENTER WATER DISTRICT

Water System
July 2024

- Water Network**
- SysValve
 - HydValve
 - Hydrant
 - Water Tank
 - Water Pipe
 - Water District Boundary
 - Pump Station

- Basemap**
- Interstate
 - Town Boundary
 - Major Basins
 - Local Road
 - Town-owned Building
 - Lynnfield Water District
 - New LCWD Interconnection

Figure 3-1
LCWD Water System with
Source Basin Boundaries



LCWD WATER SYSTEM

BRIEF TIMELINE

- Added the Glen Drive wellfield in 1997
- Added new bedrock wells to the Philips Road wellfield in 2013
- Studies completed in 2017, 2018, and 2021 to evaluate LCWD's supplies and identify additional sources of water
- Expanded ENF was published in MEPA's Environmental Monitor on August 9, 2023
- Single EIR published in the Environmental Monitor on October 23, 2024

ITA APPLICATION

- Comments on the Single EIR were due to MEPA on November 22, 2024
- WRC staff review of the SEIR indicated that no additional information was needed
- MEPA Certificate issued on November 29, 2024 – the project adequately and properly complies with MEPA

NEXT STEPS

- Request WRC vote to accept Application as complete today
- Hold two public hearings by February 10, 2025
 - January 14th, 2025, 11:00 am; January 15th, 2025, 1:00 pm
- Aim to present draft staff recommendation at the February 2025 WRC meeting
- Hold third public hearing on draft staff recommendation
 - February 2025, exact date and time to be determined
- Aim to vote on the staff recommendation at the March 2025 WRC meeting