



MASSACHUSETTS  
**Department of  
Early Education and Care**



# December EEC Board Meeting

December 10, 2025

# Agenda

## **Routine Business**

- Approval of minutes from the November 12, 2025 Meeting – VOTE

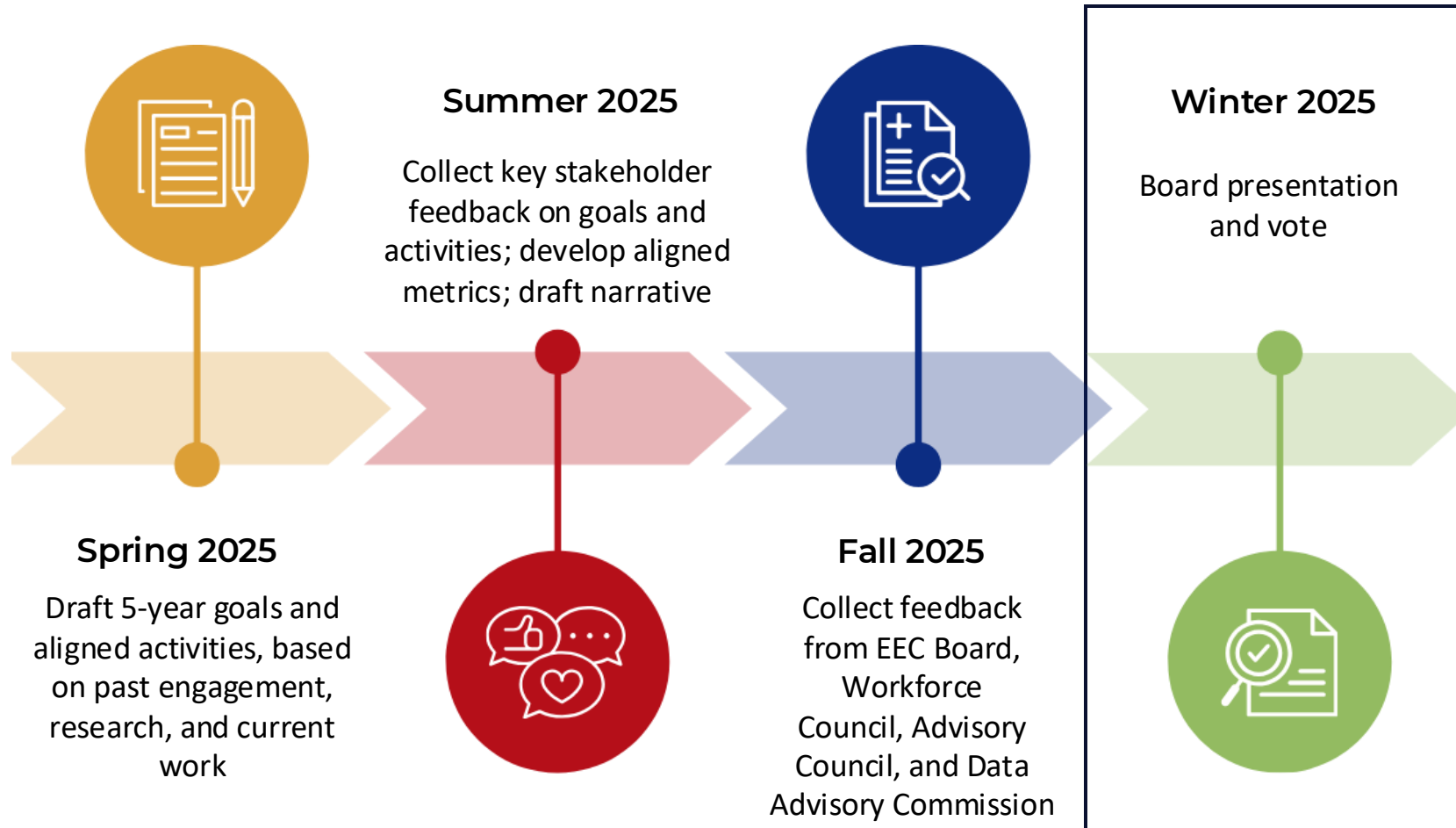
## **Items for Discussion and Action**

- 2026-30 Strategic Action Plan – VOTE
- Family Support Programs, Partners and Initiatives
  - Family and Community Supports: Where Learning and Connection Begin
  - Unifying the CFCE Brand
  - Partner and Provider Voices
  - Family Advisory Council



# 2026-30 Strategic Action Plan

# Strategic Action Plan Timeline



# 2026-2030 Strategic Action Plan

PROPOSAL TO APPROVE – VOTE

Pursuant to G.L. c. 15D, § 4, EEC seeks approval of the draft Strategic Action Plan and for the Commissioner to provide the master plan to the Secretary of Education for his review and approval.

**MOVED:** that the Board of Early Education and Care, in accordance with G.L. c. 15D, § 4, hereby approves the draft master plan and authorizes the Commissioner of Early Education and Care to provide the master plan to the Secretary of Education for his review and approval.

# Next Steps

## **January 1, 2026: Effective Date**

- The Strategic Action Plan will be EEC's blueprint for moving key initiatives and priorities forward over the next five years
- EEC will continually assess the strategies and projects included in the Strategic Action Plan to ensure ongoing relevance and progress towards the Strategic Objectives; and respond to emerging opportunities, needs and requirements
- EEC will revisit the Strategic Action Plan with the Board, at least annually, at the Strategic Planning Retreat



# Family Support Programs, Partners and Initiatives



# Family and Community Supports: Where Learning and Connection Begin



# Family and Community Supports

Family and Community Supports are often the very first connection for our youngest children and their caregivers creating safe, trusted spaces where parents and children can learn, grow, and thrive together from early development and beyond. These supports are rooted in the community, offered at no cost, and open to all families; reinforcing belonging, trust, and access to the continuum of services families need throughout every age and stage.

## Family and Community Supports provide:

Warm, community-based spaces where families build relationships, find support, and feel connected

Opportunities for parents and children to learn, play, and grow together through playgroups, activities, and early development experiences

Concrete supports and navigation help, including parenting guidance, referrals, and connections to community resources

No-cost, no-eligibility services, reducing barriers and strengthening trust between families and community programs

A pathway into the broader early education system, linking families to child care, early learning opportunities, and long-term supports

A continuum of services that follows families across ages and stages — from infancy through early childhood and beyond

# CFCE Overview

## 80 CFCE Grantees



- Individual awards between \$37,415 and \$936,997
- Total investment to grantees \$11,539,190
- All families with children from birth to age six

## Additional Program Funding



- \$1,750,00 to Reach Out and Read (Earmark)
- \$4,249,983 to Parent Child+

## Program History

- The Community Partnerships for Children (CPC) were funded by the state starting in the 1990s as a locally designed initiative to build a system of early childhood services and programs for 3- and 4-year-old children.
- In FY2010, the CFCE Grant consolidated elements of the CPC Grant with the Mass Family Network and ParentChild+ to ensure all families with young children, especially those with the greatest educational need and experiencing multiple risk factors, had access to the resources they need to support optimal development of their children.
- The CFCE Line item states: services may include, but are not limited to, individual or community-wide early literacy activities, family education and engagement initiatives, coordination of services among community-based programs, and collaborative activities between public schools or community-based early education and care providers and families.

# Core Elements

CFCE programs serve as local hubs for early learning, supporting families and providers while empowering parents as their child's first teacher. This strong community foundation anchors the core elements that guide how CFCE strengthens early learning across the state.

## Playgroups



- 263,577 **Touchpoints**
- 24,829 unique playgroups

## Referrals



- 72,964 referrals
- 19,764 referrals to EEC-licensed providers

## Developmental Screenings



- 5,918 developmental screenings

## Parent Education



- 20,818 **Touchpoints**
- 2,976 unique opportunities

## Local Advisory Councils



- Promote collaborations
- Reduce service duplication

# What Do We Know About CFCE Services?

Data for the CFCE Network is captured through a set of priority indicators that report on core areas of family engagement, early learning activities, referrals, and developmental support. Data is focused on:



Programming for children



Referrals to services (like early intervention, special education, licensed child care and out-of-school time programs, partner agencies and more)



Developmental screenings



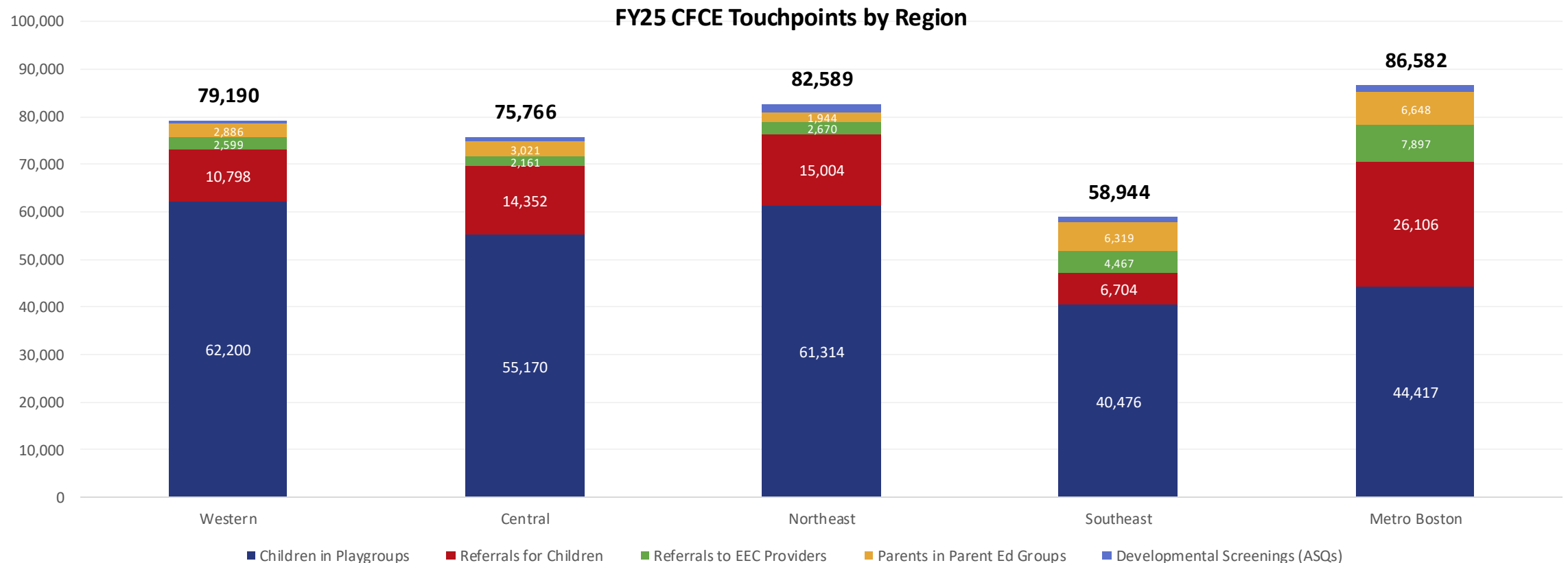
Parent education

Due to the nature of playgroups and parent education and site-to-site limitations, participation is collected as **touchpoints** to honor family comfort and avoid collecting personal identifiers in community-based settings. **Touchpoints** reflect the number of times individuals participate not the number of unique participants.

# How Are CFCEs Supporting Families?

“In FY25, CFCE programs engaged families over **380,000 times**, supported children through nearly **73,000 referrals**, and delivered nearly *\*6,000 developmental screenings statewide.*”

**Touchpoints** reflect the number of times individuals participate not the number of unique participants.



# Supportive Partnerships

## ParentChild+

- Early childhood home-visiting model partnering with families
- Ensures equitable opportunities from the start
- Focus is on school readiness



## Children's Trust

- History of funding and supporting six Family Centers, sunsets EOY
- Shifting focus to cross-agency family support program implementation and training



## Family Resource Center Collaboration

- EEC collaborates with DCF Family Resource Centers
- Strengthens family supports and local partnerships
- Reduces duplication of services



# Key Collaborations

## Boston Children's Museum

- Materials and trainings for Playgroups and home activities that support caregivers in play as learning
- Evidence-based literacy, STEM, math, kindergarten transition, and social emotional learning



## Reach Out & Read

- Pediatricians provide young children with free books
- Supports families in building strong reading habits from birth



## Early Education & Child Care

- Connection to CCRRs to help navigate options
- Referrals to licensed and funded early education and care programs
- Connections to HeadStart and Early Head Start
- Public schools



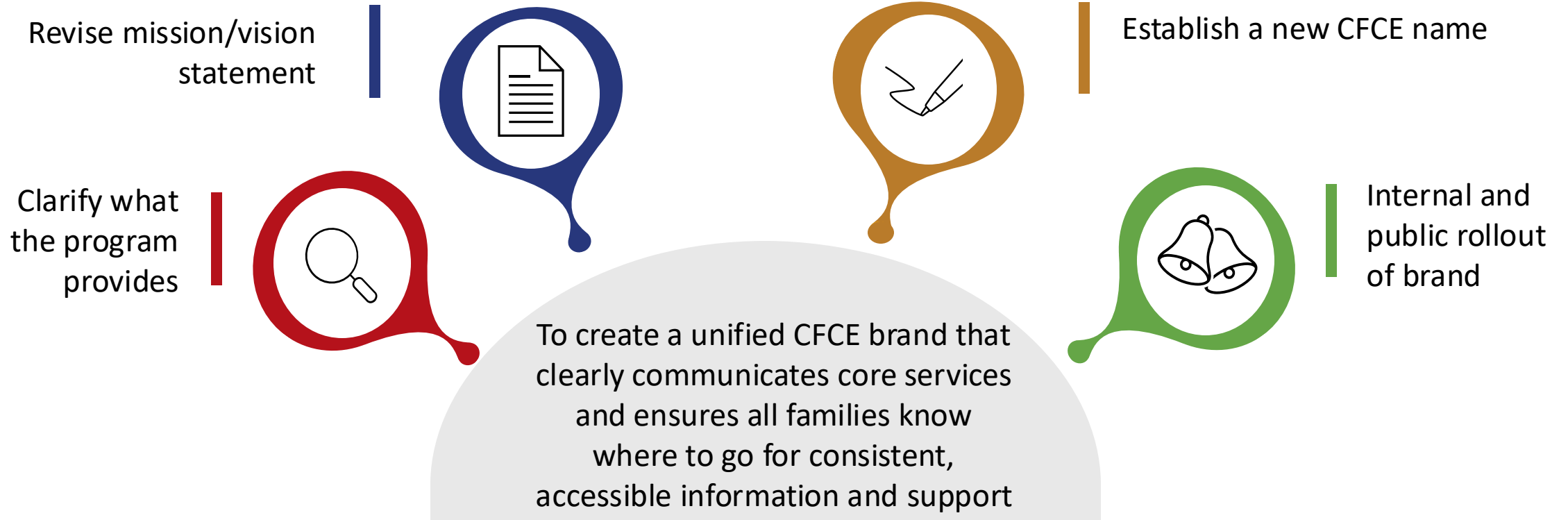


# Unifying the CFCE Brand



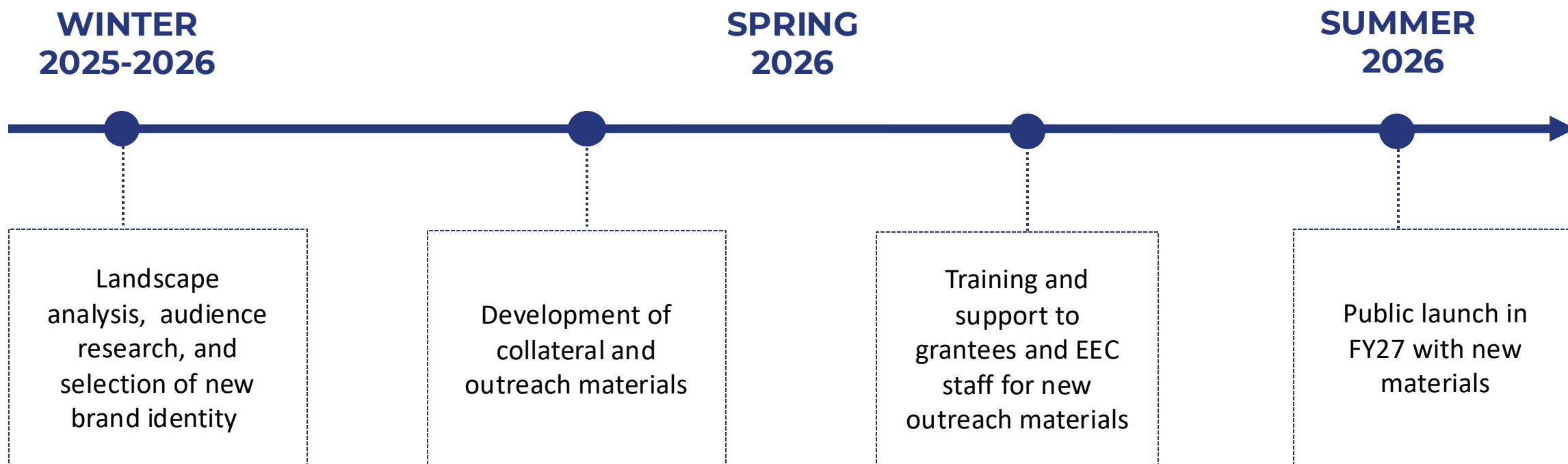
# CFCE Rebrand Objectives

EEC is working to establish a clearer CFCE Network identity through rebranding.



The agency has been conducting focus groups with CFCE Grantees and recognizes the need for a new name. Grantees agree that the CFCE name is long, confusing and undercuts families understanding of what CFCE offers.

# Timeline and Next Steps





# Partner and Provider Voices

# Partner: Children's Trust



**Jennifer Valenzuela**  
Executive Director at The Children's Trust

# Panel: CFCE Providers



**Kathy Torosian**

Municipal Lead Agent,  
Lynn Public Schools  
CFCE Coordinator  
City of Lynn



**Cindy Horgan**

501C3 Lead Agent,  
Director of CFCE Services  
and Director of Family Support Services  
Cape Cod Children's Place



**Kelley Ford**

CAP Lead Agent,  
Program Manager for  
the CFCE and ParentChild+  
Making Opportunities Count



# Family Advisory Council

# Background

The Family Advisory Council will be a link threading families, educators, and other stakeholders.

The Council will help build a more inclusive, responsive and effective early learning, out-of-school time, and residential child care system by:

- Informing policy and program decisions
- Elevating parents' voices and embedding an approach that partners with families in leadership spaces
- Help EEC optimize connection of high priority families with programming and resources

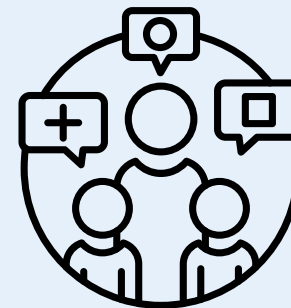


# Composition



## Membership

Families from across the Commonwealth, including parents, caregivers, and guardians of children currently enrolled in early education, residential, and out of school time programs.



## Representation

Diverse representation based on lived experience with EEC and other public systems, income, language, and geography



# Goals



Provide a forum for families to offer input on EEC policies and programs at the state level



Promote family engagement in the decision-making process to improve mixed-delivery system



Inform and advocate for state-level resource allocation that supports high-quality programming



Strengthen partnerships between families, providers, and state agencies



Identify the unique needs and challenges faced by diverse families in accessing and benefiting from early education

# Family Advisory Council Next Steps

Building off the work of the Design Committee our next steps are:

- 1 **Winter 2025/26:** Application period
- 2 **Early Spring 2026:** Application review and selection
- 3 **Late Spring 2026:** Launch of the Family Advisory Council

EEC is seeking applicants with an interest in serving their community with some community leadership and/or EEC programming experience. Applicants should have some familiarity with EEC's programs, mission and values.

**Application will be available on [Mass.gov/EECFamilyAdvisory](https://Mass.gov/EECFamilyAdvisory)** and in English, Spanish, Portuguese, Haitian Creole and Simplified Chinese. Meetings will be in English.



# Thank you!

View Agency KPI Dashboards (updated monthly) [here](#).

Next Meeting: January 14, 2026 (EEC Boston Office)