

Doyle Park Improvements Project

April 13, 2022



The Lawrence &
Lillian Solomon
Foundation

P.O.H.W.E.R.
People of Hyde Park Wanting Equal Representation

People of Hyde Park Wanting
Equal Representation



Southwest Boston Community
Development Corp.

Horsley Witten Group
Sustainable Environmental Solutions



offshoots
PRODUCTIVE LANDSCAPES



Massachusetts Department of
Conservation & Recreation



Commonwealth of Massachusetts

Governor

Charles D. Baker

Lieutenant Governor

Karyn E. Polito

Energy and Environmental Secretary

Kathleen A. Theoharides

Department of Conservation and Recreation Acting Commissioner

Stephanie C. Cooper

Meeting Logistics

- You will have the opportunity to submit comments over the course of the next 2 weeks at:
 - DCR Public Comments <https://www.mass.gov/forms/dcr-public-comments>
- Two ways to ask questions during the meeting
 - Use chat feature
 - Raise your hand using the Teams function, and you will be given permissions to unmute and speak.
- *Please note that this public meeting will be recorded; the recording will be a public record.*



DCR MISSION

To protect, promote and enhance our
commonwealth of natural, cultural
and recreational resources
for the well-being of all.

Agenda

PURPOSE OF THE MEETING

PROJECT TEAM

PROJECT INTRODUCTION

SITE DESIGN

DISCUSSION / QUESTION AND ANSWERS

NEXT STEPS

The purpose of the meeting is to gather community feedback on the schematic design of Doyle Park including:

1. Public Access and Circulation - arrival to the park and circulation throughout.
2. Programming - site amenities, open space, programmed and non-programmed activities and events.
3. Visitor Experience - connections to the neighborhood, woodland and river.



CLIENT



LANDSCAPE ARCHITECTURE



CIVIL ENGINEERING AND PERMITTING

PROJECT TEAM



COMMUNITY STAKEHOLDERS

PROJECT INTRODUCTION

WESLEY
ROSS
PLAYGROUND



SHOPS AT
RIVERWOOD

DOYLE
PARK



NEPONSET RIVER GREENWAY



PROJECT INTRODUCTION



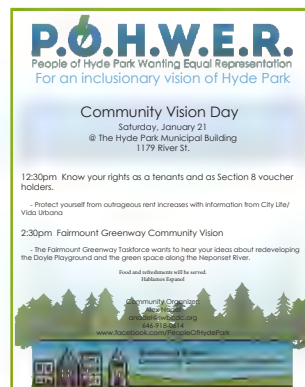
DOYLE PARK 2016



DOYLE PARK 2021

PROJECT INTRODUCTION

RECENT HISTORY



Community Vision Day



Doyle Playground Transformation



Community Day



Hyde Park/Mattapan Neighborhood Forum

Offshoots & Horsley
Witten Site Clean Up

SWBCDC Paints Mural
& Steering Committee
Meeting #2

Steering Committee
Meeting #1

Community
Meeting
#1

Steering Committee
Meeting #3

Community
Meeting
#2

Pop Up Park
Final Plan



Doyle Park and Greenway
Revitalization Project
Community Meeting



PROJECT INTRODUCTION

OPPORTUNITIES AND CONSTRAINTS



SHOPS AT
RIVERWOOD

VISUAL CONNECTION

CHURCH

RIVER
VIEW

RIVER ST

ONE
CONNECTED
PARK

RESIDENCE

INVASIVE
TREES

FOOT PATH

25' SETBACK

RIVER
VIEW

RIVER
VIEW

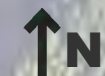
FENCE

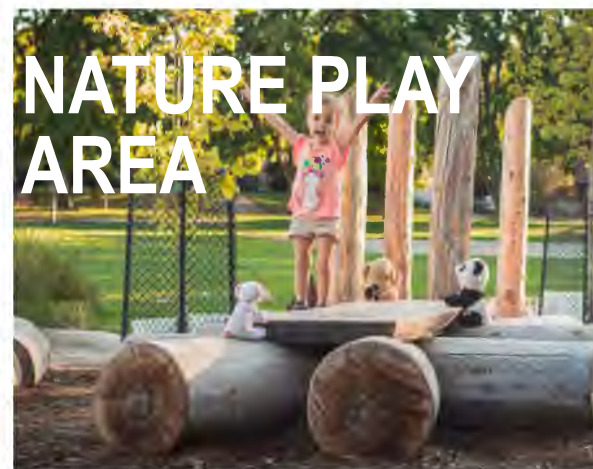
COMMUNITY
CONNECTION

RIVER ST
TERRACE
APARTMENTS

EASEMENT

OUTFALL





1

COMMUNITY DRIVEN

2

REALISTIC/ MAINTAINABLE

3

ECOLOGICALLY ENHANCED, CONNECTED TO
RIVER AND REGIONAL PATH SYSTEM

4

SAFE



CONCEPT DESIGN (2018)

NEW METAL FENCE
OR WOOD GUARD
RAIL ALONG STREET

DCR MARKER

RIVER STREET

BOLLARD LIGHTS (TYP.)
- 12 TOTAL

GRASSY PLAY AREA

MOUND + BOULDER
ELEMENTS FOR PLAY

UNDERSTORY
PLANTING

WOOD GUARD
RAIL ALONG
STREET

RIVER STREET TERRACE

RIVER STREET TERRACE
APARTMENTS

TRASH RECEPTACLE (TYP.)

STREET ENTRANCE +
DCR MARKER

BENCHES (TYP.) - 9 TOTAL

TRASH RECEPTACLE (TYP.) - 3 TOTAL

BIKE RACKS (TYP.) - 3 TOTAL

10' POST LIGHTS (TYP.) - 6 TOTAL

CHURCH

MURAL WALL WITH UPLIGHTS

STAGE / DECK

SEAT WALL

TALL EVERGREEN SCREENING
PLANTS

EXISTING MURAL

OUTLETS
FOR STAGE
USE AT LIGHT
FIXTURES

STAGE

RIVER VIEW PLAZA
WITH PERMEABLE
PAVERS

OPEN
VIEWS
TO RIVER

VIEW
TO
DAM

RIVER OVERLOOK
WITH SEATING
AND VIEW TO
DAM

WOODLAND/ RIVER
VIEW PICNIC AREA
WITH MULCH
SURFACE

EXISTING
STORMWATER
OUTFALL

NEPONSET RIVER

ADA ACCESSIBLE
WOODLAND PATH
+ EDUCATIONAL
SIGNAGE

EXISTING
WOODLAND

RIVER TRAIL

SHOPS AT RIVERWOOD

PATH CONNECTING TO
SHOPS AT RIVERWOOD

FUTURE
CONNECTION

PARK ENTRANCE +
DCR MARKER



SHOPS AT RIVERWOOD

SCHEMATIC DESIGN

RENDERED PLAN

RIVER STREET

ENTRY
SIGNAGE

BIKE
RACKS

POLE LIGHT (3X)

SLOPING
BOULDER
FIELD

PARK
BENCH

RIVER ST
TERRACE
APARTMENTS

RIVER ST TERRACE

CHURCH

UPPER
LAWN

STAGE AT
EXISTING MURAL

PICNIC AREA

NATURE BASED
PLAY

LOWER
LAWN

EXISTING
WOODLAND

STEPPED
CONNECTOR TRAIL

NEPONSET
RIVER

FUTURE
CONNECTION

RIVER TRAIL

RIVER
OVERLOOK



SCHEMATIC DESIGN

CIRCULATION DIAGRAM



 PRIMARY ENTRANCE
DCR GRANITE MARKER

 SECONDARY ENTRANCE

 PRIMARY PARK PATH
6'-0" WIDE PATH

 RIVER TRAIL
5'-0" WIDE TRAIL

 STEPPED CONNECTOR TRAIL
4'-0" WIDE TRAIL

SCHEMATIC DESIGN

PROGRAMMING DIAGRAM

- PERFORMANCE/ EVENT SPACE
- UPPER LAWN: CENTRAL GATHERING AREA AND ACTIVITY ZONE
- NATURE BASE PLAY
- LOWER LAWN: PASSIVE RECREATION
- SEATING / OVERLOOK
- PICNIC TABLE
- PARK BENCH
- POLE LIGHTS
- SPLIT RAIL FENCING
- NEW PERIMETER FENCING



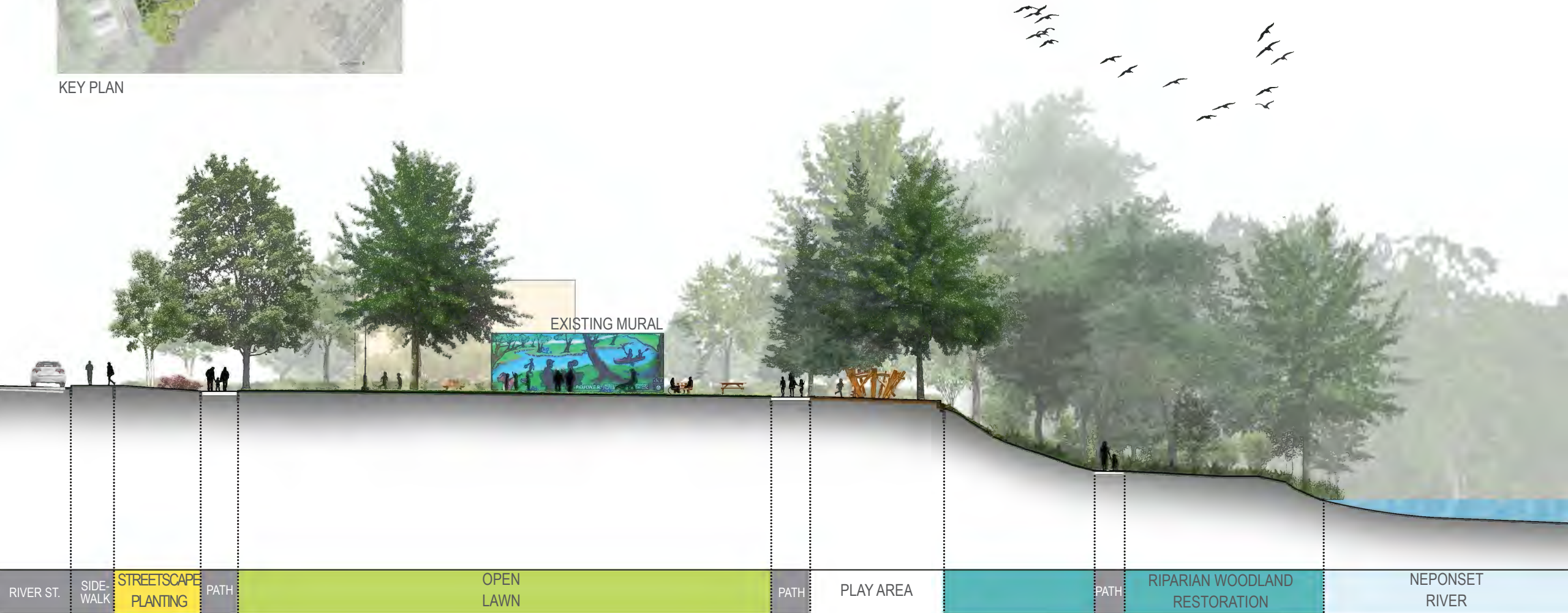


KEY PLAN



SCHEMATIC DESIGN

SECTION



SCHEMATIC DESIGN

CHARACTER IMAGE





DISCUSSION / QUESTION AND ANSWERS



The Lawrence &
Lillian Solomon
Foundation



People of Hyde Park Wanting
Equal Representation



Southwest Boston Community
Development Corp.

Horsley Witten Group
Sustainable Environmental Solutions



offshoots
PRODUCTIVE LANDSCAPES



Massachusetts Department of
Conservation & Recreation

NEXT STEPS

WE ARE HERE



DESIGN PHASE #3

DESIGN PHASE
COMPLETE

BEGINNING OF
CONSTRUCTION

FINAL
COMPLETION

DESIGN
DEVELOPMENT

CONSTRUCTION
DOCUMENTATION

BIDDING

CONSTRUCTION

APR

MAY

JUNE

JULY

AUG

SEPT

OCT

NOV

DEC

JAN

FEB

MAR

APR

MAY

JUNE

JULY

2022

2022

2023

Additional Information

- Recording and tonight's slide deck will be available at:
 - www.mass.gov/dcr/past-public-meetings
- If you have comments on this project:
 - *Submit online:* www.mass.gov/dcr/public-comment
 - *Deadline: Wednesday, April 27, 2022*

Please note: the contents of comments submitted to DCR, including your name, town and zip code, will be posted on DCR's website. Additional contact information provided, notably email address, will only be used for outreach on future updates to the subject project or property.

- If you wish to subscribe to a DCR general information or project-related listserv: contact DCR's Office of Community Relations via email at mass.parks@mass.gov



THANK YOU!



The Lawrence &
Lillian Solomon
Foundation



People of Hyde Park Wanting
Equal Representation



Southwest Boston Community
Development Corp.

Horsley Witten Group
Sustainable Environmental Solutions



offshoots
PRODUCTIVE LANDSCAPES



Massachusetts Department of
Conservation & Recreation

SCHEMATIC DESIGN

PLANT COMMUNITIES DIAGRAM



STREETSCAPE PLANTING

Populus tremuloides, *Nyssa sylvatica*, *Platanus occidentalis*, *Tilia americana*, *Ulmus americana*, *Acer rubrum*

PERIMETER BUFFER

Amelanchier spp., *Viburnum* spp., *Aronia* spp., *Acer* spp., *Quercus* spp., *Betula* spp., *Nyssa sylvatica*, *Thuja occidentalis*, *Ilex opaca*

OPEN LAWN

Polyculture seeded lawn including microclover (for nitrogen fixation) and fine fescues to maximize drought tolerance and compaction resistance.

NO MOW FESCUE

RIPARIAN WOODLAND EDGE

Carya ovata, *Quercus* spp., *Betula* spp., *Nyssa sylvatica*, *Platanus occidentalis*, *Tilia americana*, *Hamamelis virginiana*, *Acer* spp. Ferns

RIPARIAN WOODLAND SLOPES

Cornus spp., *Viburnum* spp., *Aronia* spp., *Rubus* spp., *Lindera benzoin*, *Betula* spp., *Alnus* spp., *Clethra* sp.

RIPARIAN THICKET

Smilax sp., *Cornus* spp., *Viburnum* spp., *Salix* spp., *Rubus* spp., *Aronia* spp., *Lindera benzoin*, *Betula* spp., *Populus deltoides*, *Clethra* sp.

RIPARIAN URBAN WOODLAND RESTORATION

Populus deltoides, *Betula* spp., *Nyssa sylvatica*, *Platanus occidentalis*, *Tilia americana*, *Quercus bicolor*, *Hamamelis virginiana*, *Acer* spp. Ferns, *Symphotrichum* spp., *Vaccinium* spp.