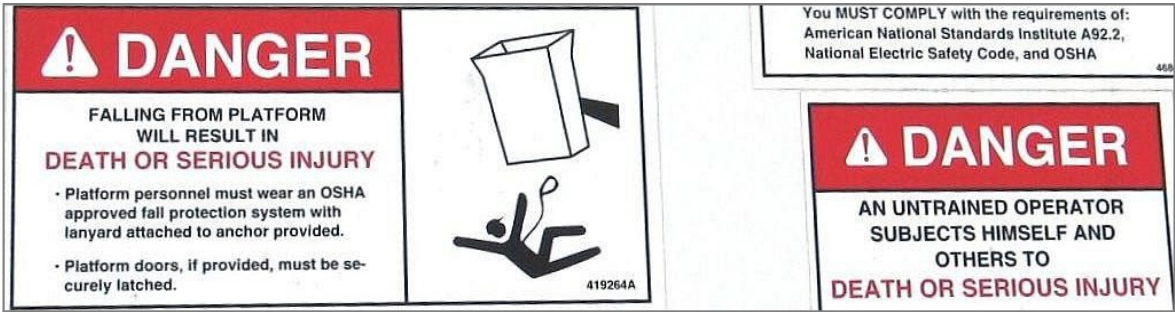


SAFETY ALERT—Please Post

Employees Must Wear Fall Protection when Working from Aerial Lifts



What happened in Massachusetts?

During 2011 and 2012, two municipal workers were fatally injured while repairing traffic lights: each was working from the raised bucket of an aerial lift truck and was thrown from the bucket when struck by a passing tractor-trailer.

In each incident:

- The trucks were parked as far to the right side of the road as possible, and the trucks’ buckets extended overactive travel lanes so the workers could access the traffic lights.
- The victims were not wearing fall protection, so when the passing tractor trailers hit the buckets, they bounced out and fell nearly 17 feet to the road below.

What can be done?

Both deaths could have been prevented if fall protection had been used. When performing work from any vehicle mounted elevated platform:

- **Fall protection must be provided** to workers and used properly.

Additionally, when working in or near roadways:

- **Work zones should be set up appropriately** to minimize worker exposure to moving vehicles.

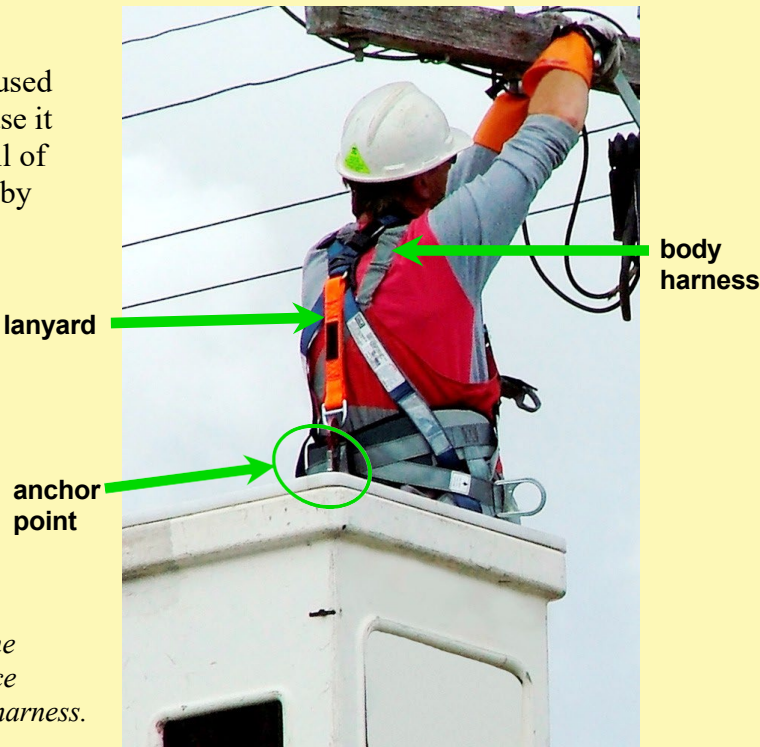
Ensure Use of Fall Protection

The best type of fall protection equipment to be used with aerial lift trucks is a **restraint system** because it keeps the worker in the bucket and prevents a fall of any distance, even if the truck’s bucket is struck by an oncoming vehicle.

A restraint system consists of:

- a body belt or harness
- a lanyard, no longer than 2 feet
- an anchor point (this will come attached to the aerial lift truck)

A personal fall arrest system may also be used. A fall arrest system allows the worker to fall out of the bucket but prevents the worker from hitting the surface below. Fall arrest systems require the use of a body harness.



See reverse for work zone safety and training recommendations ➡



FACE Facts | MA FACE MA FACE (Massachusetts Fatality Assessment and Control Evaluation) seeks to prevent work fatalities by identifying and investigating these incidents and developing prevention strategies for those who can intervene in the workplace. MA FACE is supported by cooperative agreement # 2U60OH008490-06 from CDC-NIOSH. This document may be copied freely and found online at mass.gov/dph/FACE. If you have comments or questions, call the MA FACE Project at 1-800-338-5223.



Set Up Work Zones Appropriately to Keep Passing Motor Vehicles at a Distance

Set up the roadway work zone using temporary traffic control devices and positioning in accordance with the Manual on Uniform Traffic Control Devices, Part 6 (see resources).



Never allow motor vehicle traffic to pass underneath or within close proximity of an aerial lift truck's raised platform or its boom. In addition to fatalities, there have been serious injuries to municipal workers on aerial lifts resulting from passing tractor trailers hitting either the truck's bucket or the boom.



Visual of how each victim was struck by the passing tractor trailer. A truck's bucket and boom should be positioned away from passing traffic, with visible work zone signage.

Instead:



When using an aerial lift truck along a roadway, always position it directly underneath the area being accessed whenever possible.



Cones must extend sufficient distance from the truck to ensure that traffic is directed far enough around the truck's bucket or boom to prevent struck-by incidents.

Train Workers on Fall Protection and Work Zone Setup

The previous recommendations can be achieved only when adequate safety training is provided to employees. Training should include, but not be limited to:

- selecting and properly using fall protection equipment;
- selecting and properly setting up the most effective work zone configuration;
- working near traffic in a way that minimizes exposure to moving vehicles; and
- proper techniques for warning device usage, placement, and retrieval.

Training will not only provide employees with knowledge to better protect themselves but will help to keep pedestrians and motorists in the community safe as well.

Resources

Massachusetts Department of Labor Standards

Aerial Lift/Bucket Truck Hazard Alert: For Public Works Employers and Employees in Massachusetts.
mass.gov/doc/aerial-lift-bulletin/

Massachusetts Department of Public Health

The MA FACE Project investigates work-related fatalities and develops prevention recommendations. Full reports of incidents are available for free online, including those referenced in this fact sheet.
mass.gov/dph/FACE

U.S. Department of Transportation, Federal Highway Administration

Manual on Uniform Traffic Control Devices (MUTCD). 2009 Edition. <http://mutcd.fhwa.dot.gov>

U.S. Department of Labor, Occupational Safety and Health Administration

OSHA Quick Cards: *Aerial Lifts—Protect Yourself.*
osha.gov/Publications/aerial_lifts_safety.html

OSHA Fact Sheet: *Aerial Lifts.*
osha.gov/Publications/aerial-lifts-factsheet.pdf
