



MASSACHUSETTS DEPARTMENT OF
CONSERVATION AND RECREATION

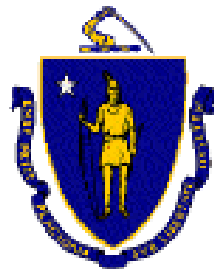
DRAW SEVEN PARK RENOVATION PROJECT

SOMERVILLE, MASSACHUSETTS



DCR Public Meeting

Monday, February 5th – 6:30pm-8:30pm
East Somerville Community School
50 Cross Street, Somerville, MA, 02145



Commonwealth of Massachusetts

Governor

Charles D. Baker

Lieutenant Governor

Karyn E. Polito

Energy and Environmental Secretary

Matthew A. Beaton

Department of Conservation and Recreation Commissioner

Leo P. Roy

City of Somerville Mayor

Joseph A. Curtatone



DCR Mission Statement

*To protect, promote and enhance our
common wealth of natural, cultural
and recreational resources
for the well-being of all.*



Purpose of Meeting

*Presentation of and solicitation of
public comments on the
schematic design options
proposed for the renovation of
Draw Seven Park in Somerville.*

Regional Context



**REGIONAL CONTEXT &
TRAIL SYSTEMS MAP**

— EXISTING TRAIL
- - - PROPOSED TRAIL







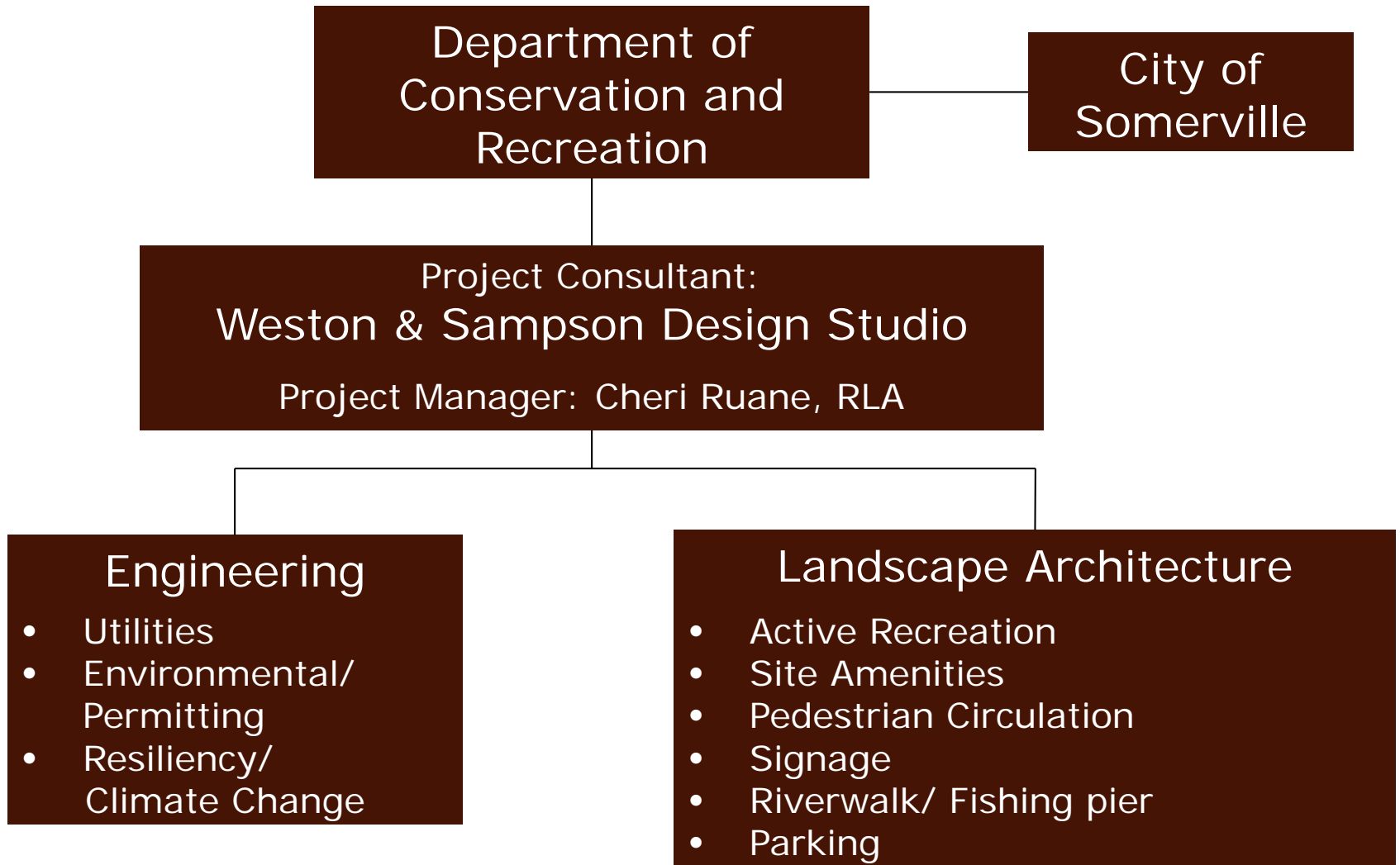
DCR Guiding Principles

- Engage the public in a park design process
- Address the health and recreational needs of adjacent communities
- Accommodate appropriate passive and active recreation needs
- Analyze and improve ADA access
- Explore “green” products and practice
- Minimize DCR’s park maintenance needs

Project Goals

- Improve the fishing dock area
- Evaluate the potential of a conceptually proposed music venue
- Ensure adequate security and protection of DCR’s Amelia Earhart Dam
- Link the Mystic River Greenway paths
- Restore the river edge condition
- Provide opportunities for social gatherings
- Incorporate native landscape plantings and park furnishings

Draw Seven Project Team



Scope of Project

- Public meetings & public outreach
- Site survey
- Site analysis
- Schematic design options & cost estimates
- Construction documents
- Permitting
- Construction support



Existing Conditions



Existing Conditions



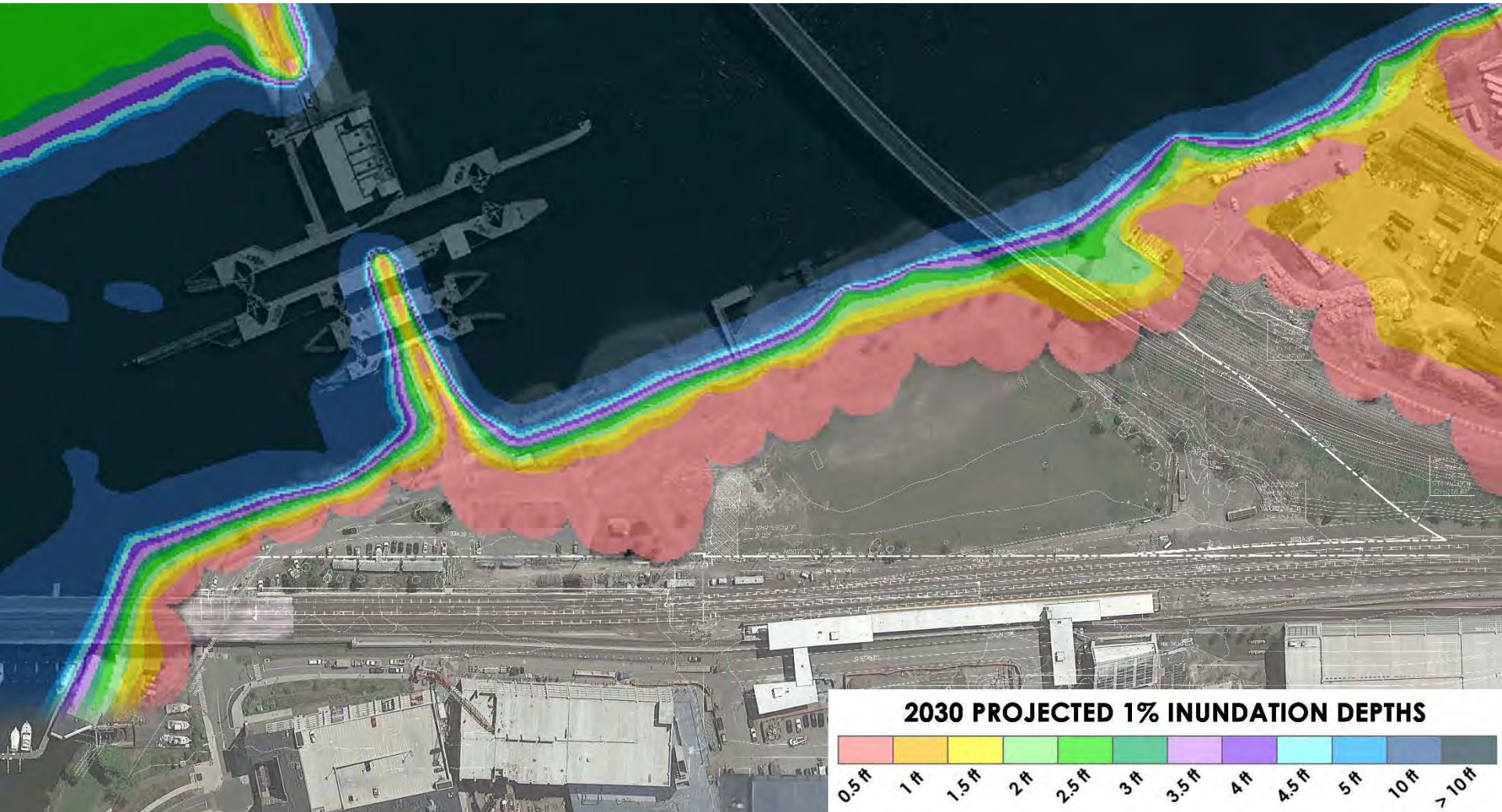
Existing Conditions



Site Analysis - General



Site Analysis – Climate Resiliency



2030 PROJECTED 1% INUNDATION DEPTHS

Permitting

- **Conservation Commission Notice Of Intent**
Open public meeting
- **Mass DEP Chapter 91**
The Massachusetts Public Waterfront Act
- **DCR Dam Safety Permit**



Design Program

Essential Programs:

- Continued river walk access to fishing pier
- Multi-use sports field
- Passive recreation space
- Living shoreline
- Flexible plaza
- Parking spaces
- DCR dam access

Other Considerations:

- Climate resiliency strategy
- Continued Alford Street connection/ path
- Music venue feasibility analysis
- Bike/ pedestrian bridge (25% design)
- MBTA headhouse connection



Resiliency Program



Elevate and Protect

- Elevate grades for critical site features
- Elevated walkways
- Flood barriers

Image credit: Brooklyn Bridge Park, Julianne Schaer



Incremental Adaptation

- Identify site evolution and layout
- Design park for future climate impacts
- Downstream protection

Image credit: Brooklyn Bridge Park, Etienne Frossard



Embrace Water

- Identify areas to embrace water for frequent flooding and design storm events

Image credit: Brooklyn Bridge Park, Julianne Schaer

CLIMATE RESILIENCE MEASURES TO MANAGE CHRONIC AND ACUTE CHANGES IN ENVIRONMENT OVER TIME

Schematic Design Concepts



Concept #1
"Curves"

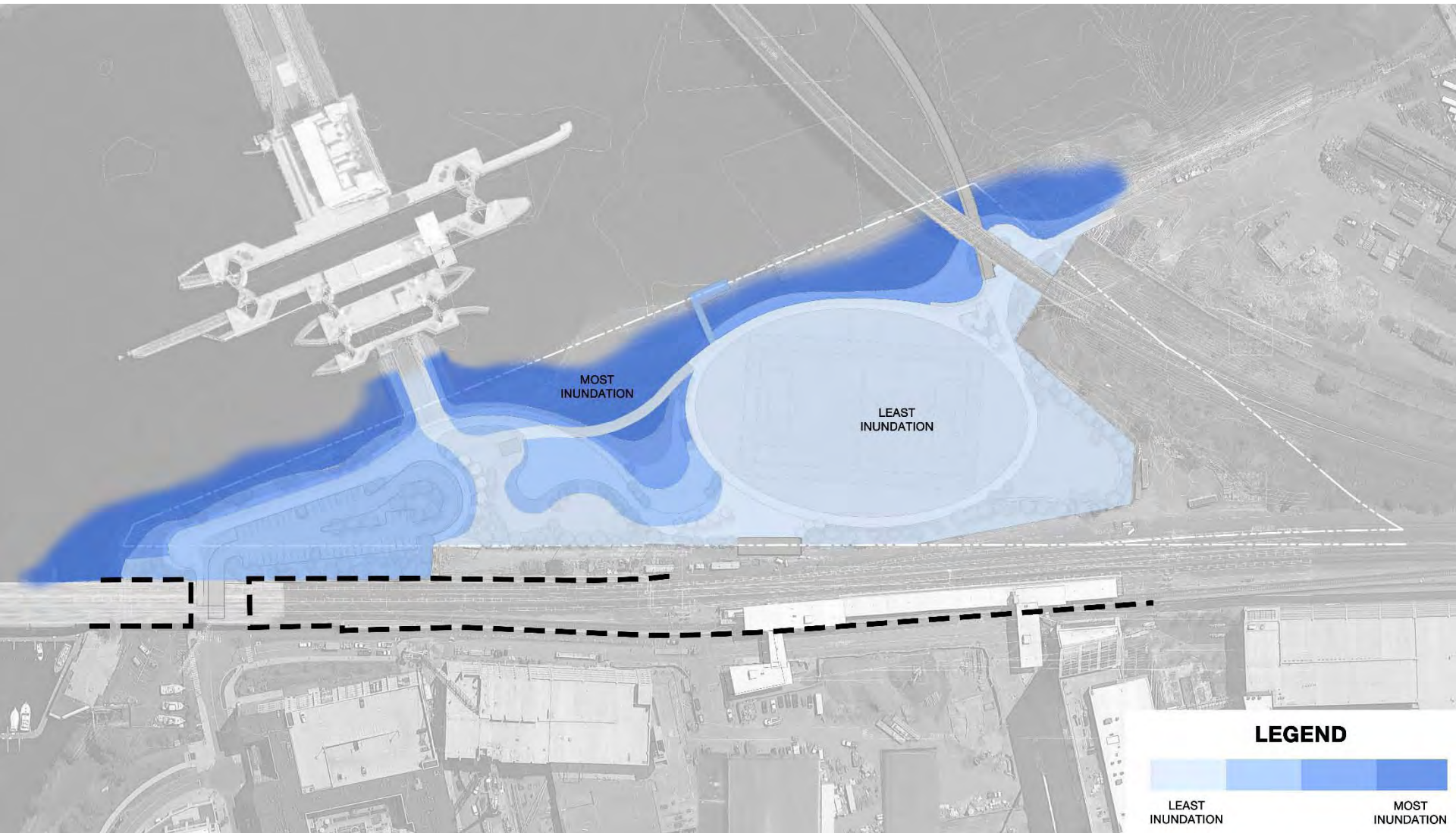


Concept #2
"Angles"

Concept #1 - "Curves"



Concept #1 Inundation Diagram



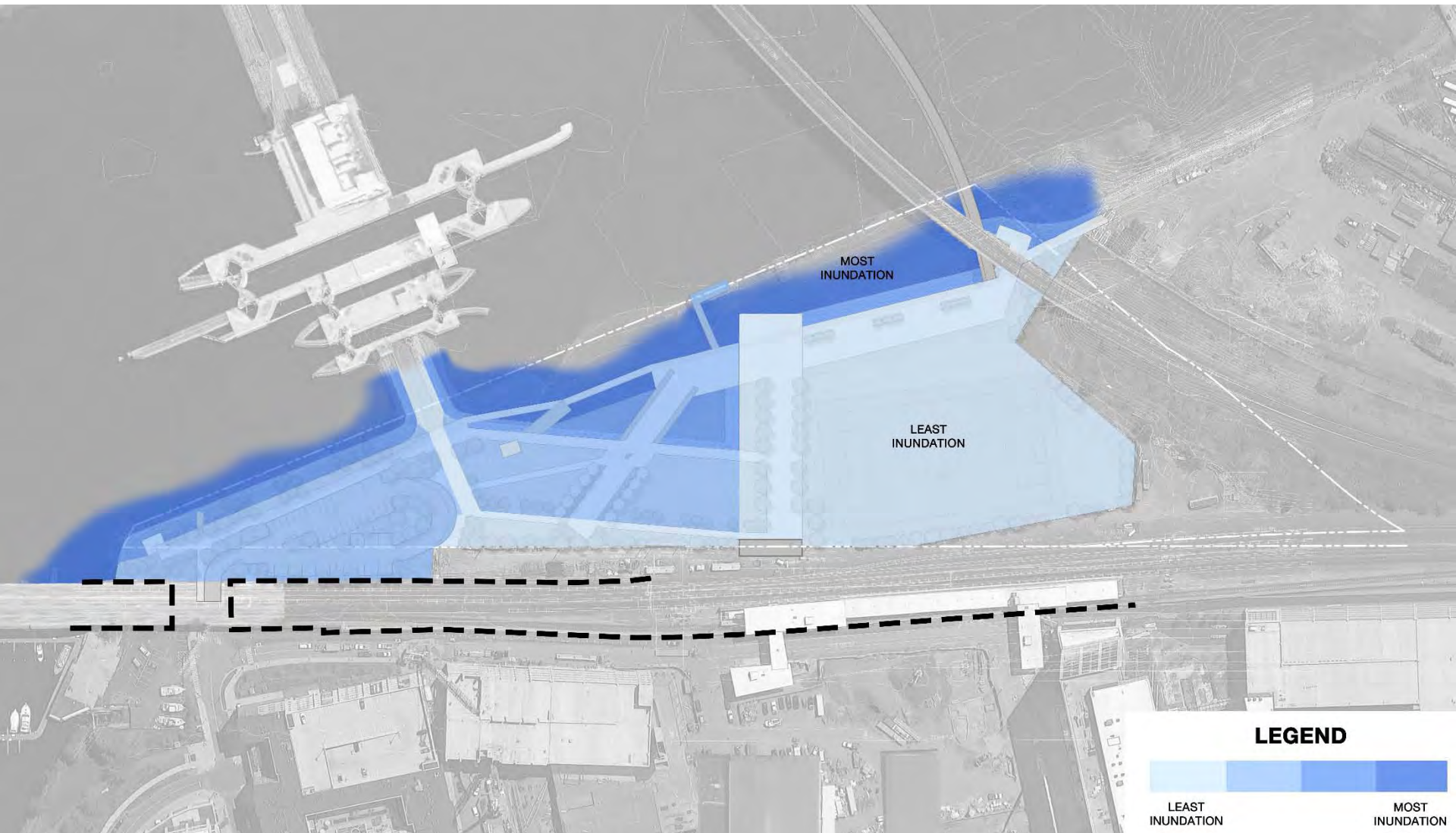
Concept #1 Precedent Images



Concept #2 – “Angles”



Concept #2 Inundation Diagram



Concept #2 Precedent Images



Design Concepts Comparison



Concept #1
"Curves"



Concept #2
"Angles"

35.3%	Hardscape	40.8%
53.6%	Softscape	48.1%
44 (6 ADA)	Parking	52 (6 ADA)
11.1%	Synthetic turf (100yd x 55yd)	11.1%

Design Concepts Characteristics



Concept #1
"Curves"

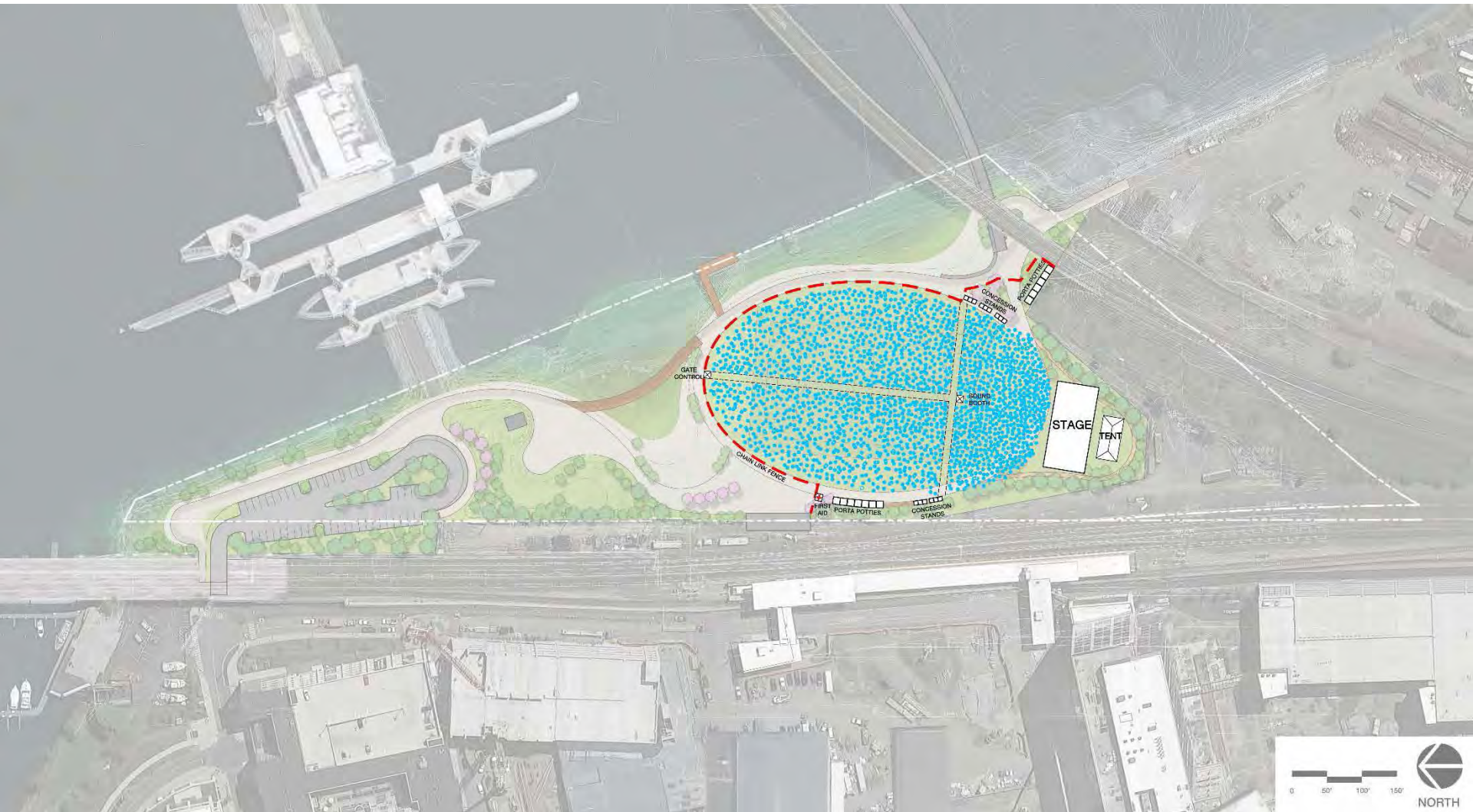
- Curvilinear form
- Focus within the park
- Uses topography to define space



Concept #2
"Angles"

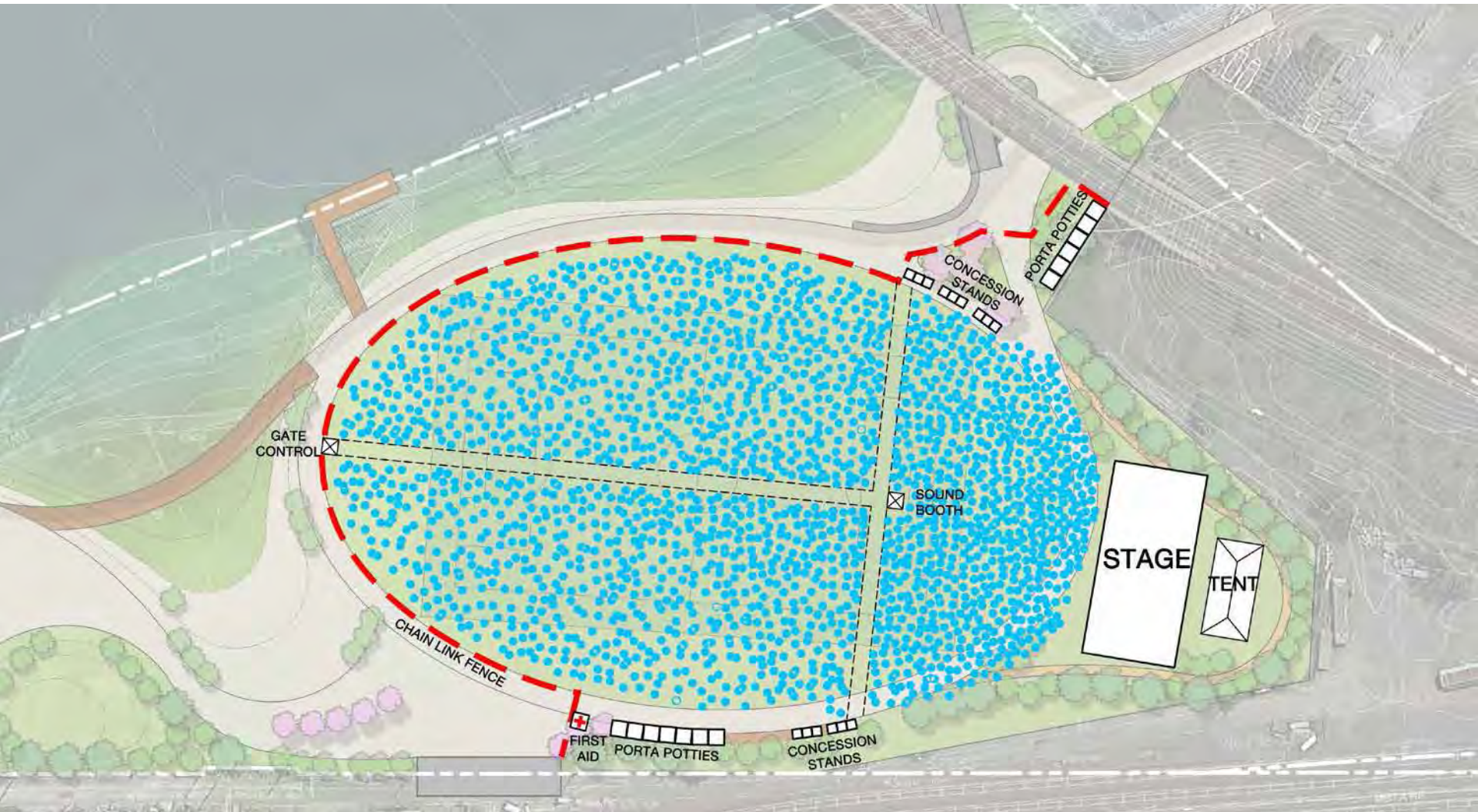
- Linear & angular form
- Responds to post-industrial context
- Uses pedestrian circulation to define space

Concept #1 Music Venue Scenario



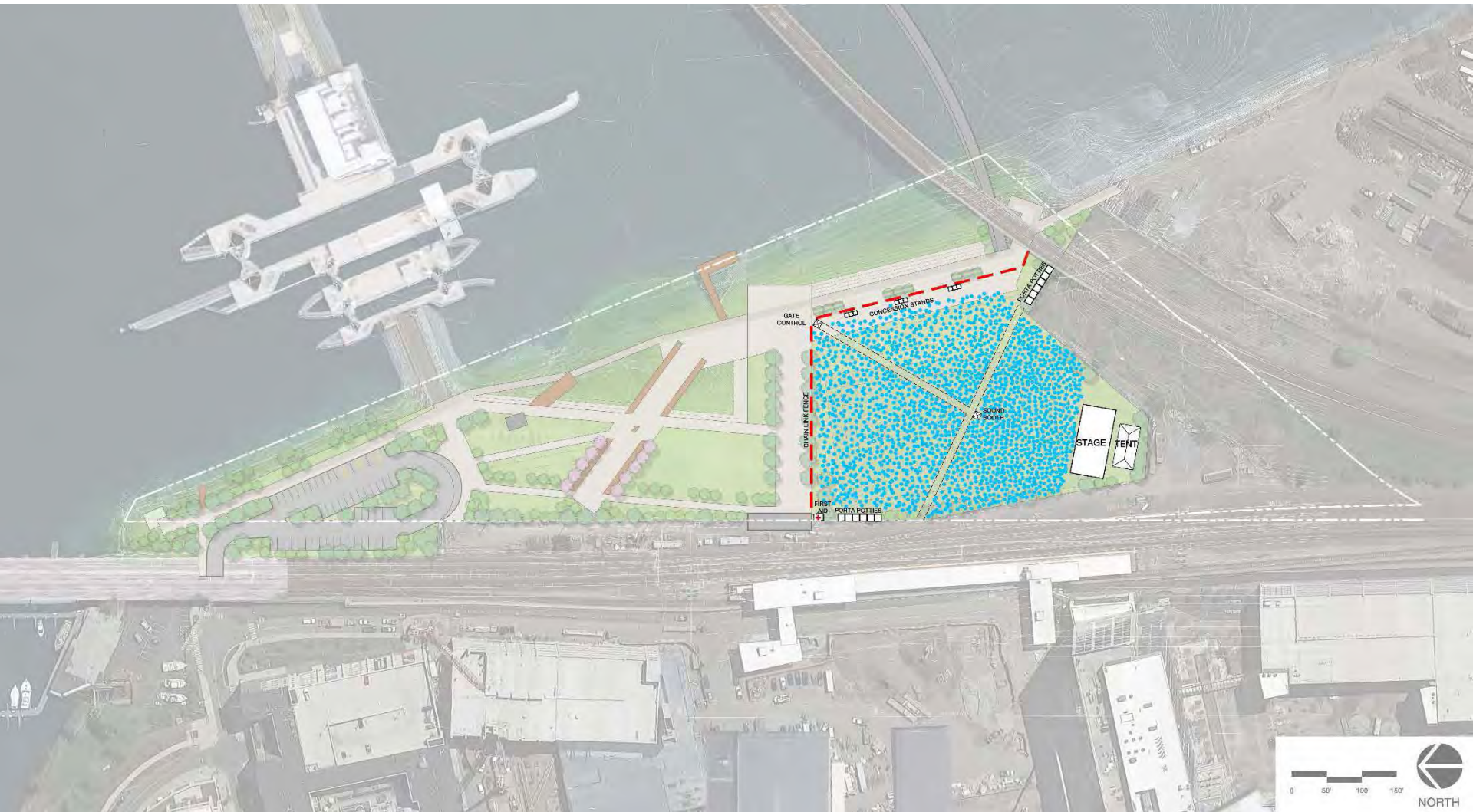
Crowd Size ≈ 2,000

Concept #1 Music Venue Scenario



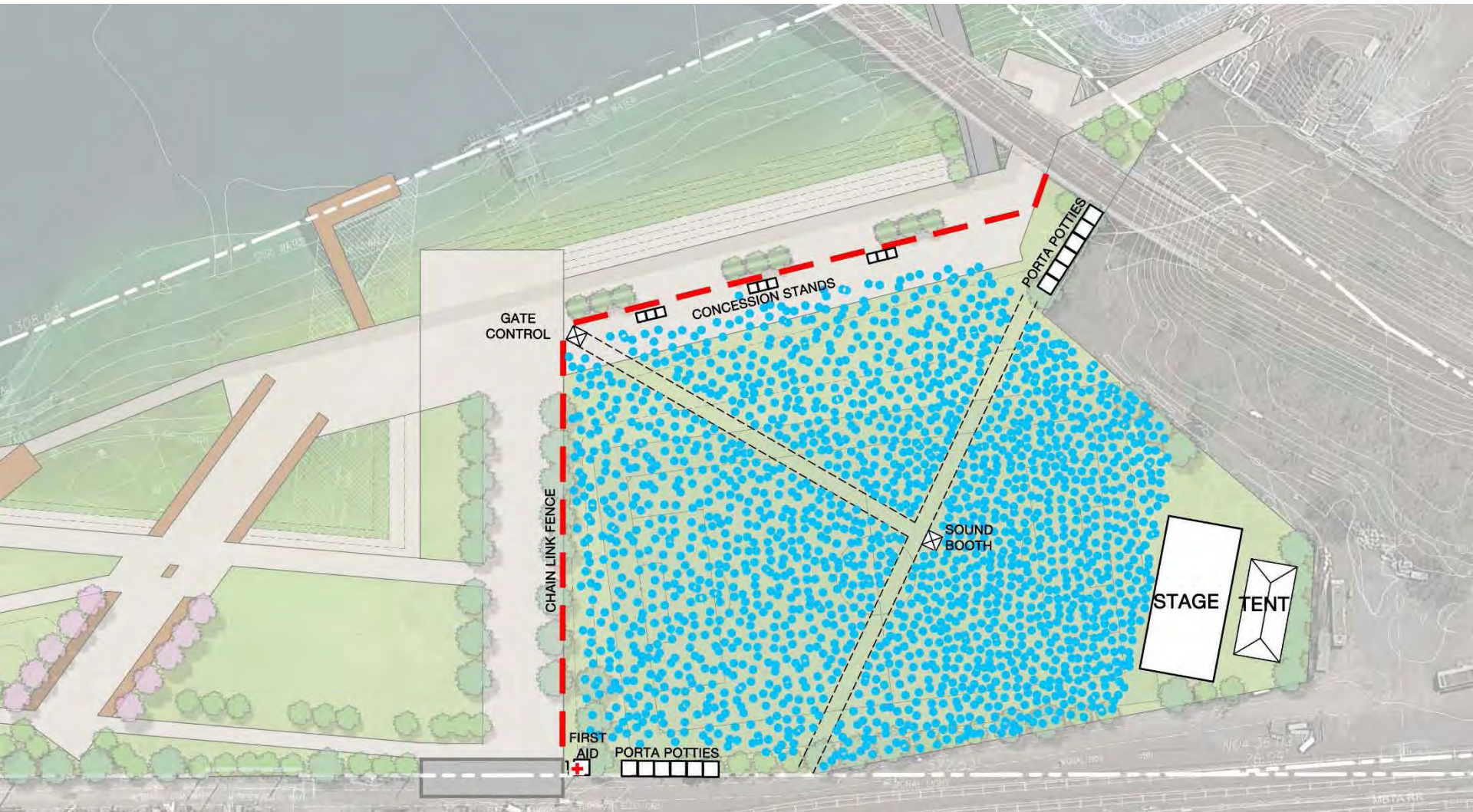
Crowd Size ≈ 2,000

Concept #2 Music Venue Scenario



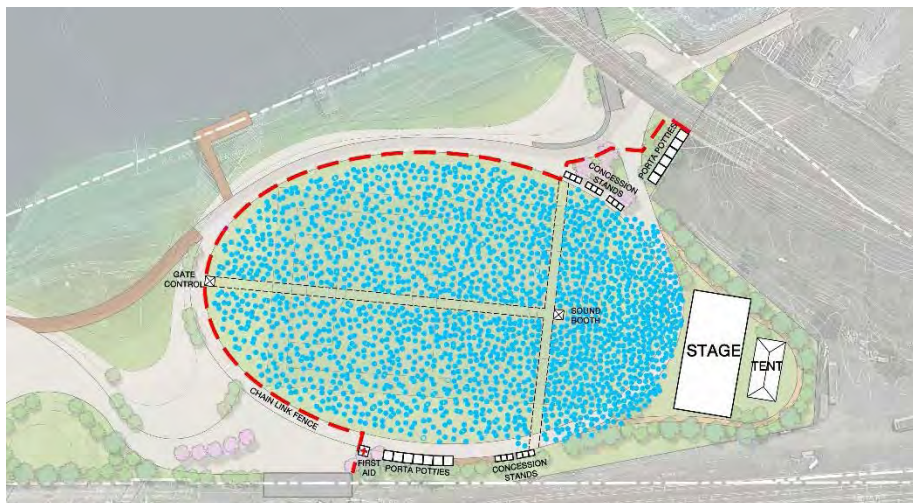
Crowd Size ≈ 1,800

Concept #2 Music Venue Scenario



Crowd Size ≈ 1,800

Music Venue Feasibility Study



Opportunities:

- Attract more visitors
- Bring revenue for nearby businesses
- Promotion of performing arts
- Unique waterfront location
- Ticketed & non-ticketed events accommodated

Issues:

- Public circulation concerns
- Setup and break down time impacts park availability
- Impacts to local traffic congestion
- Sports field and park wear and tear/ maintenance issues

Project Schedule

Goal:

- | | |
|------------------------|-----------------------------|
| • Spring & Summer 2018 | Public process |
| • Fall 2018 | 100% construction documents |
| • Spring 2019 | Implementation begins |



COMMENTS & QUESTIONS?





Additional Information

For more information:

<http://www.mass.gov/eea/agencies/dcr/public-outreach/public-meetings/>

If you have comments or suggestions on this project:

Submit online:

<https://www.mass.gov/forms/dcr-public-comments>

Write: Department of Conservation and Recreation
Office of Public Outreach
251 Causeway Street, Suite 600
Boston, MA 02114

Deadline: Monday - February 26, 2018

Note: Public comments submitted to DCR may be posted on the DCR website in their entirety, and no information, including contact information, will be redacted.

If you wish to subscribe to a DCR general information or project-related listserv: contact DCR's Office of Community Relations at 617-626-4973 or Mass.Parks@state.ma.us.