

EXHIBIT C – ARMORY LOCATIONS AND FACILITY SUMMARIES
for
FACILITY CONDITION ASSESSMENTS OF
MASSACHUSETTS ARMY NATIONAL GUARD ARMORIES

The Army National Guard has both Federal and State missions. On the Federal level, it expands the operational capacity of the U.S. Army by maintaining trained and equipped units that can respond immediately to military threats and national emergencies – units who can be mobilized to serve in combat as well as humanitarian operations. On the State and local level, the Army National Guard is a first responder domestically and abroad.

“Army National Guard Readiness Centers (RC’s, formerly called Armories) are essential components in the basic functioning of our society. The Patriot Act of 2001 defined critical infrastructure as those “systems and assets, whether physical or virtual, so vital to the United States that the incapacity or destruction of such systems and assets would have a debilitating impact on security, national economic security, national public health or safety, or any combination of those matters.” Readiness Centers serve as crucial infrastructure to protect our communities from the full spectrum of man-made threat and severe weather events. A crisis of any type requires immediate and effective response from our Army National Guard’s forces. Functional facilities in strategic locations is not only the expected norm, it is the essential standard.

Readiness Center components supporting the training, administrative and logistical requirements of the Army National Guard include assembly space, classrooms and distance learning centers, locker rooms, weapons and protective masks storage, and general purpose training space. As the foundation for operations and response, Readiness Centers act as training grounds, distribution points, command and control hubs, and staging bases for first responders[.]

Integrated into the communities they serve, these facilities also provide shelter and vital services for displaced civilians during emergency events. Whether during no-notice emergencies or anticipated events, the Army National Guard fills a unique and critical role responding to major events that overwhelm local resources.”

Source: Army National Guard Readiness Center Transformation Master Plan – Final Report to Congress, December 19, 2014.

AGAWAM ARMORY *

140 Maynard Street, Feeding Hills / Agawam, MA
Unit(s) Assigned: A/1 – 181 Infantry National Guard

Number of Buildings: 1
Square footage: 13,371 NSF / 15,953 GSF
Number of floors: 1
Year built: 1960

This armory is located on a 128,000 square foot lot. The land is flat and grass covered with 20,296 SF of parking pavement. There is a one story building which covers 15,953 SF and is surrounded by both residential and open forest lots.

The Agawam Armory was built in 1960 making it 57 years old. The structure is made up of a concrete foundation, and load-bearing concrete block walls with a brick veneer. The assembly hall roof structure consists of pitched glue laminated wood beams supporting a wood deck. Concrete panel decking covers the remaining space.

Major Functions

Assembly	
Classrooms	
Training Device / Sim Center	
Kitchen	
Flam Mats. Storage (Locker)	
Administrative Space	
Unit Storage (including Vault)	
Locker Rooms	

** For informational purposes only.*

Site information from the 2009 Maguire Group Report – Subject to verification.



AYER ARMORY *

87 Barnum Road, Ayer, MA

Unit(s) Assigned: 110 Maintenance Company

Number of Buildings: 1
Square footage: 12,058 NSF / 14,925 GSF
Number of floors: 1
Year built: 1964

The Ayer Armory is located on the Fort Devens Military Installation. This armory is sited on an approximately 100,000 SF lot. The facility is a one story building which covers 15,000 SF with a 31,300 SF paved parking area.

The Ayer Armory is 53 years old. The structure consists of load-bearing concrete clock walls with brick veneer. The assembly hall roof structure consists of pitched glue-laminated wood beams and wood decking. Concrete panel decking covers the remainder of the building space.

Major Functions

Assembly Hall	NOTE: This facility contains a kitchen to which soldiers have been assigned as cooks.
Classrooms / Mess Hall	
Kitchen	
Toilets/Showers	
Recruiting / Retention	
Administrative	
Unit Storage (including Vault)	

** For informational purposes only.*

Site information from the 2009 Maguire Group Report – Subject to verification.



BOURNE ARMORY *

31 Armory Rd, Bourne, MA
Unit(s) Assigned: 379th EN(-)

Number of Buildings: 2
Square footage: 15,988 NSF / 19,078 GSF
Number of floors: 1
Year built: 1957

The Bourne Armory is located on a 106,000 SF grass covered lot that is sloped across the buildings length. The building covers 19,078 square feet with 55,000 SF of parking pavement. It is surrounded by open space and highway. It consists of an Armory and an unheated storage building.

Built in 1957, the Bourne Armory is 60 years old. The structure is made up of a concrete foundation, and load bearing concrete block walls with a brick veneer. The roof structure consists of glue laminated wood pitched roof beams supporting wood deck, and a concrete panel deck over the remaining space.

Major Functions

Assembly	Toilets/Showers
Classrooms / Mess Hall	Administrative
Library	Unit Storage (including Vault)
Kitchen	

** For informational purposes only.
Site information from the 2009 Maguire Group Report – Subject to verification.*



BRAINTREE ARMORY *

275 Union St. Braintree, MA 02184

Unit(s) Assigned: C/1-182 IN

Number of Buildings: 1**Square footage: 15,307 NSF / 18,376 GSF****Number of floors: 1****Year built: 1956**

The Braintree Armory is on a land grass covered 11,000 SF lot. The building covers 18,376 SF with 39,806 SF of parking pavement that is not organized. It is surrounded by residential and commercial lots.

Built in 1956, the Braintree armory is 61 years old. The structure is made up of a concrete foundation, and load bearing concrete block walls with a brick veneer. The roof structure consists of steel bar joists supporting a concrete panel deck.

Major Functions

Assembly	Flam Mats. Storage (Locker)
Classrooms	Administrative
Training Aid Storage	Unit Storage (including Vault)
Kitchen	Locker Room Space (M only)
Toilets/Showers	

** For informational purposes only.*

Site information from the 2009 Maguire Group Report – Subject to verification.



BRIDGEWATER ARMORY *

576 Bedford St., Bridgewater, MA 02324

Unit(s) Assigned: 189 EN, 220 QM

Number of Buildings: 1**Square footage: 12,748 NSF / 15,773 GSF****Number of floors: 1****Year built: 1960**

The Bridgewater Armory is located on a 80,000 SF flat grass covered lot. The building covers 13,162 SF with 42,000 SF of parking pavement. It is surrounded by commercial lots.

Built in 1960, the Bridgewater Armory is 57 years old. The structure is made up of a concrete foundation, and load bearing concrete block bearing walls with a brick veneer. The roof structure consists of glue laminated wood pitched roof beams supporting a wood deck, and a concrete panel deck over the remaining space. The one story building encloses 15,773 square feet and includes a partial basement.

Major Functions

Assembly	Toilets/Showers
Classrooms / Mess Hall	Flam Mats. Storage (Locker)
Learning Center	Administrative
Kitchen	Unit Storage (including Vault)

** For informational purposes only.*

Site information from the 2009 Maguire Group Report – Subject to verification.



BROCKTON ARMORY *

89 Montauk Road, Brockton, MA 02401

Unit(s) Assigned: HHB/10101 FA

Number of Buildings: 1
Square footage: 19,666 NSF / 23,700 GSF
Number of floors: 1
Year built: 1962

The Brockton Armory is located on a 650,000 SF flat grass covered lot. The lot has 99,933 SF of paved parking. 94,546 of this parking is organizational and 5,287 is non-organizational. The one story building covers 23,700 SF and is surrounded by both residential and open forested lots.

Built in 1962, the Brockton Armory is 55 years old. The structure is made up of a concrete foundation, and load bearing concrete block bearing walls with a brick veneer. The assembly hall roof structure consists of glue laminated wood beams supporting a wood deck, and a concrete panel deck over the remaining space which. (There is a Field Maintenance Shop on premises is not being evaluated.)

Major Functions

Assembly	Physical Fitness
Classrooms	Administrative
Kitchen	Unit Storage (including Vault)
Toilets/Shower	

** For informational purposes only.*

Site information from the 2009 Maguire Group Report – Subject to verification.



CAMBRIDGE ARMORY *

406 Concord Ave., Cambridge, MA 02138

Number of Buildings: 2
Square footage: 23,034 NSF / 27,076 GSF
Number of floors: 1
Year built: 1959

This armory is located on a 105,000 square foot lot. The land is flat and is grass covered with 66,856 square feet of parking pavement all of which is organizational. The building covers 27,076 square feet and is surrounded by school and commercial lots. There is also a garage building on the site.

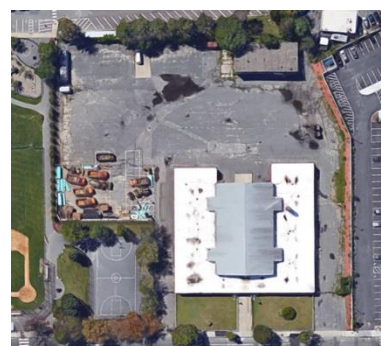
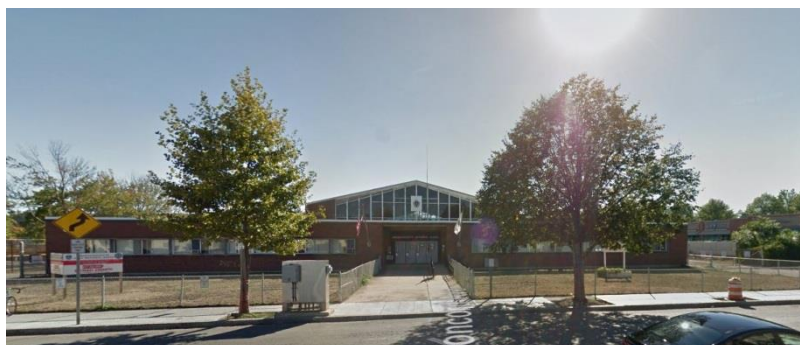
The Cambridge armory was built in 1959 making it 58 years old. The structure is made up of a concrete foundation, and load bearing concrete block walls with a brick veneer. The roof structure consists of glue laminated wood pitched roof beams supporting a wood deck, and a concrete panel deck over the remaining space.

Major Functions

Assembly	Flam Mats. Storage (Locker)
Classrooms / Mess Hall	Recruiting / Retention
Learning Center	Physical Fitness
Kitchen	Administrative
Toilets/Showers	Unit Storage (including Vault)

** For informational purposes only.*

Site information from the 2009 Maguire Group Report – Subject to verification.



CAMP EDWARDS (Falmouth/Mashpee) is the largest training area in the Northeast. It is located on the 22,000 acre Joint Base Cape Cod (JBCC) and serves as the primary pre-mobilization training site for the Massachusetts Army National Guard and Reserve Component units in the Northeast. Numerous buildings are located on the base and relevant structures are summarized below.

CAMP EDWARDS Building 28-08 181 EN (-) ARMORY 5,395 NSF / 7,264 GSF Built: 1969

Major Functions

Break Room	Administrative Space
Toilets / Showers	Unit Storage (including Vault)
Flam Mats. Storage (Locker)	

CAMP EDWARDS Building 31-34 387 EOD ARMORY 3,679 NSF / 8,331 GSF Built: 2007

Major Functions

Classrooms / Mess Hall	Table / Chair Storage
Learning Center	Administrative Space
Kitchen	Unit Storage (including Vault)
Toilets / Showers / Lockers	

CAMP EDWARDS Building 28-14 Aviation Armory 9,017 NSF / 10,561 GSF Built: 1971

Major Functions

Classrooms / Mess Hall	Unit Storage (including Vault)
Toilets / Showers / Lockers	Apparatus / Equipment Area
Flam Mats. Storage (Locker)	Billeting
Administrative Space	Kitchenette
FIRE STATION – One Bay – other 3 Bays FEDERAL	Will be transferred

CAMP EDWARDS Building 28-22 Aviation Armory 28,080 SF Built: 1968

Major Functions

Headquarters for 126 th Aviation Unit	

CAMP EDWARDS Building 31-32**Firefighters Armory**

10,561 SF

Built: 2007

Major Functions

Military Firefighting Unit	

CAMP EDWARDS Building 102**Training Site Headquarters**

1,582 SF

Built: 1941

Major Functions

Cyber Armory (2,75 SF)	Toilets /Showers
Break Room	Special Administration Allowances
Administrative Office Space	Unit Storage (including Arms Vault)



CHICOPEE ARMORY *

371. Armory Dr., Chicopee, MA 01020

Unit(s) Assigned: A/126 BSB

Number of Buildings: 1

Square footage: 18,295 NSF / 22,227 GSF

Number of floors: 1

Year built: 1961

The Chicopee Armory is located on a 188,500 SF flat grass covered lot. The one story building covers 21,600 SF with 41,032 SF of parking pavement. It is surrounded by residential lots.

Built in 1961, the Chicopee Armory is 56 years old. The structure is made up of a concrete foundation, and load bearing concrete block walls with a brick veneer. The roof structure consists of steel bar joists supporting a concrete panel deck.

Major Functions

Assembly	Recruiting / Retention
Classrooms / Mess Hall	Administrative
Training Aid Storage	Unit Storage (including Vault)
Kitchen	Locker Rooms
Toilets/Showers	

** For informational purposes only.*

Site information from the 2009 Maguire Group Report – Subject to verification.



DANVERS ARMORY *

2 Armory Rd, Danvers, MA 01923

Unit(s) Assigned: A/1-101 FA (-)

Number of Buildings: 1
Square footage: 17,810 NSF / 22,204 GSF
Number of floors: 2
Year built: 1968

This armory is located on a 70,000 square foot lot. The building sits on a flat wooded hill top with 22,890 square feet of parking pavement all of which is non-organizational. The building covers 21,059 square feet and is surrounded by open forested and commercial lots and highway.

The Danvers armory was built in 1968 making it 41 years old. The structure is made up of a concrete foundation, and load bearing concrete block walls with brick veneer. The roof structure consists of steel bar joists supporting a concrete panel deck. The building is one story with a partial basement and encloses 22,204 square feet.

A 743 square feet portion of the building is occupied by the local Sheriff's department.

Major Functions

Assembly Hall (includes Balcony)	Recruiting / Retention
Classrooms / Mess Hall	Physical Fitness
Kitchen	Administrative
Toilets/Showers	Unit Storage (including Vault)
Flam Mats. Storage (Locker)	Locker Room Space

** For informational purposes only.*

Site information from the 2009 Maguire Group Report – Subject to verification.



DORCHESTER ARMORY *

70 Victory Rd., Boston, MA 02122

Unit(s) Assigned: 164 Trans BN, 1182 FSC

Number of Buildings: 1

Square footage: 25,970 NSF / 33,635 GSF

Number of floors: 2

Year built: 1956

The Dorchester Armory is located on an estimated 301,000 SF grass/pavement covered lot. The building covers 23,288 SF with 115,514 SF of parking pavement of which 50,904 is organizational and the remaining 15,847 being non-organizational. The property is surrounded by residential and commercial lots. The Armory consists of two buildings, the Armory itself and a Field Maintenance Shop. This FCA will focus on the Armory only.

Built in 1956, the Dorchester Armory is 61 years old. The structure is made up of a concrete foundation, and load bearing concrete block walls with brick veneer. The roof structure consists of steel bar joists supporting a concrete panel deck. The building is two stories and encloses 33,635 SF.

Major Functions

Assembly Hall	NOTE: This facility contains a kitchen to which soldiers have been assigned as cooks.
Classrooms / Mess Hall	
Kitchen	
Toilets/Shower	
Flam Mats. Storage (Locker)	Administrative
Recruiting / Retention	Unit Storage (including Vault)
Physical Fitness	Locker Rooms

** For informational purposes only.*

Site information from the 2009 Maguire Group Report – Subject to verification.



FALL RIVER ARMORY *

577 Montaup St., Fall River, MA 02724

Unit(s) Assigned: A/1-101 FA Det, 215 BAND

Number of Buildings: 1
Square footage: 24,695 NSF / 33,416 GSF
Number of floors: 2
Year built: 1957

The Fall River Armory is located on an estimated 143,000 SF grass/pavement covered lot. The building is built into the hill side below the level of the adjoining garage. The building covers 23,288 SF with 66,751 SF of parking paved of which 50,904 is organizational and the remaining 15,847 being non-organizational. The property is surrounded by residential and commercial lots.

Built in 1957, the Fall River Armory is 60 years old. The structure is made up of a concrete foundation, and load bearing concrete block walls with brick veneer. The roof structure consists of glue laminated wood pitched roof beams supporting a wood deck, and a concrete panel deck over the remaining space. The two story building encloses 34,150 SF including a partial second floor.

Major Functions

Assembly Hall	Unit Storage (including Vault)
Classrooms	Special Functions
Library / Classroom	Music Library
Kitchen	Individual Instrument Storage
Toilets/Shower	Bulky Instrument Storage
Break Room	Individual Practice Rooms
Flam Mats. Storage (Locker)	
Recruiting / Retention	
Physical Fitness	
Administrative	

** For informational purposes only.*

Site information from the 2009 Maguire Group Report – Subject to verification.



FRAMINGHAM ARMORY *

522 Concord St., Framingham, MA 01701

Unit(s) Assigned: 151 RSG, 1060 TC

Number of Buildings: 2
Square footage: 26,351 NSF / 30,908 GSF
Number of floors: 2
Year built: 1959

The Framingham Armory is located on an 82,700 SF flat grass covered parcel of land. The building covers 20,600 SF with 197,314 SF of parking pavement of which 131,081 is organizational and the remaining 66,233 being non-organizational. The property is surrounded by commercial lots. There is an additional warehouse building on site with 7,716 SF of this building being used as unheated storage.

Built in 1959, the Framingham Armory is 58 years old. The structure is made up of a concrete foundation, and load bearing concrete walls with brick veneer. The roof structure consists of glue laminated wood pitched roof beams supporting a wood deck, and a concrete panel deck over the remaining space. The two story building encloses 23,300 SF including a partial basement.

Major Functions

Assembly Hall	NOTE: This facility contains a kitchen to which soldiers have been assigned as cooks.
Classrooms / Mess Hall	
Library / Classroom	
Kitchen	Physical Fitness
Toilets / Showers	Unit Storage (including Vault)
RAPIDS Office	Administrative

** For informational purposes only.
Site information from the 2009 Maguire Group Report – Subject to verification.*



GARDNER ARMORY *

Unit(s) Assigned: B/1-181 in(-)

Number of Buildings: 1
Square footage: 15,183 NSF / 18,376 GSF
Number of floors: 1
Year built: 1956

The Gardner Armory is located on a 94,100 SF flat grass covered lot with scattered trees. The building covers 19,500 SF with 30,480 SF of parking pavement all of which is non-organizational. The property is surrounded by residential and commercial lots.

Built in 1956, the Gardner Armory is 61 years old. The structure is made up of a concrete foundation, and load bearing concrete walls with brick veneer. The roof structure consists of steel bar joists supporting concrete panel decking.

Major Functions

Assembly Hall	Recruiting / Retention Office
Classrooms / Mess Hall	Physical Fitness
Kitchen	Administrative
Toilets / Showers	Unit Storage (including Vault)

** For informational purposes only.
Site information from the 2009 Maguire Group Report – Subject to verification.*



GREENFIELD ARMORY *

67 Hope St, Greenfield, MA 01301

Unit(s) Assigned: B/1-181 in Det 1

Number of Buildings: 1
Square footage: 22,720 NSF / 29,335 GSF
Number of floors: 3
Year built: 1910

The Greenfield Armory is built into the hillside with the land sloping up from the entry and pitches away from the building. The land is primarily grass covered. The building covers 14,700 SF with 2,000 SF of parking pavement. The property is surrounded by residential and commercial lots.

Built in 1910, the Greenfield Armory is 107 years old. The structure is made up of brick masonry pier and panel bearing wall construction, which supports heavy timber beam and joist wood flooring. The drill hall is spanned by steel trusses with wood purlins and roof planking. The building includes a full basement, drill hall and a two story administrative wing. The building encloses 33,400 SF.

Major Functions

Assembly Hall	
Classrooms	
Learning Center	
Kitchen and Pantry	
Toilets/Showers	
Recruiting / Retention	
Physical Fitness	
Administrative	
Unit Storage (including Vault)	
Locker Rooms (Men's only)	

** For informational purposes only.*

Site information from the 2009 Maguire Group Report – Subject to verification.



HANSCOM BUILDING HEADQUARTERS *

Building Headquarters (1505) and MedCom Drilling Units (1507)

2 Randolph Rd, Hanscom AFB, MA 01731

Unit(s) Assigned:

Number of Buildings: 2

Square footage: To be documented

Number of floors: “ “

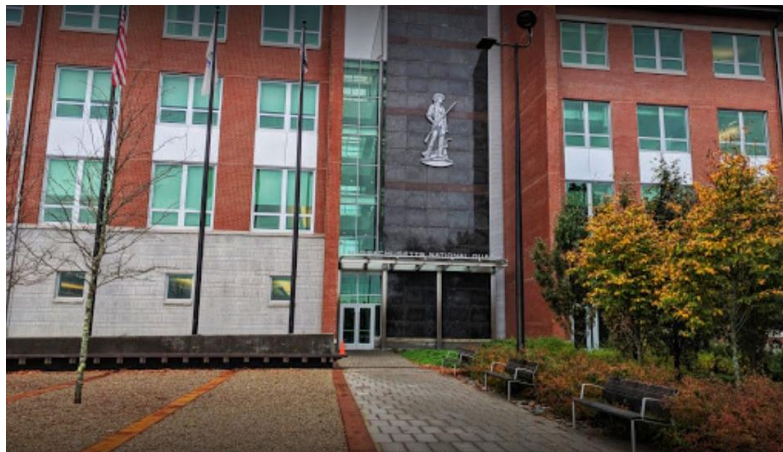
Year built: “ “

The Massachusetts Army National Guard utilizes two buildings at Hanscom Air Force Base. The first is the Massachusetts National Guard Joint Force Headquarters; the second building houses the MAARNG's Medical Command drilling units.

Major Functions

JOINT FORCE HQ	Medical Command Drilling Unit
- HQ Detachment	
- Recruiting and Retention	

** For informational purposes only.*



HINGHAM ARMORY *

96 Central St., Hingham, MA

Unit(s) Assigned: 1058 TC

Number of Buildings: 2

Square footage: 32,150 NSF / 40,037 GSF

Number of floors: 3

Year built: 1910

The Hingham Armory is located on a 47,000 SF lot that slopes down along the building from the entry and pitches away from the building. The land is primarily grass covered and surrounded by forested residential lots. The building covers 15,200 SF with 9,200 SF of pavement. There is also an unheated storage building on the property.

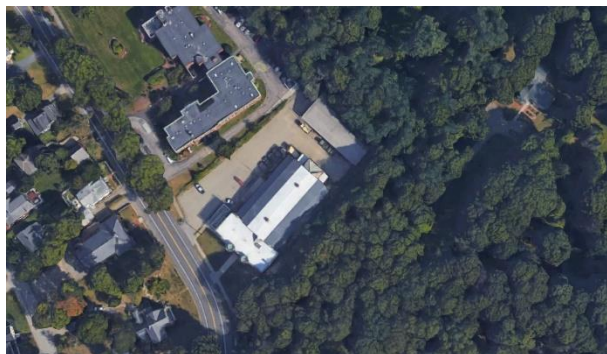
Built in 1910, the Hingham Armory is 107 years old. The structure is made up of brick masonry pier and panel bearing wall construction, which supports heavy timber beam and joist wood flooring. The drill hall is spanned by steel trusses with wood purlins and roof planking. The building encloses 33,800 SF including a full basement, storage, drill hall and a two story administrative wing.

Major Functions

Assembly	NOTE: This facility contains a kitchen to which soldiers have been assigned as cooks.
Classrooms	
Kitchen and Pantry	
Break Room	
Toilets/Showers	Administrative
Flam Mats. Storage (Locker)	Unit Storage (including Vault)
Physical Fitness	Locker Rooms (Men's only)

** For informational purposes only.*

Site information from the 2009 Maguire Group Report – Subject to verification.



LEOMINSTER ARMORY *

21 Oak St, Leominster, MA 01453

Unit(s) Assigned: 1181 FSC

Number of Buildings: 1
Square footage: 13,547 NSF / 16,243 GSF
Number of floors: 3
Year built: 1960

The Leominster Armory is located on a 98,400 SF grass covered lot that slopes across the length of the building. The building covers 16,600 SF with 23,163 SF of parking pavement, all of which is non-organizational. The property is surrounded by commercial lots and a highway.

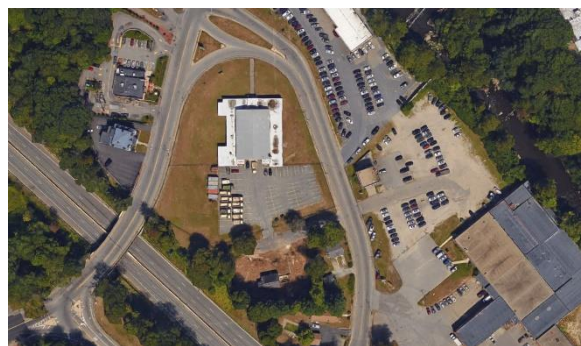
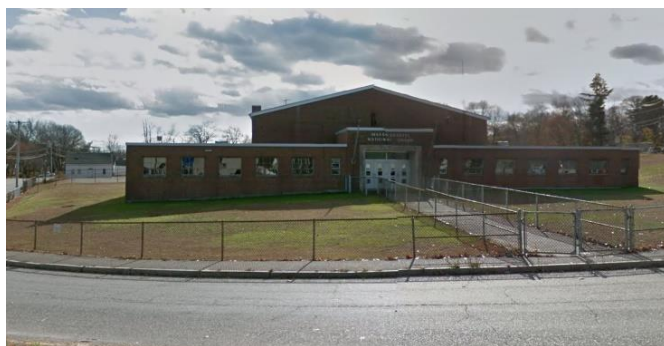
Built in 1960, the Leominster Armory is 57 years old. The structure is made up of a concrete foundation and load bearing concrete block walls with a brick veneer. The roof structure consists of glue laminated wood pitched roof beams supporting a wood deck, and a concrete panel deck over the remaining space.

Major Functions

Assembly	NOTE: This facility contains a kitchen to which soldiers have been assigned as cooks.
Classrooms / Mess Hall	
Kitchen	Administrative Space
Toilets / Showers	Unit Storage (including Vault)
Flam Mats. Storage (Locker)	
Family Readiness Office	
Recruiting / Retention	

** For informational purposes only.*

Site information from the 2009 Maguire Group Report – Subject to verification.



LEXINGTON ARMORY *

459 Bedford St., Lexington, MA 02173

Unit(s) Assigned: 211 MP

Number of Buildings: 1
Square footage: 26,862 NSF / 34,278 GSF
Number of floors: 2
Year built: 1964

The Lexington Armory is located on a 179,000 SF grass covered lot. The building is located at the crest of a small hillock. The building covers 17,300 SF with 25,500 SF of parking pavement, all of which is non-organizational. The property is surrounded by open forested lots and a highway.

Built in 1964, the Lexington Armory is 53 years old. The structure is made up of a concrete foundation, and load bearing concrete block walls with a brick veneer. The roof structure consists of glue laminated wood pitched roof beams supporting a wood deck, and a concrete panel deck over the remaining space. The one story building encloses 34,278 SF including a full basement.

Major Functions

Assembly Hall	Recruiting / Retention Office
Classroom / Mess Hall	Administrative Space
Kitchen	Unit Storage (including Vault)
Toilets/Showers	Locker Room Space
Flam Mats. Storage (Locker)	

** For informational purposes only.*

Site information from the 2009 Maguire Group Report – Subject to verification.



MELROSE ARMORY *

120 Main St., Melrose, MA 02176

Unit(s) Assigned: B/1-182 IN, HHC/1-182 IN

Number of Buildings: 1
Square footage: 20, 453 NSF / 27,345 GSF
Number of floors: 2
Year built: 1955

The Melrose Armory is located on a 130,200 SF flat grass lot. The building covers 17,063 SF with 75,062 SF of parking pavement. 69,034 SF of that parking is organizational while the remaining 6,028 SF is non-organizational. The property is surrounded by residential lots.

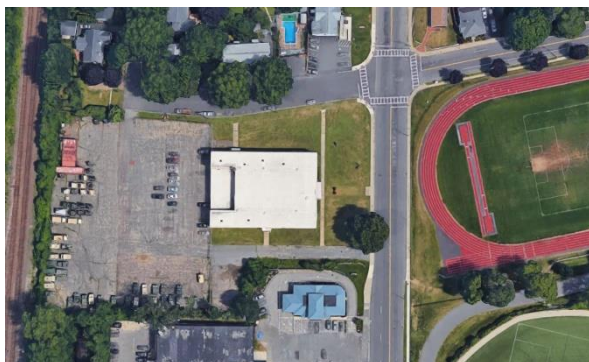
Built in 1955, the Melrose Armory is 65 years old. The structure is made up of a concrete foundation, and load bearing concrete block walls with a brick veneer. The roof structure consists of steel bar joists supporting a concrete panel deck. The two story building encloses 27,345 SF including a partial basement.

Major Functions

Assembly Hall	Flam Mats. Storage (Locker)
Classroom / Mess Hall	Family Readiness Office
Learning Center	Administrative Space
Kitchen	Unit Storage (including Vault)
Toilets / Showers	Locker Rooms (Men's only)

** For informational purposes only.*

Site information from the 2009 Maguire Group Report – Subject to verification.



METHUEN ARMORY *

679 Lowell RD, Methuen, MA 01844

Unit(s) Assigned: 101 EN HSC, 101 EN Det

Number of Buildings: 1

Square footage: 67,112 GSF

Number of floors: 2

Year built: 2010

The Methuen Armory is one of the Massachusetts Army National Guard's newer Readiness Centers. It was constructed on the same 5.5 acre parcel as the historic 104-year old Armory, (MAARNG) in order to provide updated facilities and to support multiple units as determined by MAARNG. The new facility provides additional program and space that is required to carry out the functions of a readiness center. Of particular importance is that the building and site were developed in accordance with the detailed MAARNG standards and guidelines for programmatic requirements, site jurisdiction and anti-terrorism regulations. The old facility will not be evaluated as part of this effort.

Major Functions

2-story Assembly Hall / Drill Shed	Locker Rooms / Showers
Classrooms	Administrative Space
Toilets/Showers	Vehicle Maintenance and Training Work Bay
Kitchen	
	NOTE: This facility contains a passenger elevator.

** For informational purposes only.*

Site information from the 2009 Maguire Group Report – Subject to verification



MIDDLEBORO ARMORY *

1 Elm St., Middleboro, MA 02346

Unit(s) Assigned: A/1-182 IN

Number of Buildings: 1

Square footage: 15,219 NSF / 18,376 GSF

Number of floors: 1

Year built: 1952

The Middleboro Armory is located on a 137, 884 SF flat grass covered lot. The building covers 18,376 SF with 32, 216 SF of parking pavement that is all organizational. The property is surrounded by residential lots and railroad.

Built in 1952, the Middleboro Armory is 65 years old. The structure is made up of concrete block walls with a brick veneer. The roof structure consists of steel bar joists supporting a concrete panel decking.

Major Functions

Assembly	Recruiting / Retention
Classrooms / Mess Hall	Physical Fitness
Kitchen	Administrative
Toilets/Showers	Unit Storage (including Vault)
Flam Mats. Storage (Locker)	

** For informational purposes only.*

Site information from the 2009 Maguire Group Report – Subject to verification.



NATICK READINESS CENTER *

149 Speen Street, Natick, MA 01760

Unit(s) Assigned: 26th MEB / 26th Signal Company**Number of Buildings: 2****Square footage: 46,450 GSF****Number of floors: 2****Year built: 2014**

The new Massachusetts Readiness Center in Natick is located on a 26 acre state-owned parcel located at 149 Speen Street. The Center provides a training center for and serves the peacetime missions of the 182nd Area Support Medical Company and the 26th Maneuver Enhanced Brigade units of the Massachusetts Army National Guard (MAARNG).

The new Readiness Center consists of a 2-story assembly hall in a two-level arrangement that locates spaces requiring public access on the first level and the other spaces, i.e., offices, classrooms and the Command Suite on the second level. Energy conserving features designed to accommodate the Readiness Center's unique monthly cycle were incorporated into the design for a LEED Plus Silver rating. Site design met all required federal security and Force Protection standards. The site work included storm water management systems. The other building is used as state cold storage facility.

Major Functions

2-story Assembly Hall / Drill Shed	NOTE: This facility has a passenger elevator.
Classrooms	
Toilets/Showers	
Kitchen	
2-story Assembly Hall / Drill Shed	
Locker Rooms / Showers	
Administrative Space	



NEWBURYPORT ARMORY *

57 Low St, Newburyport, MA 01950

Unit(s) Assigned: 182EN(-)

Number of Buildings: 2
Square footage: 14,879 NSF / 18,376 GSF
Number of floors: 1
Year built: 1954

The Newburyport Armory is located on a 827,640 SF flat grass covered lot. The building covers 18,025 SF with 44,575 SF of parking pavement that is all non-organizational. The property is surrounded by open marsh land and an adjoining garage facility.

Built in 1954, the Newburyport Armory is 63 years old. The structure is made up of concrete block walls with a brick veneer. The roof structure consists of steel bar joists supporting a concrete panel decking.

Major Functions

Assembly Hall	Toilets/Showers
Classroom / Mess Hall	Administrative
Kitchen	Unit Storage (including Vault)

** For informational purposes only.*

Site information from the 2009 Maguire Group Report – Subject to verification.



NORTHAMPTON (FLORENCE) ARMORY*

Col. Lavalle Lane, Northampton, MA 01060

Unit(s) Assigned: 183 EN Det1

Number of Buildings: 1
Square footage: 12,541 NSF / 14,890 GSF
Number of floors: 1
Year built: 1969

The Northampton Armory is located on a 296,500 SF flat grass-covered lot. The building covers 15,200 SF with 27,400 SF of parking pavement that is all organizational. The property is surrounded by open forested lots.

Built in 1969, the Northampton Armory is 48 years old. The structure is made up of concrete block walls with a brick veneer. The roof structure consists of glue laminated wood pitched roof beams supporting a wood deck, and a concrete panel deck over the remaining space.

Major Functions

Assembly Hall	Flam Mats. Storage (Locker)
Classrooms / Mess Hall	Recruiting / Retention
Learning Center	Administrative Space
Kitchen and Pantry	Unit Storage (including Vault)
Toilets / Showers (Men's showers only)	

** For informational purposes only.*

Site information from the 2009 Maguire Group Report – Subject to verification.



NORTHBRIDGE (WHITINSVILLE) ARMORY *

50 Lake St., Northbridge, MA 01588

Unit(s) Assigned: 101 EN FSC

Number of Buildings: 2

Square footage: 17,354 NSF / 20,315 GSF

Number of floors: 1

Year built: 1959

The Northbridge Armory is located on a 88,700 SF flat grass covered lot. The building covers 15,913 SF with 44,575 SF of parking pavement of which 44,574 SF is organizational and the remaining 14,425 SF is non organizational. The property is surrounded by open forested lots and commercial property. There is also a garage facility on site, 4,402 SF of which the unit uses as cold storage.

Built in 1959, the Northbridge Armory is 58 years old. The structure is made up of concrete foundation and load bearing concrete block walls with brick veneer. The roof structure consists of glue laminated wood pitched roof beams supporting a wood deck, and a concrete panel deck over the remaining space.

Major Functions

Assembly Hall	Recruiting / Retention
Classrooms/ Mess Hall	Physical Fitness
Kitchen	Administrative Space
Toilets / Showers	Unit Storage (including Vault)
Flam Mats. Storage (Locker)	

** For informational purposes only.*

Site information from the 2009 Maguire Group Report – Subject to verification.



PITTSFIELD ARMORY *

171 Vin Hebert Blvd, Pittsfield, MA 01201

Unit(s) Assigned: 379 EN (Det), 747 MP Det 1

Number of Buildings: 3

Square footage: 15,323 NSF / 19,500 GSF (*Armory Building*)

Number of floors: 1

Year built: 1958

The Pittsfield Armory is located on a 215,000 SF grass/pavement covered lot. The land slopes down to the entry and beyond. The building covers 19,500 SF with 14,257 SF of parking pavement of which 14,257 SF is organizational and the remaining 14,724 SF is non organizational. The property is surrounded by commercial and residential lots. There is also a garage facility and a storage building on site.

Built in 1958, the Pittsfield Armory is 59 years old. The structure is made up of concrete foundation and load bearing concrete block walls with brick veneer. The roof structure consists of glue laminated wood pitched roof beams supporting a wood deck, and a concrete panel deck over the remaining space.

Major Functions

Assembly Hall	Flam Mats. Storage (Locker)
Classrooms / Mess Hall	Family Readiness Office
Learning Center	Physical Fitness
Training Aid Storage	Administrative Space
Kitchen	Unit Storage (including Vault)
Toilets / Showers	Locker Rooms (Men's only)

** For informational purposes only.*

Site information from the 2009 Maguire Group Report – Subject to verification.



QUINCY ARMORY *

994 Hancock St., Quincy, MA 02169

Unit(s) Assigned: G 186 BSB

Number of Buildings: 2
Square footage: 20, 397 NSF / 30,000 GSF (*Armory Building*)
Number of floors: 3
Year built: 1924

The Quincy Armory is built on an estimated 80,000 SF lot with the land sloping up from the entry and pitches away from the building. The land is primarily grass covered. The building covers 13,228 SF with 62,751 SF of parking pavement of which 50,638 is organizational and the other 12,113 is non-organizational. The property is surrounded by residential school lots. There is also a former garage on the site which is being used as a storage building.

Built in 1924, the Quincy Armory is 93 years old. The structure is made up of brick masonry pier and panel bearing wall construction, which supports heavy timber beam and joist wood purlins and roof planking. The building encloses 30,000 SF including a full basement, assembly hall and a two story wing. The entire 3,287 SF on the second floor is occupied by the State Police.

Major Functions

Assembly Hall	Recruiting ./ Retention Office
Classrooms / Mess Hall	Physical Fitness (part of Assembly Hall)
Kitchen	Administrative Space
Toilets / Shower	Unit Storage (including Vault)
Flam Mats. Storage (Locker)	Locker Room Space

** For informational purposes only.*

Site information from the 2009 Maguire Group Report – Subject to verification.



READING ARMORY *

25 Haverhill St, Reading, MA 01867

Unit(s) Assigned: 26 MEB, 272 Chem, 188 EN, 972 MP

Number of Buildings: 1

Square footage: 64,400 NSF / 72,141 GSF

Number of floors: 2

Year built: 1973

The Reading Armory is located on a flat grass covered lot that is situated on a large MA-ARNG facility. The building covers 72,141 SF with 80,000 SF of parking pavement. The property is surrounded by open forest lots.

Built in 1973, the Reading Armory is 44 years old. The structure is made up of concrete foundation, and load bearing concrete block walls with a brick veneer. The roof structure consists of steel bar joists supporting a concrete panel deck. The building is two stories and encloses 39,600 SF. There are nine additional buildings located on the site. One of the buildings houses the CERF-P unite while the others are used for heated and non-heated storage.

Major Functions

Assembly Hall	Family Readiness Office
Classrooms / Mess Hall	RAPIDS Office
Distance Learning Center	Recruiting / Retention Office
Kitchen	Administrative Space
Break Room	Unit Storage (including Vault)
Toilets / Showers	
	NOTE: This facility contains a kitchen to which soldiers have been assigned as cooks.

** For informational purposes only.*

Site information from the 2009 Maguire Group Report – Subject to verification.



REHOBOTH ARMORY *

13 Fire Tower Road, Rehoboth, MA 02769

Unit(s) Assigned: 79 TC, 125th QTRMSTR

Number of Buildings: 7

Square footage: 32,434 NSF / 42,342 GSF

Number of floors: 1

Year built: 1956

The Rehoboth Armory site slopes up from front to back and is grass-covered with 173,177 square feet of parking pavement, all of which organizational. The seven buildings occupied by the guard cover 42,127 square feet and are surrounded by open and residential lots. The structures are of concrete foundations, with concrete masonry load bearing walls. The roof structures are of wood joists supporting wood decking.

Major Functions

Classrooms	Flammable Materials Storage
Mess Hall	Physical Fitness
Library / Classroom	Administrative Space
Distance Learning Center	Unit Storage (including Vault)
Break Room	Heated and Unheated Storage
Toilets / Showers	NOTE: This facility contains a kitchen to which soldiers have been assigned as cooks.

** For informational purposes only.*

BUILDING No. Function

SF

C-1	Administrative Facility	6,597 SF
C-2	Administrative Facility	2,433 SF
C-3	Dining Facility	4,143 SF
C-4	Water Supply Treatment Building	329 SF
C-12	Administrative Facility	8,163 SF
C-13	Administrative Facility	11,859 SF
L-0002	Unheated Storage Building	5,000 SF (built in 2000)



SPRINGFIELD ARMORY *

1475 Roosevelt Ave., Springfield, MA 01109

Unit(s) Assigned: 126 BSB (HQ), C/1-120 SF

Number of Buildings: 2

Square footage: 31,359 NSF / 41,520 GSF (*Armory Building*)

Number of floors: 2

Year built: 1984

The Springfield Armory is located on a 138,775 SF flat covered lot. The building covers 41,520 SF with 138,775 SF of parking pavement of which 47,005 is organizational and the remaining 91,771 SF being non-organizational. The property is surrounded by residential and commercial lots. There is also a storage facility on site.

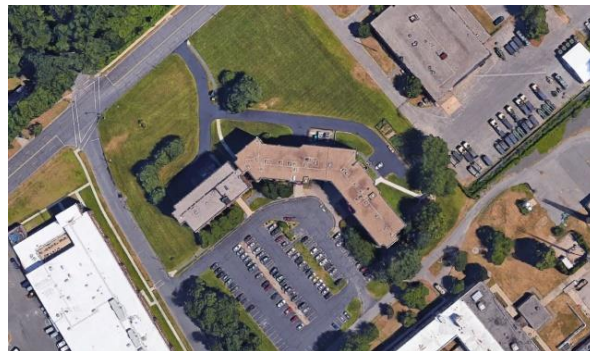
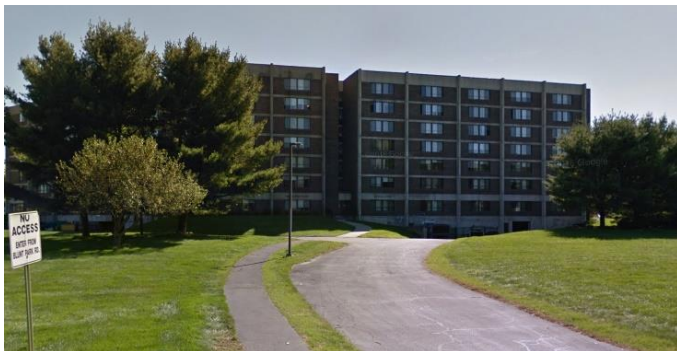
Built in 1984, the Springfield Armory is 33 years old. The structure is made up of concrete foundation, and load bearing concrete block walls with a brick veneer. The roof structure consists of steel bar joists supporting a concrete panel deck. The building is two stories and encloses 41,520 SF.

Major Functions

Assembly Hall	Flammable Materials Storage (lockers)
Classrooms / Mess Hall	Family Readiness Office
Library / Classroom	Physical Fitness
Distance Learning Center	Administrative Space
Kitchen	Unit Storage (including Vault)
Toilets / Showers	Locker Room Space
	NOTE: This facility contains a kitchen to which soldiers have been assigned as cooks.

** For informational purposes only.*

Site information from the 2009 Maguire Group Report – Subject to verification.



TAUNTON ARMORY *

111 Hon. Gordon M. Owen, Taunton, MA 02780

Unit(s) Assigned: 772 MP

Number of Buildings: 1
Square footage: 24,897 NSF / 32,614 GSF
Number of floors: Unknown
Year built: 1992

The Taunton Armory is located on a 158,464 SF flat covered lot. The building covers 32,614 SF with 158,464 SF of parking pavement of which 68,031 is organizational and the remaining 90,433 SF being non-organizational. The property is surrounded by open and commercial lots.

Built in 1992, the Taunton Armory is 25 years old. The structure is made up of concrete foundation, and load bearing concrete block walls with a brick veneer. The roof structure consists of steel bar joists supporting a concrete panel deck. The building is two stories and encloses 32,614 SF.

Major Functions

Assembly Hall	Recruiting / Retention Office
Classrooms	Toilets/Showers
Library	Administrative Space
Training Aid Storage	Unit Storage (including Vault)
Family Readiness Office	Locker Rooms
Kitchen	
	NOTE: This facility contains a kitchen to which soldiers have been assigned as cooks.

** For informational purposes only.*

Site information from the 2009 Maguire Group Report – Subject to verification.



WARE ARMORY *

233 West St. Ware, MA 01082

Unit(s) Assigned: 747 MP (-)

Number of Buildings: 1
Square footage: 15,240 NSF / 18,376 GSF
Number of floors: 1
Year built: 1957

The Ware Armory is located on a 151,320 SF flat covered lot that slopes up from the street across the length of the building. The building covers 18,447 SF with 38,042 SF of parking pavement that are all organizational. The property is surrounded by residential and school lots.

Built in 1957, the Ware Armory is 60 years old. The structure is made up of concrete foundation, and load bearing concrete block walls with a brick veneer. The roof structure consists of steel bar joists supporting a concrete panel deck.

Major Functions

Assembly Hall	Flammable Materials Storage
Classroom / Mess Hall	Recruiting / Retention
Kitchen	Administrative Space
Toilets/Shower	Unit Storage (including Vault)

** For informational purposes only.
Site information from the 2009 Maguire Group Report – Subject to verification.*



WELLESLEY ARMORY *

14 Minuteman Lane, Wellesley, MA 02481

Unit(s) Assigned: 51 TC, IO

Number of Buildings: 2

Square footage: 34,512 / 43,037 GSF (*Armory Building*)

Number of floors: 1

Year built: Unknown

The Wellesley Armory is located on a 92,322 SF flat covered lot. The building covers 43,037 SF with 92,322 SF of parking pavement that is all organizational. The property is surrounded by residential lots. There is also an adjacent storage building.

The age and construction date of the Wellesley Armory is unknown. The structure is made up of concrete foundation, and load bearing concrete block walls with a brick veneer. The roof structure consists of steel bar joists supporting a concrete panel deck.

Major Functions

Classrooms / Mess Hall	Unit Storage (heated) and Vault
Distance Learning Center	Locker Rooms
Kitchen / Break Room	Training Aid Storage
Toilets / Showers	Flammable Materials Storage
Family Readiness Office	Ready Bays
Recruiting / Retention Office	Operations Center
Physical Fitness	
Administrative	

** For informational purposes only.*

Site information from the 2009 Maguire Group Report – Subject to verification.



WEST NEWTON ARMORY *

1137 Washington St., West Newton, MA 02165

Unit(s) Assigned: 65 PAO, 101 Finance

Number of Buildings: 1

Square footage: 26,877 / 33,455 GSF

Number of floors: 3

Year built: 1912

The West Newton Armory is located on a 36,400 SF flat pavement covered lot that pitches away from the building. The building covers 14,759 SF with 13,354 SF of parking pavement that is all organizational. The property is surrounded by residential and commercial lots.

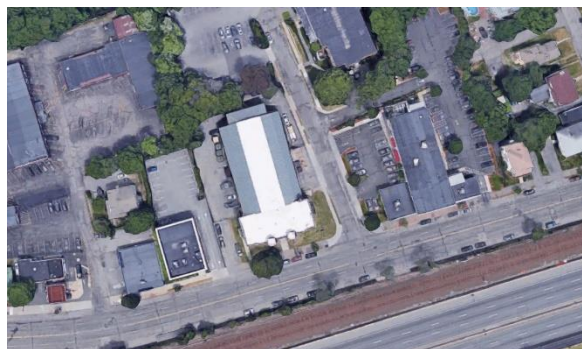
Built in 1912, the West Newton Armory is 105 years old. The structure is made up of brick masonry pier and panel bearing wall construction, which supports heavy timber beam and joist wood flooring. The assembly hall is spanned by steel trusses with wood purlins and roof planking. The building encloses 33,455 SF including a full basement, assembly hall and a two story administrative wing.

Major Functions

Assembly Hall	Physical Fitness
Classrooms / Mess Hall	Administrative Space
Kitchen	Unit Storage (including Vault)
Toilets/Showers	Locker Room Space
Recruiting / Retention	

** For informational purposes only.*

Site information from the 2009 Maguire Group Report – Subject to verification.



WESTFIELD ARMORY *

137 Franklin St, Westfield, MA 01085

Unit(s) Assigned: 126 BSB (B)

Number of Buildings: 1
Square footage: 25,692 NSF / 32,212 GSF
Number of floors: 3
Year built: 1933

The Westfield Armory is located on an estimated 280, 00 SF flat lot that slopes down from the entry of the building to the rear of the site. The building covers 14,700 SF with 158,433 SF of parking pavement of which 149,720 is organizational and 8,713 is not. The property is surrounded by residential and commercial lots.

Built in 1933, the Westfield Armory is 84 years old. The structure is made up of brick masonry pier and panel bearing wall construction, which supports heavy timber beam and joist wood flooring. The assembly hall is spanned by steel trusses with wood purlins and roof planking. The building encloses 32,212 SF including a full basement, assembly hall and a two story administrative wing. There is also a garage building and a repair shop that is not controlled by MARNG on the site.

Major Functions

Assembly Hall	Toilets / Showers
Classrooms / Mess Hall	Flammable Materials Storage (locker)
Library / Classroom	Administrative Space
Learning Center	Unit Storage (including Vault)
Kitchen	

** For informational purposes only.
Site information from the 2009 Maguire Group Report – Subject to verification.*



WESTFIELD READINESS SUPPORT FACILITY at Barnes Army National Guard Base *

175 Falcon Drive Westfield, MA 01085

Unit(s) Assigned: N/A

Number of Buildings: 1

Square footage: To be documented

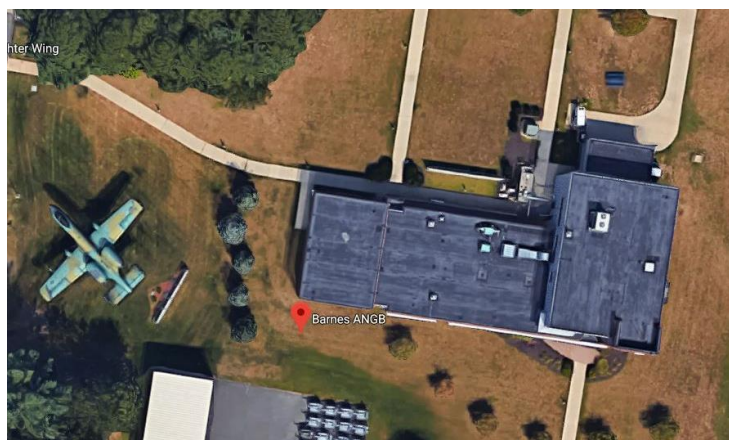
Number of floors: “ “

Year built: “ “

Major Functions

** For informational purposes only.*

Site information from the 2009 Maguire Group Report – Subject to verification.



WORCESTER – LINCOLN ST. ARMORY *

701 Lincoln St., Worcester, MA 01605

Unit(s) Assigned: 125 QM, 1166 TC

Number of Buildings: 2

Square footage: 22,897 NSF / 28,155 GSF (*Armory Building*)

Number of floors: 1

Year built: 1963

The Worcester – Lincoln St. Armory is located on an estimated 193,000 SF flat grass covered lot. The building covers 27,155 SF with 158,433 SF of parking pavement of which 33,368 SF is organizational and the remaining 66,785 is not. The property is surrounded by residential and open lots. There is also a storage building on site.

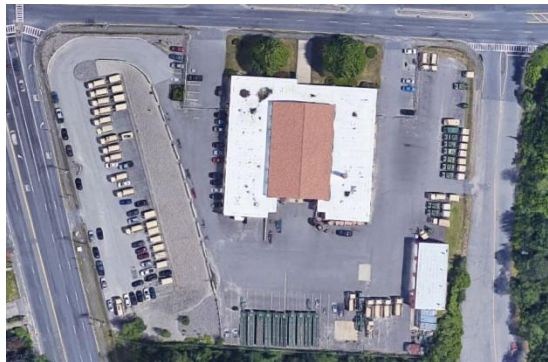
Built in 1963, the Worcester Armory is 54 years old. The structure is made up of concrete foundation, and load bearing concrete block walls with a brick veneer. The roof structure consists of glue laminated wood pitched roof beams supporting a wooden deck. A concrete panel deck is over the remaining space.

Major Functions

Assembly Hall	Flammable Materials Storage (locker)
Classrooms / Mess Hall	Recruiting / Retention Office
Kitchen	Administrative Space
Toilets / Showers	Unit Storage (including Vault)
	NOTE: This facility contains a kitchen to which soldiers have been assigned as cooks.

** For informational purposes only.*

Site information from the 2009 Maguire Group Report – Subject to verification.



WORCESTER PLANTATION ST. ARMORY *

Plantation St., Worcester, MA 01605

Unit(s) Assigned: 1-181st Infantry Regiment

Number of Buildings: 2

Square footage: 38,836 SF / (*Armory Building*)

Number of floors: 2 (*Armory Building*)

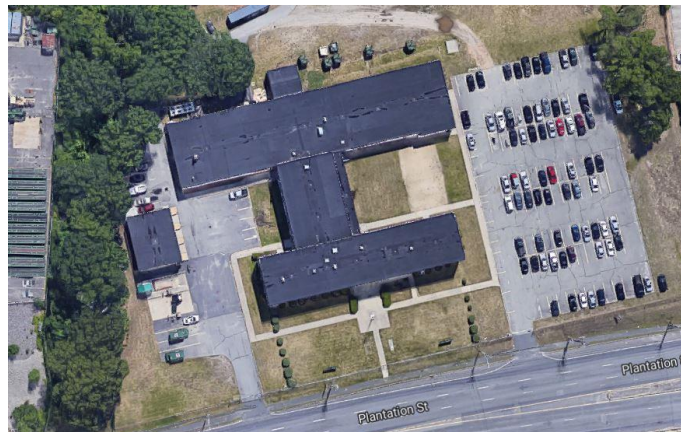
Year built: unknown

The Worcester – Plantation St. Armory is located adjacent to the Lincoln Street Armory. There is also a one-level Vehicle Maintenance Garage (1,886 SF) on site.

Major Functions

** For informational purposes only.*

Site information from the 2009 Maguire Group Report – Subject to verification.



SUMMARY LISTING OF FACILITY BY LOCATION

Number	Town	Facility Type
1	Agawam	Amory
2	Ayer	Amory
3	Bourne	Amory
4	Bourne	- unheated storage bldg. (ancillary)
5	Braintree	Amory
6	Bridgewater	Amory
7	Brockton	Amory
8	Cambridge	Amory
9	Cambridge	- storage building (ancillary)
10	Chicopee	Amory
11	Danvers	Amory
12	Dorchester	Amory
13	Fall River	Amory
14	Florence (Northampton)	Amory
15	Framingham	Amory
16	Framingham	- storage building (ancillary)
17	Gardner	Amory
18	Greenfield	Amory
19	Hingham	Amory
20	Hingham	- unheated storage bldg. (ancillary)
21	Leominster	Amory
22	Lexington	Amory
23	Melrose	Amory
24	Methuen	Amory
25	Middleboro	Amory
26	Natick	Amory
27	Natick	- unheated storage bldg. (ancillary)
28	Newburyport	Amory
29	Pittsfield	Amory
30	Pittsfield	- maintenance shop (ancillary)
31	Pittsfield	- storage building (ancillary)
32	Quincy	Amory
33	Quincy	- storage building (ancillary)
34	Reading	Amory
35	Rehoboth	C-1 – Admin Facility
36	Rehoboth	C-2 – Admin Facility
37	Rehoboth	C-3 – Dining Facility
38	Rehoboth	C-4 – Water Supply Treatment
39	Rehoboth	C-12 – Admin Facility
40	Rehoboth	C-13 – Admin Facility
41	Rehoboth	L-0002 – unheated storage (ancillary)

42	Springfield	Amory
43	Springfield	- storage building (ancillary)
44	Taunton	Amory
45	Ware	Amory
46	Wellesley	Amory
47	Wellesley	- storage building (ancillary)
48	West Newton	Amory
49	Westfield – Franklin St.	Amory
50	Westfield – Barnes ANGG	Readiness Support Facility
51	Whitinsville (Northampton)	Amory
52	Whitinsville (Northampton)	- storage building (ancillary)
53	Worcester – Lincoln Street	Amory
54	Worcester – Lincoln Street	- storage building (ancillary)
55	Worcester – Plantation St.	Amory
56	Worcester – Plantation St.	- storage building (ancillary)
57	Hanscom	Bldg. 1505 - Joint Force HQ
58	Hanscom	Bldg. 1507 - Medical Command
59	Camp Edwards	Bldg. 2814 – Aviation Armory
60	Camp Edwards	Bldg. 2822 – Aviation Armory
61	Camp Edwards	Bldg. 3132 – Firefighting Unit
62	Camp Edwards	Bldg. 102 – Training Site HQ/Cyber
63	Camp Edwards	Bldg. 2808 – Armory
64	Camp Edwards	Bldg. 3134 – EOD Armory

TOTALS

50 Armories/Readiness Buildings

14 Ancillary Buildings (13 Storage / 1 Shop)