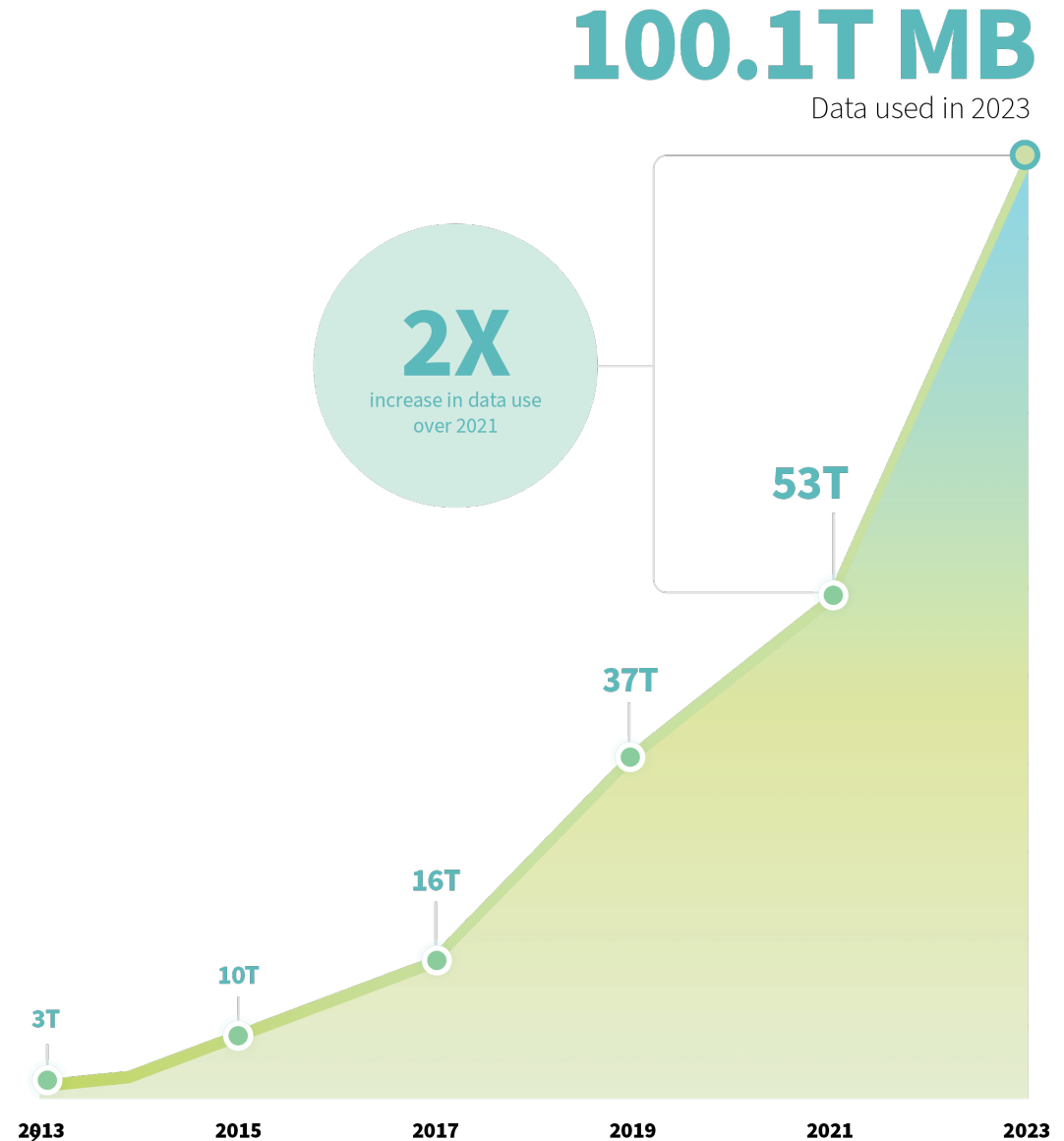


Pole Attachments and Wireless Broadband Deployment

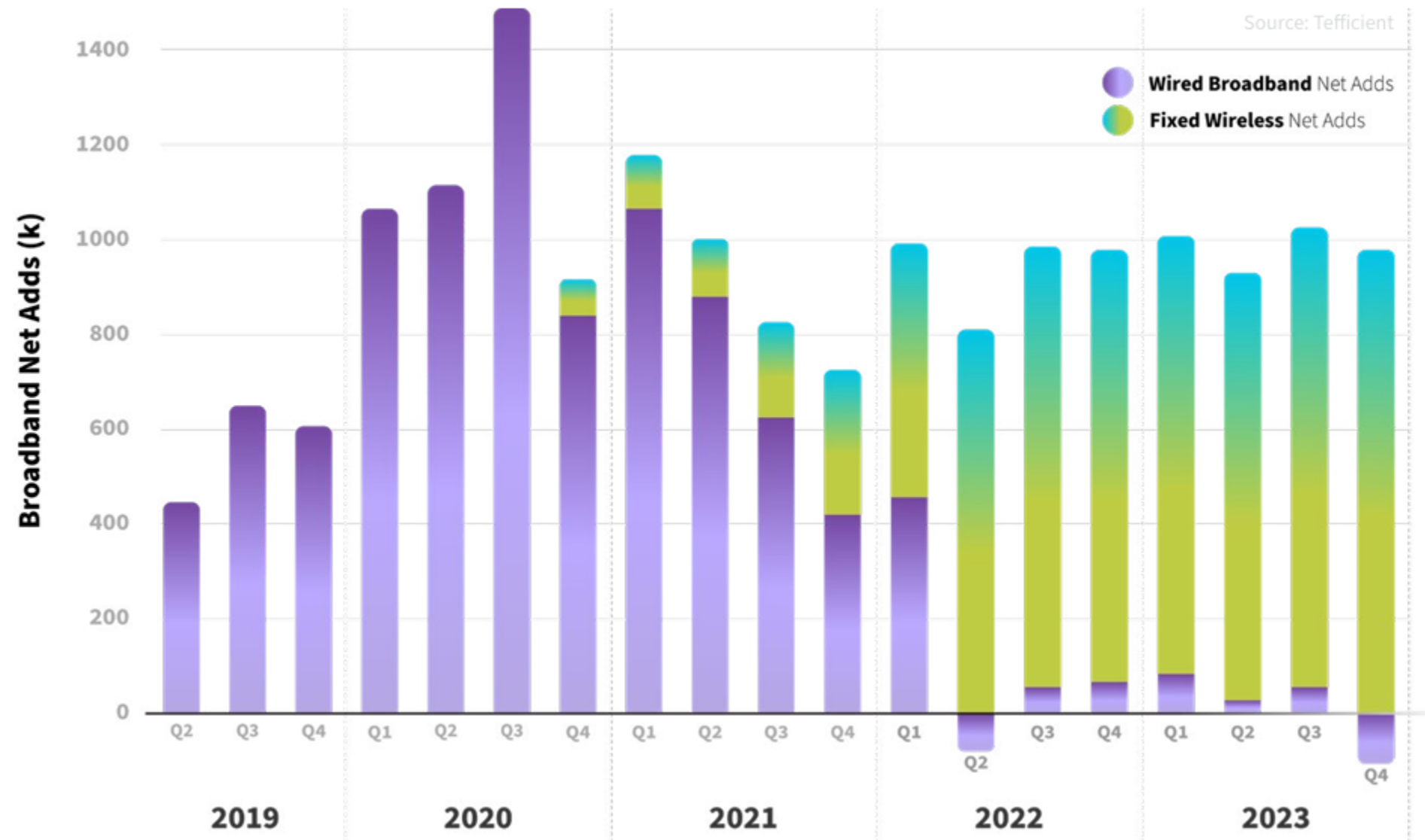
June 23, 2025

Consumer Demand for Wireless Continues to Skyrocket

- Mobile wireless data traffic has grown 258x since 2010
- There are more mobile connections (558M) than Americans
- Ericsson estimates data usage to increase by 300% between now and 2029



5G Home Broadband is Bridging the Digital Divide



The Wireless Industry Invests to Meet Consumer Demands

- Industry capital investment exceeded \$30 billion in 2025
- Cumulative investment to date is \$705 billion
 - \$215 billion in 5G networks so far

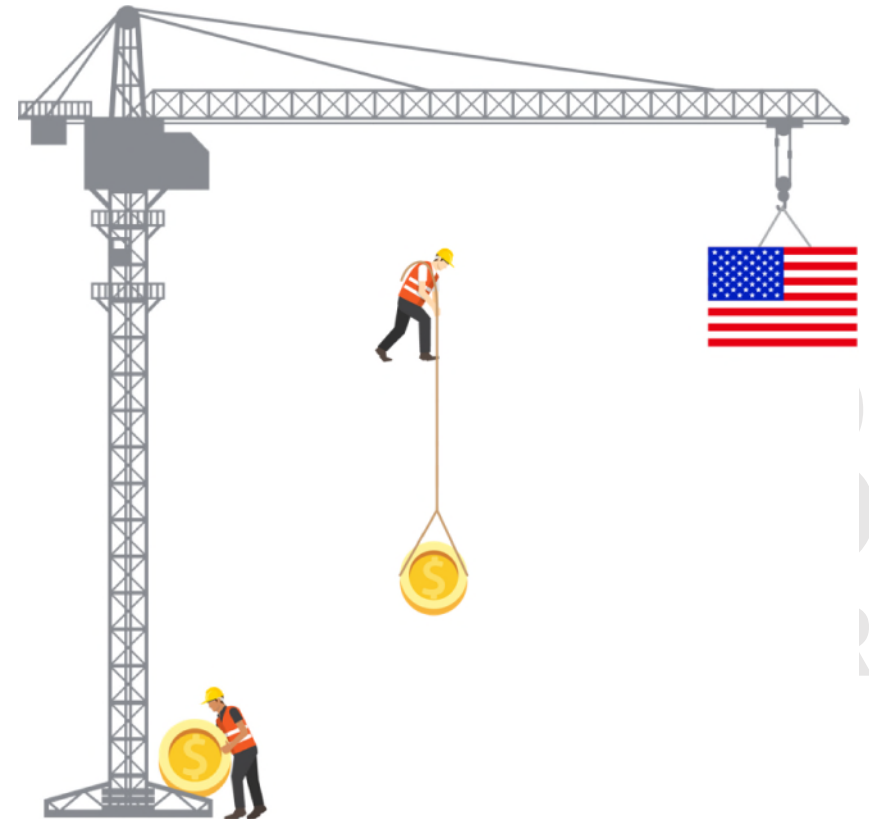
5G Deployments Require Multiple Years of Significant Investment

+\$215B

invested since 2016

\$275B

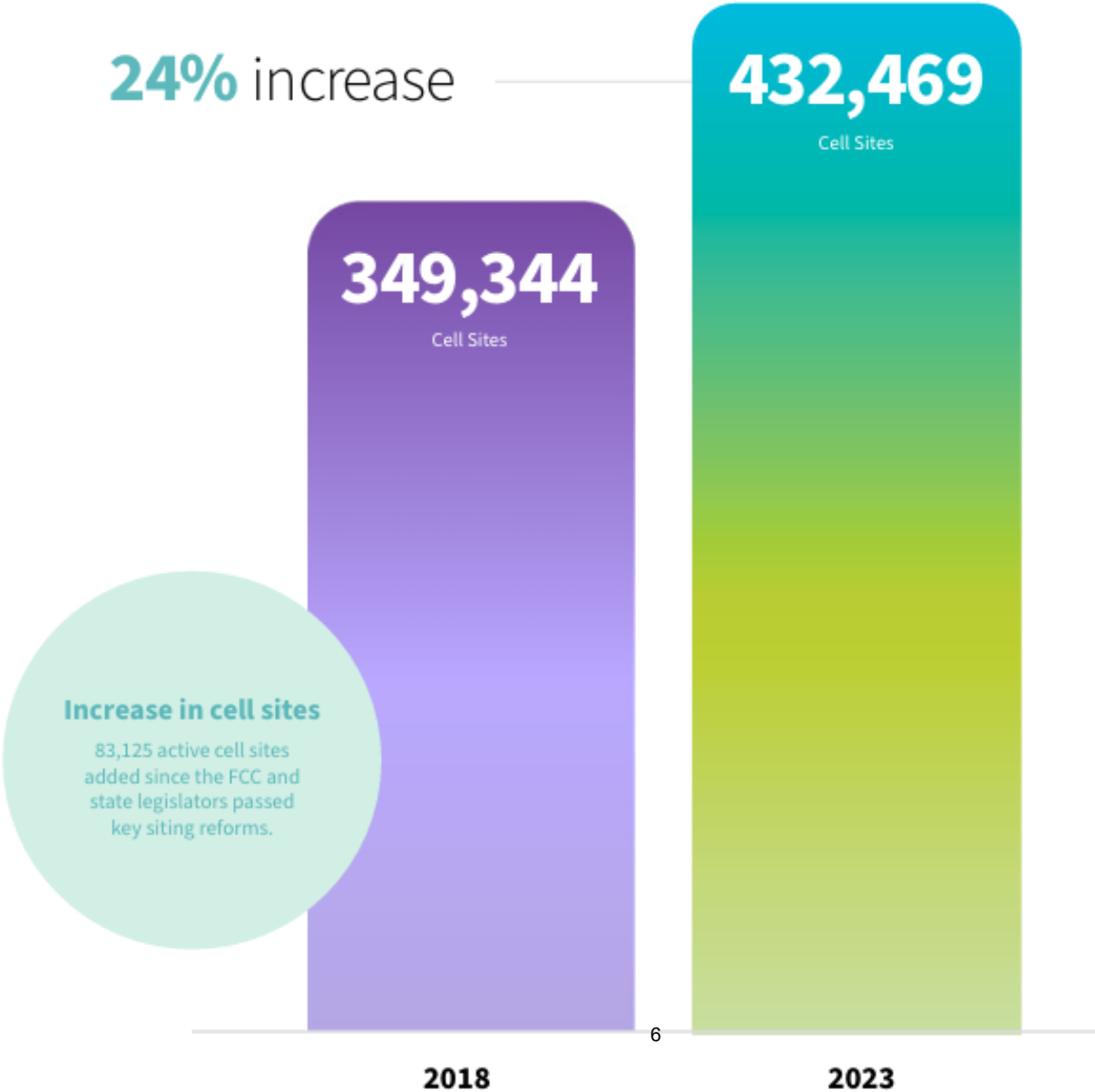
projected investment to deploy 5G



Siting Delays are a Major Obstacle to Timely Broadband Deployment



FCC and State Siting Reforms Have Proven Successful



Proposed Priorities for Massachusetts Pole Attachment Processes

1 “Shot clock” timelines for make-ready

2 OTMR and attacher self-help provisions

3 Accelerate dispute resolution

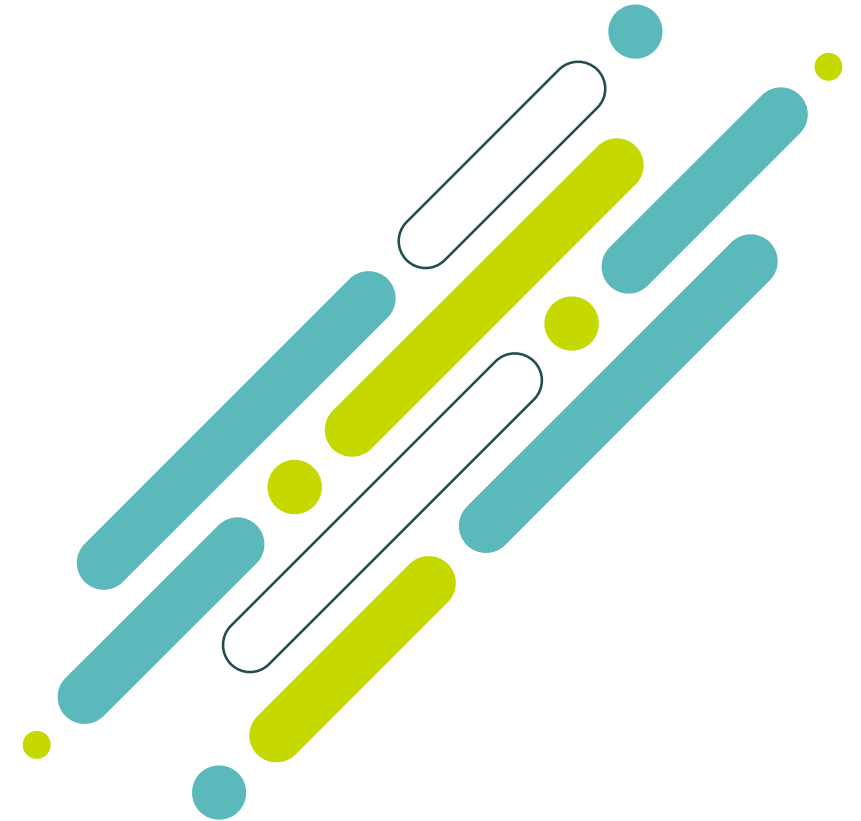
4 Guarantee pole-top access

Contact Information

Matt DeTura

Counsel, External and State Affairs

mdetura@ctia.org



ctia®

The logo for ctia (California Trade Industry Association) is displayed in white on a teal background. The text 'ctia' is in a lowercase, sans-serif font. A registered trademark symbol (®) is located to the upper right of the 'a'. Below the text, there are seven white dots arranged in a horizontal line, each centered under a letter of the word 'ctia'.