



Massachusetts Department of Environmental Protection  
Source Water Assessment and Protection (SWAP) Report  
for

## Duxbury Water Department

### What is SWAP?

The Source Water Assessment and Protection (SWAP) program, established under the federal Safe Drinking Water Act, requires every state to:

- inventory land uses within the recharge areas of all public water supply sources;
- assess the susceptibility of drinking water sources to contamination from these land uses; and
- publicize the results to provide support for improved protection.

### Susceptibility and Water Quality

Susceptibility is a measure of a water supply's potential to become contaminated due to land uses and activities within its recharge area.

A source's susceptibility to contamination does *not* imply poor water quality.

Water suppliers protect drinking water by monitoring for more than 100 chemicals, disinfecting, filtering, or treating water supplies, and using source protection measures to ensure that safe water is delivered to the tap.

Actual water quality is best reflected by the results of regular water tests. To learn more about your water quality, refer to your water supplier's annual Consumer Confidence Reports.

**Table 1: Public Water System Information**

<i>PWS Name</i>	Duxbury Water Department
<i>PWS Address</i>	878 Tremont Street
<i>City/Town</i>	Duxbury, MA 02332
<i>PWS ID Number</i>	4082000
<i>Local Contact</i>	Carl Hillstrom
<i>Phone Number</i>	(781) 934-1103

### Introduction

We are all concerned about the quality of the water we drink. Drinking water wells may be threatened by many potential contaminant sources, including storm runoff, road salting, and improper disposal of hazardous materials. Citizens and local officials can work together to better protect these drinking water sources.

#### Purpose of this report:

This report is a planning tool to support local and state efforts to improve water supply protection. By identifying land uses within water supply protection areas that may be potential sources of contamination, the assessment helps focus protection efforts on appropriate Best Management Practices (BMPs) and drinking water source protection measures.

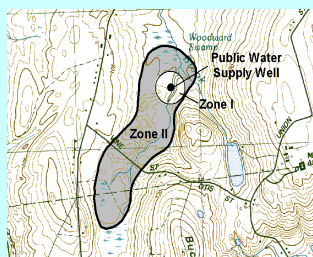
Refer to Table 3 for Recommendations to address potential sources of contamination. Department of Environmental Protection (DEP) staff are available to provide information about funding and other resources that may be available to your community.

#### This report includes the following sections:

1. Description of the Water System
2. Land Uses within Protection Areas
3. Source Water Protection Conclusions and Recommendations
4. Appendices

### What is a Protection Area?

A well's water supply protection area is the land around the well where protection activities should be focused. Each well has a Zone I protective radius and a Zone II protection area.



### Glossary

**Aquifer:** An underground water-bearing layer of permeable material that will yield water in a usable quantity to a well.

**Hydrogeologic Barrier:** An underground layer of impermeable material (i.e. clay) that resists penetration by water.

**Recharge Area:** The surface area that contributes water to a well.

**Zone I:** The area closest to a well; a 100 to 400 foot radius proportional to the well's pumping rate. This area should be owned or controlled by the water supplier and limited to water supply activities.

**Zone II:** The primary recharge area for the aquifer. This area is defined by hydrogeologic studies that must be approved by DEP. Refer to the attached map to determine the land within your Zone II.

## Section 1: Description of the Water System

**Zone II#:** 133

**Susceptibility:** High

Well Names	Source IDs
Mayflower St. Well	4082000-09G
Mayflower St. Well #2	4082000-10G

**Zone II #:** 146

**Susceptibility:** High

Well Names	Source IDs
Millbrook Pond Well	4082000-01G
Partridge Rd GP Well	4082000-02G
Depot St. GP Well	4082000-03G
Lakeshore Dr. Well	4082000-04G
Tremont Well #1	4082000-05G
Tremont Well #2	4082000-06G
Evergreen Well #1	4082000-07G
Evergreen Well #2	4082000-08G

The wells for the Duxbury Water Department are located in two Zone IIs. Both Zone IIs are almost entirely within the Town of Duxbury, with a very small portion of Zone II # 146 extending in to the Town of Pembroke. Each of the wells has a Zone I of 400 feet. The wells are located in an aquifer with a high vulnerability to contamination due to the absence of hydrogeologic barriers (i.e. clay) that can prevent contaminant migration. Please refer to the attached map to view the boundaries of the Zone I and Zone II.

Water from all of the wells is pH adjusted for corrosion control and fluoridated for dental health. Well 01G, 03G, 05G, and 06G are also treated for iron removal, Well 07G is treated for manganese removal. For current information on monitoring results and treatment, please contact the Public Water System contact person listed above in Table 1 for a copy of the most recent Consumer Confidence Report. Drinking water monitoring reporting data are also available on the web at <http://www.epa.gov/safewater/ccr1.html>.

## Section 2: Land Uses in the Protection Areas

The Zone IIs for Duxbury Water Department are dominated by forest and residential land uses with smaller areas of commercial and transportation land uses (refer to attached map for details). Land uses and activities that are potential sources of contamination are listed in Table 2, with further detail provided in the Table of Regulated Facilities and Table of Underground Storage Tanks in Appendix A.

### Key Land Uses and Protection Issues include:

1. Inappropriate activities in Zone I
2. Residential land uses
3. Transportation corridors
4. Hazardous materials storage and use

5. Agricultural activities
6. Comprehensive wellhead protection planning

The overall ranking of susceptibility to contamination for the system is high, based on the presence of at least one high threat land use within the water supply protection areas, as seen in Table 2.

**1. Inappropriate Activities in Zone Is** – The Zone I for each of the wells is a 400 foot radius around the wellhead. Massachusetts drinking water regulations (310 CMR 22.00 Drinking Water) requires public water suppliers to own the Zone I, or control the Zone I through a conservation restriction. The nine of ten Zone Is for the wells are completely owned or controlled by the public water system. Only water supply activities are allowed in the Zone I. However, many public water supplies were developed prior to the Department's regulations and contain non water supply activities such as homes and public roads. The following non water supply activities occur in the Zone Is of the system wells:

**Zone I: Partridge Rd. GP Well 4082000-02G** - Residential land uses exist within the Zone I which includes private septic systems.

**Zone I: Lakeshore Drive Well 4082000-04G** - A local road intersects the Zone I.

**Zone I Recommendations:**

- ✓ Educate residents within Zone I on proper septic system operation and maintenance.
- ✓ Educate residents within Zone I on proper hazardous materials storage, use and disposal.
- ✓ To the extent possible, remove all non water supply activities from the Zone Is to comply with DEP's Zone I requirements.
- ✓ Use BMPs for the storage, use, and disposal of hazardous materials such as water supply chemicals and maintenance chemicals.
- ✓ Do not use or store pesticides, fertilizers or road salt within the Zone I.
- ✓ Keep any new non water supply activities out of the Zone I.

**2. Residential Land Uses** – Approximately 50% of the Zone II consists of residential areas. None of the areas have public sewers, and so all use septic

systems. If managed improperly, activities associated with residential areas can contribute to drinking water contamination. Common potential sources of contamination include:

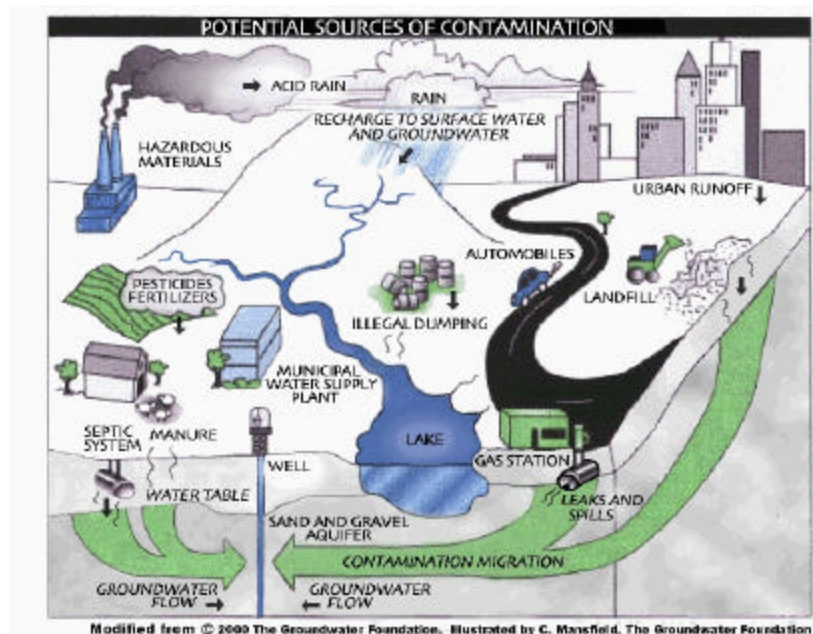
- **Septic Systems** – Improper disposal of household hazardous chemicals to septic systems is a potential source of contamination to the groundwater because septic systems lead to the ground. If septic systems fail or are not properly maintained they can be a potential source of microbial contamination.
- **Household Hazardous Materials** - Hazardous materials may include automotive wastes, paints, solvents, pesticides, fertilizers, and other substances.

## Benefits of Source Protection

Source Protection helps protect public health and is also good for fiscal fitness:

- Protects drinking water quality at the source
- Reduces monitoring costs through the DEP Waiver Program
- Treatment can be reduced or avoided entirely, saving treatment costs
- Prevents costly contamination clean-up
- Preventing contamination saves costs on water purchases, and expensive new source development

Contact your regional DEP office for more information on Source Protection and the Waiver Program.



Improper use, storage, and disposal of chemical products used in homes are potential sources of contamination.

- **Heating Oil Storage** - If managed improperly, Underground and Aboveground Storage Tanks (UST and AST) can be potential sources of contamination due to leaks or spills of the fuel oil they store.
- **Stormwater** – Catch basins transport stormwater from roadways and adjacent properties to the ground. As flowing stormwater travels, it picks up debris and contaminants from streets and lawns. Common potential contaminants include lawn chemicals, pet waste, and contaminants from automotive leaks, maintenance, washing, or accidents.

#### **Residential Land Use Recommendations:**

- ✓ Educate residents on best management practices (BMPs) for protecting water supplies. Distribute the fact sheet “Residents Protect Drinking Water” available in Appendix C and on [www.mass.gov/dep/brp/dws/protect.htm](http://www.mass.gov/dep/brp/dws/protect.htm), which provides BMPs for common residential issues.
- ✓ Work with planners to control new residential developments in the water supply protection areas.
- ✓ Promote BMPs for stormwater management and pollution controls. Visit DEP’s web site for additional information and assistance at <http://www.state.ma.us/dep/brp/wm/nonpoint.htm>.

**3. Transportation Corridors** - Route 3, Route 3A, Route 53, and Route 14 runs through the Zone IIs. Also, local roads are common throughout the Zone IIs. Roadway construction, maintenance, and typical highway use can all be potential sources of contamination. Accidents can lead to spills of gasoline and other potentially dangerous transported chemicals. Roadways are frequent sites for illegal dumping of hazardous or other potentially harmful wastes. De-icing salt, automotive chemicals and other debris on roads are picked up by stormwater and wash in to catchbasins.

#### **Transportation Corridor Recommendations:**

- ✓ Identify stormwater drains and the drainage system along transportation

corridors. Wherever possible, ensure that drains discharge stormwater outside of the Zone II.

- ✓ Work with the Town and State to have catch basins inspected, maintained, and cleaned on a regular schedule. Street sweeping reduces the amount of potential contaminants in runoff.
- ✓ Work with local emergency response teams to ensure that any spills within the Zone II can be effectively contained.
- ✓ If storm drainage maps are available, review the maps with emergency response teams. If maps aren’t yet available, work with town officials to investigate mapping options such as the upcoming Phase II Stormwater Rule requiring some communities to complete stormwater mapping.

**4. Hazardous Materials Storage and Use** – Small areas of the Zone IIs and IWPA are zoned for commercial land use. Activities associated with

(Continued on page 6)

#### **What are "BMPs?"**

Best Management Practices (BMPs) are measures that are used to protect and improve surface water and groundwater quality. BMPs can be structural, such as oil & grease trap catch basins, nonstructural, such as hazardous waste collection days or managerial, such as employee training on proper disposal procedures.

#### **For More Information**

Contact Isabel Collins in DEP’s Lakeville Office at (508) 946-2726 for more information and assistance on improving current protection measures.

Copies of this report have been provided to the public water supplier, board of health, and the town.

#### **Source Protection Decreases Risk**

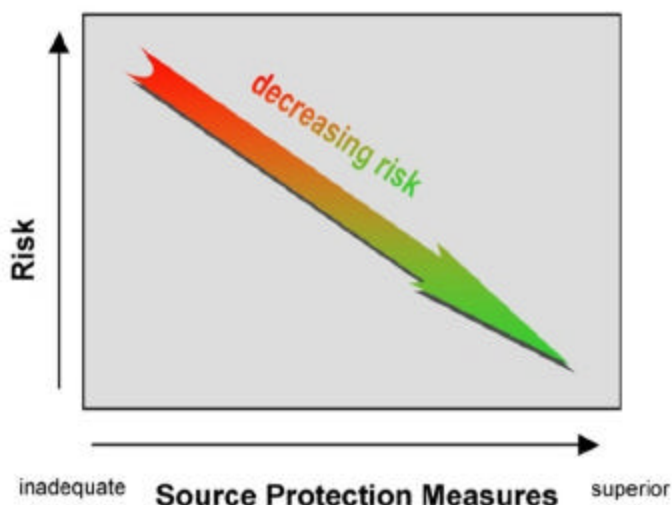


Figure 2: Risk of contamination decreases as source protection increases. This is true for public water systems of any susceptibility ranking, whether High, Moderate, or Low.

### Potential Source of Contamination vs. Actual Contamination

The activities listed in Table 2 are those that typically use, produce, or store contaminants of concern, which, if managed improperly, are potential sources of contamination (PSC).

It is important to understand that a release may never occur from the potential source of contamination provided facilities are using best management practices (BMPs). If BMPs are in place, the actual risk may be lower than the threat ranking identified in Table 2. Many potential sources of contamination are regulated at the federal, state and/or local levels, to further reduce the risk.

**Table 2: Land Use in the Protection Areas (Zones I and II)**

For more information, refer to Appendix A: Regulated Facilities within the Water Supply Protection Area

Land Uses	Quantity	Threat	Zone II #	Potential Contaminant Sources*
<b>Agricultural</b>				
Fertilizer Storage or Use	10+	M	Both	Fertilizers: leaks, spills, improper handling, or over-application
Livestock Operations	1	M	133	Manure (microbial contaminants): improper handling – Turkey Farm
Pesticide Storage or Use	10+	H	Both	Pesticides: leaks, spills, improper handling, or over-application
Slaughterhouses	1	M	133	Manure and other waste products (microbial contaminants): improper handling – Turkey farm
<b>Commercial</b>				
Car/Truck/Bus Washes	1	L	146	Vehicle wash water, soaps, oils, greases, metals, and salts: improper management
Gas Stations	1	H	Both	Automotive fluids and fuels: spills, leaks, or improper handling or storage
Golf Courses	1	M	146	Fertilizers or pesticides: over-application or improper handling
Nursing Homes	1	L	133	Microbial contaminants: improper management
Repair Shops (Engine, Appliances, Etc.)	1	H	146	Engine fluids, lubricants, and solvents: spills, leaks, or improper handling or storage
<b>Residential</b>				
Fuel Oil Storage (at residences)	25+	M	Both	Fuel oil: spills, leaks, or improper handling
Lawn Care / Gardening	25+	M	Both	Pesticides: over-application or improper storage and disposal
Septic Systems / Cesspools	25+	M	Both	Hazardous chemicals: microbial contaminants, and improper disposal

\*See Table 2 notes on Page 6.



**Table 2 Continued: Land Use in the Protection Areas (Zones I and II)**

For more information, refer to Appendix A: Regulated Facilities within the Water Supply Protection Area

Land Uses	Quantity	Threat	Zone II #	Potential Contaminant Sources*
<b>Miscellaneous</b>				
Aquatic Wildlife	Several	L	Both	Microbial contaminants
Composting Facilities	1	L	146	Organic material, animal waste, and runoff: storage and improper handling
Landfills and Dumps	1	H	146	Seepage of leachate
Road And Maintenance Depots	1	M	146	Deicing materials, automotive fluids, fuel storage, and other chemicals: spills, leaks, or improper handling or storage
Schools, Colleges, and Universities	1	M	133	Fuel oil, laboratory, art, photographic, machine shop, and other chemicals: spills, leaks, or improper handling or storage
Transmission Line Rights-of-Way	1	L	146	Corridor maintenance pesticides: over-application or improper handling; construction
Transportation Corridors	1	M	Both	Fuels and other hazardous materials: accidental leaks or spills; pesticides: over-application or improper handling
Waste Transfer/Recycling Station	1	M	146	Water contacting waste materials: improper management, seepage, and runoff

**Table 2 Notes:**

1. When specific potential contaminants are not known, typical potential contaminants or activities for that type of land use are listed. Facilities within the watershed may not contain all of these potential contaminant sources, may contain other potential contaminant sources, or may use Best Management Practices to prevent contaminants from reaching drinking water supplies.
2. For more information on regulated facilities, refer to Appendix A: Regulated Facilities within the Water Supply Protection Area information about these potential sources of contamination.
3. For information about Oil or Hazardous Materials Sites in your protection areas, refer to Appendix B: Tier Classified Oil and/or Hazardous Material Sites.

\* **THREAT RANKING** - The rankings (high, moderate or low) represent the relative threat of each land use compared to other PSCs. The ranking of a particular PSC is based on a number of factors, including: the type and quantity of chemicals typically used or generated by the PSC; the characteristics of the contaminants (such as toxicity, environmental fate and transport); and the behavior and mobility of the pollutants in soils and groundwater.

(Continued from page 4)

commercial and industrial land use are often the greatest concern when evaluating water supply protection. Many small businesses and industries use hazardous materials, produce hazardous waste products, and/or store large quantities of hazardous materials in UST/AST. If hazardous materials are improperly stored, used, or disposed, they become potential sources of contamination. Hazardous materials should never be disposed of to a septic system or floor drain leading directly to the ground.

**Hazardous Materials Storage and Use Recommendations:**

- ✓ Educate local businesses on best management practices for protecting water supplies. Distribute the fact sheet “Businesses Protect Drinking Water” available in Appendix C and on [www.mass.gov/dep/brp/dws/protect.htm](http://www.mass.gov/dep/brp/dws/protect.htm), which provides BMP’s for common business issues.
- ✓ Work with local businesses to register those facilities that are unregistered generators of hazardous waste or waste oil. Partnerships between businesses, water suppliers, and communities enhance successful public drinking water protection practices.
- ✓ Educate local businesses on Massachusetts floordrain requirements. See brochure “Industrial Floor Drains” for

more information.

**5. Agricultural Activities** – There are several active cranberry bogs and one turkey farm within the Zone IIs. Pesticides and fertilizers have the potential to contaminate a drinking water source if improperly stored, applied, or disposed. If not contained or applied properly, animal waste from barnyards, manure pits and field application are potential sources of contamination to ground and surface water.

**Agricultural Activities Recommendation:**

- ✓ Work with farmers in your protection areas to make them aware of your water supply and to encourage the use of a US Natural Resources Conservation Service farm plan to protect water supplies.
- ✓ Work with farmers to investigate grants and loans designed to protect surface and groundwater. See <http://www.nrcs.usda.gov/programs/farmbill/2002/pdf/EQIPFct.pdf> for more information on the USDA Environmental Quality Incentives Program (EQIP). Information on the MA Department of Food Agriculture's Agricultural Environmental Enhancement Program (AEEP) is available on the web at <http://www.state.ma.us/dfa/programs/aEEP/>.

**6. Protection Planning** – Currently, the Duxbury does not have water supply protection controls that meet DEP's Wellhead Protection regulations 310 CMR 22.21(2). Protection planning protects drinking water by managing the land area that supplies water to a well. A Wellhead Protection Plan coordinates community efforts, identifies protection strategies, establishes a timeframe for implementation, and provides a forum for public participation. There are resources available to help communities develop a plan for protecting drinking water supply wells.

**Protection Planning Recommendations:**

- ✓ Develop a Wellhead Protection Plan. Establish a protection team, and refer them to <http://mass.gov/dep/brp/dws/protect.htm> for a copy of DEP's guidance, "Developing a Local Wellhead Protection Plan".
- ✓ Coordinate efforts with local officials to compare local wellhead protection controls with current MA Wellhead Protection Regulations 310 CMR 22.21 (2). If there are no local controls or they do not meet the current regulations,

adopt controls that meet 310 CMR 22.21(2). For more information on DEP land use controls see <http://mass.gov/dep/brp/dws/protect.htm>.

- ✓ If local controls do not regulate floordrains, be sure to include floordrain controls that meet 310 CMR 22.21(2).
- ✓ Work with town boards to review and provide recommendations on proposed development within your water supply protection areas. To obtain information on build-out analyses for the town, see the Executive Office of Environmental Affairs' community preservation web site, <http://commpres.env.state.ma.us/>.

Other land uses and activities within the Zone IIs include an old landfill, DPW garage and a school. Refer to Table 2 and Appendix A for more information about these land uses.

Identifying potential sources of contamination is an important initial step in protecting your drinking water sources. Further local investigation will provide more in-depth information and may identify new land uses and activities that are potential sources of contamination. Once potential sources of contamination are identified, specific recommendations like those below should be used to better protect your water supply.

**Top 5 Reasons to  
Develop a Local Wellhead  
Protection Plan**

- ➊ Reduces Risk to Human Health
- ➋ Cost Effective! Reduces or Eliminates Costs Associated With:
  - ♦ Increased groundwater monitoring and treatment
  - ♦ Water supply clean up and remediation
  - ♦ Replacing a water supply
  - ♦ Purchasing water
- ➌ Supports municipal bylaws, making them less likely to be challenged
- ➍ Ensures clean drinking water supplies for future generations
- ➎ Enhances real estate values – clean drinking water is a local amenity. A community known for its great drinking water in a place people want to live and businesses want to locate.



*(Continued on page 9)*

**Table 3: Current Protection and Recommendations**

<b>Protection Measures</b>	<b>Status</b>	<b>Recommendations</b>
<b>Zone I</b>		
Does the Public Water Supplier (PWS) own or control the entire Zone I?	<b>YES/NO</b>	Follow Best Management Practices (BMP's) that focus on good housekeeping, spill prevention, and operational practices to reduce the use and release of hazardous materials.
Is the Zone I posted with "Public Drinking Water Supply" Signs?	<b>YES</b>	Additional economical signs are available from the Northeast Rural Water Association (802) 660-4988.
Is Zone I regularly inspected?	<b>YES</b>	Continue daily inspections of drinking water protection areas.
Are water supply-related activities the only activities within the Zone I?	<b>NO</b>	Continue monitoring non-water supply activities in Zone Is and educate residents in Zone I about BMPs for water supply protection.
<b>Municipal Controls</b> (Zoning Bylaws, Health Regulations, and General Bylaws)		
Does the municipality have Wellhead Protection Controls that meet 310 CMR 22.21(2)?	<b>NO</b>	Work with Town officials to pass bylaws and regulations required in DEP's 310 CMR 22.21(2). Refer to <a href="http://www.state.ma.us/dep/brp/dws/">www.state.ma.us/dep/brp/dws/</a> for model bylaws and health regulations, and current regulations.
Do neighboring communities protect the Zone II areas extending into their communities?	<b>NO</b>	Work with neighboring municipalities to include Zone IIs in their wellhead protection controls.
<b>Planning</b>		
Does the PWS have a Wellhead Protection Plan?	<b>NO</b>	Develop a wellhead protection plan. Follow "Developing a Local Wellhead Protection Plan" available at: <a href="http://www.state.ma.us/dep/brp/dws/">www.state.ma.us/dep/brp/dws/</a> .
Does the PWS have a formal "Emergency Response Plan" to deal with spills or other emergencies?	<b>YES</b>	Augment plan by developing a joint emergency response plan with fire department, Board of Health, DPW, and local and state emergency officials. Coordinate emergency response drills with local teams.
Does the municipality have a wellhead protection committee?	<b>NO</b>	Establish committee; include representatives from citizens' groups, neighboring communities, and the business community.
Does the Board of Health conduct inspections of commercial and industrial activities?	<b>YES</b>	For more guidance see "Hazardous Materials Management: A Community's Guide" at <a href="http://www.state.ma.us/dep/brp/dws/files/hazmat.doc">www.state.ma.us/dep/brp/dws/files/hazmat.doc</a>
Does the PWS provide wellhead protection education?	<b>YES</b>	Aim additional efforts at commercial, industrial and municipal uses within the Zone II.



## Section 3: Source Water Protection Conclusions and Recommendations

### Current Land Uses and Source Protection:

As with many water supply protection areas, the system's Zone IIs contain potential sources of contamination. However, source protection measures reduce the risk of actual contamination, as illustrated in Figure 2. The water supplier is commended for taking an active role in promoting source protection measures in the Water Supply Protection Areas through:

- The ownership or control of nine of the ten Zone Is for Duxbury.
- Taking an active role in the South Coastal Watershed group.
- Providing water conservation devices to customers.

### Source Protection Recommendations:

To better protect the sources for the future:

- ✓ Inspect the Zone I regularly, and when feasible, remove any non-water supply activities.
- ✓ Educate residents on ways they can help you to protect drinking water sources.
- ✓ Establish a Wellhead Protection Committee consisting of members from the Water Department, Town Officials, citizens groups and business groups.
- ✓ Work with emergency response teams to ensure that they are aware of the stormwater drainage in your Zone II and to cooperate on responding to spills or accidents.
- ✓ Partner with local businesses to ensure the proper storage, handling, and disposal of hazardous materials.
- ✓ Work with farmers in your protection areas to make them aware of your water supply and to encourage the use of a NRCS farm plan to protect water supplies.
- ✓ Develop and implement a Wellhead Protection Plan.

### Conclusions:

These recommendations are only part of your ongoing local drinking water source protection. Additional source protection recommendations are listed in Table 3, the Key Issues above and Appendix C.

DEP staff, informational documents, and resources are available to help you build on this SWAP report as you continue to improve drinking water protection in your community. Grants and loans are available through the Drinking Water State Revolving Loan Fund, the Clean Water State Revolving Fund, and other sources. For more information on grants and loans, visit the Bureau of Resource Protection's Municipal Services web site at: <http://mass.gov/dep/brp/mf/mfpubs.htm>.

The assessment and protection recommendations in this SWAP report are provided as a tool to encourage community discussion, support ongoing source protection efforts, and help set local drinking water protection priorities. Citizens and community officials should use this SWAP report to spur discussion of local drinking water protection measures. The water supplier should supplement this SWAP report with local information on potential sources of contamination and land uses. Local information should be maintained and updated periodically to reflect land use changes in the Zone II. Use this information to set priorities, target

### What is a Zone III?

A Zone III (the secondary recharge area) is the land beyond the Zone II from which surface and ground water drain to the Zone II and is often coincident with a watershed boundary.

The Zone III is defined as a secondary recharge area for one or both of the following reasons:

1. The low permeability of underground water bearing materials in this area significantly reduces the rate of groundwater and potential contaminant flow into the Zone II.
2. The groundwater in this area discharges to a surface water feature such as a river, rather than discharging directly into the aquifer.

The land uses within the Zone III are assessed only for sources that are shown to be groundwater under the direct influence of surface water.

### Additional Documents:

To help with source protection efforts, more information is available by request or online at [mass.gov/dep/brp/dws](http://mass.gov/dep/brp/dws) including:

1. Water Supply Protection Guidance Materials such as model regulations, Best Management Practice information, and general water supply protection information.
2. MA DEP SWAP Strategy
3. Land Use Pollution Potential Matrix
4. Draft Land/Associated Contaminants Matrix

inspections, focus education efforts, and to develop a long-term drinking water source protection plan.

#### **Section 4: Appendices**

- A. Regulated Facilities within the Water Supply Protection Area
- B. Table of Tier Classified Oil and/or Hazardous Material Sites within the Water Supply Protection Areas
- C. Additional Documents on Source Protection

**APPENDIX A: REGULATED FACILITIES WITHIN THE WATER SUPPLY PROTECTION AREAS**

Page 1 of 2

DEP Permitted Facilities:

DEP Facility Number	Facility Name	Street Address	Town	Permitted Activity	Activity Class
30334	FREDS DUXBURY FIXIT SHOP INC	638SUMMER ST	DUXBURY	Generator of Hazardous Waste	Very Small Quantity Generator of Hazardous Waste
37745	DUXBURY CLIPPER	11 S STATION ST	DUXBURY	Generator of Hazardous Waste	Very Small Quantity Generator of Hazardous Waste
37880	OSBORNS COUNTRY STORE INC	632 SUMMER ST	DUXBURY	Generator of Hazardous Waste	Very Small Quantity Generator of Hazardous Waste
37880	OSBORNS COUNTRY STORE INC	632 SUMMER ST	DUXBURY	Fuel Dispenser	Fuel Dispenser
39224	DUXBURY TRANSFER STATION	MAYFLOWER ST	DUXBURY	Transfer Station	Transfer Station for Hazardous Material
39224	DUXBURY DEPT OF PUBLIC WORKS	DUXBURY TRANSFER STATION	DUXBURY	Generator of Hazardous Waste	Small Quantity Generator
39225	DUXBURY LANDFILL	MAYFLOWER RD	DUXBURY	Sanitary Landfill	Landfill
130649	MAYFLOWER CEMETERIES	774 TREMONT ST	DUXBURY	Plant	Air Quality Permit
130649	DUXBURY CEMETERY DEPT	774 TREMONT ST	DUXBURY	Generator of Hazardous Waste	Small Quantity Generator
132613	DUXBURY TOWN OF DPW	878 TREMONT ST	DUXBURY	Generator of Hazardous Waste	Very Small Quantity Generator of Hazardous Waste
260220	DUXBURY FIRE CENTRAL	668 TREMONT STREET	DUXBURY	Fuel Dispenser	Fuel Dispenser

DEP Permitted Facilities:

**Underground Storage Tanks:**

Facility Name	Address	Town	Tank Material	Tank Type	Tank Leak Detection	Capacity (gal)	Contents
<b>CENTRAL FIRE STATION ID #13203</b>	668 TREMONT ST	DUXBURY	Composite	2 Walls	Interstitial Monitoring	10000	Diesel
			Composite	2 Walls	Interstitial Monitoring	10000	Gasoline
<b>OSBORN'S COUNTRY STORE INC ID #40578</b>	632 SUMMER ST	DUXBURY	Cathodic	2 Walls	Interstitial Monitoring	6000	Gasoline
			Cathodic	2 Walls	Interstitial Monitoring	6000	Gasoline
<b>PHILLIPS TREE REMOVAL INC ID #33864</b>	14R STANDISH ST	DUXBURY	Steel	1 Wall	Inventory Record-Keeping	138 *	Fuel Oil *

For more information on underground storage tanks, visit the Massachusetts Department of Fire Services web site: <http://www.state.ma.us/dfs/ust/ustHome.htm>

Note: This appendix includes only those facilities within the water supply protection area(s) that meet state reporting requirements and report to the appropriate agencies. Additional facilities may be located within the water supply protection area(s) that should be considered in local drinking water source protection planning.

\* Above Ground Tank

## **APPENDIX B – Table of Tier Classified Oil and/or Hazardous Material Sites within the Water Supply Protection Areas**

DEP's datalayer depicting oil and/or hazardous material (OHM) sites is a statewide point data set that contains the approximate location of known sources of contamination that have been both reported and classified under Chapter 21E of the Massachusetts General Laws. Location types presented in the layer include the approximate center of the site, the center of the building on the property where the release occurred, the source of contamination, or the location of an on-site monitoring well. Although this assessment identifies OHM sites near the source of your drinking water, the risks to the source posed by each site may be different. The kind of contaminant and the local geology may have an effect on whether the site poses an actual or potential threat to the source.

The DEP's Chapter 21E program relies on licensed site professionals (LSPs) to oversee cleanups at most sites, while the DEP's Bureau of Waste Site Cleanup (BWSC) program retains oversight at the most serious sites. This privatized program obliges potentially responsible parties and LSPs to comply with DEP regulations (the Massachusetts Contingency Plan – MCP), which require that sites within drinking water source protection areas be cleaned up to drinking water standards.

For more information about the state's OHM site cleanup process to which these sites are subject and how this complements the drinking water protection program, please visit the BWSC web page at <http://www.state.ma.us/dep/bwsc>. You may obtain site - specific information two ways: by using the BWSC Searchable Sites database at <http://www.state.ma.us/dep/bwsc/sitelist.htm>, or you may visit the DEP regional office and review the site file. These files contain more detailed information, including cleanup status, site history, contamination levels, maps, correspondence and investigation reports, however you must call the regional office in order to schedule an appointment to view the file.

The table below contains the list of Tier Classified oil and/or Hazardous Material Release Sites that are located within your drinking water source protection area.

**Table 1:** Bureau of Waste Site Cleanup Tier Classified Oil and/or Hazardous Material Release Sites (Chapter 21E Sites) - Listed by Release Tracking Number (RTN)

RTN	Release Site Address	Town	Contaminant Type
No DEP Tier Classified Sites were identified within the Zone IIs at the time of assessment.			

For more location information, please see the attached map. The map lists the release sites by RTN.

\* Site recently classified, not reflected in current GIS map.