

# Massachusetts Education-to-Career Research and Data Hub (E2C Hub)

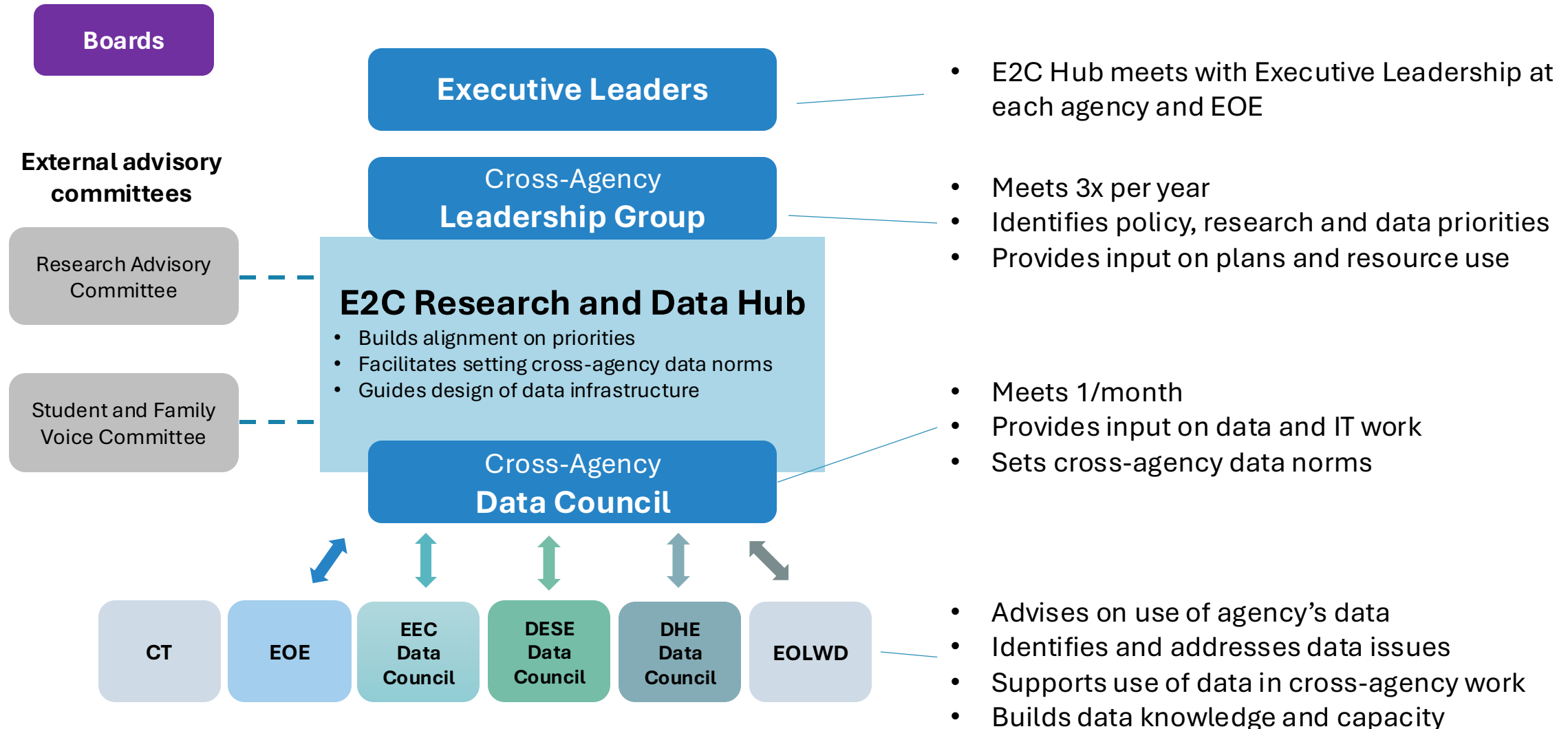
## Research Advisory Committee

May 13, 2025

# Agenda

- **Recap of Last Meeting (10 min)**
- **General Updates (15 min)**
- **Updates on Existing Research (20 min)**
- **Briefing on MA Trends (30 min)**
- **Wrap up**

# E2C Hub governance and decision-making structure



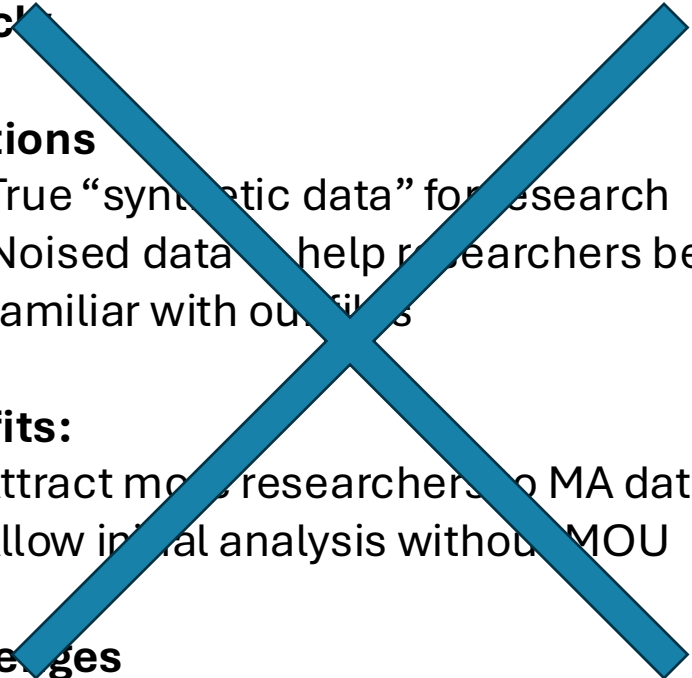
# What are we talking about here?



## Research Enclave

- **Same confidential data, more security**
- **Benefits**
  - Makes it easier to provide datasets quickly
  - Increased security for data
  - Potential links to other states, use of existing reports
- **Challenges:**
  - Possibly limited set of software tools
  - Hiccups in implementation
  - Difficulty when researchers want to merge in their own datasets

## Public Research Files

- 
- **Non-confidential row-level data, posted public**
  - **Variations**
    1. True “synthetic data” for research
    2. Noised data to help researchers become familiar with our files
  - **Benefits:**
    - Attract more researchers to MA data
    - Allow initial analysis without MOU
  - **Challenges**
    - Risk of misunderstanding, incorrect findings
    - Difficult to construct

# E2C Vision

## Vision

**Data and research** from early education through career are **easy to access, well understood**, and **used to inform equitable policy, practice, and individual education choices**.

## Key Components

- Leaders and policymakers have a strong, common **framework for using data and research to inform decisions**. Policymakers and staff use the E2C Hub to find **timely data, analysis and research to support decision-making** and resource allocation.
  - The **E2C Hub links education data to other datasets** to obtain a more complete picture of the factors in students' education, collaborating with EOTSS and other secretariats to create and maintain secure, automated methods of linking.
- **Researchers engage on top priorities** as advisors on evidence-based policy-making, offering expertise on relevant research, measures of implementation and impact, and evaluation research.
- The public **E2C Hub is a one-stop shop** for all non-sensitive data and makes the data easily available with a common set of tools. Learn the tool once, gain **access to all education-to-career data** in one place.
- The **E2C Hub develops and supports a data strategy** for education agencies, to establish trusted and documented internal sources for data, build agency capacity for using data, and explore how cutting-edge data tools can improve access and use.

## Measurable Progress for FY25

- Research request portal goes live for cross-agency projects
- Data on research proposals tracked publicly: # of proposals, # of researchers, approval rate, timeline to approve.
- E2C Hub updates research community on research priorities and existing projects at least 3x per year via newsletter, FoLDS meetings and RAC

# Agenda

- **Recap of Last Meeting (10 min)**
- **General Updates (15 min)**
- **Updates on Existing Research (20 min)**
- **Briefing on MA Trends (30 min)**
- **Wrap up**

# General Updates

---

- **Research Agendas**
  - All three complete and [published here](#)
- **Wage data**
  - Linkage for K-12 records at an impasse
  - Message will be shared with researchers, added to data and Researcher's Guide
- **Research proposal submission portal**
- **Hiring for Research and Equity Specialist**
- **RAC membership plan**

# Data stories: 2025 plan

Approx Timing	Topic	Agency focus
Done	Universal PreK Expansion	EEC, EOE
Apr-Jun	Early Literacy Screeners	DESE, EOE
Apr-Jun	MassCore Trends	DESE
Jul-Sept	HS Pathways and Workforce Development	DESE, EOLWD?
Jul-Dec	College Costs: Net Tuition and Fees Trends	DHE



# Agenda

- **Recap of Last Meeting (10 min)**
- **General Updates (15 min)**
- **Updates on Existing Research (20 min)**
- **Briefing on MA Trends (30 min)**
- **Wrap up**

# How to keep the research community updated

## Fields from the new proposal form

- Name of organization
- Agencies involved
- Research project title
  - Scope and purpose
  - Research questions
  - Methodology
- Program office within DESE or other agency
- Data elements provided
  - Years covered

## Data Request Status Lookup

This portal allows you to look up the status of projects by email. You can enter the email for either the primary investigator or the data liaison. The status column shows how the project is progressing through the following review steps:

- Request Submitted
- Research team review
- State agency legal review
- Institution review
- Execution of MOU
- Fulfilling data request

## Results

Project Title	Project ID	Status	Submitted On
NO REQUEST FOUND			

# Indicating projects in the research agendas

## *Economic Mobility: Increasing the Economic Mobility Benefits of Postsecondary Participation.*

### Measures of College Success

*To what extent does higher education contribute to greater earnings or other measures of job quality post-degree?*

- What is the impact of IHE attendance and degree completion on future earnings? What IHEs, degree types or majors contribute most to future earnings?
- What is the impact on industry, occupation and employment stability? What other measures related to job quality can be included in measure of IHE impact (e.g. benefits, career paths, etc.)?
- To what extent are students of color, low-income students and historically underrepresented groups in public higher ed reaching the most highly compensated career paths?

### Return on Investment

*What is the ROI for students participating in higher education?*

- What is the debt-to-earnings ratio for students in general? How does financial aid change that ratio?

*What ROI does the state see from the investment in financial aid programs?*

- What is the estimated long-run cost savings from the improved degree completion resulting from financial aid programs? Accounting for increased tax revenue, decreased social services and other costs, what is the ROI for the state?
- How does the ROI vary by institution or region? Are there bright spots that offer lessons for improving the ROI statewide?

→ • **External research MOUs** tied to this question

→ • **Internal projects** tied to this question

• **Top priority** questions where more research is sought

# Agenda

- **Recap of Last Meeting (10 min)**
- **General Updates (15 min)**
- **Updates on Existing Research (20 min)**
- **Briefing on MA Trends (30 min)**
- **Wrap up**

# Discussion: Most important research and data for 2025

---

- What trends, studies or charts do you want to highlight for DESE as we head into a period of new leadership?

## Breakout Rooms

**1. Early education**

**2. K-12 student trends**

**5. Higher education**

**3. K-12 best practices**

**6. Workforce**

**4. K-12 educators**