

DHCD EA Monthly Report, Statewide Summary

August 2020

EA Applications and Placements

EA Applications	Aug-20	Jul-20	FY21 YTD
Families Applying for EA	589	261	850
Health & Safety Assessments Completed	100	95	195
Families with Health & Safety Risk	85	85	170
Families Entering EA (Shelter, Motels, and HomeBASE)	182	132	314
Placement-to-Application Ratio	31%	51%	37%

Notes:

Families submitting more than one application during a month were counted once.

Families entering EA includes families entering shelter or hotels/motels and families diverted from shelter or hotels/motels into HomeBASE at the front door.

The standard used to determine substantial health and safety risk can be found at the following link:

<https://www.mass.gov/files/documents/2016/07/oe/healthandsafetyassessmentinitiativeadministrativeplan.pdf>

EA Placements	Aug-20		Jul-20		FY21 YTD	
	Number	Percent	Number	Percent	Number	Percent
Total Entering EA or HomeBASE	182	100%	132	100%	314	100%
Entering EA Shelter/Motels	161	88%	116	88%	277	88%
Presumptive Placements	71	39%	60	45%	131	42%
Shelters	160	88%	116	88%	276	88%
Motels	1	1%	0	0%	1	<1%
HomeBASE Diversions (Front Door)	21	12%	16	12%	37	12%

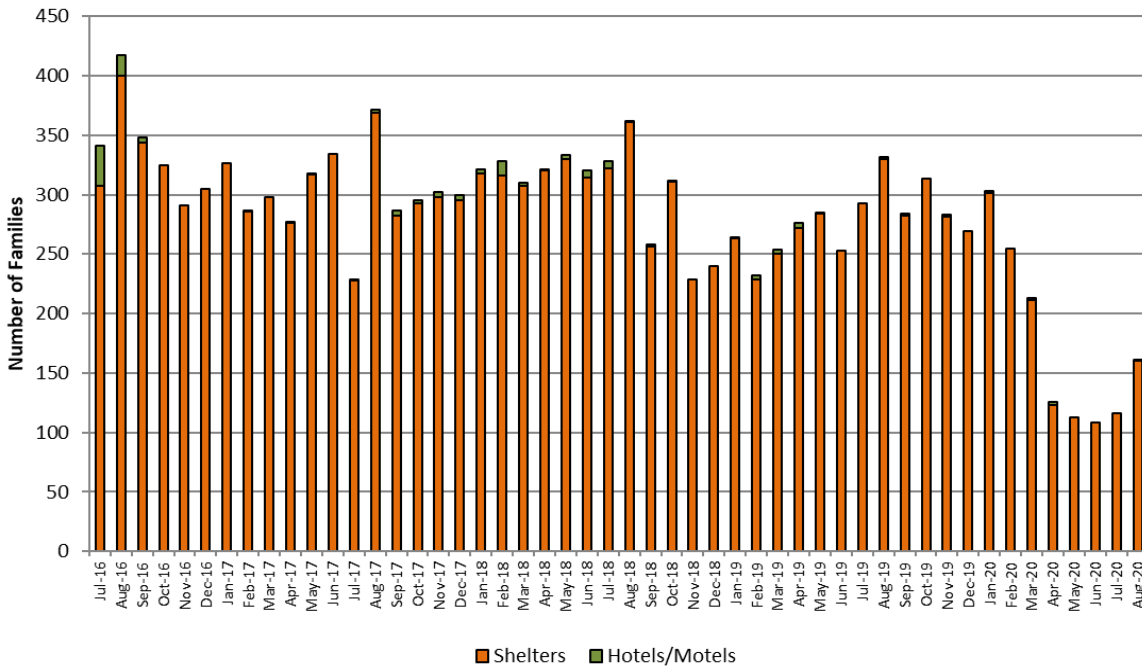
EA Shelter/Motels Placements, Reasons for Homelessness

	Aug-20		Jul-20		FY21 YTD	
	Number	Percent	Number	Percent	Number	Percent
Total	161	100%	116	100%	277	100%
Domestic Violence	40	25%	25	22%	65	23%
Fire/Natural Disaster	3	2%	2	2%	5	2%
Evict: Condemnation	1	1%	0	0%	1	<1%
Evict: Excused Conduct	0	0%	0	0%	0	0%
Evict: Foreclosure	0	0%	0	0%	0	0%
Evict: Non Payment - Medical	0	0%	0	0%	0	0%
Evict: Non Payment - Disability	0	0%	0	0%	0	0%
Evict: Non Payment - Income Loss	1	1%	0	0%	1	<1
Evict: Non Renewal of Tenancy	0	0%	1	1%	1	0%
Threatened Evict - Unauthorized Tenant	7	4%	6	5%	13	5%
H&S: Violent Conduct	4	2%	1	1%	5	2%
H&S: Mental Illness	3	2%	2	2%	5	2%
H&S: Substance Abuse	2	1%	0	0%	2	1%
H&S: Conditions in Unit	2	1%	6	5%	8	3%
H&S: Irregular Housing situation	56	35%	55	47%	111	40%
H&S: Not Meant for Human Habitation	36	22%	13	11%	49	18%
TESI or Aid Pending	6	4%	5	4%	11	4%

Note: Families whose HomeBASE rental assistance benefit ended during the month may be placed in later months.

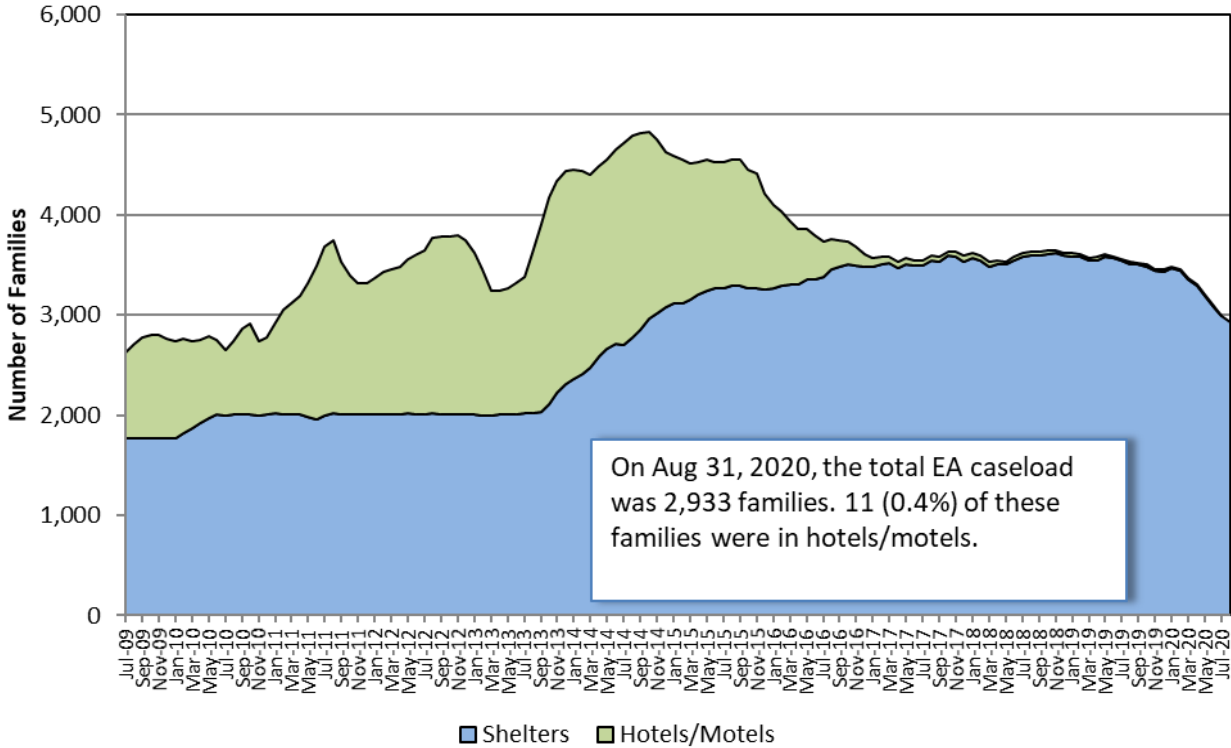
Sources: EA Daily Entry Reports and ASIST.

EA Shelter and Hotel/Motel Placements



EA Caseload

Average Daily EA Shelter & Hotel/Motel Caseload, Jul. 2009- Aug. 2020



Note: Methodology for calculating shelter caseload changed in FY15 from an average daily number of contracted units (minus vacancies) to an end-of-the-month count of occupied shelter units using DHCD's bed registry.

Children Served

Age Range	Aug-20		Jul-20		FY21 Monthly Average	
	# Children	% Children	Number	Percent	Number	Percent
Total	5,948	100%	6,048	100%	5,998	100%
0-2 yrs.	1,239	21%	1,252	21%	1,246	21%
3-4 yrs.	783	13%	798	13%	791	13%
5-8 yrs.	1,395	23%	1,411	23%	1,403	23%
9-11 yrs.	931	16%	948	16%	940	16%
12-14 yrs.	732	12%	748	12%	740	12%
15-18 yrs.	698	12%	709	12%	704	12%
19-20 yrs.	170	3%	182	3%	176	3%

Note: Data indicate children active in EA shelters or hotels at end of the month.

EA Exits

Families Exiting Shelter and Hotels/Motels	Aug-20		Jul-20		FY21 YTD	
	Number	Percent	Number	Percent	Number	Percent
Total Exits	202	100%	194	100%	396	100%
Abandoned	24	12%	20	10%	44	11%
Criminal Activity	0	0%	0	0%	0	0%
Feasible Alternative Housing with HB	127	63%	130	67%	257	65%
Feasible Alternative Housing without HB	29	14%	28	14%	57	14%
Ineligible	2	1%	5	3%	7	2%
Rejected Placement	2	1%	0	0%	2	1%
Noncompliance	1	<1%	0	0%	1	<1%
Temporary Shelter Interruption	17	8%	11	6%	28	7%
Other/Unknown	0	0%	0	0%	0	0%

Notes:

Families terminated from shelter for abandoning their placements or non-compliance may return to the system pending an appeal.

Families receiving a Temporary Shelter Interruption may return to the system within 30 days.

Types of Subsidies	Aug-20		Jul-20		FY21 YTD	
	Number	Percent	Number	Percent	Number	Percent
Total Families Receiving Subsidies	145	100%	141	100%	286	100%
ESG	0	0%	0	0%	0	0%
HomeBASE	127	88%	130	92%	257	90%
HUD CoC	2	1%	3	2%	5	2%
MRVP	6	4%	3	2%	9	3%
Private Subsidized Housing	10	7%	13	9%	23	8%
Section 8 Mobile Voucher	60	41%	49	35%	109	38%
Section 8 Project-Based Voucher	4	3%	8	6%	12	4%
Other Public Housing	15	10%	5	4%	20	7%
Transportation	1	1%	0	0%	1	<1%

Notes:

Families may receive multiple subsidy types. Therefore, the sum of the subsidy types do not equal the number of families.

Data based on date of shelter/hotel exit. HomeBASE data based on the date that checks are issued may vary.

RAFT - Homelessness Prevention

RAFT	Aug-20		Jul-20		FY21 YTD	
	Number	Percent	Number	Percent	Number	Percent
Total Applying	1,136		843		1,979	
Total Approved	905	100%	791	100%	1,696	100%
Upstream rent arrears-public/subsidized	48	5%	21	3%	69	4%
Upstream rent arrears-market rent	103	11%	102	13%	205	12%
Upstream mortgage arrears	7	1%	15	2%	22	1%
Doubled up and asked to leave	52	6%	57	7%	109	6%
Domestic violence	10	1%	3	0%	13	1%
Eviction-public/subsidized	115	13%	104	13%	219	13%
Eviction-market rent	437	48%	398	50%	835	49%
Foreclosure	28	3%	27	3%	55	3%
Fire/flood/natural disaster	4	<1%	4	1%	8	<1%
Health/safety	42	5%	21	3%	63	4%
Overcrowding	0	0%	2	<1%	2	<1%
Utility shutoff	28	3%	18	2%	46	3%
Other	16	2%	19	2%	35	2%
COVID-inability to pay future market rent	14	2%	0	0%	14	1%
COVID-inability to pay future mortgage	1	<1%	0	0%	1	<1%

Note: Families approved for RAFT may have applied during the previous month.

DHCD - EA Monthly Report

Aug-20

	Aug #	Aug %	Jul #	FY21 YTD	
Families Applying for EA					
Total	589	100%	261	850	100%
Boston	180	31%	45	225	26%
Central Mass	49	8%	24	73	9%
North Shore	152	26%	87	239	28%
South Shore	97	16%	55	152	18%
Western Mass	111	19%	50	161	19%
Families Placed in EA Shelter and Hotels/Motels					
Total	161	100%	116	277	100%
Boston	78	48%	45	123	44%
Central Mass	19	12%	13	32	12%
North Shore	25	16%	16	41	15%
South Shore	20	12%	19	39	14%
Western Mass	19	12%	23	42	15%
HomeBASE Entries (Diversion and Exits)					
Total	166	100%	160	326	100%
Berkshire Housing	4	2%	3	7	2%
Community Teamwork, Inc.	23	14%	7	30	9%
Franklin County	0	0%	0	0	0%
Housing Assistance Corp.	1	1%	4	5	2%
Way Finders	25	15%	24	49	15%
Metro Housing Boston	74	45%	71	145	44%
RCAP Solutions	3	2%	3	6	2%
South Middlesex Opportunity Council	9	5%	6	15	5%
NeighborWorks Housing Solutions	20	12%	27	47	14%
Lynn Housing Authority	5	3%	11	16	5%
Central MA Housing Alliance	2	1%	4	6	2%

Notes

Average Daily Number of Families in Hotels is calculated as the average across weekly point-in-time estimates from the reported month; Hotel region indicates region of originating eligibility office. Totals may not equal the sum of regions due to rounding.

Sources: EA Daily Entry Report, ASIST, and EA Weekly Motel Reports.

DHCD - EA Monthly Report, Cumulative Data
August 2020

Families Applying for EA	Jul	Aug	FY21 YTD #	FY21 YTD%
Total Families Applying	261	589	850	100%
Boston	45	180	225	26%
Central Mass	24	49	73	9%
North Shore	87	152	239	28%
South Shore	55	97	152	18%
Western Mass	50	111	161	19%
Health & Safety Assessment				
H&S Assessment Completed	95	100	195	100%
Families with H&S Risk	85	85	170	87%
Families Placed in Shelter/Motels				
Total	116	161	277	100%
Families Placed in Hotels/Motels	0	1	1	0%
Presumptive Placement	60	71	131	47%
Boston	45	78	123	44%
Central Mass	13	19	32	12%
North Shore	16	25	41	15%
South Shore	19	20	39	14%
Western Mass	23	19	42	15%
Monthly Caseload (# of Families)	7/31/2019	8/31/2020	FY21 Monthly Average	
Total	2,996	2,933	2,965	
Shelter	2,985	2,922	2,954	
Hotel/Motel	11	11	11	
Children Served	Jul	Aug	FY21 Monthly Average	FY21 %
Total	6,048	5,948	5,998	100%
0-2 yrs.	1,252	1,239	1,246	21%
3-4 yrs.	798	783	791	13%
5-8 yrs.	1,411	1,395	1,403	23%
9-11 yrs.	948	931	940	16%
12-14 yrs.	748	732	740	12%
15-18 yrs.	709	698	704	12%
19-20 yrs.	182	170	176	3%

	Jul	Aug	FY21 Monthly Average	
Placement to Application Ratio	51%		37%	
Reasons for Homelessness, Shelter/Motels	Jul	Aug	FY20 #	FY20 %
Total Placements	116	161	277	100%
Domestic Violence	25	40	65	23%
Fire/Natural Disaster	2	3	5	2%
Evict: Condemnation	0	1	1	<1%
Evict: Excused Conduct	0	0	0	0%
Evict: Foreclosure	0	0	0	0%
Evict: Non Payment - Medical	0	0	0	0%
Evict: Non Payment - Disability	0	0	0	0%
Evict: Non Payment - Income Loss	0	1	1	<1
Evict: Non Renewal of Tenancy	1	0	1	0%
Threatened Evict - Unauthorized Tenant	6	7	13	5%
H&S: Violent Conduct	1	4	5	2%
H&S: Mental Illness	2	3	5	2%
H&S: Substance Abuse	0	2	2	1%
H&S: Conditions in Unit	6	2	8	3%
H&S: Irregular Housing situation	55	56	111	40%
H&S: Not Meant for Human Habitation	13	36	49	18%
Aid Pending	1	2	3	1%
Replacement/TEI	4	4	8	3%
Shelter and Hotel/Motel Exits				
Total	194	202	396	100%
Abandoned	20	24	44	11%
Criminal Activity/Fraud	0	0	0	0%
Feasible Alternative Housing with HB	130	127	257	65%
Feasible Alternative Housing without HB	28	29	57	14%
Ineligible	5	2	7	2%
No Show/Rejected Placement	0	2	2	1%
NonCompliance/Termination for Cause	0	1	1	<1%
Temporary Shelter Interruption	11	17	28	7%
Other/Unknown	0	0	0	0%

Hotel/Motel Exits	Jul	Aug	FY21 YTD #	FY21 YTD%
Total Exits	0	1	1	
Abandoned	0	0	0	
Criminal Activity	0	0	0	
Feasible Alternative Housing with HB	0	1	1	
Feasible Alternative Housing without HB	0	0	0	
Ineligible	0	0	0	
No Show/Rejected Placement	0	0	0	
NonCompliance/Termination for Cause	0	0	0	
Temporary Shelter Interruption	0	0	0	
Other/Unknown	0	0	0	
Types of Subsidies at Exit				
Total Families Receiving Subsidies	141	145	286	100%
ESG	0	0	0	0%
HomeBASE	130	127	257	90%
HUD CoC	3	2	5	2%
MRVP	3	6	9	3%
Private Subsidized Housing	13	10	23	8%
Section 8 Mobile Voucher	49	60	109	38%
Section 8 Project-Based Voucher	8	4	12	4%
Other Public Housing	5	15	20	7%
Transportation	0	1	1	<1
HomeBASE Entries (Diversion and Exits)				
Total	160	166	326	100%
Berkshire Housing	3	4	7	2%
Community Teamwork, Inc.	7	23	30	9%
Franklin County	0	0	0	0%
Housing Assistance Corp.	4	1	5	2%
Way Finders	24	25	49	15%
Metro Housing Boston	71	74	145	44%
RCAP Solutions	3	3	6	2%
South Middlesex Opportunity Council	6	9	15	5%
NeighborWorks Housing Solutions	27	20	47	14%
Lynn Housing Authority	11	5	16	5%
Central MA Housing Alliance	4	2	6	2%

HomeBASE Diversion by Region		Jul	Aug	FY21 YTD #	FY21 YTD%
Total		16	21	37	100%
Berkshire Housing		0	0	0	0%
Community Teamwork, Inc.		3	10	13	35%
Franklin County		0	0	0	0%
Housing Assistance Corp.		3	0	3	8%
Way Finders		1	4	5	14%
Metro Housing Boston		1	0	1	3%
RCAP Solutions		0	0	0	0%
South Middlesex Opportunity Council		0	0	0	0%
NeighborWorks Housing Solutions		6	7	13	35%
Lynn Housing Authority		2	0	2	5%
Central MA Housing Alliance		0	0	0	0%
HomeBASE Shelter Exits by Region					
Total		144	145	289	100%
Berkshire Housing		3	4	7	2%
Community Teamwork, Inc.		4	13	17	6%
Franklin County		0	0	0	0%
Housing Assistance Corp.		1	1	2	1%
Way Finders		23	21	44	15%
Metro Housing Boston		70	74	144	50%
RCAP Solutions		3	3	6	2%
South Middlesex Opportunity Council		6	9	15	5%
NeighborWorks Housing Solutions		21	13	34	12%
Lynn Housing Authority		9	5	14	5%
Central MA Housing Alliance		4	2	6	2%
HomeBASE Hotel Exits by Region					
Total		0	0	0	
Berkshire Housing		0	0	0	
Community Teamwork, Inc.		0	0	0	
Franklin County		0	0	0	
Housing Assistance Corp.		0	0	0	
Way Finders		0	0	0	
Metro Housing Boston		0	0	0	
RCAP Solutions		0	0	0	
South Middlesex Opportunity Council		0	0	0	
NeighborWorks Housing Solutions		0	0	0	
Lynn Housing Authority		0	0	0	
Central MA Housing Alliance		0	0	0	

RAFT	Jul	Aug	FY21 YTD #	FY21 YTD%
Total Applying	843	1,136	1,979	
Total Approved	791	905	1,696	100%
Upstream rent arrears-public/subsidized	21	48	69	4%
Upstream rent arrears-market rent	102	103	205	12%
Upstream mortgage arrears	15	7	22	1%
Doubled up and asked to leave	57	52	109	6%
Domestic violence	3	10	13	1%
Eviction-public/subsidized	104	115	219	13%
Eviction-market rent	398	437	835	49%
Foreclosure	27	28	55	3%
Fire/flood/natural disaster	4	4	8	<1%
Health/safety	21	42	63	4%
Overcrowding	2	0	2	<1%
Utility shutoff	18	28	46	3%
Other	19	16	35	2%
COVID-inability to pay future market rent	0	14	14	1%
COVID-inability to pay future mortgage	0	1	1	<1%