

DHCD EA Monthly Report, Statewide Summary

December 2019

EA Applications and Placements

EA Applications	Dec-19	Nov-19	FY20 YTD
Families Applying for EA	562	527	3,674
Health & Safety Assessments Completed*	185	194	1,331
Families with Health & Safety Risk	158	163	1,143
Families Entering EA (Shelter, Motels, and HomeBASE)	338	357	2,199
Placement-to-Application Ratio	60%	68%	60%

Notes:

Families submitting more than one application during a month were counted once.

Families entering EA includes families entering shelter or hotels/motels and families diverted from shelter or hotels/motels into HomeBASE at the front door.

EA Placements	Dec-19		Nov-19		FY20 YTD	
	Number	Percent	Number	Percent	Number	Percent
Total Entering EA or HomeBASE	338	100%	357	100%	2,199	100%
Entering EA Shelter/Motels	269	80%	283	79%	1,774	81%
Presumptive Placements	45	13%	55	15%	321	15%
Shelters	269	80%	281	79%	1,768	80%
Motels	0	0%	2	1%	6	<1%
HomeBASE Diversions (Front Door)	69	20%	74	21%	425	19%

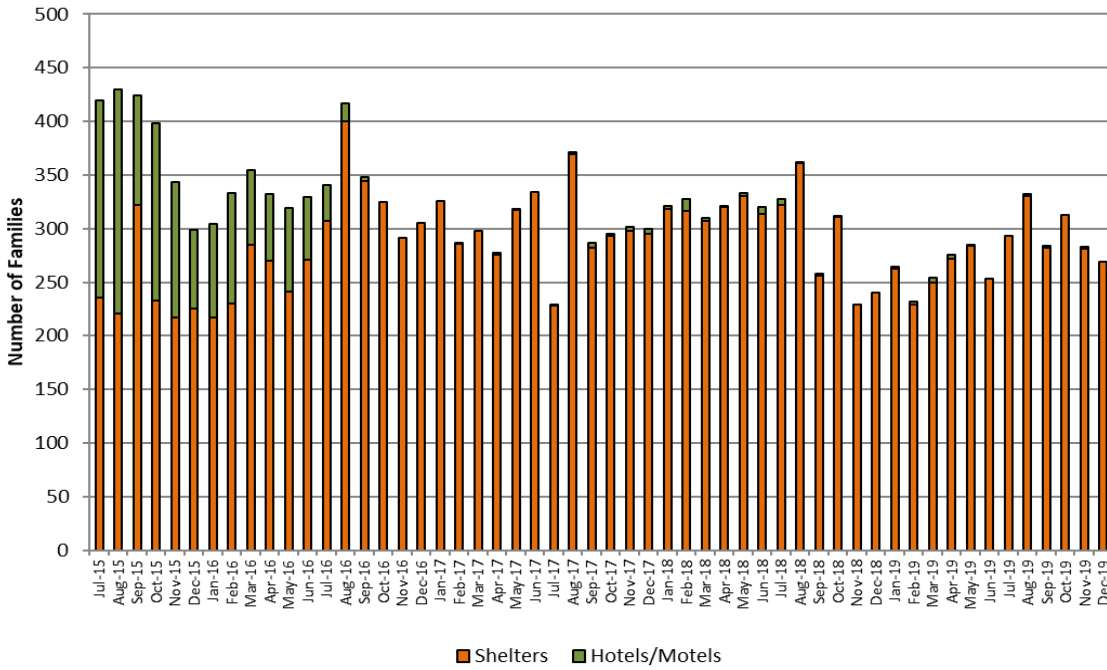
EA Shelter/Motels Placements, Reasons for Homelessness

	Dec-19		Nov-19		FY20 YTD	
	Number	Percent	Number	Percent	Number	Percent
Total	269	100%	283	100%	1,774	100%
Domestic Violence	44	17%	49	17%	301	17%
Fire/Natural Disaster	2	1%	3	1%	11	1%
Evict: Condemnation	3	1%	1	<1%	18	1%
Evict: Excused Conduct	0	0%	0	0%	11	1%
Evict: Foreclosure	1	<1%	0	0%	7	1%
Evict: Non Payment - Medical	0	0%	0	0%	2	1%
Evict: Non Payment - Disability	0	0%	0	0%	5	1%
Evict: Non Payment - Income Loss	23	7%	19	7%	156	9%
Evict: Non Renewal of Tenancy	3	2%	7	2%	21	1%
Threatened Evict - Unauthorized Tenant	23	7%	20	7%	93	5%
H&S: Violent Conduct	4	2%	7	2%	38	2%
H&S: Mental Illness	4	1%	2	1%	18	1%
H&S: Substance Abuse	0	0%	0	0%	3	1%
H&S: Conditions in Unit	11	2%	5	2%	30	2%
H&S: Irregular Housing situation	95	40%	114	40%	722	41%
H&S: Not Meant for Human Habitation	47	14%	41	14%	264	15%
TESI or Aid Pending	9	3%	15	5%	74	4%

Note: Families whose HomeBASE rental assistance benefit ended during the month may be placed in later months.

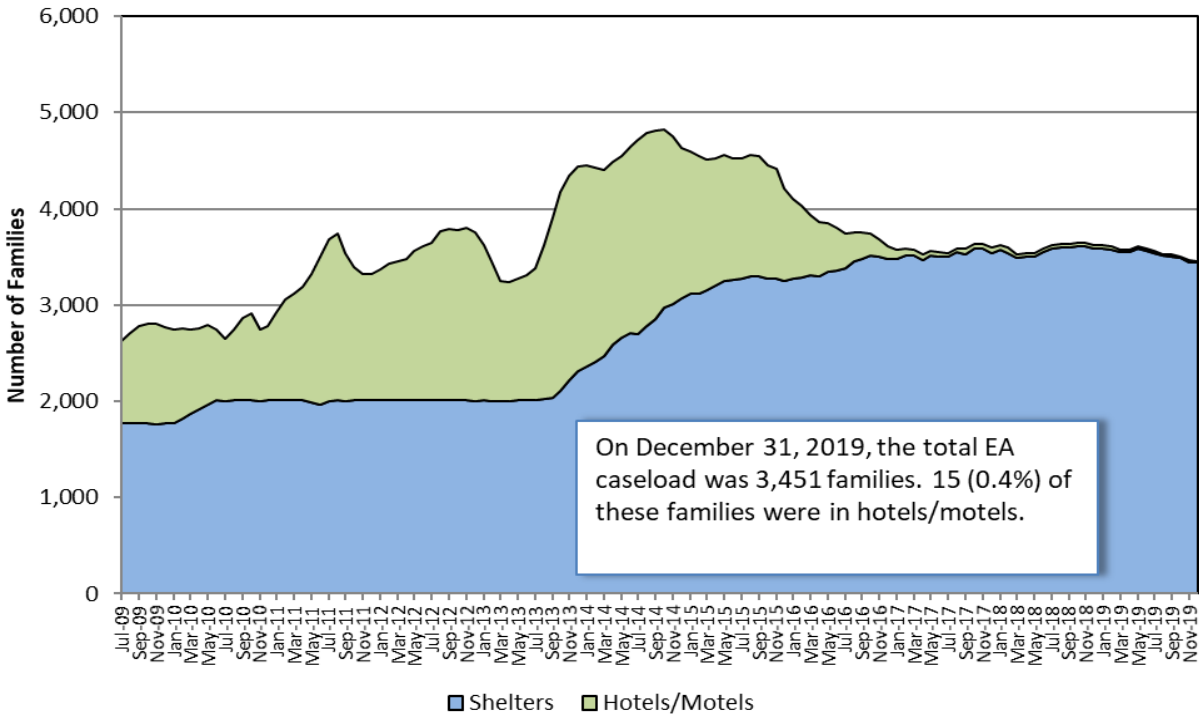
Sources: EA Daily Entry Reports and ASIST.

EA Shelter and Hotel/Motel Placements



EA Caseload

Average Daily EA Shelter & Hotel/Motel Caseload, Jul. 2009 - Dec. 2019



Note: Methodology for calculating shelter caseload changed in FY15 from an average daily number of contracted units (minus vacancies) to an end-of-the-month count of occupied shelter units using DHCD's bed registry.

Children Served

Age Range	Dec-19		Nov-19		FY20 Monthly Average	
	# Children	% Children	Number	Percent	Number	Percent
Total	6,893	100%	6,940	100%	6,992	100%
0-2 yrs.	1,473	21%	1,482	21%	1,517	22%
3-4 yrs.	957	14%	969	14%	979	14%
5-8 yrs.	1,579	23%	1,590	23%	1,609	23%
9-11 yrs.	1,022	15%	1,033	15%	1,040	15%
12-14 yrs.	888	13%	884	13%	862	12%
15-18 yrs.	787	11%	797	11%	806	12%
19-20 yrs.	187	3%	185	3%	181	3%

Note: Data indicate children active in EA shelters or hotels at end of the month.

EA Exits

Families Exiting Shelter and Hotels/Motels	Dec-19		Nov-19		FY20 YTD	
	Number	Percent	Number	Percent	Number	Percent
Total Exits	273	100%	308	100%	1,807	100%
Abandoned	22	8%	40	13%	204	11%
Criminal Activity	0	0%	0	0%	2	<1%
Feasible Alternative Housing with HB	193	71%	212	69%	1,180	65%
Feasible Alternative Housing without HB	35	13%	34	11%	198	11%
Ineligible	5	2%	3	1%	30	2%
Rejected Placement	1	<1%	1	0%	8	<1%
NonCompliance	1	<1%	2	1%	15	1%
Temporary Shelter Interruption	16	6%	11	4%	119	7%
Other/Unknown	0	0%	5	2%	51	3%

Notes:

Families terminated from shelter for abandoning their placements or non-compliance may return to the system pending an appeal.
 Families receiving a Temporary Shelter Interruption may return to the system within 30 days.

Types of Subsidies	Dec-19		Nov-19		FY20 YTD	
	Number	Percent	Number	Percent	Number	Percent
Total Families Receiving Subsidies	213	100%	232	100%	1,305	100%
ESG	1	<1%	0	0%	5	<1%
HomeBASE	193	91%	212	91%	1,180	90%
HUD CoC	9	4%	13	6%	46	4%
MRVP	8	4%	7	3%	36	3%
Private Subsidized Housing	10	5%	10	4%	61	5%
Section 8 Mobile Voucher	84	39%	90	39%	508	39%
Section 8 Project-Based Voucher	10	5%	14	6%	62	5%
Other Public Housing	13	6%	15	6%	93	7%
Transportation	1	<1%	1	<1%	11	1%

Notes:

Families may receive multiple subsidy types. Therefore, the sum of the subsidy types do not equal the number of families.
 Data based on date of shelter/hotel exit. HomeBASE data based on the date that checks are issued may vary.

RAFT - Homelessness Prevention

RAFT	Dec-19		Nov-19		YTD 20 YTD	
	Number	Percent	Number	Percent	Number	Percent
Total Applying	594		725		4,212	
Total Approved	560	100%	683	100%	3,909	100%
Upstream rent arrears-public/subsidized	27	5%	31	5%	184	5%
Upstream rent arrears-market rent	65	12%	70	10%	383	10%
Upstream mortgage arrears	5	1%	5	1%	31	1%
Doubled up and asked to leave	185	33%	206	30%	1,128	29%
Domestic violence	14	3%	10	1%	80	2%
Eviction-public/subsidized	64	11%	83	12%	442	11%
Eviction-market rent	120	21%	160	23%	822	21%
Foreclosure	4	1%	9	1%	51	1%
Fire/flood/natural disaster	0	0%	0	0%	27	1%
Health/safety	31	6%	34	5%	216	6%

**DHCD - EA Monthly Report
December 2019**

	Dec #	Dec %	Nov #	YTD #	YTD %
Families Applying for EA					
Total	562	100%	527	3,674	100%
Boston	108	19%	123	834	23%
Central Mass	65	12%	55	346	9%
North Shore	170	30%	149	1,044	28%
South Shore	85	15%	67	532	14%
Western Mass	134	24%	133	918	25%
Families Placed in EA Shelter and Hotels/Motels					
Total	269	100%	283	1,774	100%
Boston	84	31%	104	611	34%
Central Mass	26	10%	31	182	10%
North Shore	55	20%	50	343	19%
South Shore	45	17%	48	329	19%
Western Mass	59	22%	50	309	17%
HomeBASE Entries (Diversion and Exits)					
Total	274	100%	275	1,696	100%
Berkshire Housing	3	1%	1	27	2%
Community Teamwork, Inc.	20	7%	28	156	9%
Franklin County	1	0%	2	11	<1%
Housing Assistance Corp.	0	0%	3	20	1%
Way Finders	66	24%	70	377	22%
Metro Housing Boston	93	34%	72	530	31%
RCAP Solutions	10	4%	11	49	3%
South Middlesex Opportunity Council	12	4%	5	62	4%
NeighborWorks Housing Solutions	51	19%	58	313	18%
Lynn Housing Authority	7	3%	11	75	4%
Central MA Housing Alliance	11	4%	14	76	4%

Notes

Average Daily Number of Families in Hotels is calculated as the average across weekly point-in-time estimates from the reported month; Hotel region indicates region of originating eligibility office.

Totals may not equal the sum or regions due to rounding.

Sources: EA Daily Entry Report, ASIST, and EA Weekly Motel Reports.

DHCD - EA Monthly Report, Cumulative Data
December 2019

Families Applying for EA	Jul	Aug	Sept	Oct	Nov	Dec	YTD #	YTD %
Total Families Applying	648	636	623	678	527	562	3,674	100%
Boston	144	153	162	144	123	108	834	23%
Central Mass	58	61	54	53	55	65	346	9%
North Shore	171	165	187	202	149	170	1,044	28%
South Shore	101	99	75	105	67	85	532	14%
Western Mass	174	158	145	174	133	134	918	25%
Health & Safety Assessment								
H&S Assessment Completed	207	251	226	268	194	185	1,331	100%
Families with H&S Risk	177	211	192	242	163	158	1,143	86%
Families Placed in Shelter/Motels								
Total	293	332	284	313	283	269	1,774	100%
Families Placed in Hotels/Motels	0	2	2	0	2	0	6	<1%
Presumptive Placement	50	66	47	58	55	45	321	18%
Boston	92	96	104	131	104	84	611	34%
Central Mass	38	35	23	29	31	26	182	10%
North Shore	63	72	54	49	50	55	343	19%
South Shore	56	76	52	52	48	45	329	19%
Western Mass	44	53	51	52	50	59	309	17%
Monthly Caseload (# of Families)	7/31/2019	08/31/19	09/30/19	10/31/19	11/30/19	12/31/19	YTD Average	
Total	3,557	3,527	3,521	3,504	3,460	3,451	3,503	
Shelter	3,540	3,509	3,504	3,487	3,442	3,436	3,486	
Hotel/Motel	17	18	17	17	18	15	17	
Children Served								
Total	7,065	7,016	7,022	7,017	6,940	6,893	6,992	100%
0-2 yrs.	1,577	1,538	1,510	1,520	1,482	1,473	1,517	22%
3-4 yrs.	1,016	996	966	967	969	957	979	14%
5-8 yrs.	1,611	1,617	1,634	1,625	1,590	1,579	1,609	23%
9-11 yrs.	1,048	1,045	1,052	1,037	1,033	1,022	1,040	15%
12-14 yrs.	824	843	859	873	884	888	862	12%
15-18 yrs.	811	799	822	818	797	787	806	12%
19-20 yrs.	178	178	179	177	185	187	181	3%

	Jul	Aug	Sept	Oct	Nov	Dec	YTD #	YTD %
Placement to Application Ratio	54%	64%	58%	58%	68%	60%	60%	
Reasons for Homelessness, Shelter/Motels								
Total Placements	293	332	284	313	283	269	1,774	100%
Domestic Violence	46	61	50	51	49	44	301	17%
Fire/Natural Disaster	3	0	2	1	3	2	11	1%
Evict: Condemnation	7	2	3	2	1	3	18	1%
Evict: Excused Conduct	2	7	1	1	0	0	11	1%
Evict: Foreclosure	0	2	1	3	0	1	7	<1%
Evict: Non Payment - Medical	0	0	1	1	0	0	2	<1%
Evict: Non Payment - Disability	1	3	1	0	0	0	5	<1%
Evict: Non Payment - Income Loss	22	29	29	34	19	23	156	9%
Evict: Non Renewal of Tenancy	1	1	0	9	7	3	21	1%
Threatened Evict - Unauthorized Tenant	7	10	9	24	20	23	93	5%
H&S: Violent Conduct	3	9	3	12	7	4	38	2%
H&S: Mental Illness	2	4	4	2	2	4	18	1%
H&S: Substance Abuse	0	0	1	2	0	0	3	<1%
H&S: Conditions in Unit	2	3	4	5	5	11	30	2%
H&S: Irregular Housing situation	138	137	119	119	114	95	722	41%
H&S: Not Meant for Human Habitation	42	45	47	42	41	47	264	15%
Aid Pending	6	11	2	1	7	4	31	2%
Replacement/TESI	11	8	7	4	8	5	43	2%
Shelter and Hotel/Motel Exits								
Total	298	336	283	309	308	273	1,807	100%
Abandoned	37	45	34	26	40	22	204	11%
Criminal Activity/Fraud	0	0	1	1	0	0	2	<1%
Feasible Alternative Housing with HB	177	205	178	215	212	193	1,180	65%
Feasible Alternative Housing without HB	27	40	30	32	34	35	198	11%
Ineligible	4	5	5	8	3	5	30	2%
No Show/Rejected Placement	1	1	2	2	1	1	8	<1%
NonCompliance/Termination for Cause	3	4	1	4	2	1	15	1%
Temporary Shelter Interruption	28	26	18	20	11	16	119	7%
Other/Unknown	21	10	14	1	5	0	51	3%

Hotel/Motel Exits	Jul	Aug	Sept	Oct	Nov	Dec	YTD #	YTD %
Total Exits	1	1	2	2	1	1	8	100%
Abandoned	0	0	0	2	0	0	2	25%
Criminal Activity	0	0	0	0	0	0	0	0%
Feasible Alternative Housing with HB	1	1	2	0	1	1	6	75%
Feasible Alternative Housing without HB	0	0	0	0	0	0	0	0%
Ineligible	0	0	0	0	0	0	0	0%
No Show/Rejected Placement	0	0	0	0	0	0	0	0%
NonCompliance/Termination for Cause	0	0	0	0	0	0	0	0%
Temporary Shelter Interruption	0	0	0	0	0	0	0	0%
Other/Unknown	0	0	0	0	0	0	0	0%
Types of Subsidies at Exit								
Total Families Receiving Subsidies	205	227	196	232	232	213	1,305	100%
ESG	2	1	1	0	0	1	5	<1%
HomeBASE	177	205	178	215	212	193	1,180	90%
HUD CoC	5	10	1	8	13	9	46	4%
MRVP	5	10	1	5	7	8	36	3%
Private Subsidized Housing	8	11	9	13	10	10	61	5%
Section 8 Mobile Voucher	66	87	88	93	90	84	508	39%
Section 8 Project-Based Voucher	10	9	4	15	14	10	62	5%
Other Public Housing	13	20	14	18	15	13	93	7%
Transportation	1	5	1	2	1	1	11	1%
HomeBASE Entries (Diversion and Exits)								
Total	267	317	241	322	275	274	1,696	100%
Berkshire Housing	11	3	3	6	1	3	27	2%
Community Teamwork, Inc.	15	37	32	24	28	20	156	9%
Franklin County	1	2	4	1	2	1	11	<1%
Housing Assistance Corp.	1	5	4	7	3	0	20	1%
Way Finders	59	64	53	65	70	66	377	22%
Metro Housing Boston	85	105	54	121	72	93	530	31%
RCAP Solutions	8	7	3	10	11	10	49	3%
South Middlesex Opportunity Council	10	16	9	10	5	12	62	4%
NeighborWorks Housing Solutions	49	50	54	51	58	51	313	18%
Lynn Housing Authority	12	15	16	14	11	7	75	4%
Central MA Housing Alliance	17	13	8	13	14	11	76	4%

RAFT	Jul	Aug	Sept	Oct	Nov	Dec	YTD #	YTD %
Total Applying	560	727	657	949	725	594	4,212	
Total Approved	468	690	636	872	683	560	3,909	100%
Upstream rent arrears-public/subsidized	14	40	33	39	31	27	184	5%
Upstream rent arrears-market rent	17	60	75	96	70	65	383	10%
Upstream mortgage arrears	2	4	8	7	5	5	31	1%
Doubled up and asked to leave	154	175	178	230	206	185	1,128	29%
Domestic violence	14	10	6	26	10	14	80	2%
Eviction-public/subsidized	31	86	67	111	83	64	442	11%
Eviction-market rent	100	151	144	147	160	120	822	21%
Foreclosure	12	7	12	7	9	4	51	1%
Fire/flood/natural disaster	6	7	4	10	0	0	27	1%
Health/safety	45	31	29	46	34	31	216	6%
Overcrowding	9	10	4	9	10	4	46	1%
Utility shutoff	45	73	49	93	40	20	320	8%
Other	19	36	27	51	25	21	179	5%