

# DHCD EA Monthly Report, Statewide Summary

## July 2019

### EA Applications and Placements

| EA Applications                                      | Jul-19 | Jun-19 | FY20 YTD |
|--|--------|--------|----------|
| Families Applying for EA                             | 648    | 536    | 648      |
| Health & Safety Assessments Completed*               | 207    | 213    | 207      |
| Families with Health & Safety Risk                   | 177    | 179    | 177      |
| Families Entering EA (Shelter, Motels, and HomeBASE) | 350    | 323    | 350      |
| Placement-to-Application Ratio                       | 54%    | 60%    | 54%      |

**Notes:**

Families submitting more than one application during a month were counted once.

Families entering EA includes families entering shelter or hotels/motels and families diverted from shelter or hotels/motels into HomeBASE at the front door.

| EA Placements                    | Jul-19 |         | Jun-19 |         | FY20 YTD |         |
|----------------------------------|--------|---------|--------|---------|----------|---------|
|                                  | Number | Percent | Number | Percent | Number   | Percent |
| Total Entering EA or HomeBASE    | 350    | 100%    | 323    | 100%    | 350      | 100%    |
| Entering EA Shelter/Motels       | 293    | 84%     | 253    | 78%     | 293      | 84%     |
| Presumptive Placements           | 50     | 14%     | 31     | 10%     | 50       | 14%     |
| Shelters                         | 293    | 84%     | 253    | 78%     | 293      | 84%     |
| Motels                           | 0      | 0%      | 0      | 0%      | 0        | 0%      |
| HomeBASE Diversions (Front Door) | 57     | 16%     | 70     | 22%     | 57       | 16%     |

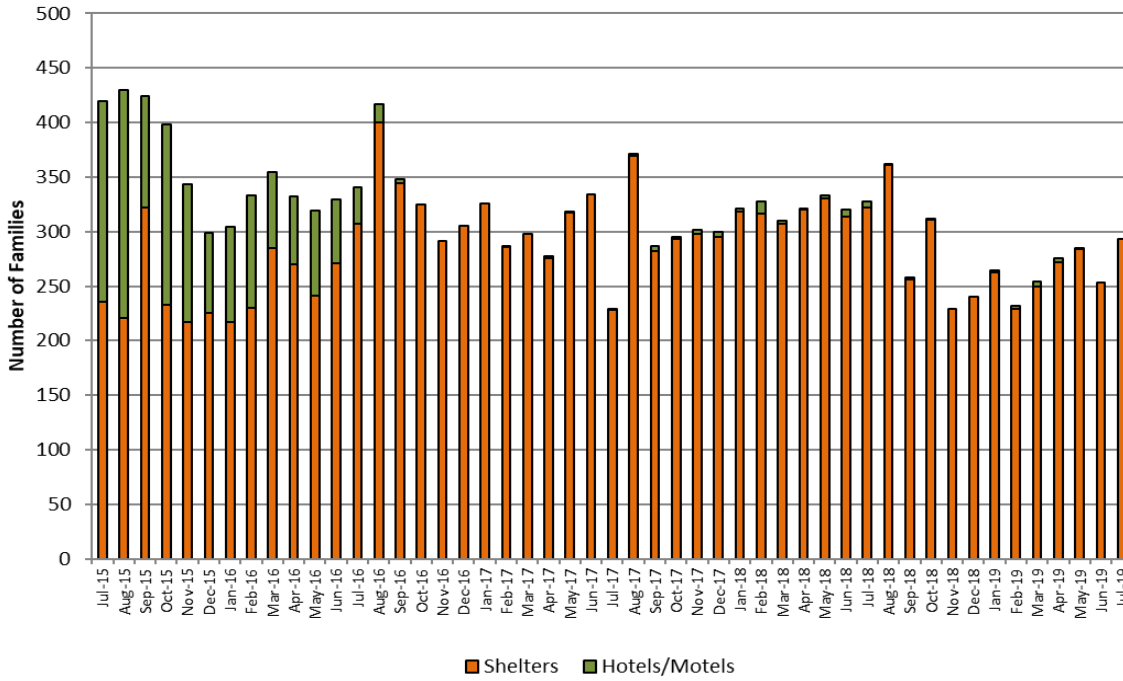
### EA Shelter/Motels Placements, Reasons for Homelessness

|  | Jul-19     |             | Jun-19     |             | FY20 YTD   |             |
|--|------------|-------------|------------|-------------|------------|-------------|
|  | Number     | Percent     | Number     | Percent     | Number     | Percent     |
| <b>Total</b>                           | <b>293</b> | <b>100%</b> | <b>253</b> | <b>100%</b> | <b>293</b> | <b>100%</b> |
| Domestic Violence                      | 46         | 16%         | 38         | 15%         | 46         | 16%         |
| Fire/Natural Disaster                  | 3          | 1%          | 0          | 0%          | 3          | 1%          |
| Evict: Condemnation                    | 7          | 2%          | 4          | 2%          | 7          | 2%          |
| Evict: Excused Conduct                 | 2          | 1%          | 2          | 1%          | 2          | 1%          |
| Evict: Foreclosure                     | 0          | 0%          | 1          | <1%         | 0          | 0%          |
| Evict: Non Payment - Medical           | 0          | 0%          | 1          | <1%         | 0          | 0%          |
| Evict: Non Payment - Disability        | 1          | <1%         | 1          | <1%         | 1          | <1%         |
| Evict: Non Payment - Income Loss       | 22         | 8%          | 16         | 6%          | 22         | 8%          |
| Evict: Non Renewal of Tenancy          | 1          | <1%         | 0          | 0%          | 1          | <1%         |
| Threatened Evict - Unauthorized Tenant | 7          | 2%          | 10         | 4%          | 7          | 2%          |
| H&S: Violent Conduct                   | 3          | 1%          | 4          | 2%          | 3          | 1%          |
| H&S: Mental Illness                    | 2          | 1%          | 4          | 2%          | 2          | 1%          |
| H&S: Substance Abuse                   | 0          | 0%          | 3          | 1%          | 0          | 0%          |
| H&S: Conditions in Unit                | 2          | 1%          | 4          | 2%          | 2          | 1%          |
| H&S: Irregular Housing situation       | 138        | 47%         | 104        | 41%         | 138        | 47%         |
| H&S: Not Meant for Human Habitation    | 42         | 14%         | 46         | 18%         | 42         | 14%         |
| TESI or Aid Pending                    | 17         | 6%          | 15         | 6%          | 17         | 6%          |

**Note:** Families whose HomeBASE rental assistance benefit ended during the month may be placed in later months.

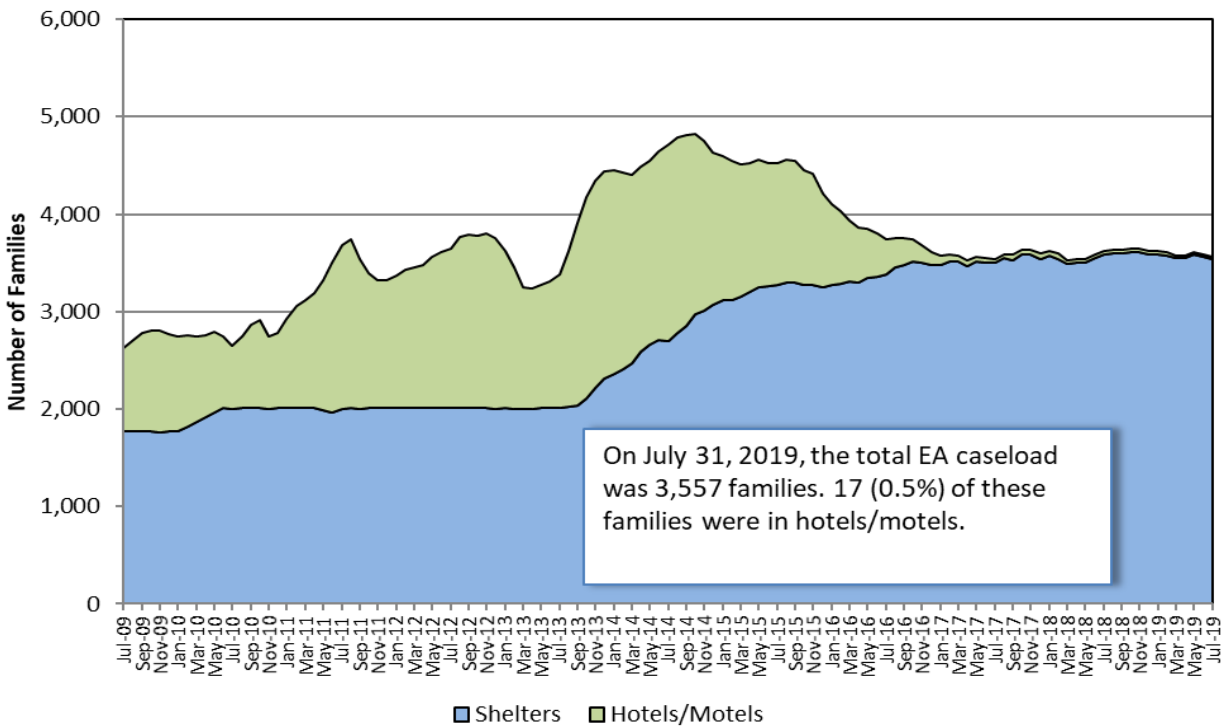
**Sources:** EA Daily Entry Reports and ASIST.

### EA Shelter and Hotel/Motel Placements



### EA Caseload

#### Average Daily EA Shelter & Hotel/Motel Caseload, Jul. 2009- Jul. 2019



**Note:** Methodology for calculating shelter caseload changed in FY15 from an average daily number of contracted units (minus vacancies) to an end-of-the-month count of occupied shelter units using DHCD's bed registry.

## Children Served

| Age Range    | Jul-19       |             |
|--------------|--------------|-------------|
|              | # Children   | % Children  |
| <b>Total</b> | <b>7,015</b> | <b>100%</b> |
| 0-2 yrs.     | 1,526        | 22%         |
| 3-4 yrs.     | 1,016        | 14%         |
| 5-8 yrs.     | 1,632        | 23%         |
| 9-11 yrs.    | 1,037        | 15%         |
| 12-14 yrs.   | 823          | 12%         |
| 15-18 yrs.   | 813          | 12%         |
| 19-21 yrs.   | 168          | 2%          |

**Note:** Data indicate children in an EA shelter or hotel for any period during the month.

## EA Exits

| Families Exiting Shelter and Hotels/Motels | Jul-19     |             | Jun-19     |             | FY20 YTD   |             |
|--|------------|-------------|------------|-------------|------------|-------------|
|  | Number     | Percent     | Number     | Percent     | Number     | Percent     |
| <b>Total Exits</b>                         | <b>298</b> | <b>100%</b> | <b>252</b> | <b>100%</b> | <b>298</b> | <b>100%</b> |
| Abandoned                                  | 37         | 12%         | 34         | 13%         | 37         | 12%         |
| Criminal Activity                          | 0          | 0%          | 0          | 0%          | 0          | 0%          |
| Feasible Alternative Housing with HB       | 177        | 59%         | 163        | 65%         | 177        | 59%         |
| Feasible Alternative Housing without HB    | 27         | 9%          | 18         | 7%          | 27         | 9%          |
| Ineligible                                 | 4          | 1%          | 5          | 2%          | 4          | 1%          |
| Rejected Placement                         | 1          | <1%         | 0          | 0%          | 1          | <1%         |
| NonCompliance                              | 3          | 1%          | 2          | 1%          | 3          | 1%          |
| Temporary Shelter Interruption             | 28         | 9%          | 21         | 8%          | 28         | 9%          |
| Other/Unknown                              | 21         | 7%          | 9          | 4%          | 21         | 7%          |

**Notes:**

Families terminated from shelter for abandoning their placements or non-compliance may return to the system pending an appeal.  
 Families receiving a Temporary Shelter Interruption may return to the system within 30 days.

| Types of Subsidies                        | Jul-19     |             | Jun-19     |             | FY20 YTD   |             |
|---|------------|-------------|------------|-------------|------------|-------------|
|   | Number     | Percent     | Number     | Percent     | Number     | Percent     |
| <b>Total Families Receiving Subsidies</b> | <b>205</b> | <b>100%</b> | <b>175</b> | <b>100%</b> | <b>205</b> | <b>100%</b> |
| ESG                                       | 2          | 1%          | 3          | 2%          | 2          | 1%          |
| HomeBASE                                  | 177        | 86%         | 163        | 93%         | 177        | 86%         |
| HUD CoC                                   | 5          | 2%          | 6          | 3%          | 5          | 2%          |
| MRVP                                      | 5          | 2%          | 7          | 4%          | 5          | 2%          |
| Private Subsidized Housing                | 8          | 4%          | 7          | 4%          | 8          | 4%          |
| Section 8 Mobile Voucher                  | 66         | 32%         | 37         | 21%         | 66         | 32%         |
| Section 8 Project-Based Voucher           | 10         | 5%          | 8          | 5%          | 10         | 5%          |
| Other Public Housing                      | 13         | 6%          | 13         | 7%          | 13         | 6%          |
| Transportation                            | 1          | <1%         | 5          | 3%          | 1          | <1%         |

**Notes:**

Families may receive multiple subsidy types. Therefore, the sum of the subsidy types do not equal the number of families.  
 Data based on date of shelter/hotel exit. HomeBASE data based on the date that checks are issued may vary.

## RAFT - Homelessness Prevention

| RAFT                                    | Jul-19     |         | Jun-19     |         | YTD 20 YTD |         |
|---|------------|---------|------------|---------|------------|---------|
|   | Number     | Percent | Number     | Percent | Number     | Percent |
| <b>Total Applying</b>                   | <b>560</b> |         | <b>412</b> |         | <b>560</b> |         |
| Total Approved                          | 468        | 100%    | 322        | 100%    | 468        | 100%    |
| Upstream rent arrears-public/subsidized | 14         | 3%      | 0          | 0%      | 14         | 3%      |
| Upstream rent arrears-market rent       | 17         | 4%      | 0          | 0%      | 17         | 4%      |
| Upstream mortgage arrears               | 2          | <1%     | 0          | 0%      | 2          | <1%     |
| Doubled up and asked to leave           | 154        | 33%     | 73         | 23%     | 154        | 33%     |
| Domestic violence                       | 14         | 3%      | 11         | 3%      | 14         | 3%      |
| Eviction-public/subsidized              | 31         | 7%      | 60         | 19%     | 31         | 7%      |
| Eviction-market rent                    | 100        | 21%     | 57         | 18%     | 100        | 21%     |
| Foreclosure                             | 12         | 3%      | 7          | 2%      | 12         | 3%      |
| Fire/flood/natural disaster             | 6          | 1%      | 9          | 3%      | 6          | 1%      |
| Health/safety                           | 45         | 10%     | 14         | 4%      | 45         | 10%     |

**DHCD - EA Monthly Report  
July 2019**

|  | Jul #      | Jul %       | Jun #      | YTD #      | YTD %       |
|--|------------|-------------|------------|------------|-------------|
| <b>Families Applying for EA</b>                        |            |             |            |            |             |
| <b>Total</b>   | <b>648</b> | <b>100%</b> | <b>536</b> | <b>648</b> | <b>100%</b> |
| Boston   | 144        | 22%         | 124        | 144        | 22%         |
| Central Mass   | 58         | 9%          | 45         | 58         | 9%          |
| North Shore  | 171        | 26%         | 153        | 171        | 26%         |
| South Shore  | 101        | 16%         | 80         | 101        | 16%         |
| Western Mass   | 174        | 27%         | 134        | 174        | 27%         |
| <b>Families Placed in EA Shelter and Hotels/Motels</b> |            |             |            |            |             |
| <b>Total</b>   | <b>293</b> | <b>100%</b> | <b>253</b> | <b>293</b> | <b>100%</b> |
| Boston   | 92         | 31%         | 88         | 92         | 31%         |
| Central Mass   | 38         | 13%         | 23         | 38         | 13%         |
| North Shore  | 63         | 22%         | 56         | 63         | 22%         |
| South Shore  | 56         | 19%         | 40         | 56         | 19%         |
| Western Mass   | 44         | 15%         | 46         | 44         | 15%         |
| <b>HomeBASE Entries (Diversion and Exits)</b>          |            |             |            |            |             |
| <b>Total</b>   | <b>263</b> | <b>100%</b> | <b>234</b> | <b>263</b> | <b>100%</b> |
| Berkshire Housing                                      | 10         | 4%          | 3          | 10         | 4%          |
| Community Teamwork, Inc.                               | 11         | 4%          | 25         | 11         | 4%          |
| Franklin County  | 1          | <1%         | 3          | 1          | <1%         |
| Housing Assistance Corp.                               | 2          | 1%          | 5          | 2          | 1%          |
| Way Finders  | 58         | 22%         | 47         | 58         | 22%         |
| Metro Housing Boston                                   | 85         | 32%         | 52         | 85         | 32%         |
| RCAP Solutions   | 8          | 3%          | 9          | 8          | 3%          |
| South Middlesex Opportunity Council                    | 10         | 4%          | 7          | 10         | 4%          |
| NeighborWorks Housing Solutions                        | 50         | 19%         | 56         | 50         | 19%         |
| Lynn Housing Authority                                 | 12         | 5%          | 18         | 12         | 5%          |
| Central MA Housing Alliance                            | 16         | 6%          | 9          | 16         | 6%          |

**Notes**

Average Daily Number of Families in Hotels is calculated as the average across weekly point-in-time estimates from the reported month; Hotel region indicates region of originating eligibility office.

Totals may not equal the sum or regions due to rounding.

**Sources:** EA Daily Entry Report, ASIST, and EA Weekly Motel Reports.

**DHCD - EA Monthly Report, Cumulative Data  
July 2019**

|  | Current Month   |             | YTD #                  | YTD %       |
|--|-----------------|-------------|------------------------|-------------|
|  | Jul #           | Jul %       |                        |             |
| <b>Families Applying for EA</b>          | <b>648</b>      | <b>100%</b> | <b>648</b>             | <b>100%</b> |
| Boston                                   | 144             | 22%         | 144                    | 22%         |
| Central Mass                             | 58              | 9%          | 58                     | 9%          |
| North Shore                              | 171             | 26%         | 171                    | 26%         |
| South Shore                              | 101             | 16%         | 101                    | 16%         |
| Western Mass                             | 174             | 27%         | 174                    | 27%         |
| <b>Health &amp; Safety Assessment</b>    |                 |             |                        |             |
| <b>H&amp;S Assessment Completed</b>      | <b>207</b>      | <b>100%</b> | <b>207</b>             | <b>100%</b> |
| Families with H&S Risk                   | 177             | 86%         | 177                    | 86%         |
| <b>Families Placed in Shelter/Motels</b> |                 |             |                        |             |
| <b>Total</b>                             | <b>293</b>      | <b>100%</b> | <b>293</b>             | <b>100%</b> |
| Families Placed in Hotels/Motels         | 0               | 0%          | 0                      | 0%          |
| Presumptive Placement                    | 50              | 17%         | 50                     | 17%         |
| Boston                                   | 92              | 31%         | 92                     | 31%         |
| Central Mass                             | 38              | 13%         | 38                     | 13%         |
| North Shore                              | 63              | 22%         | 63                     | 22%         |
| South Shore                              | 56              | 19%         | 56                     | 19%         |
| Western Mass                             | 44              | 15%         | 44                     | 15%         |
| <b>Monthly Caseload (# of Families)</b>  | <b>07/31/19</b> |             | <b>YTD<br/>Average</b> |             |
| <b>Total</b>                             | <b>3,557</b>    |             | <b>3,557</b>           |             |
| Shelter                                  | 3,540           |             | 3,540                  |             |
| Hotel/Motel                              | 17              |             | 17                     |             |
| <b>Children Served</b>                   |                 |             |                        |             |
| <b>Total</b>                             | <b>7,015</b>    | <b>100%</b> | <b>7,015</b>           | <b>100%</b> |
| 0-2 yrs.                                 | 1,526           | 22%         | 1,526                  | 22%         |
| 3-4 yrs.                                 | 1,016           | 14%         | 1,016                  | 14%         |
| 5-8 yrs.                                 | 1,632           | 23%         | 1,632                  | 23%         |
| 9-11 yrs.                                | 1,037           | 15%         | 1,037                  | 15%         |
| 12-14 yrs.                               | 823             | 12%         | 823                    | 12%         |
| 15-18 yrs.                               | 813             | 12%         | 813                    | 12%         |
| 19-21 yrs.                               | 168             | 2%          | 168                    | 2%          |

|   | Current Month |             | YTD #      | YTD %       |
|---|---------------|-------------|------------|-------------|
|   | Jul #         | Jul %       |            |             |
| <b>Placement to Application Ratio</b>           | <b>54%</b>    |             | <b>54%</b> |             |
| <b>Reasons for Homelessness, Shelter/Motels</b> |               |             |            |             |
| <b>Total</b>                                    | <b>293</b>    | <b>100%</b> | <b>293</b> | <b>100%</b> |
| Domestic Violence                               | 46            | 16%         | 46         | 16%         |
| Fire/Natural Disaster                           | 3             | 1%          | 3          | 1%          |
| Evict: Condemnation                             | 7             | 2%          | 7          | 2%          |
| Evict: Excused Conduct                          | 2             | 1%          | 2          | 1%          |
| Evict: Foreclosure                              | 0             | 0%          | 0          | 0%          |
| Evict: Non Payment - Medical                    | 0             | 0%          | 0          | 0%          |
| Evict: Non Payment - Disability                 | 1             | <1%         | 1          | <1%         |
| Evict: Non Payment - Income Loss                | 22            | 8%          | 22         | 8%          |
| Evict: Non Renewal of Tenancy                   | 1             | <1%         | 1          | <1%         |
| Threatened Evict - Unauthorized Tenant          | 7             | 2%          | 7          | 2%          |
| H&S: Violent Conduct                            | 3             | 1%          | 3          | 1%          |
| H&S: Mental Illness                             | 2             | 1%          | 2          | 1%          |
| H&S: Substance Abuse                            | 0             | 0%          | 0          | 0%          |
| H&S: Conditions in Unit                         | 2             | 1%          | 2          | 1%          |
| H&S: Irregular Housing situation                | 138           | 47%         | 138        | 47%         |
| H&S: Not Meant for Human Habitation             | 42            | 14%         | 42         | 14%         |
| Aid Pending                                     | 6             | 2%          | 6          | 2%          |
| Replacement/TESI                                | 11            | 4%          | 11         | 4%          |
| <b>Shelter and Hotel/Motel Exits</b>            |               |             |            |             |
| <b>Total</b>                                    | <b>298</b>    | <b>100%</b> | <b>298</b> | <b>100%</b> |
| Abandoned                                       | 37            | 12%         | 37         | 12%         |
| Criminal Activity/Fraud                         | 0             | 0%          | 0          | 0%          |
| Feasible Alternative Housing with HB            | 177           | 59%         | 177        | 59%         |
| Feasible Alternative Housing without HB         | 27            | 9%          | 27         | 9%          |
| Ineligible                                      | 4             | 1%          | 4          | 1%          |
| No Show/Rejected Placement                      | 1             | <1%         | 1          | <1%         |
| NonCompliance/Termination for Cause             | 3             | 1%          | 3          | 1%          |
| Temporary Shelter Interruption                  | 28            | 9%          | 28         | 9%          |
| Other/Unknown                                   | 21            | 7%          | 21         | 7%          |

|   | Current Month |             | YTD #      | YTD %       |
|---|---------------|-------------|------------|-------------|
|   | Jul #         | Jul %       |            |             |
| <b>Hotel/Motel Exits</b>                      |               |             |            |             |
| <b>Total</b>                                  | <b>1</b>      | <b>100%</b> | <b>1</b>   | <b>100%</b> |
| Abandoned                                     | 0             | 0%          | 0          | 0%          |
| Criminal Activity                             | 0             | 0%          | 0          | 0%          |
| Feasible Alternative Housing with HB          | 1             | 100%        | 1          | 100%        |
| Feasible Alternative Housing without HB       | 0             | 0%          | 0          | 0%          |
| Ineligible                                    | 0             | 0%          | 0          | 0%          |
| No Show/Rejected Placement                    | 0             | 0%          | 0          | 0%          |
| NonCompliance/Termination for Cause           | 0             | 0%          | 0          | 0%          |
| Temporary Shelter Interruption                | 0             | 0%          | 0          | 0%          |
| Other/Unknown                                 | 0             | 0%          | 0          | 0%          |
| <b>Types of Subsidies at Exit</b>             |               |             |            |             |
| <b>Total Families Receiving Subsidies</b>     | <b>205</b>    | <b>100%</b> | <b>205</b> | <b>100%</b> |
| ESG   | 2             | 1%          | 2          | 1%          |
| HomeBASE                                      | 177           | 86%         | 177        | 86%         |
| HUD CoC                                       | 5             | 2%          | 5          | 2%          |
| MRVP  | 5             | 2%          | 5          | 2%          |
| Private Subsidized Housing                    | 8             | 4%          | 8          | 4%          |
| Section 8 Mobile Voucher                      | 66            | 32%         | 66         | 32%         |
| Section 8 Project-Based Voucher               | 10            | 5%          | 10         | 5%          |
| Other Public Housing                          | 13            | 6%          | 13         | 6%          |
| Transportation                                | 1             | <1%         | 1          | <1%         |
| <b>HomeBASE Entries (Diversion and Exits)</b> |               |             |            |             |
| <b>Total</b>                                  | <b>263</b>    | <b>100%</b> | <b>263</b> | <b>100%</b> |
| Berkshire Housing                             | 10            | 4%          | 10         | 4%          |
| Community Teamwork, Inc.                      | 11            | 4%          | 11         | 4%          |
| Franklin County                               | 1             | <1%         | 1          | <1%         |
| Housing Assistance Corp.                      | 2             | 1%          | 2          | 1%          |
| Way Finders                                   | 58            | 22%         | 58         | 22%         |
| Metro Housing Boston                          | 85            | 32%         | 85         | 32%         |
| RCAP Solutions                                | 8             | 3%          | 8          | 3%          |
| South Middlesex Opportunity Council           | 10            | 4%          | 10         | 4%          |
| NeighborWorks Housing Solutions               | 50            | 19%         | 50         | 19%         |
| Lynn Housing Authority                        | 12            | 5%          | 12         | 5%          |
| Central MA Housing Alliance                   | 16            | 6%          | 16         | 6%          |



|   | Current Month |             | YTD #      | YTD %       |
|---|---------------|-------------|------------|-------------|
|   | Jul #         | Jul %       |            |             |
| <b>HomeBASE Diversion by Region</b>     |               |             |            |             |
| <b>Total</b>                            | <b>57</b>     | <b>100%</b> | <b>57</b>  | <b>100%</b> |
| Berkshire Housing                       | 2             | 4%          | 2          | 4%          |
| Community Teamwork, Inc.                | 3             | 5%          | 3          | 5%          |
| Franklin County                         | 0             | 0%          | 0          | 0%          |
| Housing Assistance Corp.                | 0             | 0%          | 0          | 0%          |
| Way Finders                             | 19            | 33%         | 19         | 33%         |
| Metro Housing Boston                    | 3             | 5%          | 3          | 5%          |
| RCAP Solutions                          | 1             | 2%          | 1          | 2%          |
| South Middlesex Opportunity Council     | 1             | 2%          | 1          | 2%          |
| NeighborWorks Housing Solutions         | 23            | 40%         | 23         | 40%         |
| Lynn Housing Authority                  | 2             | 4%          | 2          | 4%          |
| Central MA Housing Alliance             | 3             | 5%          | 3          | 5%          |
| <b>HomeBASE Shelter Exits by Region</b> |               |             |            |             |
| <b>Total</b>                            | <b>203</b>    | <b>100%</b> | <b>203</b> | <b>100%</b> |
| Berkshire Housing                       | 8             | 4%          | 8          | 4%          |
| Community Teamwork, Inc.                | 8             | 4%          | 8          | 4%          |
| Franklin County                         | 1             | <1%         | 1          | 0%          |
| Housing Assistance Corp.                | 2             | 1%          | 2          | 1%          |
| Way Finders                             | 39            | 19%         | 39         | 19%         |
| Metro Housing Boston                    | 79            | 39%         | 79         | 39%         |
| RCAP Solutions                          | 7             | 3%          | 7          | 3%          |
| South Middlesex Opportunity Council     | 9             | 4%          | 9          | 4%          |
| NeighborWorks Housing Solutions         | 27            | 13%         | 27         | 13%         |
| Lynn Housing Authority                  | 10            | 5%          | 10         | 5%          |
| Central MA Housing Alliance             | 13            | 6%          | 13         | 6%          |
| <b>HomeBASE Hotel Exits by Region</b>   |               |             |            |             |
| <b>Total</b>                            | <b>3</b>      | <b>100%</b> | <b>3</b>   | <b>100%</b> |
| Berkshire Housing                       | 0             | 0%          | 0          | 0%          |
| Community Teamwork, Inc.                | 0             | 0%          | 0          | 0%          |
| Franklin County                         | 0             | 0%          | 0          | 0%          |
| Housing Assistance Corp.                | 0             | 0%          | 0          | 0%          |
| Way Finders                             | 0             | 0%          | 0          | 0%          |
| Metro Housing Boston                    | 3             | 100%        | 3          | 100%        |
| RCAP Solutions                          | 0             | 0%          | 0          | 0%          |
| South Middlesex Opportunity Council     | 0             | 0%          | 0          | 0%          |
| NeighborWorks Housing Solutions         | 0             | 0%          | 0          | 0%          |
| Lynn Housing Authority                  | 0             | 0%          | 0          | 0%          |
| Central MA Housing Alliance             | 0             | 0%          | 0          | 0%          |

|   | Current Month |             | YTD #      | YTD %       |
|---|---------------|-------------|------------|-------------|
|   | Jul #         | Jul %       |            |             |
| <b>RAFT</b>                             |               |             |            |             |
| <b>Total Applying</b>                   | <b>560</b>    |             | <b>560</b> |             |
| <b>Total Approved</b>                   | <b>468</b>    | <b>100%</b> | <b>468</b> | <b>100%</b> |
| Upstream rent arrears-public/subsidized | 14            | 3%          | 14         | 3%          |
| Upstream rent arrears-market rent       | 17            | 4%          | 17         | 4%          |
| Upstream mortgage arrears               | 2             | <1%         | 2          | <1%         |
| Doubled up and asked to leave           | 154           | 33%         | 154        | 33%         |
| Domestic violence                       | 14            | 3%          | 14         | 3%          |
| Eviction-public/subsidized              | 31            | 7%          | 31         | 7%          |
| Eviction-market rent                    | 100           | 21%         | 100        | 21%         |
| Foreclosure                             | 12            | 3%          | 12         | 3%          |
| Fire/flood/natural disaster             | 6             | 1%          | 6          | 1%          |
| Health/safety                           | 45            | 10%         | 45         | 10%         |
| Overcrowding                            | 9             | 2%          | 9          | 2%          |
| Utility shutoff                         | 45            | 10%         | 45         | 10%         |
| Other                                   | 19            | 4%          | 19         | 4%          |