

DHCD EA Monthly Report, Statewide Summary

July 2020

EA Applications and Placements

EA Applications	Jul-20	Jun-20	FY21 YTD
Families Applying for EA	261	207	261
Health & Safety Assessments Completed	95	76	95
Families with Health & Safety Risk	85	70	85
Families Entering EA (Shelter, Motels, and HomeBASE)	132	131	132
Placement-to-Application Ratio	51%	63%	51%

Notes:

Families submitting more than one application during a month were counted once.

Families entering EA includes families entering shelter or hotels/motels and families diverted

from shelter or hotels/motels into HomeBASE at the front door.

HAS assessment data for February and March are estimates based on referrals to DCF.

36 families (1% of families referred) received multiple HAS assessments during the previous 6 months.

The standard used to determine substantial health and safety risk can be found at the following link:

<https://www.mass.gov/files/documents/2016/07/oe/healthandsafetyassessmentinitiativeadministrativeplan.pdf>

EA Placements	Jul-20		Jun-20		FY21 YTD	
	Number	Percent	Number	Percent	Number	Percent
Total Entering EA or HomeBASE	132	100%	131	100%	132	100%
Entering EA Shelter/Motels	116	88%	108	82%	116	88%
Presumptive Placements	60	45%	63	48%	60	45%
Shelters	116	88%	108	82%	116	88%
Motels	0	0%	0	0%	0	<1%
HomeBASE Diversions (Front Door)	16	12%	23	18%	16	12%

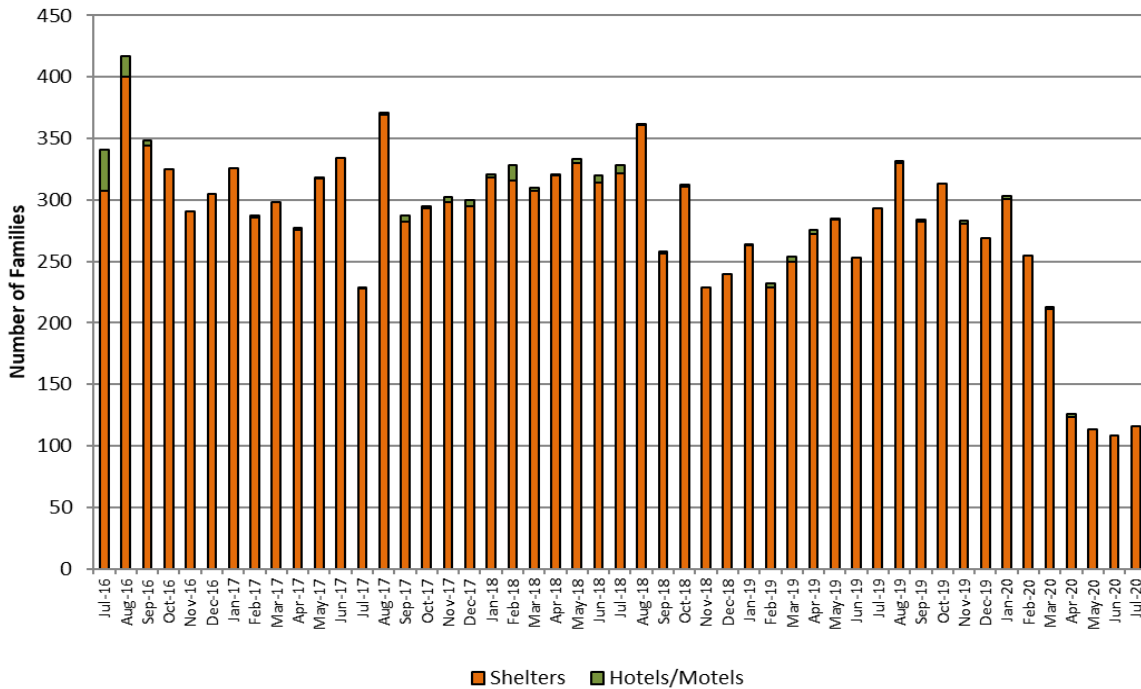
EA Shelter/Motels Placements, Reasons for Homelessness

	Jul-20		Jun-20		FY21 YTD	
	Number	Percent	Number	Percent	Number	Percent
Total	116	100%	108	100%	116	100%
Domestic Violence	25	22%	21	19%	25	22%
Fire/Natural Disaster	2	2%	1	1%	2	2%
Evict: Condemnation	0	0%	0	0%	0	0%
Evict: Excused Conduct	0	0%	0	0%	0	0%
Evict: Foreclosure	0	0%	0	0%	0	0%
Evict: Non Payment - Medical	0	0%	0	0%	0	0%
Evict: Non Payment - Disability	0	0%	0	0%	0	0%
Evict: Non Payment - Income Loss	0	0%	0	0%	0	0%
Evict: Non Renewal of Tenancy	1	1%	0	0%	1	1%
Threatened Evict - Unauthorized Tenant	6	5%	6	6%	6	5%
H&S: Violent Conduct	1	1%	4	4%	1	1%
H&S: Mental Illness	2	2%	2	2%	2	2%
H&S: Substance Abuse	0	0%	2	2%	0	0%
H&S: Conditions in Unit	6	5%	0	0%	6	5%
H&S: Irregular Housing situation	55	47%	44	41%	55	47%
H&S: Not Meant for Human Habitation	13	11%	22	20%	13	11%
TESI or Aid Pending	5	4%	6	6%	5	4%

Note: Families whose HomeBASE rental assistance benefit ended during the month may be placed in later months.

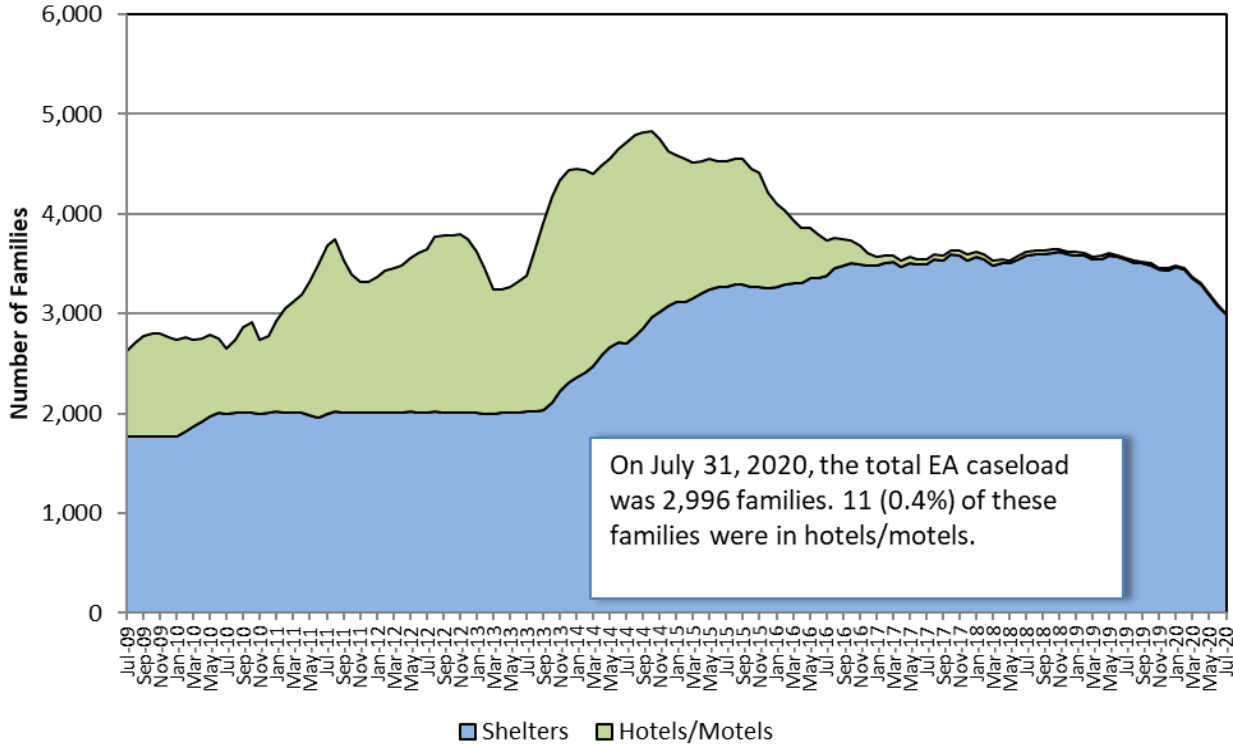
Sources: EA Daily Entry Reports and ASIST.

EA Shelter and Hotel/Motel Placements



EA Caseload

Average Daily EA Shelter & Hotel/Motel Caseload, Jul. 2009- Jul. 2020



Note: Methodology for calculating shelter caseload changed in FY15 from an average daily number of contracted units (minus vacancies) to an end-of-the-month count of occupied shelter units using DHCD's bed registry.

Children Served

Age Range	Jul-20		Jun-20		FY21 Monthly Average	
	# Children	% Children	Number	Percent	Number	Percent
Total	6,048	100%	6,224	100%	6,048	100%
0-2 yrs.	1,252	21%	1,300	21%	1,252	21%
3-4 yrs.	798	13%	840	13%	798	13%
5-8 yrs.	1,411	23%	1,433	23%	1,411	23%
9-11 yrs.	948	16%	980	16%	948	16%
12-14 yrs.	748	12%	760	12%	748	12%
15-18 yrs.	709	12%	737	12%	709	12%
19-20 yrs.	182	3%	174	3%	182	3%

Note: Data indicate children active in EA shelters or hotels at end of the month.

EA Exits

Families Exiting Shelter and Hotels/Motels	Jul-20		Jun-20		FY21 YTD	
	Number	Percent	Number	Percent	Number	Percent
Total Exits	194	100%	245	100%	194	100%
Abandoned	20	10%	25	10%	20	10%
Criminal Activity	0	0%	0	0%	0	0%
Feasible Alternative Housing with HB	130	67%	153	62%	130	67%
Feasible Alternative Housing without HB	28	14%	47	19%	28	14%
Ineligible	5	3%	2	1%	5	3%
Rejected Placement	0	0%	1	<1%	0	0%
Noncompliance	0	0%	0	0%	0	0%
Temporary Shelter Interruption	11	6%	16	7%	11	6%
Other/Unknown	0	0%	1	<1%	0	0%

Notes:

Families terminated from shelter for abandoning their placements or non-compliance may return to the system pending an appeal.

Families receiving a Temporary Shelter Interruption may return to the system within 30 days.

Types of Subsidies	Jul-20		Jun-20		FY21 YTD	
	Number	Percent	Number	Percent	Number	Percent
Total Families Receiving Subsidies	141	100%	173	100%	141	100%
ESG	0	0%	0	0%	0	0%
HomeBASE	130	92%	153	88%	130	92%
HUD CoC	3	2%	3	2%	3	2%
MRVP	3	2%	6	3%	3	2%
Private Subsidized Housing	13	9%	2	1%	13	9%
Section 8 Mobile Voucher	49	35%	88	51%	49	35%
Section 8 Project-Based Voucher	8	6%	7	4%	8	6%
Other Public Housing	5	4%	15	9%	5	4%
Transportation	0	0%	3	2%	0	0%

Notes:

Families may receive multiple subsidy types. Therefore, the sum of the subsidy types do not equal the number of families.

Data based on date of shelter/hotel exit. HomeBASE data based on the date that checks are issued may vary.

RAFT - Homelessness Prevention

RAFT	Jul-20		Jun-20		FY21 YTD	
	Number	Percent	Number	Percent	Number	Percent
Total Applying	843		721		843	
Total Approved	791	100%	690	100%	791	100%
Upstream rent arrears-public/subsidized	21	3%	40	6%	21	3%
Upstream rent arrears-market rent	102	13%	145	21%	102	13%
Upstream mortgage arrears	15	2%	9	1%	15	2%
Doubled up and asked to leave	57	7%	68	10%	57	7%
Domestic violence	3	0%	4	1%	3	0%
Eviction-public/subsidized	104	13%	85	12%	104	13%
Eviction-market rent	398	50%	266	39%	398	50%
Foreclosure	27	3%	7	1%	27	3%
Fire/flood/natural disaster	4	1%	3	<1%	4	1%
Health/safety	21	3%	19	3%	21	3%
Overcrowding	2	<1%	4	1%	2	<1%
Utility shutoff	18	2%	16	2%	18	2%
Other	19	2%	24	3%	19	2%
COVID-inability to pay future market rent	0	0%	0	0%	0	0%
COVID-inability to pay future mortgage	0	0%	0	0%	0	0%

Note: Families approved for RAFT may have applied during the previous month.

DHCD - EA Monthly Report

Jul-20

	Jul #	Jul %	Jun #	FY21 YTD	
Families Applying for EA					
Total	261	100%	207	261	100%
Boston	45	17%	28	45	17%
Central Mass	24	9%	22	24	9%
North Shore	87	33%	63	87	33%
South Shore	55	21%	46	55	21%
Western Mass	50	19%	48	50	19%
Families Placed in EA Shelter and Hotels/Motels					
Total	116	100%	108	116	100%
Boston	45	39%	42	45	39%
Central Mass	13	11%	14	13	11%
North Shore	16	14%	15	16	14%
South Shore	19	16%	17	19	16%
Western Mass	23	20%	20	23	20%
HomeBASE Entries (Diversion and Exits)					
Total	160	100%	145	160	100%
Berkshire Housing	3	2%	1	3	2%
Community Teamwork, Inc.	7	4%	12	7	4%
Franklin County	0	0%	1	0	0%
Housing Assistance Corp.	4	3%	0	4	3%
Way Finders	24	15%	15	24	15%
Metro Housing Boston	71	44%	61	71	44%
RCAP Solutions	3	2%	3	3	2%
South Middlesex Opportunity Council	6	4%	8	6	4%
NeighborWorks Housing Solutions	27	17%	28	27	17%
Lynn Housing Authority	11	7%	9	11	7%
Central MA Housing Alliance	4	3%	7	4	3%

Notes

Average Daily Number of Families in Hotels is calculated as the average across weekly point-in-time estimates from the reported month; Hotel region indicates region of originating eligibility office. Totals may not equal the sum of regions due to rounding.

Sources: EA Daily Entry Report, ASIST, and EA Weekly Motel Reports.

DHCD - EA Monthly Report, Cumulative Data
July 2020

Families Applying for EA	Jul	FY21 YTD #	FY21 YTD%
Total Families Applying	261	261	100%
Boston	45	45	17%
Central Mass	24	24	9%
North Shore	87	87	33%
South Shore	55	55	21%
Western Mass	50	50	19%
Health & Safety Assessment			
H&S Assessment Completed	95	95	100%
Families with H&S Risk	85	85	89%
Families Placed in Shelter/Motels			
Total	116	116	100%
Families Placed in Hotels/Motels	0	0	0%
Presumptive Placement	60	60	52%
Boston	45	45	39%
Central Mass	13	13	11%
North Shore	16	16	14%
South Shore	19	19	16%
Western Mass	23	23	20%
Monthly Caseload (# of Families)	7/31/2020	FY21 Monthly Average	
Total	2,996	2,996	
Shelter	2,985	2,985	
Hotel/Motel	11	11	
Children Served	Jul	FY21 Monthly Average	FY21 %
Total	6,048	6,048	100%
0-2 yrs.	1,252	1,252	21%
3-4 yrs.	798	798	13%
5-8 yrs.	1,411	1,411	23%
9-11 yrs.	948	948	16%
12-14 yrs.	748	748	12%
15-18 yrs.	709	709	12%
19-20 yrs.	182	182	3%

	Jul	FY21 Monthly Average	
Placement to Application Ratio	51%	51%	
Reasons for Homelessness, Shelter/Motels	Jul	FY20 #	FY20 %
Total Placements	116	116	100%
Domestic Violence	25	25	22%
Fire/Natural Disaster	2	2	2%
Evict: Condemnation	0	0	0%
Evict: Excused Conduct	0	0	0%
Evict: Foreclosure	0	0	0%
Evict: Non Payment - Medical	0	0	0%
Evict: Non Payment - Disability	0	0	0%
Evict: Non Payment - Income Loss	0	0	0%
Evict: Non Renewal of Tenancy	1	1	1%
Threatened Evict - Unauthorized Tenant	6	6	5%
H&S: Violent Conduct	1	1	1%
H&S: Mental Illness	2	2	2%
H&S: Substance Abuse	0	0	0%
H&S: Conditions in Unit	6	6	5%
H&S: Irregular Housing situation	55	55	47%
H&S: Not Meant for Human Habitation	13	13	11%
Aid Pending	1	1	1%
Replacement/TESI	4	4	3%
Shelter and Hotel/Motel Exits			
Total	194	194	100%
Abandoned	20	20	10%
Criminal Activity/Fraud	0	0	0%
Feasible Alternative Housing with HB	130	130	67%
Feasible Alternative Housing without HB	28	28	14%
Ineligible	5	5	3%
No Show/Rejected Placement	0	0	0%
NonCompliance/Termination for Cause	0	0	0%
Temporary Shelter Interruption	11	11	6%
Other/Unknown	0	0	0%

Hotel/Motel Exits	Jul	FY21 YTD #	FY21 YTD%
Total Exits	0	0	
Abandoned	0	0	
Criminal Activity	0	0	
Feasible Alternative Housing with HB	0	0	
Feasible Alternative Housing without HB	0	0	
Ineligible	0	0	
No Show/Rejected Placement	0	0	
NonCompliance/Termination for Cause	0	0	
Temporary Shelter Interruption	0	0	
Other/Unknown	0	0	
Types of Subsidies at Exit			
Total Families Receiving Subsidies	141	141	100%
ESG	0	0	0%
HomeBASE	130	130	92%
HUD CoC	3	3	2%
MRVP	3	3	2%
Private Subsidized Housing	13	13	9%
Section 8 Mobile Voucher	49	49	35%
Section 8 Project-Based Voucher	8	8	6%
Other Public Housing	5	5	4%
Transportation	0	0	0%
HomeBASE Entries (Diversion and Exits)			
Total	160	160	100%
Berkshire Housing	3	3	2%
Community Teamwork, Inc.	7	7	4%
Franklin County	0	0	0%
Housing Assistance Corp.	4	4	3%
Way Finders	24	24	15%
Metro Housing Boston	71	71	44%
RCAP Solutions	3	3	2%
South Middlesex Opportunity Council	6	6	4%
NeighborWorks Housing Solutions	27	27	17%
Lynn Housing Authority	11	11	7%
Central MA Housing Alliance	4	4	3%

HomeBASE Diversion by Region		Jul	FY21 YTD #	FY21 YTD%
Total		16	16	100%
Berkshire Housing		0	0	0%
Community Teamwork, Inc.		3	3	19%
Franklin County		0	0	0%
Housing Assistance Corp.		3	3	19%
Way Finders		1	1	6%
Metro Housing Boston		1	1	6%
RCAP Solutions		0	0	0%
South Middlesex Opportunity Council		0	0	0%
NeighborWorks Housing Solutions		6	6	38%
Lynn Housing Authority		2	2	13%
Central MA Housing Alliance		0	0	0%
HomeBASE Shelter Exits by Region				
Total		144	144	100%
Berkshire Housing		3	3	2%
Community Teamwork, Inc.		4	4	3%
Franklin County		0	0	0%
Housing Assistance Corp.		1	1	1%
Way Finders		23	23	16%
Metro Housing Boston		70	70	49%
RCAP Solutions		3	3	2%
South Middlesex Opportunity Council		6	6	4%
NeighborWorks Housing Solutions		21	21	15%
Lynn Housing Authority		9	9	6%
Central MA Housing Alliance		4	4	3%
HomeBASE Hotel Exits by Region				
Total		0	0	
Berkshire Housing		0	0	
Community Teamwork, Inc.		0	0	
Franklin County		0	0	
Housing Assistance Corp.		0	0	
Way Finders		0	0	
Metro Housing Boston		0	0	
RCAP Solutions		0	0	
South Middlesex Opportunity Council		0	0	
NeighborWorks Housing Solutions		0	0	
Lynn Housing Authority		0	0	
Central MA Housing Alliance		0	0	

RAFT	Jul	FY21 YTD #	FY21 YTD%
Total Applying	843	843	
Total Approved	791	791	100%
Upstream rent arrears-public/subsidized	21	21	3%
Upstream rent arrears-market rent	102	102	13%
Upstream mortgage arrears	15	15	2%
Doubled up and asked to leave	57	57	7%
Domestic violence	3	3	0%
Eviction-public/subsidized	104	104	13%
Eviction-market rent	398	398	50%
Foreclosure	27	27	3%
Fire/flood/natural disaster	4	4	1%
Health/safety	21	21	3%
Overcrowding	2	2	0%
Utility shutoff	18	18	2%
Other	19	19	2%
COVID-inability to pay future market rent	0	0	0%
COVID-inability to pay future mortgage	0	0	0%