

# DHCD EA Monthly Report, Statewide Summary

## November 2020

### EA Applications and Placements

EA Applications	Nov-20	Oct-20	FY21 YTD
Families Applying for EA	322	372	1,866
Health & Safety Assessments Completed	120	130	571
Families with Health & Safety Risk	99	102	476
Families Entering EA (Shelter, Motels, and HomeBASE)	181	204	884
Placement-to-Application Ratio	56%	55%	47%

#### Notes:

Families submitting more than one application during a month were counted once.

Families entering EA includes families entering shelter or hotels/motels and families diverted from shelter or hotels/motels into HomeBASE at the front door.

The standard used to determine substantial health and safety risk can be found at the following link:

<https://www.mass.gov/files/documents/2016/07/oe/healthandsafetyassessmentinitiativeadministrativeplan.pdf>

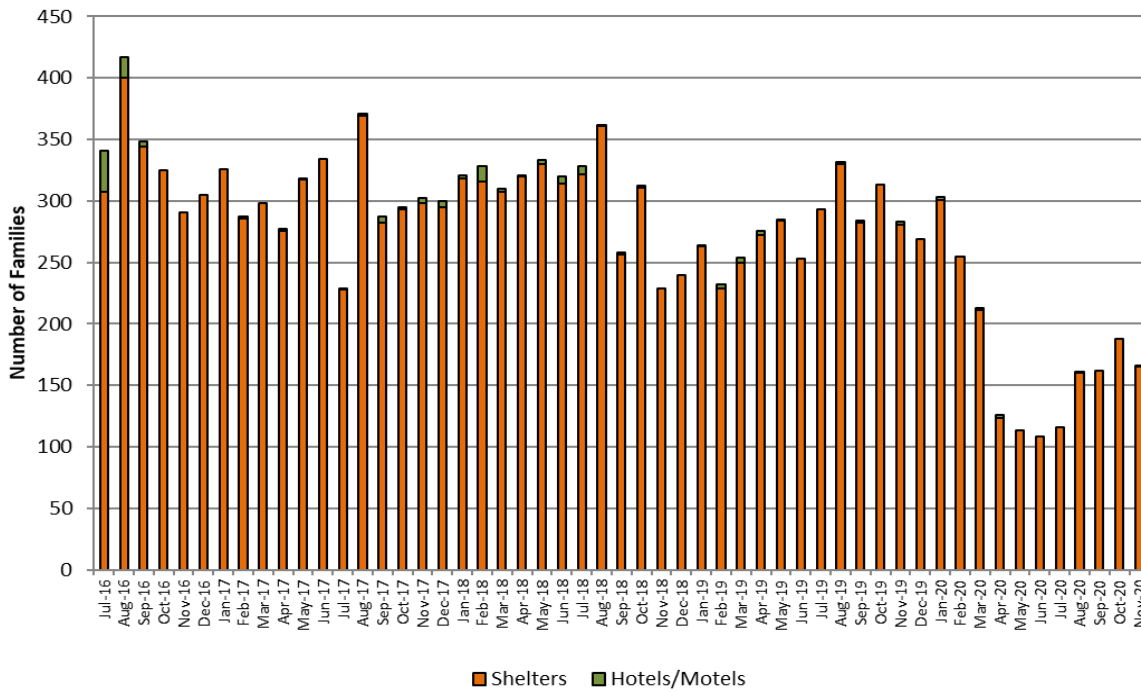
EA Placements	Nov-20		Oct-20		FY21 YTD	
	Number	Percent	Number	Percent	Number	Percent
Total Entering EA or HomeBASE	181	100%	204	100%	884	100%
Entering EA Shelter/Motels	166	92%	188	92%	793	90%
Presumptive Placements	55	30%	73	36%	321	36%
Shelters	165	91%	188	92%	791	89%
Motels	1	1%	0	0%	2	<1%
HomeBASE Diversions (Front Door)	15	8%	16	8%	91	10%

### EA Shelter/Motels Placements, Reasons for Homelessness

	Nov-20		Oct-20		FY21 YTD	
	Number	Percent	Number	Percent	Number	Percent
<b>Total</b>	<b>166</b>	<b>100%</b>	<b>188</b>	<b>100%</b>	<b>793</b>	<b>100%</b>
Domestic Violence	36	22%	43	23%	176	22%
Fire/Natural Disaster	3	2%	4	2%	14	2%
Evict: Condemnation	0	0%	1	1%	3	<1%
Evict: Excused Conduct	0	0%	0	0%	0	0%
Evict: Foreclosure	0	0%	0	0%	0	0%
Evict: Non Payment - Medical	0	0%	0	0%	0	0%
Evict: Non Payment - Disability	0	0%	0	0%	0	0%
Evict: Non Payment - Income Loss	1	1%	1	1%	3	<1
Evict: Non Renewal of Tenancy	1	1%	1	1%	4	1%
Threatened Evict - Unauthorized Tenant	11	7%	17	9%	65	8%
H&S: Violent Conduct	1	1%	4	2%	12	2%
H&S: Mental Illness	2	1%	1	1%	11	1%
H&S: Substance Abuse	2	1%	2	1%	7	1%
H&S: Conditions in Unit	2	1%	1	1%	11	1%
H&S: Irregular Housing situation	68	41%	79	42%	315	40%
H&S: Not Meant for Human Habitation	31	19%	25	13%	133	17%
TESI or Aid Pending	8	5%	9	5%	39	5%

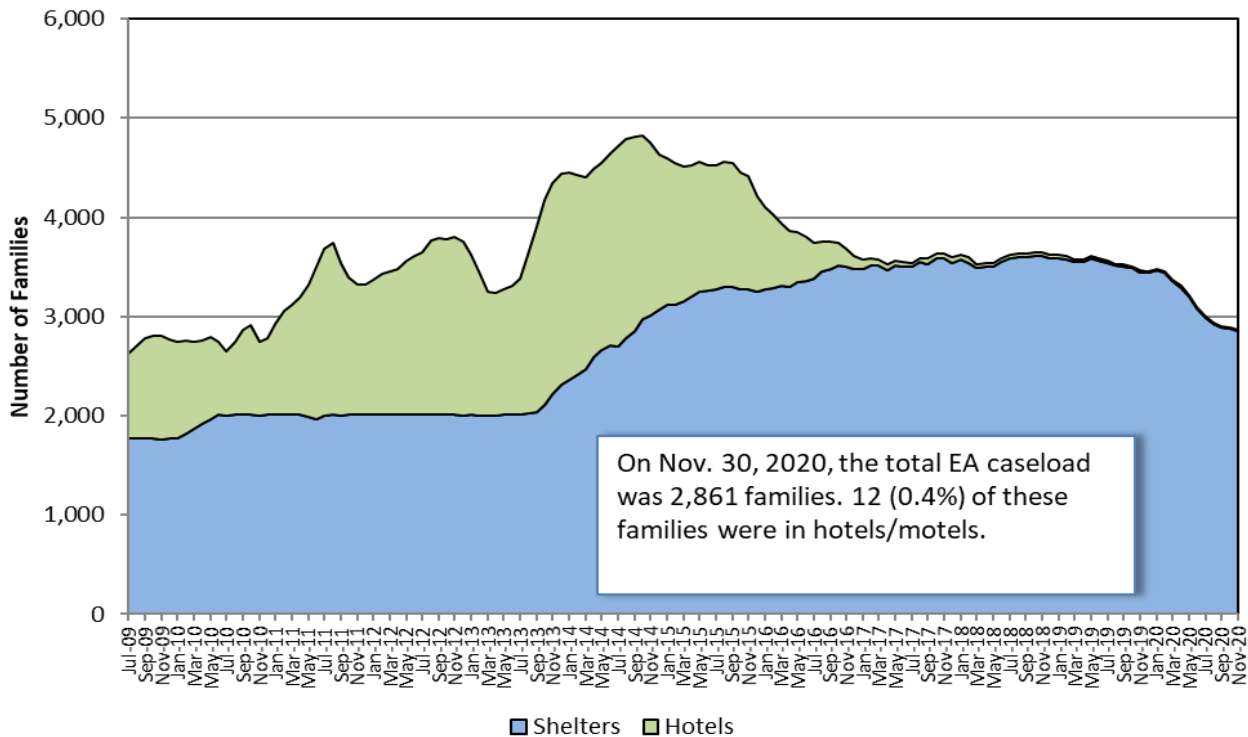
**Sources:** EA Daily Entry Reports and ASIST.

EA Shelter and Hotel/Motel Placements



EA Caseload

EA Shelter & Hotel/Motel Caseload, Jul. 2009 - Nov. 2020



**Note:** Methodology for calculating shelter caseload changed in FY15 from an average daily number of contracted units (minus vacancies) to an end-of-the-month count of occupied shelter units using DHCD's bed registry.

## Children Served

Age Range	Nov-20		Oct-20		FY21 Monthly Average	
	# Children	% Children	Number	Percent	Number	Percent
<b>Total</b>	<b>5,831</b>	<b>100%</b>	<b>5,862</b>	<b>100%</b>	<b>5,913</b>	<b>100%</b>
0-2 yrs.	1,172	20%	1,200	20%	1,215	21%
3-4 yrs.	799	14%	792	14%	793	13%
5-8 yrs.	1,402	24%	1,410	24%	1,403	24%
9-11 yrs.	860	15%	883	15%	904	15%
12-14 yrs.	748	13%	729	12%	733	12%
15-18 yrs.	681	12%	675	12%	690	12%
19-20 yrs.	169	3%	173	3%	174	3%

**Note:** Data indicate children active in EA shelters or hotels at end of the month.

## EA Exits

Families Exiting Shelter and Hotels/Motels	Nov-20		Oct-20		FY21 YTD	
	Number	Percent	Number	Percent	Number	Percent
<b>Total Exits</b>	<b>187</b>	<b>100%</b>	<b>173</b>	<b>100%</b>	<b>924</b>	<b>100%</b>
Abandoned	8	4%	20	12%	89	10%
Criminal Activity	0	0%	0	0%	1	<1%
Feasible Alternative Housing with HB	134	72%	111	64%	623	67%
Feasible Alternative Housing without HB	28	15%	23	13%	127	14%
Ineligible	4	2%	4	2%	16	2%
Rejected Placement	1	1%	1	1%	4	<1%
Noncompliance	0	0%	0	0%	1	<1%
Temporary Shelter Interruption	12	6%	14	8%	63	7%
Other/Unknown	0	0%	0	0%	0	0%

**Notes:**

Families terminated from shelter for abandoning their placements or non-compliance may return to the system pending an appeal.

Families receiving a Temporary Shelter Interruption may return to the system within 30 days.

Types of Subsidies	Nov-20		Oct-20		FY21 YTD	
	Number	Percent	Number	Percent	Number	Percent
<b>Total Families Receiving Subsidies</b>	<b>147</b>	<b>100%</b>	<b>125</b>	<b>100%</b>	<b>692</b>	<b>100%</b>
ESG	0	0%	0	0%	0	0%
HomeBASE	134	91%	111	76%	623	90%
HUD CoC	5	3%	3	2%	15	2%
MRVP	1	1%	4	3%	14	2%
Private Subsidized Housing	9	6%	12	8%	54	8%
Section 8 Mobile Voucher	66	45%	42	29%	274	40%
Section 8 Project-Based Voucher	6	4%	1	1%	30	4%
Other Public Housing	17	12%	13	9%	59	9%
Transportation	1	1%	4	3%	7	1%

**Notes:**

Families may receive multiple subsidy types. Therefore, the sum of the subsidy types do not equal the number of families.

Data based on date of shelter/hotel exit. HomeBASE data based on the date that checks are issued may vary.

# DHCD - EA Monthly Report

## Nov-20

	Nov #	Nov %	Oct #	FY21 YTD	
Families Applying for EA					
Total	322	100%	372	1,866	100%
Boston	110	34%	123	543	29%
Central Mass	18	6%	32	147	8%
North Shore	111	34%	81	510	27%
South Shore	38	12%	47	296	16%
Western Mass	45	14%	89	370	20%
Families Placed in EA Shelter and Hotels/Motels					
Total	166	100%	188	793	100%
Boston	71	43%	70	335	42%
Central Mass	19	11%	20	88	11%
North Shore	13	8%	25	101	13%
South Shore	38	23%	45	154	19%
Western Mass	25	15%	28	115	15%
HomeBASE Entries (Diversion and Exits)					
Total	197	100%	123	821	100%
Berkshire Housing	3	2%	3	15	2%
Community Teamwork, Inc.	9	5%	7	57	7%
Franklin County	0	0%	0	0	0%
Housing Assistance Corp.	1	1%	2	15	2%
Way Finders	24	12%	23	123	15%
Metro Housing Boston	111	56%	49	386	47%
RCAP Solutions	4	2%	0	11	1%
South Middlesex Opportunity Council	9	5%	8	40	5%
NeighborWorks Housing Solutions	25	13%	21	117	14%
Lynn Housing Authority	7	4%	4	37	5%
Central MA Housing Alliance	4	2%	6	20	2%

DHCD - EA Monthly Report, Cumulative Data  
November 2020

Families Applying for EA	Jul	Aug	Sep	Oct	Nov	FY21 YTD #	FY21 YTD%
<b>Total Families Applying</b>	<b>261</b>	<b>589</b>	<b>322</b>	<b>372</b>	<b>322</b>	<b>1,866</b>	<b>100%</b>
Boston	45	180	85	123	110	543	29%
Central Mass	24	49	24	32	18	147	8%
North Shore	87	152	79	81	111	510	27%
South Shore	55	97	59	47	38	296	16%
Western Mass	50	111	75	89	45	370	20%
<b>Health &amp; Safety Assessment</b>							
<b>H&amp;S Assessment Completed</b>	<b>95</b>	<b>100</b>	<b>126</b>	<b>130</b>	<b>120</b>	<b>571</b>	<b>100%</b>
Families with H&S Risk	85	85	105	102	99	476	83%
<b>Families Placed in Shelter/Motels</b>							
<b>Total</b>	<b>116</b>	<b>161</b>	<b>162</b>	<b>188</b>	<b>166</b>	<b>793</b>	<b>100%</b>
Families Placed in Hotels/Motels	0	1	0	0	1	2	0%
Presumptive Placement	60	71	62	73	55	321	40%
Boston	45	78	71	70	71	335	42%
Central Mass	13	19	17	20	19	88	11%
North Shore	16	25	22	25	13	101	13%
South Shore	19	20	32	45	38	154	19%
Western Mass	23	19	20	28	25	115	15%
<b>Monthly Caseload (# of Families)</b>	<b>7/31/2019</b>	<b>8/31/2020</b>	<b>9/30/2020</b>	<b>10/31/2020</b>	<b>11/30/2020</b>	<b>FY21 Monthly Average</b>	
<b>Total</b>	<b>2,996</b>	<b>2,933</b>	<b>2,898</b>	<b>2,894</b>	<b>2,861</b>	<b>2,916</b>	
Shelter	2,985	2,922	2,887	2,882	2,849	2,905	
Hotel/Motel	11	11	11	12	12	11	
<b>Children Served</b>	<b>Jul</b>	<b>Aug</b>	<b>Sep</b>	<b>Oct</b>	<b>Nov</b>	<b>FY21 Monthly Average</b>	<b>FY21 %</b>
<b>Total</b>	<b>6,048</b>	<b>5,948</b>	<b>5,874</b>	<b>5,862</b>	<b>5,831</b>	<b>5,913</b>	<b>100%</b>
0-2 yrs.	1,252	1,239	1,212	1,200	1,172	1,215	21%
3-4 yrs.	798	783	792	792	799	793	13%
5-8 yrs.	1,411	1,395	1,399	1,410	1,402	1,403	24%
9-11 yrs.	948	931	897	883	860	904	15%
12-14 yrs.	748	732	709	729	748	733	12%
15-18 yrs.	709	698	688	675	681	690	12%
19-20 yrs.	182	170	177	173	169	174	3%

	Jul	Aug	Sep	Oct	Nov	FY21 Monthly Average	
<b>Placement to Application Ratio</b>	<b>51%</b>	<b>31%</b>	<b>57%</b>	<b>55%</b>	<b>56%</b>	<b>47%</b>	
<b>Reasons for Homelessness, Shelter/Motels</b>	<b>Jul</b>	<b>Aug</b>	<b>Sep</b>	<b>Oct</b>	<b>Nov</b>	<b>FY20 #</b>	<b>FY20 %</b>
<b>Total Placements</b>	<b>116</b>	<b>161</b>	<b>162</b>	<b>188</b>	<b>166</b>	<b>793</b>	<b>100%</b>
Domestic Violence	25	40	32	43	36	176	22%
Fire/Natural Disaster	2	3	2	4	3	14	2%
Evict: Condemnation	0	1	1	1	0	3	<1%
Evict: Excused Conduct	0	0	0	0	0	0	0%
Evict: Foreclosure	0	0	0	0	0	0	0%
Evict: Non Payment - Medical	0	0	0	0	0	0	0%
Evict: Non Payment - Disability	0	0	0	0	0	0	0%
Evict: Non Payment - Income Loss	0	1	0	1	1	3	<1
Evict: Non Renewal of Tenancy	1	0	1	1	1	4	1%
Threatened Evict - Unauthorized Tenant	6	7	24	17	11	65	8%
H&S: Violent Conduct	1	4	2	4	1	12	2%
H&S: Mental Illness	2	3	3	1	2	11	1%
H&S: Substance Abuse	0	2	1	2	2	7	1%
H&S: Conditions in Unit	6	2	0	1	2	11	1%
H&S: Irregular Housing situation	55	56	57	79	68	315	40%
H&S: Not Meant for Human Habitation	13	36	28	25	31	133	17%
Aid Pending	1	2	6	4	1	14	2%
Replacement/TESI	4	4	5	5	7	25	3%
<b>Shelter and Hotel/Motel Exits</b>							
<b>Total</b>	<b>194</b>	<b>202</b>	<b>168</b>	<b>173</b>	<b>187</b>	<b>924</b>	<b>100%</b>
Abandoned	20	24	17	20	8	89	10%
Criminal Activity/Fraud	0	0	1	0	0	1	<1%
Feasible Alternative Housing with HB	130	127	121	111	134	623	67%
Feasible Alternative Housing without HB	28	29	19	23	28	127	14%
Ineligible	5	2	1	4	4	16	2%
No Show/Rejected Placement	0	2	0	1	1	4	<1%
NonCompliance/Termination for Cause	0	1	0	0	0	1	<1%
Temporary Shelter Interruption	11	17	9	14	12	63	7%
Other/Unknown	0	0	0	0	0	0	0%

<b>Hotel/Motel Exits</b>	<b>Jul</b>	<b>Aug</b>	<b>Sep</b>	<b>Oct</b>	<b>Nov</b>	<b>FY21 YTD #</b>	<b>FY21 YTD%</b>
<b>Total Exits</b>	<b>0</b>	<b>1</b>	<b>0</b>	<b>0</b>	<b>0</b>	<b>1</b>	
Abandoned	0	0	0	0	0	0	
Criminal Activity	0	0	0	0	0	0	
Feasible Alternative Housing with HB	0	1	0	0	0	1	
Feasible Alternative Housing without HB	0	0	0	0	0	0	
Ineligible	0	0	0	0	0	0	
No Show/Rejected Placement	0	0	0	0	0	0	
NonCompliance/Termination for Cause	0	0	0	0	0	0	
Temporary Shelter Interruption	0	0	0	0	0	0	
Other/Unknown	0	0	0	0	0	0	
<b>Types of Subsidies at Exit</b>							
<b>Total Families Receiving Subsidies</b>	<b>141</b>	<b>145</b>	<b>134</b>	<b>125</b>	<b>147</b>	<b>692</b>	<b>100%</b>
ESG	0	0	0	0	0	0	0%
HomeBASE	130	127	121	111	134	623	90%
HUD CoC	3	2	2	3	5	15	2%
MRVP	3	6	0	4	1	14	2%
Private Subsidized Housing	13	10	10	12	9	54	8%
Section 8 Mobile Voucher	49	60	57	42	66	274	40%
Section 8 Project-Based Voucher	8	4	11	1	6	30	4%
Other Public Housing	5	15	9	13	17	59	9%
Transportation	0	1	1	4	1	7	1%
<b>HomeBASE Entries (Diversions and Exits)</b>							
<b>Total</b>	<b>160</b>	<b>166</b>	<b>175</b>	<b>123</b>	<b>197</b>	<b>821</b>	<b>100%</b>
Berkshire Housing	3	4	2	3	3	15	2%
Community Teamwork, Inc.	7	23	11	7	9	57	7%
Franklin County	0	0	0	0	0	0	0%
Housing Assistance Corp.	4	1	7	2	1	15	2%
Way Finders	24	25	27	23	24	123	15%
Metro Housing Boston	71	74	81	49	111	386	47%
RCAP Solutions	3	3	1	0	4	11	1%
South Middlesex Opportunity Council	6	9	8	8	9	40	5%
NeighborWorks Housing Solutions	27	20	24	21	25	117	14%
Lynn Housing Authority	11	5	10	4	7	37	5%
Central MA Housing Alliance	4	2	4	6	4	20	2%

<b>HomeBASE Diversion by Region</b>	<b>Jul</b>	<b>Aug</b>	<b>Sep</b>	<b>Oct</b>	<b>Nov</b>	<b>FY21 YTD #</b>	<b>FY21 YTD%</b>
<b>Total</b>	<b>16</b>	<b>21</b>	<b>23</b>	<b>16</b>	<b>15</b>	<b>91</b>	<b>100%</b>
Berkshire Housing	0	0	0	0	0	0	0%
Community Teamwork, Inc.	3	10	5	3	1	22	24%
Franklin County	0	0	0	0	0	0	0%
Housing Assistance Corp.	3	0	3	1	1	8	9%
Way Finders	1	4	6	4	3	18	20%
Metro Housing Boston	1	0	2	2	2	7	8%
RCAP Solutions	0	0	0	0	2	2	2%
South Middlesex Opportunity Council	0	0	1	1	1	3	0%
NeighborWorks Housing Solutions	6	7	6	4	4	27	30%
Lynn Housing Authority	2	0	0	0	0	2	2%
Central MA Housing Alliance	0	0	0	1	1	2	2%
<b>HomeBASE Shelter Exits by Region</b>							
<b>Total</b>	<b>144</b>	<b>145</b>	<b>152</b>	<b>107</b>	<b>182</b>	<b>730</b>	<b>100%</b>
Berkshire Housing	3	4	2	3	3	15	2%
Community Teamwork, Inc.	4	13	6	4	8	35	5%
Franklin County	0	0	0	0	0	0	0%
Housing Assistance Corp.	1	1	4	1	0	7	1%
Way Finders	23	21	21	19	21	105	14%
Metro Housing Boston	70	74	79	47	109	379	52%
RCAP Solutions	3	3	1	0	2	9	1%
South Middlesex Opportunity Council	6	9	7	7	8	37	5%
NeighborWorks Housing Solutions	21	13	18	17	21	90	12%
Lynn Housing Authority	9	5	10	4	7	35	5%
Central MA Housing Alliance	4	2	4	5	3	18	2%
<b>HomeBASE Hotel Exits by Region</b>							
<b>Total</b>	<b>0</b>	<b>0</b>	<b>0</b>	<b>0</b>	<b>0</b>	<b>0</b>	
Berkshire Housing	0	0	0	0	0	0	
Community Teamwork, Inc.	0	0	0	0	0	0	
Franklin County	0	0	0	0	0	0	
Housing Assistance Corp.	0	0	0	0	0	0	
Way Finders	0	0	0	0	0	0	
Metro Housing Boston	0	0	0	0	0	0	
RCAP Solutions	0	0	0	0	0	0	
South Middlesex Opportunity Council	0	0	0	0	0	0	
NeighborWorks Housing Solutions	0	0	0	0	0	0	
Lynn Housing Authority	0	0	0	0	0	0	
Central MA Housing Alliance	0	0	0	0	0	0	