

DHCD EA Monthly Report, Statewide Summary

October 2020

EA Applications and Placements

EA Applications	Oct-20	Sep-20	FY21 YTD
Families Applying for EA	372	322	1,544
Health & Safety Assessments Completed	168	126	489
Families with Health & Safety Risk	17*	105	275
Families Entering EA (Shelter, Motels, and HomeBASE)	204	185	703
Placement-to-Application Ratio	55%	57%	46%

Notes:

Families submitting more than one application during a month were counted once.

Families entering EA includes families entering shelter or hotels/motels and families diverted from shelter or hotels/motels into HomeBASE at the front door.

The standard used to determine substantial health and safety risk can be found at the following link:

<https://www.mass.gov/files/documents/2016/07/oe/healthandsafetyassessmentinitiativeadministrativeplan.pdf>

*Data for 146 families referred for Health and Safety Assessments in October was not available at time of reporting.

EA Placements	Oct-20		Sep-20		FY21 YTD	
	Number	Percent	Number	Percent	Number	Percent
Total Entering EA or HomeBASE	204	100%	185	100%	703	100%
Entering EA Shelter/Motels	188	92%	162	88%	627	89%
Presumptive Placements	73	36%	62	34%	266	38%
Shelters	188	92%	162	88%	626	89%
Motels	0	0%	0	0%	1	<1%
HomeBASE Diversions (Front Door)	16	8%	23	12%	76	11%

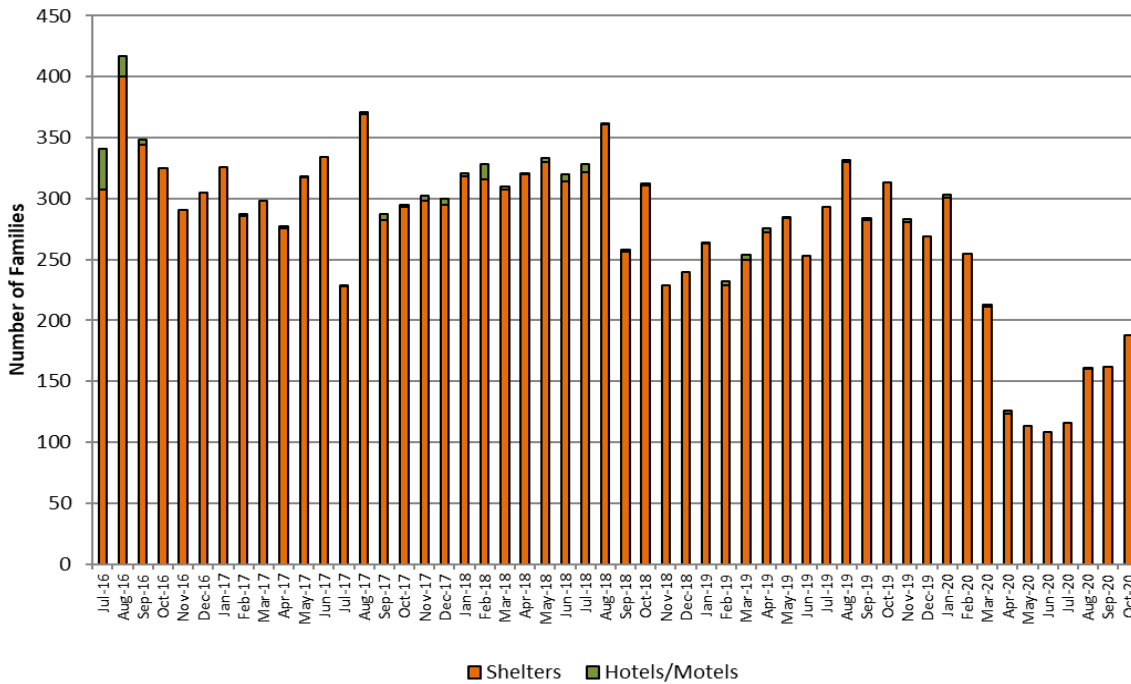
EA Shelter/Motels Placements, Reasons for Homelessness

	Oct-20		Sep-20		FY21 YTD	
	Number	Percent	Number	Percent	Number	Percent
Total	188	100%	162	100%	627	100%
Domestic Violence	43	23%	32	20%	140	22%
Fire/Natural Disaster	4	2%	2	1%	11	2%
Evict: Condemnation	1	1%	1	1%	3	<1%
Evict: Excused Conduct	0	0%	0	0%	0	0%
Evict: Foreclosure	0	0%	0	0%	0	0%
Evict: Non Payment - Medical	0	0%	0	0%	0	0%
Evict: Non Payment - Disability	0	0%	0	0%	0	0%
Evict: Non Payment - Income Loss	1	1%	0	0%	2	<1
Evict: Non Renewal of Tenancy	1	1%	1	1%	3	0%
Threatened Evict - Unauthorized Tenant	17	9%	24	15%	54	9%
H&S: Violent Conduct	4	2%	2	1%	11	2%
H&S: Mental Illness	1	1%	3	2%	9	1%
H&S: Substance Abuse	2	1%	1	1%	5	1%
H&S: Conditions in Unit	1	1%	0	0%	9	1%
H&S: Irregular Housing situation	79	42%	57	35%	247	39%
H&S: Not Meant for Human Habitation	25	13%	28	17%	102	16%
TESI or Aid Pending	9	5%	11	7%	31	5%

Note: Families whose HomeBASE rental assistance benefit ended during the month may be placed in later months.

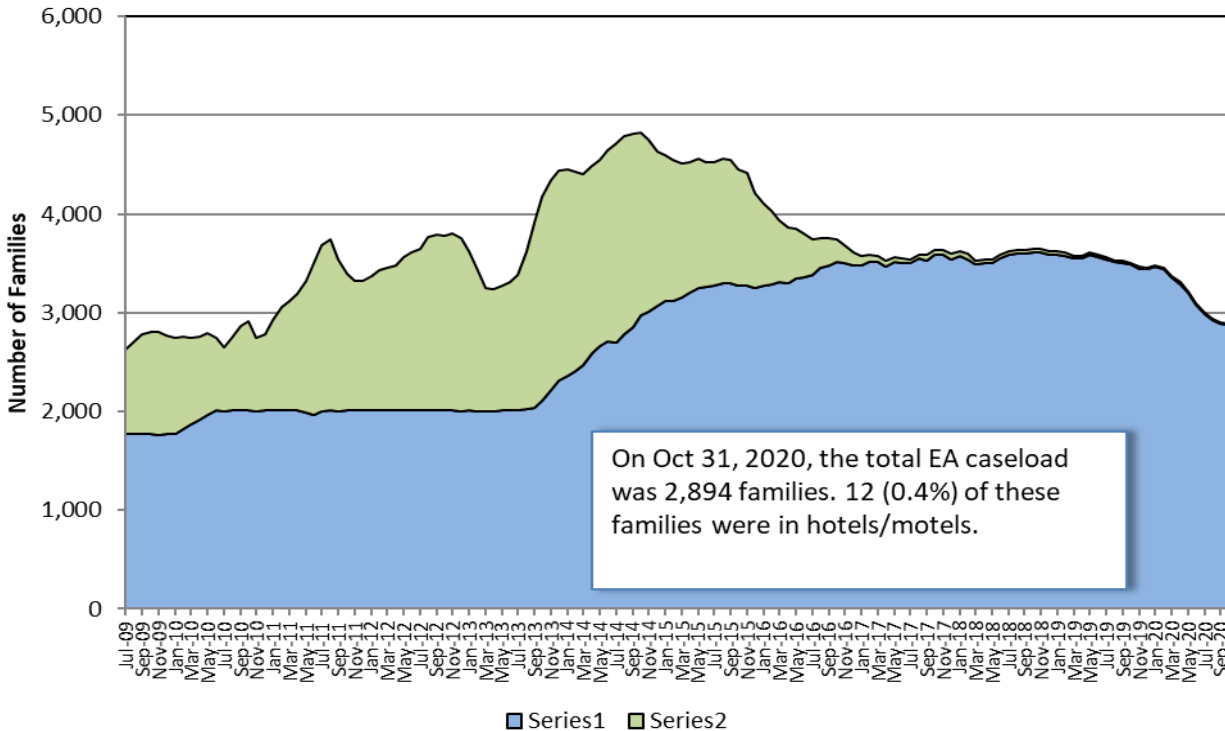
Sources: EA Daily Entry Reports and ASIST.

EA Shelter and Hotel/Motel Placements



EA Caseload

EA Shelter & Hotel/Motel Caseload, Jul. 2009- Oct. 2020



Note: Methodology for calculating shelter caseload changed in FY15 from an average daily number of contracted units (minus vacancies) to an end-of-the-month count of occupied shelter units using DHCD's bed registry.

Children Served

Age Range	Oct-20		Sep-20		FY21 Monthly Average	
	# Children	% Children	Number	Percent	Number	Percent
Total	5,862	100%	5,874	100%	5,933	100%
0-2 yrs.	1,200	20%	1,212	21%	1,226	21%
3-4 yrs.	792	14%	792	13%	791	13%
5-8 yrs.	1,410	24%	1,399	24%	1,404	24%
9-11 yrs.	883	15%	897	15%	915	15%
12-14 yrs.	729	12%	709	12%	730	12%
15-18 yrs.	675	12%	688	12%	693	12%
19-20 yrs.	173	3%	177	3%	176	3%

Note: Data indicate children active in EA shelters or hotels at end of the month.

EA Exits

Families Exiting Shelter and Hotels/Motels	Oct-20		Sep-20		FY21 YTD	
	Number	Percent	Number	Percent	Number	Percent
Total Exits	173	100%	168	100%	737	100%
Abandoned	20	12%	17	10%	81	11%
Criminal Activity	0	0%	1	1%	1	<1%
Feasible Alternative Housing with HB	111	64%	121	72%	489	66%
Feasible Alternative Housing without HB	23	13%	19	11%	99	13%
Ineligible	4	2%	1	1%	12	2%
Rejected Placement	1	1%	0	0%	3	<1%
Noncompliance	0	0%	0	0%	1	<1%
Temporary Shelter Interruption	14	8%	9	5%	51	7%
Other/Unknown	0	0%	0	0%	0	0%

Notes:

Families terminated from shelter for abandoning their placements or non-compliance may return to the system pending an appeal.

Families receiving a Temporary Shelter Interruption may return to the system within 30 days.

Types of Subsidies	Oct-20		Sep-20		FY21 YTD	
	Number	Percent	Number	Percent	Number	Percent
Total Families Receiving Subsidies	125	100%	134	100%	545	100%
ESG	0	0%	0	0%	0	0%
HomeBASE	111	89%	121	90%	489	90%
HUD CoC	3	2%	2	1%	10	2%
MRVP	4	3%	0	0%	13	2%
Private Subsidized Housing	12	10%	10	7%	45	8%
Section 8 Mobile Voucher	42	34%	57	43%	208	38%
Section 8 Project-Based Voucher	1	1%	11	8%	24	4%
Other Public Housing	13	10%	9	7%	42	8%
Transportation	4	3%	1	1%	6	1%

Notes:

Families may receive multiple subsidy types. Therefore, the sum of the subsidy types do not equal the number of families.

Data based on date of shelter/hotel exit. HomeBASE data based on the date that checks are issued may vary.

DHCD - EA Monthly Report

Oct-20

	Oct #	Oct %	Sep #	FY21 YTD	
Families Applying for EA					
Total	372	100%	322	1,544	100%
Boston	123	33%	85	433	28%
Central Mass	32	9%	24	129	8%
North Shore	81	22%	79	399	26%
South Shore	47	13%	59	258	17%
Western Mass	89	24%	75	325	21%
Families Placed in EA Shelter and Hotels/Motels					
Total	188	100%	162	627	100%
Boston	70	37%	71	264	42%
Central Mass	20	11%	17	69	11%
North Shore	25	13%	22	88	14%
South Shore	45	24%	32	116	19%
Western Mass	28	15%	20	90	14%
HomeBASE Entries (Diversion and Exits)					
Total	123	100%	175	624	100%
Berkshire Housing	3	2%	2	12	2%
Community Teamwork, Inc.	7	6%	11	48	8%
Franklin County	0	0%	0	0	0%
Housing Assistance Corp.	2	2%	7	14	2%
Way Finders	23	19%	27	99	16%
Metro Housing Boston	49	40%	81	275	44%
RCAP Solutions	0	0%	1	7	1%
South Middlesex Opportunity Council	8	7%	8	31	5%
NeighborWorks Housing Solutions	21	17%	24	92	15%
Lynn Housing Authority	4	3%	10	30	5%
Central MA Housing Alliance	6	5%	4	16	3%

DHCD - EA Monthly Report, Cumulative Data
October 2020

Families Applying for EA	Jul	Aug	Sep	Oct	FY21 YTD #	FY21 YTD%
Total Families Applying	261	589	322	372	1,544	100%
Boston	45	180	85	123	433	28%
Central Mass	24	49	24	32	129	8%
North Shore	87	152	79	81	399	26%
South Shore	55	97	59	47	258	17%
Western Mass	50	111	75	89	325	21%
Health & Safety Assessment						
H&S Assessment Completed	95	100	126	168	489	100%
Families with H&S Risk	85	85	105	17*	275	56%
Families Placed in Shelter/Motels						
Total	116	161	162	188	627	100%
Families Placed in Hotels/Motels	0	1	0	0	1	0%
Presumptive Placement	60	71	62	73	266	42%
Boston	45	78	71	70	264	42%
Central Mass	13	19	17	20	69	11%
North Shore	16	25	22	25	88	14%
South Shore	19	20	32	45	116	19%
Western Mass	23	19	20	28	90	14%
Monthly Caseload (# of Families)	7/31/2019	8/31/2020	9/30/2020	10/31/2020	FY21 Monthly Average	
Total	2,996	2,933	2,898	2,894	2,930	
Shelter	2,985	2,922	2,887	2,882	2,919	
Hotel/Motel	11	11	11	12	11	
Children Served	Jul	Aug	Sep	Oct	FY21 Monthly Average	FY21 %
Total	6,048	5,948	5,874	5,862	5,933	100%
0-2 yrs.	1,252	1,239	1,212	1,200	1,226	21%
3-4 yrs.	798	783	792	792	791	13%
5-8 yrs.	1,411	1,395	1,399	1,410	1,404	24%
9-11 yrs.	948	931	897	883	915	15%
12-14 yrs.	748	732	709	729	730	12%
15-18 yrs.	709	698	688	675	693	12%
19-20 yrs.	182	170	177	173	176	3%

	Jul	Aug	Sep	Oct	FY21 Monthly Average	
Placement to Application Ratio	51%	31%	57%	55%	46%	
Reasons for Homelessness, Shelter/Motels	Jul	Aug	Sep	Oct	FY20 #	FY20 %
Total Placements	116	161	162	188	627	100%
Domestic Violence	25	40	32	43	140	22%
Fire/Natural Disaster	2	3	2	4	11	2%
Evict: Condemnation	0	1	1	1	3	<1%
Evict: Excused Conduct	0	0	0	0	0	0%
Evict: Foreclosure	0	0	0	0	0	0%
Evict: Non Payment - Medical	0	0	0	0	0	0%
Evict: Non Payment - Disability	0	0	0	0	0	0%
Evict: Non Payment - Income Loss	0	1	0	1	2	<1
Evict: Non Renewal of Tenancy	1	0	1	1	3	0%
Threatened Evict - Unauthorized Tenant	6	7	24	17	54	9%
H&S: Violent Conduct	1	4	2	4	11	2%
H&S: Mental Illness	2	3	3	1	9	1%
H&S: Substance Abuse	0	2	1	2	5	1%
H&S: Conditions in Unit	6	2	0	1	9	1%
H&S: Irregular Housing situation	55	56	57	79	247	39%
H&S: Not Meant for Human Habitation	13	36	28	25	102	16%
Aid Pending	1	2	6	4	13	2%
Replacement/TESI	4	4	5	5	18	3%
Shelter and Hotel/Motel Exits						
Total	194	202	168	173	737	100%
Abandoned	20	24	17	20	81	11%
Criminal Activity/Fraud	0	0	1	0	1	<1%
Feasible Alternative Housing with HB	130	127	121	111	489	66%
Feasible Alternative Housing without HB	28	29	19	23	99	13%
Ineligible	5	2	1	4	12	2%
No Show/Rejected Placement	0	2	0	1	3	<1%
NonCompliance/Termination for Cause	0	1	0	0	1	<1%
Temporary Shelter Interruption	11	17	9	14	51	7%
Other/Unknown	0	0	0	0	0	0%

Hotel/Motel Exits	Jul	Aug	Sep	Oct	FY21 YTD #	FY21 YTD%
Total Exits	0	1	0	0	1	
Abandoned	0	0	0	0	0	
Criminal Activity	0	0	0	0	0	
Feasible Alternative Housing with HB	0	1	0	0	1	
Feasible Alternative Housing without HB	0	0	0	0	0	
Ineligible	0	0	0	0	0	
No Show/Rejected Placement	0	0	0	0	0	
NonCompliance/Termination for Cause	0	0	0	0	0	
Temporary Shelter Interruption	0	0	0	0	0	
Other/Unknown	0	0	0	0	0	
Types of Subsidies at Exit						
Total Families Receiving Subsidies	141	145	134	125	545	100%
ESG	0	0	0	0	0	0%
HomeBASE	130	127	121	111	489	90%
HUD CoC	3	2	2	3	10	2%
MRVP	3	6	0	4	13	2%
Private Subsidized Housing	13	10	10	12	45	8%
Section 8 Mobile Voucher	49	60	57	42	208	38%
Section 8 Project-Based Voucher	8	4	11	1	24	4%
Other Public Housing	5	15	9	13	42	8%
Transportation	0	1	1	4	6	1%
HomeBASE Entries (Diversion and Exits)						
Total	160	166	175	123	624	100%
Berkshire Housing	3	4	2	3	12	2%
Community Teamwork, Inc.	7	23	11	7	48	8%
Franklin County	0	0	0	0	0	0%
Housing Assistance Corp.	4	1	7	2	14	2%
Way Finders	24	25	27	23	99	16%
Metro Housing Boston	71	74	81	49	275	44%
RCAP Solutions	3	3	1	0	7	1%
South Middlesex Opportunity Council	6	9	8	8	31	5%
NeighborWorks Housing Solutions	27	20	24	21	92	15%
Lynn Housing Authority	11	5	10	4	30	5%
Central MA Housing Alliance	4	2	4	6	16	3%

HomeBASE Diversion by Region	Jul	Aug	Sep	Oct	FY21 YTD #	FY21 YTD%
Total	16	21	23	16	76	100%
Berkshire Housing	0	0	0	0	0	0%
Community Teamwork, Inc.	3	10	5	3	21	28%
Franklin County	0	0	0	0	0	0%
Housing Assistance Corp.	3	0	3	1	7	9%
Way Finders	1	4	6	4	15	20%
Metro Housing Boston	1	0	2	2	5	7%
RCAP Solutions	0	0	0	0	0	0%
South Middlesex Opportunity Council	0	0	1	1	2	0%
NeighborWorks Housing Solutions	6	7	6	4	23	30%
Lynn Housing Authority	2	0	0	0	2	3%
Central MA Housing Alliance	0	0	0	1	1	1%
HomeBASE Shelter Exits by Region						
Total	144	145	152	107	548	100%
Berkshire Housing	3	4	2	3	12	2%
Community Teamwork, Inc.	4	13	6	4	27	5%
Franklin County	0	0	0	0	0	0%
Housing Assistance Corp.	1	1	4	1	7	1%
Way Finders	23	21	21	19	84	15%
Metro Housing Boston	70	74	79	47	270	49%
RCAP Solutions	3	3	1	0	7	1%
South Middlesex Opportunity Council	6	9	7	7	29	5%
NeighborWorks Housing Solutions	21	13	18	17	69	13%
Lynn Housing Authority	9	5	10	4	28	5%
Central MA Housing Alliance	4	2	4	5	15	3%
HomeBASE Hotel Exits by Region						
Total	0	0	0	0	0	
Berkshire Housing	0	0	0	0	0	
Community Teamwork, Inc.	0	0	0	0	0	
Franklin County	0	0	0	0	0	
Housing Assistance Corp.	0	0	0	0	0	
Way Finders	0	0	0	0	0	
Metro Housing Boston	0	0	0	0	0	
RCAP Solutions	0	0	0	0	0	
South Middlesex Opportunity Council	0	0	0	0	0	
NeighborWorks Housing Solutions	0	0	0	0	0	
Lynn Housing Authority	0	0	0	0	0	
Central MA Housing Alliance	0	0	0	0	0	

*Data for 146 families referred for Health and Safety Assessments in October was not available at time of reporting.