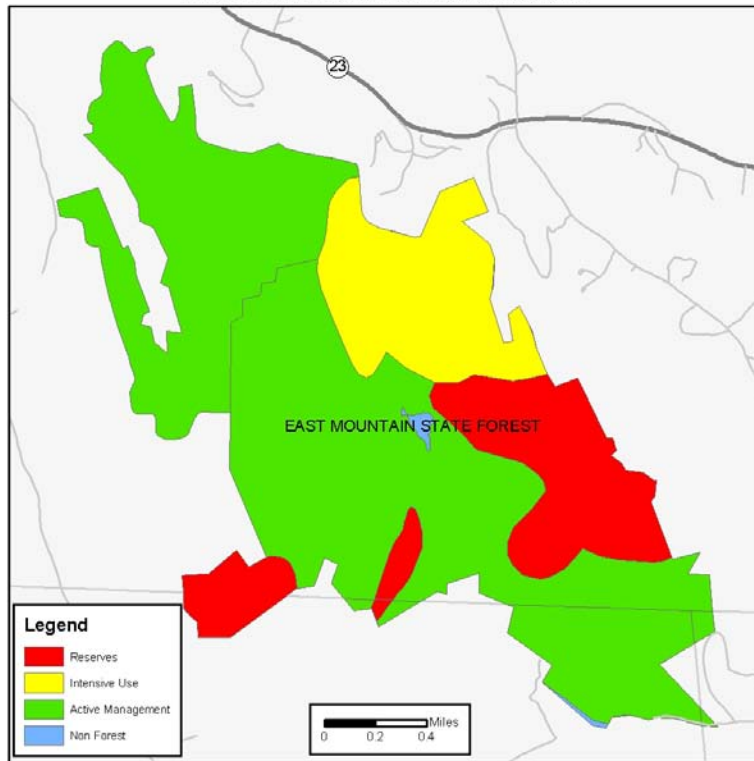


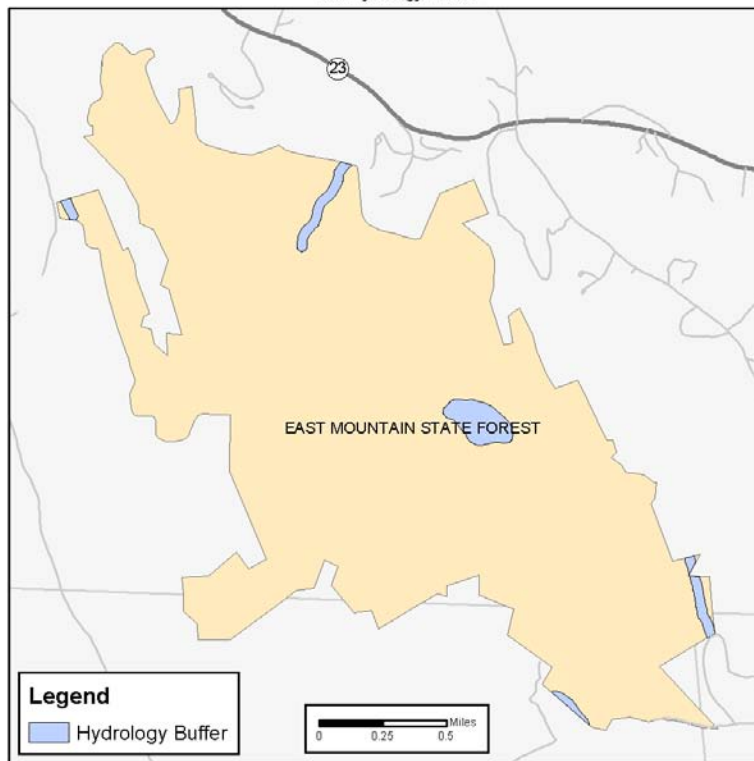
## **Appendix B – Property Maps**

- 37. East Mountain State Forest – Reserves, Intensive Use and Active Management Areas
- 38. East Mountain State Forest – Hydrology Buffers
- 39. East Mountain State Forest – Road and Trail Corridors
- 40. East Mountain State Forest – Rare Species
- 41. East Mountain State Forest – Vegetation
- 42. East Mountain State Forest – Vegetation with Resource Overlays
- 43. East Mountain State Forest – Prime Soils
- 44. East Mountain State Forest – Archeologically Sensitive Areas
- 45. East Mountain State Forest – Potential Timber Harvests

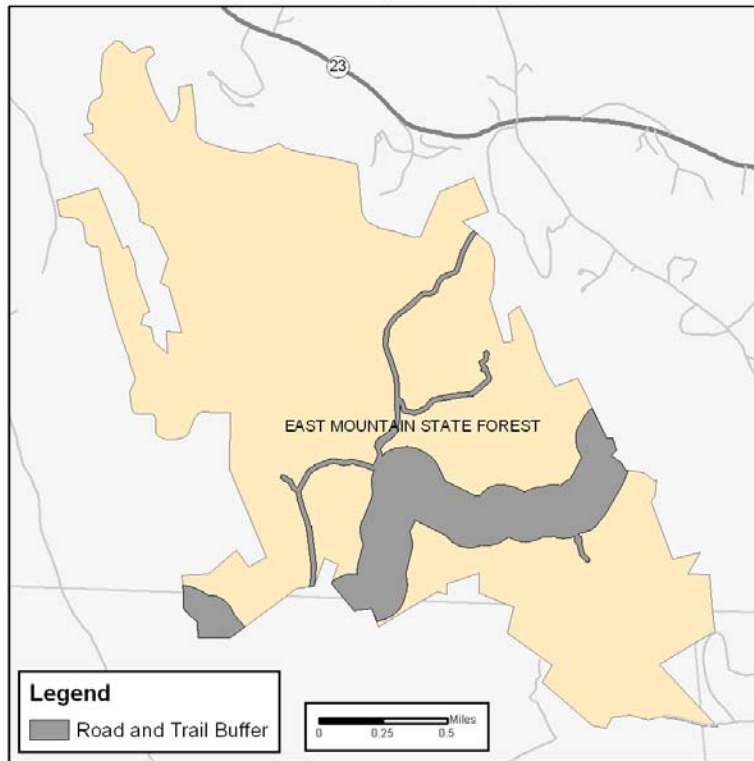
East Mountain State Forest  
Reserves, Intensive Use and Active Management Areas



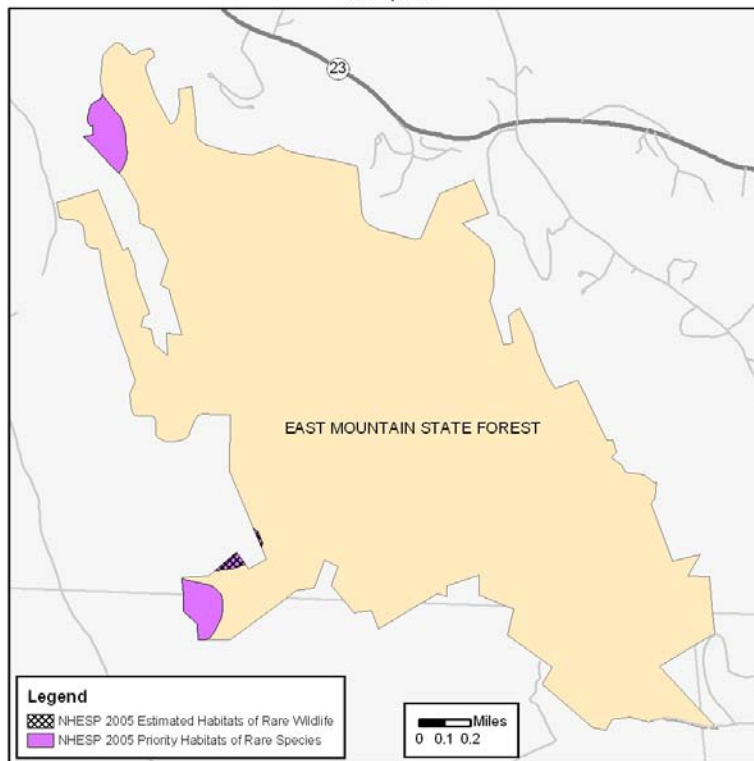
East Mountain State Forest  
100' Hydrology Buffers



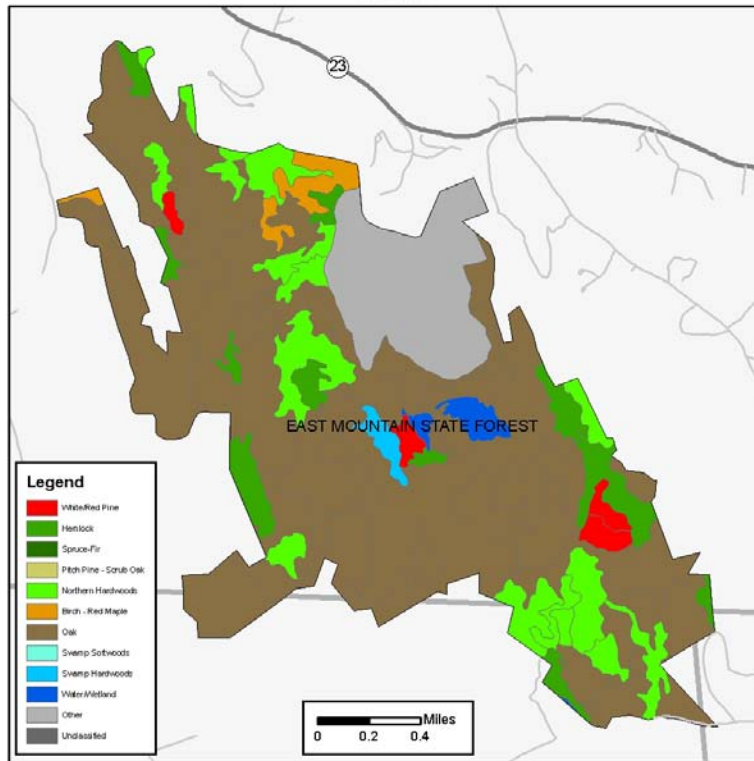
East Mountain State Forest  
50' Road and Trail Buffers (500' Appalachian Trail)



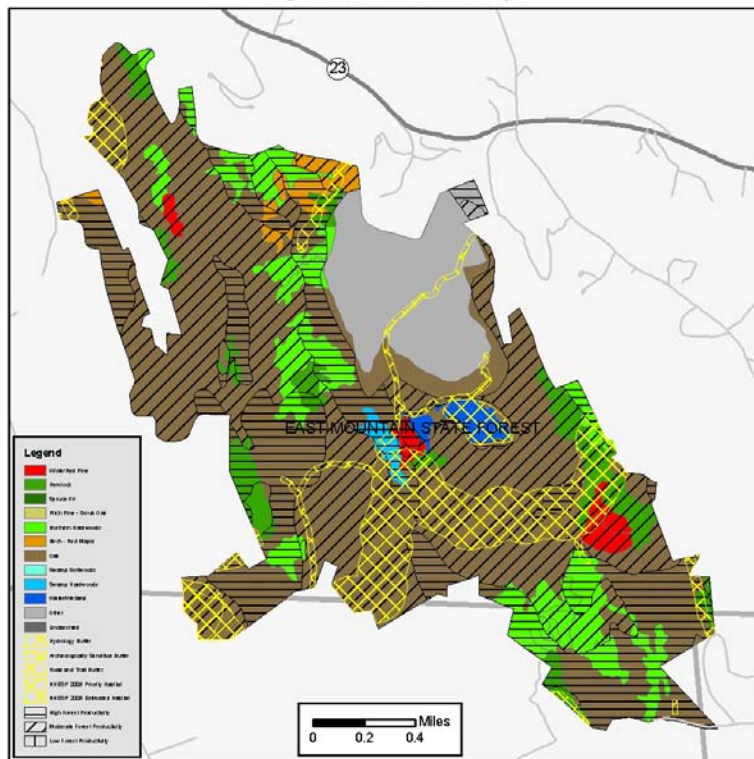
East Mountain State Forest  
Rare Species



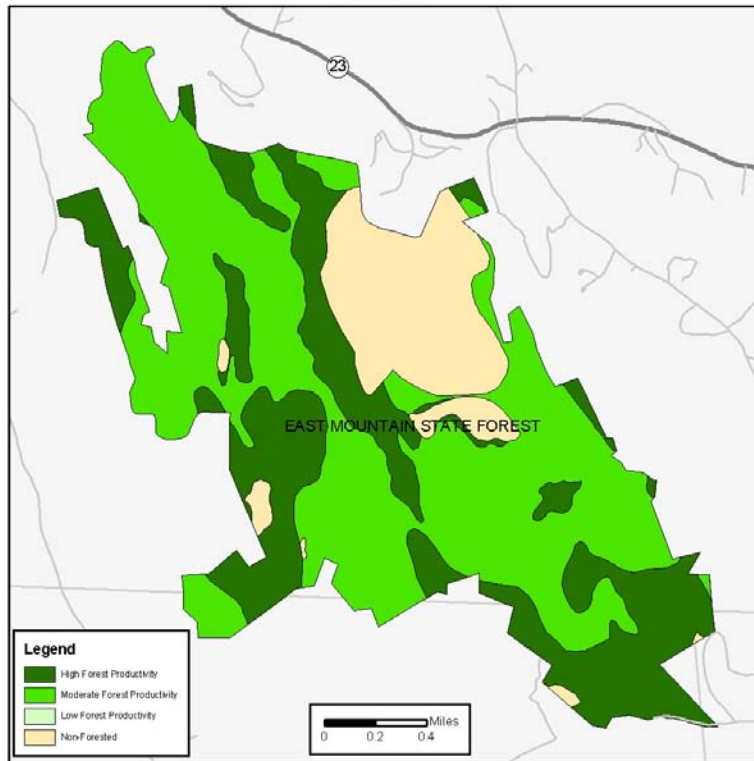
East Mountain State Forest  
Vegetation



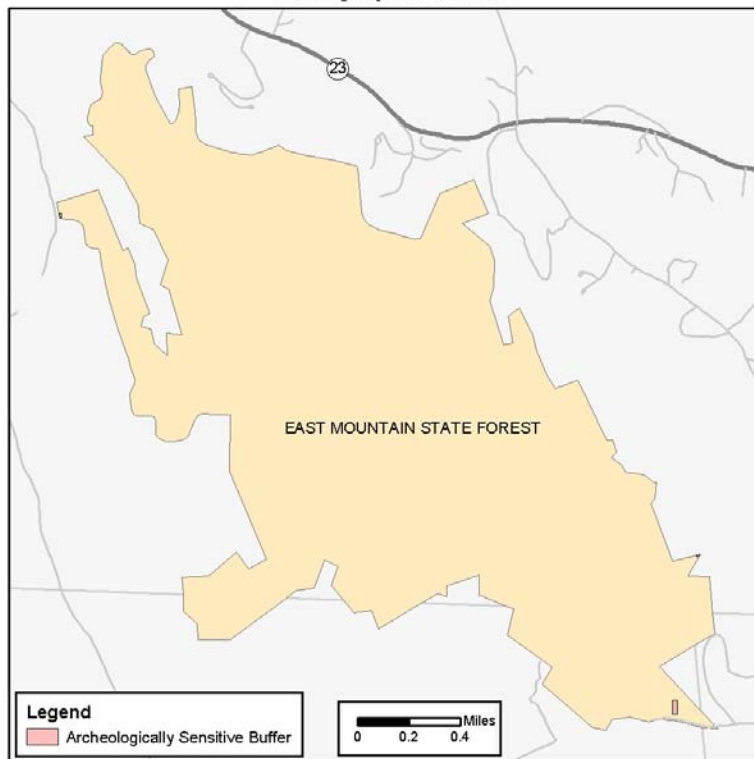
East Mountain State Forest  
Vegetation With Resource Overlays



East Mountain State Forest  
Prime Soils



East Mountain State Forest  
Archeologically Sensitive Buffers



East Mountain State Forest - Potential Timber Harvests Within Next 15 Years By Silvicultural Technique

