

INVENTORY FORM CONTINUATION SHEET

HUDSON

HUDSON DOWNTOWN

MASSACHUSETTS HISTORICAL COMMISSION

Area(s) Form No.

220 MORRISSEY BOULEVARD, BOSTON, MASSACHUSETTS 02125

A

(update June 2012)

The Hudson Downtown area consists of a well-preserved concentration of a variety of building types associated with a large 18th-early 20th century town center. At the center of the area, a dense municipal and commercial corridor extends east/west along Main Street, largely reconstructed in brick after an 1894 fire. North of Main Street, a number of 19th century dwellings extend to the north boundary of the area, and a small number of 19th century churches are located within the municipal core and residential portions of HUD.A. South of Main Street, a number of large manufacturing buildings line the Assabet River. A channel paralleling Houghton Street connects the Assabet River Bruce Pond, supporting a secondary manufacturing complex on the south side of Bruce Pond north of Main Street. A rail trail has been established south of Main Street, with access to the Assabet River.

The town center still functions as the heart of the town, which continues to support a mixture of commercial and municipal activities. Buildings are generally well-maintained and well-preserved, with some modern infill and vacant lots along the north/south streets that cross Main Street.

INVENTORY FORM CONTINUATION SHEET

HUDSON

HUDSON DOWNTOWN

MASSACHUSETTS HISTORICAL COMMISSION

220 MORRISSEY BOULEVARD, BOSTON, MASSACHUSETTS 02125

Area(s) Form No.

A



View along Manning Street from location of 58 Manning Street, facing S



View along Church Street, from location of 45 Church Street, facing SE

INVENTORY FORM CONTINUATION SHEET

HUDSON

HUDSON DOWNTOWN

MASSACHUSETTS HISTORICAL COMMISSION

220 MORRISSEY BOULEVARD, BOSTON, MASSACHUSETTS 02125

Area(s) Form No.

A



View along Church Street from intersection of Cross Street, facing S



View along Pope Street from intersection of Pleasant Street, facing S

INVENTORY FORM CONTINUATION SHEET

HUDSON

HUDSON DOWNTOWN

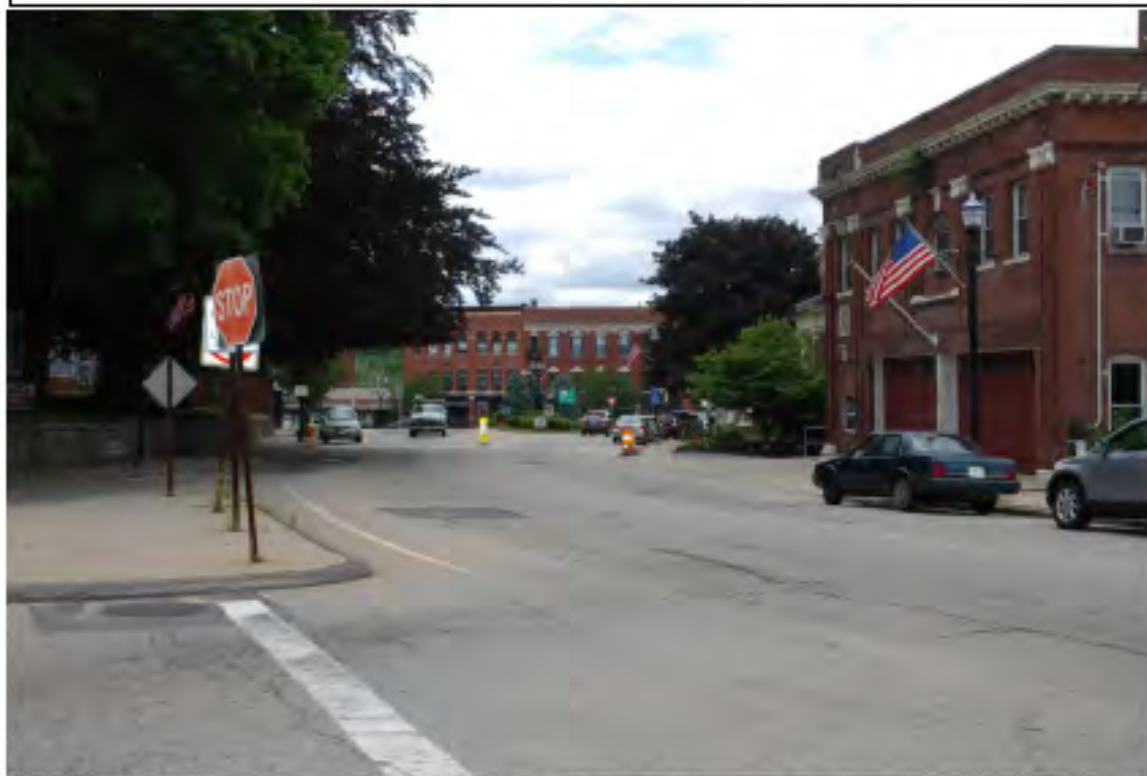
MASSACHUSETTS HISTORICAL COMMISSION
220 MORRISSEY BOULEVARD, BOSTON, MASSACHUSETTS 02125

Area(s) Form No.

A



View along Felton Street from location of 28 Felton Street, facing S



View of commercial and municipal center from intersection of Lincoln Street and Central Street, facing S

INVENTORY FORM CONTINUATION SHEET

HUDSON

HUDSON DOWNTOWN

MASSACHUSETTS HISTORICAL COMMISSION

220 MORRISSEY BOULEVARD, BOSTON, MASSACHUSETTS 02125

Area(s) Form No.

A



View along Main Street from intersection of Felton Street, facing E



View along Felton Street from intersection of Main Street, facing N

INVENTORY FORM CONTINUATION SHEET

HUDSON

HUDSON DOWNTOWN

MASSACHUSETTS HISTORICAL COMMISSION

220 MORRISSEY BOULEVARD, BOSTON, MASSACHUSETTS 02125

Area(s) Form No.

A



View along Main Street from intersection of Pope Street, facing E



View along Pope Street from location of 31 Pope Street, facing S

INVENTORY FORM CONTINUATION SHEET

HUDSON

HUDSON DOWNTOWN

MASSACHUSETTS HISTORICAL COMMISSION
220 MORRISSEY BOULEVARD, BOSTON, MASSACHUSETTS 02125

Area(s) Form No.

A



View of Church Street from location of 18 Church Street, facing S



View of secondary industrial area south of Bruce Pond, from Main Street, facing N

INVENTORY FORM CONTINUATION SHEET

HUDSON

HUDSON DOWNTOWN

MASSACHUSETTS HISTORICAL COMMISSION

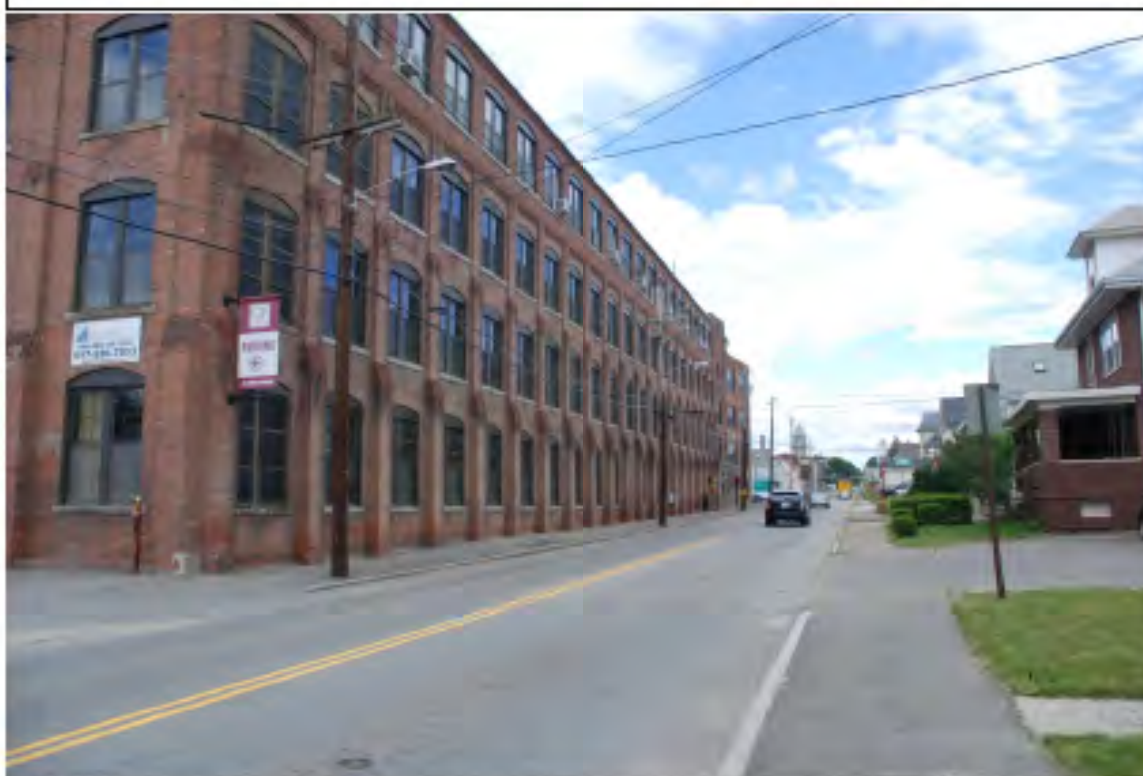
220 MORRISSEY BOULEVARD, BOSTON, MASSACHUSETTS 02125

Area(s) Form No.

A



View along Main Street from intersection of Manning Street, facing W



View along Broad Street from crossing of Assabet River, 33 Broad Street (no inventory #) on left, facing N

INVENTORY FORM CONTINUATION SHEET

HUDSON

HUDSON DOWNTOWN

MASSACHUSETTS HISTORICAL COMMISSION

220 MORRISSEY BOULEVARD, BOSTON, MASSACHUSETTS 02125

Area(s) Form No.

A



View along Washington Street from intersection of Park Street, facing NE

INVENTORY FORM CONTINUATION SHEET

HUDSON

14 LINCOLN STREET

MASSACHUSETTS HISTORICAL COMMISSION

Area(s) Form No.

220 MORRISSEY BOULEVARD, BOSTON, MASSACHUSETTS 02125

A	35
---	----

(update June 2012)

This house is very well-preserved with many original Italianate details intact, such as roof brackets, arched window hoods, quoins, and an elaborate entrance portico. Although the house fronts on Lincoln Street, the driveway is on Rice Street, and leads to a mid-20th century garage located northwest of the house.

INVENTORY FORM CONTINUATION SHEET

HUDSON

14 LINCOLN STREET

MASSACHUSETTS HISTORICAL COMMISSION
220 MORRISSEY BOULEVARD, BOSTON, MASSACHUSETTS 02125

Area(s) Form No.

A	35
---	----



View of 14 Lincoln Street, east façade and south elevation, facing NW



View of 14 Lincoln Street, east façade and north elevation, facing SW

INVENTORY FORM CONTINUATION SHEET

HUDSON

14 LINCOLN STREET

MASSACHUSETTS HISTORICAL COMMISSION
220 MORRISSEY BOULEVARD, BOSTON, MASSACHUSETTS 02125

Area(s) Form No.

A	35
---	----



View of 14 Lincoln Street garage, facing NW

INVENTORY FORM CONTINUATION SHEET

HUDSON

34 POPE STREET

MASSACHUSETTS HISTORICAL COMMISSION

Area(s) Form No.

220 MORRISSEY BOULEVARD, BOSTON, MASSACHUSETTS 02125

A	24
---	----

(update June 2012)

The former Boston & Maine RR station, built originally for the Central Massachusetts Railroad, is assigned the MHC # of HUD.24, but is also within the Hudson-Assabet River Area, HUD.A. The building has retained the same level of integrity since its original documentation on a MHC form.

INVENTORY FORM CONTINUATION SHEET

HUDSON

34 POPE STREET

MASSACHUSETTS HISTORICAL COMMISSION
220 MORRISSEY BOULEVARD, BOSTON, MASSACHUSETTS 02125

Area(s) Form No.

A

24



View facing NW



View facing NE

INVENTORY FORM CONTINUATION SHEET

HUDSON

29 Church Street

MASSACHUSETTS HISTORICAL COMMISSION

Area(s) Form No.

220 MORRISSEY BOULEVARD, BOSTON, MASSACHUSETTS 02125

A	25
---	----

(update June 2012)

The building, used as a senior community center since at least 1978 when it was originally recorded on an inventory form, has no visible changes.

INVENTORY FORM CONTINUATION SHEET

HUDSON

29 Church Street

MASSACHUSETTS HISTORICAL COMMISSION

220 MORRISSEY BOULEVARD, BOSTON, MASSACHUSETTS 02125

Area(s) Form No.

A

25



Facing SE

INVENTORY FORM CONTINUATION SHEET
MANNING ROAD

HUDSON

BRUCE'S POND NEAR

MASSACHUSETTS HISTORICAL COMMISSION
220 MORRISSEY BOULEVARD, BOSTON, MASSACHUSETTS 02125

Area(s) Form No.

A	906
---	-----

(update June 2012)

The bridge is in fair condition, but is no longer in active use. It has not received any visible changes since its initial documentation on an inventory form in 1987.

INVENTORY FORM CONTINUATION SHEET
MANNING ROAD

HUDSON

BRUCE'S POND NEAR

MASSACHUSETTS HISTORICAL COMMISSION
220 MORRISSEY BOULEVARD, BOSTON, MASSACHUSETTS 02125

Area(s) Form No.

A

906



Facing E



Facing N

INVENTORY FORM CONTINUATION SHEET

HUDSON

Over Assabet River

MASSACHUSETTS HISTORICAL COMMISSION

Area(s) Form No.

220 MORRISSEY BOULEVARD, BOSTON, MASSACHUSETTS 02125

	907
--	-----

(update June 2012)

Since its original documentation in 1987, the Asset River Railroad Bridge has not been visibly changed.

INVENTORY FORM CONTINUATION SHEET

HUDSON

Over Assabet River

MASSACHUSETTS HISTORICAL COMMISSION
220 MORRISSEY BOULEVARD, BOSTON, MASSACHUSETTS 02125

Area(s) Form No.

907



Facing NE



Facing N

INVENTORY FORM CONTINUATION SHEET

HUDSON

Over Assabet River

MASSACHUSETTS HISTORICAL COMMISSION

220 MORRISSEY BOULEVARD, BOSTON, MASSACHUSETTS 02125

Area(s) Form No.

907



Facing N

INVENTORY FORM CONTINUATION SHEET

HUDSON

MBTA ROW Over Fort

Meadow Brook

MASSACHUSETTS HISTORICAL COMMISSION

220 MORRISSEY BOULEVARD, BOSTON, MASSACHUSETTS 02125

Area(s) Form No.

	908
--	-----

(update June 2012)

Since its original documentation in 1987, the Fort Meadow Brook Bridge has seen no visible change.

INVENTORY FORM CONTINUATION SHEET

Meadow Brook

HUDSON

MBTA ROW Over Fort

MASSACHUSETTS HISTORICAL COMMISSION
220 MORRISSEY BOULEVARD, BOSTON, MASSACHUSETTS 02125

Area(s) Form No.

908



Facing W



Facing NW

Continuation sheet 2

INVENTORY FORM CONTINUATION SHEET

HUDSON

31 PARMENTER ROAD

MASSACHUSETTS HISTORICAL COMMISSION

Area(s) Form No.

220 MORRISSEY BOULEVARD, BOSTON, MASSACHUSETTS 02125

	108
--	-----

(update June 2012)

Except for a split wood rail fence bordering the property along Parmenter Road, there are no visible changes to the property since its original recordation on an inventory form in 1975.

INVENTORY FORM CONTINUATION SHEET

HUDSON

31 PARMENTER ROAD

MASSACHUSETTS HISTORICAL COMMISSION

220 MORRISSEY BOULEVARD, BOSTON, MASSACHUSETTS 02125

Area(s) Form No.

108



Facing W

INVENTORY FORM CONTINUATION SHEET

SUDBURY

MASSACHUSETTS HISTORICAL COMMISSION
220 MORRISSEY BOULEVARD, BOSTON, MASSACHUSETTS 02125

Area(s) Form No.

	901
--	-----

(update June 2012)

The bridge displays no visible changes since its initial recordation in 1987.

INVENTORY FORM CONTINUATION SHEET

SUDBURY

MASSACHUSETTS HISTORICAL COMMISSION
220 MORRISSEY BOULEVARD, BOSTON, MASSACHUSETTS 02125

Area(s) Form No.

901



Facing N



Facing SE

INVENTORY FORM CONTINUATION SHEET

SUDBURY

MASSACHUSETTS HISTORICAL COMMISSION
220 MORRISSEY BOULEVARD, BOSTON, MASSACHUSETTS 02125

Area(s) Form No.

901



Facing NE

INVENTORY FORM CONTINUATION SHEET

WAYLAND

MASSACHUSETTS HISTORICAL COMMISSION
220 MORRISSEY BOULEVARD, BOSTON, MASSACHUSETTS 02125

Area(s) Form No.

	916
--	-----

(update June 2012)

The bridge has had no visible changes since its original recordation on an inventory form in 1987.

INVENTORY FORM CONTINUATION SHEET

WAYLAND

MASSACHUSETTS HISTORICAL COMMISSION
220 MORRISSEY BOULEVARD, BOSTON, MASSACHUSETTS 02125

Area(s) Form No.

916



Facing S



Facing S

INVENTORY FORM CONTINUATION SHEET

WAYLAND

397 BOSTON POST ROAD

MASSACHUSETTS HISTORICAL COMMISSION

220 MORRISSEY BOULEVARD, BOSTON, MASSACHUSETTS 02125

Area(s) Form No.

	77
--	----

(update June 2012)

This house contained a number of alterations at the time the original inventory form was prepared, including apparent changes in fenestration and the addition of Italianate door hoods supported by carved brackets. Since the date of the inventory form, the façade entrance along Boston Post Road, along with the door hood, has been removed and the house covered in vinyl siding. The 6/6 wood sash windows shown in the original photograph have also been replaced, with vinyl sash windows.

INVENTORY FORM CONTINUATION SHEET

WAYLAND

397 BOSTON POST ROAD

MASSACHUSETTS HISTORICAL COMMISSION

220 MORRISSEY BOULEVARD, BOSTON, MASSACHUSETTS 02125

Area(s) Form No.

77



397 Boston Post Road (WAY.77), west facade, facing SE

INVENTORY FORM CONTINUATION SHEET

WAYLAND

5 Concord Road

MASSACHUSETTS HISTORICAL COMMISSION

Area(s) Form No.

220 MORRISSEY BOULEVARD, BOSTON, MASSACHUSETTS 02125

	33
--	----

(update June 2012)

No visible changes since the original recordation on an inventory form in 1974.

INVENTORY FORM CONTINUATION SHEET

WAYLAND

5 Concord Road

MASSACHUSETTS HISTORICAL COMMISSION
220 MORRISSEY BOULEVARD, BOSTON, MASSACHUSETTS 02125

Area(s) Form No.

33



Facing NE



Facing NE

INVENTORY FORM CONTINUATION SHEET

WESTON

LOWER CONANT ROAD

MASSACHUSETTS HISTORICAL COMMISSION

220 MORRISSEY BOULEVARD, BOSTON, MASSACHUSETTS 02125

Area(s) Form No.

G

(update June 2012)

This area consists primarily of large parcels along Conant Road, with houses generally set back onto the properties, with smaller parcels and higher density along the side streets of Gowell Lane and Woodward Lane (private). Dense tree cover along Conant Road obstructs views of most of the houses. Gowell Lane is a cul-de-sac, with most houses located along the northwest side of the road. A number of mature trees are visible in side and rear yards. Along Gowell Lane, houses located at the southwest end of the road exhibit few alterations, while replacement siding, window sash, and added fronts are more prevalent on houses located at the northeast end of the road.

INVENTORY FORM CONTINUATION SHEET

WESTON

LOWER CONANT ROAD

MASSACHUSETTS HISTORICAL COMMISSION

220 MORRISSEY BOULEVARD, BOSTON, MASSACHUSETTS 02125

Area(s) Form No.

G



View along Conant Road from north boundary of area, 42 Conant Road (WSN.442) visible in background, facing S



View along Conant Road from intersection with Gowell Lane, 25 Conant Road (WSN.436) visible on right, facing N

INVENTORY FORM CONTINUATION SHEET

WESTON

LOWER CONANT ROAD

MASSACHUSETTS HISTORICAL COMMISSION

220 MORRISSEY BOULEVARD, BOSTON, MASSACHUSETTS 02125

Area(s) Form No.

G



View along Gowell Lane, southwest end, facing NE



View along Gowell Lane, northeast end, facing SW

INVENTORY FORM CONTINUATION SHEET

STREET ON MBTA ROW

WESTON

Below CHURCH

MASSACHUSETTS HISTORICAL COMMISSION

220 MORRISSEY BOULEVARD, BOSTON, MASSACHUSETTS 02125

Area(s) Form No.

	251
--	-----

(update June 2012)

This station appears little altered since the original 1994 inventory form, and is in excellent condition. Although the building is vacant, a resident reported that it had been used as a residence recently.

INVENTORY FORM CONTINUATION SHEET

STREET ON MBTA ROW

WESTON

Below CHURCH

MASSACHUSETTS HISTORICAL COMMISSION

220 MORRISSEY BOULEVARD, BOSTON, MASSACHUSETTS 02125

Area(s) Form No.

251



View of railroad station, south façade and west elevation, facing northeast



View of railroad station, north platform and east elevation, Church Street overpass (WSN.945) in background, facing W

INVENTORY FORM CONTINUATION SHEET

& M RR crossing (MBTA ROW)

MASSACHUSETTS HISTORICAL COMMISSION

220 MORRISSEY BOULEVARD, BOSTON, MASSACHUSETTS 02125

WESTON

Church Street over B

Area(s) Form No.

945

(update June 2012)

There are no visible changes to the bridge since its documentation on an inventory form in 1990. The 1990 form states that bridge is within WSN.D, but this does not appear to be the case.

INVENTORY FORM CONTINUATION SHEET

& M RR crossing (MBTA ROW)

MASSACHUSETTS HISTORICAL COMMISSION

220 MORRISSEY BOULEVARD, BOSTON, MASSACHUSETTS 02125

WESTON

Church Street over B

Area(s) Form No.

945



Facing



WNS.945 (Church St. Bridge with former railroad station (WSN.249) in front, facing W

INVENTORY FORM CONTINUATION SHEET

WESTON

72 CHURCH STREET

MASSACHUSETTS HISTORICAL COMMISSION

Area(s) Form No.

220 MORRISSEY BOULEVARD, BOSTON, MASSACHUSETTS 02125

	249
--	-----

(update June 2012)

This house appears little altered since the original 1995 inventory form, and is in excellent condition.

INVENTORY FORM CONTINUATION SHEET

WESTON

72 CHURCH STREET

MASSACHUSETTS HISTORICAL COMMISSION

220 MORRISSEY BOULEVARD, BOSTON, MASSACHUSETTS 02125

Area(s) Form No.

249



View of 72 Church Street, southeast façade and southwest elevation, facing north



View of 72 Church Street, southeast façade and northeast elevation, facing W

INVENTORY FORM CONTINUATION SHEET

WESTON

MASSACHUSETTS HISTORICAL COMMISSION
220 MORRISSEY BOULEVARD, BOSTON, MASSACHUSETTS 02125

Area(s) Form No.

	903
--	-----

(update June 2012)

There have been no changes to the structure since its recordation in 1987.

INVENTORY FORM CONTINUATION SHEET

WESTON

MASSACHUSETTS HISTORICAL COMMISSION
220 MORRISSEY BOULEVARD, BOSTON, MASSACHUSETTS 02125

Area(s) Form No.

903



Facing NW

INVENTORY FORM CONTINUATION SHEET

WESTON

MASSACHUSETTS HISTORICAL COMMISSION
220 MORRISSEY BOULEVARD, BOSTON, MASSACHUSETTS 02125

Area(s) Form No.

	904
--	-----

(update June 2012)

There have been no changes to the bridge since its original documentation on an inventory form in 1987.

INVENTORY FORM CONTINUATION SHEET

WESTON

MASSACHUSETTS HISTORICAL COMMISSION
220 MORRISSEY BOULEVARD, BOSTON, MASSACHUSETTS 02125

Area(s) Form No.

904



Facing W



Facing SW

INVENTORY FORM CONTINUATION SHEET

WESTON

MASSACHUSETTS HISTORICAL COMMISSION
220 MORRISSEY BOULEVARD, BOSTON, MASSACHUSETTS 02125

Area(s) Form No.

904



Underside of bridge, facing SW

INVENTORY FORM CONTINUATION SHEET

WALTHAM

MBTA ROW over I-95

MASSACHUSETTS HISTORICAL COMMISSION

Area(s) Form No.

220 MORRISSEY BOULEVARD, BOSTON, MASSACHUSETTS 02125

	918
--	-----

(update June 2012)

No changes to the bridge since its recordation on an inventory form in 1987.

INVENTORY FORM CONTINUATION SHEET

WALTHAM

MBTA ROW over I-95

MASSACHUSETTS HISTORICAL COMMISSION

220 MORRISSEY BOULEVARD, BOSTON, MASSACHUSETTS 02125

Area(s) Form No.

918



Facing SE



Facing SE

INVENTORY FORM CONTINUATION SHEET

WALTHAM ELSTON ROAD AT IRVING STREET

MASSACHUSETTS HISTORICAL COMMISSION

220 MORRISSEY BOULEVARD, BOSTON, MASSACHUSETTS 02125

Area(s) Form No.

	414
--	-----

(update June 2012)

Since its documentation on an inventory form in 1984, the building has received a new 1-story addition on the west side with a deck atop it.

INVENTORY FORM CONTINUATION SHEET

WALTHAM ELSTON ROAD AT IRVING STREET

MASSACHUSETTS HISTORICAL COMMISSION
220 MORRISSEY BOULEVARD, BOSTON, MASSACHUSETTS 02125

Area(s) Form No.

414



Facing SW



Facing W

INVENTORY FORM CONTINUATION SHEET

WALTHAM ELSTON ROAD AT IRVING STREET

MASSACHUSETTS HISTORICAL COMMISSION
220 MORRISSEY BOULEVARD, BOSTON, MASSACHUSETTS 02125

Area(s) Form No.

414



Facing SE

INVENTORY FORM CONTINUATION SHEET

WALTHAM

CENTRAL SQUARE

MASSACHUSETTS HISTORICAL COMMISSION

Area(s) Form No.

220 MORRISSEY BOULEVARD, BOSTON, MASSACHUSETTS 02125

F

(update June 2012)

Although the multiple-family and single-family housing along Lexington Terrace retains integrity, several changes have been made to the manufacturing buildings originally recorded as part of WLT.F. The factory buildings on the north side of Ames Street, indicated as #26 and #28 on the original WLT.F map, (American Knitting Company, WLT.420; B.C. Ames Company Building, WLT.421) have been largely removed, as well as Ames Street itself. A recent one-story retail/office building has been constructed on the site of the American Knitting Company building (WLT.420), with a parking lot occupying the original location of Ames Street. One of the manufacturing buildings, or a portion thereof, is currently used as multiple-family housing on the north side of the property. A new building is currently under construction on the site of the B.C. Ames Company Building and the former east side of Ames Street.

In addition, several alterations have been made to the Reliance Garnetting Mills building (23 Summer Avenue, WLT.417). The fenestration along the west façade has been altered to accommodate smaller windows, and the original large multiple-paned windows have been replaced by three-pane vinyl sash windows. In the center of the façade, a one-bay entrance vestibule with a gable roof has been added to the front, and the building has recently been clad in vinyl siding.

Alterations to the residential structures primarily include replacement vinyl siding and vinyl sash windows.

INVENTORY FORM CONTINUATION SHEET

WALTHAM

CENTRAL SQUARE

MASSACHUSETTS HISTORICAL COMMISSION

220 MORRISSEY BOULEVARD, BOSTON, MASSACHUSETTS 02125

Area(s) Form No.

F



Lexington Avenue at Lexington Terrace, WLT.422 and portion of WLT.418, facing NE



View of east end of Lexington Terrace toward Lexington Avenue, facing W

INVENTORY FORM CONTINUATION SHEET

WALTHAM

CENTRAL SQUARE

MASSACHUSETTS HISTORICAL COMMISSION

220 MORRISSEY BOULEVARD, BOSTON, MASSACHUSETTS 02125

Area(s) Form No.

F



Houses at east end of Lexington Terrace, facing NE



North end of Summer Avenue, showing former site of B.C. Ames Building and beginning construction of new building, facing NW

INVENTORY FORM CONTINUATION SHEET

WALTHAM

CENTRAL SQUARE

MASSACHUSETTS HISTORICAL COMMISSION

220 MORRISSEY BOULEVARD, BOSTON, MASSACHUSETTS 02125

Area(s) Form No.

F



Lexington Avenue at former intersection of Ames Street, former site of American Knitting Company building on left, facing E



View of WLT.417, 23 Summer Avenue, facing SE.

INVENTORY FORM CONTINUATION SHEET

WALTHAM

23 Summer Avenue

MASSACHUSETTS HISTORICAL COMMISSION

Area(s) Form No.

220 MORRISSEY BOULEVARD, BOSTON, MASSACHUSETTS 02125

F

417

(update June 2012)

Several alterations have been made to this building. The fenestration along the west façade has been altered to accommodate smaller windows, and the original large multiple-paned windows have been replaced by three-pane vinyl sash windows. In the center of the façade, a one-bay entrance vestibule with a gable roof has been added to the front, and the building has recently been clad in vinyl siding. The nearby B.C. Ames Company and American Knitting Company manufacturing buildings have been removed.

INVENTORY FORM CONTINUATION SHEET

WALTHAM

23 Summer Avenue

MASSACHUSETTS HISTORICAL COMMISSION

Area(s) Form No.

220 MORRISSEY BOULEVARD, BOSTON, MASSACHUSETTS 02125

F

417



View of 23 Summer Avenue, west façade, facing NE



View of 23 Summer Avenue, west façade and north elevation, facing SE

INVENTORY FORM CONTINUATION SHEET

MBTA ROW

WALTHAM OVER CLEMATIS BROOK AT

MASSACHUSETTS HISTORICAL COMMISSION

220 MORRISSEY BOULEVARD, BOSTON, MASSACHUSETTS 02125

Area(s) Form No.

	919
--	-----

(update June 2012)

There have been no visible changes to the bridge since its original documentation on an inventory form in 1987.

INVENTORY FORM CONTINUATION SHEET

MBTA ROW

WALTHAM OVER CLEMATIS BROOK AT

MASSACHUSETTS HISTORICAL COMMISSION

220 MORRISSEY BOULEVARD, BOSTON, MASSACHUSETTS 02125

Area(s) Form No.

919



Facing SE