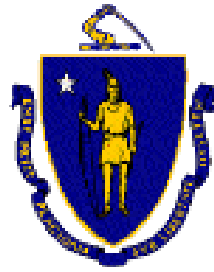


DCR's Historic Ellis Stone Storehouse Building Rehabilitation



DCR Public Meeting

28 November 2023, 6:00 p.m. – 7:30 pm



Commonwealth of Massachusetts

Governor

Maura T. Healy

Lieutenant Governor

Kimberly L. Driscoll

Energy and Environmental Secretary

Rebecca L. Tepper

Department of Conservation and Recreation Commissioner

Brian M. Arrigo



DCR Mission Statement

*To protect, promote and enhance our
common wealth of natural, cultural
and recreational resources for the
well being of all.*

Meeting Format

- Speakers will present the project, asking attendees to remain muted.
- During the Q&A period, ask questions using the chat feature, or raise your hand using the Zoom function.
- This public meeting will be recorded and posted after the meeting.

Purpose of Meeting

- Present preliminary design for rehabilitation of the Ellis Stone Storehouse

Agenda

- Introductions
- History of building
- Present existing conditions
- Project goals
- Logic for historic decisions
- Project timeline
- Questions and Answers, Discussion

Agenda

- **Introductions**
- History of building
- Present existing conditions
- Project goals
- Logic for historic decisions
- Project timeline
- Questions and Answers, Discussion

Introductions

Department of Conservation and Recreation:

Project Manager: Jeffrey Harris, Office of Cultural Resources

Design Team:

Simpson Gumpertz & Heger

Project Manager: Matthew Bronski

Project Engineer: Ellen Laase

DHK Architects

Project Manager: Wayne Gething

Project Architect: David Keith

Agenda

- Introductions
- **History of building**
- Present existing conditions
- Project goals
- Logic for historic decisions
- Project timeline
- Questions and Answers, Discussion

History of Ellis Stone Storehouse



Baylston St Bridge
Nov. 15 1905

1905 views during bridge/dam construction

History of Ellis Stone Storehouse



Agenda

- Introductions
- History of building
- **Present existing conditions**
- Project goals
- Logic for historic decisions
- Project timeline
- Questions and Answers, Discussion

Project Description

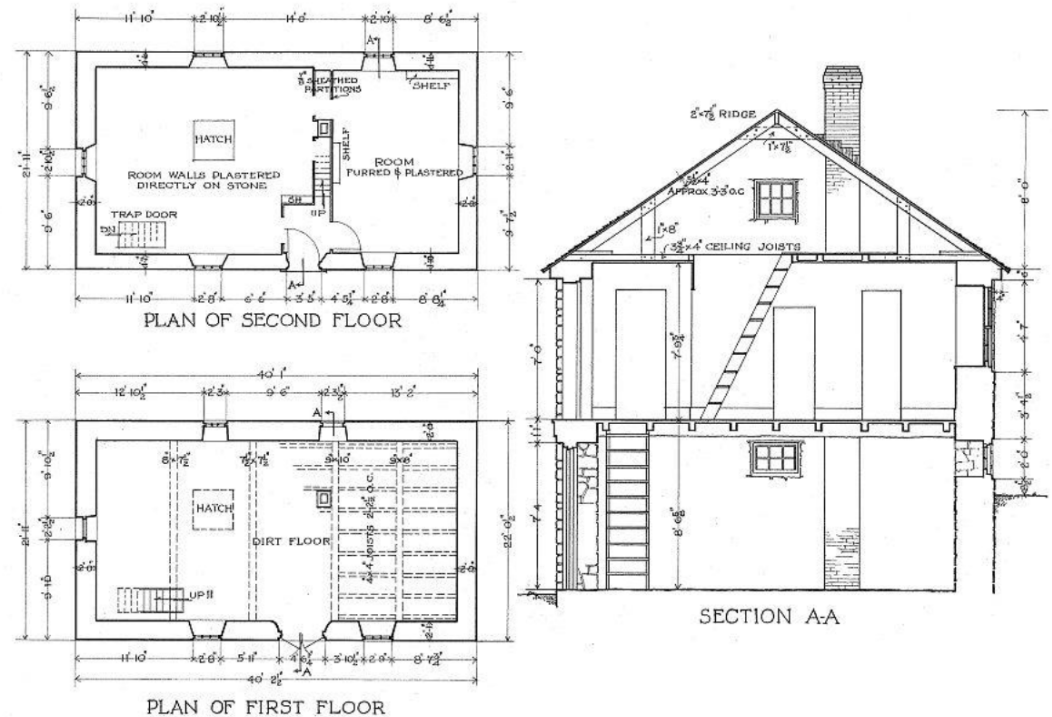
- Historic stone two-story storehouse within the Hemlock Gorge Reservation
- Construction date unknown, but estimated early 19th century (approximately 1809)



Site Description



Locus Plan



Historic Plans
and Section

Character of the Storehouse

- Large rubble stone walls
- Cedar shingle roofing
- Divided lite wood windows with wood shutters



Existing Conditions



- Eroded and non-matching mortar
- Missing chinking
- Missing cornerstone
- Cracked stones
- Graffiti and biological growth



- Deteriorated puddingstone ledge
- Water seepage into interior

Existing Conditions



- Bricked up window openings
- Makeshift wood frames and screens
- Non-historically-appropriate screens
- Electrical equipment, antenna, and lighting on facade

Agenda

- Introductions
- History of building
- Present existing conditions
- **Project goals**
- Logic for historic decisions
- Project timeline
- Questions and Answers, Discussion

Project Goal

- Restore storehouse's original beauty and integrity



Project Goal

- Restore exterior stone masonry
- Unbrick and restore original window openings and install historically-appropriate windows
- Restore lost shutters
- Remove clutter of electrical equipment and lighting



Existing



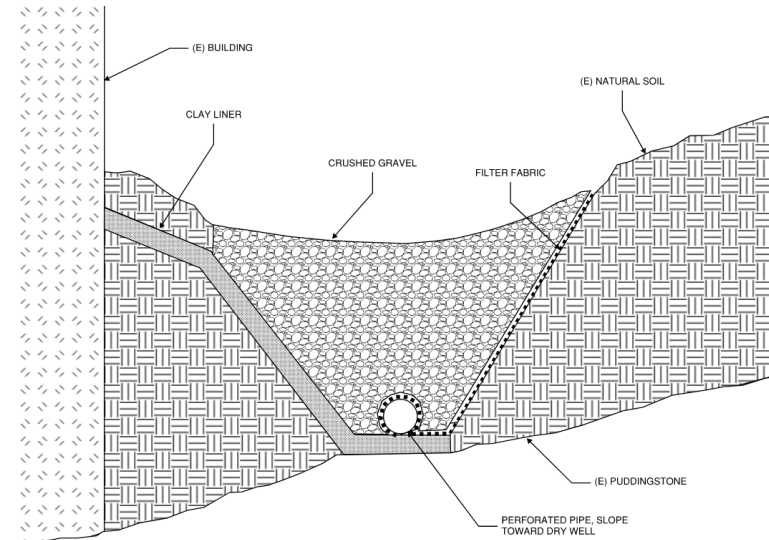
Proposed

Project Goal

- Address water infiltration through puddingstone foundation.
- Drainage swale completed in fall 2023.



West elevation



Conceptual Drainage Swale Design

Project Goal

- Remove the existing stairs to loft.
- Existing wooden historical loft floor hatch shall remain and be fastened to the wall in an open position.



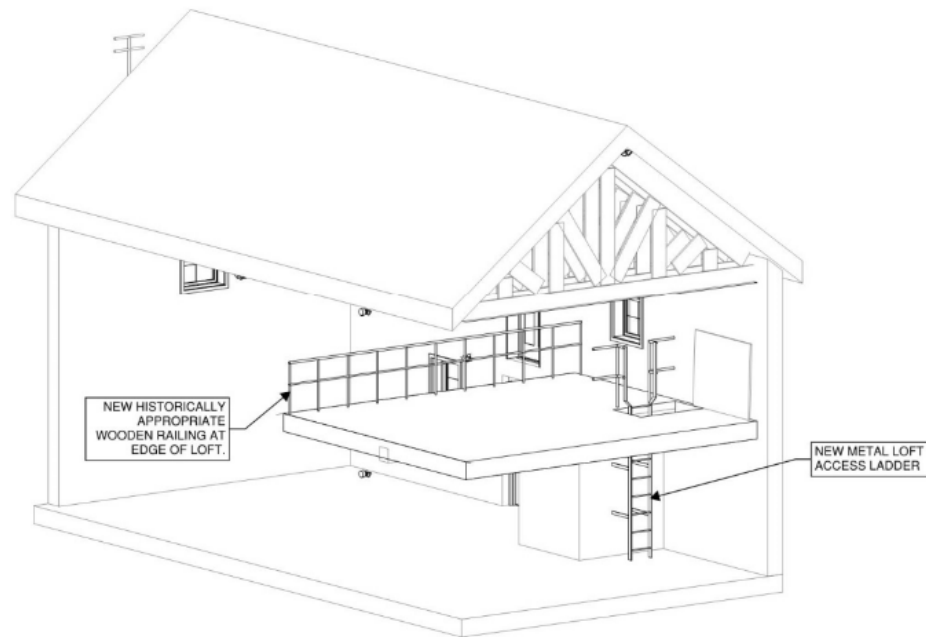
Existing stairs to loft.



Existing floor hatch to remain.

Project Goal

- A new ladder for loft access shall be installed on the rear CMU wall of the existing Utility Closet.
- A new full length and historically appropriate railing shall be installed at the edge of the loft.



Agenda

- Introductions
- History of building
- Present existing conditions
- Project goals
- **Logic for historic decisions**
- Project timeline
- Questions and Answers, Discussion

Historic Decisions: Mortar

- Construction date estimated as early 19th century
- Chose a flat, recessed mortar profile to match existing mortar
- Chose an appropriate mortar (Type N) per the US Secretary for the Interior's Standards



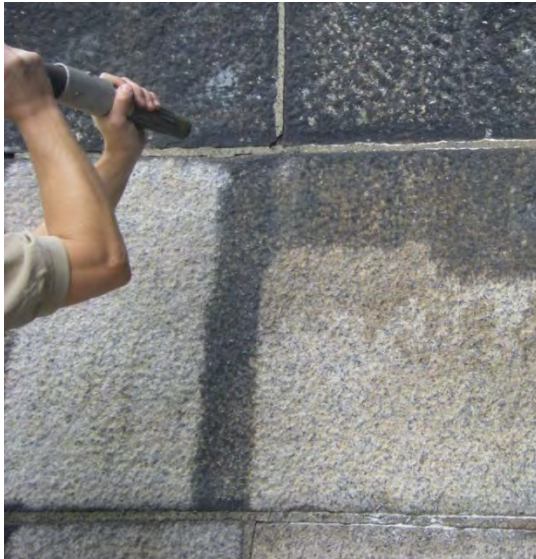
Historic Decisions: Stone

- Many of the original chinking stones are missing
- All new chinking will match existing and be taken from nearby outcroppings wherever possible
- All new stones will match existing and be proportioned similar to the originals



Historic Decisions: Cleaning

- Test different procedures to yield best results
- Remove graffiti, biological growth, and staining



Historic Decisions: Windows

- Window openings have been bricked in, filled with makeshift screens, or replaced with non-historically-appropriate windows
- Remove bricks and install new historically-appropriate windows



Historic Decisions: Shutters

- Original shutters have been lost
- Using historic photographs and existing pintels to assess shutter type



Agenda

- Introductions
- History of building
- Present existing conditions
- Project goals
- Logic for historic decisions
- **Project timeline**
- Questions and Answers, Discussion

Project Timeline

- 2022 – 2023: Preparation of Building Study
- March 2023: DCAMM Certification of Building Study
- October 2023: 25% Design Completed; Swale Construction
- November 2023: Public Meeting
- June 2024: Design Documents Completed
- TBD: Construction Phase

Agenda

- Introductions
- History of building
- Present existing conditions
- Project goals
- Logic for historic decisions
- Project timeline
- Questions and Answers, Discussion



Questions and Answers

Additional Information

Recording and tonight's slide deck will be available at:

www.mass.gov/dcr/past-public-meetings

If you have questions, comments, or suggestions:

Submit online: www.mass.gov/dcr/public-comment

Deadline: Tuesday, 12 December 2023

Note: Public comments submitted to DCR will be posted on the DCR website in their entirety, and no content, including personal information, will be redacted.

If you wish to subscribe to a DCR general information or project-related listserv:

Contact DCR's Office of Community Relations via email at
mass.parks@mass.gov



Thank you for coming

Drawings and Additional Information for Reference

COMMONWEALTH OF MASSACHUSETTS
DEPARTMENT OF CONSERVATION AND RECREATION
PLANNING AND ENGINEERING DIVISION

DCR ELLIS STONE STOREHOUSE - BUILDING ENVELOPE REPAIRS

IN THE CITY OF

HEMLOCK GORGE RESERVATION, NEWTON, MA 02494

Contract No: XX-XXX-XXXX
JUNE 2023

MAURA T. HEALY, GOVERNOR
KIMBERLY L. DRISCOLL, LT. GOVERNOR
REBECCA L. TEPPER, SECRETARY,
EXECUTIVE OFFICE OF ENERGY & ENVIRONMENTAL AFFAIRS
BRIAN M. ARRIGO, COMMISSIONER
DEPARTMENT OF CONSERVATION & RECREATION



LOCUS PLAN

OWNER:
Department of Conservation and Recreation

Contact:
Mr. Jeffrey Harris
jeffrey.harris@mass.gov
617.851.2241

ARCHITECT:
DHK Architects
54 Canal Street
Boston, MA

Project Manager:
Wayne Gething
David Keith

ENGINEER:
Simpson, Gumpertz & Heger, Inc.
480 Totten Pond Rd.
Waltham, MA

Project Manager:
Ellen M. Laase
emlaase@sgb.com
781.907.9120

Project Engineer:
Tommaso Manetti
tmanetti@sgb.com
781.907.9012

Principal-in-Charge:
Matthew B. Bronski, P.E.
mbronski@sgb.com
781.907.9264

00_SHEET LIST		
Sheet Number	Sheet Name	Count
G 0.0	COVER SHEET	1
M 0.0	MASONRY GENERAL NOTES AND PLANS	1
M 1.0	MASONRY NORTH ELEVATIONS	1
M 1.1	MASONRY EAST ELEVATION	1
M 1.2	MASONRY SOUTH ELEVATION	1
M 1.3	MASONRY WEST ELEVATION	1
M 1.4	MASONRY INTERIOR ELEVATIONS	1
M 2.0	MASONRY DETAILS 1	1
M 2.1	MASONRY DETAILS 2	1
M 2.2	MASONRY LINTEL DETAILS	1
W 1.0	WINDOWS NORTH ELEVATION	1
W 1.1	WINDOWS EAST ELEVATION	1
W 1.2	WINDOWS SOUTH ELEVATION	1
W 1.3	WINDOWS WEST ELEVATION	1
W 2.1	WINDOW DETAILS 1	1
Grand Total: 15		15



Department of Conservation
and Recreation (DCR)
Office of Cultural Resources

251 Causeway Street,
Boston, MA 02114
(617) 626-1290

Project Title

Design for Ellis Stone
Storehouse Repairs

220906

P22-3481-D1A

Project Location

Hemlock Gorge Reservation
Wellesley, MA 02494



DHK Architects
54 Canal Street
Suite 200
Boston, MA
(617) 267-6408
www.dhkanyc.com
Project: 03008.6

Project Consultants:

Structural Engineers
Simpson Gumpertz &
Heger
480 Totten Pond Road,
Waltham, MA 02451
(781) 907-9000
sgb.com

MEP/P E Engineers
SAR Engineering Inc.
150 Grosman Drive,
Suite 309
Branford, MA 02184
(617) 221-0220
Cost Estimating
Ellena Construction
Consultants
98 North Washington
Street, Suite 109
Boston, MA 02114
(617) 233-4561

Signatures

Name: Date

Name: Date

Name: Date

Original Issue Date: JUNE 30, 2023

DESIGN DEVELOPMENT SUBMISSION
NOT FOR CONSTRUCTION

No.	Description	Date

Drawing Title

COVER SHEET

G 0.0

GENERAL ENVELOPE NOTES

- GOVERNING CODE: MASSACHUSETTS STATE BUILDING CODE (780 CMR), 8TH EDITION.
- INFORMATION ON PERMISSIBLE WORK HOURS, STAGING AND STORAGE AREAS, AND OTHER LOGISTICAL QUESTIONS WILL BE CELEBRATED AT A PRELIMINARY CONSTRUCTION MEETING.
- THE BUILDING IS HISTORIC, AND ALL WORK IS SUBJECT TO REVIEW AND APPROVAL BY THE DEPARTMENT OF CONSERVATION AND RECREATION. THE INTENT OF THE WORK IS TO REPLACE THE WINDOWS AND DOOR WITH HISTORICALLY APPROPRIATE REPLACEMENTS AND TO REPAIR THE MASONRY FACADE IN KIND, WITH MATERIALS THAT MATCH THE EXISTING HISTORIC MATERIALS AS CLOSELY AS POSSIBLE IN COMPOSITION, COLOR, TEXTURE, AND OVERALL APPEARANCE.
- ALL LOCATIONS INDICATED FOR REPAIR ARE APPROXIMATE AND BASED ON PRIOR SURVEY OF THE FACADE. THE FINAL ACTUAL LOCATIONS AND QUANTITIES FOR REPAIR MAY BE MORE OR LESS THAN THOSE INDICATED, AND WILL BE BASED ON REPAIR QUANTITIES AND LOCATIONS APPROVED BY THE ENGINEER AFTER HANDS-ON SURVEY BY THE CONTRACTOR AND SUBMITTED WITH THE MASONRY REPAIR SHOP DRAWINGS FOR APPROVAL BY THE ENGINEER.
- ALL MATERIALS INDICATED ON THESE DRAWINGS ARE NEW, UNLESS SPECIFICALLY NOTED AS EXISTING.
- ALL EXISTING BUILDING DIMENSIONS INDICATED ON THE DRAWINGS ARE APPROXIMATE AND SHALL BE VERIFIED BY THE CONTRACTOR IN THE FIELD. NOTIFY THE ENGINEER OF ANY INCONSISTENCIES THAT AFFECT THE WORK WITH SUFFICIENT TIME TO PREVENT DELAY OF THE WORK.
- BEFORE THE START OF ANY WORK, TEST FOR HAZARDOUS MATERIALS, OBTAIN PROPER PERMITS, AND FOLLOW ALL REQUIRED PROCEDURES FOR WORKING WITH, REMOVAL AND DISPOSAL OF HAZARDOUS MATERIALS AS REQUIRED BY LOCAL, STATE AND FEDERAL LAWS.

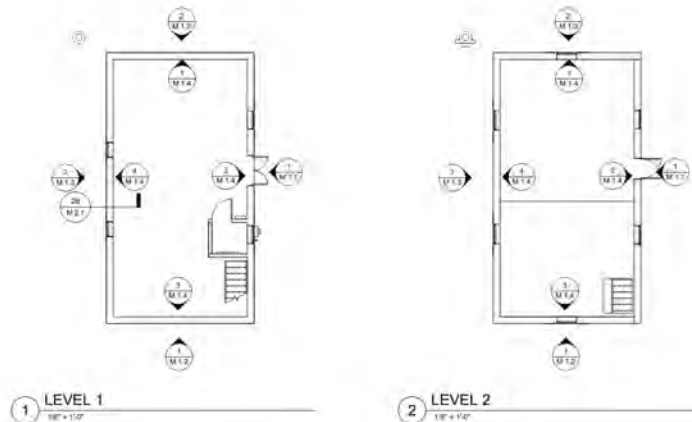
STONE RESTORATION OVERVIEW SUMMARY SCOPE OF WORK

THIS STONE RESTORATION OVERVIEW SUMMARY SCOPE OF WORK IS PROVIDED FOR THE CONVENIENCE OF THE CONTRACTOR. AS AN INTRODUCTORY OVERVIEW TO THE FULL SCOPE OF WORK DESCRIBED IN THE DRAWINGS AND SPECIFICATIONS, THOROUGHLY REVIEW THE DRAWINGS AND SPECIFICATIONS, WHICH SUPERSEDE THIS STONE RESTORATION OVERVIEW SUMMARY, FOR THE FULL SCOPE OF WORK.

- COORDINATE WITH OTHER TRACERS (I.E. THE WINDOW INSTALLER AND ELECTRICAL CONTRACTOR) FOR ANY WORK AFFECTING THE STONE CLEANING AND RESTORATION.
- COMPLETE MULTIPLE ROUNDS OF MOCKUPS PER THE SPECIFICATIONS TO DEVELOP STONE CLEANING AND RESTORATION FOR REVIEW AND APPROVAL BY DC&R AND ENGINEER. STONE RESTORATION MUST MATCH THE SURROUNDING EXISTING MASONRY. DO NOT PROCEED WITH STONE CLEANING OR RESTORATION ON THE FACADE AS A WHOLE UNTIL MOCKUPS ARE APPROVED BY DC&R AND ENGINEER.
- AFTER APPROVAL OF THE STONE CLEANING AND RESTORATION MOCKUPS BY DC&R AND ENGINEER, UNDERTAKE AND COMPLETE THE FOLLOWING REPAIRS AS INDICATED IN THE DRAWINGS AND SPECIFICATIONS, AFTER APPROVAL OF EACH RESPECTIVE MOCKUP BY DC&R AND ENGINEER:
 - REMOVE LAUREL VEGETATION WITHIN 5 FEET OF THE BUILDING FOOTPRINT.
 - CLEAN EXTERIOR RUBBLE STONE MASONRY.
 - PERFORM LOCALIZED REPAIRS AT THE EXTERIOR RUBBLE STONE.
 - PERFORM LOCALIZED REPAIRS AT THE EXTERIOR PLUMBING FOUNDATION ON THE WEST ELEVATION.
 - ADD ALTERNATE #1: REMOVE EXISTING FAIRFAX COAT AND REPAIR 100% OF RUBBLE STONE MASONRY AT INTERIOR.

GENERAL NOTES

- COORDINATE WITH THE CITY OF NEWTON AND OBTAIN ALL PERMITS NECESSARY FOR THE WORK.
- MOBILIZE THE SITE AND PROVIDE ANY AND ALL EQUIPMENT NECESSARY TO ACCESS THE FACADE AND COMPLETE THE WORK.
- PROVIDE CITY OF DC&R ARCHITECT AND ENGINEER WITH ACCESS TO THE FACADE THROUGHOUT CONSTRUCTION, INCLUDING ACCESS TO ANY AND ALL AREAS USED BY THE CONTRACTOR TO ACCESS THE FACADE (E.G. SCAFFOLD, AERIAL LIFTS, ETC.).
- COMPLETE ALL PUNCH LIST ITEMS PRIOR TO DEMOBILIZING FROM THE SITE.
- DEMOLISH FROM THE SITE, REPAIRS FINAL CLEANING OF ALL WORK AND LAY DOWN AREAS, AND RESTORE SURFACE AND DAMAGE TO THE BUILDING, SITE OR LANDSCAPE, INCLUDING ANY SIDEWALKS, GRASS, PLANTS, ETC.



00_SHEET LIST		
Sheet Number	Sheet Name	Count
00.0	COVER SHEET	1
M 0.0	MASONRY GENERAL NOTES AND PLANS	1
M 1.0	MASONRY NORTH ELEVATIONS	1
M 1.1	MASONRY EAST ELEVATION	1
M 1.2	MASONRY SOUTH ELEVATION	1
M 1.3	MASONRY WEST ELEVATION	1
M 1.4	MASONRY INTERIOR ELEVATIONS	1
M 2.0	MASONRY DETAILS	1
M 2.1	MASONRY DETAIL S.1	1
M 2.2	MASONRY DETAIL S.2	1
W 1.0	WINDOWS NORTH ELEVATION	1
W 1.1	WINDOWS EAST ELEVATION	1
W 1.2	WINDOWS SOUTH ELEVATION	1
W 1.3	WINDOW WEST ELEVATION	1
W 2.1	WINDOW DETAILS 1	1



Department of Conservation
and Recreation (DCR)
Office of Cultural Resources

281 Causeway Street,
Boston, MA 02114
(617) 625-1200

Project Title

Design for Ellis Stone
Storehouse Repairs

220006

P22-3481-D1A

Project Location

Hemlock Gorge Reservation
Wellesley, MA 02494



DHK Architects
54 Canal Street
Suite 200
Boston, MA
(617) 267-6406
www.dhknc.com
Project: 02008.6

Project Consultants:

MEPFP Engineers
SAR Engineering Inc.
100 Grossman Drive,
Suite 300
Branford, MA 02184
(617) 221-9220
480 Totten Pond Road,
Waltham, MA 02451
(781) 947-5000
sgf.com

Signatures

Name: _____ Date: _____

Name: _____ Date: _____

Name: _____ Date: _____

Original Issue Date: JUNE 30, 2023

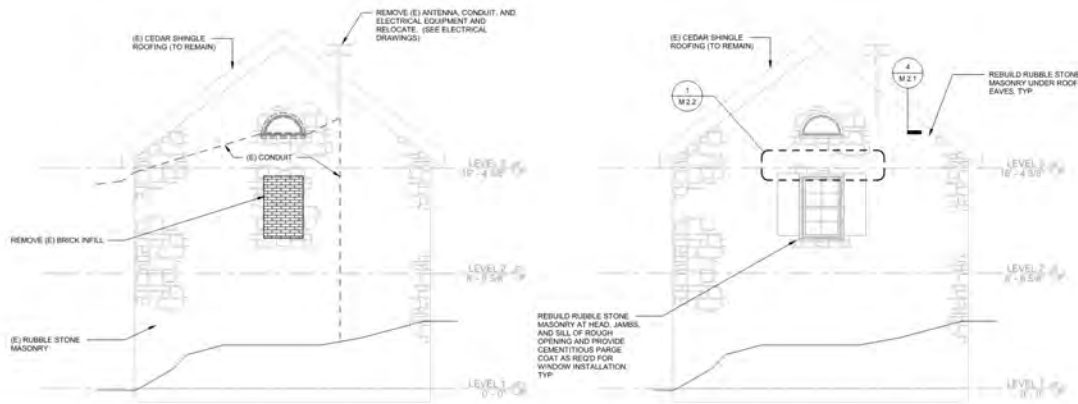
DESIGN DEVELOPMENT/SUBMISSION
NOT FOR CONSTRUCTION

No.	Description	Date

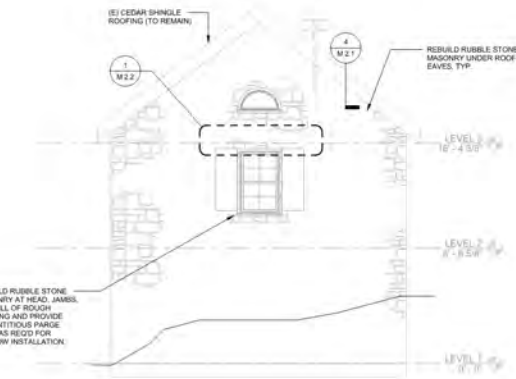
Drawing Title

MASONRY GENERAL NOTES
AND PLANS

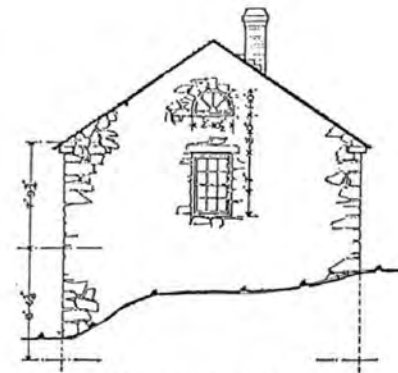
M 0.0



1 NORTH ELEVATION EXISTING
1/4" = 1'-0"



2 NORTH ELEVATION PROPOSED
1/4" = 1'-0"



NORTH ELEVATION

4 NORTH ELEVATION IMAGE
1/4" = 1'-0"



3 NORTH ELEVATION EXISTING PHOTO
2" = 1'-0"

MASONRY ELEVATION NOTES
1. VERIFY ALL DIMENSIONS IN FIELD.
2. CLEAN 100% OF RUBBLE STONE MASONRY PER APPROVED MOCKUPS.
3. REPLACE CHIMNEY AND REPAIR 100% OF RUBBLE STONE MASONRY.
4. REMOVE LARGE VEGETATION WITHIN 3 FEET OF THE BUILDING FOOTPRINT.
5. FOR DOOR WINDOW AND SHUTTER SCOPE, SEE SHEET 300.



Department of Conservation
and Recreation (DCR)
Office of Cultural Resources

251 Causeway Street,
Boston, MA 02114
(617) 626-1250

Project Title
**Design for Ellis Stone
Storehouse Repairs**
230608
P22-3481-D1A
Project Location
**Hemlock Gorge Reservation
Wellesley, MA 02494**

DKH
ARCHITECTS
DKH Architects
54 Canal Street
Suite 200
Boston, MA
(617) 267-6408
www.dkhinc.com
Project: 03008.6

Project Consultants:
Structural Engineers
Simpson Gumpertz &
Heger
480 Totten Pond Road,
Waltham, MA 02451
(781) 907-9000
sgh.com
MEP/FP Engineers
SAR Engineering Inc.
150 Grossman Drive,
Suite 309
Bainbridge, MA 02184
(617) 221-9220
Cost Estimating
Elliana Construction
Consultants
98 North Washington
Street, Suite 109
Boston, MA 02114
(857) 233-4561

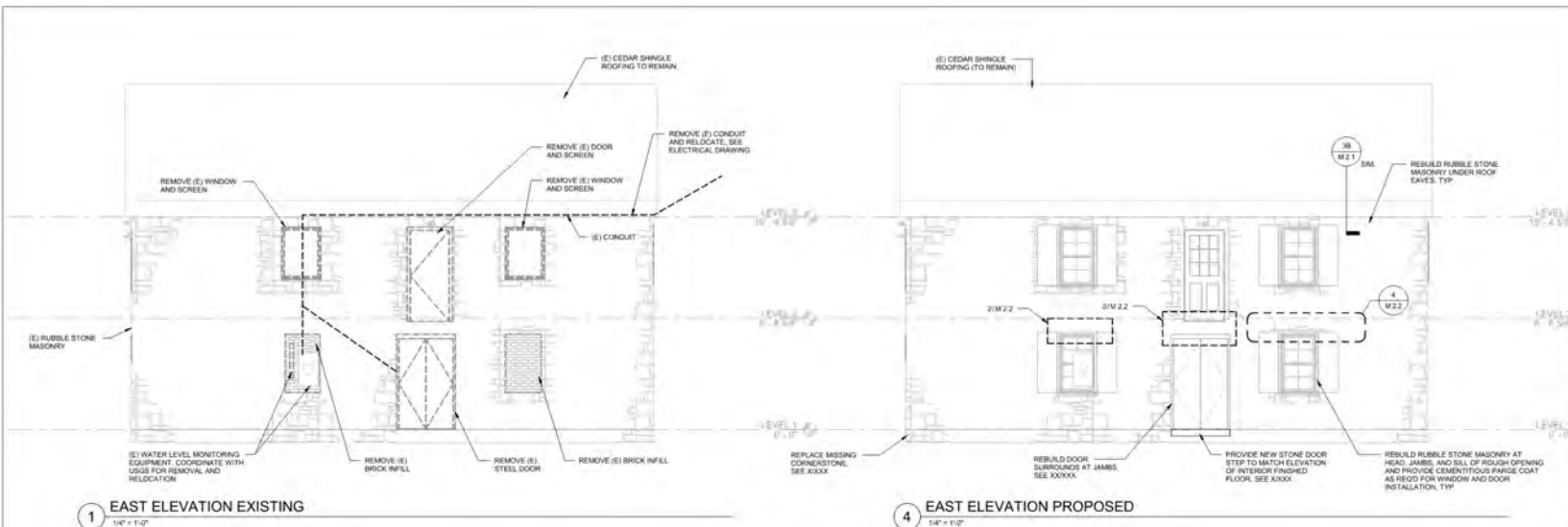
Signatures
Name Date
Name Date
Name Date

Original Issue Date: JUNE 30, 2023
DESIGN DEVELOPMENT/SUBMISSION
NOT FOR CONSTRUCTION

No.	Description	Date

Drawing Title
**MASONRY NORTH
ELEVATIONS**

M 1.0



3 EAST ELEVATION EXISTING PHOTO
1/8" = 1'-0"

- MASONRY ELEVATION NOTES**
1. VERIFY ALL DIMENSIONS IN FIELD.
 2. CLEAN 100% OF RUBBLE STONE MASONRY PER APPROVED MOCKUPS.
 3. REPLACE CHIMNEY AND REPOINT 100% OF RUBBLE STONE MASONRY.
 4. REMOVE LARGE VEGETATION WITHIN 3 FEET OF THE BUILDING FOOTPRINT.
 5. FOR DOOR WINDOW AND SHUTTER SCOPE, SEE SHEET AXA.



Department of Conservation
and Recreation (DCR)
Office of Cultural Resources

251 Causeway Street,
Boston, MA 02114
(617) 626-1250

Project Title
**Design for Ellis Stone
Storehouse Repairs**
220606
P22-3481-D1A
Project Location
**Hemlock Gorge Reservation
Wellesley, MA 02494**



DHK Architects
54 Canal Street
Suite 200
Boston, MA
(617) 267-6408
www.dhka.com
Project: 030806

Project Consultants:
Structural Engineers
SAR Engineering Inc.
150 Grossman Drive,
Suite 309
Beverly, MA 02184
(617) 221-9220
480 Totten Pond Road,
Waltham, MA 02451
(781) 807-9900
sgh.com

MEP/PP Engineers
SAR Engineering Inc.
150 Grossman Drive,
Suite 309
Beverly, MA 02184
(617) 221-9220
Cost Estimating
Elisma Construction
Consultants
98 North Washington
Street, Suite 109
Boston, MA 02114
(857) 233-4561

Signatures

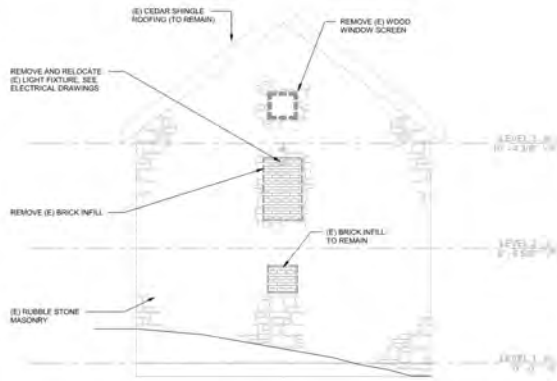
Name	Date
Name	Date
Name	Date

Original Issue Date: JUNE 30, 2023
DESIGN DEVELOPMENT/SUBMISSION
NOT FOR CONSTRUCTION

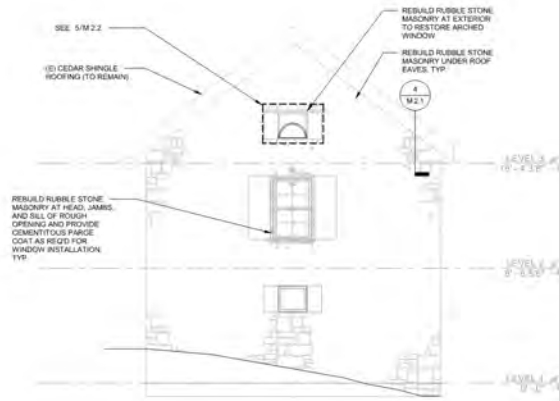
No.	Description	Date

Drawing Title
MASONRY EAST ELEVATION

M 1.1



1 SOUTH ELEVATION EXISTING
1/4" = 1'-0"



2 SOUTH ELEVATION PROPOSED
1/4" = 1'-0"



3 SOUTH ELEVATION EXISTING PHOTO
1/4" = 1'-0"

MASONRY ELEVATION NOTES

1. VERIFY ALL DIMENSIONS IN FIELD.
2. CLEAN 100% OF RUBBLE STONE MASONRY PER APPROVED MOCKUPS.
3. REPLACE CHIMNEY AND REPOINT 100% OF RUBBLE STONE MASONRY.
4. REMOVE LARGE VEGETATION WITHIN 3 FEET OF THE BUILDING FOOTPRINT.
5. FOR DOOR WINDOW AND SHUTTER SCOPE, SEE SHEET XXX.



Department of Conservation
and Recreation (DCR)
Office of Cultural Resources

251 Causeway Street,
Boston, MA 02114
(617) 626-1250

Project Title

Design for Ellis Stone
Storehouse Repairs

220606
P22-3481-D1A

Project Location

Hemlock Gorge Reservation
Wellesley, MA 02494



DHK Architects
54 Canal Street
Suite 200
Boston, MA
(617) 267-6408
www.dhkinc.com
Project: 03008.6

Project Consultants:

Structural Engineers
Simpson Gumpertz &
Heger
480 Totem Pond Road,
Waltham, MA 02451
(781) 907-8900
sgh.com

MEP/FP Engineers
SAR Engineering Inc.
150 Grossman Drive,
Suite 309
Braintree, MA 02194
(617) 221-9220
Cost Estimating
Elana Construction
Consultants
98 North Washington
Street, Suite 105
Boston, MA 02114
(617) 233-4561

Signatures

Name	Date
Name	Date
Name	Date

Original Issue Date: JUNE 30, 2023

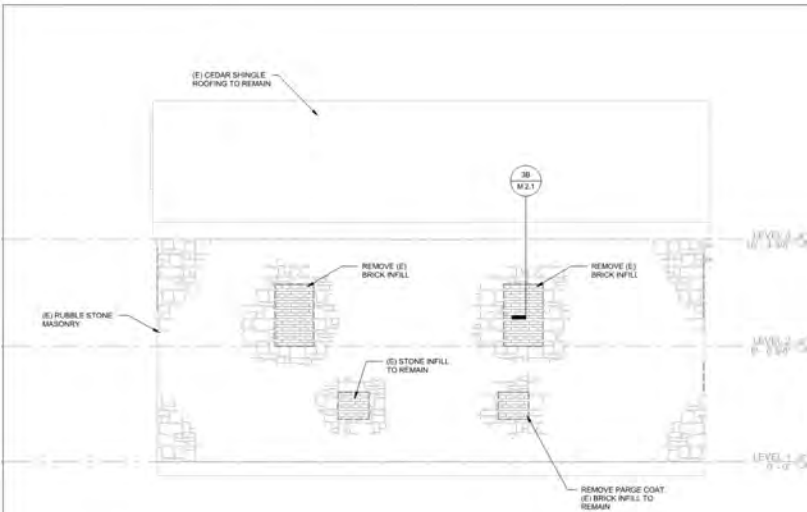
DESIGN DEVELOPMENT/SUBMISSION
NOT FOR CONSTRUCTION

No.	Description	Date

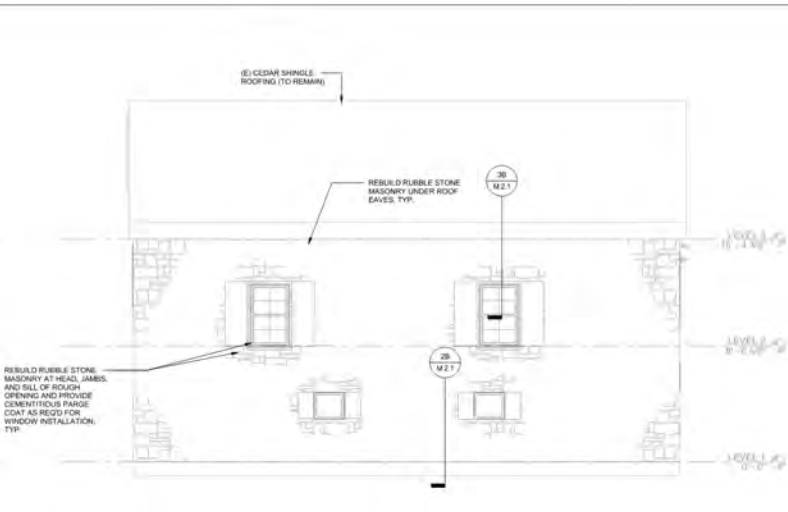
Drawing Title

MASONRY SOUTH ELEVATION

M 1.2



1 WEST ELEVATION EXISTING
1/4" = 1'-0"



2 WEST ELEVATION PROPOSED
1/4" = 1'-0"



3 WEST ELEVATION EXISTING PHOTO MASONRY
1/4" = 1'-0"

- MASONRY ELEVATION NOTES**
1. VERIFY ALL DIMENSIONS IN FIELD.
 2. CLEAN 100% OF RUMBLE STONE MASONRY PER APPROVED MOCKUPS.
 3. REPLACE CHIMNEY AND REPOINT 100% OF RUMBLE STONE MASONRY.
 4. REMOVE LARGE VEGETATION WITHIN 3 FEET OF THE BUILDING FOOTPRINT.
 5. FOR DOOR WINDOW AND SHUTTER SCOPE, SEE SHEET XXX.



Department of Conservation
and Recreation (DCR)
Office of Cultural Resources
251 Causeway Street,
Boston, MA 02114
(617) 626-1250

Project Title
**Design for Ellis Stone
Storehouse Repairs**
220606
P22-3481-D1A
Project Location
**Hemlock Gorge Reservation
Wellesley, MA 02494**

DHK
ARCHITECTS
DHK Architects
54 Canal Street
Suite 205
Boston, MA
(617) 267-5486
www.dhkinc.com
Project: 03006.6

Project Consultants:
Structural Engineers
Simpson Gumpertz &
Heger
480 Totten Pond Road,
Waltham, MA 02451
(781) 907-9000
sgh.com
MEP/FP Engineers
SAR Engineering Inc.
150 Grossman Drive,
Suite 309
Braintree, MA 02184
(617) 221-6220
Cost Estimating
Ellana Construction
Consultants
368 North Washington
Street, Suite 109
Boston, MA 02114
(617) 233-4561

Signatures
Name _____ Date _____
Name _____ Date _____
Name _____ Date _____

Original Issue Date JUNE 30, 2023
DESIGN DEVELOPMENT SUBMISSION
NOT FOR CONSTRUCTION

No.	Description	Date

Drawing Title
MASONRY WEST ELEVATION

M 1.3



Department of Conservation
and Recreation (DCR)
Office of Cultural Resources

251 Causeway Street,
Boston, MA 02114
(617) 620-1250

Project Title

Design for Ellis Stone
Storehouse Repairs

220906

P22-3481-D1A

Project Location

Hemlock Gorge Reservation
Wellesley, MA 02494



DHK Architects
54 Canal Street
Suite 200
Boston, MA
(617) 267-6406
www.dhkanz.com
Project 020906

Project Consultants:

Structural Engineers
Simpson Gumpertz &
Heger
480 Totten Pond Road,
Waltham, MA 02451
(781) 867-6900
sgh.com

MEP/FPF Engineers
SAR Engineering Inc.
150 Grossman Drive,
Suite 309
Braintree, MA 02184
(617) 221-6220
Cost Estimating
Eterna Construction
Consultants
96 North Washington
Street, Suite 109
Boston, MA 02114
(857) 233-4561

Signatures

Name: _____ Date: _____

Name: _____ Date: _____

Name: _____ Date: _____

Original Issue Date: JUNE 30, 2023

DESIGN DEVELOPMENT SUBMISSION
NOT FOR CONSTRUCTION

No.	Description	Date

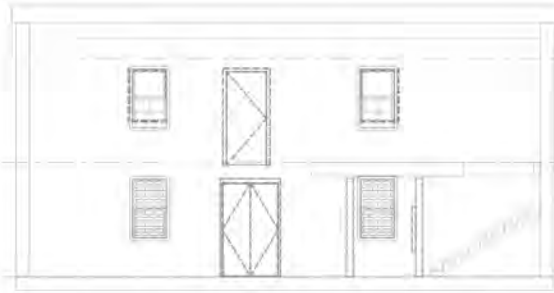
Drawing Title

MASONRY INTERIOR
ELEVATIONS

M 1.4



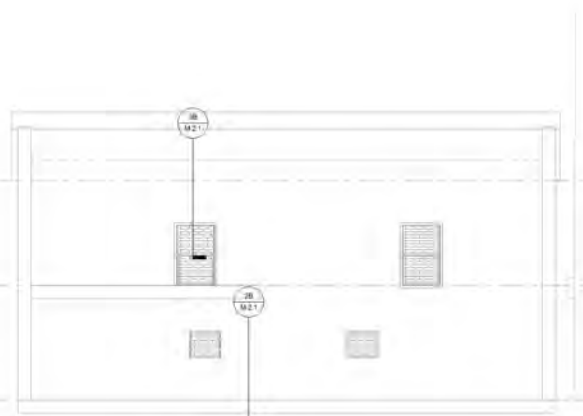
1 DOC_NORTH INTERIOR ELEVATION
1/8" = 1'-0"



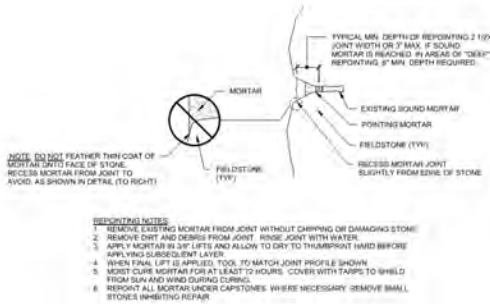
2 DOC_EAST INTERIOR ELEVATION
1/8" = 1'-0"



3 DOC_SOUTH INTERIOR ELEVATION
1/8" = 1'-0"

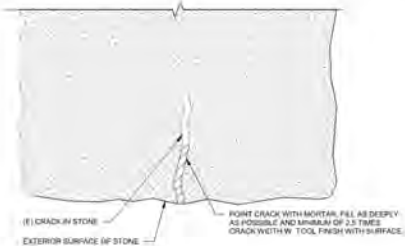


4 DOC_WEST INTERIOR ELEVATION
1/8" = 1'-0"



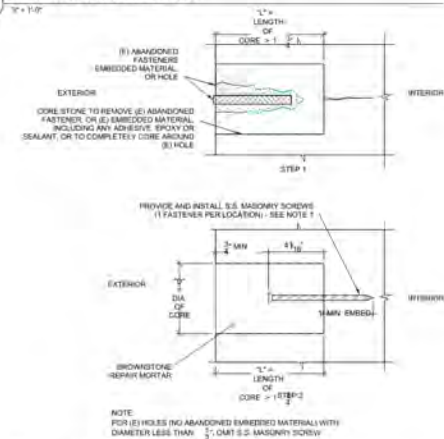
SECTION: TYPICAL REPOINTING

3" x 1'-0"



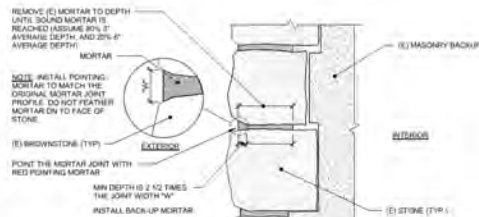
SECTION: CRACK REPAIR

3" x 1'-0"



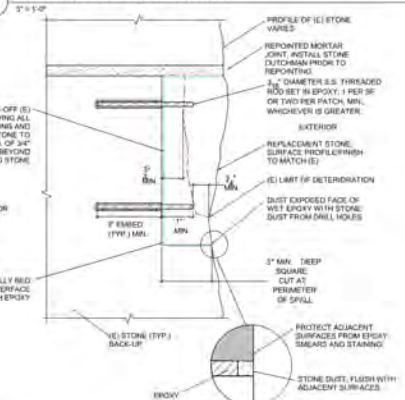
SECTION: HOLE REPAIR

3" x 1'-0"



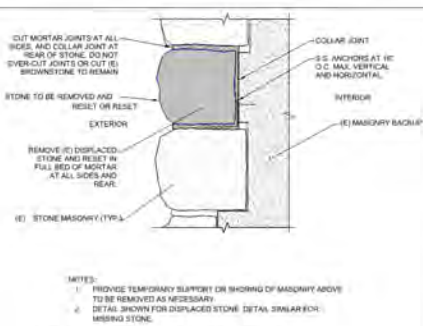
SECTION: DEEP REPOINTING

3" x 1'-0"



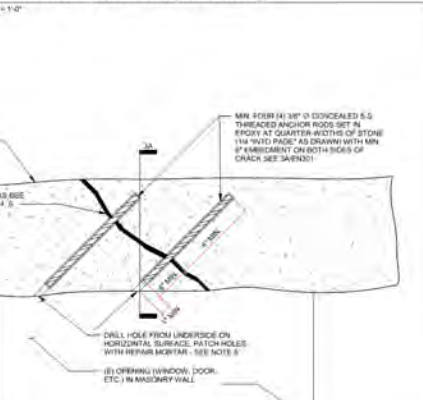
DUTCHMAN REPAIR

3" x 1'-0"



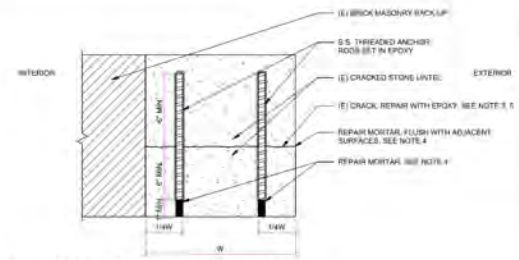
SECTION: REMOVE AND RESET STONE

3" x 1'-0"



NOTES:

- BEFORE STARTING REPAIR, ALLOW ENGINEER TO ACCESS AND INSPECT CRACKED STONE. SO THAT ENGINEER CAN ADJUST DETAIL IF NEEDED TO SUIT THE EXISTING CONDITIONS
- INSTALL MIN. 4" INSTALLED PERPENDICULAR TO CRACK AT MID-WIDTH OF STONE. TWO MINIMUM PER MEMBER. (PROCESS HEAD OF ANCHOR MIN 1" FROM EXPOSED STONE)
- CLEAN CRACK WITH COMPRESSED AIR
- POINT EXPOSED SURFACES OF CRACK WITH REPAIR MORTAR, FLUSH WITH ADJACENT SURFACES
- INJECT CRACK WITH NON-SETTING EPOXY (TAILED TO MATCH COLOR OF STONE, FLUSH WITH ADJACENT SURFACES)
- PATCH EXPOSED HOLE AT DRILL POINTS OF ANCHORS AND EPOXY INJECTION PORTS WITH REPAIR MORTAR 1/4" MIN. DEPTH. TEXTURE AND PROFILE OF REPAIR MORTAR TO MATCH THAT OF SURROUNDING STONE



CRACK REPAIR AT SPANNING STONES

3" x 1'-0"

dcr
Massachusetts

Department of Conservation
and Recreation (DCR)
Office of Cultural Resources

251 Causeway Street,
Boston, MA 02114
(617) 626-1250

Project Title
**Design for Ellis Stone
Storehouse Repairs**
220608
P22-3481-D1A

Project Location
**Hemlock Gorge Reservation
Wellesley, MA 02494**

DKH
Architects

DKH Architects
54 Canal Street
Suite 200
Boston, MA
(617) 267-6408
www.dkhinc.com
Project: 03008.6

Project Consultants:

MEP/FP Engineers
SAR Engineering Inc.
150 Grossman Drive,
Suite 309
Braintree, MA 02194
(617) 221-9220
Cost Estimating
Elena Construction
Consultants
98 North Washington
Street, Suite 109
Boston, MA 02114
(617) 233-4561

Signatures

Name: _____ Date: _____

Name: _____ Date: _____

Name: _____ Date: _____

Original Issue Date: JUNE 30, 2023
DESIGN DEVELOPMENT/SUBMISSION
NOT FOR CONSTRUCTION

No.	Description	Date

Drawing Title
MASONRY DETAILS 1



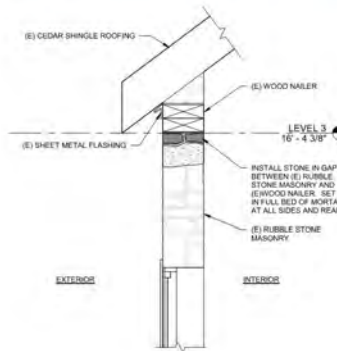
1A REPAIR AT CORNER PHOTO
1/8" = 1'-0"



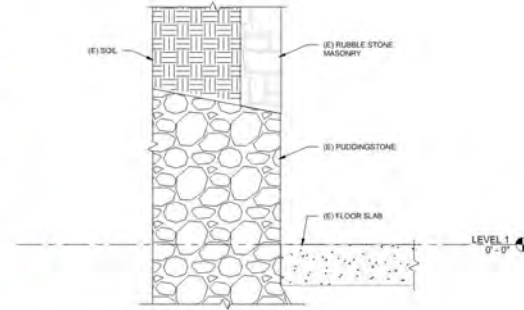
3A REAR AT TOP OF WALL PHOTO
1/8" = 1'-0"



2A PUDDINGSTONE AT WESTWALL PHOTO
1/8" = 1'-0"



3B REPAIR AT REAR AT TOP OF WALL
3/8" = 1'-0"



2B REPAIR AT LEDGE SECTION
3/8" = 1'-0"



4 REPAIR AT TOP OF WALL
1/2" = 1'-0"



Department of Conservation
and Recreation (DCR)
Office of Cultural Resources

251 Causeway Street,
Boston, MA 02114
(617) 626-1250

Project Title

Design for Ellis Stone
Storehouse Repairs

220606

P22-3481-D1A

Project Location

Hemlock Gorge Reservation
Wellesley, MA 02494



DHK Architects
54 Canal Street
Suite 200
Boston, MA
(617) 267-6408
www.dhkinc.com
Project: 03008.6

Project Consultants:

MEP/FP Engineers
SAR Engineering Inc.
150 Crossman Drive,
Suite 309
Bainbridge, MA 02184
(617) 221-9220
Cost Estimating
Ellana Construction
Consultants
58 North Washington
Street, Suite 109
Boston, MA 02114
(617) 233-4561

Signatures

Name Date

Name Date

Name Date

Original Issue Date JUNE 30, 2023

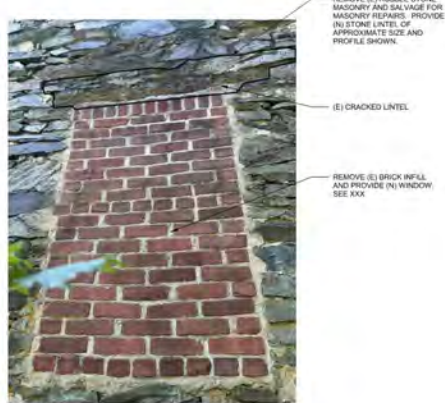
DESIGN DEVELOPMENT SUBMISSION
NOT FOR CONSTRUCTION

No.	Description	Date

Drawing Title

MASONRY DETAILS 2

M 2.1



NOTE: PROVIDE TEMPORARY SHORING AS REQUIRED FOR NEW LINTEL INSTALLATION.

1 NORTH ELEVATION WINDOW LINTEL PHOTO
12" x 1'-0"



NOTE: PROVIDE TEMPORARY SHORING AS REQUIRED FOR NEW LINTEL INSTALLATION.

2 EAST ELEVATION WINDOW LINTEL PHOTO
12" x 1'-0"



NOTE: PROVIDE TEMPORARY SHORING AS REQUIRED FOR NEW LINTEL INSTALLATION.

3 EAST ELEVATION DOOR LINTEL PHOTO
12" x 1'-0"



NOTE: PROVIDE TEMPORARY SHORING AS REQUIRED FOR NEW LINTEL INSTALLATION.

4 EAST ELEVATION WINDOW LINTEL PHOTO
12" x 1'-0"



5 SOUTH ELEVATION ARCHED WINDOW PHOTO
12" x 1'-0"



Department of Conservation
and Recreation (DCR)
Office of Cultural Resources

251 Causeway Street,
Boston, MA 02114
(617) 626-1250

Project Title

Design for Ellis Stone
Storehouse Repairs

220606

P22-3481-D1A

Project Location

Hemlock Gorge Reservation
Wellesley, MA 02494



DKH Architects
54 Canal Street
Suite 200
Boston, MA
(617) 267-6408
www.dhkinc.com
Project: 0308.6

Project Consultants:

Structural Engineers
Simpson Gumpertz &
Hager
480 Totten Pond Road,
Waltham, MA 02451
(781) 907-9000
sgh.com

MEP/FP Engineers
SAR Engineering Inc.
150 Grosvenor Drive,
Suite 309
Braintree, MA 02184
(617) 221-9220
Cost Estimating
Eliana Construction
Consultants
98 North Washington
Street, Suite 109
Boston, MA 02114
(857) 233-4561

Signatures

Name	Date
Name	Date
Name	Date

Original Issue Date: JUNE 30, 2023

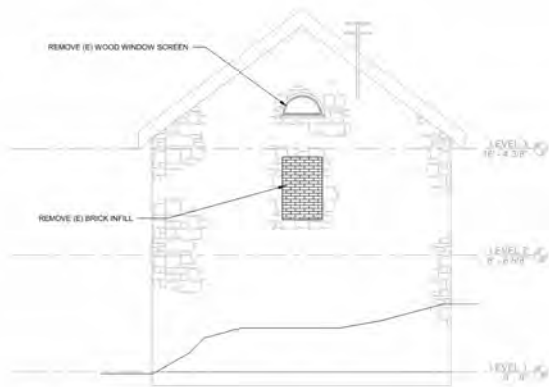
DESIGN DEVELOPMENT/SUBMISSION
NOT FOR CONSTRUCTION

No.	Description	Date

Drawing Title

MASONRY LINTEL DETAILS

M 2.2



1 NORTH ELEVATION EXISTING
1/4" = 1'-0"



2 NORTH ELEVATION PROPOSED
1/4" = 1'-0"



3 NORTH ELEVATION EXISTING PHOTO
3" = 1'-0"

WINDOW ELEVATION NOTES:
1. VERIFY ALL DIMENSIONS IN FIELD
2. FOR MAGNIFY SCOPE, SEE SHEET XXX



Department of Conservation
and Recreation (DCR)
Office of Cultural Resources

251 Causeway Street,
Boston, MA 02114
(617) 626-1250

Project Title

Design for Ellis Stone
Storehouse Repairs

220606

P22-3481-D1A

Project Location

Hemlock Gorge Reservation
Wellesley, MA 02494



DHK Architects
54 Canal Street
Suite 200
Boston, MA
(617) 267-6408
www.dhkinc.com
Project: 03008.6

Project Consultants:

Structural Engineers
Sampson Gumpertz &
Hogar
480 Totten Pond Road,
Waltham, MA 02451
(781) 907-9000
sgh.com

MEP/FP Engineers
SAR Engineering Inc.
150 Crossman Drive,
Suite 309
Braintree, MA 02184
(617) 221-9220
Cost Estimating
Ellana Construction
Consultants
98 North Washington
Street, Suite 109
Boston, MA 02114
(617) 233-4561

Signatures

Name Date

Name Date

Name Date

Original Issue Date JUNE 30, 2023

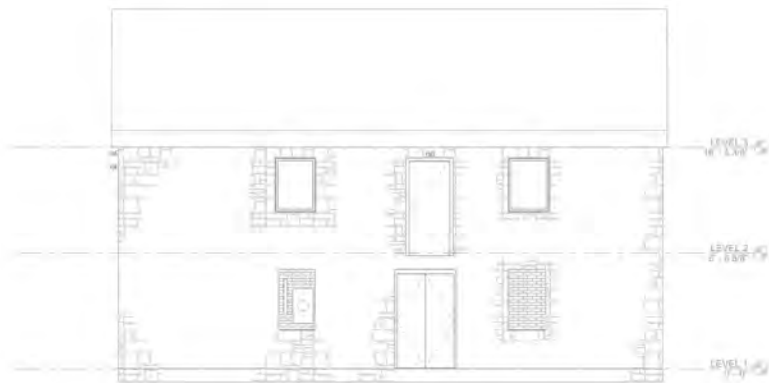
DESIGN DEVELOPMENT/SUBMISSION
NOT FOR CONSTRUCTION

No.	Description	Date

Drawing Title

WINDOWS NORTH
ELEVATION

W 1.0



1 EAST ELEVATION EXISTING
1/8" = 1'-0"



2 EAST ELEVATION PROPOSED
1/8" = 1'-0"



3 EAST ELEVATION EXISTING PHOTO
1/8" = 1'-0"

WINDOW ELEVATION NOTES:
1. VERIFY ALL DIMENSIONS IN FIELD
2. FOR MASONRY SCOPE, SEE SHEET XXX



Department of Conservation
and Recreation (DCR)
Office of Cultural Resources

251 Causeway Street,
Boston, MA 02114
(617) 626-1250

Project Title

Design for Ellis Stone
Storehouse Repairs

220506

P22-3481-D1A

Project Location

Hemlock Gorge Reservation
Wellesley, MA 02494



DHK Architects
54 Canal Street
Suite 200
Boston, MA
(617) 267-6408
www.dhkinc.com
Project: 03008.6

Project Consultants:

Structural Engineers:
Simpson Gumpertz &
Heger
480 Totten Pond Road,
Waltham, MA 02451
(781) 907-9000
sgh.com

ME/FP Engineers
SAR Engineering, Inc.
150 Grossman Drive,
Suite 309
Braintree, MA 02184
(617) 221-9220
Cost Estimating
Elana Construction
Consultants
98 North Washington
Street, Suite 109
Boston, MA 02114
(657) 233-4561

Signatures

Name: Date

Name: Date

Name: Date

Original Issue Date: JUNE 30, 2023

DESIGN DEVELOPMENT SUBMISSION
NOT FOR CONSTRUCTION

No.	Description	Date

Drawing Title

WINDOWS EAST ELEVATION

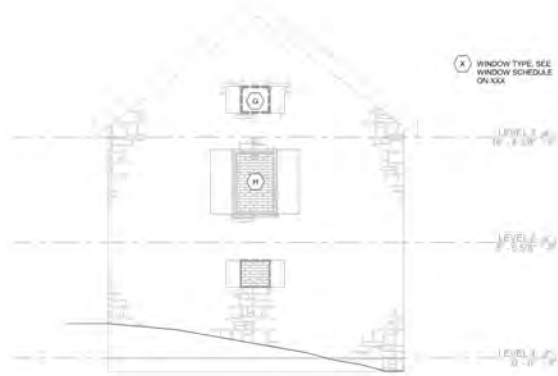
W 1.1



1 SOUTH ELEVATION EXISTING
1/8" = 1'-0"



3 SOUTH ELEVATION EXISTING PHOTO
1/8" = 1'-0"



2 SOUTH ELEVATION PROPOSED
1/8" = 1'-0"

(X) WINDOW TYPE, SEE WINDOW SCHEDULE ON 104

WINDOW ELEVATION NOTES
1. VERIFY ALL DIMENSIONS IN FIELD
2. FOR WINDOW SCOPE, SEE SHEET 100X



Department of Conservation
and Recreation (DCR)
Office of Cultural Resources

251 Causeway Street,
Boston, MA 02114
(617) 626-1250

Project Title

Design for Ellis Stone
Storehouse Repairs

220606

P22-3481-D1A

Project Location

Hemlock Gorge Reservation
Wellesley, MA 02494



DHK Architects
54 Canal Street
Suite 200
Boston, MA
(617) 267-6408
www.dhkinc.com
Project: 03008.6

Project Consultants:

Structural Engineers
Simpson Gumpertz &
Heger
480 Totten Pond Road,
Waltham, MA 02451
(781) 907-9900
sgh.com

MEPFP Engineers
SAR Engineering Inc.
150 Grossman Drive,
Suite 309
Braintree, MA 02184
(617) 221-9220
Cost Estimating
Ellana Construction
Consultants
98 North Washington
Street, Suite 109
Boston, MA 02114
(857) 233-4561

Signatures

Name Date

Name Date

Name Date

Original Issue Date JUNE 30, 2023

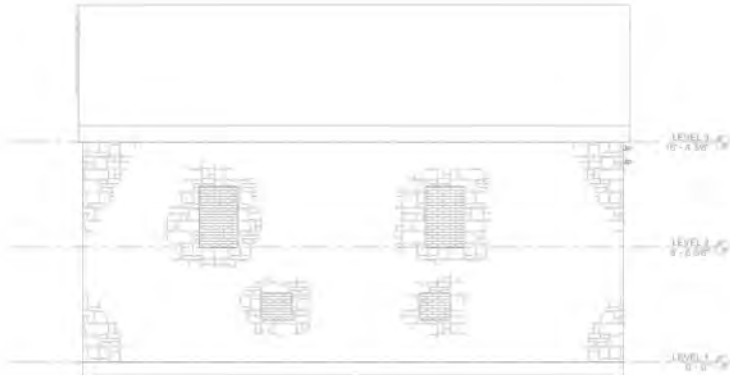
DESIGN DEVELOPMENT SUBMISSION
NOT FOR CONSTRUCTION

No.	Description	Date

Drawing Title

WINDOWS SOUTH ELEVATION

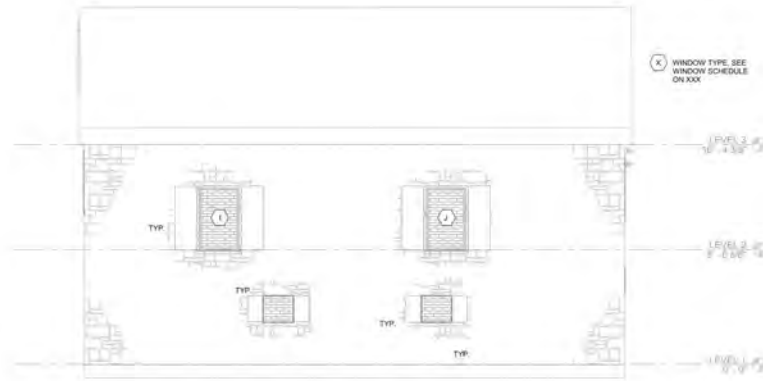
W 1.2



1 WEST ELEVATION
1/4" = 1'-0"



3 WEST ELEVATION EXISTING PHOTO WINDOW
1/4" = 1'-0"



2 WEST ELEVATION
1/4" = 1'-0"

WINDOW ELEVATION NOTES:
1. VERIFY ALL DIMENSIONS IN FIELD
2. FOR MASONRY SCOPE, SEE SHEET XXX.



Department of Conservation
and Recreation (DCR)
Office of Cultural Resources

251 Causeway Street,
Boston, MA 02114
(617) 626-1250

Project Title
**Design for Ellis Stone
Storehouse Repairs**
220606
P22-3481-D1A
Project Location
**Hemlock Gorge Reservation
Wellesley, MA 02494**



DHK Architects
54 Canal Street
Suite 200
Boston, MA
(617) 267-6408
www.dhkinc.com
Project: 03008.6

Project Consultants:
Structural Engineers
Simpson Gumpertz &
Heger
480 Totten Pond Road,
Waltham, MA 02451
(781) 907-9000
sgh.com
ME/FP Engineers
SAR Engineering Inc.
150 Grossman Drive,
Suite 309
Branintree, MA 02184
(617) 221-9220
Cost Estimating
Eliana Construction
Consultants
96 North Washington
Street, Suite 109
Boston, MA 02114
(857) 233-4561

Signatures
Name Date
Name Date
Name Date

Original Issue Date JUNE 30, 2023
DESIGN DEVELOPMENT SUBMISSION
NOT FOR CONSTRUCTION

No.	Description	Date

Drawing Title
WINDOW WEST ELEVATION

W 1.3

LINTEL DETAIL HERE

1 DOC LINTEL DETAIL OVER WINDOW

WINDOW CROSS-SECTION HERE

2 DOC WINDOW CROSS-SECTION

WINDOW PLAN-SECTION HERE

3 DOC WINDOW PLAN-SECTION



Department of Conservation
and Recreation (DCR)
Office of Cultural Resources

251 Causeway Street
Boston, MA 02114
(617) 626-1250

Project Title

Design for Ellis Stone
Storehouse Repairs

220006

P22-3481-D1A

Project Location

Hemlock Gorge Reservation
Wellesley, MA 02494



DHK Architecture
54 Canal Street
Suite 210
Boston, MA
(617) 267-4608
www.dhka.com
Project: 05508.6

Project Consultants

Structural Engineers
Simpson Consulting &
Hager
400 Totten Pond Road
Weymouth, MA 02451
(781) 907-9000
sqh.com

MEVP Engineers
SAK Engineering Inc.
150 Grosvenor Drive,
Suite 300
Braintree, MA 02186
(617) 221-6200
Cost Estimating
Ellis Construction
Consultants
18 North Washington
Street, Suite 109
Boston, MA 02114
(857) 233-4561

Signatures

Name Date

Name Date

Name Date

Original Issue Date: JUNE 30, 2023

DESIGN DEVELOPMENT SUBMISSION
NOT FOR CONSTRUCTION

No.	Description	Date

Drawing Title

WINDOW DETAILS 1

W 2.1

Mortar Types (Measured by volume)			
Designation	Cement	Hydrated Lime or Lime Putty	Sand
M	1	1/4	3 - 3 3/4
S	1	1/2	4 - 4 1/2
N	1	1	5 - 6
O	1	2	8 - 9
K	1	3	10 - 12
"L"	0	1	2 1/4 - 3

Suggested Mortar Types for Different Exposures			
	Exposure		
Masonry Material	Sheltered	Moderate	Severe
Very durable: granite, hard-cored brick, etc.	O	N	S
Moderately durable: limestone, durable stone, molded brick	K	O	N
Minimally durable: soft hand-made brick	"L"	K	O