



Evaluation of the Ware River Watershed Public Access Management Plan-2011



February 2011

Massachusetts Department of Conservation and Recreation
Division of Water Supply Protection
Office of Watershed Management

Abstract

DCR's Office of Watershed Management committed in 2009 to annual evaluation of its Public Access Management Plan – Ware River Watershed to respond more quickly to public access problems, issues, conflicts, and questions, in an annual public format. In September 2010, DCR staff began their internal evaluation first by meeting with the Ware River Watershed Advisory Committee to informally collect public input on access policies and outstanding issues. An internal DCR working group was formed in October to review the existing plan, with a focus on the 2010 policy matrix and maps. The Working Group identified eleven areas for corrections and clarifications and one minor policy modification. In addition, at the request of the Quabbin Watershed Advisory Committee, the DCR staff diagramed its internal process for the review and consideration of public access policy requests to accompany DCR's Master Policy Statement 2010 (**Figure 1**). A draft evaluation plan was delivered to the WRWAC in January 2011 for review and comment. WRWAC voted to support DCR's efforts to manage Aquatic Invasive Species (AIS), especially *didymo*, through on-going public education efforts. Public notice of the January meeting was published on the DCR website and through word-of-mouth. Following the WRWAC January meeting, a public input notice was published on the DCR website with a hyperlink to the draft report. In addition, email notification was sent to eighteen additional stakeholders (legislators, federal agency staff, sister agency staff, NGOs, etc.). The final report and updated policy matrix and maps were finalized in February 2011.

Acknowledgements

DCR, OWM Staff: William Pula, Dave Small, Bob Bishop, Clif Read, Herm Eck, Rebecca Budaj, Dave Zaganiatz, Paul Lyons, Phil Lamothe, and Joel Zimmerman.

Ware River Watershed Advisory Committee (2010): Worcester County League of Sportsmen: Dave Papale; Alternate: Paul Thompson; Trout Unlimited: Jeffrey Schaaf, Co-chairman; Alternate: (empty); A Rod and Gun Club: Chris Duggan; Alternate: Brian Waterman; Barre Selectboard: Martha Varnot; Alternate: Edward Yaglou; Hubbardston Selectboard: Thomas Bratko; Alternate: (empty); Oakham Selectmen: Thomas Hughes; Alternate: Henry Stone; Rutland Selectmen: Charles R. Williams; Alternate: (empty); Barre Historical Society: Burt Frost; Alternate: Peg Frost; Hubbardston Historical Society: (empty); Alternate: (empty); Oakham Historical Society: Wes Dwelly; Alternate: Bill Mucha; Rutland Historical Society: Helen Viner; Alternate: Tim Nahrwold; Massachusetts Wildlife Federation: Bill Westaway, Co-chairman; Alternate: Thomas Berube; Massachusetts Audubon Society: Charles Delaney; Alternate: (empty); Sierra Club: Matt Hopkinson; Alternate: (empty); Upper Ware River Watershed Association: Donald Rich; Alternate: Edward Yaglou; General Public: Mark DuBois; Alternate: (empty).

Additional Stakeholders: Senator Stephen M. Brewer, Representative Anne M. Gobi, Water Supply System Citizens Advisory Committee (WSCAC), MA Water Resources Authority (MWRA), MA Department of Environmental Protection (DEP)-Western Region, US Army Corps of Engineers New England District (NAE), Water Supply Protection Trust, MA Department of Fish and Game, Wachusett Greenways, DCR Division of State Parks and Recreation, and the MA Environmental Police (EPO).

Evaluation of the Ware River Watershed Public Access Management Plan - 2011

Contents

I.	Introduction	1
II.	Background – Public Access Actions Summarized	2
III.	Evaluation Summary 2010	3
	Master Policy: Public Access Management.....	5
IV.	Public Input	12
	Ware River Watershed Advisory Committee (WRWAC)	12
	Additional Stakeholders	12
V.	Final Revisions with modified Matrix and Map – 2011.....	13
	Appendix A. 2010 Matrix and Map	19
	Appendix B. WRWAC Meeting Minutes and Letters – 2010.....	22

Figures

Figure 1.	Process for Access Proposal Evaluation as Referenced in 2010 Master Policy	4
-----------	--	---

Maps

Map 1.	2011 Ware River Watershed Mangement Areas.....	16
Map 2.	2011 Designated Snowmobile Access Map - A.....	17
Map 3.	2011 Designated Snowmobile Access Map: B	18

Photos

Photo 1.	DCR road intersecting with Massachusetts Rail Trail - Rutland, MA.....	1
----------	--	---

I. Introduction

This report provides an evaluation of current Public Access policies or Public Access issues related to DCR-Watershed's recreational access policies and procedures within its lands and waters in the Ware River Watershed System. These policies and procedures are detailed in the 2010 Ware River Watershed Public Access Management Plan Update. Section II summarizes access related actions accomplished in 2010 by DCR staff. Section III lists 2010 access issues and management recommendations for their correction, policy change, or implementation needs for 2011. Section IV section describes the public's input related to DCR's proposed changes. Section V contains the final revisions to DCR's policies and procedures for public access within its lands and waters in the Ware River Watershed in the form of an updated matrix and associated maps.

The purpose of this evaluation report is to respond quickly to public access problems, issues, conflicts, and questions in an annual public format with the help of the Ware River Watershed (WRWAC). As described in the 2010 Public Access Management Plan Update for the Ware River Watershed, DCR-Watershed may adopt minor policy changes through this process, if necessary. Ultimately, this annual evaluation process and the resulting report with annual implementation plan will inform the larger Public Access Management Plan and Policy Update conducted every ten years. The next Public Access Management Plan update for the Ware River Watershed is scheduled for completion by 2018.



Photo 1. DCR road intersecting with Massachusetts Rail Trail - Rutland, MA

II. Background – Public Access Actions Summarized

Section II provides highlights for the FY2010 Year End Report and FY2011 Progress Report (July – December 2010) with general statements regarding actions taken by DCR-Watershed staff related to public access management on its lands and waters in the Ware River watershed.

Watershed Rangers continued to conduct routine patrols of the Ware River watershed, interacting with the public along the way. In FY10, Rangers logged more than 17,800 such contacts throughout both watersheds. Watershed Rangers continued to conduct daily security checks, and to enforce DCR regulations during their patrols, recording 330 violations during the FY 2010. Access gates around the reservation were checked and maintained on a regular basis. The Watershed Rangers have now taken over this task from the Labor staff. The update of the Ware River Public Access Management Plan was completed. Substantial staff time was spent cleaning up from a major wind storm that affected portions of the watershed during the spring. Substantial staff time was spent on AIS-related activities this year. This included expanded surveys for invasive species in the Ware River water bodies, and the hiring of two boat ramp monitors for sites in the Ware River watershed **(FY2010 Year End Report: July 2009-June 2010)**

Various staff participated in an annual policy review for both the Quabbin and Ware River Public Access Management Plans. A report with recommendations for changes in the policies will be prepared for review by the respective advisory committees and the public during the 2nd quarter. Watershed Rangers and Interpretive Services staff continued to disseminate information on public access policies through personal contacts, email and phone communications, written materials, the DCR website, and through the Quabbin Visitor Center. Information at Boat Launch Area bulletin boards and kiosks around the watershed were updated, as needed. New informational materials about Aquatic Invasive Species were developed and distributed. Two boat ramp monitors were hired for the summer months, and they interacted with hundreds of boat operators, mostly at boat ramps and recreational areas in the Ware River watershed. Significant staff time was also spent on issues related to the extension of the Central Mass. Rail Trail through DWSP lands in Rutland. Signage was replaced or updated, as necessary, throughout the reservation. Seasonal “No Parking” signs were installed near Long Pond in Rutland. Regular Ware River Watershed inspections continued **(FY2011 Progress Report, July - September 2010).**

A number of meetings and site visits were held regarding the proposed construction of a Rail Trail tunnel under Rt. 56 in Rutland. Only a portion of the trail is on DCR property, but substantial staff time was required (reviewing plans, discussing landowner and town residents’ issues, etc.) since the project is causing some concern (mainly related to road closings) locally. Annual reviews and evaluations of

both the Quabbin and the Ware River Public Access Management Plans were conducted during this quarter. These evaluations involved staff from most of the Region's work units, as well as the respective watershed advisory committees. Finally, during this quarter, the Quabbin Watershed Rangers reported 5,148 interactions with public users of the reservations, one emergency response situation, and 57 rule infractions in both Quabbin and Ware watersheds. **(FY2011 Progress Report, October-September 2010)**

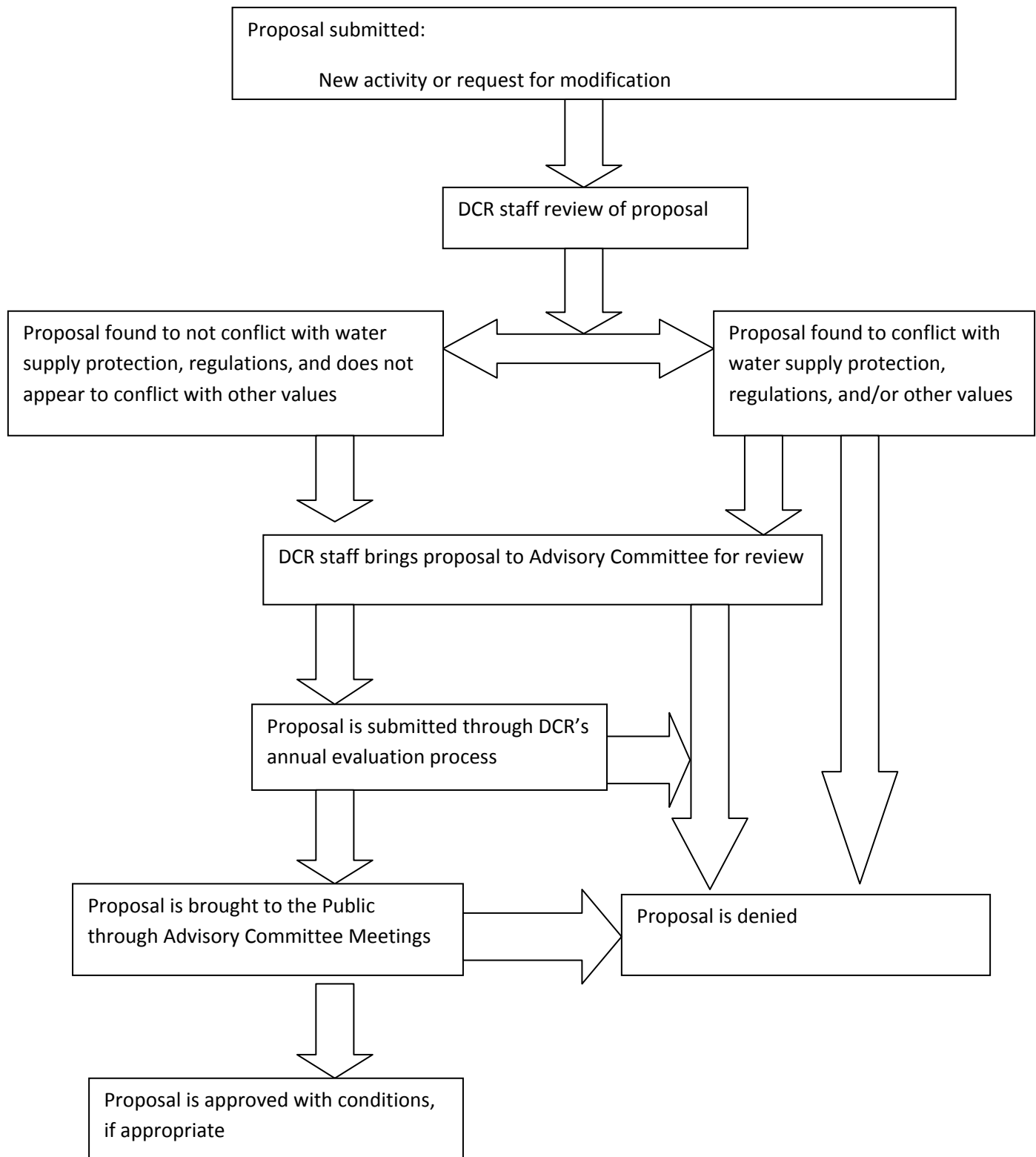
III. Evaluation Summary 2010

Section III presents DCR working group's final recommendations after a three month long staff comprehensive review of the current access policies and procedures (**Table 1**). In addition, following a request by Quabbin Watershed Advisory Committee, DCR staff has developed a decision making flow-chart to accompany its 2010 Master Policy statement for the evaluation of new access proposals (**Figure 1**).

The Working Group identified eleven areas for corrections and clarifications and one minor policy modification. In addition, the Working Group created a 2011 Implementation Plan to support the Public Access Plan policies and procedures (**Table 1**).

Overall, policy corrections and clarifications were associated with the following allowed with restrictions activities: snowmobiling, bicycling, ice fishing/ice skating, shore fishing, dogs and domestic animals, boating – motorized and non-motorized, wading, and geocaching.

Figure 1. Process for Access Proposal Evaluation as Referenced in 2010 Master Policy



Master Policy: Public Access Management

Public Access Philosophy

DCR-Watershed controls over 25,000 acres in the Ware River Watershed – part of a public drinking water supply system for over 40% of the state. In managing this resource, our primary goal is to insure a safe and adequate water supply while protecting natural and cultural resources of the Commonwealth. DCR's public access philosophy is to balance reasonable public access, legally mandated activities, and long-term resource protection. To evaluate new or expanded activity requests, DCR considers the following: potential water quality impacts, user benefits and potential conflicts, DCR land management activities, long-term ecosystem health, and biological diversity (**Figure 1**).

Annual Plan and Policy Evaluation

Starting in December 2010, DCR staff will prepare annual reports to evaluate the Plan in general, as well as any policy concerns or conflicts that arose during the year. This review will be coordinated through the Ware River Watershed Advisory Committee during their regularly-scheduled meetings. These meetings will provide an opportunity to discuss, evaluate and, if necessary, adopt any minor policy changes (proposed by DCR or by user groups), and will include a public input component. This annual process will also serve to inform the larger Plan and Policy update process that is conducted every ten years.

10-Year Plan Update Process

DCR updates its *Public Access Management Plans* every 10 years. Approximately one year before the 10-year Update deadline, DCR staff review and provide field input to an internal working group on issues or needs related to public access policies. Following this general issue identification, the DCR staff begins data collection in consultation with the Ware River Watershed Advisory Committee. In addition, DCR consults with federal and state agencies operating within the watershed (e.g., Army Corps of Engineers, DCR-Parks, Fish & Wildlife) to address inter-agency concerns or policy conflicts, and to enhance coordination. Typically, survey data is collected regarding abutters', recreational users', and other stakeholders' views on existing recreation policies. A literature review is conducted simultaneously to inform and update recreation policy decision making and formulation. A draft Plan Update is submitted for review to MA DEP. Following DEP review, the draft Plan and associated maps are presented at public meetings or public workshop(s), and posted on-line. All public input is considered and final modifications are often made based on public input. The completed Public Access Management Plan Update is posted on the Web, and hard copies or electronic copies are distributed to staff, and stakeholders.

Table 1 Access Policy Clarification and/or Modification Summary 2010

Recreational Activity	2010 Policy (generalized)	2011 Correction or Clarification	2011 Proposed Change	2011 Implementation Plan
Driving	Restricted	N/A	N/A	N/A
Snowmobiling – designated area only	Restricted to designated area only	In the field, add back snowmobile trail removed in 2010 due to the possibility of CCC being open. Remove/block 2010 detour trail in the field.	New 2011 Snowmobile access map	Require that snowmobile signs be removed by snowmobile club by April 1, 2011. Request snowmobile club install snow-fences and signage near the snowmobile bridge across Ware River and parking long near Ware River to discourage illegal snowmobile access along Rot 122 in the area of Shaft 8
Operating ORVs (e.g., ATVs, dirt bikes, etc.)	Prohibited	N/A	N/A	Continue to work EPOs Map illegal ATVs access locations.

Recreational Activity	2010 Policy (generalized)	2011 Correction or Clarification	2011 Proposed Change	2011 Implementation Plan
Bicycling – DCR-Watershed roads and rail trails only	Allowed	Allowed on roads and completed rail trails, not trails, especially unauthorized trails		Continue education efforts. Post prohibited signs (e.g., “Creation and use of unauthorized trails prohibited”), as necessary. Block, dismantle, and decommission unauthorized trails on DCR lands. Watershed Ranger patrol of trails, if necessary.
Wildlife Viewing/Nature Study	Allowed	N/A	N/A	N/A
Hiking/Walking/Snowshoeing/ Cross-country skiing	Allowed	N/A	N/A	N/A
Hunting or Trapping	Allowed	N/A	N/A	N/A
Ice Fishing and Ice Skating	Allowed	ATVs and snowmobiles are prohibited on Long Pond when frozen	N/A	Install signage on Long Pond ramp, “ATVs and Snowmobiles Prohibited”. Block ramp on Comet Pond to prevent auto access on ice; remove blocks in the spring.

Recreational Activity	2010 Policy (generalized)	2011 Correction or Clarification	2011 Proposed Change	2011 Implementation Plan
Shore Fishing	Allowed	Discourage the use of felt waders	N/A	Continue education efforts regarding AIS including signage.
Fires and Cooking	Prohibited	N/A	N/A	N/A
Dogs and Domestic Animals	Restricted	Dogs must be under owner's control	N/A	Post appropriate signage at intersection of rail trail with Ware River (dogs allowed) and Wachusett Reservoir Watersheds (dogs prohibited) on Glenwood Road.
Horseback Riding	Restricted	Allowed on roads, not trails, especially unauthorized trails	N/A	Continue education efforts. Post prohibited signs (e.g., "Creation and use of unauthorized trails prohibited"), if necessary. Block, dismantle, and decommission unauthorized trails on DCR lands. Watershed Ranger patrol of trails, if necessary

Recreational Activity	2010 Policy (generalized)	2011 Correction or Clarification	2011 Proposed Change	2011 Implementation Plan
Boating (motorized) – Off-Reservation	Restricted	All applicable AIS Program requirements in effect – see current DCR AIS pamphlet	N/A	Continue to develop an effective AIS Management Program. Continue self-certification program for boats in Ware River Watershed water bodies.
Boating (non-motorized): Canoeing/Kayaking	Restricted	All applicable AIS Program requirements in effect – see current DCR AIS pamphlet	N/A	Continue to develop an effective AIS Management Program. Continue self-certification.
Swimming/Wading	Restricted	Discourage use of felt waders	N/A	Education. Remove rope swings on Long pond. Patrol water bodies and work with local law enforcement authorities.
Operating Personal Water Crafts	Prohibited	N/A	NA	N/A
Night Access	Allowed	N/A	N/A	N/A
Overnight Camping	Prohibited	N/A	N/A	N/A
Organized Sports	Restricted	N/A	N/A	N/A
Programs/Assemblies	Restricted	N/A	N/A	N/A
Fishing Derbies	Restricted	N/A	N/A	N/A

Recreational Activity	2010 Policy (generalized)	2011 Correction or Clarification	2011 Proposed Change	2011 Implementation Plan
Geocaching/Questing – registration required	Restricted	Added Questing to clarify activity	N/A	Work with Geocaching.com. Monitor geocache registration according to DCR policy (IS). Remove unregistered caches (WR)
Trail Clearing/Trail Marking/Advertising	Prohibited	N/A	N/A	Report unauthorized trail clearing to EPOs. Continue education efforts. Post prohibited signs (e.g., “Creation and use of unauthorized trails prohibited”), if necessary. Block, dismantle, and decommission unauthorized trails on DCR lands. Watershed Ranger patrol of trails, if necessary
Possessing Alcoholic Beverages	Prohibited	N/A	N/A	N/A
Collecting/Metal Detecting	Prohibited	N/A	N/A	N/A
Target Shooting	Prohibited	Prohibited everywhere on DCR lands and waters	N/A	Post on rail trail.

Recreational Activity	2010 Policy (generalized)	2011 Correction or Clarification	2011 Proposed Change	2011 Implementation Plan
Other				Update Ware River Kiosks: 2011 Matrix, map(s), historical references, and current issues (e.g., wearing safety orange during hunting season, AIS information, etc.) (IS).

Source: (DCR Working Group 2010-2011)

IV. Public Input

DCR's final draft of this evaluation was delivered to the Ware River Watershed Advisory Committee¹ in January 2011 for final review and comment (two briefing meetings were held in 2010). Public notice of the January meeting was published on the DCR website and through word-of-mouth. Following the WRWAC January meeting, a public input notice was published on the DCR website with a hyperlink to the draft report. The public comment period was held from January 14, 2011-January 28, 2011. In addition, email notification with a hyperlink to the draft evaluation was sent to key stakeholders (e.g., legislators, regulators, sister agency staff, etc.) regarding this process, public input time period, and locations for review materials.

Ware River Watershed Advisory Committee (WRWAC)

During the January 2011 WRWAC meeting, the following input was made:

- Following a discussion of Aquatic Invasive Species (AIS), particularly *didymo*, Dick Williams made a motion that the DCR develop signs and educational materials to help inform the public of AIS issues and what they can do to prevent introducing AIS to the watershed, and that these signs recommend that all waders, to be used on the watershed, be treated to prevent the spread of *didymo*. Bill Westaway seconded the motion and it passed unanimously.
- The creation of unauthorized trail was also discussed. It was suggested that DCR block or make unusable all unauthorized trails.
- The process for access proposals schematic (Figure 1) was discussed. The WRWAC would like to be informed of all access request (even the ones that are denied due to conflicts) so they are better able to answer questions from their constituents and inform them of DCR policies. Lisa also informed the WRWAC that the 2 week public comment period for the access plan update, started January 13, 2011.
- The current access maps need updating to reflect the additional segment of the Mass Central rail trail to Shaft 8

Additional Stakeholders

- US Army Corps of Engineers reviewed the document. No comments were received.
- WSCAC reviewed the document. No comments were received.

¹ The Ware River Watershed Advisory Committee (WRWAC) was mandated in 1995 by the Massachusetts legislature MGL Ch. 92, Section 104 to advise the division on its policies and regulations regarding recreational activities, land use, and environmental, wildlife, and habitat matters with the Ware River waters. The legislation directs the specific composition of the committee. The committee was formed in 1997 and has met regularly to advise the DCR for over a decade.

V. Final Revisions with modified Matrix and Map – 2011

The final policy corrections and clarifications, and changes are best captured in the updated 2011 Public Access Matrix (**Table 2**) and accompanying maps (**Maps 1-3**) found in this report and on-line at www.mass.gov/dcr/watersupply/watershed/wareaccess09.htm

Table 2 contains the final policy and procedure revisions in an updated 2011 Public Access Summary Matrix for lands and water access on DCR lands in the Ware River Watershed. In addition, there are three access maps which have been updated and revised. This updated information will be posted on the Division's website and posted on five information kiosks throughout the watershed in the early part of 2011.

Table 2. 2011 Public Access Summary Matrix

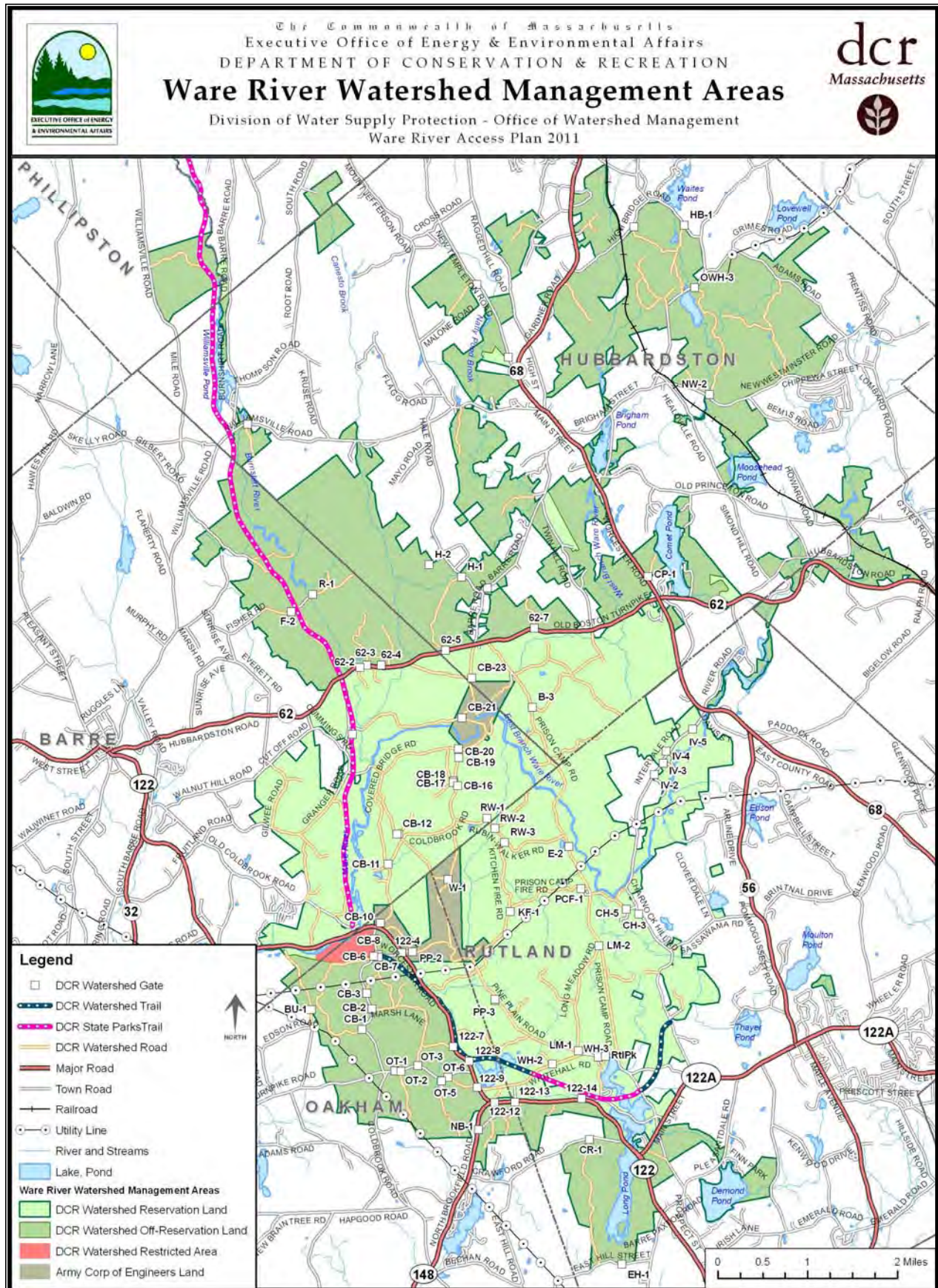
Activity	Ware River Reservation	Ware River Off-Reservation	Ware River Intake Zone
VEHICLE ACCESS			
Motorized	<input type="checkbox"/> 1	<input type="checkbox"/> 1	<input type="radio"/>
Driving - vehicles registered for public roadways			
Snowmobiling - Designated area only	<input type="checkbox"/> 2	<input type="checkbox"/>	<input type="radio"/>
Operating ORVs – ATVs, dirt bikes, etc	<input type="radio"/> 3	<input type="radio"/> 3	<input type="radio"/> 3
Non-Motorized	<input type="checkbox"/> 4	<input type="checkbox"/> 4	<input type="radio"/>
Bicycling – DCR roads only			
FOOT ACCESS			
Wildlife Viewing/Nature Study	<input type="checkbox"/> 15	<input type="checkbox"/> 15	<input type="radio"/>
Hiking/Walking/Snow-shoeing/Cross-country Skiing	<input type="checkbox"/> 15	<input type="checkbox"/> 15	<input type="radio"/>
Hunting & Trapping	<input type="checkbox"/> 5	<input type="checkbox"/> 5	<input type="radio"/>
Ice Fishing/Ice Skating	<input type="checkbox"/> 6	<input type="checkbox"/> 6	<input type="radio"/>
Shoreline Fishing	<input type="checkbox"/> 6	<input type="checkbox"/> 6	<input type="radio"/>
Fires & Cooking – includes gas grills	<input type="radio"/>	<input type="radio"/>	<input type="radio"/>
Dogs and Domestic Animals includes hunting with dogs	<input type="checkbox"/> 7	<input type="checkbox"/> 7	<input type="radio"/>
Horseback Riding –Designated routes	<input type="checkbox"/> 8	<input type="checkbox"/> 8	<input type="radio"/>
WATER ACCESS			
Boating (motorized)	<input type="radio"/> 9	<input type="checkbox"/> 10	<input type="radio"/>
Boating (non-motorized) Canoes and Kayaks	<input type="checkbox"/> 11	<input type="checkbox"/> 11	<input type="radio"/>
Swimming/Wading	<input type="checkbox"/> 12	<input type="checkbox"/> 12	<input type="radio"/>
Operating PWC (jet skis)	<input type="radio"/>	<input type="radio"/>	<input type="radio"/>
OTHER ACTIVITIES			
Night Access	<input type="checkbox"/>	<input type="checkbox"/>	<input type="radio"/>
Overnight Camping	<input type="radio"/>	<input type="checkbox"/> 13	<input type="radio"/>
Organized Sports	<input type="checkbox"/> 14	<input type="checkbox"/> 14	<input type="radio"/>
Programs/Assemblies	<input type="checkbox"/> 15	<input type="checkbox"/> 15	<input type="radio"/>
Fishing Derbies	<input type="checkbox"/> 14	<input type="checkbox"/>	<input type="radio"/>
Geocaching	<input type="checkbox"/> 16	<input type="checkbox"/> 16	<input type="radio"/>
Trail Clearing/Trail Marking/ Advertising	<input type="radio"/>	<input type="radio"/>	<input type="radio"/>
Possessing Alcoholic Beverages	<input type="radio"/>	<input type="radio"/>	<input type="radio"/>
Collecting/Metal Detecting	<input type="radio"/>	<input type="radio"/>	<input type="radio"/>
Target Shooting	<input type="radio"/>	<input type="radio"/>	<input type="radio"/>
Other	CHECK WITH DCR VISITOR CENTER 413-323-7221		
LEGEND: <input type="radio"/> Prohibited; <input type="checkbox"/> Allowed with general restrictions (below); <input type="checkbox"/> # Allowed with specific restrictions.			
Page 1 of 2			

Page 1 of 2

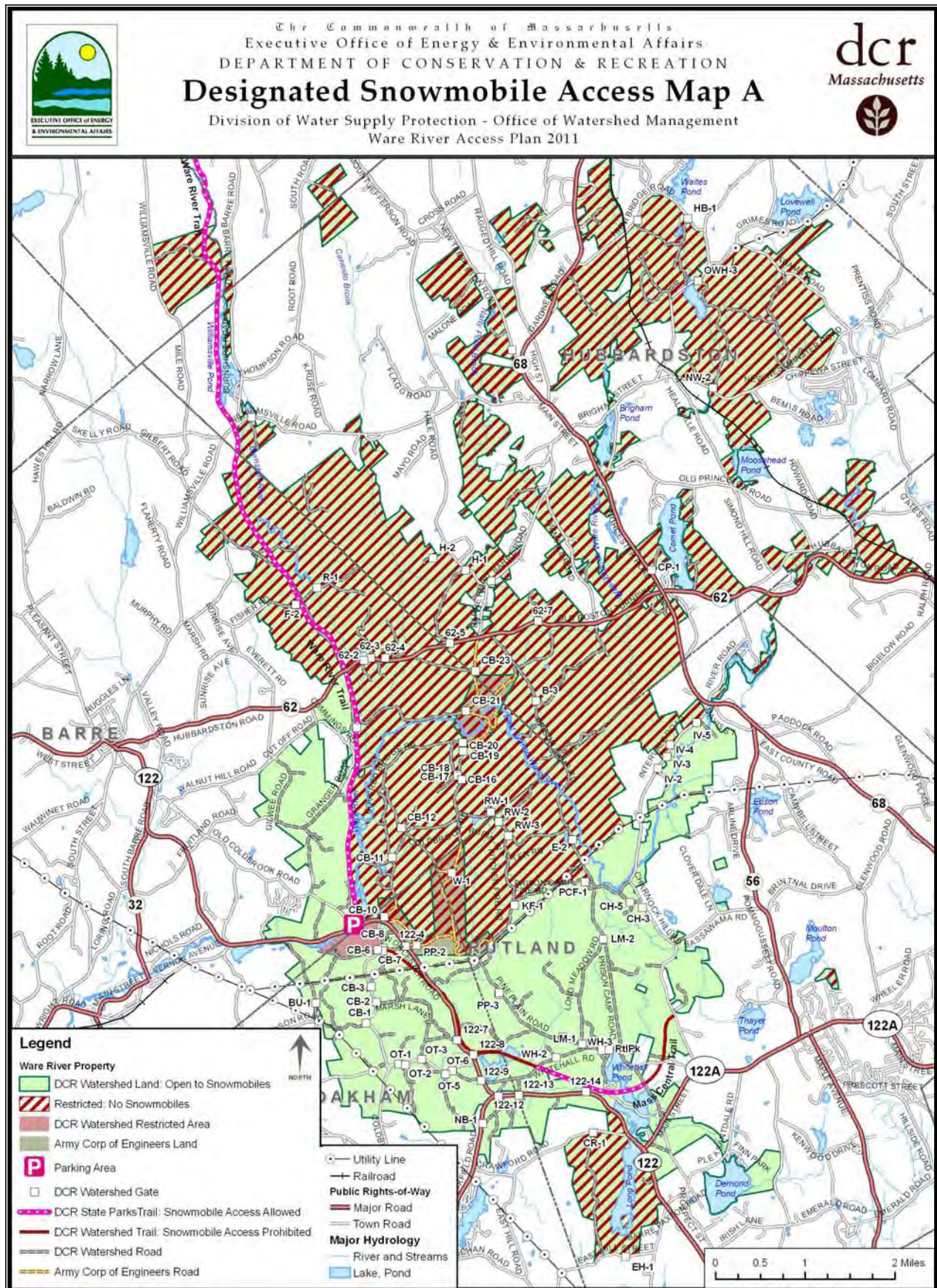
☐ General public access on DCR lands is allowed through gates/bar-ways in designated areas only. Any activity which injures or defaces the property of the Commonwealth is strictly prohibited.

DCR Endnotes: Specific Restrictions for Public Access on DCR Lands in the Ware River Watershed	
<input type="checkbox"/> 1	Registered motorized vehicles are those registered for operation on public ways. Their access is restricted to designated maintained DCR roads at open gates. Motorized vehicles are prohibited on DCR land beyond closed gates or bar-ways and within the Intake Zone. See also Snowmobiling.
<input type="checkbox"/> 2	Snowmobiles are allowed with specific restrictions on DCR designated Snowmobile Access Zone only. Restrictions include location, season, and snow depth-see Fact Sheet. DCR Designated Snowmobile Access Map is available from the Quabbin Visitor Center, or on DCR web site listed below.
<input type="checkbox"/> 3	The operation of ORVs is prohibited on DCR-Watershed lands, waters, and roads.
<input type="checkbox"/> 4	Bicycling is allowed on DCR-Watershed roads. Off-road bicycling and off-road trail riding is prohibited. Bicycling is prohibited during mud season when DCR roads are closed by gates or signs. DCR Bicycle Access Map is available from the Quabbin Visitor Center or on DCR web site listed below.
<input type="checkbox"/> 5	Hunting is allowed with a valid Massachusetts hunting license according to State regulations. State regulations prohibit hunting on Sundays. Hunting within WMA has specific restrictions. See www.mass.gov/dfwele/dfw/regulations/regulations_wma.htm
<input type="checkbox"/> 6	Fishing access is allowed with a valid Massachusetts fishing license according to State regulations.
<input type="checkbox"/> 7	The DCR requests visitors to pickup and properly dispose of any fecal waste within 100' of a tributary or surface waters. Dogs shall be under the control of their handler at all times.
<input type="checkbox"/> 8	Horseback riding access is allowed on DCR Designated Horseback Riding Routes only in the Ware River Watershed and according to specific restrictions (e.g., no riding during mud season, permit required for group rides of 15 or more, no watering of horses in tributaries, etc.) See Fact Sheet. DCR Designated Horseback Riding Routes map is available from the Quabbin Visitor Center and DCR web site listed below.
<input type="checkbox"/> 9	Motorboat use within waters of the Ware River Reservation (e.g., Whitehall Pond) is prohibited.
<input type="checkbox"/> 10	Motor boat access from DCR lands in the Ware River Off-Reservation is allowed according to the AIS Management Plan and with these restrictions. Motorboat access facilities (ramps) are provided only on DCR lands at the following locations: Brigham Pond, Demond Pond, Comet Pond, and Long Pond. <ul style="list-style-type: none"> • Boat motor size off DCR ramps is limited to 20 hp (2 stroke) and 25 hp (4 stroke). • DCR-Watershed annually issues a limited number of <i>DCR Long Pond Access Permits</i> for boats with motors greater than 20 hp. This permit allows the holder to use a 20+ hp motor on Long Pond- South basin from Memorial Day to the last day in September and between 10 AM and 6 PM.
<input type="checkbox"/> 11	Non-motorized boating access is allowed from DCR lands in the Ware River Reservation and Off-reservation according to the AIS Management Plan.
<input type="checkbox"/> 12	Limited swimming access is allowed within a designated area of Rutland State Park and Comet Pond Beach - DCR-Park managed facilities according to posted restrictions and designated season.
<input type="checkbox"/> 13	Camping includes the use of tents, trailers, lean-tos, and motor homes. Camping access is prohibited with the Ware River Reservation. Limited camping on DCR Off-Reservation is allowed with written permission from the Regional Director only. Contact the Quabbin Visitor Center for more information (413) 323-7221.
<input type="checkbox"/> 14	These activities are allowed only by written permission by the Regional Director, Quabbin Section.
<input type="checkbox"/> 15	Groups up to 25 individuals are asked to notify the DCR prior to access on DCR lands. Groups exceeding than 25 individuals or 15 horseback riders with horse (in the Ware River Watershed only) are required to submit a DCR Group Access Permit application at least 2 weeks prior to access date. Contact Quabbin Visitor Center, Ware River Field Office, or DCR's web site for an access permit application.
<input type="checkbox"/> 16	Geocache placement requires prior DCR-Watershed permission using self-verification process with registration described on Fact Sheet.
Contact information: <ul style="list-style-type: none"> ➤ Quabbin Visitor Center – Visit the Center at the Winsor Dam in Belchertown open 9-4:30 daily. (413) 323-7221 ➤ DCR Watershed Rangers – Contact the Watershed Rangers at (413) 323-0191 or mobile (617) 828-2452 ➤ Massachusetts State Police – Report violations/emergencies to the State Police 911 ➤ See DCR-Watershed's Home Page – http://www.mass.gov/dcr/watersupply/watershed/water.htm 	

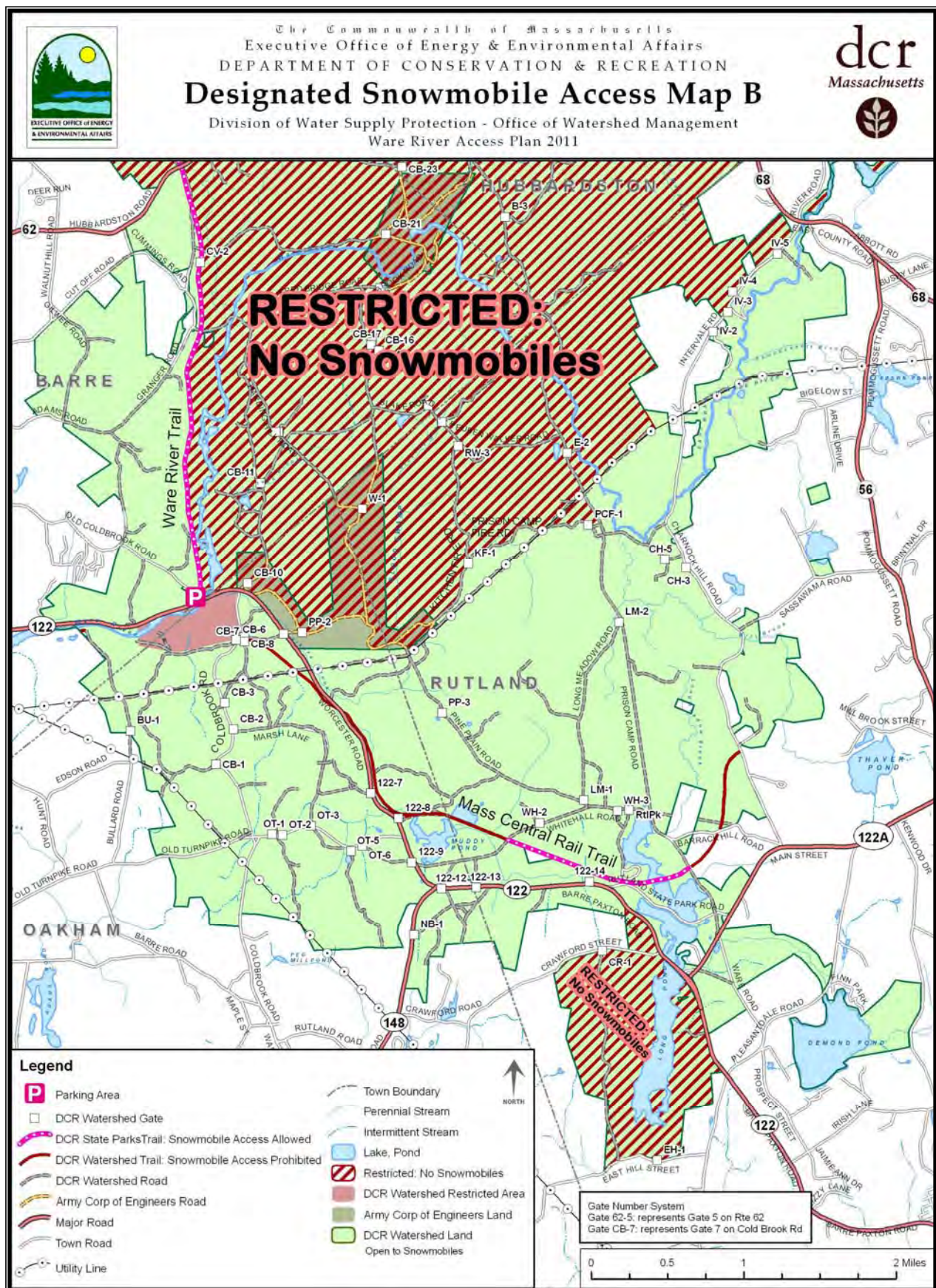
Map 1. 2011 Ware River Watershed Management Areas



Map 2. 2011 Designated Snowmobile Access Map - A



Map 3. 2011 Designated Snowmobile Access Map: B



Appendix A. 2010 Matrix and Map

Ware River Watershed Public Access Policy Summary 2010

Activity	Ware River Reservation	Ware River Off-Reservation	Ware River Intake Zone (Restricted Area)
VEHICLE ACCESS			
<i>Motorized</i>			
Driving – vehicles registered for public roadways	<input type="checkbox"/> 1	<input type="checkbox"/> 1	⊘
Snowmobiling – designated area only	<input type="checkbox"/> 2	<input type="checkbox"/>	⊘
Operating ORVs – ATVs, dirt bikes, etc.	⊘ 3	⊘ 3	⊘ 3
<i>Non-Motorized</i>			
Bicycling – DCR roads only	<input type="checkbox"/> 4	<input type="checkbox"/> 4	⊘
FOOT ACCESS			
Wildlife Viewing/Nature Study	<input type="checkbox"/> 15	<input type="checkbox"/> 15	⊘
Hiking/Walking/Snowshoeing/ Cross-country Skiing	<input type="checkbox"/> 15	<input type="checkbox"/> 15	⊘
Hunting and Trapping	<input type="checkbox"/> 5	<input type="checkbox"/> 5	⊘
Ice Fishing and Ice Skating	<input type="checkbox"/> 6	<input type="checkbox"/> 6	⊘
Shore Fishing	<input type="checkbox"/> 6	<input type="checkbox"/> 6	⊘
Fires and Cooking – includes gas grills	⊘	⊘	⊘
Dogs and Domestic Animals – includes hunting with dogs	<input type="checkbox"/> 7	<input type="checkbox"/> 7	⊘
Horseback Riding – designated routes	<input type="checkbox"/> 8	<input type="checkbox"/> 8	⊘
WATER ACCESS			
Boating (motorized)	⊘ 9	<input type="checkbox"/> 10	⊘
Boating (non-motorized) – canoes and kayaks	<input type="checkbox"/> 11	<input type="checkbox"/> 11	⊘
Swimming/Wading	<input type="checkbox"/> 12	<input type="checkbox"/> 12	⊘
Operating Personal Water Crafts – jet skis	⊘	⊘	⊘
OTHER ACTIVITIES			
Night Access	<input type="checkbox"/>	<input type="checkbox"/>	⊘
Overnight Camping	⊘	<input type="checkbox"/> 13	⊘
Organized Sports	<input type="checkbox"/> 14	<input type="checkbox"/> 14	⊘
Programs/Assemblies	<input type="checkbox"/> 15	<input type="checkbox"/> 15	⊘
Fishing Derbies	<input type="checkbox"/> 14	<input type="checkbox"/> 11	⊘
Geocaching	<input type="checkbox"/> 16	<input type="checkbox"/> 16	⊘
Trail Clearing/Trail Marking/Advertising	⊘	⊘	⊘
Possessing Alcoholic Beverages	⊘	⊘	⊘
Collecting/Metal Detecting	⊘	⊘	⊘
Target Shooting	⊘	⊘	⊘
Other	CHECK WITH DCR VISITOR CENTER		
Legend: ⊘ Prohibited; <input type="checkbox"/> Allowed with general restrictions (below); <input type="checkbox"/> Allowed with specific restrictions			

☐ General public access on DCR lands is allowed through gates and bar-ways in designated areas only. Any activity which injures or defaces the property of the Commonwealth is strictly prohibited. Night access is allowed on DCR lands in the Ware River Watershed. These policies are based on Watershed Protection regulations, 350 CMR 11.00.

Ware River Reservation: all DCR-controlled lands and waters within Rts. 122, 122A, 56, 68, and 62.

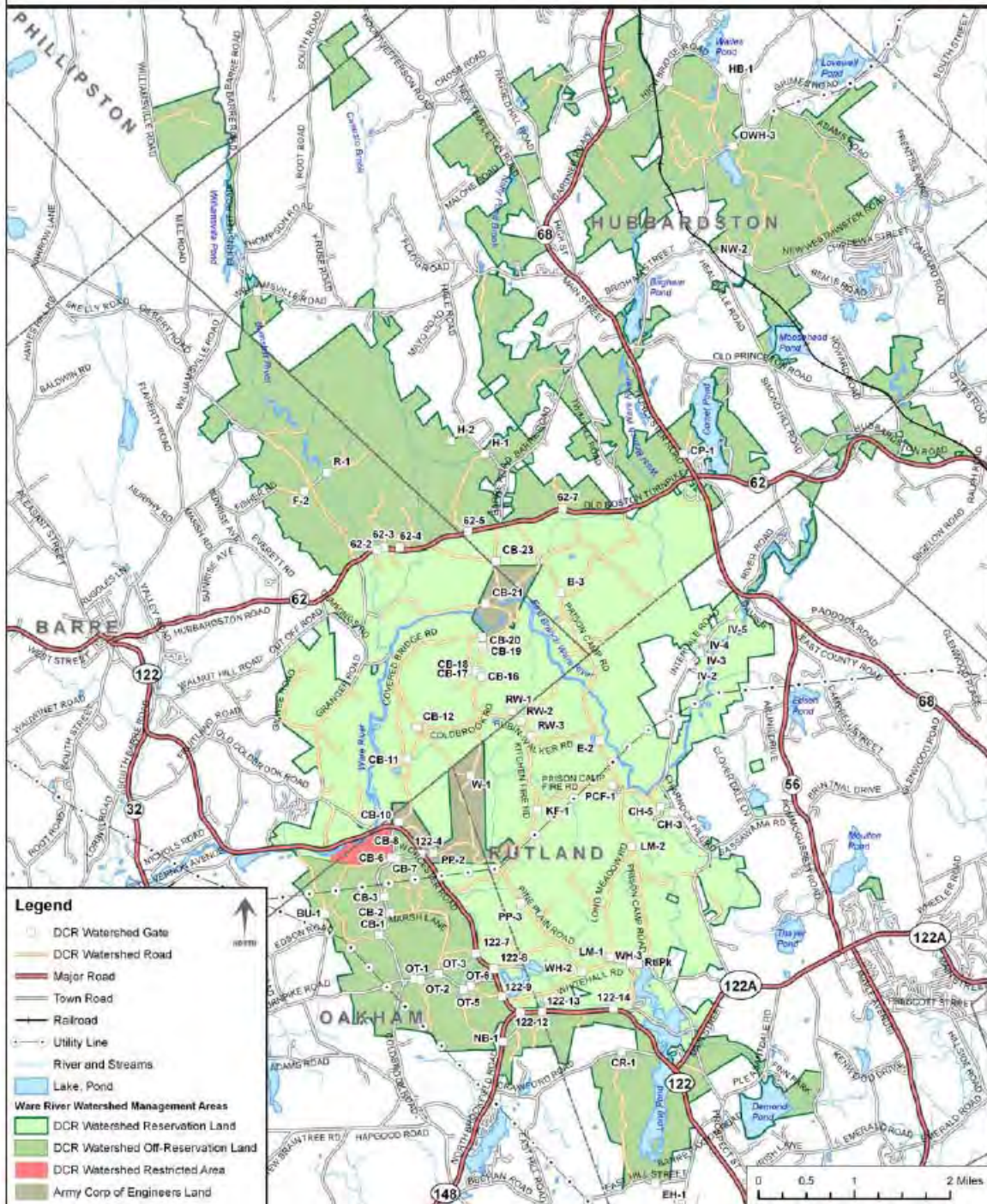
Ware River Off-Reservation: DCR-owned lands within the Ware River Watershed located outside of Rts. 122, 122A, 56, 68, and 62.

Specific Restrictions for Public Access on DCR Lands in the Ware River Watershed	
<input type="checkbox"/> 1	Registered motorized vehicles are those registered for operation on public ways. Their access is restricted to certain maintained DCR roads at open gates. Motorized vehicles are prohibited on DCR roads beyond closed gates or bar-ways and within the Intake Zone.
<input type="checkbox"/> 2	Snowmobiles are allowed with specific restrictions on DCR designated snowmobile areas only. Restrictions include season, snow depth, and mph. DCR Designated Snowmobile Access Map is available from the Quabbin Visitor Center, Ware River Field Office, or on the DCR website listed below.
<input type="checkbox"/> 3	The operation of ORVs is prohibited on DCR-Watershed lands and roads.
<input type="checkbox"/> 4	Bicycling is allowed on DCR-Watershed roads. Off-road bicycling and off-road trail riding is prohibited. Bicycling is prohibited during mud season when DCR roads are closed by gates or signs. DCR Bicycle Access Map is available from the Quabbin Visitor Center, Ware River Field Office, or on the DCR website listed below.
<input type="checkbox"/> 5	Hunting is allowed with a valid Massachusetts hunting license according to State regulations. State regulations prohibit hunting on Sundays. Hunting within WMA has specific restrictions; see www.mass.gov/dfwle/dfw/regulations/regulations_wma.htm .
<input type="checkbox"/> 6	Fishing access is allowed with a valid Massachusetts fishing license according to State regulations.
<input type="checkbox"/> 7	DCR requests visitors to pickup and properly dispose of any fecal waste within 100' of a tributary or surface waters.
<input type="checkbox"/> 8	Horseback riding access is allowed on DCR Designated Horseback Riding Routes only in the Ware River Watershed and according to specific restrictions (e.g., no riding during mud season, permit required for group rides of 15 or more, no watering of horses in tributaries, etc.); see Fact Sheet for additional information. DCR Designated Horseback Riding Roads and Trails Map is available from the Quabbin Visitor Center, Ware River Field Office, or DCR website listed below.
<input type="checkbox"/> 9	Motorboat use within waters of the Ware River Reservation (e.g., Whitehall Pond) is prohibited.
<input type="checkbox"/> 10	Motorboat access from DCR lands in the Ware River Off-Reservation is allowed according to the AIS Management Plan and with these restrictions: <ul style="list-style-type: none"> ➤ Motorboat access facilities (ramps) are provided only on DCR lands at the following locations – Brigham Pond, Demond Pond, Comet Pond, and Long Pond. ➤ Boat motor size off DCR ramps is limited to 20 hp(2 stroke) and 25 hp (4 stroke). ➤ DCR annually issues a limited number of DCR Long Pond Access Permits for boats with motors greater than 20 hp. This permit allows the holder to use a 20+ hp motor on Long Pond from Memorial Day to the last day in September between 10 AM and 6 PM.
<input type="checkbox"/> 11	Non-motorized boating access is allowed from DCR lands in the Ware River Reservation and Off-reservation according to the AIS Management Plan.
<input type="checkbox"/> 12	Limited swimming access is allowed within a designated area of Rutland State Park and Comet Pond Beach – DCR-Park managed facilities – according to posted restrictions and designated season.
<input type="checkbox"/> 13	Camping includes the use of tents, trailers, lean-tos, and motor homes. Camping access is prohibited within the Ware River Reservation. Limited camping on DCR Off-Reservation is allowed only with written permission from the Regional Director. Contact the Quabbin Visitor Center for more information at (413) 323-7221.
<input type="checkbox"/> 14	These activities are allowed only by written permission by the Quabbin Section Regional Director.
<input type="checkbox"/> 15	Groups up to 25 individuals are asked to notify DCR prior to access on DCR lands. Groups exceeding more than 25 individuals or 15 horseback riders with horses (in the Ware River Watershed only) are required to submit a DCR Group Access Permit application at least two weeks prior to access date. Contact Quabbin Visitor Center, Ware River Field Office, or DCR's website for an access permit application.
<input type="checkbox"/> 16	Geocache placement requires prior DCR-Watershed permission using self-verification process with registration described on Fact Sheet.
Contact information: <ul style="list-style-type: none"> ➤ Quabbin Visitor Center – Visit the Center at the Winsor Dam in Belchertown open 9-4:30 daily; (413) 323-7221. ➤ DCR Watershed Rangers – Contact the Watershed Rangers at (413) 323-0191 or mobile (617) 828-2452. ➤ Massachusetts State Police – Report violations/emergencies to the State Police at 911 ➤ DCR-Watershed website – www.mass.gov/dcr/watersupply/watershed/water.htm 	

Ware River Watershed Management Areas



THE COMMONWEALTH OF MASSACHUSETTS
Executive Office of Energy & Environmental Affairs
DEPARTMENT OF CONSERVATION & RECREATION
Ware River Watershed Management Areas
Division of Water Supply Protection - Office of Watershed Management
Ware River Access Plan 2010



Appendix B. WRWAC Meeting Minutes and Letters – 2010

Ware River Watershed Advisory Committee

Contact: Jeff Schaaf at (413) 477-6646

Meeting Minutes

Meeting Date: September 16, 2010

Members: (members in BOLD were present)

Massachusetts Council of Sportsmen: Robert Carey, William Label

Alternate:

Worcester County League of Sportsmen: Dave Papale

Alternate: (Paul Thompson)

Trout Unlimited: **Jeffrey Schaaf, Co-chairman**

Alternate: (empty)

A Rod and Gun Club: **Chris Duggan**

Alternate: (Brian Waterman)

Barre Selectboard: **Martha Varnot**

Alternate: Edward Yaglou

Hubbardston Selectboard: Thomas Bratko

Alternate: (empty)

Oakham Selectmen: Thomas Hughes

Alternate: Henry Stone

Rutland Selectmen: **Charles R. Williams**

Alternate: (empty)

Barre Historical Society: Burt Frost

Alternate: Peg Frost

Hubbardston Historical Society: (empty)

Alternate: (empty)

Oakham Historical Society: Wes Dwelly

Alternate: **Bill Mucha**

Rutland Historical Society: **Helen Viner**

Alternate: Tim Nahrwold

Massachusetts Wildlife Federation: Bill Westaway, **Co-chairman**

Alternate: Thomas Berube

Massachusetts Audubon Society: Charles Delaney

Alternate: (empty)

Sierra Club: Matt Hopkinson

Alternate: (empty) Upper Ware River Watershed Association: **Donald Rich**

Alternate: **Edward Yaglou**

General Public: Mark DuBois

Alternate: (empty)

Visitors

DCR DWSP Representative(s):

Lisa Gustavsen

Herm Eck

Agenda

Public Access Plan Update

Forest Management Update

Members Issues

Land management Plan – Forestry lots update

Jeff passed out a letter sent to Commissioner Sullivan and signed by Senator Brewer and Representative Evangelidis recommending that the DCR proceed with existing timber sales.

A brief discussion of the status of the Ware River forest management program followed. Most of the existing timber sales have been modified and given a green light to start. One sale has been started on the Ware River Watershed. The science and technical advisory committee has met twice and is expected to have a report out soon for the public to comment on. Public comments will also be requested at an upcoming WRWAC meeting.

Public Access Plan Update

Lisa Gustavsen outlined the new, annual update procedures for the Ware Public Access Management Plan (2010). She is requesting any proposed minor changes to the public access plan be brought to her attention over the next two months so that they can be addressed in the annual update of the plan. It was suggested that WRWAC members solicit input on access issues, from the members of the organizations that they represent. Ideally comments on access issues would be written and include proposed solutions to address the issue. Comments can be sent to Lisa's email address: lisa.gustavsen@state.ma.us or to her attention b 485 Ware Road, Belchertown, MA 01007.

Members Issues

An update on aquatic invasive species and the boat ramp monitoring program was requested for the next WRWAC meeting. DCR aquatic biologist, Paula Packard, will be asked to give an update at the next meeting.

Local cable stations are looking for educational video they can air. DCR was ask if they could supply any videos. DCR will check with the visitor center at Quabbin.

The need for rangers and surveillance cameras on the watershed was discussed.

Weed control at Long pond and Whitehall pond was also discussed.

Future meeting dates:

Ware River Watershed Advisory Committee (WRWAC) Thursday October 14, 2010 at 7:00pm at the Franklin Wood Studio in Rutland behind the Police/Fire station

Quabbin Watershed Advisory Committee (QWAC) – December 13, 2010 at Quabbin Visitor Center

Draft Agenda

Ware River Watershed Land Management Plan, review of current WRW forestry lots

Aquatic invasive species Update: 2010 boating Season, Boat ramp monitors

draft of Access Plan evaluation

Members Issues

Ware River Watershed Advisory Committee

Contact: Jeff Schaaf at (413) 477-6646

Meeting Minutes

Meeting Date: October 14, 2010

Members: (members in BOLD were present)

Massachusetts Council of Sportsmen: Robert Carey, William Label

Alternate:

Worcester County League of Sportsmen: Dave Papale

Alternate: (Paul Thompson)

Trout Unlimited: **Jeffrey Schaaf, Co-chairman**

Alternate: (empty)

A Rod and Gun Club: Chris Duggan

Alternate: (Brian Waterman)

Barre Selectboard: Martha Varnot

Alternate: **Edward Yaglou**

Hubbardston Selectboard: **Thomas Bratko**

Alternate: (empty)

Oakham Selectmen: Thomas Hughes

Alternate: Henry Stone

Rutland Selectmen: **Charles R. Williams**

Alternate: (empty)

Barre Historical Society: **Burt Frost**

Alternate: **Peg Frost**

Hubbardston Historical Society: (empty)

Alternate: (empty)

Oakham Historical Society: Wes Dwelly

Alternate: **Bill Mucha**

Rutland Historical Society: **Helen Viner**

Alternate: Tim Nahrwold

Massachusetts Wildlife Federation: Bill Westaway, **Co-chairman**

Alternate: Thomas Berube

Massachusetts Audubon Society: Charles Delaney

Alternate: (empty)

Sierra Club: **Matt Hopkinson**

Alternate: (empty) Upper Ware River Watershed Association: **Donald Rich**

Alternate: Edward Yaglou

General Public: **Mark DuBois**

Alternate: (empty)

Visitors

DCR DWSP Representative(s):

Dave Small; Assistant Regional Director

Paula Packard; Aquatic Biologist

Rebecca Budaj; Environmental Analyst

Herm Eck; scribe

NOTICE:

The location for the next WRWAC meeting has been changed from the Franklin Woods Studio in Rutland to the Old Town Hall in Barre. The date and time for this meeting has remained the same January 13, 2011 at 7:00. This will be a joint meeting with the Quabbin Watershed Advisory Committee, stakeholders from the Wachusett Reservoir Watershed, and the general public. The agenda will include a report from the chairman of the Science and Technical Advisory Committee (STAC), that has reviewed the forest management principles and practices used on watershed lands.

Agenda

Public Access Plan Update

Aquatic invasive species Update: 2010 boating Season, Boat ramp monitors

Members Issues

A motion was made to approve the minutes from the WRWAC meeting held on June 10, 2010. This motion passed unanimously without comment.

Aquatic invasive species Update: 2010 boating Season, Boat ramp monitors

Paula Packard, Aquatic Biologist for the DCR, described the new boat ramp monitoring program and provided an update on some of the aquatic invasive research that she is involved in. Two seasonal employees monitored boat launching areas throughout the watershed to ensure compliance with DWSP aquatic invasive protocol. Ed Yaglou suggested that the term boat on the self inspection form be changed to make it clear that canoes and kayaks also need to be inspected. Paula informed the group that all the zebra mussels placed in tanks of Quabbin water died.

Public Access Plan Update

Dave Small reported that the Brigham road foot bridge is now in place. Rebecca Budaj reported on some unauthorized trails that have been developed in the Muddy pond area. These trails are well built but not part of the recreation access plan. She ask if anyone had any information on who was building them and why.

Members Issues

Ed Yaglou mentioned plans to extend the rail trail into Barre. Dick Williams mentioned that fishermen are getting parking tickets because of the no parking signs near the Rutland cemetery. Jeff Schaaf, Helen Viner, Dick Williams and others expressed concern over these no parking signs because cemetery visitors and fishermen should be allowed to park in this area. Dick also ask if DCR had any video tapped programs that could be used on local cabal stations. Mark Dubois requested permission to place bog bridges on some wet sections of the Midstate Trail in Rutland. Dave requested information from the Rutland Con Com and DCR EQ staff before bog bridge installation.

Future meeting dates: Thursday January 13, 2011 at 7:00 at the Old Town Hall in Barre, off Exchange Street

Agenda

STAC Report

Public Access Update

Approval of minutes

Member Issues

Ware River Watershed Advisory Committee

Contact: Jeff Schaaf at (413) 477-6646

Meeting Minutes

Meeting Date: January 13, 2011

Members: (members in BOLD were present)

Massachusetts Council of Sportsmen: Robert Carey, William Label

Alternate:

Worcester County League of Sportsmen: Dave Papale

Alternate: (Paul Thompson)

Trout Unlimited: **Jeffrey Schaaf, Co-chairman**

Alternate: (empty)

A Rod and Gun Club: Chris Duggan

Alternate: (Brian Waterman)

Barre Selectboard: **Martha Varnot**

Alternate: **Edward Yaglou**

Hubbardston Selectboard: **Thomas Bratko**

Alternate: (empty)

Oakham Selectmen: Thomas Hughes

Alternate: Henry Stone

Rutland Selectmen: **Charles R. Williams**

Alternate: (empty)

Barre Historical Society: **Burt Frost**

Alternate: **Peg Frost**

Hubbardston Historical Society: (empty)

Alternate: (empty)

Oakham Historical Society: Wes Dwelly

Alternate: **Bill Mucha**

Rutland Historical Society: **Helen Viner**

Alternate: Tim Nahrwold

Massachusetts Wildlife Federation: **Bill Westaway, Co-chairman**

Alternate: Thomas Berube

Massachusetts Audubon Society: Charles Delaney

Alternate: (empty)

Sierra Club: Matt Hopkinson

Alternate: (empty) Upper Ware River Watershed Association: Donald Rich

Alternate: **Edward Yaglou**

General Public: Mark DuBois

Alternate: (empty)

Visitors

DCR DWSP Representative(s):

Dean Zuppio

Dave Small; Assistant Regional Director

Lisa Gustavsen: Environmental Analyst

Herm Eck; scribe

Agenda

Public Access Plan Update

STAC Update

Members Issues

Public Access Plan Update

Lisa Gustavsen discussed the Ware River public access plan update procedure and the progress already made on the update. After handing out a draft evaluation report of the update, she then requested input from the WRWAC members. A discussion of AIS, particularly didymo, followed. Dick Williams

made a motion that; The DCR develop signs and educational materials to help inform the public of AIS issues and what they can do to prevent introducing AIS to the watershed, and that these signs recommend that all waders, to be used on the watershed, be treated to prevent the spread of didymo. Bill Westaway seconded the motion and it passed unanimously. The creation of unauthorized trail was also discussed. It was suggested that DCR block or make unusable all unauthorized trails. The process for access proposals schematic was discussed. The WRWAC would like to be informed of all access request (even the ones that are denied due to conflicts) so they are better able to answer questions from their constituents and inform them of DCR policies. Lisa also informed the WRWAC that the 2 week public comment period for the access plan update, started January 13, 2011.

STAC Update

Dave Small informed the WRWAC that the STAC was still working on its report, evaluating watershed forest management practices but hoped to have it ready for a joint WRWAC - QWAC public meeting soon. Many WRWAC members are concerned that they will not have an opportunity to read and discuss the STAC report prior to the public meeting. They made a request to have the WRWAC members receive a copy of the STAC report at least 2 weeks prior to a public meeting. WRWAC meetings were then scheduled for February and March with the hope of reviewing the STAC report in February before a joint WRWAC – QWAC in March where the STAC report will be presented to the public.

Members Issues

Bill Mucha requested another jersey barrier and some snow fence be placed near the snowmobile bridge to help direct the snowmobilers away from the MWRA buildings. Ed Yaglou suggested that the DCR access maps have a symbol indicating exactly where the gates are located. The current maps indicate gates but it is sometimes difficult to determine which road is gated. Tom Bratko inquired about the DCR position on windmills on the property on Mt. Jefferson road that DCR holds the CR on. Dave Small informed Tom that if it is not allowed in the CR then it can't happen. Tom also informed the WRWAC that there are plans to put an asphalt batch plant in Pitcherville (off watershed) and that 4 deer carcasses were found in an old foundation on Mt. Jefferson road. Tom also inquired about doing an ice dive at Commet pond from private property.

Tentative Future meeting dates: depending on progress of STAC report

Thursday February 17, 2011 at 7:00 location to be determined

Thursday March 17, 2011 at 7:00 location to be determined

Agenda

STAC Report

Approval of minutes

Member Issues