

# Gleasondale Road | Stow, MA

## BRIDGE REPLACEMENT



### PROJECT SCOPE

The Gleasondale Road Bridge will have its deck, beams, and northern abutment replaced. The new bridge will:

- Restore two-way traffic
- Restore 6-foot sidewalks on both sides
- Provide 5-foot bicycle-accommodating shoulders on both sides
- Meet current design and safety standards

### PURPOSE & NEED

Since a safety inspection in 2015, the bridge has been limited to carrying one lane of alternating traffic and one sidewalk, with temporary traffic signals to control traffic. The bridge carries Route 62 over the Assabet River. It provides local access to the Gleasondale Historic Village and is an important commuter and trucking route between Stow and Hudson. The corridor is also used by emergency response among several towns. Following a public design process in 2016-2019, the Massachusetts Department of Transportation (MassDOT) will begin work to replace the Gleasondale Road Bridge.

### PROJECT SCHEDULE

#### Summer 2021 – Demolish Eastern Side

- Vehicle and pedestrian traffic remain on western side
- Potential closure/ detour: Deck removal

#### Fall 2021 – Replace Eastern Side

- Vehicle and pedestrian traffic remain on western side
- Potential closure/ detour: setting new beams

#### Winter 2021/ 2022 – Demolish Western Side

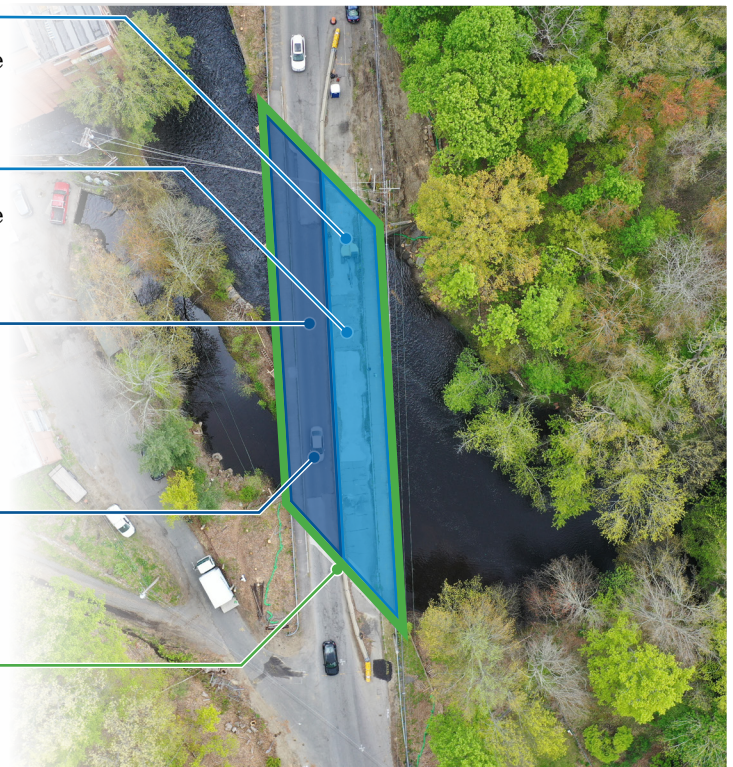
- Move vehicle and pedestrian traffic onto completed eastern side
- Potential closure/ detour: Deck removal

#### Spring 2022 – Replace Western Side

- Vehicle and pedestrian traffic remain on east side
- Potential closure/ detour: setting new beams

#### Summer 2022 – Project Complete

- Eastern and western sides complete
- Temporary traffic light is removed



### HOW TO STAY INFORMED

Weekly construction updates and project informational materials can be found on the project website:

[mass.gov/gleasondale-road-bridge-replacement-project](https://mass.gov/gleasondale-road-bridge-replacement-project)

Send your questions and comments to the project email:

[gleasondalebridgestow@dot.state.ma.us](mailto:gleasondalebridgestow@dot.state.ma.us)