



# GREEN LINE EXTENSION PROJECT



**massDOT**  
Massachusetts Department of Transportation

1



GLX Community Working Group  
Monthly Meeting  
February 4, 2020

# Agenda

## Welcome & Introduction

- Terry McCarthy, GLX – MBTA

## Safety

- Michael Weatherred, GLXC Health, Safety & Security Manager

## Bridge Schedule Update

- Terry McCarthy, GLX – MBTA

## Construction Update

- Jeff Wagner, GLXC Public Involvement Manager



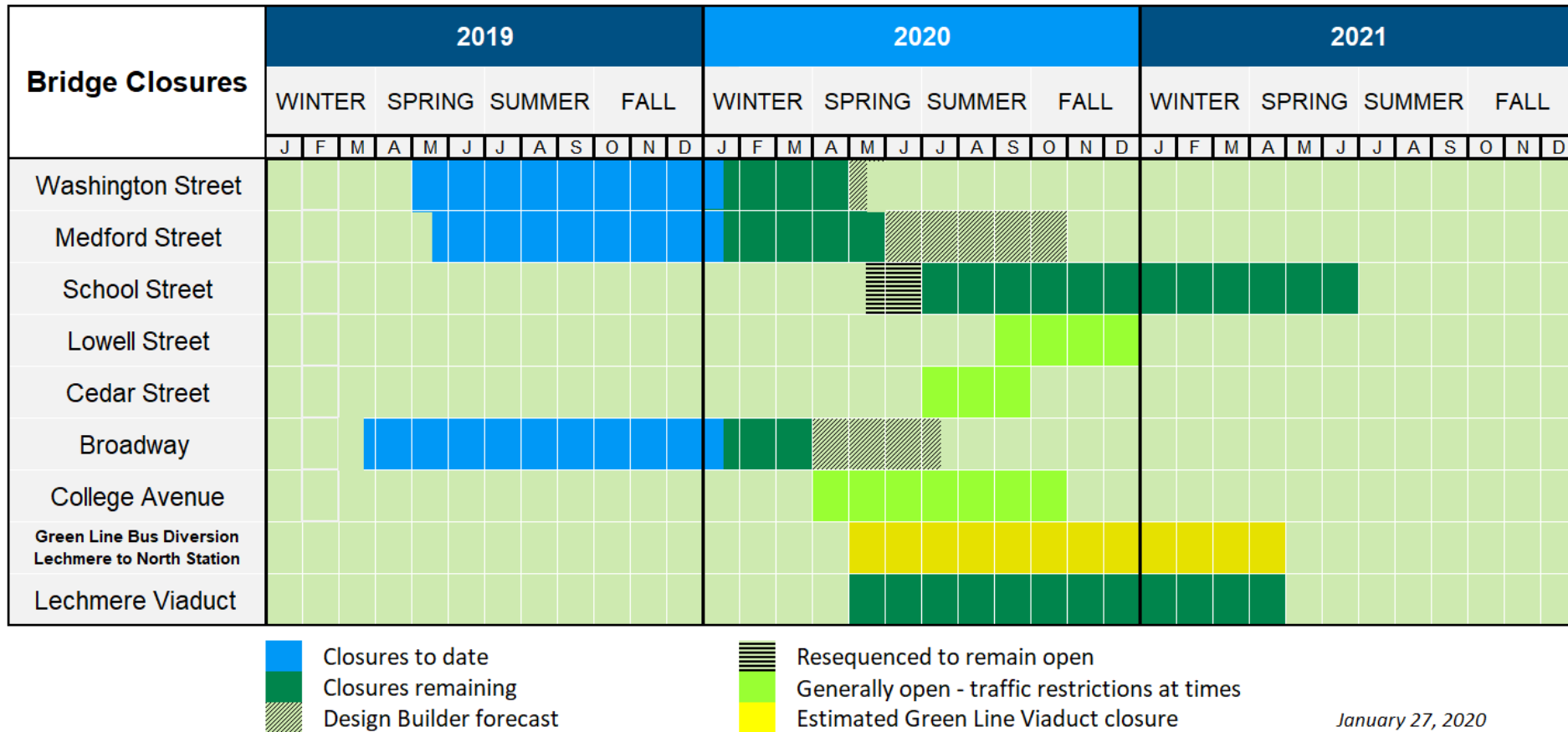
# MBTA Update



***massDOT***  
Massachusetts Department of Transportation



# Bridge Schedules



January 27, 2020



# Broadway Bridge Update

## Water Quality Remediation

### Excavation Testing

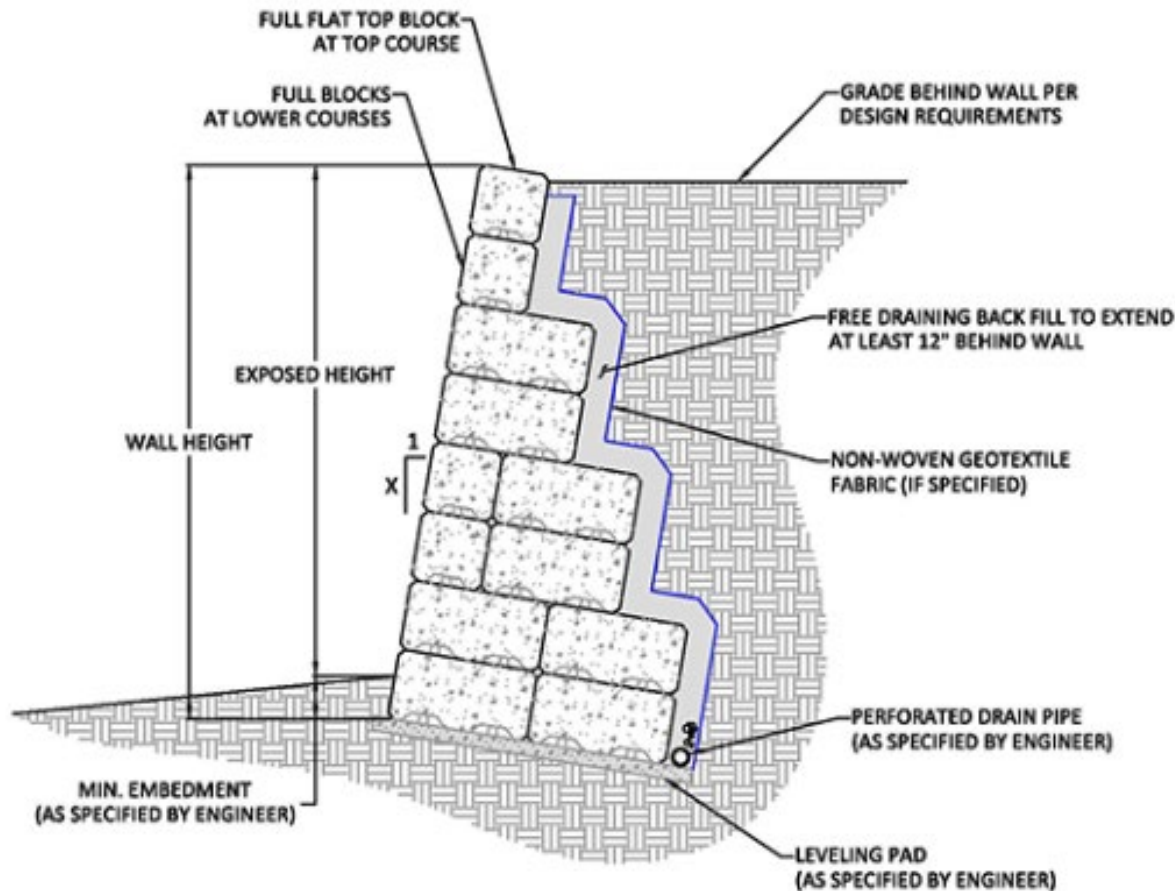
- All excavation is tested
- If contaminated, it is replaced with clean/tested backfill
- Petroleum groundwater and soil contaminants were found
- Source – nearby gas station
  - Tanks were removed last week
- Environmental Determination
  - No significant risk to human health or safety



Looking south from future Ball Square Station site

# Broadway Bridge Update (cont.)

## Broadway Bridge – Facsimile of Granite Block Historic Foundation\*



Three Previous Bridges  
Prior to GLX

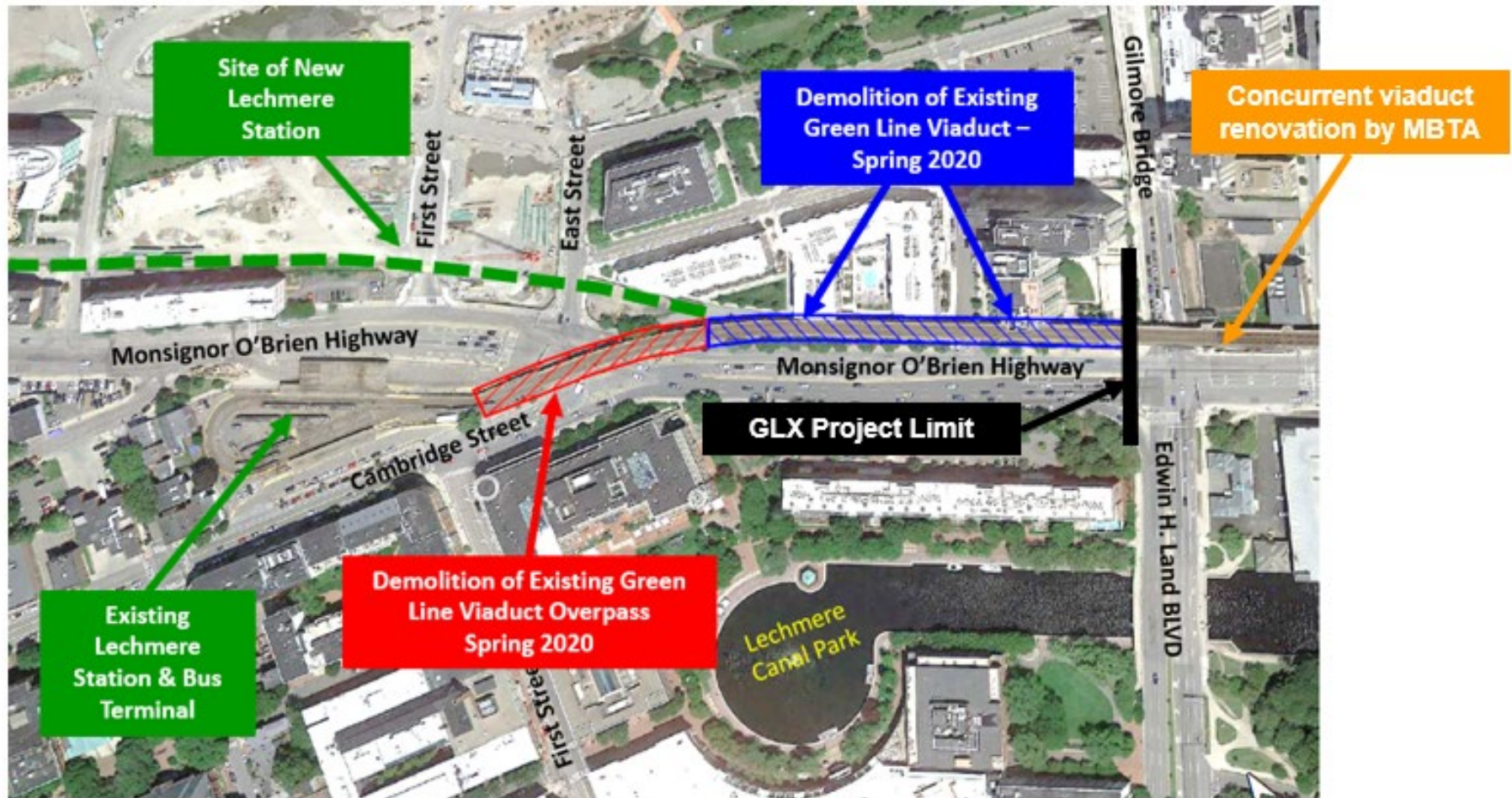
Gravity Style Retaining  
Wall

Granite remnants create  
obstructions throughout  
the foundation Work

*\*Above drawing depicts a typical granite block bridge abutment, not the actual remnants found onsite.*



# Lechmere Station Demolition & New Viaduct Section





# Lechmere Station Demolition & Bus Diversion





# GLX-C Safety Update



***massDOT***  
Massachusetts Department of Transportation



# Safety & Security

- **GLXC All Hands Meetings – Every other Month.**
- **GLXC White Hats Alignment – 3<sup>rd</sup> Tuesday of Each Month**
- **GLXC Craft Safety Roundtable – 3<sup>rd</sup> Wednesday of Each Month**
- **GLXC Safety Professionals Summit – 4<sup>th</sup> Wednesday of Each Month**
- **GLXC Safety & Security Topic – Every Sunday**
- **GLXC Weekly Safety Audit Checklist – Every Sunday**
- **GLXC Safety & Security Orientation – Every Monday**
- **GLXC Keolis RWP Training – Every Tuesday**
- **GLXC Monthly Safety Report – 7<sup>th</sup> of Each Month**
- **GLXC Quarterly Safety Report – 15<sup>th</sup> on first month of quarter**





# TAKE 5 FOR SAFETY



***massDOT***  
Massachusetts Department of Transportation





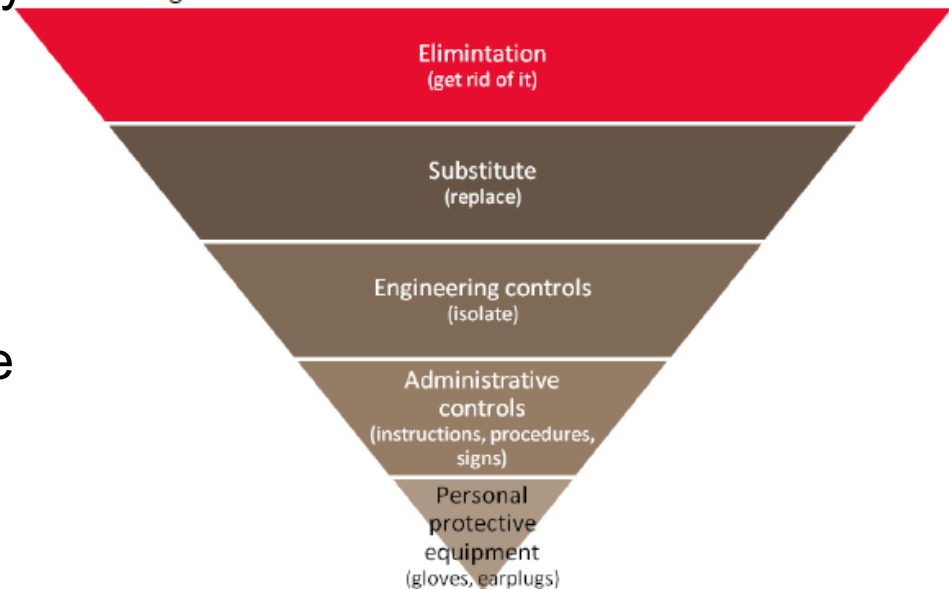
# Take 5 for Safety (cont.)

- **When you are performing a task:**

- Which was not covered on the initial STA
- Which is not associated with the task covered in the STA
- When working with no more than one other person
- When performing ancillary tasks

- **Who completes :**

- Lone Workers
- Truck Drivers
- Equipment Operators
- Personnel Meeting Above



# Take 5 for Safety (cont. 2)



## 1 - Think through the Task

Break it into steps. Have a clear plan.



## 2 - Look for the Hazards

Look close, wide, above, behind. Look for concealed hazards.



## 3 - Identify the Controls

Identify controls to eliminate/reduce the risk of the hazard



## 4 - Make the Change

Implement the Controls



## 5 - Do the job Safely

Stay tuned to changes. Stop the job if unsafe





# GLX-C Construction Update



# Construction Update

## Washington St. to Sycamore St.

- Commuter rail in this area has been relocated to permanent location
- Old track in area is now being pulled up and concrete barrier moved from east to west side of alignment





## Washington St. to Sycamore St.

**West side work zone in this area has been cleared for:**

- Demolishing remaining portion of Washington St. overpass
- Medford Bridge modification
- Retaining wall construction
- Excavation of hillside on west side of alignment
- Drainage installation
- Start of station work at East Somerville Station
- East side panel installation at night



# Construction Update (cont. 3)

## Washington St. to Sycamore St.

### West side work zone separation barrier



Looking southeast from Walnut Street



# Construction Update (cont. 4)

## Sycamore St. to Cedar St.

- Completing soil removal, drainage installation, retaining wall work and building up track bed





# Construction Update (cont. 5)

## Cedar St. to south of College Ave

- Drainage tie-in at Granville Ave and Winchester St.
- Broadway Bridge: Clean-up of recently poured central pier and east abutment installation underway





# Construction Update (cont. 6)

## Union Square Station Area

- Foundation construction continues at future Union Square Station
- Retaining wall construction and sheet pile driving progressing behind GLXC office & Target



## Lechmere Area

- Foundation drilling complete between BET area and Water St.
- Column construction is nearly complete with pier cap concrete pours and steel placement following close behind
- Steel placement across East St. continues to advance toward Water St. Work includes day & night operations with some temporary road closures





## Lechmere Area

- Steel placement across East St. continues to advance toward Water St. north





# Construction Update (cont. 9)

## Red Bridge / Boston Engine Terminal Area Steel placement across Fitchburg Viaducts



## Boston Engine Terminal Area

- Concrete pier placement is complete in the BET area. Cap and decking work moves forward thanks to favorable weather conditions





## Boston Engine Terminal Area

- Concrete pier placement is complete in the BET area. Cap and decking work moves forward thanks to favorable weather conditions





## Vehicle Maintenance Facility

- Retaining wall work and drainage installation continues
- Foundation work on VMF and Transportation Building underway



## Vehicle Maintenance Facility

- Retaining wall work and drainage installation continues
- Foundation work on VMF and Transportation Building underway





## Gilman Square Station Area

- The traction power substation is starting to take shape
- Soil anchor installation to start soon along retaining wall at high school





## Ball Square Station Area

- Work is advancing on the utility corridor north of Broadway
- Installation of 48" Fiberglass Reinforced Plastic pipe to follow
- The traction power substation is also starting to take shape
- Both east abutment and center pier concrete structures progressing



## Ball Square Station Area

- Work is advancing on the utility corridor north of Broadway
- Installation of 48" Fiberglass Reinforced Plastic pipe to follow
- The traction power substation is also starting to take shape
- Both east abutment and center pier concrete structures progressing





# Outreach

## GLX Hotline and Response to Comments/Requests

- 1,057 Inquiries thru Hotline, e-mail or direct contact with outreach staff (as of Jan. 29)
- 963 actions closed out
- Lechmere Station closing outreach major communications campaign in early 2020



# Outreach (cont.)

## GLX Community Connection Team

- Red Cross Blood Drive on Jan. 31 at the GLX Project Office
- 30 construction personnel participated





# Discussion

---

Q & A

