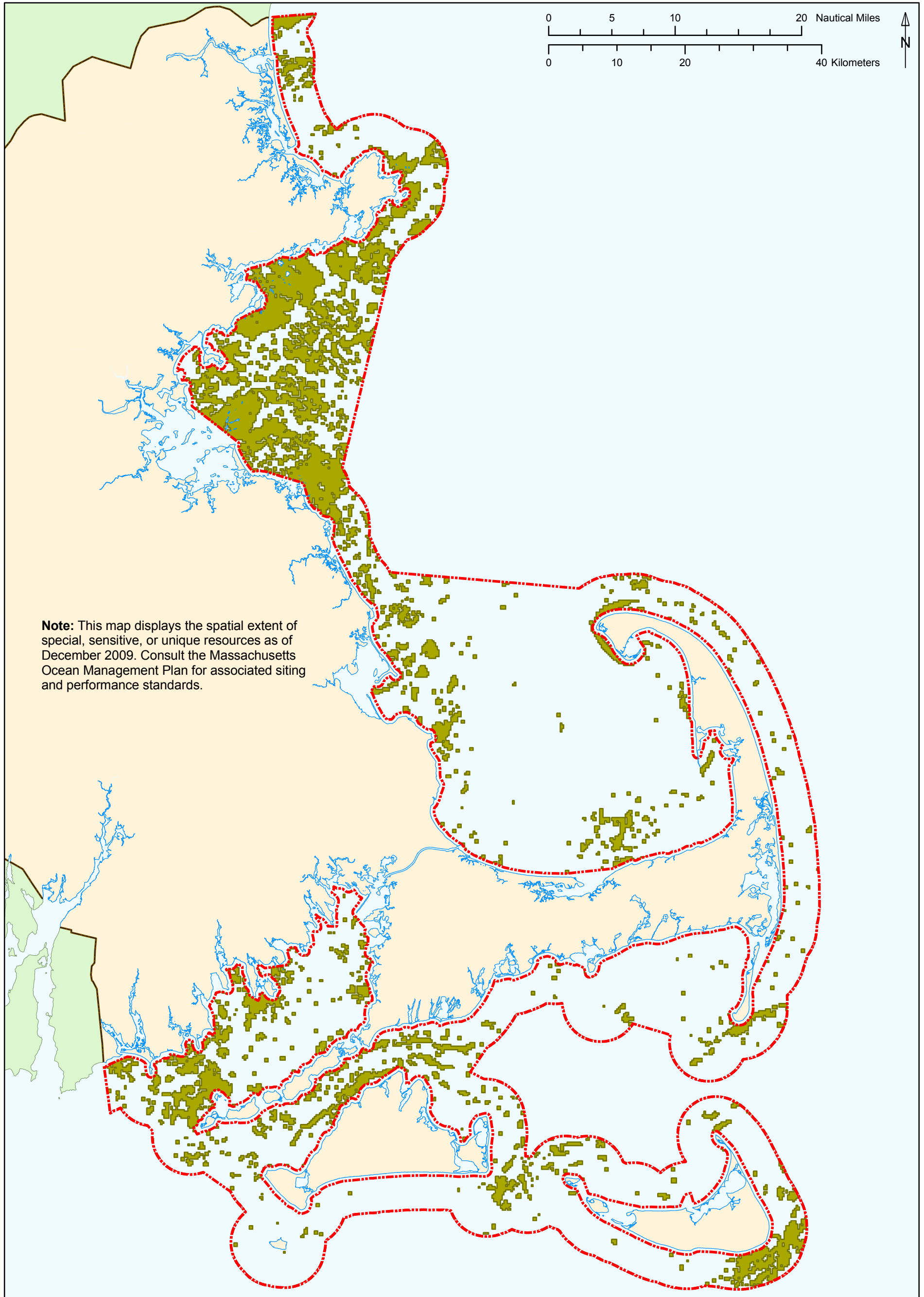




Figure 2-10 Special, sensitive, or unique resource: hard/complex seafloor



Note: This map displays the spatial extent of special, sensitive, or unique resources as of December 2009. Consult the Massachusetts Ocean Management Plan for associated siting and performance standards.



-  Massachusetts ocean management planning area boundary¹
-  Hard/complex seafloor¹

Data source: ¹Massachusetts Office of Coastal Zone Management.



Map coordinate system: North American Datum of 1983 (NAD83), Massachusetts State Plane Coordinate System, Mainland Zone (FIPS zone 2001), meters.