



New England Wind

Project update for the Massachusetts Fisheries Working Group

October 14, 2022

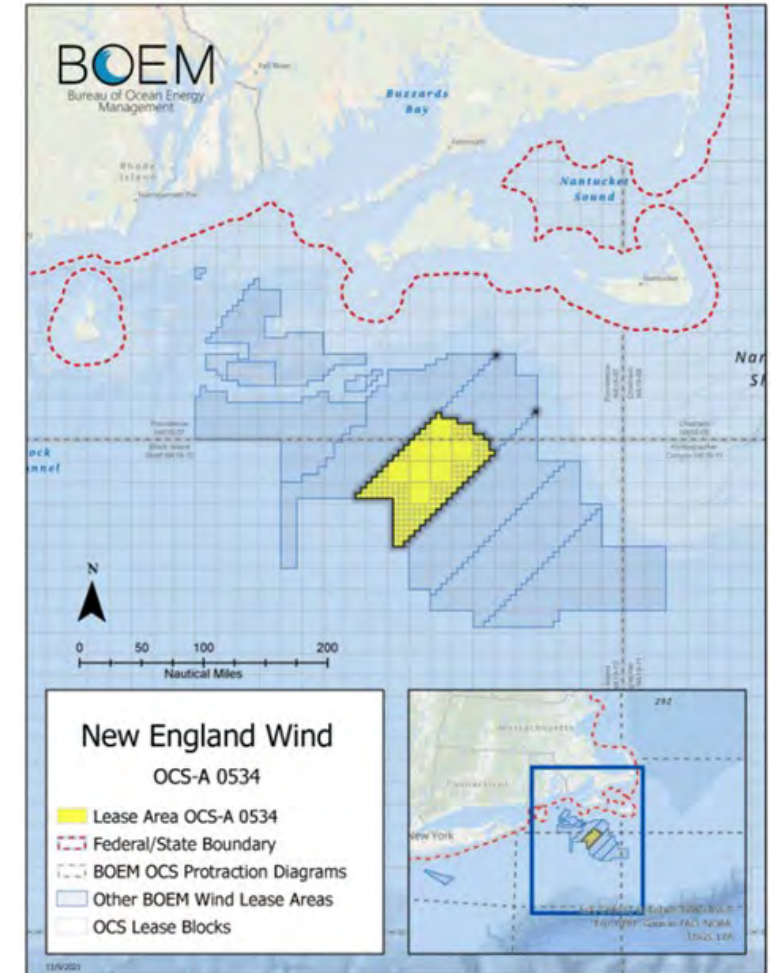


Internal Use

New England Wind

Federal Permitting

- Lead Federal Agency: BOEM (Bureau of Ocean Energy Management)
 - Construction and Operations Plan (COP) submitted July 2, 2020
 - Draft Environmental Impact Statement in preparation
 - Public comment period anticipated in Q4 2022 - Q1 2023
- Progress since last quarter:
 - Updated COP now available on [BOEM's website](#)
 - Submitted for federal consistency with RI CRMC in August and MA CZM in September
 - Submitted for US Army Corps of Engineers review in September
 - Submitted applications with the US Environmental Protection Agency in October



New England Wind

Massachusetts Permitting

- New England Wind 1 Connector
 - Scope of the review: Park City Wind's offshore export cable proposed in state waters and onshore infrastructure proposed in Barnstable
 - MA Environmental Policy Act (MEPA) certificate obtained Q1 2022
 - Permitting progressing at the state, regional, and local levels
 - Energy Facilities Siting Board review ongoing (petition filed May 28, 2020 - Docket #EFSB 20-01)
- New England Wind 2 Connector
 - Scope of review: Commonwealth Wind's offshore export cable proposed in state waters and onshore infrastructure proposed in Barnstable
 - Massachusetts review started, with notice in the *Environmental Monitor* October 7, 2022 by Massachusetts Environmental Policy Act (MEPA)



New England Wind

Park City Wind Environmental and Fisheries Research

- UConn Marine Sciences: Fisheries research conducted as part of the Connecticut Initiative on Environmental Research of Offshore Wind
 - Status: Contract Execution expected Q4 2022
- Mystic Aquarium: Protected marine species research
 - Status: Contract Execution expected Q4 2022



Acoustic Telemetry Study for Highly Migratory Species

- Partnership with the New England Aquarium, offshore wind developers, and recreational fishermen to document high migratory species presence across the MA and RI/MA Wind Energy Areas
 - Status: Survey active



Channeled Whelk Study

- Partnership with SMAST to support a baseline study focused on the age of maturity and fecundity of channeled whelks in various sample locations in Massachusetts waters
 - Status: on-going



New England Wind

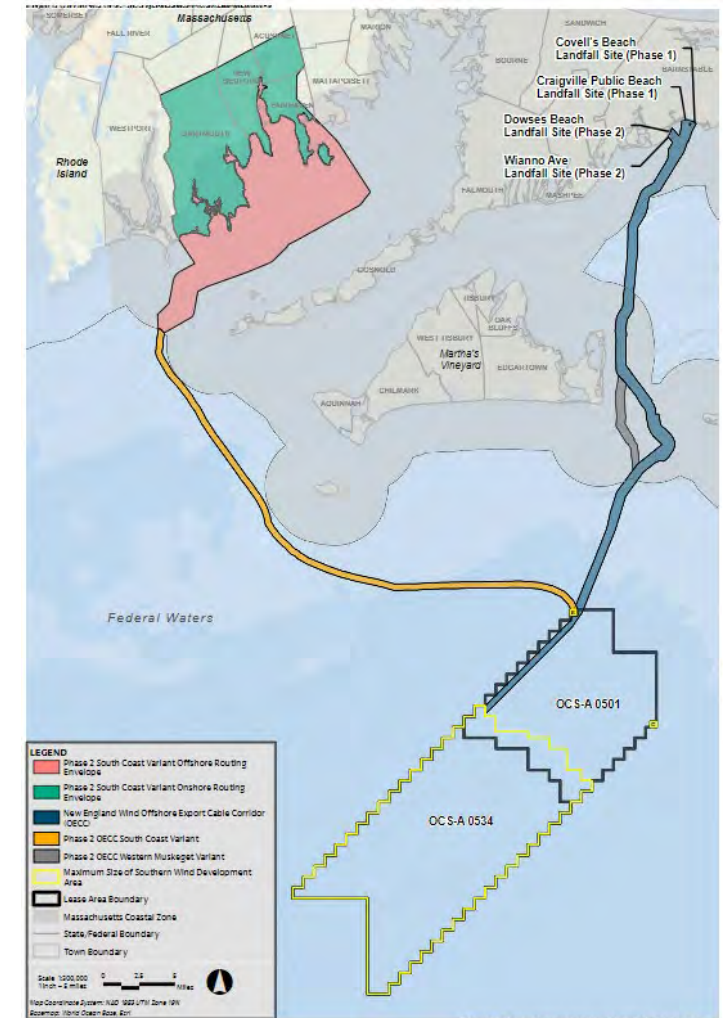
Survey Update

Fisheries

- Bottom Trawl – On Hold - Permitting
- Drop Camera - Spring Season completed May 2022
- Highly Migratory Species Acoustic Monitoring – Active through March 2023

G&G

- 534 lease area
 - Geotechnical surveys conducted by M/V Regulus – Active through March 2023
 - 2 scout vessels: FV Mister Marco and FV Barbara Ann – Active through March 2023
 - Geophysical surveys (magnetometer)– Beginning March 2023
- Nearshore Barnstable, MA
 - Geotechnical survey by a jack-up barge for ~ 1 week – Beginning late-October
- State waters/ Buzzards Bay
 - Geophysical surveys of export cable route - Expected start in March 2023



Thank you

caela.howard@avangrid.com
617-999-3882
Fisheries Liaison





MAYFLOWER WIND

Project Update

Presented to

MA EEA Fisheries Working Group on Offshore Wind Energy

Presented by

Erin Healy, Marine Science Permitting Manager, Mayflower Wind

October 14, 2022

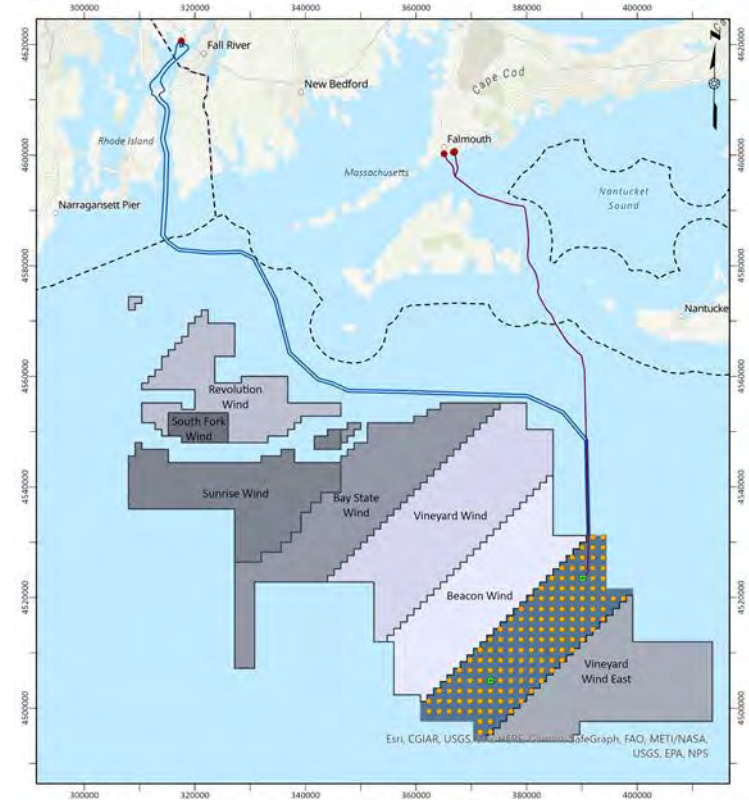
Mayflower Wind Project Overview

Points of Interconnection

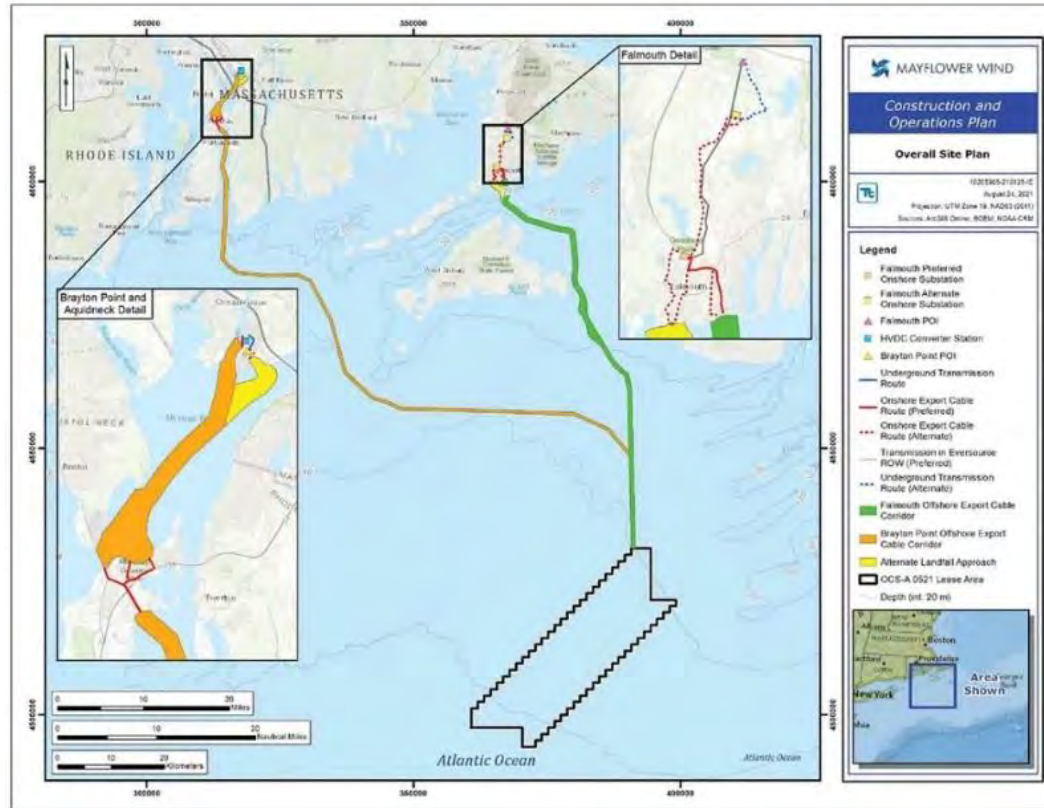
- Falmouth, MA
- Brayton Point, Somerset MA

Lease OCS-A 0521

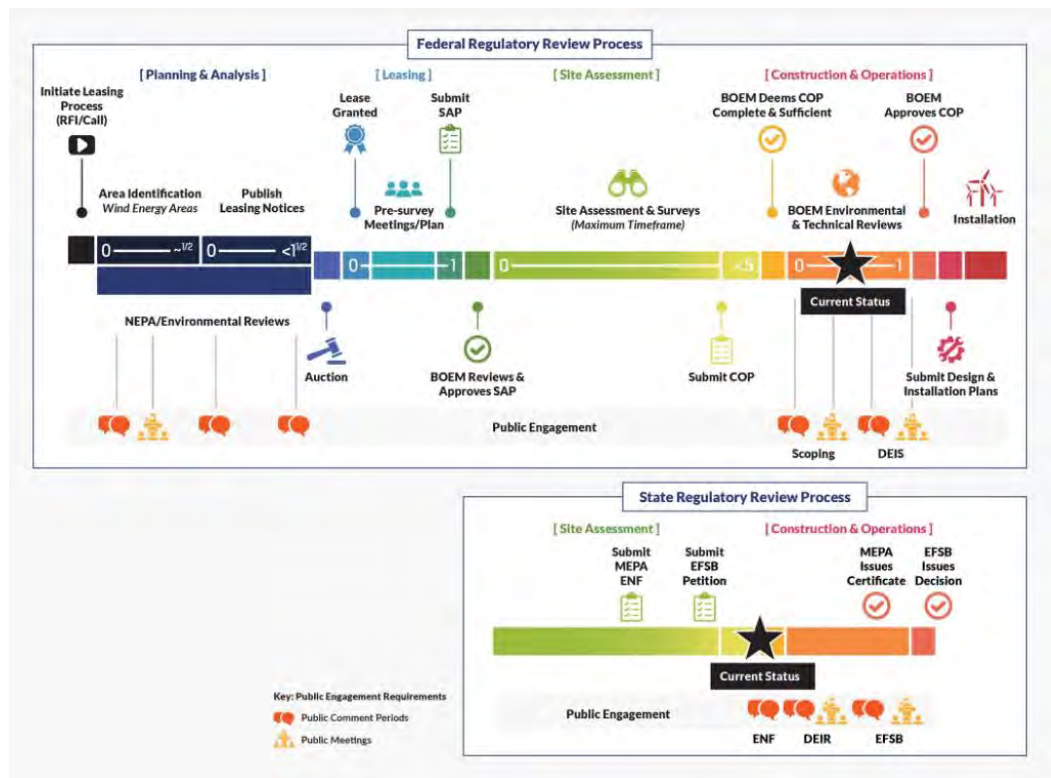
- 127,388 acres
- Up to 149 positions with up to 147 wind turbine generators (WTG)/ and 5 offshore substation platform (OSP) positions within the lease area
- 1nm x 1nm spacing



Mayflower Wind Project Overview

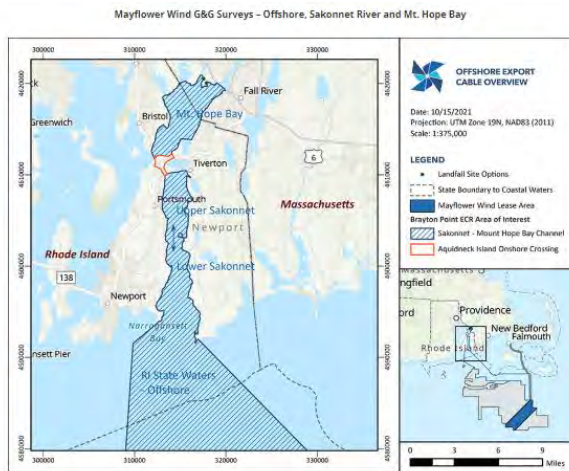


Mayflower Wind Project Progress



Ongoing Geotechnical Sampling

mayflowerwind.com > Our Commitment > Mariners



Mayflower Wind G&G Surveys - Vessel Operating Schedule

	October 9-15	October 16-22	October 23-29
Mt. Hope Bay	N/A	N/A	N/A
Upper Sakonnet	N/A	N/A	N/A
Lower Sakonnet	N/A	N/A	N/A
Offshore - RI State Waters	N/A	N/A	N/A
Offshore - Federal Waters	N/A	N/A	N/A
Mayflower Wind Lease Area	Fugro Explorer	Fugro Explorer	Fugro Explorer



Deep Water | Vessel: Fugro Explorer

Water Depths >>12m

LOA: 261'

Call Sign: 3FEV9

Phone: 713-489-3204

New Mayflower Wind Informational Materials

mayflowerwind.com, scroll down, click on 'Experience Mayflower Wind'



New Mayflower Wind Informational Materials

3D Offshore Model

NEWS

Take a virtual tour: Mayflower Wind's 3D model offers a glimpse at offshore wind project



Kathryn Gallerani
Standard-Times

Published 4:00 a.m. ET July 14, 2022

[View Comments](#)



NEW BEDFORD — You're the captain of a 45-foot fishing boat, navigating your way through a sea of wind turbines, in the rain, focused on avoiding possible danger ahead.

In these days of virtual reality, with [Mayflower Wind's](#) new 3D Offshore Model, it's possible to envision such a scenario from land.

The 3D model that made its debut with Community Liaison Officer Dugan Becker and Fisheries Liaison Officer Joel Southall during July port hours in New Bedford offers a realistic visual simulation of [Mayflower Wind's offshore lease area](#).

Users will be able to virtually navigate the offshore wind farm from a range of vessel types and in different weather, sea and lighting conditions.

Shown at July Joint Developer Port Hours,
available for demonstrations upon request!



This is a rendering of a first person view from a fishing vessel navigating Mayflower Wind's offshore lease area during a rainstorm using the company's 3D Offshore Model. *Courtesy/Mayflower Wind*

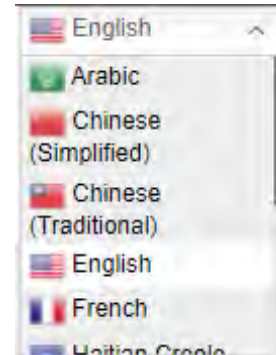
Thank You

Questions and Comments?

erin.healy@mayflowerwind.com
joel.southall@mayflowerwind.com
(617) 817-4682



PROJECT OVERVIEW ▾ ABOUT US OUR COMMITMENT ▾ NEWS & EVENTS ▾ WORK WITH US ▾ SIGN UP FOR UPDATES 🔍



Ørsted Offshore North America

Northeast Program Update



MA Fisheries Working Group
Meeting on Offshore Wind
October 2022

Ørsted Offshore North America portfolio

Awarded over 4,000 MW of offshore capacity on the East coast



In Operation

Block Island Wind Farm (BIWF): 30MW

Awarded

Revolution Wind (REV): 50/50 JV w/ Eversource, 704MW (400MW to RI, 304MW to CT)

South Fork Wind (SFW): 50/50 JV w/ Eversource, 132MW

Sunrise Wind (SRW): 50/50 JV w/ Eversource, approximately 924MW

Ocean Wind 1 (OCW1): 75/25 JV with PSEG, 1,100MW

Ocean Wind 2 (OCW2): 1,148MW

Skipjack Wind 1 (SJW1): 120MW

Skipjack Wind 2 (SJW2): 846MW

Orsted Northeast Program 50/50 JV with Eversource

South Fork Wind

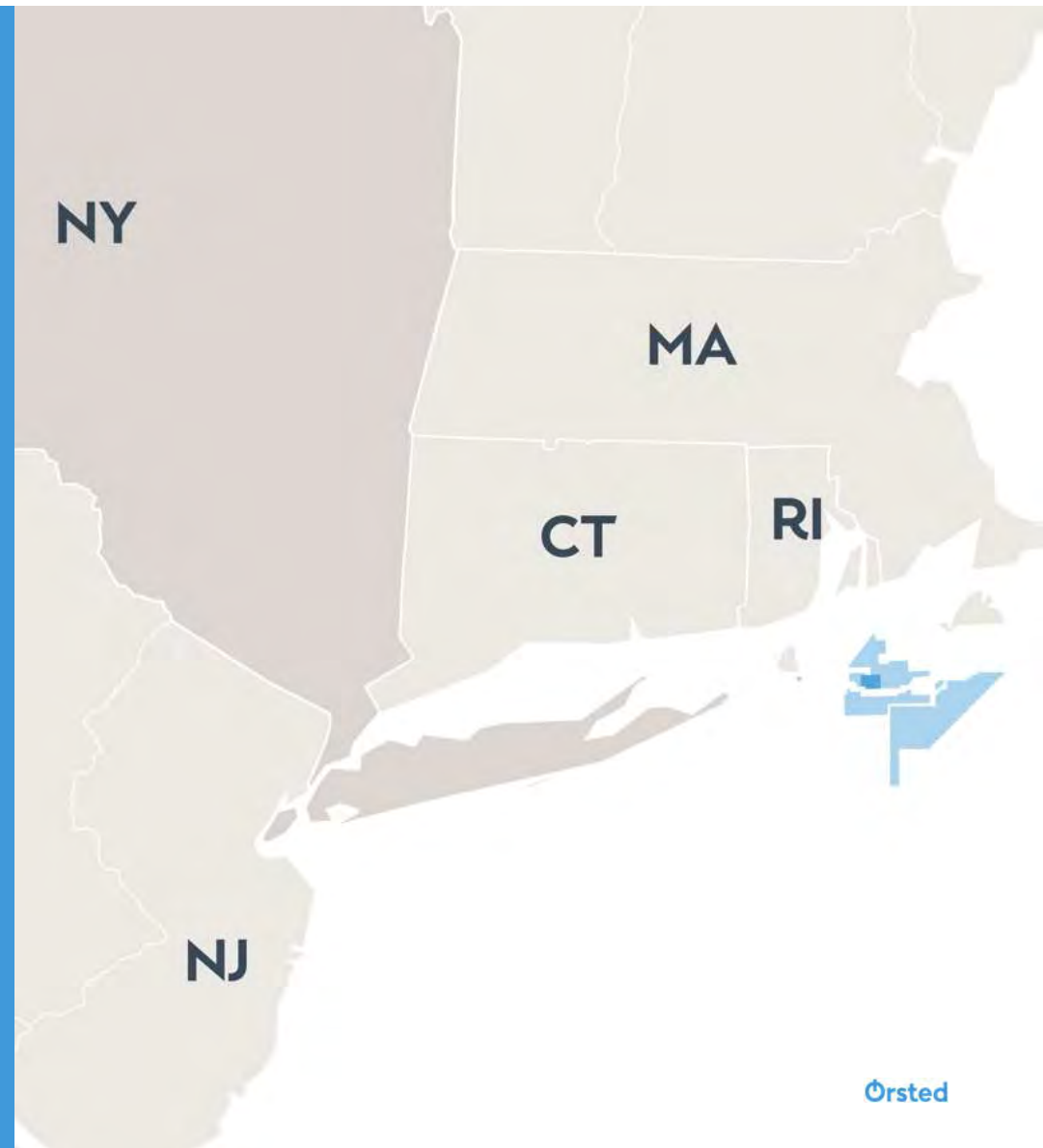
- Lease Area OCS-A 0517
- Deliver power to the East Hampton, NY
- NY Article VII approved March 2021
- COP Approval January 2022
- **Onshore: Construction Commenced**
- **Offshore: Pre-construction Fall 2022, Construction Spring 2023**

Revolution Wind

- Lease Area OCS-A 0486
- Interconnect to the existing Davisville Substation, RI
- RI EFSB Order Issued July 2022
- RI CRMC/RIDEM permit applications under review
- **DEIS September 2022, FEIS June 2023**

Sunrise Wind

- Lease Area OCS-A 0487
- Proposed interconnection at Holbrook Substation, NY
- NY Article VII Settlement meetings close to completed
- **DEIS December 2022, FEIS July 2023**



Northeast Program Update

FISHERIES SURVEYS

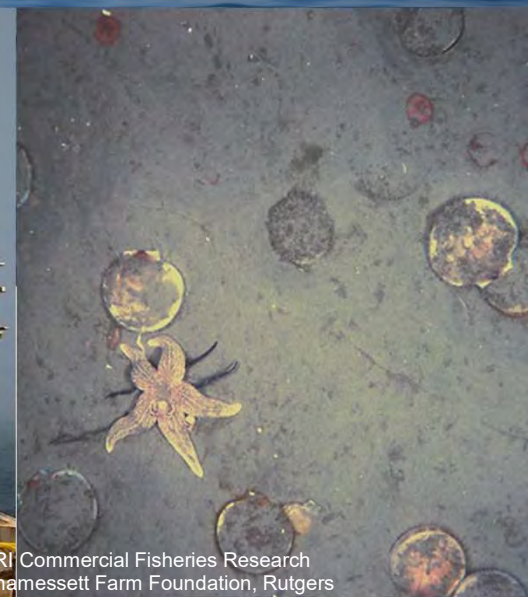
- **SFW (underway)**
 - Beam Trawl
 - Gillnet Survey
 - Fish Pot Survey
 - Ventless Trap Survey
 - Cod Spawning Monitoring (PAM)
- **REV/SRW (delayed by permitting)**
 - Bottom Trawl Survey
- **REV (delayed by permitting)**
 - Ventless Trap Survey
 - Cable Route Ventless Trap Survey (Winter 2022)
- **SRW (underway)**
 - HABCAM survey (first survey completed in Aug.)

ACOUSTIC TELEMETRY SURVEYS

- Highly Migratory Species (SFW/REV/SRW- 32 receivers deployed)
- Export Cable (SFW-underway/SRW-array deployed and ~80 sharks tagged to date)

BENTHIC SURVEYS (planned)

- Soft and Hard Bottom Habitats (SFW/REV)
- 4 • Soft Bottom Habitats (SRW)



*Photos courtesy of RI Commercial Fisheries Research Foundation and Coonamessett Farm Foundation, Rutgers

SFW Seabed Preparation Activities

Based on multiple years of site investigation and engineering design, our seabed preparation activities are designed to support a safe, high quality, and efficient construction campaign.

Seabed preparation activities include:

- Displacing boulders from designed foundation locations and cable routes
- Protecting existing cables that cross our designed export cable route

Displacing Boulders from Designed Routes Using a Boulder Pick

- For areas of low boulder density, a boulder pick will be used to displace specific boulders from designed cable routes and foundation locations.
- Activity began in late September and is expected to continue until November.

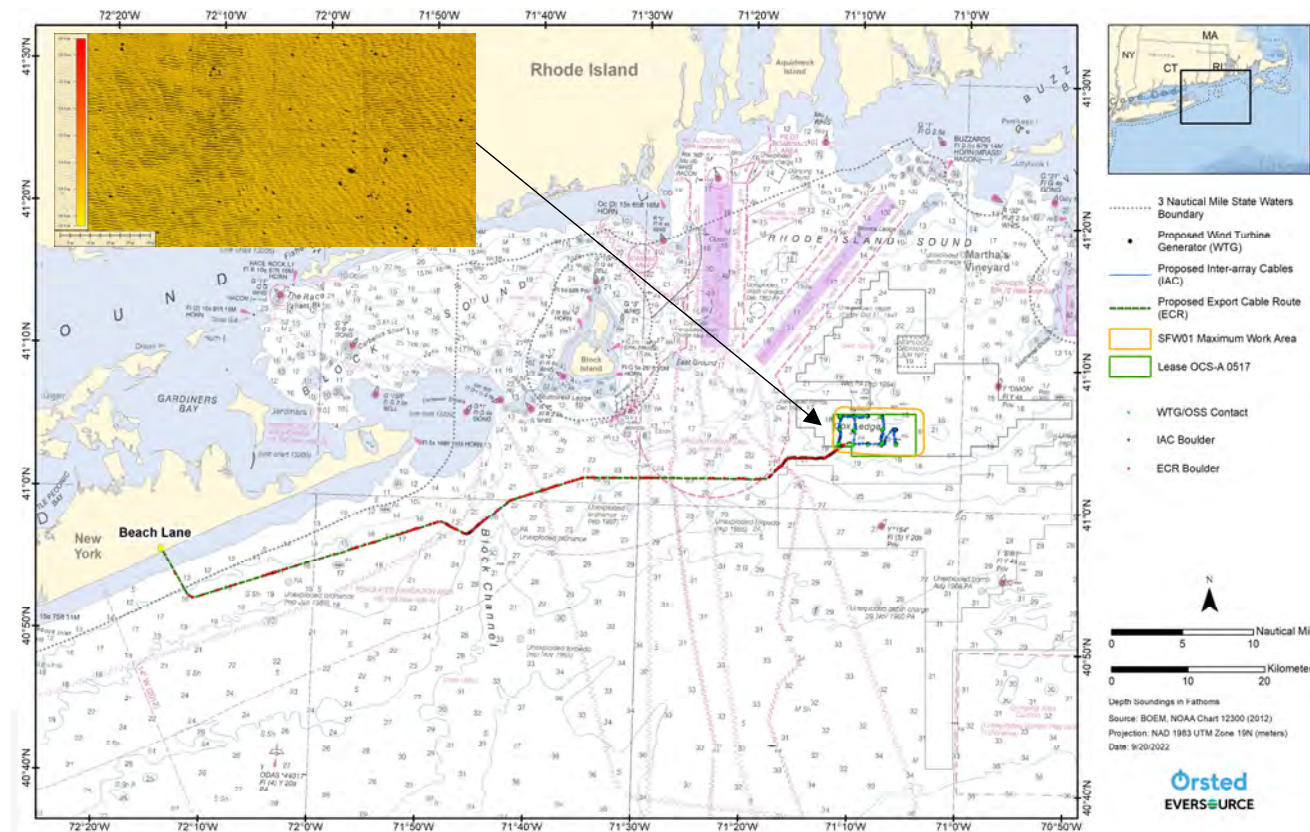
Vessel and Equipment



Shelia Bordelon
Flag: US
IMO: 9670638
FLO: Max Hall



Boulder Pick:
The boulder pick is used in conjunction with an ROV with light and cameras. Boulders will be moved a short distance outside of the cable corridor.



South Fork
Wind

Powered by
Ørsted &
Eversource

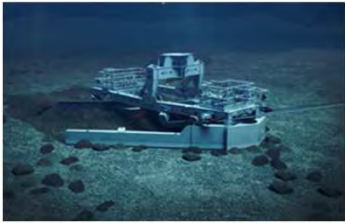
Displacing Boulders from Designed Routes Using a Boulder Plough

- For areas of high boulder density, a boulder plough will be used to displace boulders from designed cable routes and foundation locations.
- Earliest start date anticipated late November, duration is approximately 1 month.

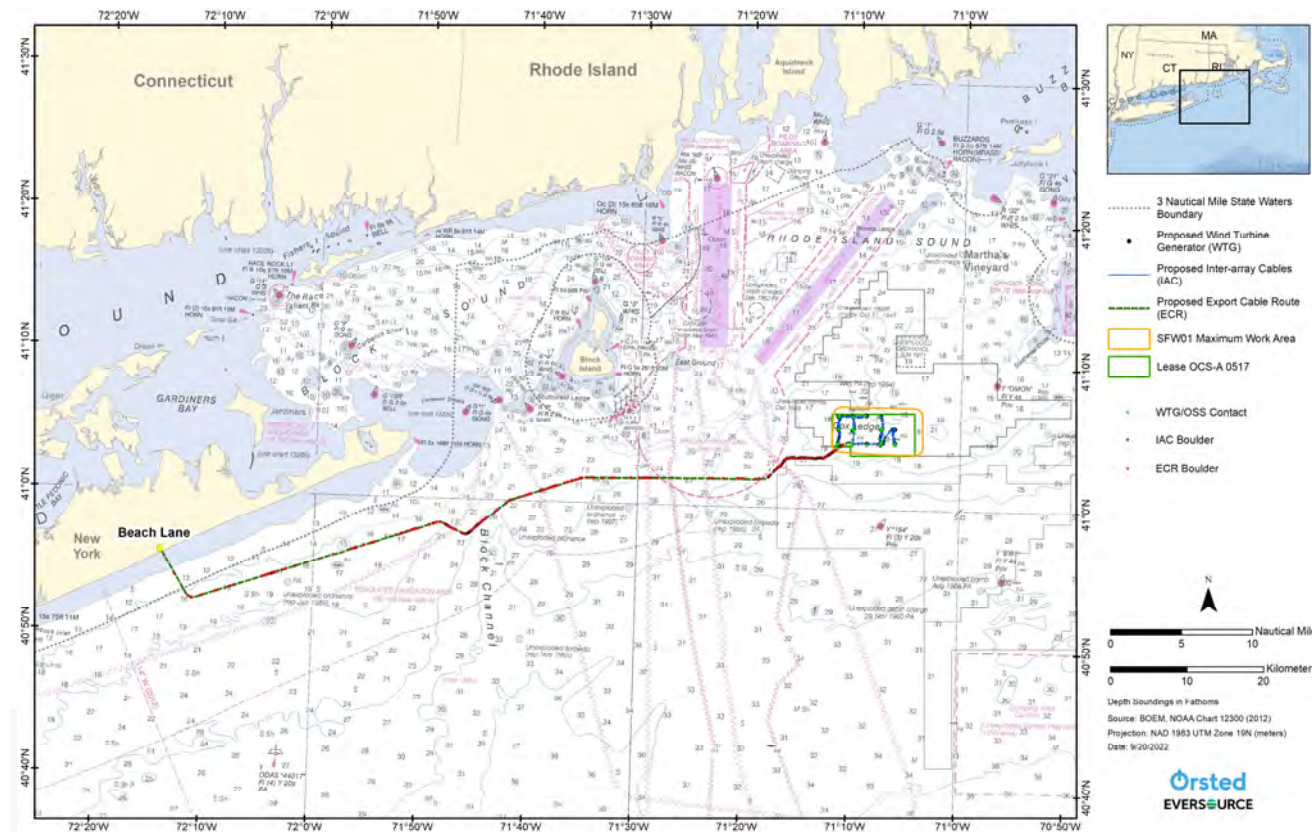
Vessel and Equipment



Laney Chouest
Flag: US
IMO: 967063
FLO: TDB



Boulder Plough:
The plough will be towed on a wire ~ 300 yards behind the vessel and clear a path ~50 ft wide. The vessel will move less than ~0.25 kts when the plough is deployed. Key area of coordination: fishing gear in the path on the plough risks being damaged



South Fork
Wind

Powered by
Ørsted &
Eversource

Ørsted
EVERSOURCE

Protecting Existing Cables that Cross our Design Export Cable Route

- For six existing cables that cross our design export cable protect existing cables with matting.
- Activity completed in late September/early October.
- Mattress locations available for P-Sea Windplot and TimeZero

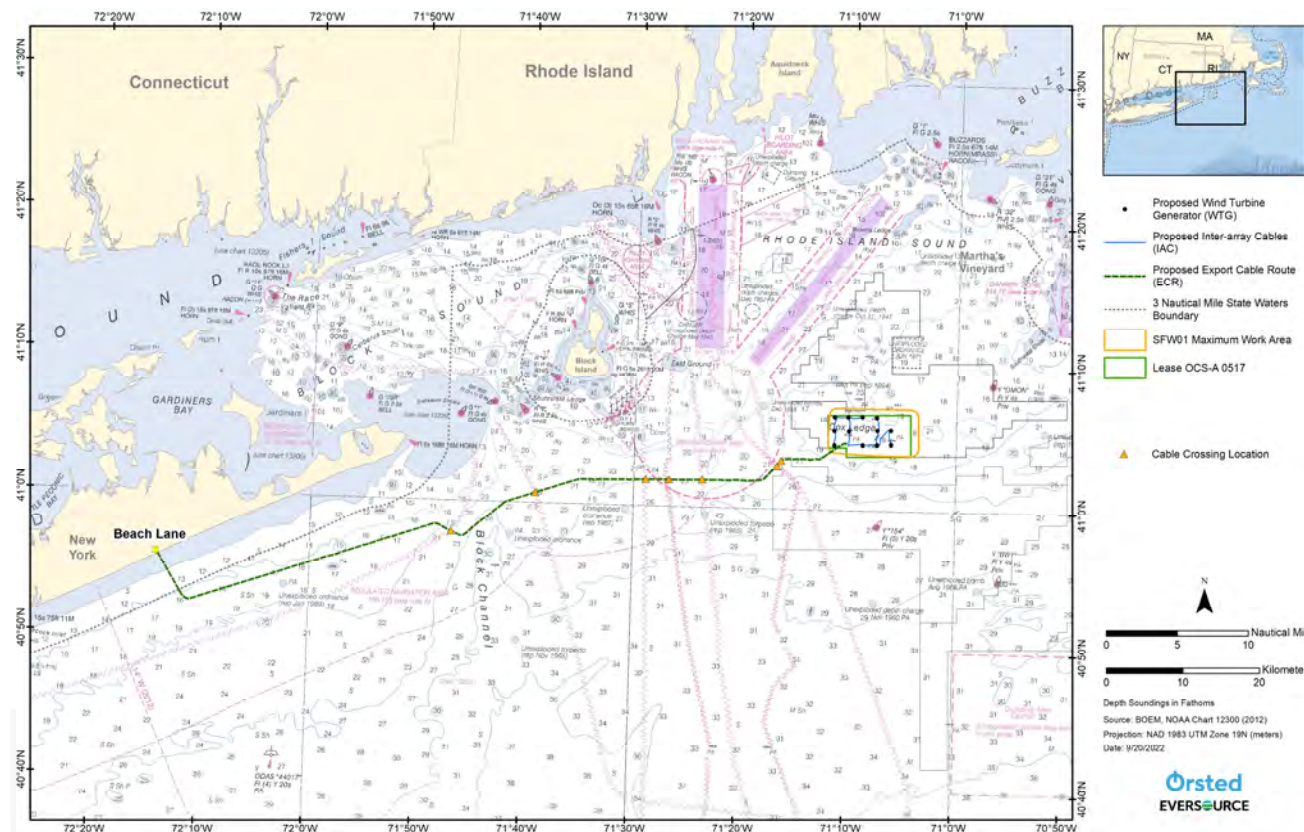
Vessel and Equipment



Shelia Bordelon
Flag: US
IMO: 9670638
FLO: Max Hall



Cable protection mattress with tapered edges to support fishing.
Dimensions: ~ 20' x 10' x 1'



South Fork
Wind

Powered by
Ørsted &
Eversource

Seabed Prep – Mariner Engagement

- Fisheries Liaison Officer supporting major vessels, and potentially a scout vessel
- Twice-daily radio broadcast to update vessel activities and establish a Working Channel throughout the campaign
- Mariners Briefings: Mondays and Thursdays with 3 and 7-day outlooks
 - Updated work areas based on the 14000 Loran lines
- Thumb drives with pre-lay mattress locations for PCWinplot and TimeZero will be available
- Existing and new locations for boulders moved with the pick will be posted to our website on a regular basis
- Start and end points for the plough lines when the work is completed
- Marine Affairs staff will be available in-person or by phone to provide information and answer questions



<https://us.orsted.com/wind-projects/mariners>

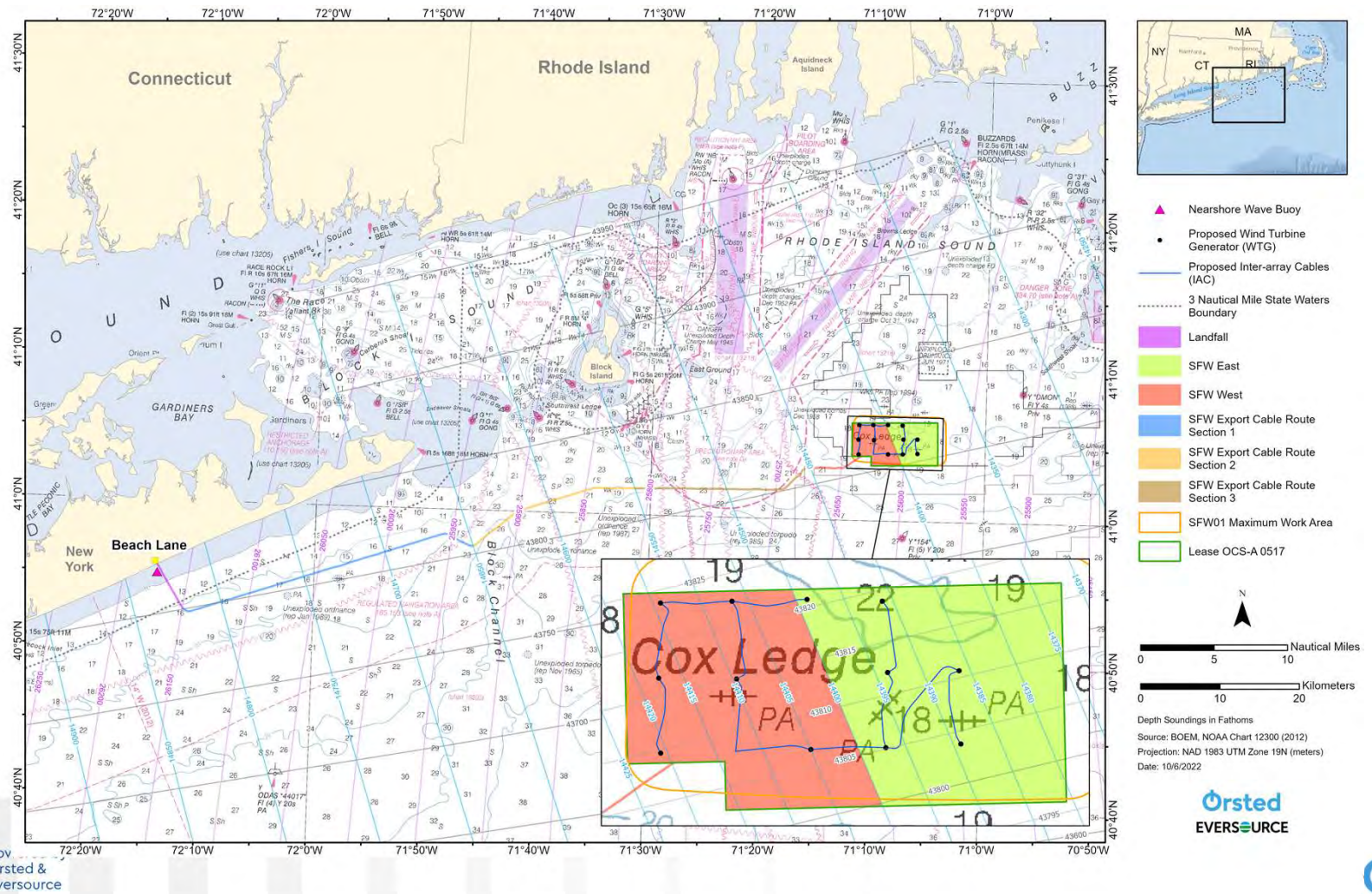


South Fork
Wind

Powered by
Ørsted &
Eversource

Ørsted

Work Areas



South Fork
Wind

Pov
Orsted &
Eversource

Orsted

Gear Loss Claims

- Our gear loss claim process is in place for all seabed prep work
- To file a gear claim you will need:
 - The date the gear was set and the damage was discovered
 - The location of your gear (lat/long or TDs)
 - A list of the gear that was lost or damaged
 - An estimate of the repair or replacement cost
- Fishermen who suffer gear loss can also file a claim for economic loss
- To claim economic loss, you will need:
 - VTRs for the 3 trips immediately before the trip the loss occurred
 - The VTR for the trip the loss occurred
 - The VTR for the trip immediately after the loss was discovered
 - The amount of fishing time lost because of the gear damage

If you suffer gear damage or loss because of this work, please contact Chris Sarro or Rodney Avila as soon as possible



Christopher Sarro
Marine Affairs
Specialist

- Phone: 857-276-1332
- Email: CHSAR@Orsted.com



Rodney Avila
Marine Affairs
Specialist

- Phone: 857-332-4479
- Email: RODAV@Orsted.com

Questions?

Ed LeBlanc

Marine Affairs Manager

EDWLE@orsted.com

(987) 447-2737

Ross Pearsall

Fisheries Relations Manager

ROSPE@orsted.com

(857) 278-2442

John Mansolillo

NE Marine Affairs Manager

JOMAN@orsted.com

(401) 145-5467

Rodney Avila

Corporate Fisheries Liaison

RODAV@orsted.com

(857) 332-4479

Chris Sarro

MA & RI

CHSAR@orsted.com

(857) 276-1332

Julia Prince

NY & CT

JULPR@orsted.com

(857) 348-3263

Kyle Cassidy

Marine Scientist

KYCAS@orsted.com

(401) 280-0752

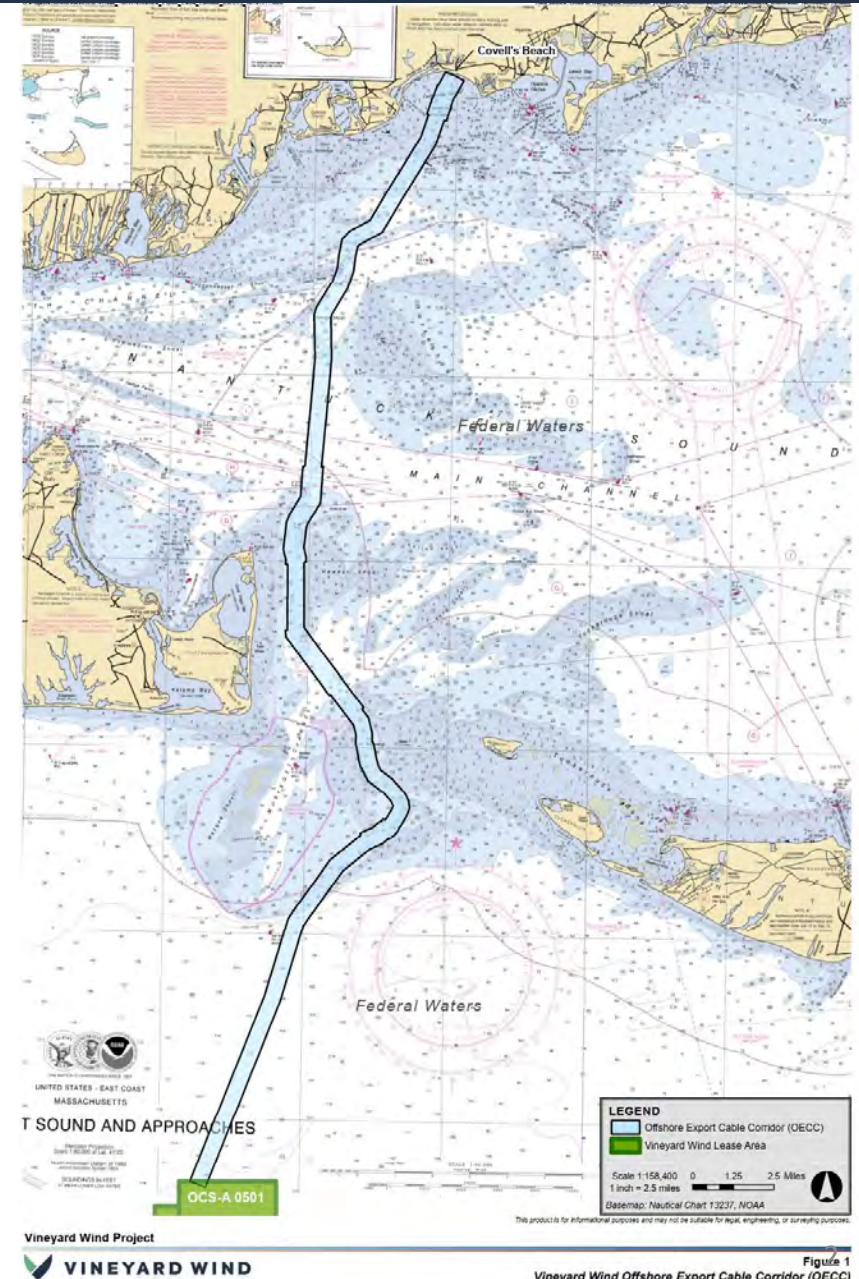


MA Fisheries Working Group

October 14, 2022



- Cable installation in Nantucket Sound scheduled to begin November 2022
- Offshore construction scheduled for 2023
- Mariner Updates issued through usual channels
- Sign up for email updates on our website:
<https://www.vineyardwind.com/fisheries/#sign-up>
- Or text vwfisheries to 844-621-2170 to sign up for text message updates



Vineyard Northeast - 522



- Geophysical and Geotechnical vessels
Onboard Fisheries Liaisons



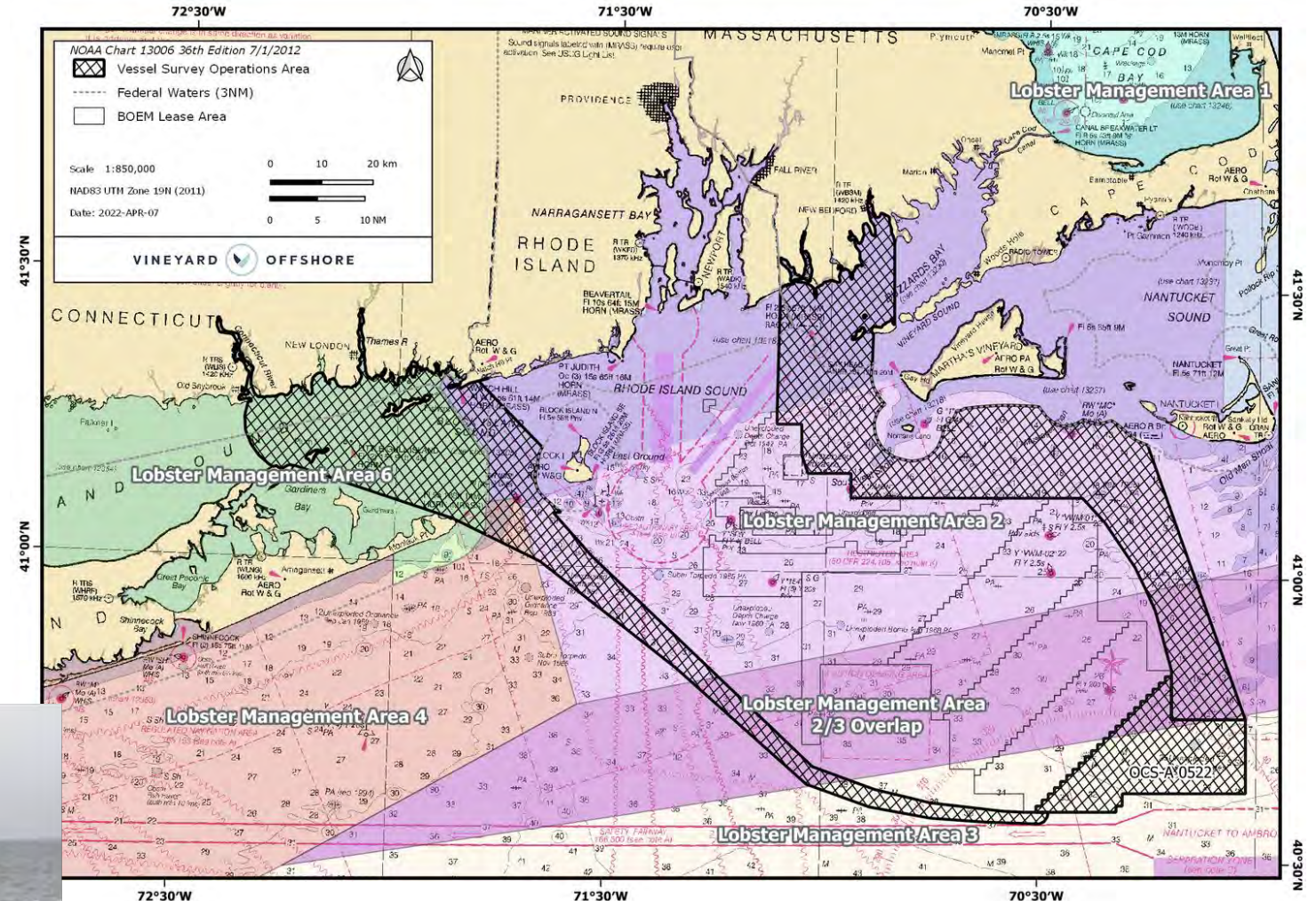
- Scout Vessels
FV Encourager



FV Jeanette T



G&G Survey Update





Crista Bank

cbank@vineyardwind.com

508-525-0421

Travis Lowery



tlowery@vineyardoffshore.com

508-728-4529

