

**MassDOT Highway Construction Contract:
127956
Fitchburg – Twin Cities Rail Trail Construction
(TCRT-Phase II)**

November 20, 2024

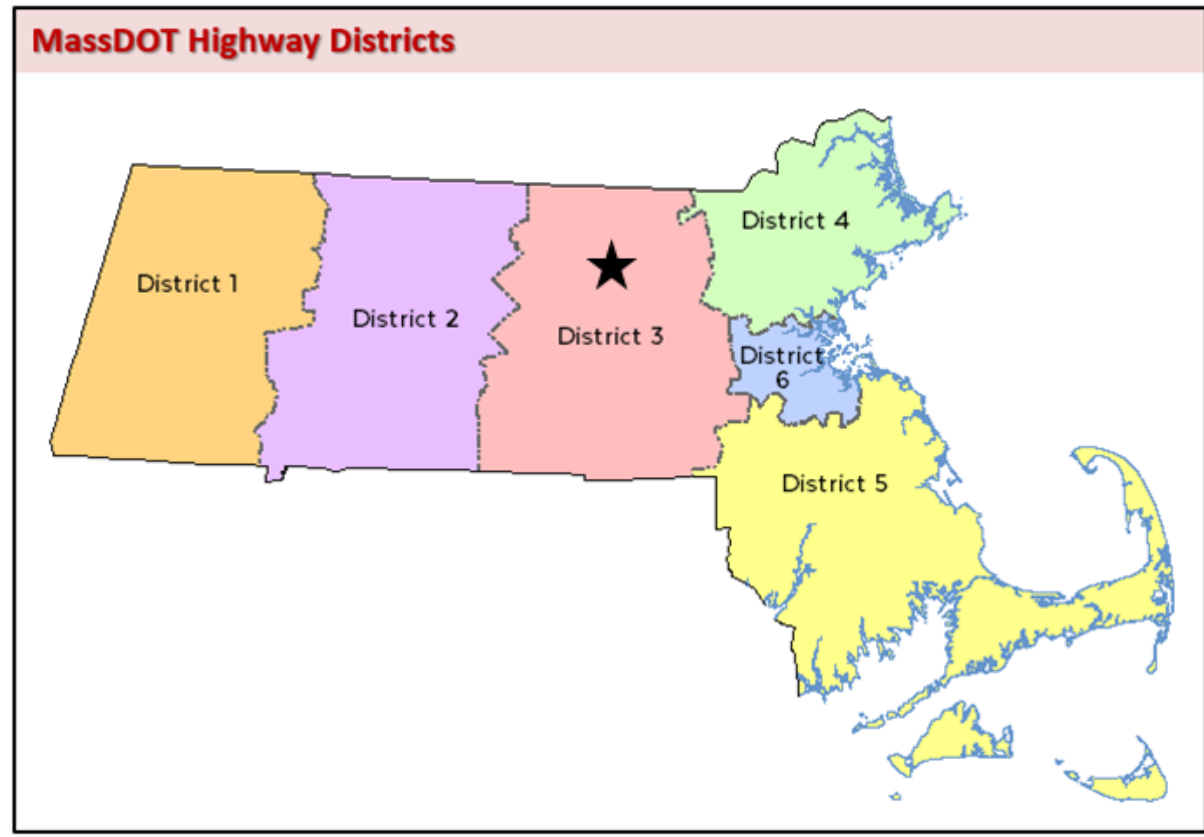
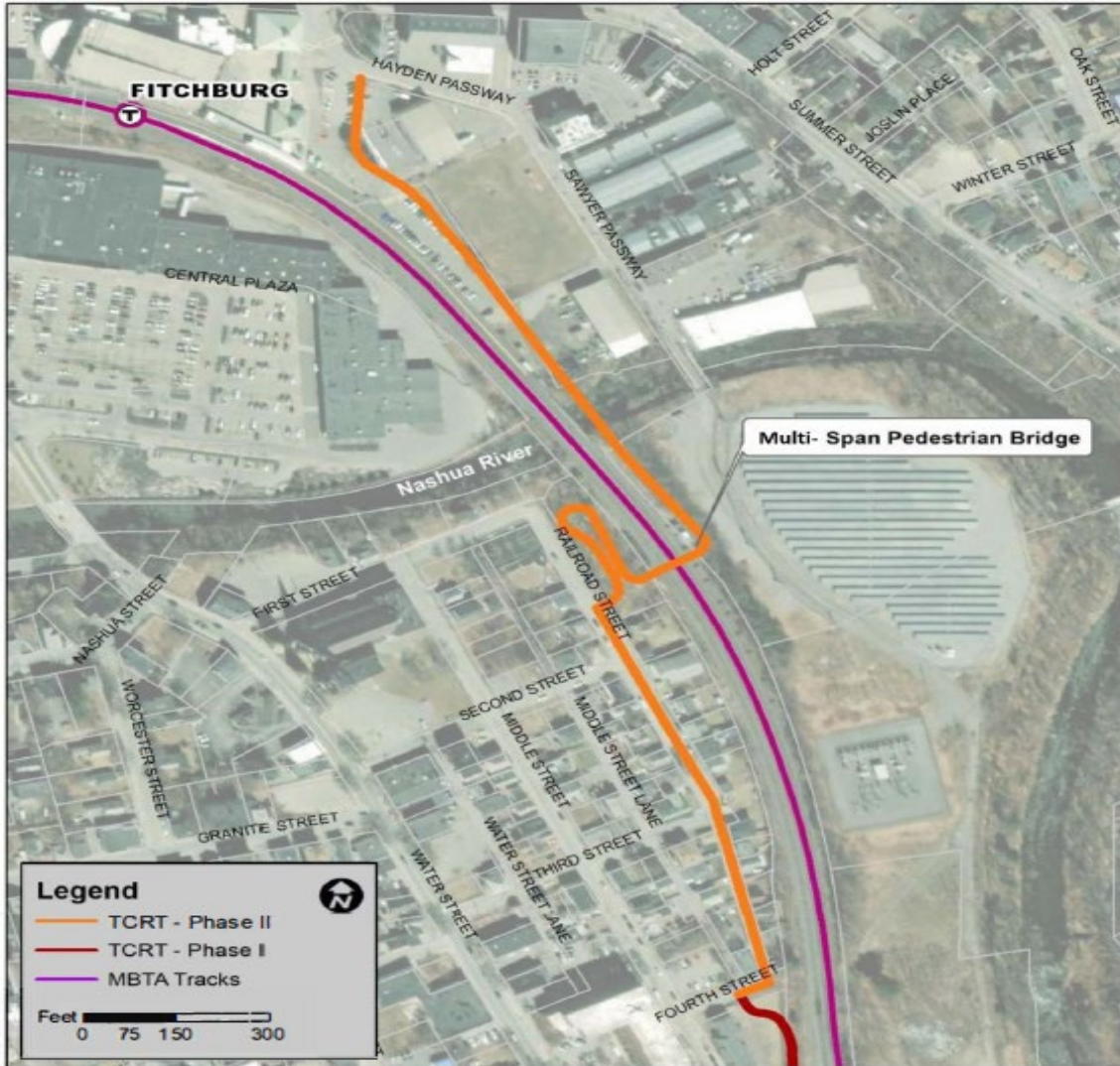


Table of Contents

- 3. Project Location
- 4. Overview
- 7. Procurement & Budget
- 8. Questions from CPC
- 10. Request of the Board

Project Location

Twin Cities Rail Trail Construction (Phase 2) in Fitchburg



Overview

Beyond Mobility



- This regional trail will connect areas of cultural, economic, social, and natural significance along the multi community corridor and provide a non-motorized transportation and recreational alternative for people of all ages and abilities.
- Project meets Beyond Mobility priorities for Safety, Supporting Clean Transportation and Destination Connectivity.

Overview

Scope of Services

- The Phase 2 connection begins at the terminus of newly constructed Phase 1 at 4th Street and includes an on-road section along Railroad Street to approximately 1st Street, where the trail will climb a newly retained earth structure leading to a new multi-span bridge over the MBTA Commuter Line railroad tracks, continuing across property owned by Unitil, across the North Nashua River, and over private property to the MART/Montachusett Regional Transit Authority Intermodal Transportation Center, approximately 2,243 feet or 0.425 miles.
- The new multi-span bridge will feature a prefabricated steel truss and steel plate girder superstructure with a reinforced concrete deck, safety curb, and steel railing with protective screen atop cast-in-place concrete substructure elements. Similar in type to Phase 1 (see slide)
- Other related work includes clearing, grading, pavement and concrete sidewalk, access ramps, installation of signage, pavement markings, plantings, trail lighting and bike path amenities.



Twin Cities Rail Trail Phase I in Leominster

Overview

Purpose & Need/Construction Management Approach

Purpose & Need

- Twin Cities Rail Trail Phase 2 provides safer and improved access for bicycle users and pedestrians to MART/Montachusett Regional Transit Authority Intermodal Transportation Center in downtown Fitchburg.
- Completes the connection between the central business district for Leominster and Fitchburg.

Construction Management Approach

- Work will be done using one 8-hour shift per day, 5 days a week, between the hours of 7:00 am and 3:30 pm. Night work is anticipated over the railroad tracks and coordinated with District 3 Office.
- Construction will take approximately three (3) years to complete.



Twin Cities Rail Trail Phase I in Leominster

Procurement and Budget

- Project Advertised August 31, 2024
- Engineer's Estimate was \$23,096,658.00
- Bid Opening held October 1, 2024
- Five (5) Bids were received:

E T & L Corp	\$ 22,989,530.00
MIG Corporation	\$ 23,855,644.00
MAS Building & Bridge Inc	\$ 25,149,541.50
A A WILL Corp	\$ 25,423,735.00
J F WHITE Contracting CO	\$ 27,741,974.00

Line Item	Budget
Bid Amount	\$22,989,530.00
Contingencies (10%)	\$2,298,953.00
Construction Engineering (5%)	\$ 1,149,476.00
Traffic Police	\$400,000.00
Railroad Flaggers, Engineering Support & Specialty Services	\$740,000.00
Trainees	<u>\$4,000.00</u>
Total	\$27,581,959.00

- Federal Aid Funding: (CMAQ) Congestion Mitigation Air Quality

Questions from Capital Programs Committee

Directors asked questions during the meeting on November 13 (Twin Cities Rail Trail), as follows:

- **Before we initiate these shared-use path and rail trail projects, do we project to see what type of mode shift it will deliver?**

Twin Cities Rail Trail was initiated in 2015 by the Cities of Fitchburg and Leominster in partnership with Executive Office of Energy and Environmental Affairs (EOEEA) following the Statewide Bike Plan.

It was anticipated that some mode shift would facilitate connections between the two urban centers and the MART once completed.

- **This is steel prefabricated truss for the bridge. Why is the project duration taking 3 years?**

The bridge type selection matches the type constructed as part of phase I; however, complexity with constructability over live MBTA Commuter Rail adjacent to the MART and environmental permitting restrictions proximate to the North Nashua River will extend construction duration work windows.

Request of the MassDOT Board

Staff request that the MassDOT Board of Directors authorize the Secretary of the Massachusetts Department of Transportation, or her designee, to award and execute MassDOT Construction Contract 127956 – Fitchburg- Twin Cities Rail Trail Construction (Phase II), with ET&L Corp, in the amount of \$22,989,530.00.

Thank You

