

# 2021-2022 Flagship Days School Registration

Register one at a time or for all three. Schools can participate on the official day, or a day of their choosing during the month.

<input type="checkbox"/>	<b>iWalk</b> (International Walk and Roll to School Day)	Wednesday, October 6, 2021
<input type="checkbox"/>	<b>Winter Walk to School Day</b>	Wednesday, February 2, 2022
<input type="checkbox"/>	<b>Massachusetts Walk, Bike, and Roll to School Day</b>	Wednesday, May 4, 2022

You can also register online at:  
<https://gisdev.massdot.state.ma.us/applications/SRTS/>

School(s):			
Community (City or Town):			
Contact Name:			
Email:			
Phone:			
Event Date(s):		Estimated # of Event Participants:	
Average # of Daily Walkers (include any walking school buses):		Average # of Daily Bikers (include any bike trains):	
Shipping Address, City, State, Zip			
Residential? <input type="checkbox"/>			

Fax or email completed forms to:  
Fax: 857.368.0656  
Email: Diane.Hanson@aecom.com  
For more information, call 857.383.3808

A Program of **massDOT**  
Massachusetts Department of Transportation



# MASSACHUSETTS Safe Routes to School

MASS.GOV/SAFE-ROUTES-TO-SCHOOL

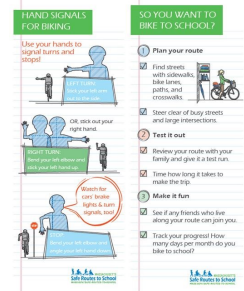
## ✓ Bookmarks-Walk

- Front: "Safe Walking Tips"
- Back: "How do you walk safely to school?"
- Also available in Spanish



## ✓ Bookmarks-Bike Hand Signals

- Front: "Hand Signals for Biking"
- Back: "So you want to bike to school?"



## ✓ Bookmarks-Arrival & Dismissal Tips

- Front: "Start the school day with confidence"-Safety tips during arrival and dismissal
- Back: "Brighten your journey to and from school"



## ✓ Stickers

- Available for walking or biking
- Various styles, depending on availability



## SRTS Encouragement Items

Item	Amount Requested
Bookmarks-Walk-English-language	
Bookmarks-Walk-Spanish-language	
Bookmarks- Hand Signals for Biking	
Bookmarks-Arrival & Dismissal Tips	
Stickers - Walk	
Stickers - Bike	

- Orders must be placed by **7 business days in advance of your event**
- SRTS will attempt to fulfill all reasonable partner school material requests. Limits may be placed on items in order to distribute supplies evenly across our partner schools.