

2022-2023 Flagship Days School Registration

Register one at a time or for all three. Schools can participate on the official day, or a day of their choosing during the month.

<input type="checkbox"/>	iWalk (International Walk and Roll to School Day)	Wednesday, October 12, 2022
<input type="checkbox"/>	Winter Walk to School Day	Wednesday, February 1, 2023
<input type="checkbox"/>	Massachusetts Walk, Bike, and Roll to School Day	Wednesday, May 3, 2023

You can also register online at:
<https://gisdev.massdot.state.ma.us/applications/SRTS/>

School(s):			
Community (City or Town):			
Contact Name:			
Email:			
Phone:			
Event Date(s):		Estimated # of Event Participants:	
Average # of Daily Walkers (include any walking school buses):		Average # of Daily Bikers (include any bike trains):	
Shipping Address, City, State, Zip			
Residential? <input type="checkbox"/>			

Fax or email completed forms to:
Fax: 857.368.0656
Email: Rachel.ODonnell2@aecom.com
For more information, call 857.383.3818

A Program of **massDOT**
Massachusetts Department of Transportation



MASSACHUSETTS Safe Routes to School

MASS.GOV/SAFE-ROUTES-TO-SCHOOL

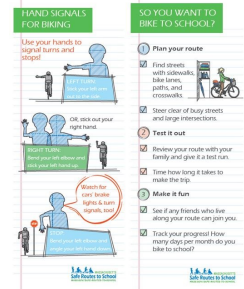
✓ Bookmarks-Walk

- Front: "Safe Walking Tips"
- Back: "How do you walk safely to school?"
- Also available in Spanish



✓ Bookmarks-Bike Hand Signals

- Front: "Hand Signals for Biking"
- Back: "So you want to bike to school?"



✓ Bookmarks-Arrival & Dismissal Tips

- Front: "Start the school day with confidence"-Safety tips during arrival and dismissal
- Back: "Brighten your journey to and from school"



✓ Stickers

- Available for walking or biking
- Various styles, depending on availability



SRTS Encouragement Items

Item	Amount Requested
Bookmarks-Walk-English-language	
Bookmarks-Walk-Spanish-language	
Bookmarks- Hand Signals for Biking	
Bookmarks-Arrival & Dismissal Tips	
Stickers – Walk	
Stickers – Bike	

- Orders must be placed by **7 business days in advance of your event**
- SRTS will attempt to fulfill all reasonable partner school material requests. Limits may be placed on items in order to distribute supplies evenly across our partner schools.