

Commonwealth of Massachusetts, Division of Fisheries and Wildlife
Forest Products Sale Contract and Prospectus

Sale Name: Muddy Brook Road – Patrill Hollow Tract- Muddy Brook Wildlife Management Area

The following forest products are offered for sale by the Massachusetts Division of Fisheries & Wildlife (MassWildlife) on approximately 45 acres: 176 mbf sawtimber, 230 cords of hardwood firewood, and 2,667 tons of chipwood (chipwood is approximately ≥95% softwood and ≤5% hardwood). **Whole-tree harvesting is required** on all 45 acres to reduce fuel loads for subsequent prescribed burning. The Purchaser agrees to abide by the terms specified in this contract.

To Bid:

Prospective bidders shall supply sealed bids marked on the envelope: **Bid: CE-MB-TS2**

These bids shall be mailed or delivered to:

John Scanlon
Division of Fisheries and Wildlife
1 Rabbit Hill Road
Westborough, MA 01581

On or before Thursday, March 8, 2018 at 2:00 PM EST.

Showing:

Forest products will be shown by meeting MassWildlife Habitat Biologist **Benjamin Mazzei at 9:00 am on Friday, February 16, 2018 on Muddy Brook Road, Hardwick, MA (see attached map).**

Bid forms and contracts will be available at the showing. Prospective bidders **MUST** attend this scheduled showing OR make alternate arrangements with MassWildlife PRIOR TO the scheduled showing so that all bidders can be announced at the scheduled showing. **If you need to make alternate arrangements, contact MassWildlife Habitat Biologist Benjamin Mazzei at 413-768-9090.**

Designated trees: The trees are designated as follows:

In stands 1-2, trees marked with a red stripe shall be RETAINED, and all other trees 4" DBH or larger shall be cut.

The timber quality is **Poor to Good**. The size of the sale area is **45 acres**. Access is from Muddy Brook Road. **A limited amount of road improvements will be necessary on Muddy Brook Road, including provision, delivery, spreading and grading of processed gravel. Purchaser must also provide a 20' skidder bridge to be retained by MassWildlife.**

**Timber Volume Estimates of
Merchantable Trees in Board Feet**

**Volume Estimates of
Additional Wood Products**

	Stand 1	Stand 2					
Species	DBH Range 10-40" (Avg. 18)	DBH Range 10-18" (Avg. 10")	Totals		Product	Cords	Tons
White Pine	131,131	4,397	135,528		Softwood chipwood		2,320
Red Oak	8,122		8,122		Topwood chipwood		346
Black Oak	4,629	1,881	6,510		Hardwood Firewood	230	
White Oak	24,062	1,690	25,753				
Totals	167,944	7,968	175,9132		Totals	230	2,667

Volume estimates provided for comparison purposes only. Estimates are based on a limited number of prims plots in each stand. Softwood chipwood volume includes boles and topwood of non-timber softwood trees. Topwood chipwood volume includes tops of both softwood and hardwood timber trees. Purchaser is responsible for inspecting and determining wood products volume to their own satisfaction prior to bidding on this contract.

Additional Information

Tallied or estimated sawtimber volumes are International $\frac{1}{4}$ " Rule, FC80. Topwood chipwood estimated as 0.9 cords/MBF sawtimber and converted to tons using a multiplier of 2.2 tons/cord.

Only bids submitted on official bid forms will be accepted. This harvest allows but does not require a mechanized harvesting system. On-site chipping is allowed.

See Special Provisions for other equipment restrictions and required materials and services.

Unless otherwise noted in this contract, the merchantability standards for this sale are:

Sawlogs: Min. DBH 10" for softwood, 12" for hardwood, top diameter 8 inches, more than 50% sound, 2 clear faces.

Chip and fuel wood: Minimum DBH 6", top diameter 4", greater than 50% sound, no visible rot.

The Division of Fisheries and Wildlife reserves the right to reject any or all bids.

Particulars may be obtained from MassWildlife Habitat Biologist, **Benjamin Mazzei**, at **413-768-9090** or **ben.mazzei@state.ma.us**



MASSWILDLIFE

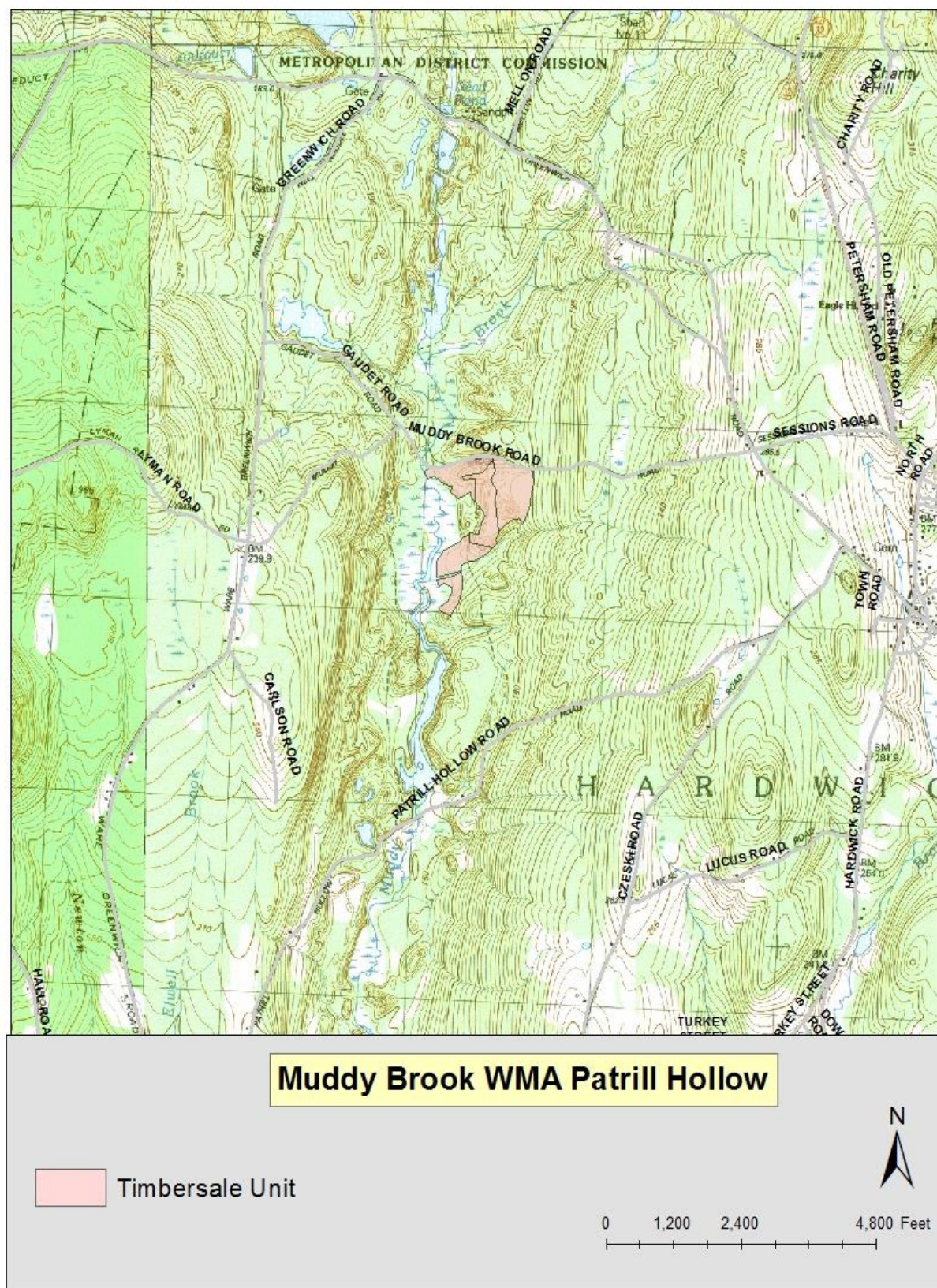


Figure 1, Muddy Brook WMA Locus FCP Stand Map

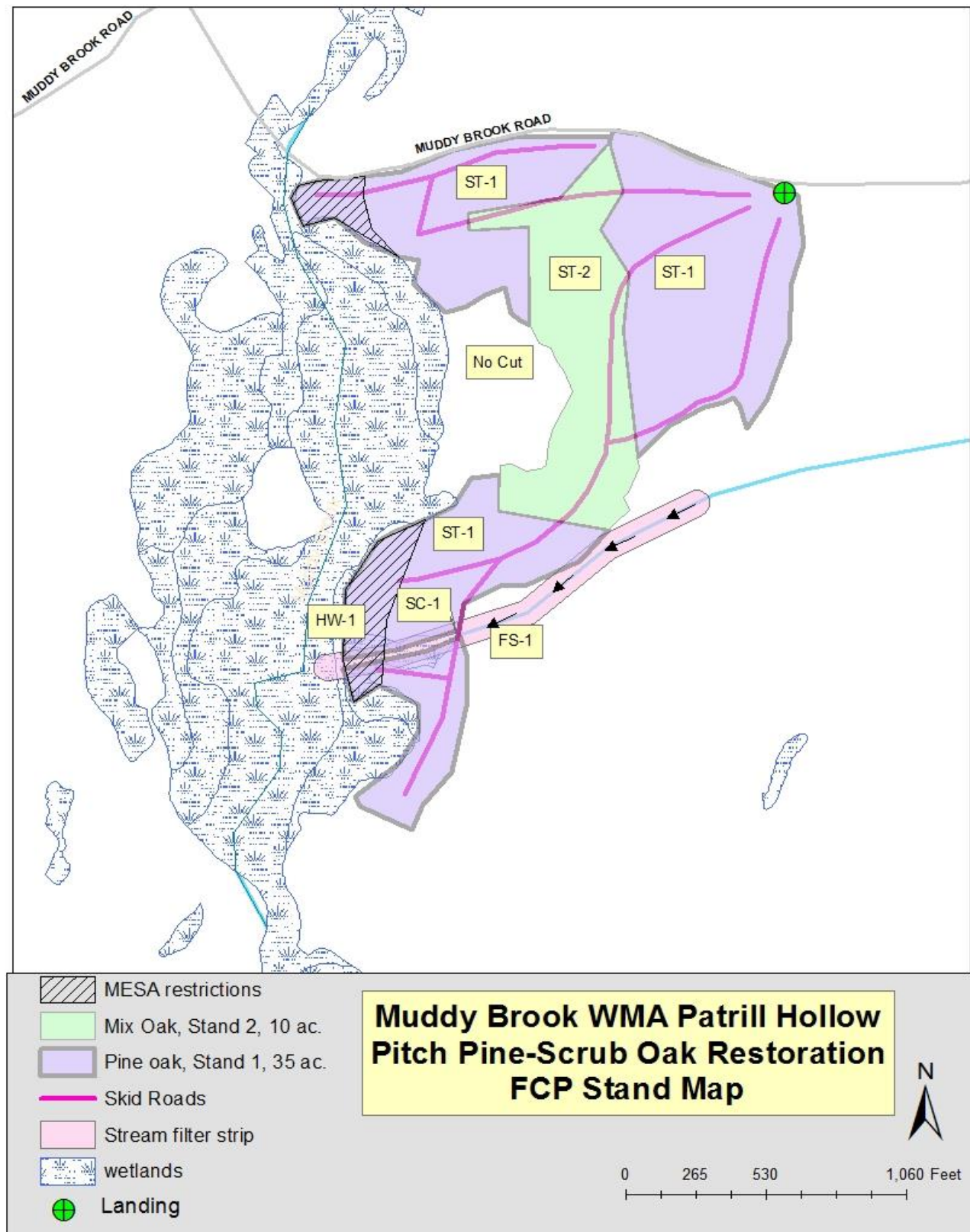


Figure 2, Muddy Brook WMA Base FCP Stand Map

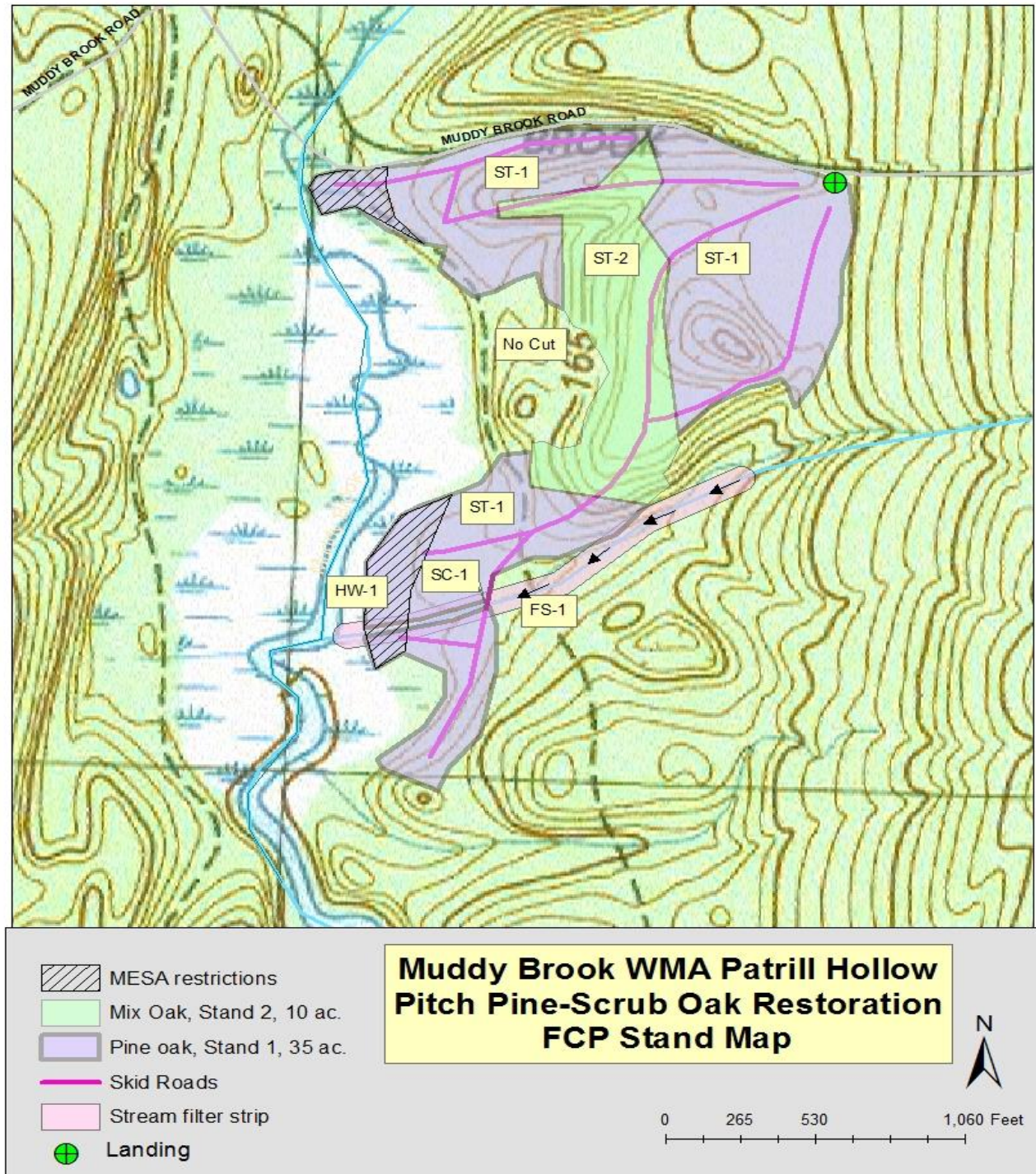


Figure 3, Muddy Brook WMA Topo FCP Stand Map

Figure 4, Muddy Brook WMA Ortho FCP Stand Map

