

Figure 3 a

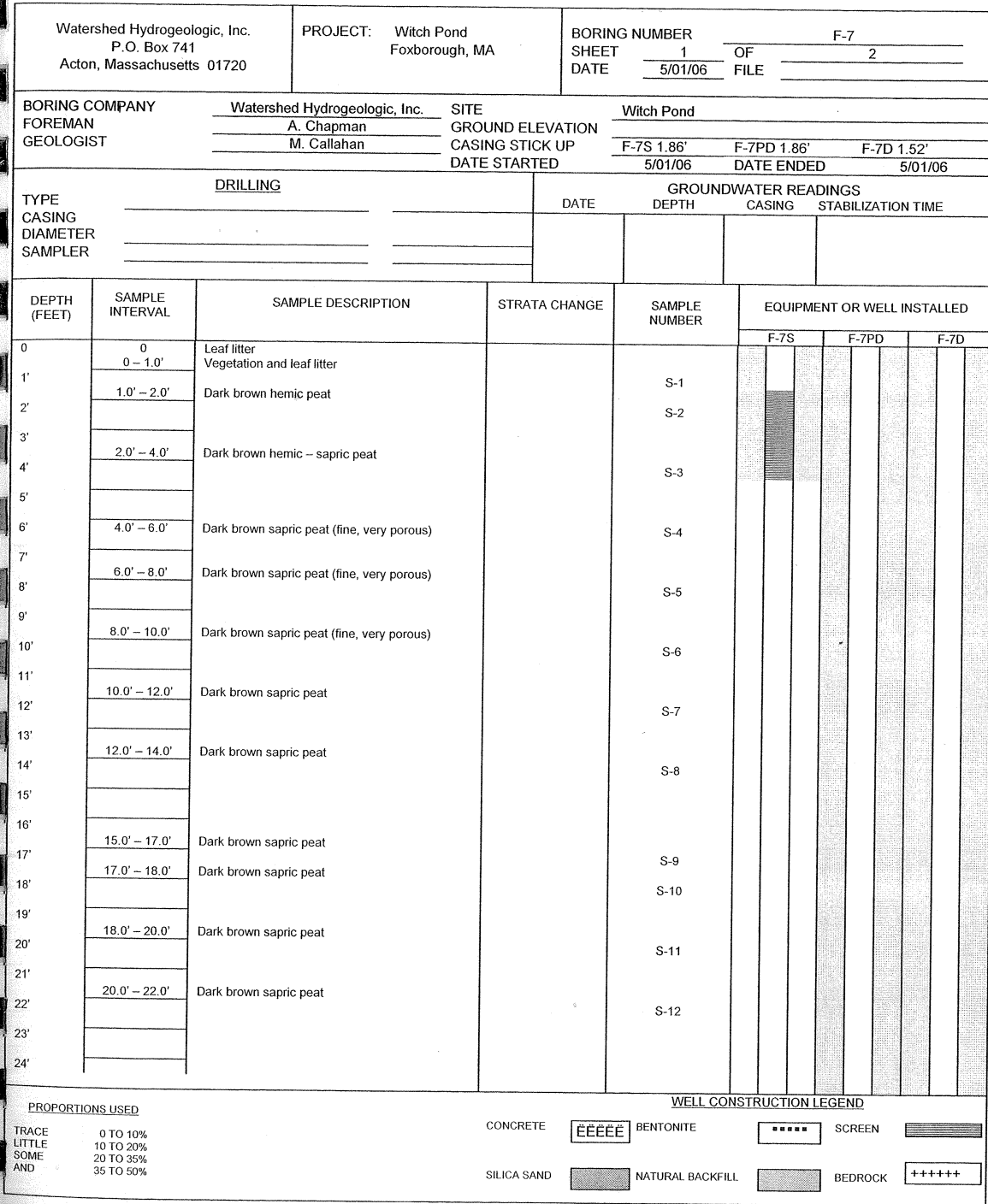


Figure 3 b

Watershed Hydrogeologic, Inc. P.O. Box 741 Acton, Massachusetts 01720		PROJECT: Witch Pond Foxborough		BORING NUMBER <u>F-7</u>			
				SHEET	<u>2</u>	OF	<u>2</u>
				DATE	<u>5/1/06</u>	FILE	
DEPTH (FEET)	SAMPLE INTERVAL	SAMPLE DESCRIPTION	STRATA CHANGE	SAMPLE NUMBER	EQUIPMENT OR WELL INSTALLED		
					F-7S	F-7PD	F-7D
25'	22.0' - 25.0'	Dark brown sapric peat (very fine, loose)		S-13			
26'							
27'							
28'	25.0' - 28.0'	Dark brown sapric peat (very fine, loose)		S-14			
29'							
30'							
31'							
32'							
33'							
34'							
35'							
36'		<i>36</i>					
37'							
38'		<i>38</i>					
39'	28.0' - 39.0'	Dark brown sapric peat					
40'		Sand					
41'							