

# DCR Stewardship Council Presentation

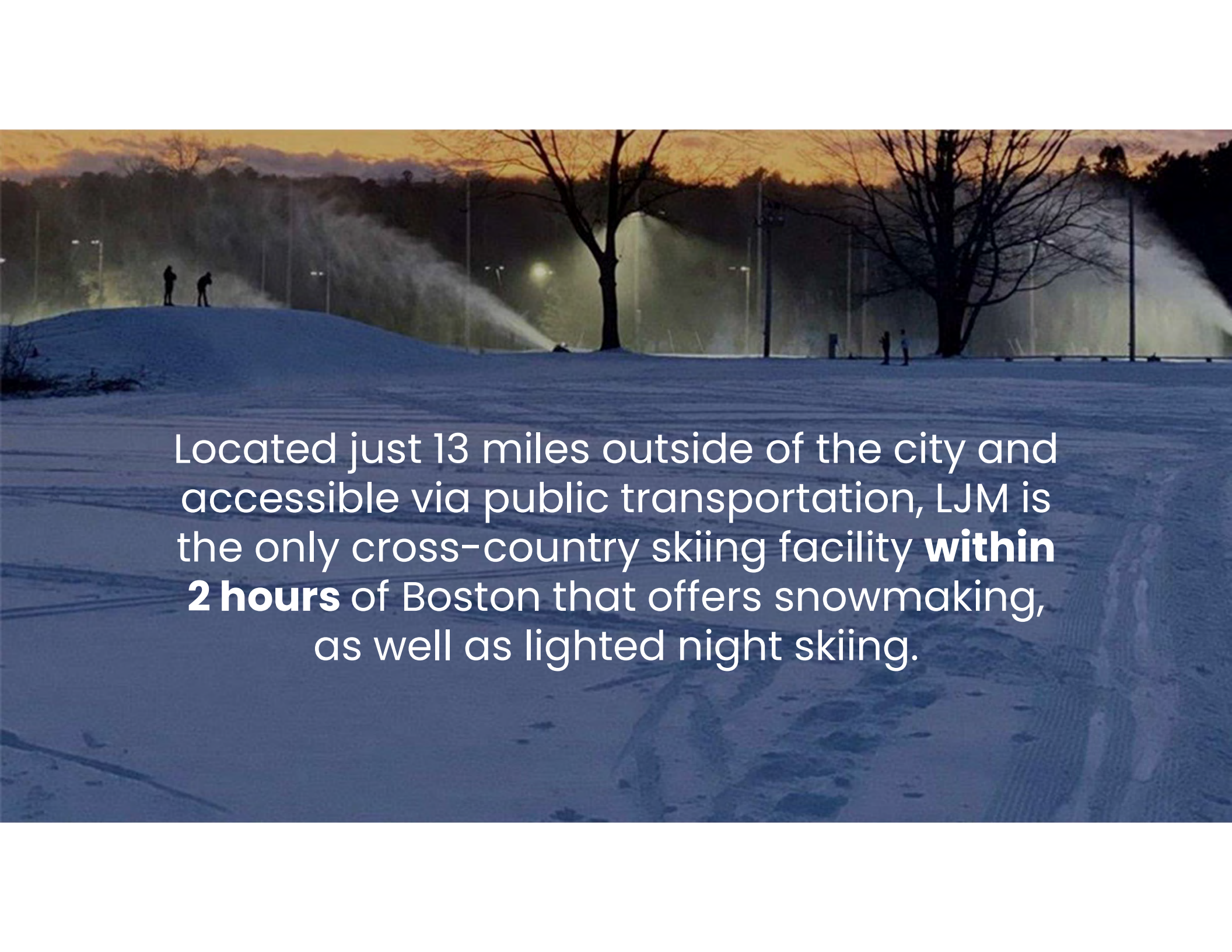
December 9, 2021





The **Leo J. Martin Golf Course & Ski Track** is a unique DCR property that is home to a vibrant and passionate community of cross-country skiers.





Located just 13 miles outside of the city and accessible via public transportation, LJM is the only cross-country skiing facility **within 2 hours** of Boston that offers snowmaking, as well as lighted night skiing.



**2021**

The ski community begins its **47<sup>th</sup> season!**

**2015**

The facility is renamed the Leo J. Martin Golf Course **& Ski Track**

**1974**

Recreational **Skiing** makes its debut, thanks to partnership between CRR and DCR

**1930**

The **Leo J. Martin** golf course is built

A legacy of skiing for **over 45 years...**







The ski track is home to a diverse range of skiers, clubs and community organizations, including the region's only **adaptive skiing program** for people with disabilities. Open **7 days per week** from mid-December to mid-March, LJM can receive upwards of **1,000 visitors per day, outpacing golf visitation by 3x.**

**400+**

**High School Students**

from 13 high school teams depend on the LJM Ski Track as their *primary* training and racing facility.

**300+**

**Children Age 6-18**

participate in either competitive or recreational groups for much needed outdoor winter recreation.

**853** Adults

**132** Children

were able to take an affordable group or individual ski lesson from CRR.

*Data from the 2020-21 ski season, which saw numbers RISE during the COVID-19 pandemic.*



The Leo J. Martin Ski Track is the primary – and in low-snow seasons, ONLY – venue for competitive training and racing in Eastern Massachusetts.



*Photo: Jamie Doucett*





Photo: US National Team Member Julia Kern, who grew up training and racing at LJM

*Credit: Nordic Focus, sourced from FasterSkier.com*



Photo: Dan Cossen, 6-time Paralympic medalist (1 Gold, 4 Silver, 1 Bronze) in biathlon and cross-country skiing, who trains at LJM

*Credit: U.S. Paralympics*



## Safe Outdoor Winter Recreation



With safety protocols in place during the 2020-21 season, the Leo J. Martin Ski Track was able to allow all programming to continue during the COVID-19 pandemic. With few outdoor winter recreation facilities available in the metro area, LJM was able to fill a critical public need.





# The Friends of Leo J. Martin Skiing

Founded in 2014, we are a nonprofit organization that works in close partnership with the DCR to promote and enhance opportunities for cross-country skiing. Working to achieve our shared goals, we help make LJM one of the most inclusive, accessible and efficient outdoor winter recreation facilities in the Boston metro area.

## Our Pillars

**Build**



**Broaden**



**Diversify**



# Build.

We work in close partnership with the DCR to make venue and program improvements at Leo J. Martin. Our work to sponsor and fund projects leverages the State's existing investments to improve skiing and golf at a metro resource that makes both of these activities more accessible to the public. Together, we ensure this facility is optimized for maximum year-round use and enjoyment.



DCR + FOLJMS  
Partnership Achievement

## Improved Snowmaking & Grooming Equipment

XC ski trail maintenance requires very specialized equipment. In 2021, FOLJMS helped fund and support the construction of a new interim pump for snowmaking, and also provided expert consultation to help DCR source new snow guns and a PistenBully – a critical machine for reliable grooming.



DCR + FOLJMS  
Partnership Achievement

## Building Mountains Together

It may be only one so far, but  
“Mt FOLJMS” is a popular  
addition to what was previously  
a relatively flat course. In 2017,  
FOLJMS designed and installed  
this challenging “B” grade  
climb to improve and enhance  
the skier experience at LJM,  
helping develop stronger and  
faster Boston area athletes.



*Photo: Jamie Doucett*



DCR + FOLJMS  
Partnership Achievement



## Energy-Efficient Lighting

In 2015, FOLJMS and the DCR were able to help reduce LJM's carbon footprint with LED lighting, while also providing expanded access to trails for night skiing. Not only did this reduce operating costs and maintenance, it also improved skier safety.

# Broaden.

Our mission is to help develop the Leo J. Martin Ski Track into a facility that meets the full range of needs for an increasingly diverse community of skiers and outdoor enthusiasts. Through our partnerships and projects, we aim to expand access to and promote the growth of cross-country skiing for users of all ages and abilities.



DCR, Local Partners + FOLJMS  
Partnership Program

## Universal Access

FOLJMS collaborates with the DCR, the New England Nordic Ski Association (NENSA) and CRR to support the region's only adaptive skiing program for people with physical, behavioral and intellectual disabilities. DCR trains volunteers and CRR provides sit-skis and kicksleds at no extra charge.





DCR + FOLJMS  
Partnership Achievement

## **ADA-Compliant Bathrooms**

Focused on the shared goal of making LJM more accessible, FOLJMS collaborated with [redacted] and provided feedback to the DCR on the design of ADA-compliant bathrooms on the first floor of the lodge that were installed in 2016. Previously, the only bathrooms were located on the lower level, which could only be accessed by using stairs.



# Diversify.

FOLJMS is committed to inclusive and equitable access for all, helping enable use for chronically underserved and underfunded communities. We are proud to support Youth Enrichment Services (YES) and the Boys and Girls Club of Boston.

CRR + FOLJMS  
Partnership Program

## The Boys & Girls Club

Beginning with the 2014-15 season, FOLJMS partnered with CRR to provide lessons and ski equipment rentals to children aged 11-15 from the Boston Boys & Girls Club. This is an ongoing, inclusive program that FOLJMS is proud to sponsor annually. About 40 skiers participate each year.

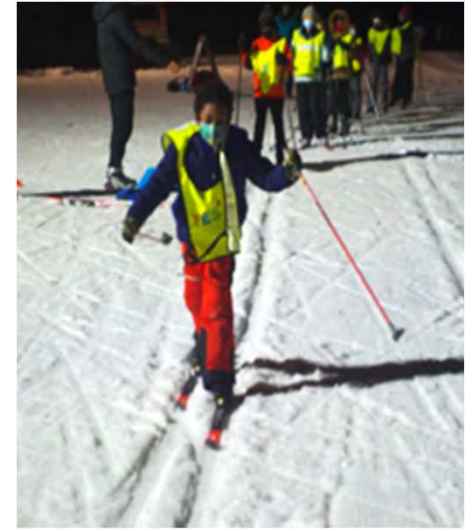





Local Partners + FOLJMS  
Partnership Program

## Youth Enrichment Services (YES)

In 2014, FOLJMS sparked a partnership among YES, the Eastern Mass Cross Country (EMXC) ski club, and CRR to introduce underserved Boston youth to XC skiing. The program aims to help participants build strength, stamina and leadership skills. For 2021, a grant from the Share Winter Foundation will enable 40 young people to improve their skiing at Leo J. Martin.



A photograph of three young people cross-country skiing on a snowy slope during the "blue hour" of dusk. The skier on the left wears a purple jacket and a yellow vest with "YES" on it. The middle skier wears a grey jacket and a yellow vest with "ES" on it. The skier on the right wears a blue jacket and a black face mask. All three are wearing ski gear, including helmets or headbands, goggles, and ski poles. The background shows a snowy landscape with trees and a building under a cloudy sky with a hint of sunset.

“Cross-country skiing is a winter activity that most of our youth don’t normally have access to. Working with local partners, we are able to offer the program in a structured setting and introduce young people to a new **confidence-building** sport.”

– Bryan Van Dorpe, Executive Director of YES

SOURCE: FASTERSKIER, YES Operations Snow Sports Engaging Youth in the Outdoors, 11/8/2021





75% of the families that YES works with report that these programs are their child's **only access to outdoor winter activities.**

*SOURCE: FASTERSKIER, YES Operations Snow Sports Engaging Youth in the Outdoors, 11/8/2021*



# Our 2022 Goals

## Environmental Stewardship

As cross-country skiers, we care deeply about reducing our environmental impact and working to mitigate climate change.

## Accessibility & Diversity

We plan to expand our existing programs and create new ones to be more inclusive and broaden participation.

## Community Partnerships

We will work to build a more dedicated partnership with our golf community, strengthening our combined ability to achieve shared goals.

## Infrastructure Enhancements

We are focused on three major initiatives that will help improve operational efficiency, reduce our environmental impact and improve accessibility.



# Upcoming Initiatives

The partnership between FOLJMS and the DCR is essential to the ongoing success and survival of LJM's cross-country ski community. Together, we are working to achieve three future projects that align with our shared goals of mitigating climate impact, increasing accessibility and enhancing the facility for the well-being of all users.



## **New Pumphouse & Buried Pipes**



Potentially powered by  
solar power canopy



## **Grooming & Snowmaking Equipment Replacement**



## **MBTA Walking Route Access**



## New Pump House & Buried Pipes Project

In 2018, FOLJMS partially funded the design plan for this large-scale project, which is now “shovel-ready.” The project benefits include:

- **Improved irrigation** using a buried snowmaking network on holes 1-6
- A more **environmentally-appropriate** location for the pumphouse, near the maintenance area and away from the floodplain
- More and better **lighting** around the driving range and holes 1, 5 and 6
- **Reduced maintenance** and facility closures; the current system requires seasonal removal or re-installation of the above-ground piping system
- Enabling snow making in **colder temperatures**, improving efficiency
- Eliminating the risk of **frozen pipes**
- Eliminating the **water waste** attendant to the above ground piping

This project also has the potential to be an **energy-neutral** initiative with the installation of a solar power panel canopy in the LJM parking lot



# Grooming & Snowmaking Equipment Replacement

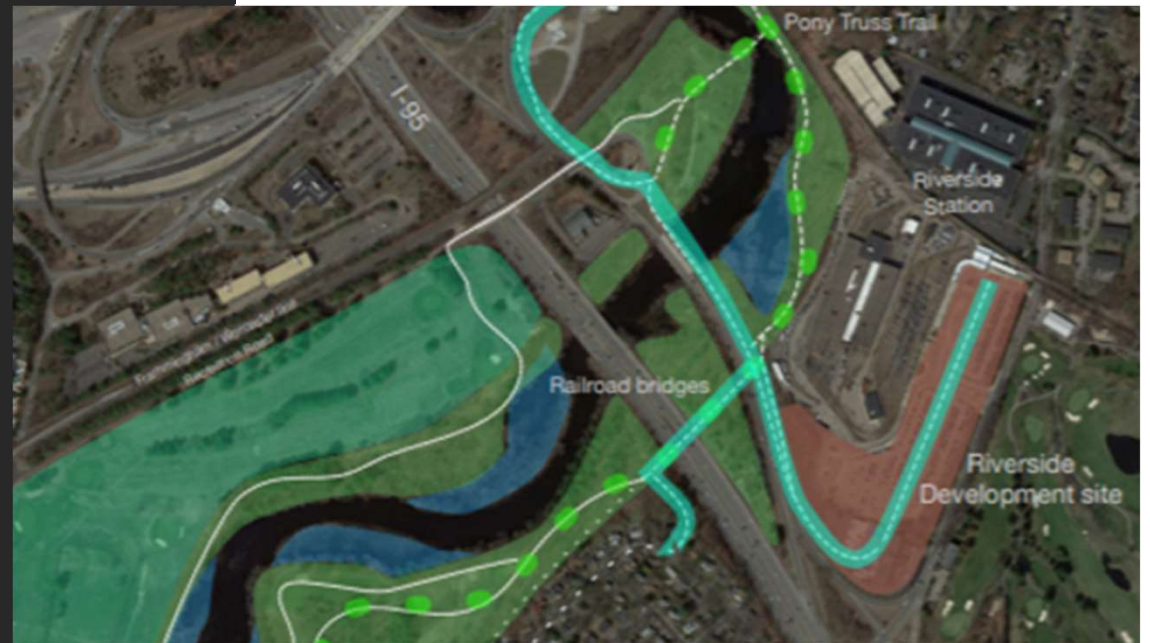
LJM is currently using 20-year old grooming equipment that has reached the end of its useful life and requires replacement. FOLJMS is working with the DCR to identify an option with a more efficient and flexible configuration designed to reduce maintenance. The ski track also needs to replace broken snow guns with newer, more efficient equipment that requires less water and power.






# MBTA Walking Route Access

As part of our commitment to inclusive and equitable access to the Ski Track, FOLJMS seeks to link LJM to the MBTA Riverside Green Line Station through a dedicated pedestrian path. This public transit access would make LJM more accessible to both golfers and skiers.



Leo J. Martin is a very special place for the cross-country skiing community.



A wide-angle photograph of a snowy outdoor recreation area at dusk. The foreground is a smooth, snow-covered slope. In the middle ground, a line of dark evergreen trees frames a view of a distant building, possibly a lodge or cabin, which is illuminated by warm lights. The sky is a mix of deep blue and purple, with some clouds catching the low light of the setting or rising sun. The overall mood is serene and quiet.

FOLJMS is committed to working in partnership with the DCR to ensure it remains a vibrant outdoor recreation facility now and far into the future.



**Thank  
You**

