

# FY17 Forestry Project Proposals

## Wachusett Section



Commonwealth of Massachusetts  
Department of Conservation and Recreation  
Division of Water Supply Protection

# DWSP Internal Review of Proposed Forest Management Operations

- Each year, all watershed forest management operations go through an internal review process designed to tap into more expertise than is available to the forester alone.

The lots are reviewed by...

- Regional Directors
  - Wildlife biologists
  - Natural Resource staff
  - Environmental Quality staff
  - Civil Engineering
  - DCR Archaeologist
- Comments\recommendations\restrictions are submitted to the foresters and incorporated into the management of each operation.

# Forest Management Summary

- Work is focused where a diversity of age classes is lacking
- Openings are made in the forest overstory in order to give young trees the space and light they need to thrive
- Openings range in size up to 2 acres and average about 1 acre in each operation
- A few older trees are retained in most openings which provide important habitat and structural diversity



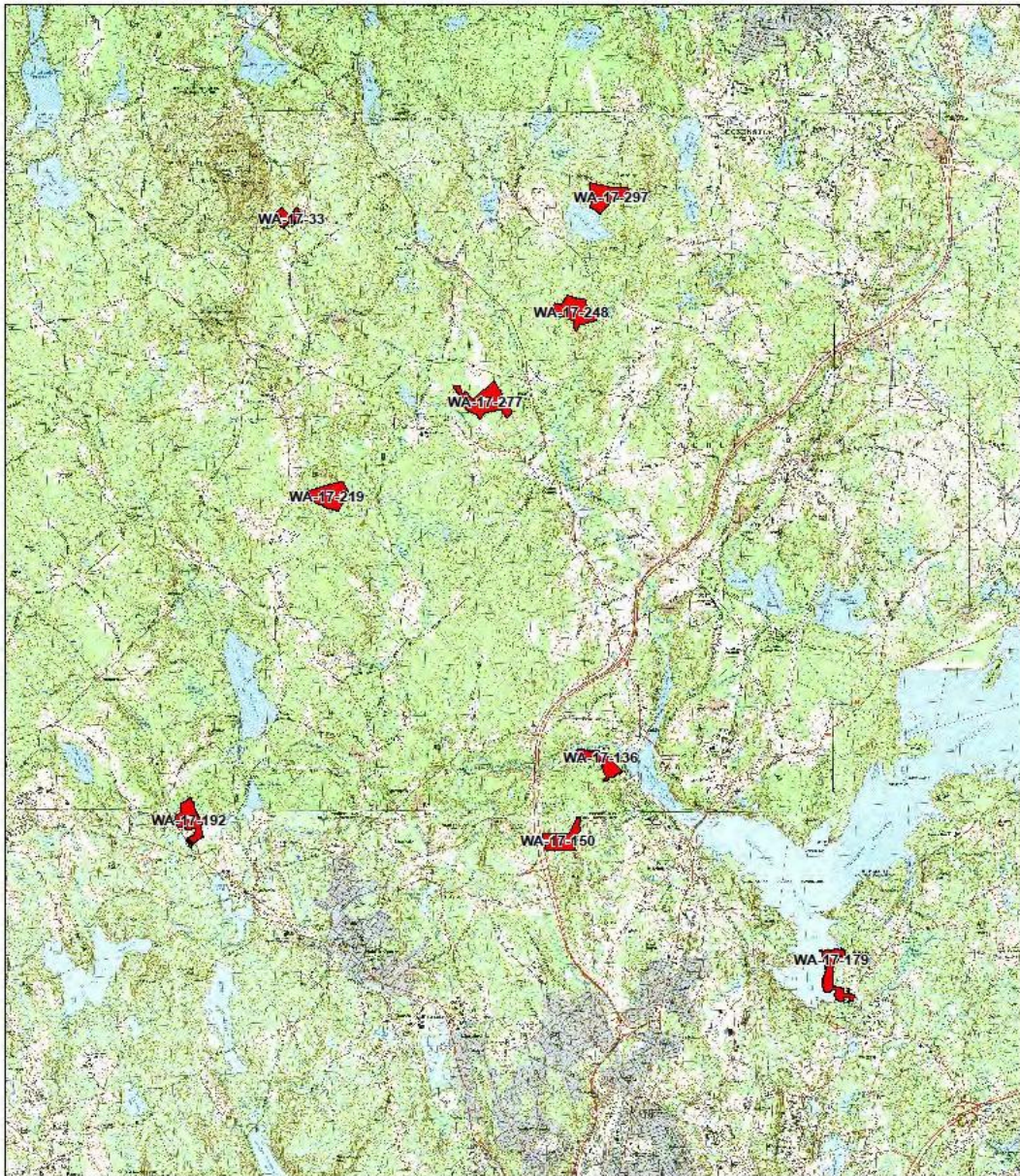
WACH. RES. W. BOYLSTON. 8-YEAR OLD WHITE PINES & 6 YR. OLD MAPLES, PLANTED SPRING OF 1903. PINES 3 YRS. OLD, MAPLES 1 YR. APR. 1, '09. 6327

# DCR Wachusett Reservoir

## Proposed Timber Sales FY 2017

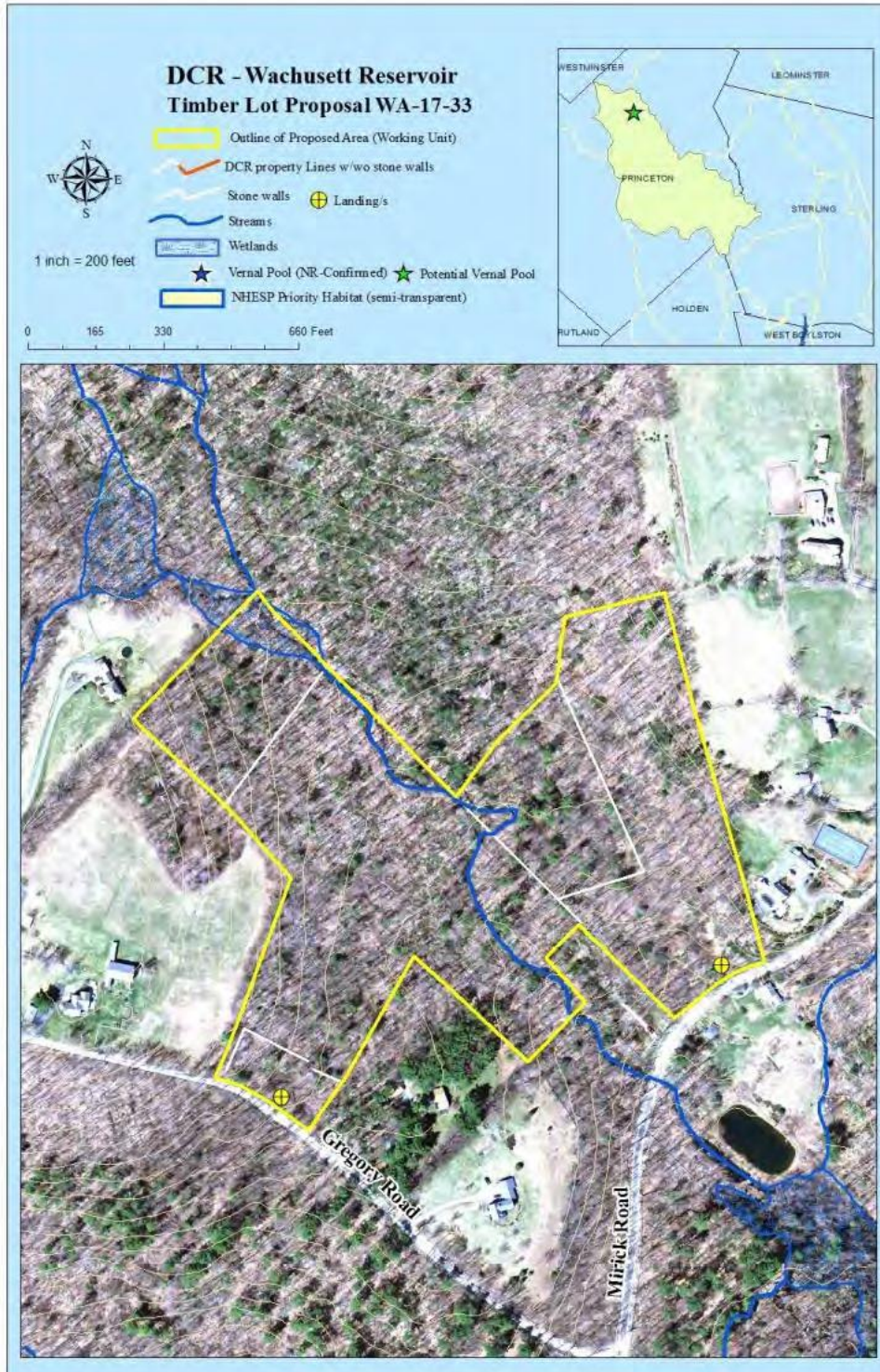


Locus Map (Scale 1:72,000 - 1 inch=6,000 feet)



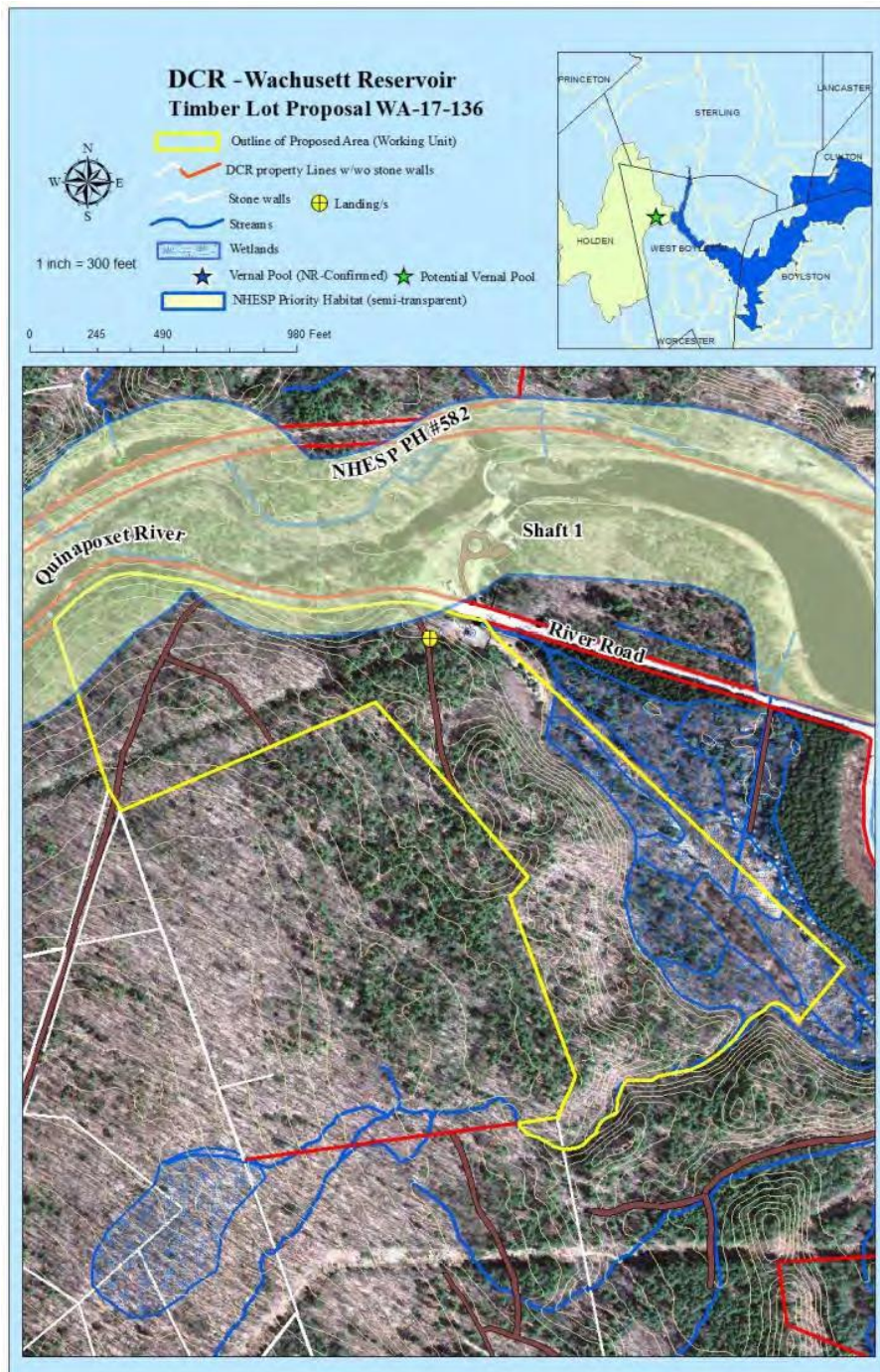
# Gregory Road Lot

- 24 acres
- Diverse hardwood species – ash, hickory, oak, sugar maple
- Significant 2008 ice storm damage
- Two landings planned to avoid stream crossing



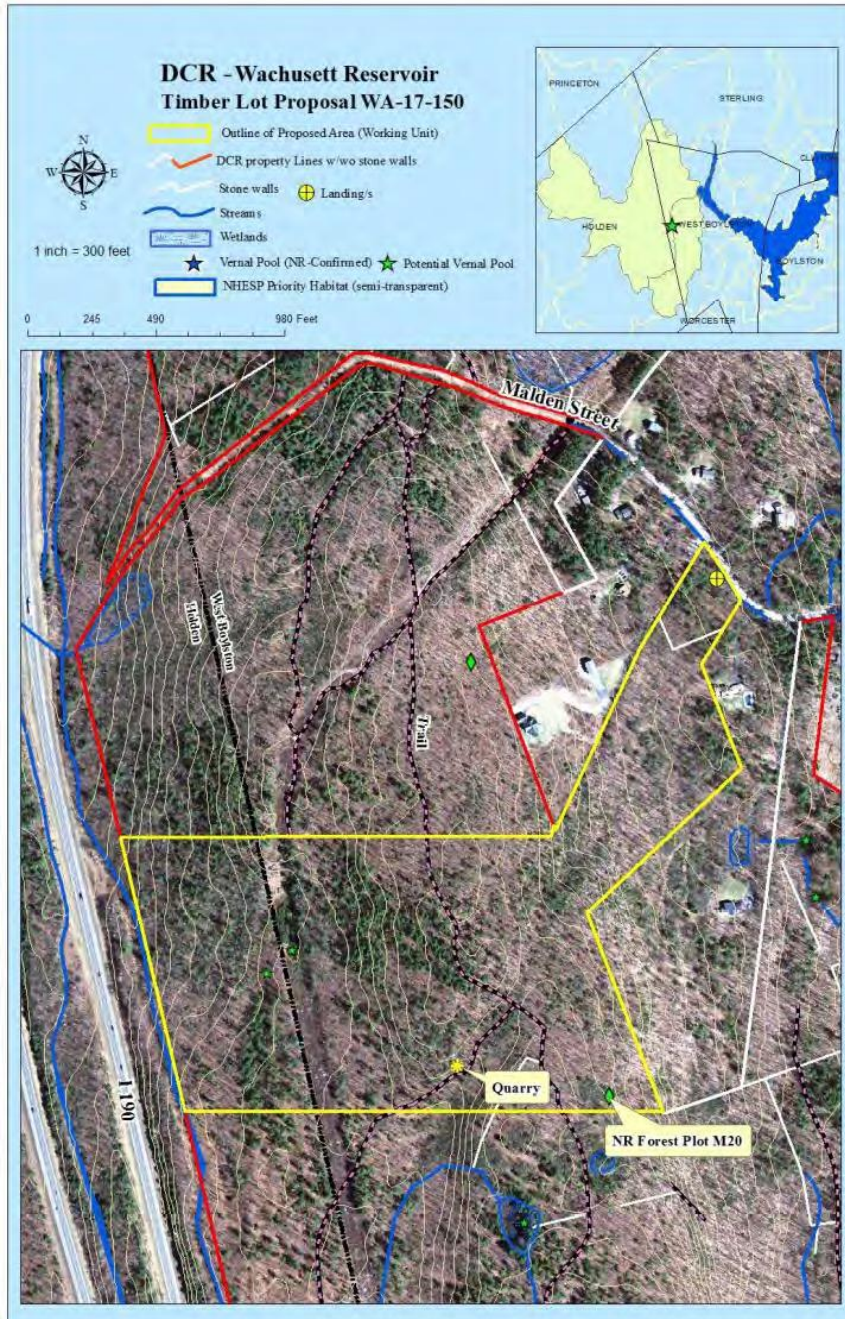
# River Road Lot

- 29 acres
- Predominately red oak and white pine
- Limited advance regeneration
- Primary objective is to get regeneration established
- Intersects NHESP Priority Habitat for wood turtles



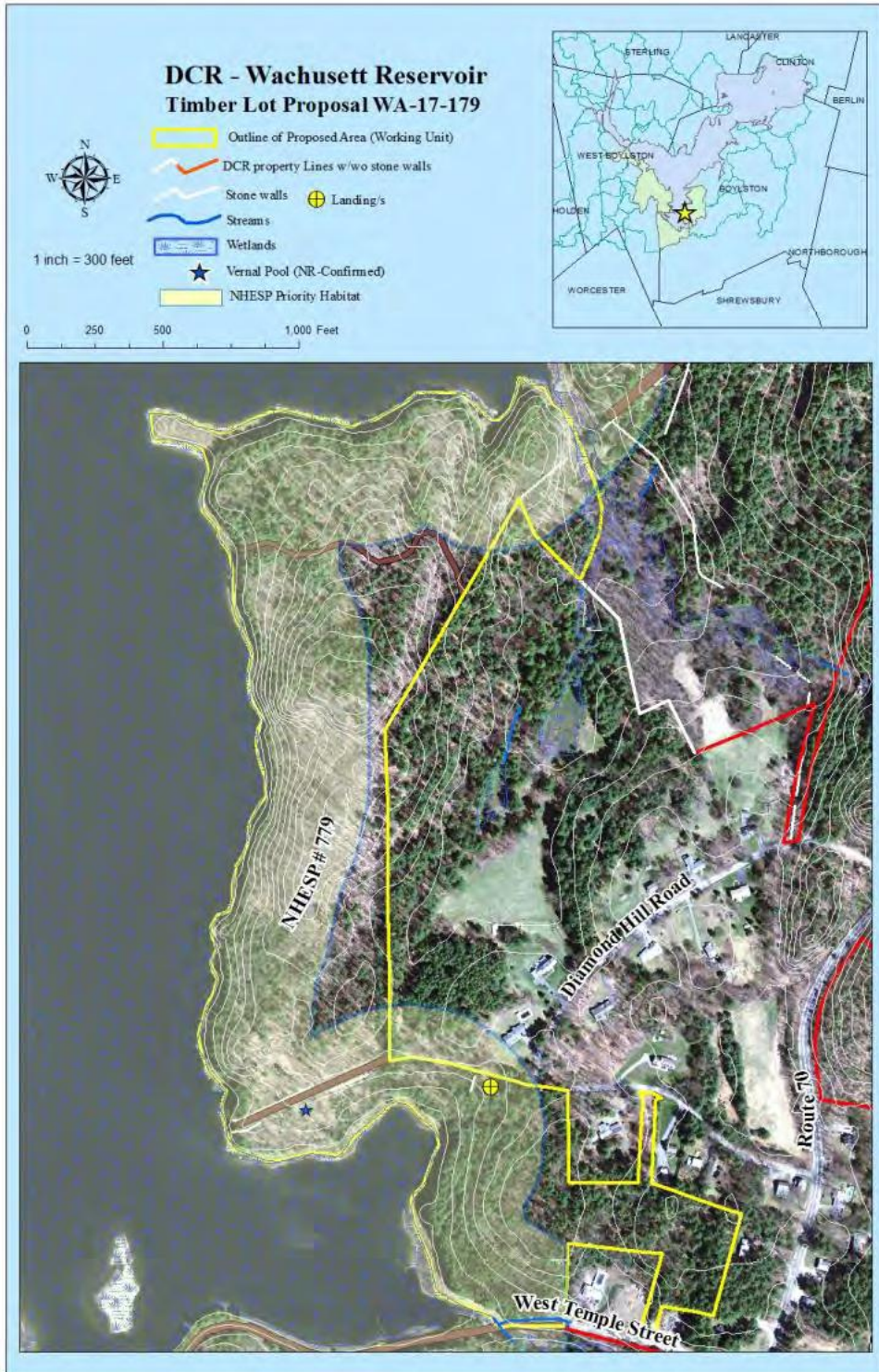
# Malden Street Lot

- 50 acres
- Predominately red oak and white pine
- Very limited advance regeneration
- Primary objective is to get regeneration established
- White pine regeneration will be the focus
- Numerous small rock quarries on this very ledgy hill
- The endangered Houghton's Flatsedge is known to be present under the powerline



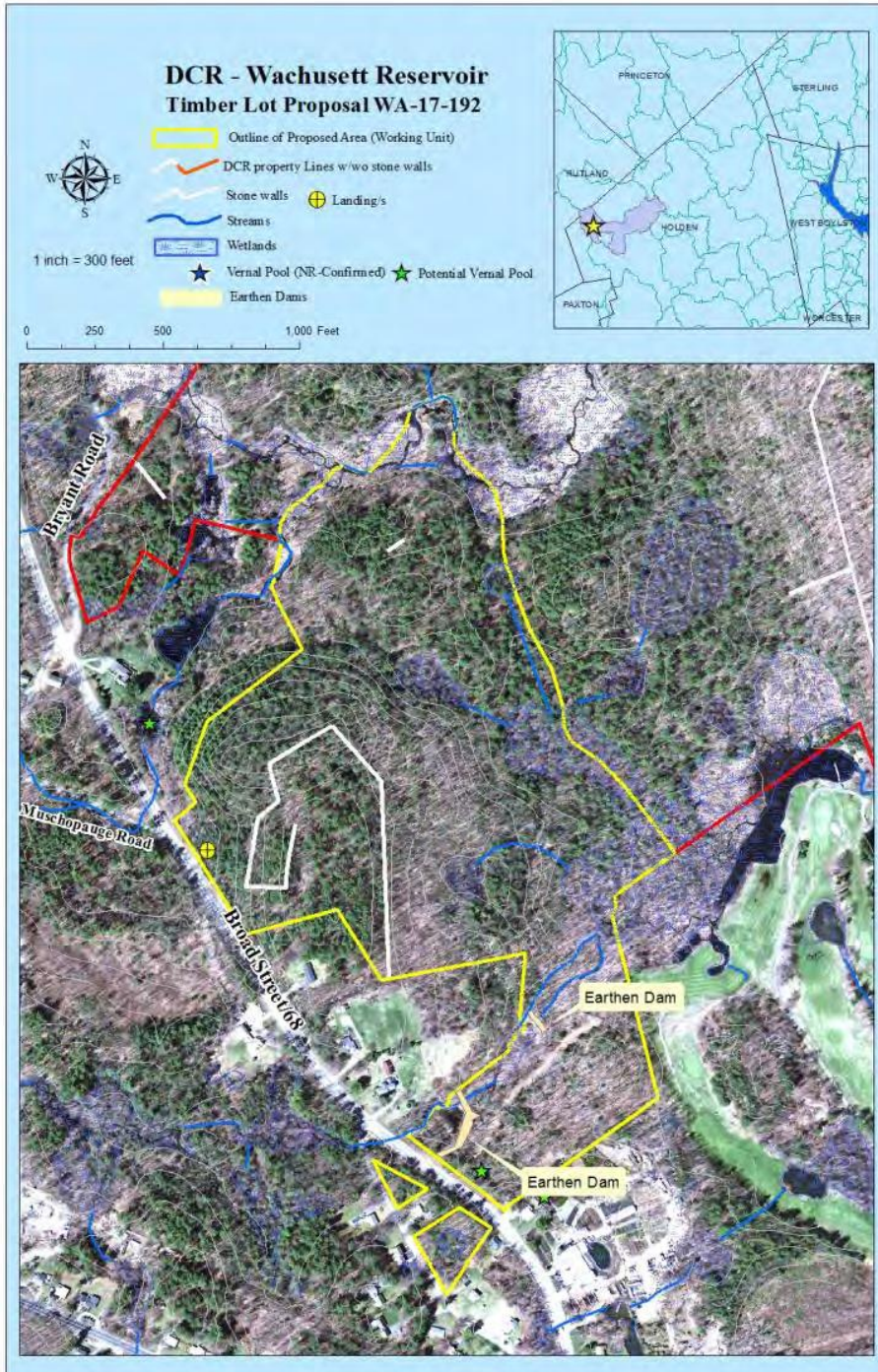
# Gate 16 Lot

- 55 acres
- Predominately red oak and white pine along with sugar maple, red maple and many other hardwoods
- Good advance regeneration
- Vernal pool
- Intersects NHESP Priority Habitat for Common loon



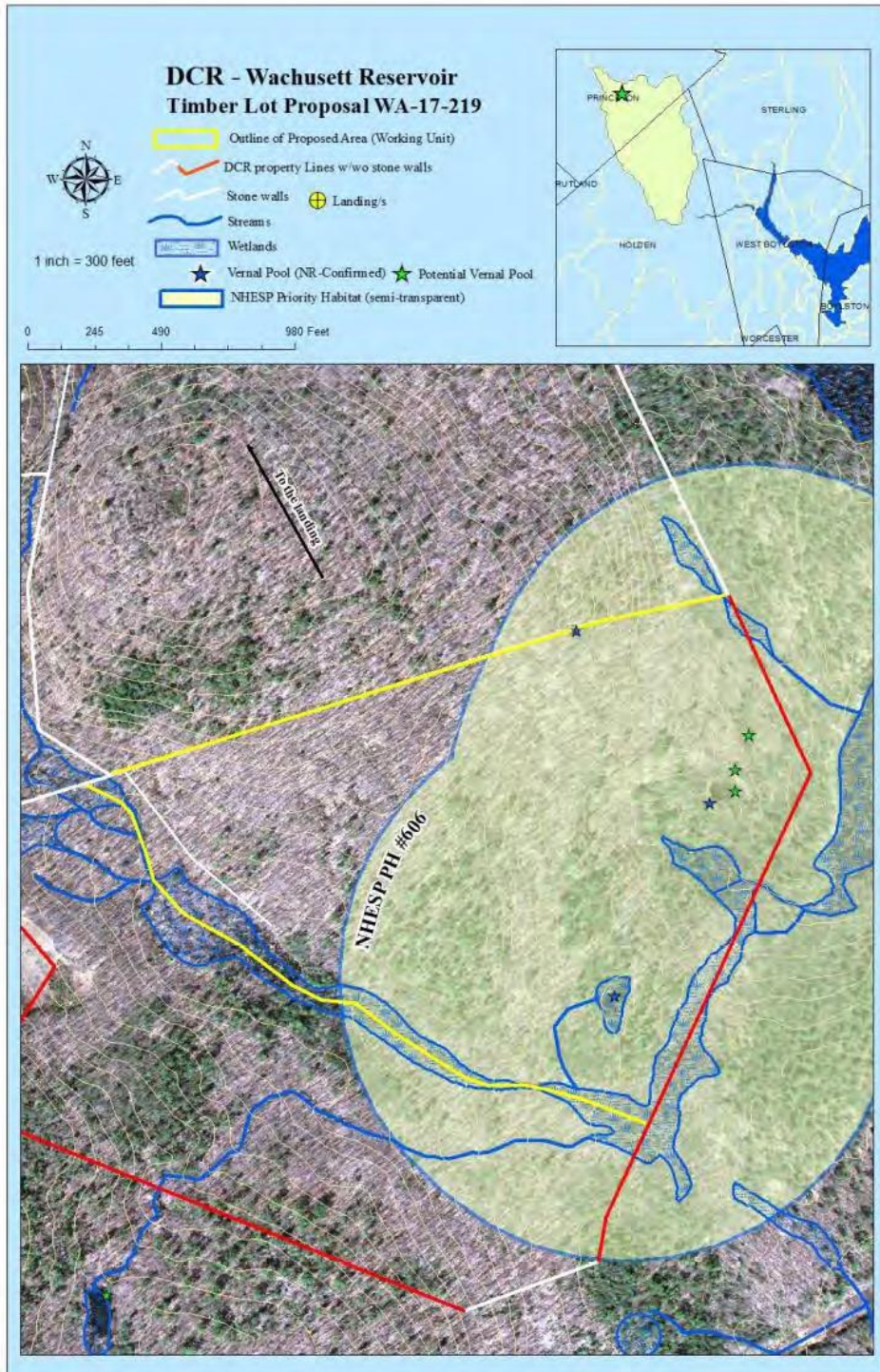
# Kicker Car Lot

- 62 acres
- Predominately red oak and white pine
- Adequate advance regeneration - openings
- Significant areas of thick Mountain laurel – establishment cutting
- Several vernal pools
- The Kicker Car Co. millpond and dams



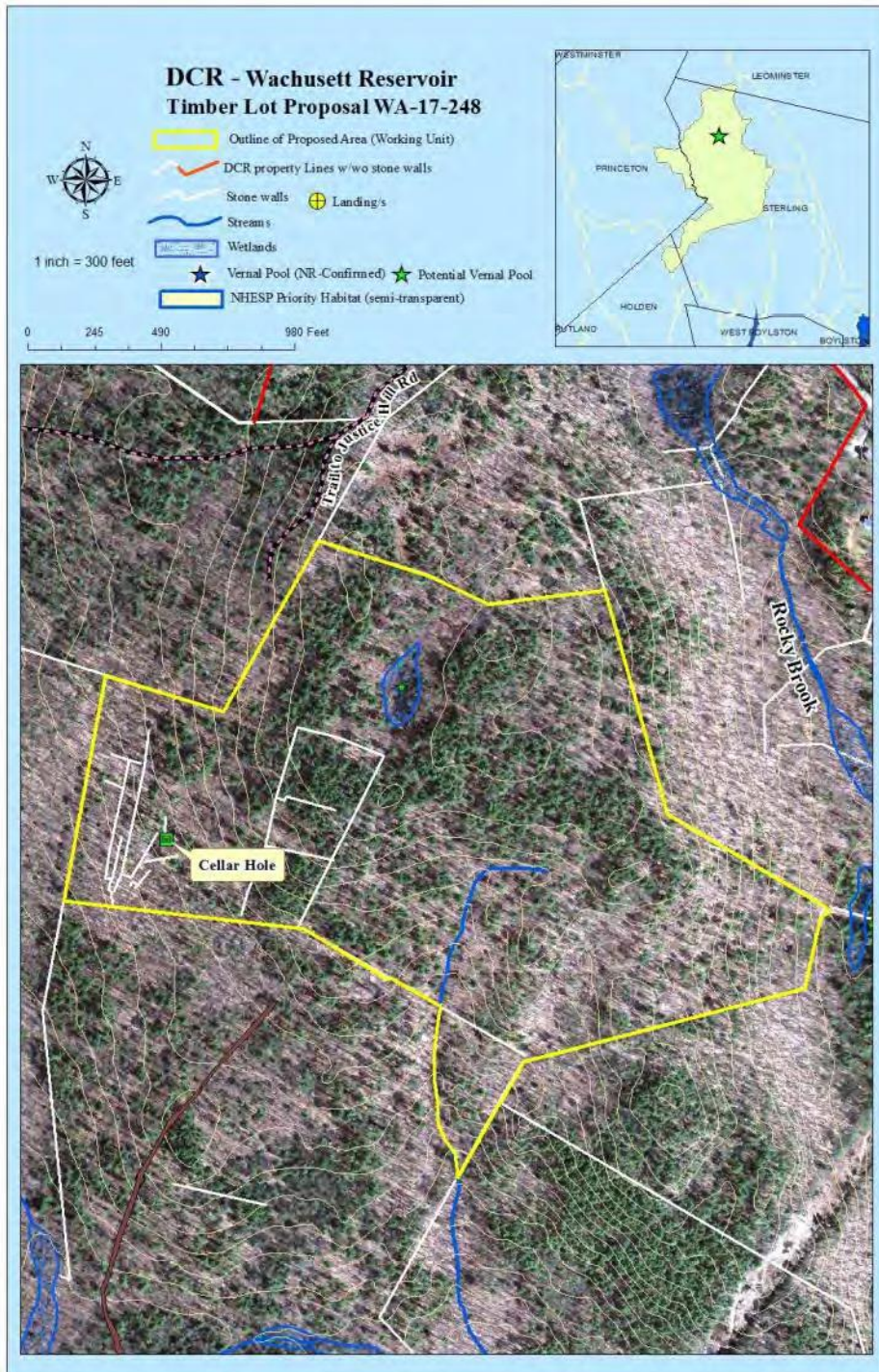
# Flagg Hill Lot

- 64 acres
- Predominately red oak along with white oak, white pine, black birch, red maple, hickory and paper birch
- Good advance regeneration
- Numerous vernal pools
- Intersects NHESP Priority Habitat for marbled salamander



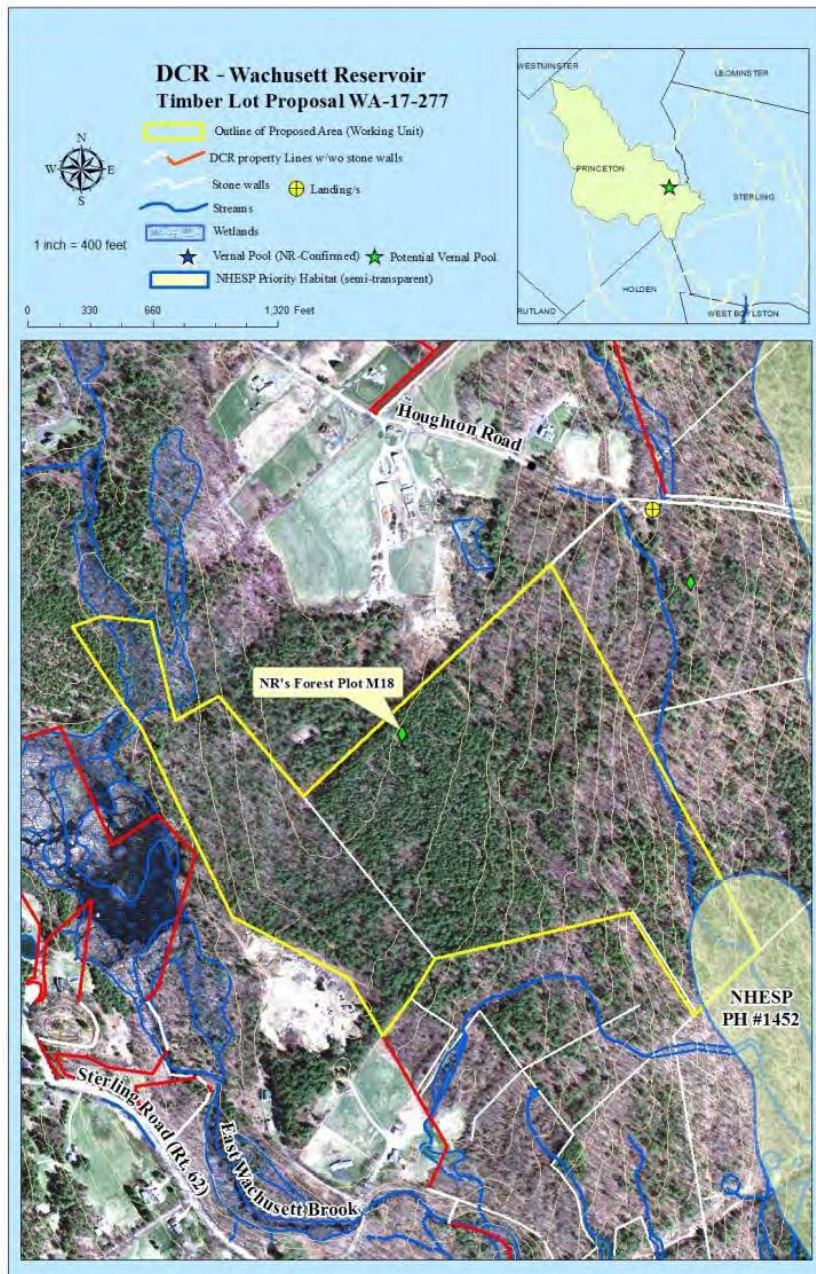
# Stuart Pasture Lot

- 62 acres
- Predominately white pine along with black birch, red oak, red maple and black cherry
- White pine is primarily multi-stemmed pasture pine
- Good advance regeneration
- Vernal pool



# Houghton Road Lot

- 87 acres
- Predominately white pine along with red maple, hickory, red oak, black birch and white oak
- Very large, scattered open-grown white oaks and hickories
- Excellent advance regeneration
- Intersect with NHESP Priority Habitat for wood turtle



# Hycrest Lot

- 65 acres
- Predominately red oak and white pine
- Chestnut oak on the rocky ledges with thin soil
- Good advance regeneration
- Intersects NHESP Priority Habitat for Common loon

