



OFFICE OF WATER RESOURCES ANNUAL REPORT, FISCAL YEAR 2020



MASSACHUSETTS DEPARTMENT OF CONSERVATION AND RECREATION

DIVISION OF WATER SUPPLY PROTECTION

OFFICE OF WATER RESOURCES

MA DEPARTMENT OF CONSERVATION AND RECREATION

The mission of the **Department of Conservation and Recreation** (DCR) is to protect, promote, and enhance our common wealth of natural, cultural, and recreational resources for the well-being of all. DCR fulfills its mission through the stewardship of over 450,000 acres of parks and forests, beaches, bike trails, watersheds, dams, and parkways. DCR also promotes conservation efforts throughout the state, including water resource protection, beach re-nourishment, aquatic invasive species management, and flood hazard mitigation.



A-1 Reservoir, Westborough

DCR OFFICE OF WATER RESOURCES

The DCR **Office of Water Resources** (OWR) works on behalf of people and the environment to protect the water resources on which we all depend. By providing science-based policy, technical assistance, and resource management, our four program areas work to ensure that Massachusetts has plentiful water to support a healthy environment and economic development for generations to come, and that those generations will be better prepared to face extreme weather and will have access to lakes, ponds, and rivers that are healthy.

On the following pages we invite you to learn more about our:

- Flood Hazard Management Program
- Lakes and Ponds Program
- Water Resources Assessment and Planning Program and
- USGS Cooperative Program



Cleveland Pond, Ames Nowell State Park

FLOOD HAZARD MANAGEMENT PROGRAM

The Flood Hazard Management Program (FHMP) is the state coordinating office for the National Flood Insurance Program (NFIP).

- FHMP staff helps homeowners, professionals, and local officials to navigate the requirements of the NFIP.
- Staff provides technical assistance to NFIP communities on a wide range of matters, including floodplain management best practices, flood-resistant standards for construction, floodplain mapping issues, flood insurance questions, and mitigation options to reduce flood losses.



FY2020 FHMP HIGHLIGHTS

In FY2020, FHMP staff participated at the national level in the development and implementation of the Federal Emergency Management Agency’s new mitigation grant program, “Building Resilient Infrastructure and Communities” (BRIC). Other accomplishments of the FHMP in FY2020 include:

- 22 Community Assistance Visits and 16 training events
- More than 500 Technical Assistance contacts to help Massachusetts’ 341 NFIP communities
- Development of an updated Massachusetts Model Floodplain Bylaw to assist NFIP communities with federal compliance
- Coordination with state, national, federal, and local partners to monitor and review floodplain development, mitigation projects, and local and regional resiliency efforts
- Coordination with other DCR leaders on agency-wide climate-adaptation measures



LAKES AND PONDS PROGRAM

The mission of the Lakes and Ponds Program is to protect, restore, and enhance the ecological integrity and recreational opportunities of the Commonwealth's lakes and ponds, including DCR's 300 lakes and 51 freshwater swimming beaches.

- Massachusetts has over 3,500 lakes, approximately 300 of which are on DCR property.
- The program works on behalf of visitors to DCR properties and all who use lakes and ponds, including municipalities, communities, and lake advocate groups.
- The program implements its mission through protection and restoration projects; public education, outreach and technical assistance; monitoring and assessment of lakes and their watersheds; and partnerships with stakeholders at the local, regional, state, and federal levels.

Treatment for invasive milfoil,
Whitehall Pond,
Rutland State Park



FY2020 LAKES & PONDS PROGRAM HIGHLIGHTS

PREVENTING AND MANAGING THE SPREAD OF INVASIVE SPECIES

Early detection of aquatic invasive species in lakes and ponds is key for DCR staff to implement rapid response protocols and manage potential infestations as early as possible after introduction. **In FY2020**, staff began a pilot program to use environmental DNA tools, which are sensitive to detection of species and life stages that may be challenging to visually observe. These tools also allow rapid screening of water bodies. In the first season of the eDNA pilot program, neither *Hydrilla* nor Zebra Mussels, both top priorities for containment, has been detected at any new locations. Staff will continue monitoring with both traditional methods and this exciting new technology on an annual basis.

Also in FY2020:

- Staff managed nearly 1,000 acres of aquatic invasive species at DCR properties throughout the Commonwealth
- Seasonal boat ramp monitors provided public education and boat inspections at seven high-use, high-risk water bodies
- Staff offered Weed Watchers training for groups at ten locations to educate residents about aquatic invasive species and to provide hands-on training in identification.

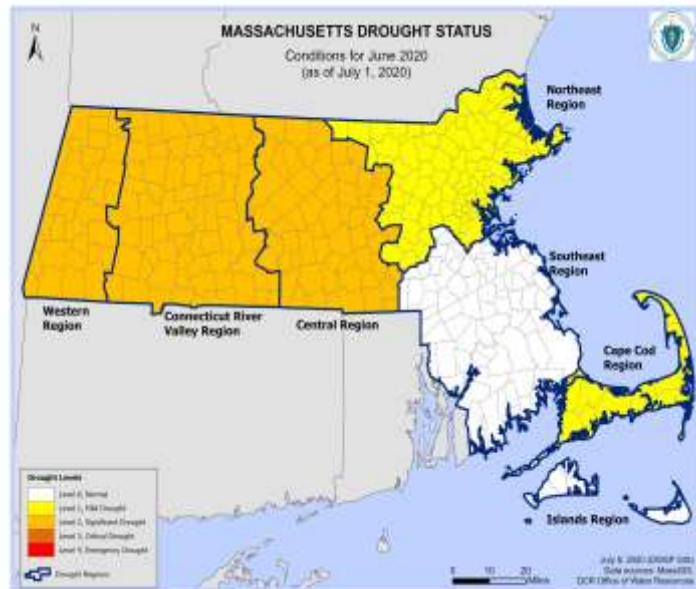
eDNA Sampling for Hydrilla
on the Connecticut River



WATER RESOURCES ASSESSMENT AND PLANNING PROGRAM

The WRAP mission is to provide science-based policy and technical assistance to decision-makers and the public to ensure that the long-term water needs of the Commonwealth's residents, communities, and environment can be met.

WRAP also provides technical and administrative staff to the Massachusetts Water Resources Commission. Established in 1956, the Commission is responsible for developing, coordinating and overseeing the Commonwealth's water policy and planning activities. To learn more about our work on Commission programs, see FY 2020 WRAP Highlights below and in the [WRC annual report](#).



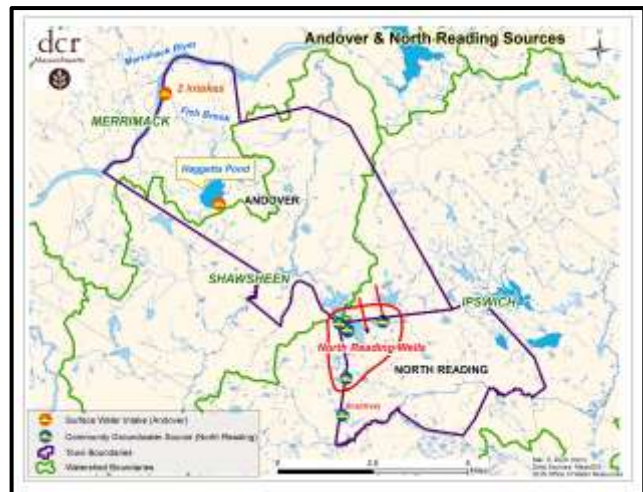
FY2020 WRAP HIGHLIGHTS

THE INTERBASIN TRANSFER ACT (ITA)

The ITA protects Massachusetts' vital water resources and the communities that rely on them. It ensures that communities transferring drinking water and wastewater between river basins practice water conservation, and that the hydrology in the donor basin is protected. The process is transparent and includes robust public input.

In FY2020, staff reviewed both new and ongoing projects including:

- Reviewed North Reading's request to purchase water from Andover, including holding required public hearings and presenting a draft staff recommendation
- Initiated review of Burlington's request to join the MWRA
- Provided MEPA comments on Auburn's proposal to purchase water from Worcester
- Reviewed proposed changes to Aquaria's monitoring conditions, which were subsequently approved by the WRC, and initiated review of proposed changes to Foxborough's monitoring conditions
- Monitored continued compliance with conditions for 12 previously approved ITA projects



FY2020 WRAP HIGHLIGHTS

MASSACHUSETTS WATER CONSERVATION STANDARDS

The Commission established the Massachusetts Water Conservation Standards (WCS) in 1992, setting statewide goals for water-use efficiency and providing guidance for effective conservation.

In FY2020, staff continued developing design and content for a user-friendly, web-based [water conservation toolkit](#). The website targets a wide range of water users, including residents, businesses, water suppliers, planners and other municipal officials, institutions, agricultural entities, and educators. Branded “Conserve MA Water,” the website (www.mass.gov/conservemawater) features Massachusetts-specific guidance on actions users can take to reduce their water use. It features tools and outreach material that can be easily downloaded and shared.

Also in FY2020, in cooperation with the MA Division of Ecological Restoration and with outreach to water suppliers, staff developed a best management practices guidance document on managing and analyzing water use data for effective rate setting and water conservation program planning.



WATER NEEDS FORECASTS

WRAP staff works with public water suppliers to develop 15- to 20-year water needs forecasts, using a methodology approved by the Water Resources Commission. The forecasts are used by suppliers in applying for Water Management Act (WMA) permits and in long-range planning.

In FY2020, WRAP staff consulted with MassDEP and thirteen public water suppliers in seven river basins (Boston Harbor, Buzzards Bay, Charles, Concord, Ipswich, Islands, and Merrimack basins) to review, revise, or prepare new water needs forecasts.

-

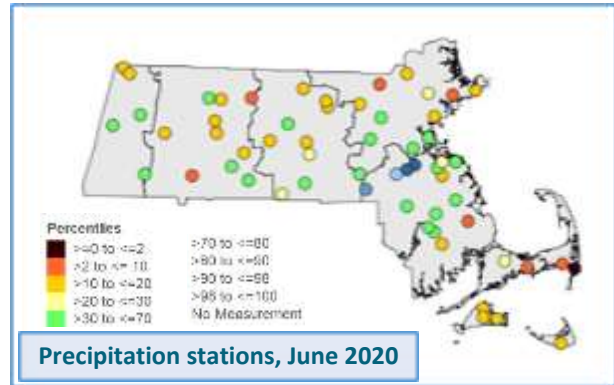


FY2020 WRAP HIGHLIGHTS

USGS COOPERATIVE PROGRAM

The U.S. Geological Survey and the state have had a water resources partnership since 1904, when the state's first modern stream gage was installed in the Connecticut River. The program currently maintains 148 monitoring stations providing data on:

- Streamflow— 58 real-time gages
- Groundwater— 37 manual and 44 automated gages
- Precipitation— 5 gages
- Tidal—3 gages
- Soil moisture—1 gage



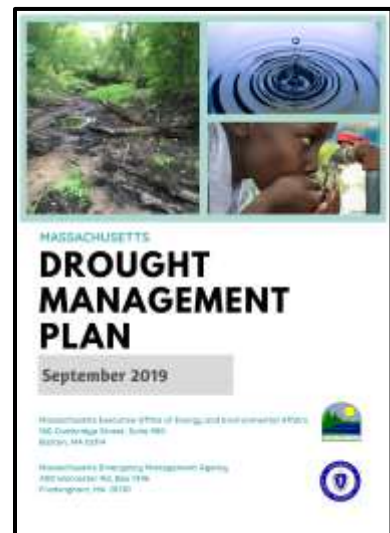
In FY2020, in coordination with USGS and the State Geologist, staff completed the last phase of a 3-year USGS grant to replace 34 groundwater monitoring wells. USGS and staff also started to adjust and transfer historical data from original to replacement wells, allowing for the continuation of records.

HYDROLOGIC CONDITIONS, DROUGHT MONITORING AND PRECIPITATION PROGRAM

WRAP staff monitors and analyzes water conditions monthly and produces a [Hydrologic Conditions Report](#), covering precipitation trends, rainfall deficits, river conditions, groundwater levels, and reservoir, lake, pond, and other impoundment levels. Staff uses these data to monitor for a potentially developing drought or the deterioration of conditions during droughts and to advise the state's Drought Management Task Force (DMTF).

Of the hydrologic monitoring networks, WRAP staff manages the precipitation network, which has been in operation since 1956 and currently provides data from 50 active stations in Massachusetts. Other networks are operated cooperatively with the USGS. These data are critical to drought monitoring.

In FY2020, WRAP staff, working with other agencies, completed a comprehensive review and update of the [Massachusetts Drought Management Plan](#), including the drought indices, methods used to determine drought, communication, and state and local actions to prepare for and respond to drought.



Also in FY2020, WRC staff began work with the Northeast Regional Climate Center at Cornell University to develop a Drought Dashboard – a web-based tool to provide data and maps of drought indices, hydrologic conditions, and drought monitoring. This tool will enhance data processing capabilities and analyses for DMTF meetings.

CONTACT INFORMATION

LAKES AND PONDS PROGRAM STAFF

Vanessa Curran, Water Resources Scientist

617-626-1388

vanessa.curran@mass.gov

Tom Flannery, Aquatic Ecologist

617-626-4975

tom.flannery2@mass.gov

Jim Straub, Program Coordinator

617-626-1411

jim.straub@mass.gov

WATER RESOURCES ASSESSMENT AND PLANNING STAFF

Michele Drury, Assistant Director (retired Oct 2019)

617-626-1366

michele.drury@mass.gov

Sara Cohen, Water Resources Specialist

617-626-1374

sara.cohen@mass.gov

Erin Graham, Environmental Engineer

617-626-1426

erin.graham@mass.gov

Marilyn McCrory, Regional Planner

617-626-1423

marilyn.mccrory@mass.gov

Viki Zoltay, Hydrologist

617-626-1384

viki.zoltay@mass.gov

FLOOD HAZARD MANAGEMENT PROGRAM STAFF

Joy Duperault, Program Director

617-626-1406

joy.duperault@mass.gov

Eric Carlson, Environmental Engineer

617-626-1362

eric.carlson@mass.gov

DIRECTORS

John Scannell, Director

Division of Water Supply Protection

617-626-4987

john.m.scannell@mass.gov

Anne Carroll, Director

Office of Water Resources

617-626-1395

anne.carroll@mass.gov

DEPARTMENT INFORMATION



Massachusetts Department
of Conservation and
Recreation

Division of Water Supply
Protection

Office of Water Resources
Tel 617-626-1395

www.mass.gov/service-details/dcr-office-of-water-resources

Photo credits:

Cover: No. Reservoir, Winchester, June 2020. E. Graham
p. 2: A-1 Reservoir, Westborough. V. Curran
p. 2: Cleveland Pond. T. Flannery
p. 3, Whitehall Pond & Connecticut River. T. Flannery
p. 7, Quabbin Reservoir, Cliff Read

APPENDIX A LIST OF FY20 SERVICES PROVIDED AND LOCATIONS

| Flood Hazard Management Program | |
|--|------------------------------------|
| City or Town | Service Provided |
| Amherst | Meeting |
| Abington | Technical Assistance/Meeting |
| Acton | Technical Assistance/Meeting |
| Adams | Community Assistance Visit/Contact |
| Amesbury | Technical Assistance/Meeting |
| Amherst | Technical Assistance/Meeting |
| Andover | Technical Assistance/Meeting |
| Aquinnah | Technical Assistance/Meeting |
| Arlington | Technical Assistance/Meeting |
| Ashland | Community Assistance Visit/Contact |
| Ashland | Technical Assistance/Meeting |
| Athol | Technical Assistance/Meeting |
| Attleboro | Technical Assistance/Meeting |
| Auburn | Technical Assistance/Meeting |
| Avon | Technical Assistance/Meeting |
| Barnstable | Community Assistance Visit/Contact |
| Barnstable County | Technical Assistance/Meeting |
| Becket | Technical Assistance/Meeting |
| Bedford | Technical Assistance/Meeting |
| Bellingham | Technical Assistance/Meeting |
| Belmont | Technical Assistance/Meeting |
| Beverly | Technical Assistance/Meeting |
| Billerica | Technical Assistance/Meeting |
| Bolton | Technical Assistance/Meeting |
| Boston | Technical Assistance/Meeting |
| Bourne | Technical Assistance/Meeting |
| Braintree | Technical Assistance/Meeting |
| Brewster | Technical Assistance/Meeting |
| Bridgewater | Technical Assistance/Meeting |
| Brimfield | Technical Assistance/Meeting |
| Brockton | Community Assistance Visit/Contact |
| Brockton | Technical Assistance/Meeting |
| Burlington | Technical Assistance/Meeting |
| Cambridge | Technical Assistance/Meeting |
| Canton | Community Assistance Visit/Contact |
| Canton | Technical Assistance/Meeting |
| Carlisle | Technical Assistance/Meeting |
| Charlton | Technical Assistance/Meeting |
| Chatham | Technical Assistance/Meeting |
| Chelmsford | Technical Assistance/Meeting |
| Chesterfield | Technical Assistance/Meeting |
| Chicopee | Community Assistance Visit/Contact |
| Cohasset | Technical Assistance/Meeting |
| Cummington | Technical Assistance/Meeting |
| Dartmouth | Technical Assistance/Meeting |
| Dedham | Technical Assistance/Meeting |
| Dennis | Technical Assistance/Meeting |
| Dighton | Technical Assistance/Meeting |
| Dover | Community Assistance Visit/Contact |

| | |
|------------------|------------------------------------|
| Duxbury | Technical Assistance/Meeting |
| East Brookfield | Technical Assistance/Meeting |
| Eastham | Technical Assistance/Meeting |
| Easthampton | Technical Assistance/Meeting |
| Easton | Community Assistance Visit/Contact |
| Easton | Technical Assistance/Meeting |
| Edgartown | Technical Assistance/Meeting |
| Everett | Technical Assistance/Meeting |
| Fairhaven | Technical Assistance/Meeting |
| Fall River | Community Assistance Visit/Contact |
| Falmouth | Technical Assistance/Meeting |
| Fitchburg | Technical Assistance/Meeting |
| Foxborough | Technical Assistance/Meeting |
| Framingham | Community Assistance Visit/Contact |
| Framingham | Technical Assistance/Meeting |
| Franklin | Technical Assistance/Meeting |
| Georgetown | Technical Assistance/Meeting |
| Gloucester | Technical Assistance/Meeting |
| Goshen | Technical Assistance/Meeting |
| Gosnold | Technical Assistance/Meeting |
| Granville | Technical Assistance/Meeting |
| Great Barrington | Technical Assistance/Meeting |
| Greenfield | Community Assistance Visit/Contact |
| Greenfield | Technical Assistance/Meeting |
| Groton | Technical Assistance/Meeting |
| Hadley | Technical Assistance/Meeting |
| Harwich | Technical Assistance/Meeting |
| Haverhill | Technical Assistance/Meeting |
| Hingham | Technical Assistance/Meeting |
| Holden | Technical Assistance/Meeting |
| Holland | Technical Assistance/Meeting |
| Holliston | Technical Assistance/Meeting |
| Hopkinton | Technical Assistance/Meeting |
| Hull | Technical Assistance/Meeting |
| Ipswich | Technical Assistance/Meeting |
| Leominster | Technical Assistance/Meeting |
| Lexington | Technical Assistance/Meeting |
| Lowell | Technical Assistance/Meeting |
| Lynn | Community Assistance Visit/Contact |
| Lynn | Technical Assistance/Meeting |
| Malden | Community Assistance Visit/Contact |
| Mansfield | Community Assistance Visit/Contact |
| Mansfield | Technical Assistance/Meeting |
| Marblehead | Technical Assistance/Meeting |
| Marion | Technical Assistance/Meeting |
| Marlborough | Technical Assistance/Meeting |
| Marshfield | Technical Assistance/Meeting |
| Mashpee | Technical Assistance/Meeting |
| Mattapoissett | Technical Assistance/Meeting |
| Middleton | Technical Assistance/Meeting |
| Milford | Community Assistance Visit/Contact |
| Millbury | Technical Assistance/Meeting |

| | |
|--------------------|------------------------------------|
| Monson | Technical Assistance/Meeting |
| Nahant | Technical Assistance/Meeting |
| Nantucket | Technical Assistance/Meeting |
| Natick | Technical Assistance/Meeting |
| Needham | Technical Assistance/Meeting |
| New Bedford | Technical Assistance/Meeting |
| New Marlborough | Technical Assistance/Meeting |
| Newbury | Technical Assistance/Meeting |
| Newburyport | Technical Assistance/Meeting |
| Norfolk | Technical Assistance/Meeting |
| North Adams | Technical Assistance/Meeting |
| North Andover | Technical Assistance/Meeting |
| North Attleborough | Technical Assistance/Meeting |
| North Brookfield | Technical Assistance/Meeting |
| Northampton | Technical Assistance/Meeting |
| Northborough | Technical Assistance/Meeting |
| Norton | Technical Assistance/Meeting |
| Norwell | Technical Assistance/Meeting |
| Norwood | Technical Assistance/Meeting |
| Oak Bluffs | Technical Assistance/Meeting |
| Oakham | Technical Assistance/Meeting |
| Orleans | Technical Assistance/Meeting |
| Pembroke | Technical Assistance/Meeting |
| Pepperell | Technical Assistance/Meeting |
| Plymouth | Community Assistance Visit/Contact |
| Plymouth | Technical Assistance/Meeting |
| Provincetown | Technical Assistance/Meeting |
| Quincy | Technical Assistance/Meeting |
| Reading | Community Assistance Visit/Contact |
| Revere | Technical Assistance/Meeting |
| Rockland | Community Assistance Visit/Contact |
| Rockport | Technical Assistance/Meeting |
| Rowley | Technical Assistance/Meeting |
| Royalston | Technical Assistance/Meeting |
| Salem | Technical Assistance/Meeting |
| Salisbury | Technical Assistance/Meeting |
| Sandwich | Technical Assistance/Meeting |
| Saugus | Technical Assistance/Meeting |
| Scituate | Technical Assistance/Meeting |
| Seekonk | Technical Assistance/Meeting |
| Shutesbury | Technical Assistance/Meeting |
| Somerset | Community Assistance Visit/Contact |
| Somerset | Technical Assistance/Meeting |
| Southwick | Technical Assistance/Meeting |
| Stockbridge | Community Assistance Visit/Contact |

| | |
|------------------|------------------------------------|
| Stoneham | Technical Assistance/Meeting |
| Stoughton | Community Assistance Visit/Contact |
| Stoughton | Technical Assistance/Meeting |
| Sudbury | Technical Assistance/Meeting |
| Sutton | Technical Assistance/Meeting |
| Swampscott | Technical Assistance/Meeting |
| Swansea | Community Assistance Visit/Contact |
| Swansea | Technical Assistance/Meeting |
| Tewksbury | Technical Assistance/Meeting |
| Tisbury | Technical Assistance/Meeting |
| Topsfield | Technical Assistance/Meeting |
| Townsend | Technical Assistance/Meeting |
| Truro | Technical Assistance/Meeting |
| Tyngsborough | Technical Assistance/Meeting |
| Wakefield | Technical Assistance/Meeting |
| Waltham | Technical Assistance/Meeting |
| Wareham | Technical Assistance/Meeting |
| Wayland | Technical Assistance/Meeting |
| Wellesley | Technical Assistance/Meeting |
| Wellfleet | Technical Assistance/Meeting |
| Wenham | Technical Assistance/Meeting |
| West Boylston | Technical Assistance/Meeting |
| West Bridgewater | Technical Assistance/Meeting |
| West Springfield | Technical Assistance/Meeting |
| West Tisbury | Technical Assistance/Meeting |
| Westfield | Technical Assistance/Meeting |
| Westford | Technical Assistance/Meeting |
| Weston | Technical Assistance/Meeting |
| Westport | Technical Assistance/Meeting |
| Weymouth | Technical Assistance/Meeting |
| Wilmington | Technical Assistance/Meeting |
| Winchendon | Technical Assistance/Meeting |
| Winchester | Technical Assistance/Meeting |
| Windsor | Technical Assistance/Meeting |
| Winthrop | Technical Assistance/Meeting |
| Worcester | Technical Assistance/Meeting |
| Yarmouth | Technical Assistance/Meeting |

APPENDIX A (CONT.) LIST OF FY20 SERVICES PROVIDED AND LOCATIONS

| Lakes and Ponds Program | |
|--------------------------------|---|
| City or Town | Service Provided |
| Boxboro | New England Fishing and Outdoor Expo |
| Concord | Boat Ramp Monitor, Walden Pond |
| Douglas | Boat Ramp Monitor, Wallum Lake |
| Lake Placid, NY | Northeast Aquatic Plant Management Society |
| Lee/Lenox | Boat Ramp Monitor, Laurel Lake |
| Lunenburg | Weed Watcher Training |
| Melrose | Weed Watcher Training |
| Pittsfield | Boat Ramp Monitor Grant, Lake Onota & Pontoosuc |
| Portsmouth, NH | Northeast Aquatic Nuisance Species Panel |
| Spencer | Weed Watcher Training |
| Springfield | Northeast Aquatic Nuisance Species panel |
| Sturbridge | Weed Watcher Training |
| Stockbridge | Boat Ramp Monitor Grant, Stockbridge Bowl |
| Tolland | Weed Watcher Training |
| Townsend | Weed Watcher Training |
| Westfield | Boat Ramp Monitor, Pequot Pond |
| West Springfield | Springfield Sportsman's Show |

| Water Resources Assessment and Planning Program | |
|--|---|
| City or Town | Service Provided |
| Auburn | Interbasin Transfer Act Pre-Application |
| Brockton (Aquaria) | Interbasin Transfer Act Review of Monitoring Conditions |
| Burlington | Interbasin Transfer Act Pre-Application |
| Chelmsford, North Chelmsford Water District | Water Needs Forecast review, Concord River Basin |
| Danvers/Middleton | Water Needs Forecast, Ipswich River Basin |
| Dover | Water Needs Forecast review, Charles River Basin |
| Foxborough | Interbasin Transfer Act Review of Monitoring Conditions |
| Holliston | Water Needs Forecast review, Charles River Basin |
| Hudson | Water Needs Forecast review, Concord River Basin |
| Leicester | Interbasin Transfer Act Applicability Review |
| Marlborough | Water Needs Forecast review, Concord River Basin |
| Merrimac | Water Needs Forecast review, Merrimack River Basin |
| Millis | Water Needs Forecast review, Charles River Basin |
| Nantucket | Water Needs Forecast review, Islands Basin |
| North Reading | Interbasin Transfer Act Pre-Application |
| Plymouth (Pine Hills) | Water Needs Forecast, South Coastal Basin |
| Walpole | Water Needs Forecast, Boston Harbor Basin |
| Wareham (Onset) | Water Needs Forecast review, Buzzards Bay Basin |
| Wayland | Water Needs Forecast review, Concord River Basin |
| Weymouth | USGS Well Replacement |

APPENDIX B LIST OF LAKES AND PONDS PROJECTS AND LOCATIONS

| City or Town | Location | Waterbody | Service Provided |
|--------------------|--------------------------------------|---|---|
| Abington | Ames Nowell State Park | Cleveland Pond | Aquatic Plant Management |
| Andover | Harold Parker State Forest | Field Pond | Aquatic Plant Management |
| Becket | October Mountain State Forest | Buckley Dunton Lake | Aquatic Plant Management |
| Clarksburg | Clarksburg State Park | Mausert's Pond | Aquatic Plant Management |
| Clinton | Wachusett Reservoir Watershed | South Meadow Pond System | Aquatic Plant Management |
| East Otis | Tolland State Forest | Otis Reservoir & Big Pond | Aquatic Plant Survey & Mapping |
| Framingham | DCR Water Supply Protection | Stearns Reservoir | Aquatic Plant Management |
| Georgetown | DFG Office of Fishing & Boating site | Rock Pond | Aquatic Plant Management |
| Groton & Pepperell | J. Harry Rich State Forest | Nashua River | Aquatic Plant Management |
| Marshfield | Town of Marshfield | Marshfield Ponds | Aquatic Plant Management |
| Natick | Lake Cochituate State Park | Lake Cochituate & Fiske Pond | Aquatic Plant Management |
| Newton | Charles River Reservation | Charles River Lakes District | Aquatic Plant Management |
| Newton | Charles River Reservation | Ware's Cove, Charles River, Lower Basin | Aquatic Plant Management |
| Norfolk | Bristol-Blake State Reservation | Stony Brook Pond | Aquatic Plant Management |
| Somerville | Mystic River Reservation | Mystic Lakes & River | Aquatic Plant Management |
| Spencer | Spencer State Forest | Thompson Pond | Aquatic Plant Management |
| Topsfield | Willowdale State Forest | Hood Pond | Aquatic Plant Management |
| Westminster | Leominster State Forest | Crow Hill & Paradise Ponds | Aquatic Plant Management |
| Ashby | Willard Brook State Forest | Damon Pond | Beach Bacteria Reduction Pilot Project |
| Concord | Walden Pond State Reservation | Walden Pond | Erosion Control Plans & Permits |
| Douglas | Douglas State Forest | Wallum Lake | Stormwater & Erosion Control Design & Permitting |
| East Taunton | Massasoit State Park | Middle Pond | Aquatic Plant Management & Beach Restoration Permitting |
| East Otis | Tolland State Forest | Otis Reservoir | Erosion Control Construction at Camping Beach |
| Framingham | DCR Water Supply Protection | Stearns Reservoir | Boat Ramp Permitting |
| Natick | Cochituate State Park | Lake Cochituate & Fiske Pond | Baseline Water Quality Monitoring |
| North Adams | Natural Bridge State Park | Natural Bridge Pond | Sediment Removal, Phase II |
| Newburyport | Maudslay State Park | Flowering Pond | Post-dredging Monitoring |
| Plymouth | Myles Standish State Forest | Fearing Pond | Construction of Stormwater Control Measures |
| Multiple Locations | Multiple Locations | Multiple Beaches | Beach Sand Replacement Permitting |
| Multiple Locations | Multiple Locations | 10 Lakes & Ponds | eDNA Analysis of Lakes at High Risk for Zebra Mussels |
| Cheshire | Town Route 8 | Cheshire Reservoir | Zebra mussel dive inspection |
| Egremont | | Prospect Lake | Zebra mussel dive inspection |
| Great Barrington | | Lake Mansfield | Zebra mussel dive inspection |
| Lee | Town Route 20 | Laurel Lake | Zebra mussel dive inspection |
| Monterey | DCR Route 57 | Lake Buel | Zebra mussel dive inspection |
| Pittsfield | City - Burbank Park & Hancock Road | Lake Onota & Pontoosuc Lake | Zebra mussel dive inspection |
| Richmond | Town - Beach Road | Richmond Pond | Zebra mussel dive inspection |
| Stockbridge | Town Route 183 | Stockbridge Bowl | Zebra mussel dive inspection |
| Westfield | Hampton Ponds State Park | Pequot Pond | Zebra mussel dive inspection |