

# MassDOT Capital Investment Plan (CIP)

***Draft FY25–29 CIP***

*June 27, 2024  
Public Engagement Presentation*



# Zoom Meeting Controls

2



- Go to Reactions and click “Raise your hand” to be unmuted to speak, or \*9 for calling in



- Ask a question (Alt + H) and share comments



- To show video – Alt + V toggles video off/on



- If you are unable to access the internet or are having technical problems, please call into the meeting at (646) 931-3860, Meeting ID: ### # #### # ####, Passcode: #####



Live Transcript

- Closed captioning automatically generated by Zoom

**If you have trouble with the meeting technology during the presentation, please call**

**(Phone)**



# Meeting Notes and Procedures

3

- **Notification of video recording**

- This virtual public meeting will be recorded. The Massachusetts Department of Transportation may choose to retain and distribute the video, images, audio, and/or chat transcript.
- All parts of this meeting are considered public record.
- By continuing attendance with this virtual public meeting, you are consenting to participate in a recorded event.
- If you are not comfortable being recorded, please turn off your camera and keep your microphone muted, or you may choose to excuse yourself from the meeting.

- **Important notes**

- Your microphone and camera are automatically disabled upon entering the meeting.
- The meeting will be open to questions and answers at the end of the presentation.
- Your feedback is important.

**Unauthorized use or distribution of this material is prohibited without prior consent of the MassDOT Communications Department.**

# Notice of MassDOT's Policy on Diversity and Civil Rights

4

- All MassDOT activities, including public meetings, are free of discrimination.
- MassDOT complies with all federal and state civil rights requirements preventing discrimination based on sex, race, color, ancestry, national origin (limited English proficiency), religion, creed, gender, sexual orientation, gender identity or expression, or veteran's status.
- We welcome the diversity from across our entire service area. If you have any questions or concerns, please visit <https://www.mass.gov/nondiscrimination-in-transportation-program> to reach the Office of Diversity and Civil Rights.

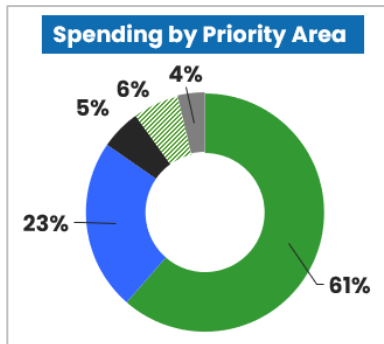
**All questions and comments are welcome and appreciated, however we do request that you refrain from any disrespectful comments.**

# Presentation Highlights

5



- MassDOT's rolling Capital Investment Plan (CIP) guides the planning, construction, and capital maintenance of the transportation system for the next five years.



- Input and feedback about transportation investments help guide the way MassDOT **creates investment strategies, establishes programs, and selects projects** for its CIP.



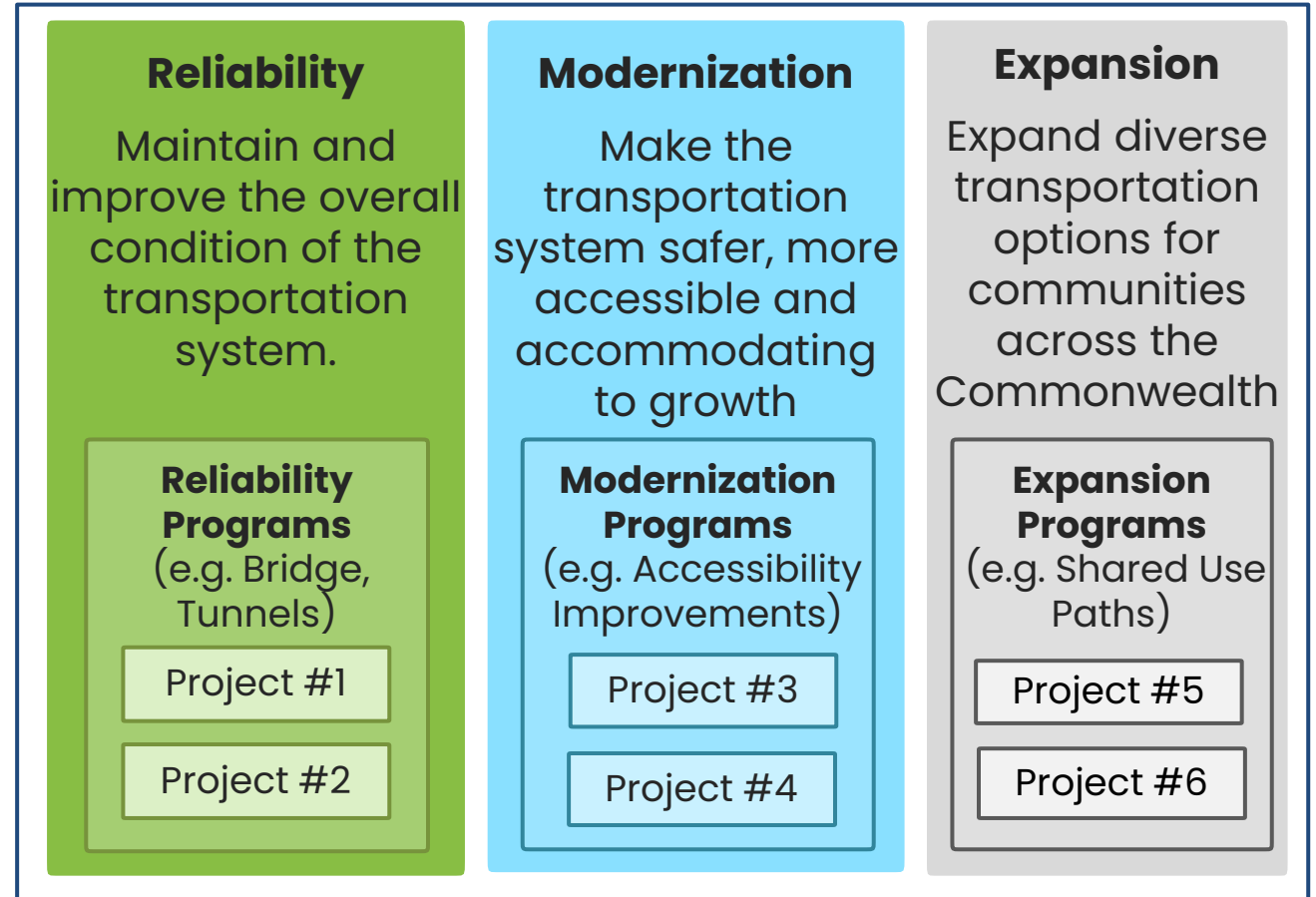
- A draft MassDOT Fiscal Year (FY) 25-29 CIP is available for public review and comment from **June 20** through **July 10**. We hope you'll review the plan and provide feedback!

# MassDOT Capital Investment Plan (CIP) Overview

6

- Rolling five-year plan that funds the planning, construction, and capital maintenance of the transportation system
- Fiscally constrained and reflects planned spending/cash flows
- Includes investments in
  - Roads and bridges
  - Bicycle and pedestrian facilities
  - State-funded transit items
  - State rail network
  - Public use airports
  - MassDOT-wide enterprise services
  - Registry of Motor Vehicles

## CIP Framework



# CIP Funding Sources

7



## Federal Funding Formula Funds

- Federal Highway Reimbursements
- Federal Transit funds
- Federal Aviation Administration funds
- Federal Railroad funds

## Discretionary Funds

- Competitive processes run by federal agencies. Funds included in the CIP after award.



## State Funding Bonds / GANs

- State Bond Cap
- Accelerated Bridge Program Bonds (ABP)
- Next Generation Bridge (NGB) Program Bonds
- Grant Anticipation Notes (GANs)
- Rail Enhancement Program (REP) Bonds



## MassDOT Sources Tolls (pay-go capital)

- Metropolitan Highway System (MHS) pay-go
- Western Turnpike (WT) pay-go
- Tobin Bridge (Tobin) pay-go



## Other Sources

- Municipal and local funds
- Reimbursable and 3<sup>rd</sup> Party funds
- Volkswagen (VW) Diesel Settlement Funds
- Other Commonwealth funds
- Central Artery Tunnel Project Repair and Maintenance Trust Fund (CARM)

# Factors Shaping CIP Development

8

## External Factors

- Ongoing implementation of the Bipartisan Infrastructure Law (federal funding)
- Availability of Commonwealth-provided funding and toll revenues
- Evolving travel demands, conditions, and needs
- Partner agency planning processes
- Feedback on past CIPs
- Feedback collected during CIP engagement

## Internal Factors

- Priorities of the Healey-Driscoll Administration
- Development of *Beyond Mobility* statewide long-range plan and other initiatives included in MassDOT@15
- Findings and priorities from MassDOT modal and asset management plans
- Performance measures (MassDOT Tracker)
- Identified process improvements



# CIP Investment Focus Areas

9

## SAFETY

Improve safety for all users and adopt a safe system approach

## CLIMATE STEWARDSHIP

Respond to the climate crisis through a holistic approach that advances carbon-free modes of transportation, electrification, and resilient infrastructure

## ASSET MANAGEMENT

Preserve and modernize assets to support safe and reliable travel

## PARTNERSHIPS WITH MUNICIPALITIES

Support cities and towns in meeting local transportation needs and improving economic competitiveness and quality of life

Advance **SOCIAL AND GEOGRAPHIC EQUITY** across investment areas

# Factors Shaping CIP Development, continued

10

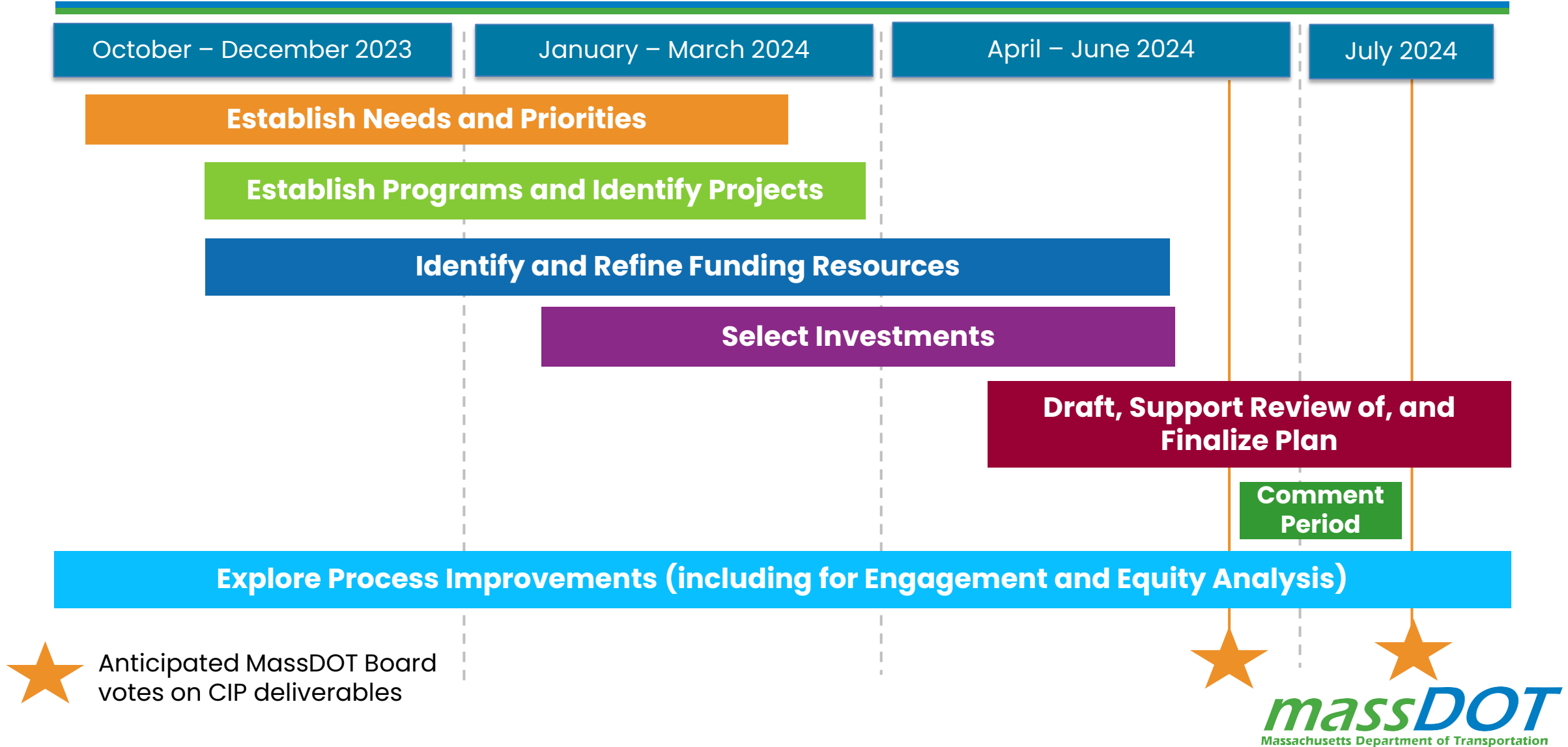
- Examples of factors that shape the set of specific investments included in the CIP, beyond higher-level strategy, include:
  - Asset management systems (for reliability projects)
  - Project selection criteria (for modernization and expansion projects)
  - Project initiation, design, and implementation status
- Partner agency decisions, such as those made by metropolitan planning organizations (MPOs) for their transportation improvement program (TIPs), also influence the CIP
  - TIPs are incorporated into the Massachusetts State Transportation Improvement Program (STIP)

## CIP Components, including State Transportation Improvement Program (STIP) Items

Federally-aided Highway Projects (STIP)  (includes MPO and MassDOT-selected projects)					Chapter 90 funding
					Other Highway (including local aid programs)
State Match for Federally-aided Transit Projects (STIP)					State-funded MBTA projects
RMV	Other Transit	IT	Rail	Aeronautics	Planning and Shared Services

# CIP Development Timeline

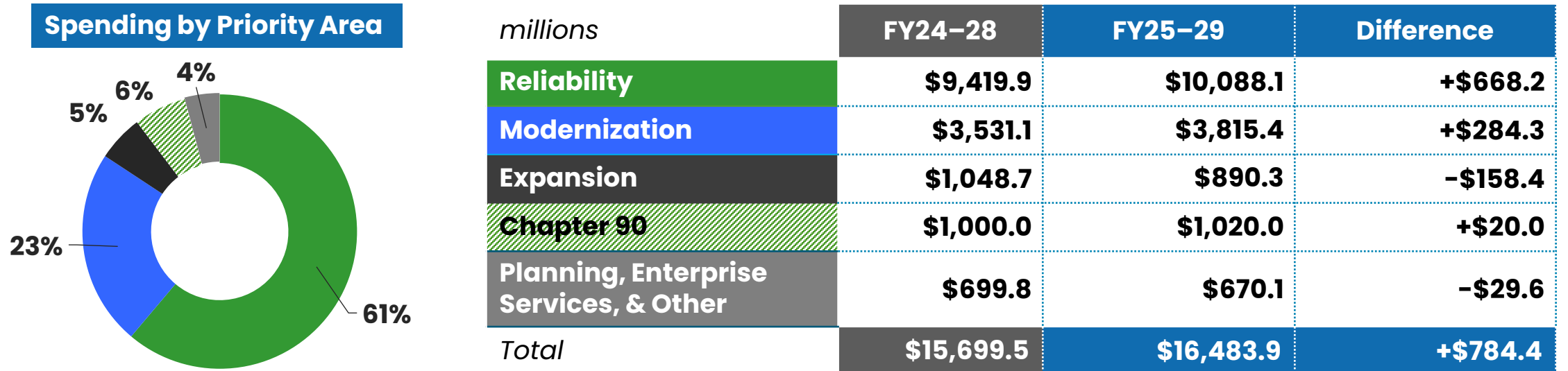
11



# FY25–29 CIP Spending By Priority

12

	Aeronautics	Highway	IT	MBTA	Rail	RMV	Transit	Total FY25–29
Reliability	\$561.7	\$8,873.2	\$45.0	\$67.8	\$288.8	\$ –	\$251.6	\$10,088.1
Modernization	\$15.6	\$2,967.1	\$60.0	\$604.5	\$31.9	\$17.3	\$118.9	\$3,815.4
Expansion	\$ –	\$597.1	\$ –	\$175.0	\$118.3	\$ –	\$ –	\$890.3



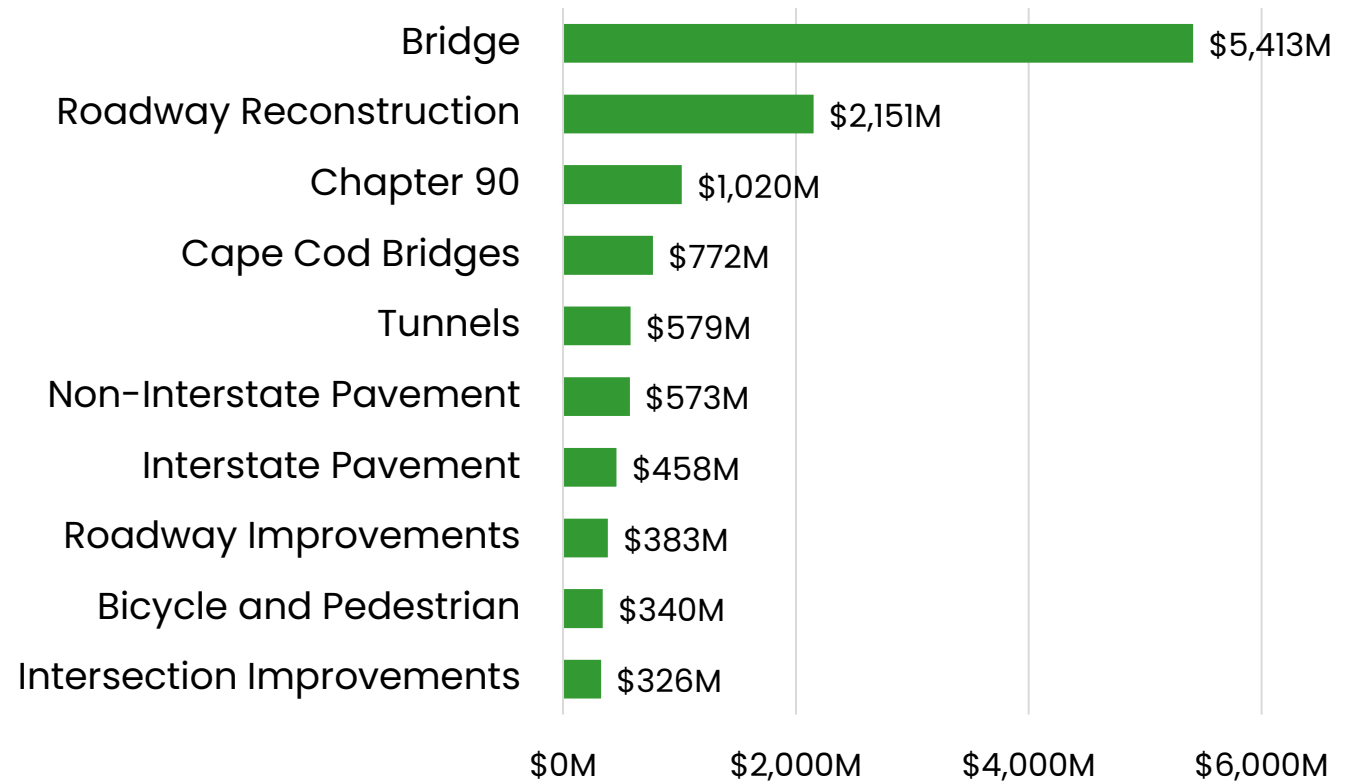
Totals may not sum due to rounding. Data is current as of June 6, 2024, and is subject to change.

# Draft FY 2025–29 CIP Contents

13

- More than 50 investment programs and more than 1,600 individual investments
- New programs for freight, transportation management associations, and water transportation pilot
- **\$847M** in Commonwealth-funded MBTA investments
- Includes **\$269M** in spending supported by federal competitive grant awards

**Top MassDOT CIP Programs by FY25–29 Spending\***  
(\$ millions)



Data subject to change.

\*Chart does not include Commonwealth-funded MBTA investments.

# Spending in Key Focus Areas

14

- **Safety and Asset Management**
  - **\$5.4B** for statewide Bridge program
  - **\$577M** for public use airport improvements
  - **\$144M** for systematic road safety improvements
- **Climate Stewardship**
  - **\$565M** in active transportation support\*
  - **\$439M** in rail investments and **\$370M** in regional transit authority and local transit investments
  - **\$82M** in Highway Resiliency program
  - **\$89M** to provide charging stations near major roads
- **Partnerships with Municipalities**
  - More than **\$1.3B** in grant programs for municipalities

Values are rounded to nearest million. Data is as of June 2024.

\* Includes \$108M from programs for municipalities



Pioneer Valley Transit Authority – Electric Bus



Shared Streets and Spaces Program

# Support for Partnerships with Municipalities

MassDOT’s new Grant Central online portal provides details about programs for municipalities and enhances grant management and customer service capabilities.



Program	FY25–29 Funding
Chapter 90	\$1,020.0 M
Complete Streets	\$75.0 M
Local Bottleneck Reduction	\$27.0 M
Municipal Pavement	\$125.0 M
Municipal Small Bridge	\$75.0 M
Shared Streets and Spaces	\$32.5 M
<b>TOTAL</b>	<b>\$1,354.5 M</b>

Data is as of June 2024.



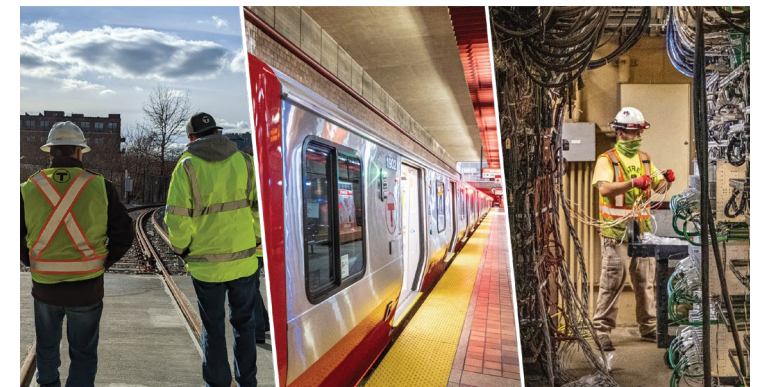
# State-Funded Items for the MBTA

16

- MBTA creates a separate CIP—MassDOT's CIP shows Commonwealth-funded transit investments for the MBTA
- **\$847M** in planned Commonwealth-funded investments for MBTA, primarily funded by Rail Enhancement Program funds
  - **\$62M** for Commuter Rail bi-level coach procurement
  - **\$143M** for South Coast Rail
  - **\$335M** for Red and Orange Line vehicles
  - **\$75M** for other Red and Orange Line infrastructure improvements
  - **\$87M** to match federal Bipartisan Infrastructure Law funding
  - **\$28M** for Water Transportation Pilot Program
  - **\$117M** for other items



South Coast Rail



Red Line Improvements

Values reflect planned FY25-29 spending and are rounded to nearest million. Data is as of June 2024.



# Draft FY25–29 CIP Highlights for Boston Region

17

## Roadway and Bridge

- Boston and Chelsea – Cleaning, Painting, and Repairs on Tobin Bridge – \$99M
- Boston – Allston Multimodal Program – \$82M
- Chelsea – Targeted Safety Improvements and Related Work on Broadway – \$10M
- Gloucester – Bridge Reconstruction – Western Avenue over Blynman Canal – \$25M
- Lynn – Rehabilitation of Essex Street – \$24M
- Newton and Weston – I-90/I-95 Interchange Rehabilitation – \$264M
- Norwood – Intersection Improvements at Route 1 and University Avenue/Everett Street – \$28M
- Somerville – McGrath Boulevard Construction – \$44M
- Wilmington – Bridge Replacement – Butters Row over MBTA – \$14M



Chelsea Downtown Lower Broadway Project



I-90/I-95 Interchange in Newton and Weston

Values reflect planned FY25–29 spending and are rounded to nearest million. Data is as of June 2024.

# Draft FY25–29 CIP Highlights for Boston Region

18

## Climate and Resiliency

- MetroWest RTA – Vehicle and Infrastructure Electrification – \$2M
- Wellesley – Drainage Improvements/Culvert Replacements for Flood Mitigation – \$5M

## Active Transportation

- Revere – State Road Beachmont Connector – \$9M
- Sharon – Safe Routes to School – Cottage Street School Improvements – \$4M

## Air, Rail, and Transit

- Beverly Regional Airport – Reconstruct Runway 16–34 – \$15M
- Cape Ann Transportation Authority – Vehicle Replacement – \$3M
- Framingham Secondary (Rail) – Grade Crossing Repairs and Improvements – \$4M



Cottage Street School in Sharon



Cape Ann Transportation Authority (CATA) bus

Values reflect planned FY25–29 spending and are rounded to nearest million. Data is as of June 2024.



# Draft FY25–29 CIP Highlights for Cape Cod and Islands

19

## Roadway and Bridge

- Bourne – Sandwich – Resurfacing And Related Work On Route 6 – \$11M
- Bourne – Cape Cod Bridges Program – \$772M
- Dennis – Corridor and Streetscape Improvements on Main Street (Route 28) – \$11M
- Nantucket – Intersection Improvements At Milestone Road/Polpis Road/Extension Of 'Sconset Bikepath – \$3M
- Provincetown – Corridor Improvements and Related Work on Shank Painter Road – \$18M



Sagamore Bridge



Nantucket – Poplis Road at Milestone Road

## Climate and Resiliency

- Oak Bluffs – Culvert Replacement on Beach Road at Farm Pond – \$4M
- Cape Cod Regional Transit Authority – Replacement Electric Buses – \$15M

Values reflect planned FY25–29 spending and are rounded to nearest million. Data is as of June 2024.

# Draft FY25–29 CIP Highlights for Cape Cod and Islands

20

## Active Transportation

- Barnstable – Construction of Shared Use Path along Bearse’s Way, Route 28 to Pitchers Way – \$2M
- Bourne – Bourne Rail Trail Construction (Phase 1)– \$4M
- Harwich – Safe Routes to School: Harwich Elementary School Improvements – \$2M



Harwich Elementary School

## Air, Rail, and Transit

- Cape Main (Rail) – Grade Crossing Repairs and Improvements – \$9M
- Martha's Vineyard Airport – Expand and Renovate Terminal Building Phase I and II (Airport) – \$69M
- Nantucket Memorial Airport – Reconstruct Runway 6-24/Stub Taxiways and Airfield Lighting – \$88M
- Vineyard Transit Authority – Vehicle Replacements – \$13 M



Martha's Vineyard Airport Terminal  
(Photo Source Martha's Vineyard Airport)

Values reflect planned FY25–29 spending and are rounded to nearest million. Data is as of June 2024.

# Draft FY25–29 CIP Highlights for Central Massachusetts

21

## Roadway and Bridge

- Athol – Phillipston – Templeton – Bridge Preservation of 8 Bridge Crossings along Route 2 – \$13M
- Auburn – Bridge Replacement, Oxford Street over Kettle Brook – \$18M
- Charlton and Oxford – Route 20 Reconstruction project – \$56M
- Hopkinton and Westborough – I-90/I-495 Interchange – \$303M
- Leominster – Reconstruction/Rehabilitation on Route 12 (Central Street) – \$29M
- Shrewsbury – Intersection and Signal Improvement at US 20 (Hartford Turnpike) at Grafton Street – \$11M

## Climate and Resiliency

- Worcester – Flood Relief on Route 20, Grafton Street (Route 122) Interchange to Flint Pond – \$6M



Charlton and Oxford – Route 20 Reconstruction



Route 20/ Route 122 interchange, Worcester  
(Photo Source: Michael Bonner – MassLive.com)

Values reflect planned FY25–29 spending and are rounded to nearest million. Data is as of June 2024.



# Draft FY25–29 CIP Highlights for Central Massachusetts

22

## Active Transportation

- Fitchburg and Leominster – Twin Cities Rail Trail Reconstruction – \$29M
- Grafton – Safe Routes to School: Millbury Street Improvements – \$3M

## Air, Rail, and Transit

- Montachusett Regional Transit Authority – Bus/Vehicle Replacements – \$2M
- Southbridge Municipal Airport – Transient Apron Reconfiguration/Expansion – \$4M
- Ware River Secondary Line – Grade Crossing Repairs and Improvements – \$11M
- Worcester Regional Transit Authority – Bus/Vehicle Replacements – \$3M



Fitchburg and Leominster: Twin Cities Rail Trail



Worcester Regional Transit Authority Bus

Values reflect planned FY25–29 spending and are rounded to nearest million. Data is as of June 2024.

# Draft FY25–29 CIP Highlights for Northeastern Massachusetts

23

## Roadway and Bridge

- Haverhill – Bridge Replacement – Bridge Street (State Route 125) over the Merrimack River and Bradford Rail Trail – \$130M
- Lowell – Rourke Bridge Replacement – \$256M
- Methuen – Intersection Improvements at Riverside Drive and Burnham Road – \$2M
- North Andover – Corridor improvements on Route 114 – \$40M
- Salisbury – Reconstruction of Route 1 (Lafayette Road) – \$17M
- Westford – Rehabilitation of Boston Road – \$12M

## Climate and Resiliency

- Haverhill – 3 Culvert Replacements on Amesbury Road over tributary of East Meadow River – \$5M



Haverhill – Bridge Replacement – Route 125 over Merrimack River



Lowell – Rourke Bridge Replacement

# Draft FY25–29 CIP Highlights for Northeastern Massachusetts

24

## Active Transportation

- Billerica – Yankee Doodle bike path construction (Phase I) – \$18M
- Dracut – Safe Routes to School: Improvements at George Englesby Elementary School – \$3M
- Lawrence – Lawrence-Manchester Rail Trail – \$30M

## Air, Rail, and Transit

- Lawrence Airport – Reconstruct a Portion of North Ramp \$1M
- Lowell Regional Transit Authority – Vehicle Replacement – \$3M
- Merrimack Valley Regional Transit Authority (MeVa) – Vehicle Replacements – \$2M
- Statewide – Rail Grade crossings (FHWA Section 130) program – \$32 M



Lowell Street Bridge – Lawrence- Manchester Rail Trail Corridor



Lowell Regional Transit Authority Bus

Values reflect planned FY25–29 spending and are rounded to nearest million. Data is as of June 2024.



# Draft FY25–29 CIP Highlights for Southeastern Massachusetts

25

## Roadway and Bridge

- Abington – Intersection Improvements at Hancock Street and Chestnut Street – \$5M
- Duxbury – Bridge Replacement, Powder Point Avenue Over Duxbury Bay – \$37M
- Fall River – Corridor Improvements on Route 79/Davol Street – \$51M
- Mattapoisett – Marion – Resurfacing And Related Work on I-195 – \$10M
- New Bedford – Route I-195 to Route 18 Interchange Rehabilitation – \$340M
- Stoughton – Intersection Improvements at Central Street, Canton Street and Tosca Drive – \$4M
- Taunton – Interchange Improvements at Routes 24 and 140 – \$77M



Fall River – Route 79 / Davol Street



Abington: Hancock Street / Chestnut Street Intersection

Values reflect planned FY25–29 spending and are rounded to nearest million. Data is as of June 2024.

# Draft FY25–29 CIP Highlights for Southeastern Massachusetts

26

## Climate and Resiliency

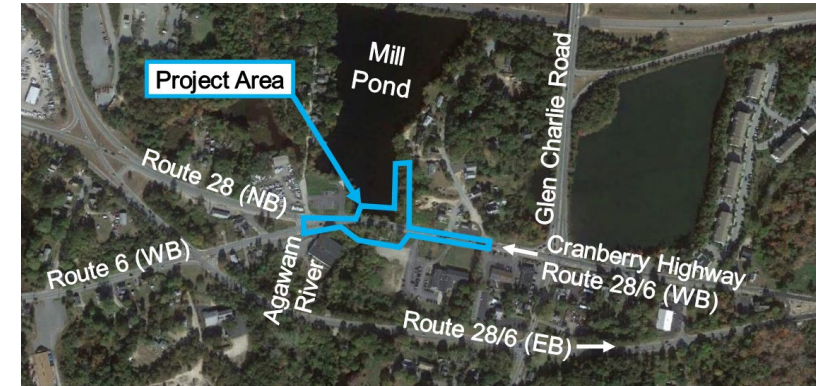
- Southeastern Regional Transit Authority – Replacement 35-ft Electric Buses – \$6M
- Wareham – Culvert and Dam Replacement on Cranberry Highway and Mill Pond Dam – \$44M

## Active Transportation

- Fairhaven – Leroy Wood Elementary School Improvements (Safe Routes to School) – \$2M
- Marion – Shared Use Path Construction (Phase 1) – \$6M

## Air, Rail and Transit

- Brockton Area Transit – Maintenance Facility Renovations – \$2M
- Middleboro Subdivision (Rail) – Bridge Repairs and Replacements – \$2M
- Plymouth Airport – Extension of Runway 6-24 – \$5M



Wareham-Cranberry Highway and Mill Pond Dam



Plymouth Municipal Airport

Values reflect planned FY25–29 spending and are rounded to nearest million. Data is as of June 2024.



# Draft FY25–29 CIP Highlights for Western Massachusetts

27

## Roadway and Bridge

- Bernardston – Bridge Replacement – Route 10 over Fall River and over I-91 – \$32M
- Chicopee – Bridge Replacement – I-391 over (Route 116) Chicopee Street – \$80M
- Holyoke – Intersection Improvements at Beech Street, Resnic Boulevard, and West Franklin Street – \$6M
- Lee – Intersection Improvements at Park Street and Main Street (Route 20) – \$4M
- North Adams – Bridge Replacement – Route 2 over South Branch of the Hoosic River and Route 8 – \$37M
- Pittsfield – Reconstruction of East Street (Route 9) – \$13M
- Springfield – Reconstruction of Sumner Avenue at Dickinson Street and Belmont Avenue (The "X") – \$25M
- Williamstown – Intersection Improvements at Route 7 and Route 43 – \$4M



The "X" in Springfield



Route 7 and Route 43 in Williamstown

Values reflect planned FY25–29 spending and are rounded to nearest million. Data is as of June 2024.

# Draft FY25–29 CIP Highlights for Western Massachusetts

28

## Climate and Resiliency

- Pioneer Valley Transit Authority – Replacement Electric Buses – \$11M
- Stockbridge – Culvert Replacement on Route 7 over Kampoosa Brook – \$2M

## Active Transportation

- Agawam – Safe Routes to School – Robinson Park Elementary School Improvements – \$3M
- Southampton – Greenway Rail Trail Construction – \$10M

## Air and Transit

- Franklin Regional Transit Authority – Vehicle Purchases – \$2M
- Pioneer Valley Transit Authority – Cottage Street Facility Improvements – \$16M
- Westover – Reconstruct Taxiway "S" and "P" with New LED Lighting/Signing, Phase 2 – Construction – \$6M



Southampton – Greenway Rail Trail – Railroad Bridge Over Gunn Road (Photo Source: Town of Southampton)

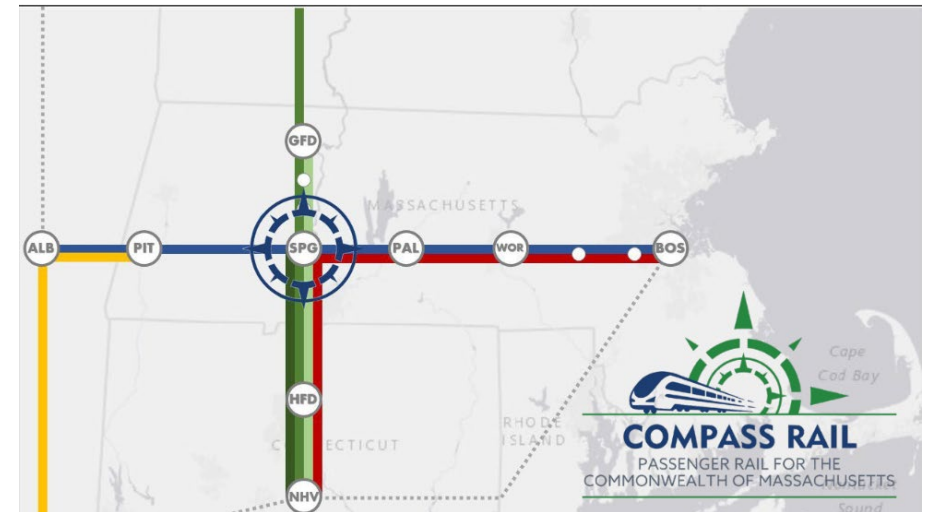


Pioneer Valley Transit Authority Electric Bus

# Draft FY 25–29 CIP: Compass Rail Highlights

29

- Compass Rail represents a vision for intercity passenger rail across Massachusetts and beyond
  - Includes West-East and North-South services
- The draft FY25–29 CIP includes **\$122M** for specific investments for West-East Service
  - Track improvements between Springfield and Worcester (Inland Route)
  - Palmer Station planning and design
  - Pittsfield Track capacity improvements
  - Springfield track reconfiguration (preliminary engineering and environmental work)
  - Planning for additional train service connecting Boston and Albany, NY through Springfield
- Other investments that support Compass Rail are integrated with MassDOT's Rail programs



Compass Rail

Values reflect planned FY25–29 spending and are rounded to nearest million. Data is as of June 2024.



# Draft CIP Document

30

- Available as **PDF** and **ESRI StoryMap** at **mass.gov/cip**
- **Main document** describes what the CIP is, how it is developed, and planned FY25–29 investments
- **Appendix A** lists CIP projects by MassDOT Division with high-level spending details
- **Appendix B** describes CIP investment programs
- **Future document updates** will include equity analysis results and will reflect any changes in spending since the draft release

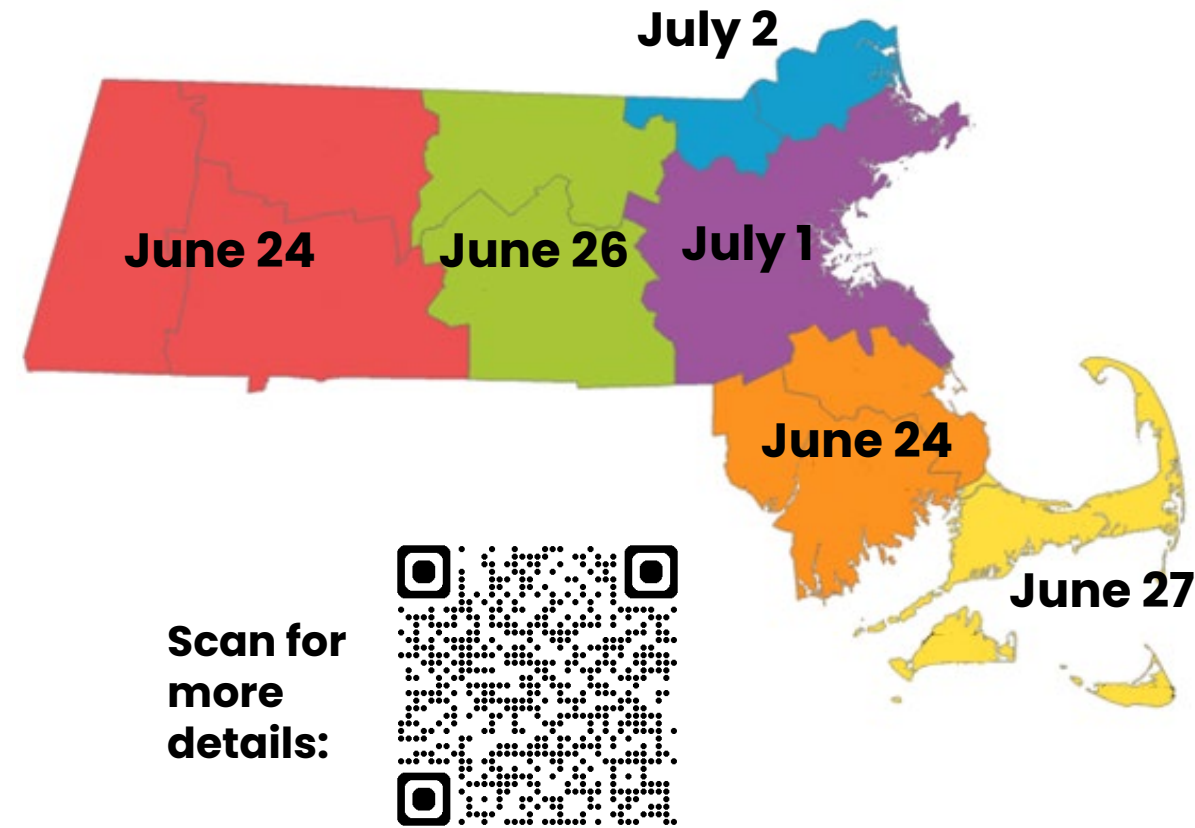


# Public Engagement Activities

31

- Between **June 20** and **July 10**:
  - Draft CIP is available at [mass.gov/cip](https://mass.gov/cip)
  - Legislative briefing on **June 24** and public meetings from **June 24** to **July 2**
  - Coordination with MPOs and others to share details via social media and email
  - Comments accepted via email ([masscip@state.ma.us](mailto:masscip@state.ma.us)), letter, or web map-based comment tool
- After **July 10**:
  - MassDOT shares comments and proposed changes shared with MassDOT Board of Directors, and requests approval of final CIP at **July 17** meeting

## CIP Public Meeting Dates







# How MassDOT Uses CIP Feedback

33

## PROJECTS

- Comments on **projects planned or underway (in the CIP)** are shared with MassDOT Divisions to support project development and implementation
- Comments on **projects not yet included in the CIP** are also shared across Divisions to indicate the level of public interest in the project

## PROGRAMS AND PRIORITIES

- Comments about **investment priorities** and **CIP programs** shape ongoing and future transportation investment decisions

## DEVELOPMENT PROCESS

- Comments about the **CIP process** can inform
  - How MassDOT approaches investment decisions
  - How we engage Massachusetts residents and organizations about the CIP

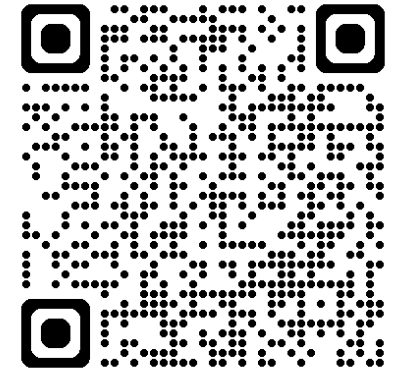
# Massachusetts Travel Study

34

- MassDOT is collecting information about daily transportation habits to understand how roads, highways, transit, bike lanes, and sidewalks are used today, and how they can be improved in the future.
- Invited households have been selected at random from throughout Massachusetts.
- **Has your household received an invitation to the Massachusetts Travel Survey? Please participate!**
  - Sign up for the rMove app or respond online or via phone.
  - Your household will receive one or more gift cards for participating.
  - Check out the Massachusetts Travel Study website for answers to your questions.



Scan for  
more  
details:



# Question and Answer Procedures— Virtual Attendees

35



- “Raise your hand” to be unmuted for verbal questions; \*9 for attendees calling into the meeting.



- To ask a question via phone, dial \*9 and the moderator will call out the last 4-digits of your phone number and unmute your audio when it is your turn.



- Submit your questions and comments using the Q&A button (Alt + H).



- Please state your name before your question.



- Please share only 1 question or comment at a time, limited to 2 minutes, to allow others to participate.

**All questions and comments are subject to disclosure for public records.  
Please use these functions for project related business only.**

# Question and Answer Procedures— In-Person Attendees

36



- Use the provided microphone and please line up three (3) at a time to allow for the virtual audience to participate.



- Please state your name before your question or comment.



- Please share only 1 question or comment at a time, limited to 2 minutes, to allow others to participate.

**All questions and comments are subject to disclosure for public records.**

# Thank You!

