



FY 23 LANDSCAPE PARTNERSHIP GRANT PROGRAM

JANUARY GRANT WORKSHOP 2023

**Executive Office of
Energy and Environmental Affairs
Division of Conservation Services**

Program Goals



- ❑ To protect contiguous, large-scale landscapes necessary to sustain the integrity and resiliency of ecosystems and viability of local farms and forest economies
- ❑ To enable projects that stretch beyond the scope of other state grant programs, standard spheres of operation, and involve cooperation of multiple actors
- ❑ To support the Executive Order 569, which calls for state government to adapt to climate change and build a more resilient Commonwealth

Program Focus

- ❑ Conservation of contiguous land and working landscapes
- ❑ Important natural resources
- ❑ Municipal involvement
- ❑ Partnerships
- ❑ Public access
- ❑ Stewardship
- ❑ Climate change mitigation and resiliency



Girouard CR, Winchendon

Eligible Applicants

Each application must include at minimum two partners from at least two of the following categories:

- ❑ Municipalities – conservation or agricultural commissions, or municipal water departments
- ❑ Non-profit public water suppliers or water or fire districts
- ❑ Environmental non-profit 501(c)3 organizations
- ❑ State agencies: Departments of Fish and Game (DFG), Agricultural Resources (MDAR), Conservation and Recreation (DCR)
- ❑ Federal agencies – Department of the Interior and US Department of Agriculture (but may not receive reimbursement)
- ❑ Municipal park and recreation departments**

*** if seeking to purchase land for a park or playground.*

Eligible Projects



- ❑ Purchase of:
 - ❑ Fee simple; open space, forestry, agriculture, or water supply protection
 - ❑ Conservation Restriction
 - ❑ Agricultural Preservation Restriction
 - ❑ Watershed Preservation Restriction

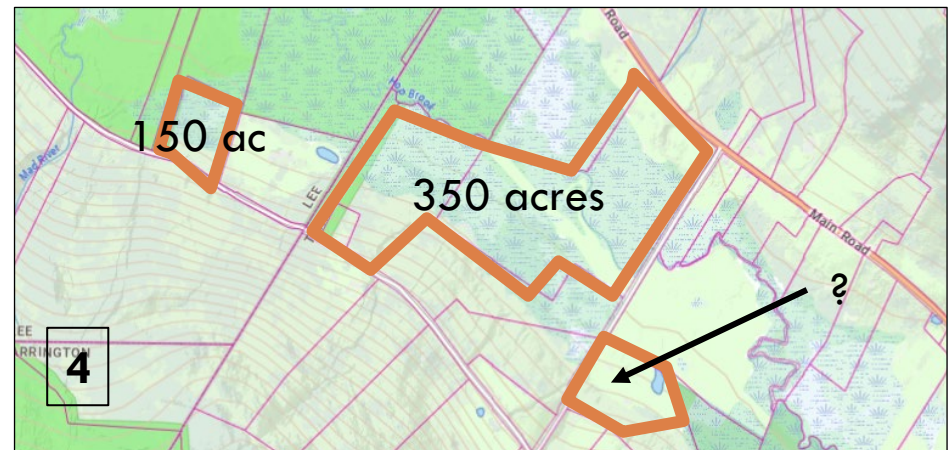
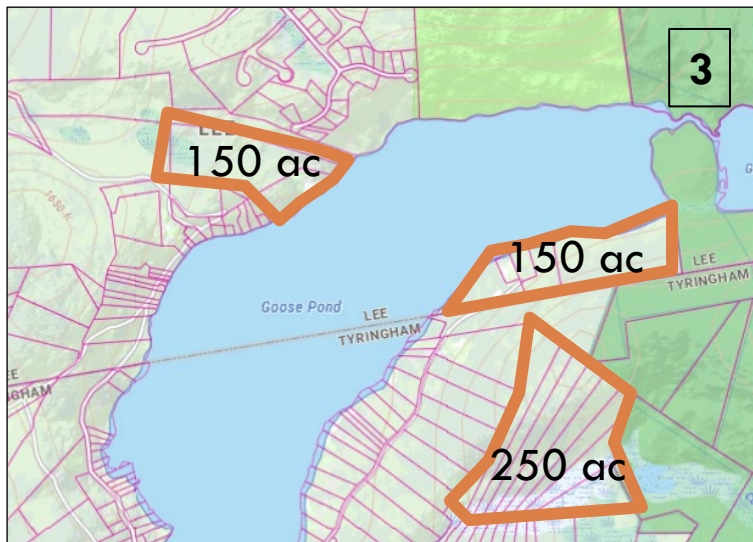
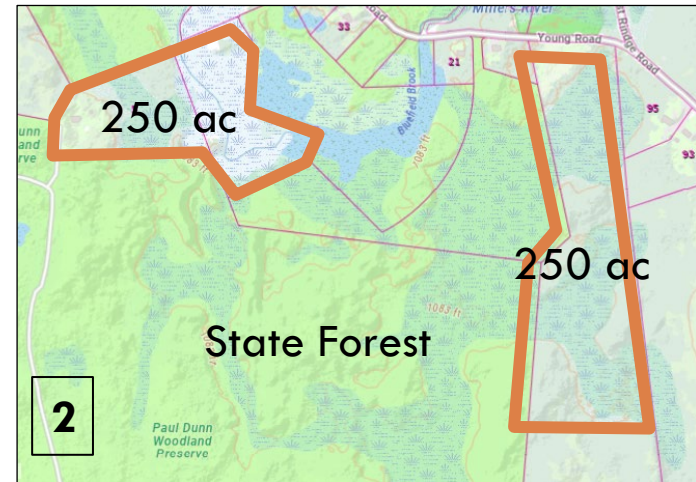
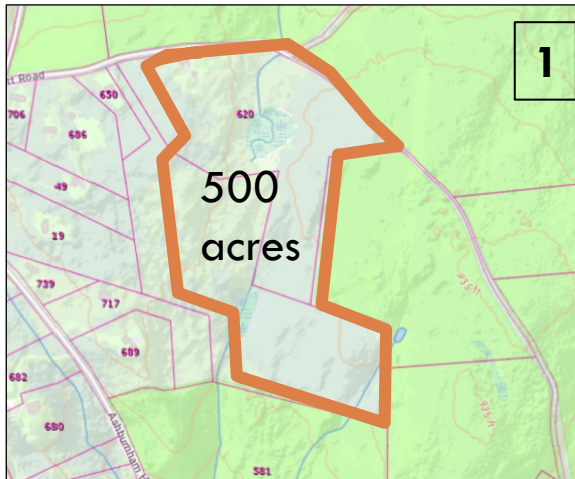
- ❑ Purchase and/or construction of a local park or playground (towns with a population of 7,000 or below)

Eligible Projects

Counties	Min. Project Acreage
Berkshire, Franklin, Worcester	500
Hampden	300
Bristol, Hampshire, Plymouth	250
Essex	200
Barnstable, Dukes, Middlesex, Nantucket, Norfolk, Suffolk	100

Projects adjacent to protected open space and/or that are not transected by roads are prioritized. Parcels separated by minimally traveled roads and/or connected are by wildlife passages will be considered for inclusion at EEAs discretion.

Eligible Project Configurations



Ineligible Projects

- Property that is already permanently protected
- Property in which eligible applicants (or a 501c3) already hold an interest (fee or CR). **See bid for specific exceptions.*
- Property located in EOHED designated Priority Development Area
- This is not a comprehensive list – always call or email if you aren't sure

Funding

- Up to 50% reimbursement
- Maximum award: \$1,250,000
- Funding available in FY23, FY24, FY25
- Project contracts can be 1 or 2 years. May **not** request reimbursement for more than 50% of costs in a given fiscal year.

Eligible project costs include:

- Fee, CR/APR/WPR purchase
- Title research & certification
- Recording fees
- Survey or plan of land
- Playground development (if part of project)
- Forest Management Plan
- Appraisal (if completed **during** the contract period)
- Baseline Documentation Report (up to \$1,500 per BDR)

Eligible Match



- Municipal funding (e.g., land, open space, CPA, drinking water, or agricultural accounts).
- Non-profit accounts
- State agency acquisition funds (DFW, DFG)
- Land gifts including negotiated bargain sale value of parcels
- Private foundation or federal grants
- Other non-state funds approved by EEA

Grant Requirements

- Public access:
 - ▣ Some portion of property must be accessible
 - ▣ *All* parcels acquired in fee must have public access
- Working lands:
 - ▣ Projects are encouraged to include working lands (active farming or forestry)
- Donated parcels where the value is counted toward partner's project costs (i.e. "match parcels" – MUST close by end of Fiscal Year reflected in budget)
- See bid for other specific project requirements (e.g. parks/playgrounds)

Project Terms

- ❑ Municipalities, water suppliers, and non-profits will receive grant contracts; state agencies will receive ISAs or capital allocations
- ❑ Reimbursements for grantees with a contract require *documented payment* (canceled check or wire transfer statement) **or** Treasurers Statement.
- ❑ All project parcels must have certified clear title (CRs – must demonstrate no liens, mortgages etc.)
- ❑ Recorded survey plan required.

Appraisal Reports

REQUIRED for ALL project parcels for purchase and ALL project parcels intended as “match”. May not be older than 1 year at the time of the grant deadline.

Parcels to be purchased with grant funds: Self-contained full narrative appraisal, limited or restricted use appraisal, or contracted market analysis *based upon estimated value*.

Review page 7 of the bid document for appraisal deadlines.

Project Evaluation

100 point rating system

Local support and municipal participation (5 pts)

Project quality (95 pts)

- ▣ Size
- ▣ Biodiversity
- ▣ Climate change resilience
- ▣ Connectivity and opportunity to catalyze additional protection
- ▣ Water resources
- ▣ Working lands
- ▣ Recreation
- ▣ Stewardship capacity
- ▣ Project readiness

Community Compact (2 bonus points)

Grant Application

An application includes the following:

- ▣ Application
- ▣ Appraisal(s)
- ▣ Project narrative
- ▣ Budget
- ▣ Maps
- ▣ MHC and NHESP letters (or request for letters)
- ▣ Letters authorizing grant application
- ▣ Required municipal vote(s) – may include a draft if pending.
- ▣ Documentation of project quality as needed
- ▣ Draft CR/APR/WPR (as applicable)

Timeline & Next Steps

- **Deadline: Tuesday April 18, 2023**
- Site visits scheduled by DCS Staff: April/May
- Grant recommendations & awards
- Secure municipal votes as necessary
- Execute contracts
- Submit CR(s) to DCS for review/preliminary approvals
- Pursue due diligence (title, survey, etc.)
- Purchase property
- Complete project and submit for reimbursement

**Timeline
will be
project
specific.**

Grant Contact



Vanessa Farny
(857) 330-1978
vanessa.farny@mass.gov
www.mass.gov/eea/dcs-grants

Questions?

