



FY 27 EEA GREENING THE GATEWAY CITIES GRANTS

Implementation & Partnership Grants

May 11th, 2026

Greening the Gateway Cities Program

A collaborative program between the Executive Office of Environment & Energy Affairs (EEA) and the Department of Conservation & Recreation Urban & Community Forestry Program (DCR).



EEA GGCP Tree Planting Grants

Collaborative grant programs focused on increasing urban tree canopy and community outreach to bolster the GGCP and promote urban forestry.



Grant Administrator: Hilary Parasmio
EEA Tree Planting Program Manager

Field & Grant Oversight: DCR Regional & Local
Foresters

***Please reach out if you are unaware of the
foresters working in your region***

Changes to FY 27 GGC Grants

❖ Applications must now be submitted through [Grants Management System \(GMS\) | Mass.gov](#)

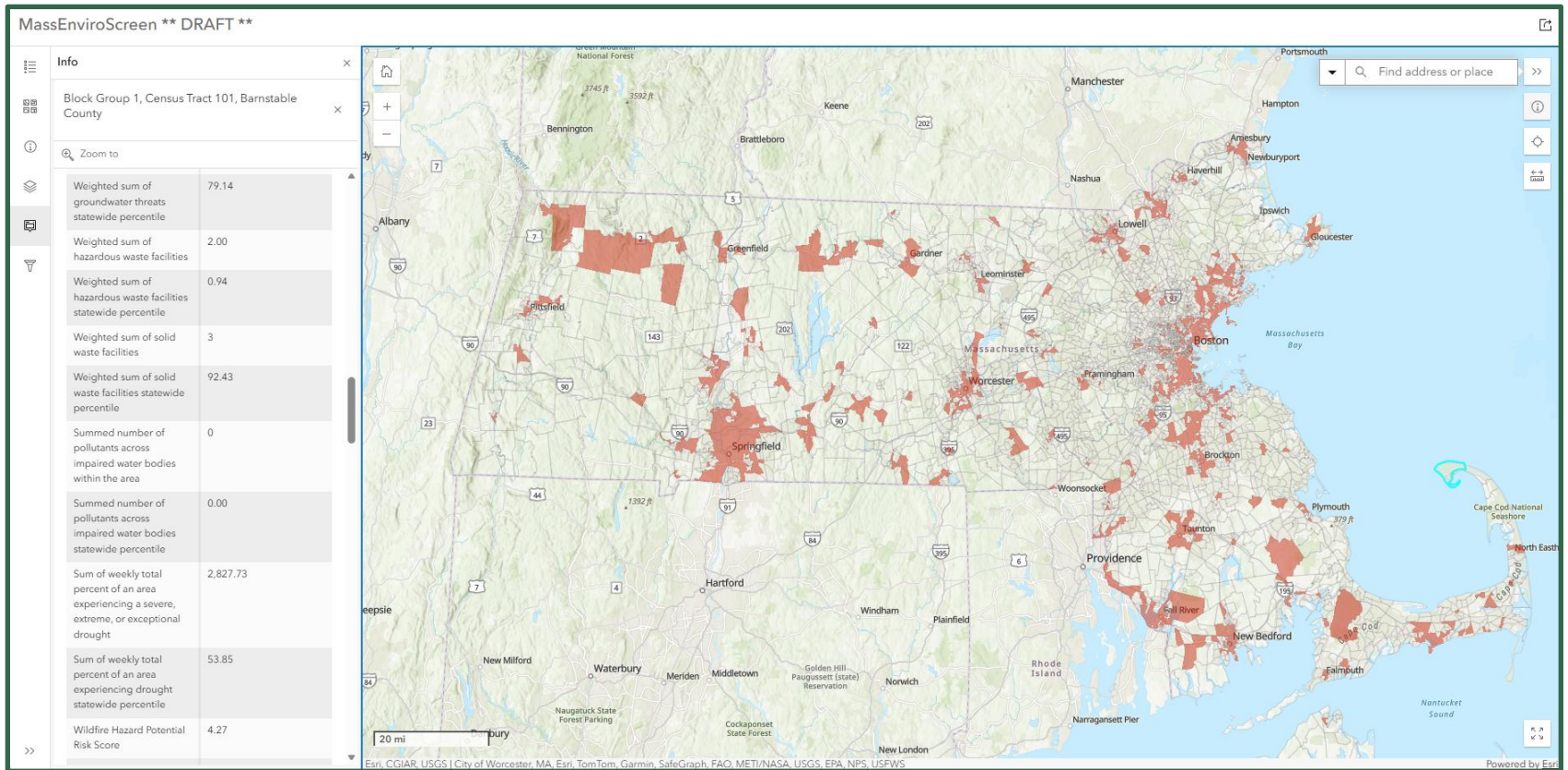
GGC Partnership Grant:

- Grant opportunity is now available to non-profit organizations, gateway municipalities, and state and federally recognized tribes.
 - The following gateway cities have reached DCR tree planting goals, therefore neighborhood door to door canvassing is not an eligible project task:
 - **Brockton, Chelsea, Haverhill, Holyoke, Leominster.**
- *These communities may still apply for the Partnership Grant, to assist with outreach reminders, community tree watering programs and other outreach related projects.

GGC Implementation Grant:

- Decrease in maximum grant award = \$75,000
- Shift in grant focus- Seeking projects that promote DCR GGCP tree planting.
 - Tree stewardship- Municipal watering or contract watering of trees planted by GGCP or trees planted with EEA grant funds; tree maintenance.
 - Impervious surface removal- Creation of tree pits, tree belts, vacant lot restoration, soil remediation
 - Installation of green infrastructure: silva cells, stormwater tree pits, flexi-pave, bioswales, structure soils, etc.
 - Purchase and distribution of outreach materials to promote GGCP
 - Purchase of trees and other tree planting materials for GGCP

New MassEnviroScreen Tool





Goals of GGC Implementation Grant

Facilitate DCR GGCP tree planting activities

Tree stewardship

Urban Heat Mitigation

Siting trees = Right Tree, Right place

Increasing tree canopy, planting shade trees

Impervious surface removal, to accelerate tree planting

Community Engagement and Outreach

Biodiversity

Public Health Benefits

Energy Efficiency

Goals of GGC Partnership Grant

- Distribute GGC Outreach Materials on behalf of the DCR Greening the Gateway Cities Program
- Create and design outreach materials for DCR GGCP
- Neighborhood canvassing to inform gateway city residents about the DCR GGCP.
- Community Tree Watering Programs
- Educational Programs focused on Urban Forestry and Tree Planting

Funding Availability

- **Partnership Grant**
maximum award = **\$30,000**
- **Implementation Grant**
maximum award = **\$75,000**
- Reimbursement grant program; applicant must be prepared to incur costs up front.
- Costs incurred prior to award contract are not eligible for reimbursement.

Eligible Applicants

Partnership Grant:

Gateway City municipalities, non-profit 501 (c)(3) organizations and state & federally recognized tribes working in gateway cities.

Implementation Grant:

Gateway City municipalities, non-profit 501 (c) (3) organizations, public and private schools and state & federally recognized tribes.

* Applicants are encouraged to explore partnership opportunities where it will achieve greater impact

Eligible Project Costs-Implementation

High visibility projects where climate resilience, public health and energy efficiency benefits will be advanced.

- Tree stewardship (**Watering/Maintenance**) for trees planted with EEA grant funding or by DCR GGCP teams.
- Impervious surface removal & soil remediation to facilitate tree planting projects throughout municipality [*Coordinate with DCR Forestry staff!!*] *Please note, tree pits created should be a minimum of 5'x 10'
- Installation of green infrastructure: silva cells, stormwater tree pits, flexi-pave, bioswales.
- Outreach activities that promote GGCP (Costs to distribute outreach materials)
- Costs associated with tree planting projects (trees, materials, labor)

Eligible Project Costs-Partnership

- Staff time to conduct outreach activities (neighborhood canvassing, outreach template design, attending outreach events)
- Purchasing and distributing outreach materials
- Costs associated with community watering programs or other educational programs.

Additional Eligibility Considerations

- Coordination with DCR GGCP staff is imperative!! Connect with foresters for project ideas and locations.
- Tree watering services can be contracted out or executed by grantee staff.
- Green infrastructure should be installed with the goal of planting large canopy trees.
- Follow “**Right tree, right place**” principles
- Sub-contracts for planting or other work is acceptable. An MCA or ISA certified arborist is required to manage day-to-day tree plantings. Please see **Attachment C in Bid Document** for additional contractual specifications for tree planting & care.

PLEASE READ BID DOCUMENT CAREFULLY AND FOLLOW APPLICATION INSTRUCTIONS.

Application Requirements

Project Narrative

- Goals, project deliverables & timeline
- Strategy for outreach, watering and tree stewardship or other project ideas.

Project Plan (Implementation)

- Identify locations of projects, specific addresses where impervious surfaces will be removed, trees will be watered, green infrastructure will be installed or trees will be planted. Plan should be reviewed with municipal Planning Department
- Coordinate with DCR Forester as appropriate.

Project Budget

- Total estimated costs, itemized where possible
- Project costs contributed in-kind or other funding matches

Additional Required Documents

Cities:

- Letter from CEO authorizing application and identifying the project manager
- Letter of support from Tree Warden or appropriate commission
- Documentation that planting plan has been reviewed by planning board
- Letters of endorsement from any partners if tree planting is proposed on lands that are not owned by applicant

Non-profits:

- Letter of endorsement from the City
- Articles of Incorporation and IRS 501(c)(3) letter

GGC Implementation Application Evaluation

Project Scope/Organizational Capacity (35%)

Burdened Areas & Communities with Population Characteristics that are more vulnerable to Pollution & Climate Burdens (20%)

Overall Project Quality (45%)

See Grant Document for full scoring criteria.

GGC Partnership Application Evaluation

Project Description (25%)

Community Investment & Outreach 30%

Overall Project Quality (45%)

See Grant Document for full scoring criteria.

Grant Timeline

APPLICATION DEADLINE: Friday, June 5th 2026 at 11:59 pm

Submit application via [Grants Management System \(GMS\) | Mass.gov](#)

- **June:** EEA & DCR conduct application review.
- **August/September:** Awards announced.
- **September 2026:** Intended contract effective date
- **Fall 2026 & Spring 2027:** Projects executed
- **June 30, 2027:** Deadline for projects to be completed.
- **July 16, 2027:** Deadline for submission of reimbursement requests and final reports.

Thank you!

Contact Information:

Hilary Parasmó

857-207-1912

Hilary.Parasmó@mass.gov