



GREEN LINE EXTENSION PROJECT



massDOT
Massachusetts Department of Transportation

1



GLX Community Working Group
Monthly Meeting
December 3, 2019

Agenda

GLX Year in Review/Highlights

- Terry McCarthy, GLX – MBTA

Construction Update

- Jeff Wagner, Public Involvement Manager, GLX-C



MBTA Update



massDOT
Massachusetts Department of Transportation





2019 Year in Review / Highlights



massDOT
Massachusetts Department of Transportation



Arrival of Multi-Purpose Machine (MPM)



January 2019



massDOT
Massachusetts Department of Transportation



Third Avenue Demolition



Utility Isolation, Hazardous Material Abatement, and Demolition



massDOT
Massachusetts Department of Transportation



Third Avenue Demolition



Utility Isolation, Hazardous Material Abatement, and Demolition



massDOT
Massachusetts Department of Transportation



Homans Building – Gilman Square



Utility Isolation, Hazardous Material Abatement, and Demolition



massDOT
Massachusetts Department of Transportation

8
8



GLX Community Working Group
Monthly Meeting
December 3, 2019

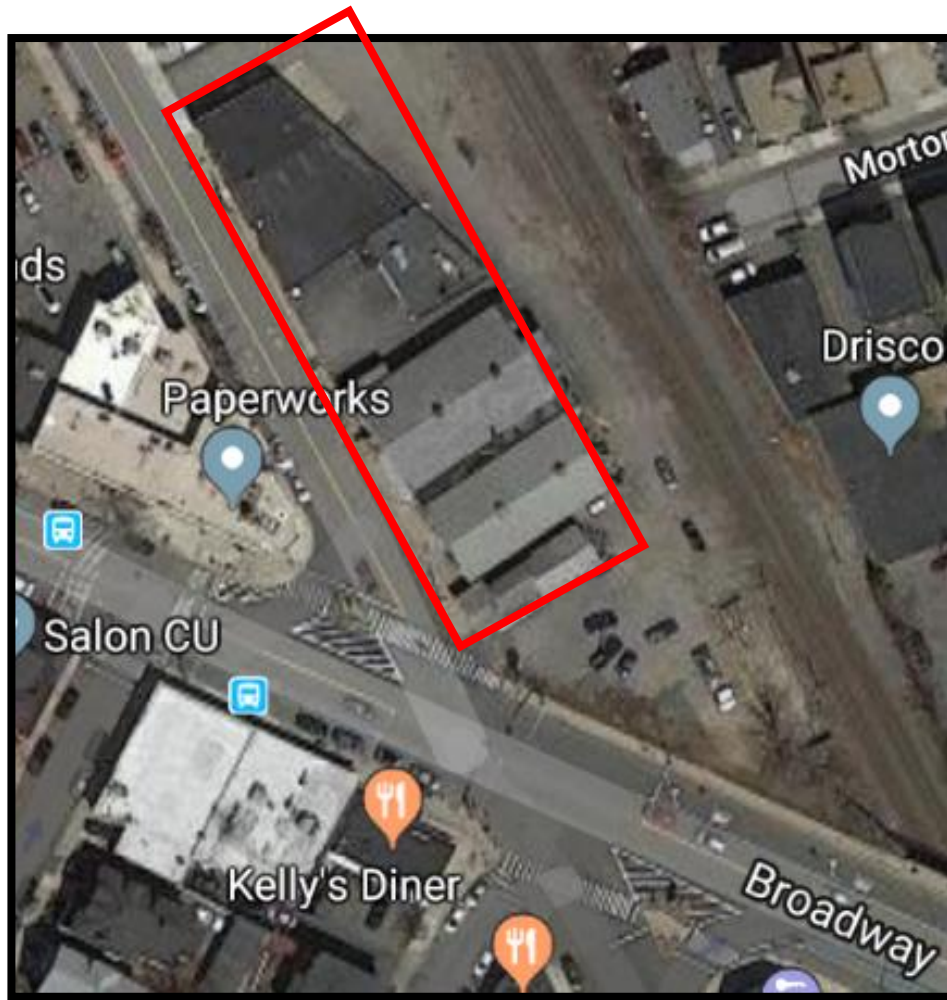
Homans Building – Gilman Square



Utility Isolation, Hazardous Material Abatement, and Demolition



Ball Square Demolition



Utility Isolation, Hazardous Material Abatement, and Demolition



Ball Square Demolition



Utility Isolation, Hazardous Material Abatement, and Demolition



massDOT
Massachusetts Department of Transportation



Lechmere and Fitchburg Viaducts



Viaduct / Drilled Shaft Work



Broadway Bridge



Facing South



Broadway Bridge



Facing North



Washington Street Bridge

- *Phase I nearly complete*
- *Phase II start sequenced with upcoming track shift*



Medford Street Bridge

Commencement of drilled shafts targeted for January 2020



Gilman Square Utility Work

60" Drainage pipe installation 200 feet of completion





GLX-C Construction Update



Railway Worker Protection – Rail Shunts

- Keolis has implemented additional safety protocols to the Railway Worker Protection (RWP) Job Briefing Process
- Employees In Charge (EICs) will now install a shunt on the affected tracks prior to delivering the RWP Briefing
- Supplemental protection shows the affected tracks are under the control of the EIC
- A rail shunt is a low-resistance wire apparatus that when clamped to parallel tracks will create a short-circuit between them mimicking conditions present when a locomotive is on the tracks
- Shunt communicates affected track(s) are occupied and trains are not allowed to enter



Construction Update



Key construction activities through end of 2019 / early 2020

- **Relocate Commuter Rail Track to final position on eastern side of alignment**
- **Prior to track relocation we must:**
 - Complete drainage work including north of Broadway at Granville
 - Complete noise & retaining wall panel placement
- **Vehicle Maintenance Facility**
 - Foundation, underground utilities, retaining wall, and stormwater detention facility
- **Lechmere area/Boston Engine Terminal**
 - Steel in place throughout & deck placement underway
 - Continue construction on new Lechmere station



Construction Update

Track Shift



Construction Update



Commuter Rail Track Shift Section 1 – near Tufts University

- Completed one line of track shift weekend of Nov. 22 – 24
- Track 2 to be shifted Dec. 14 & 15
- Weather has been a challenge



Construction Update

Commuter Rail Track Shift

Section 2 – Washington St. to Sycamore St.

- Track shift now planned for Jan. 18 – 19, 2020
- Preparations for track shift continue throughout this span
- Stormwater line placement near Central to be completed by end of next week



Construction Update



Commuter Rail Track Shift

Section 3 – Sycamore St. to Harvard St.

- Drainage and wall work continues along this stretch of the project



massDOT
Massachusetts Department of Transportation



Construction Update

Union Square Station Area

- Soil remediation underway near the future Union Square Station
 - 3,500 cubic yards of contaminated material to be dispositioned
- Retaining wall construction behind Target to start next week



Construction Update

Lechmere Area

- Foundation drilling continues between BET area and Water St.
- Actively pouring concrete columns and pier caps for viaduct and Community Path



Construction Update

Boston Engine Terminal Area

- Work near Brickbottom Condominiums is very active and will continue especially with Community Path foundation drilling



Construction Update

Boston Engine Terminal Area



Construction Update

Vehicle Maintenance Facility

- Retaining wall work and drainage installation continues
- Foundation work on VMF and Transportation Building underway



Construction Update

Temporary Fire Truck Outpost near Washington St.



Outreach

GLX Hotline and Response to Comments/Requests

- 965 Inquiries thru Hotline, e-mail or direct contact with outreach staff (as of Nov. 27)
- 894 actions closed out.



Outreach

GLX Community Connection Team

- The Thanksgiving Food Drive brought in more than 700 pounds of food and personal care product donations.



Project Soup staff thank the GLX Project Team for their continued support.

The GLX Community Connections Team
PRESENTS

Somerville Homeless Coalition

FALL

FOOD DRIVE

MOST WANTED
Peanut Butter
Toiletries - (toothpaste,
sani-wipes, deodorant)
Oil - Small Bottles
Coffee
Lunch-size snacks

BRING UNEXPIRED - NONPERISHABLE FOOD ITEMS

FOOD DRIVE **OCT 28** **NOV 15** **FOOD DRIVE**

Drop Off Locations: GLXC Main Office (2nd floor lobby)
GLX Office (3rd floor lobby)
or 35 Charlestown St.

Outreach

GLX Community Connection Team

- Holiday Season Fundraiser has us teaming up with Medford PD



MEDFORD POLICE DEPARTMENT

&

THE GLX COMMUNITY CONNECTION TEAM

HAS COME TOGETHER TO SUPPORT THIS GREAT CAUSE



They are a non-profit organization committed to helping victims of domestic violence, sexual assault and stalking crimes.

Portal to Hope offers the following services:

Emergency shelter in a protective, nurturing environment which is free from mental, physical or sexual violence

Legal aid for ensuring continued civil protections through the legal court system

Job placement & housing assistance which helps victims rebuild their lives, both professionally and personally

Youth programs designed to educate our children and help break the cycle of violence.



Donations suggested:

Gift cards: Marshalls, TJ Maxx & Kohl's

Transportation cards: Charlie cards for MBTA rides

Food gift cards: Market Basket, Stop & Shop & Wegmans

Deadline: Friday, December 20th @ 9 am

Drop off Locations: 200 Inner Belt Road or 35 Charlestown St.

To ensure safekeeping please give all gift cards to Mary Grace or Alanna



massDOT
Massachusetts Department of Transportation



Discussion

Q & A

