



GREEN LINE EXTENSION PROJECT



massDOT
Massachusetts Department of Transportation



Agenda

Welcome & Introduction

- Terry McCarthy, GLX – MBTA

Stations Design Update

- John West GLXC

Construction Update

- John West, GLXC



Stations Design



GLXC – Stations Update

John West



massDOT
Massachusetts Department of Transportation



Lechmere Station

Lechmere Station
Conceptual Design –
For Discussion
Purposes Only |
Subject to Change

Lechmere Station
Conceptual Design –
For Discussion
Purposes Only |
Subject to Change

LECHMERE STATION NORTH HEAD HOUSE ROOF DEVELOPMENT



GLX

REVISIONS	
NO./DATE	REMARKS
1	initial design
2	initial design
3	initial design
4	initial design
5	initial design

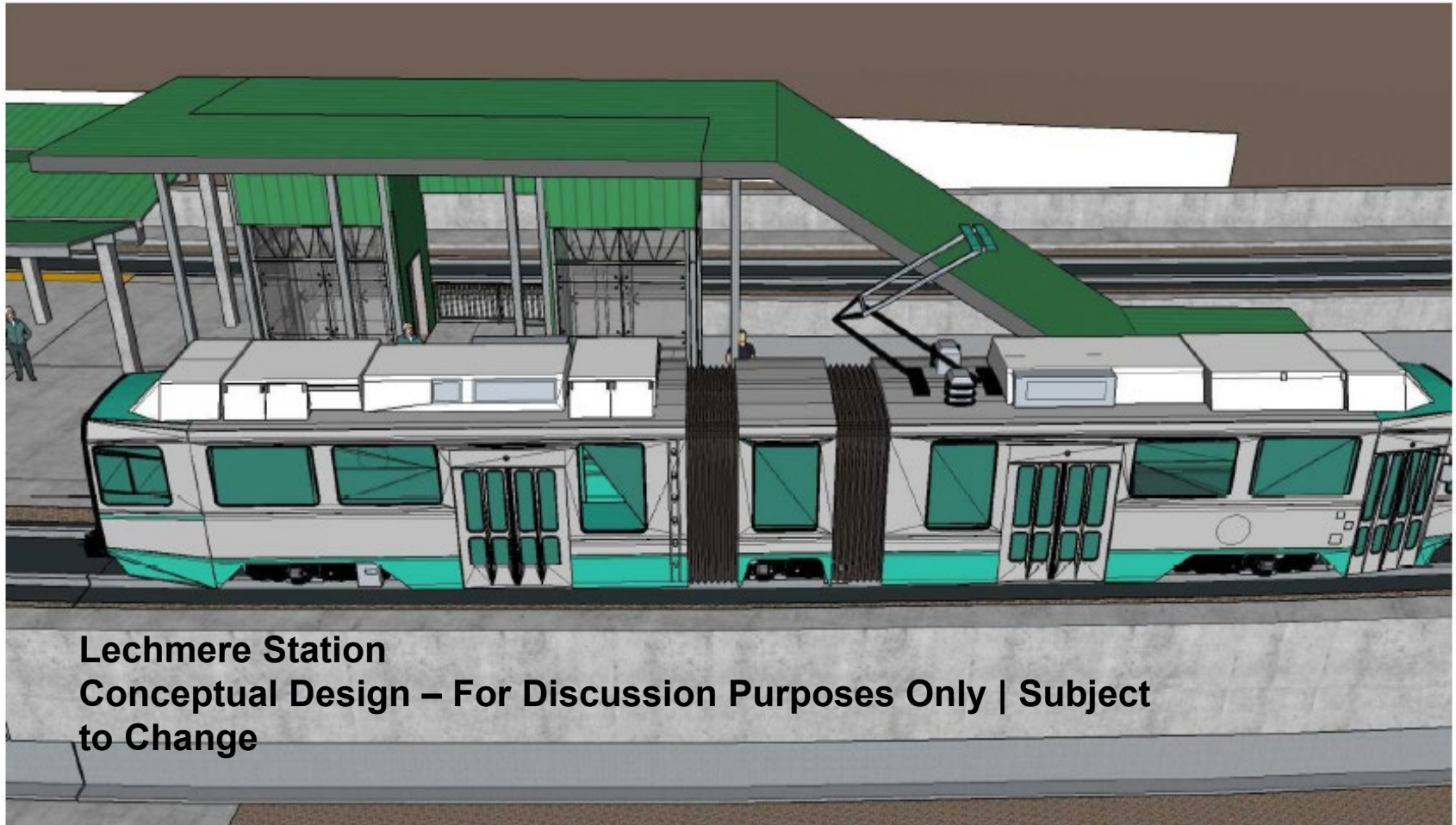
4



massDOT
Massachusetts Department of Transportation



Lechmere Station



**Lechmere Station
Conceptual Design – For Discussion Purposes Only | Subject
to Change**

LECHMERE STATION NORTH HEAD HOUSE ROOF DEVELOPMENT



GLX

REVISIONS

NO.	DATE	DESCRIPTION
1	12/11/18	Initial Design
2	12/11/18	Revised Design
3	12/11/18	Revised Design
4	12/11/18	Revised Design
5	12/11/18	Revised Design

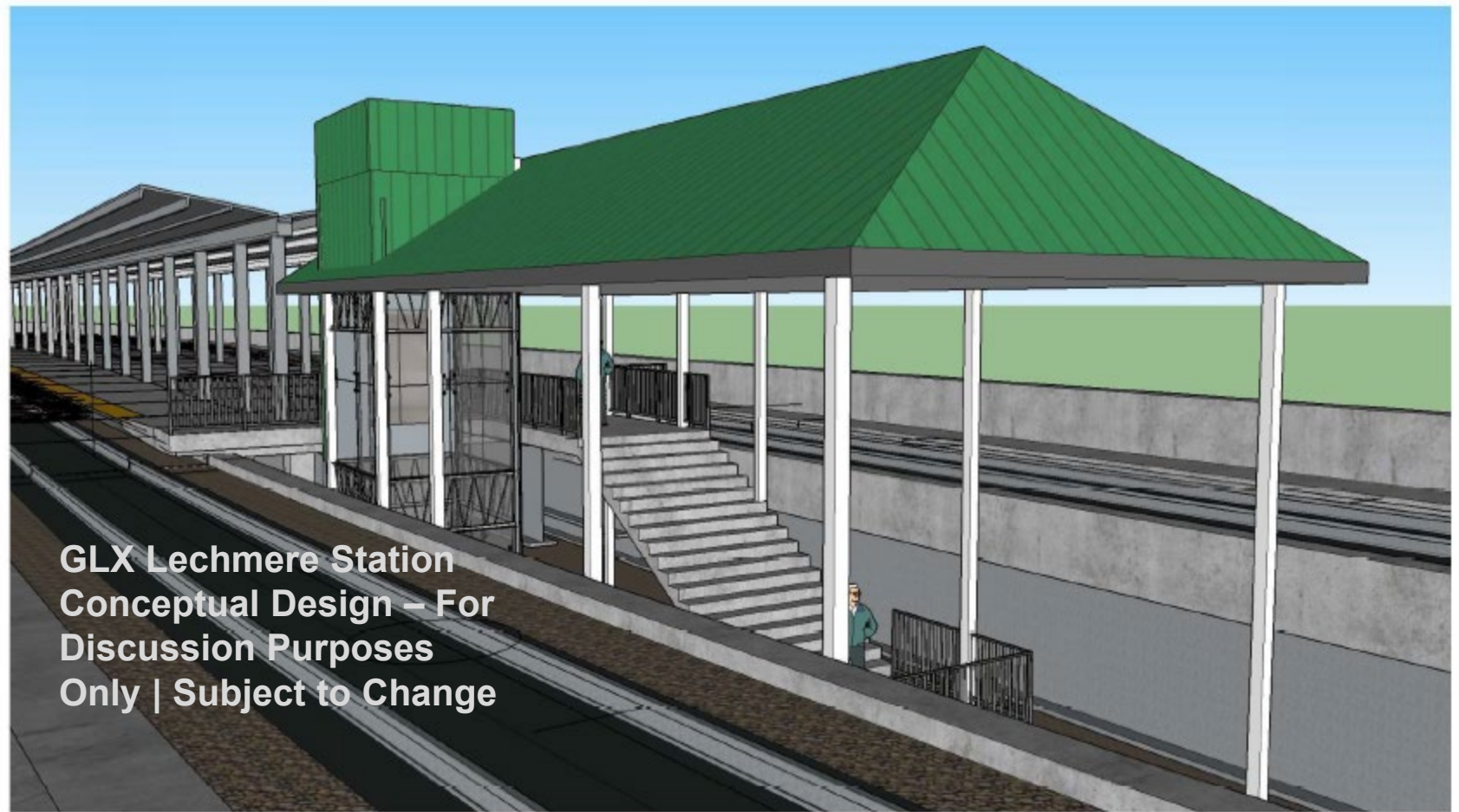
TO
A



massDOT
Massachusetts Department of Transportation



Lechmere Station



LECHMERE STATION SOUTH HEAD HOUSE ROOF - PROPOSED



GLX

REVISIONS

NO.	DATE	BY	REVISION
1			
2			
3			
4			
5			

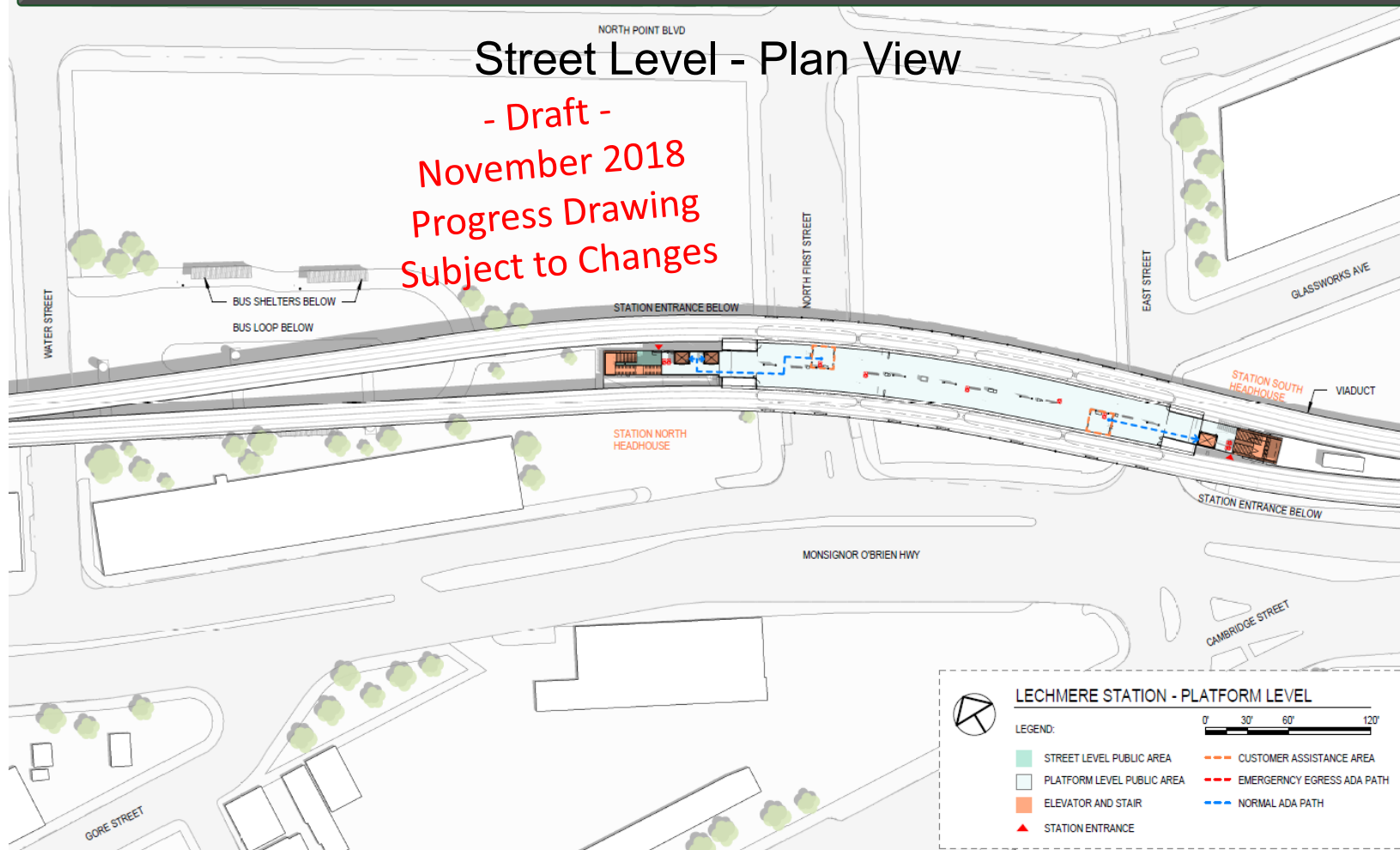
A 06



massDOT
Massachusetts Department of Transportation

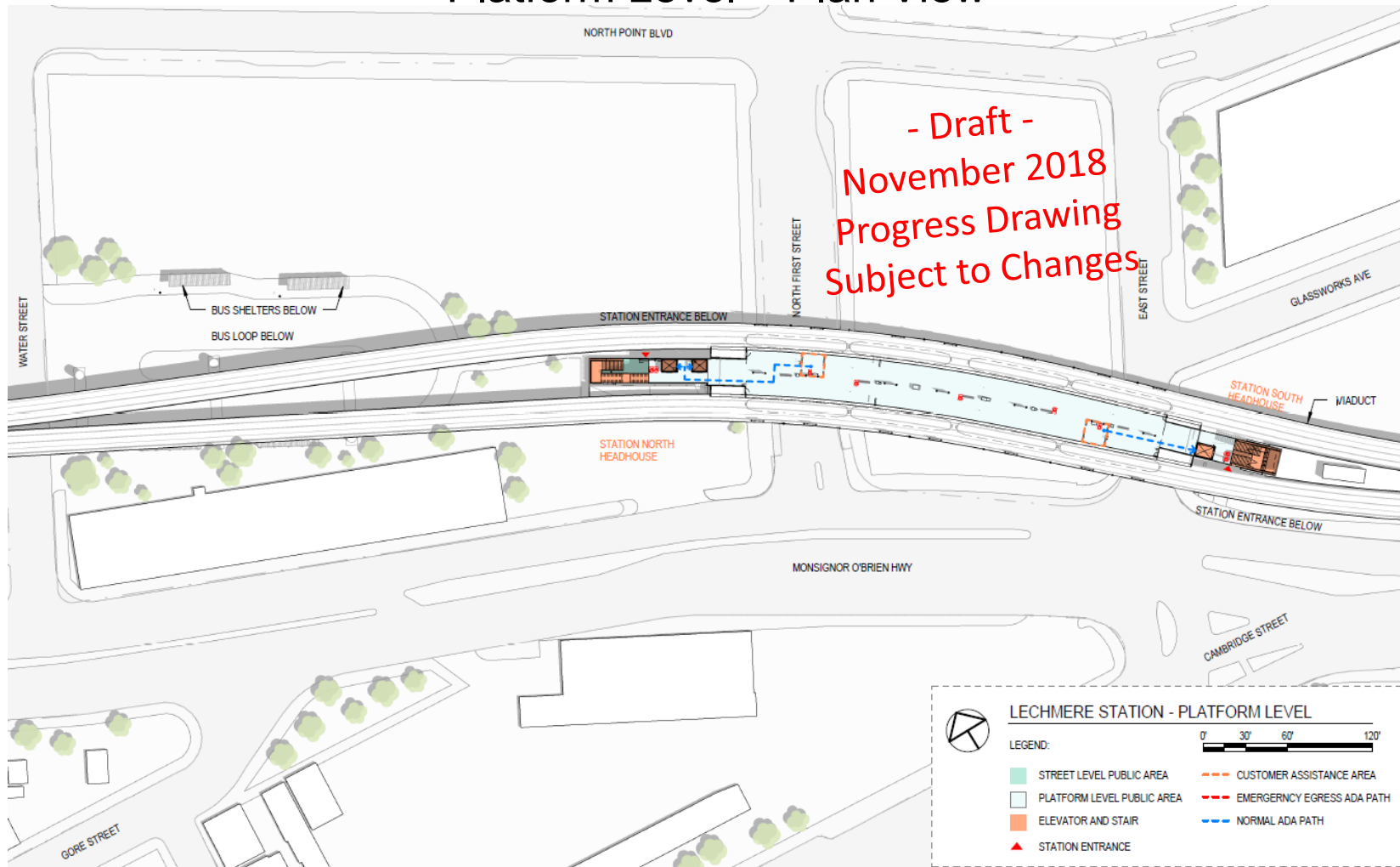


Lechmere Station



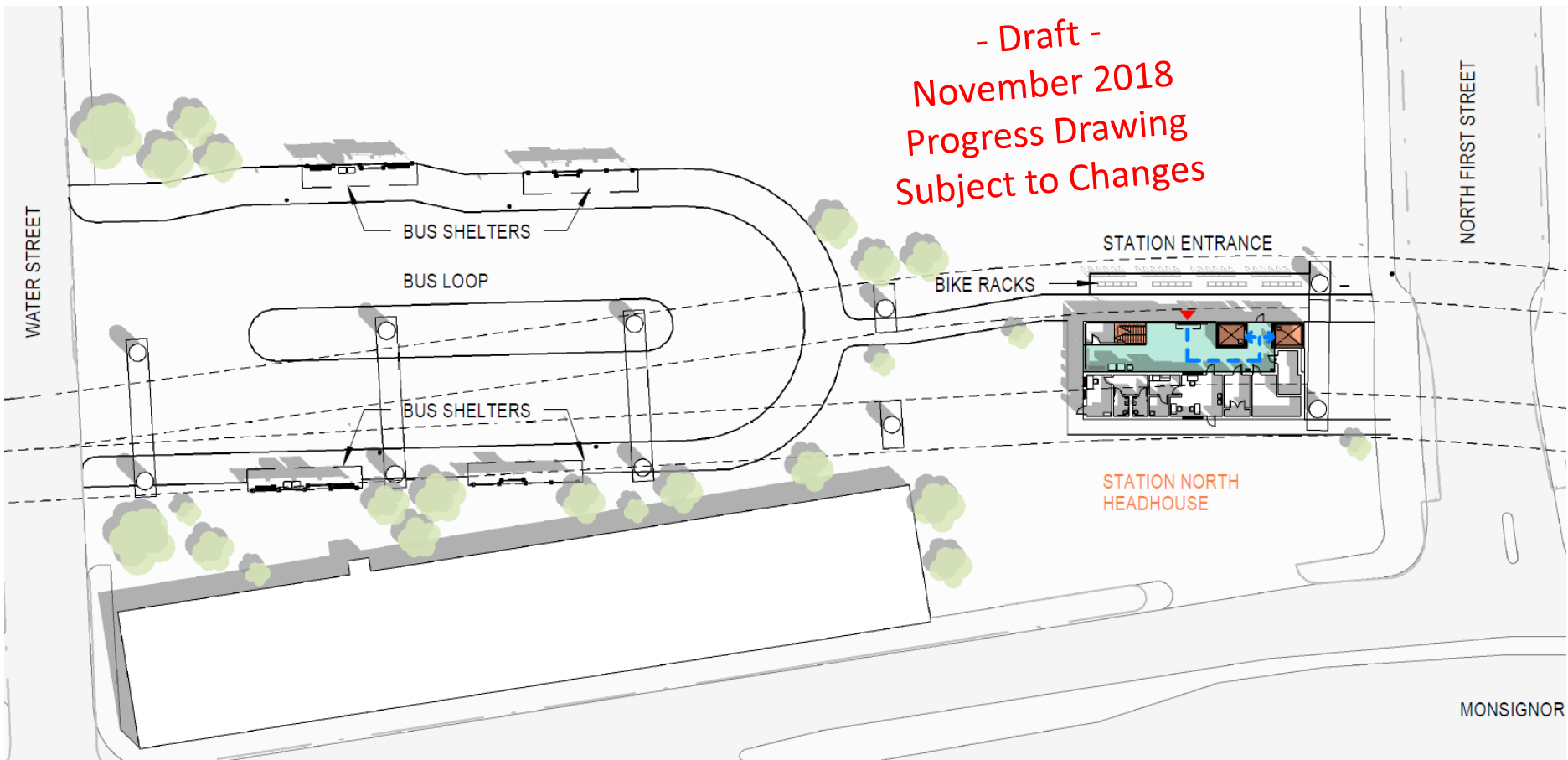
Lechmere Station

Platform Level – Plan View



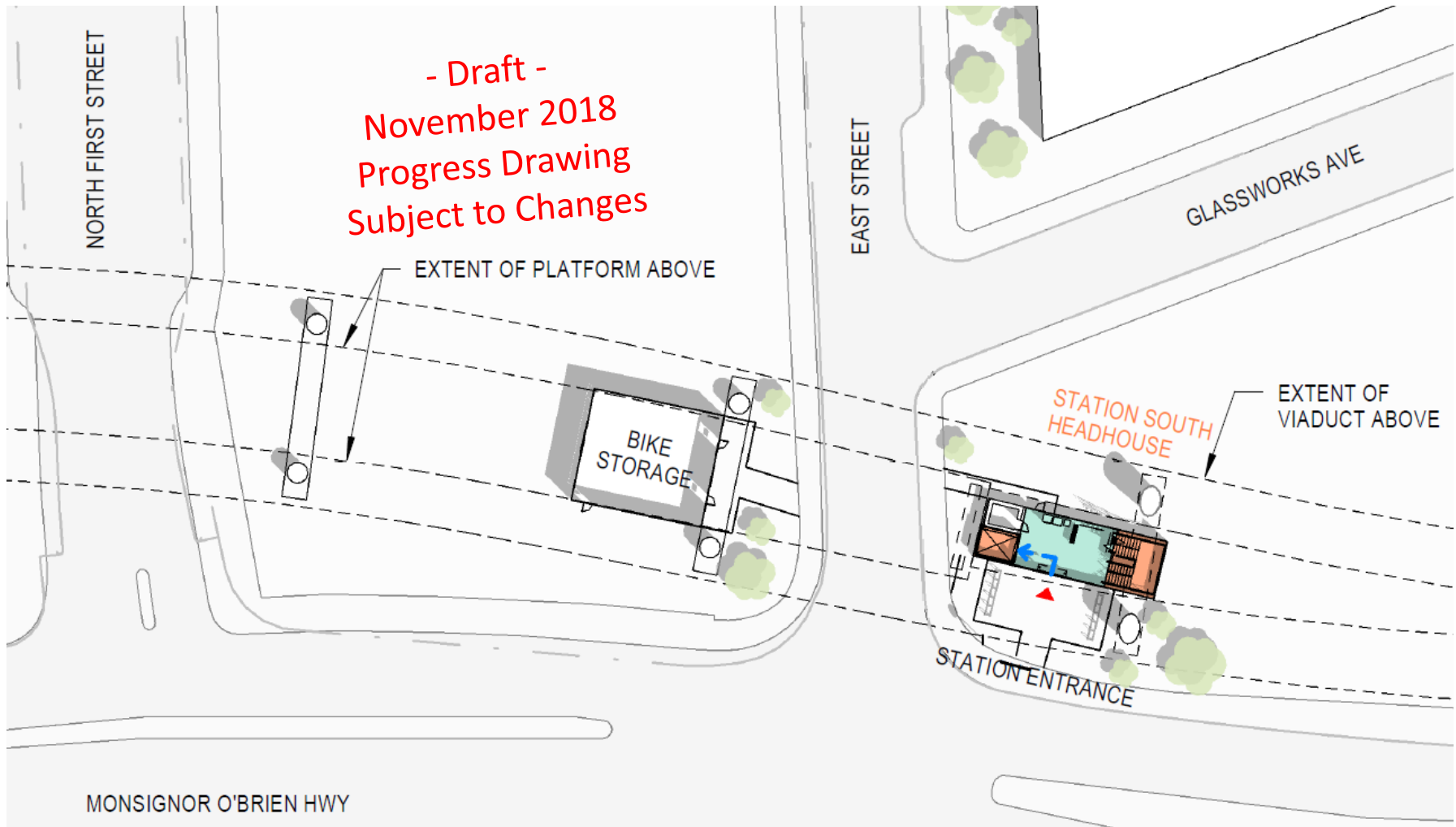
Lechmere Station

Street Level - North Headhouse and MBTA Bus Loop



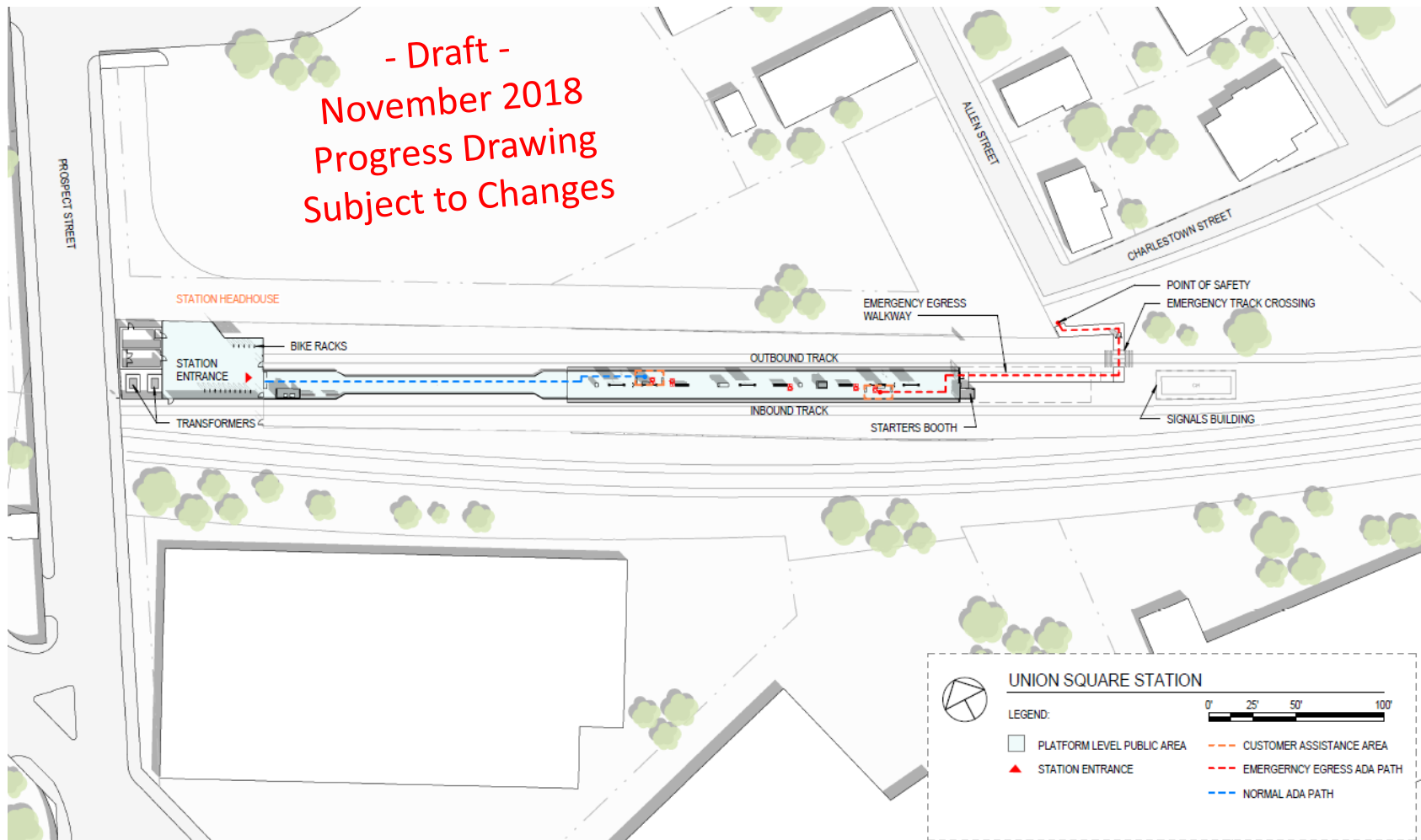
Lechmere Station

Street Level - South Headhouse and Bike Storage



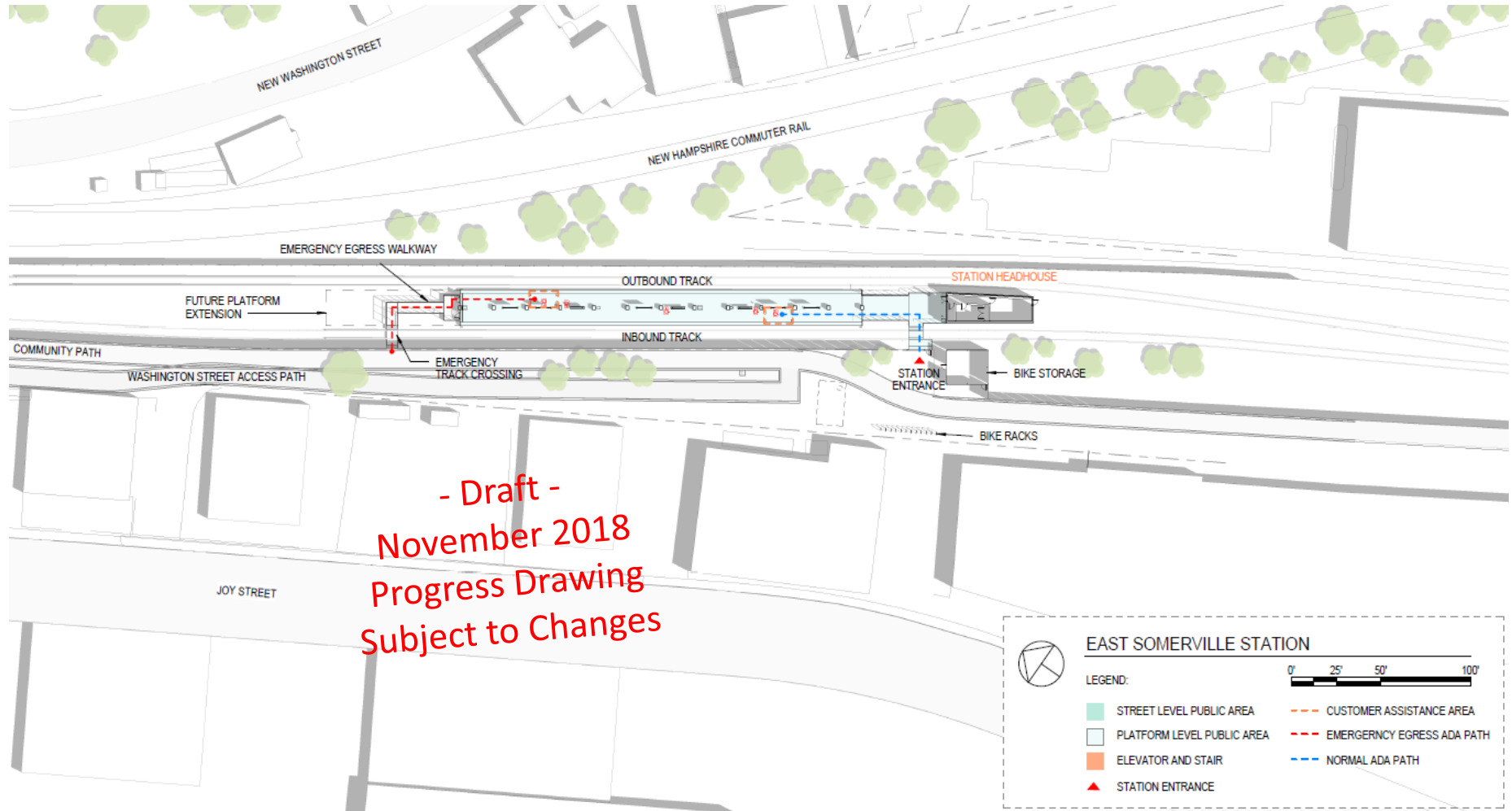
Union Square Station

Street and Level Platform View

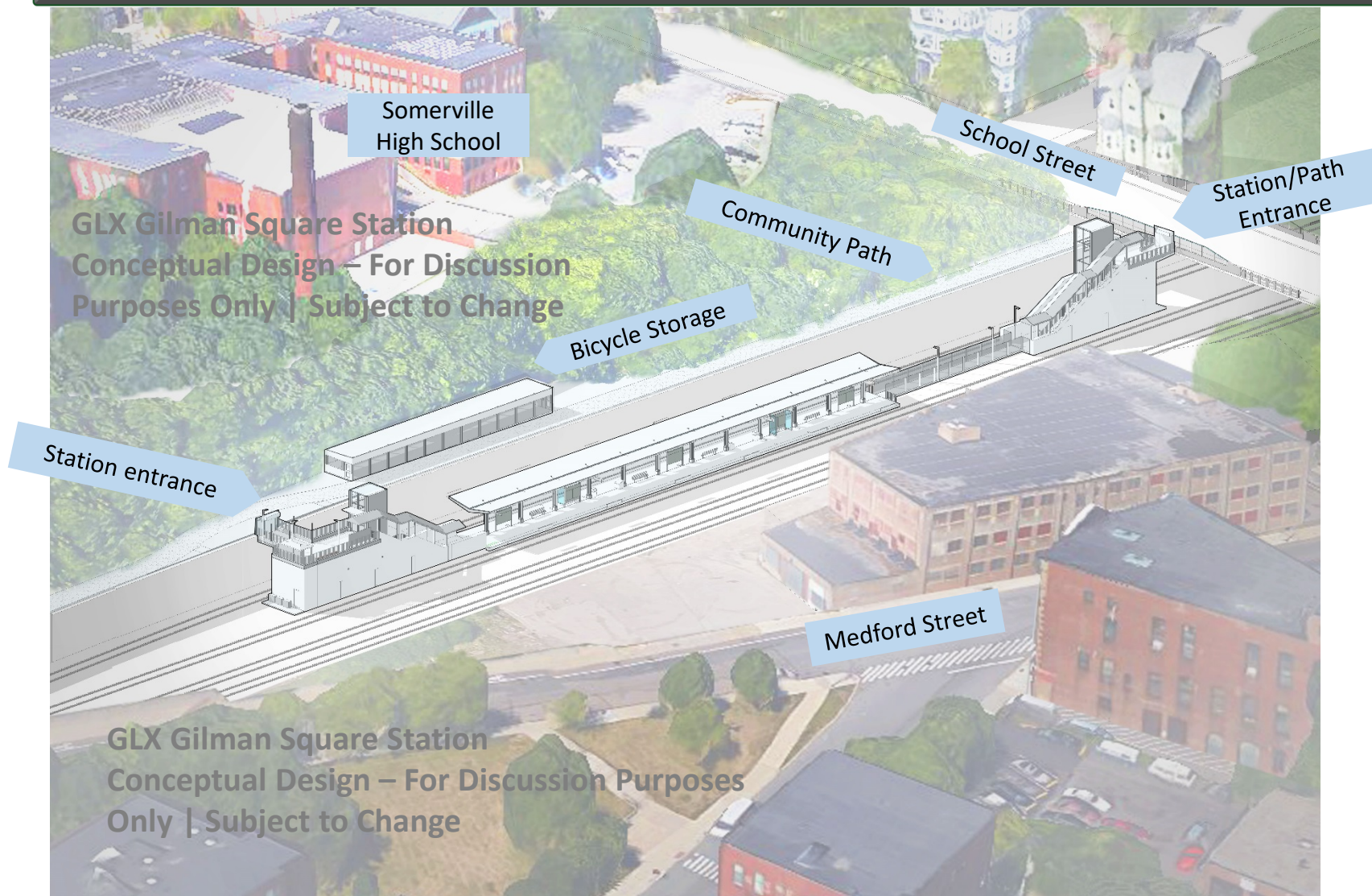


East Somerville Station

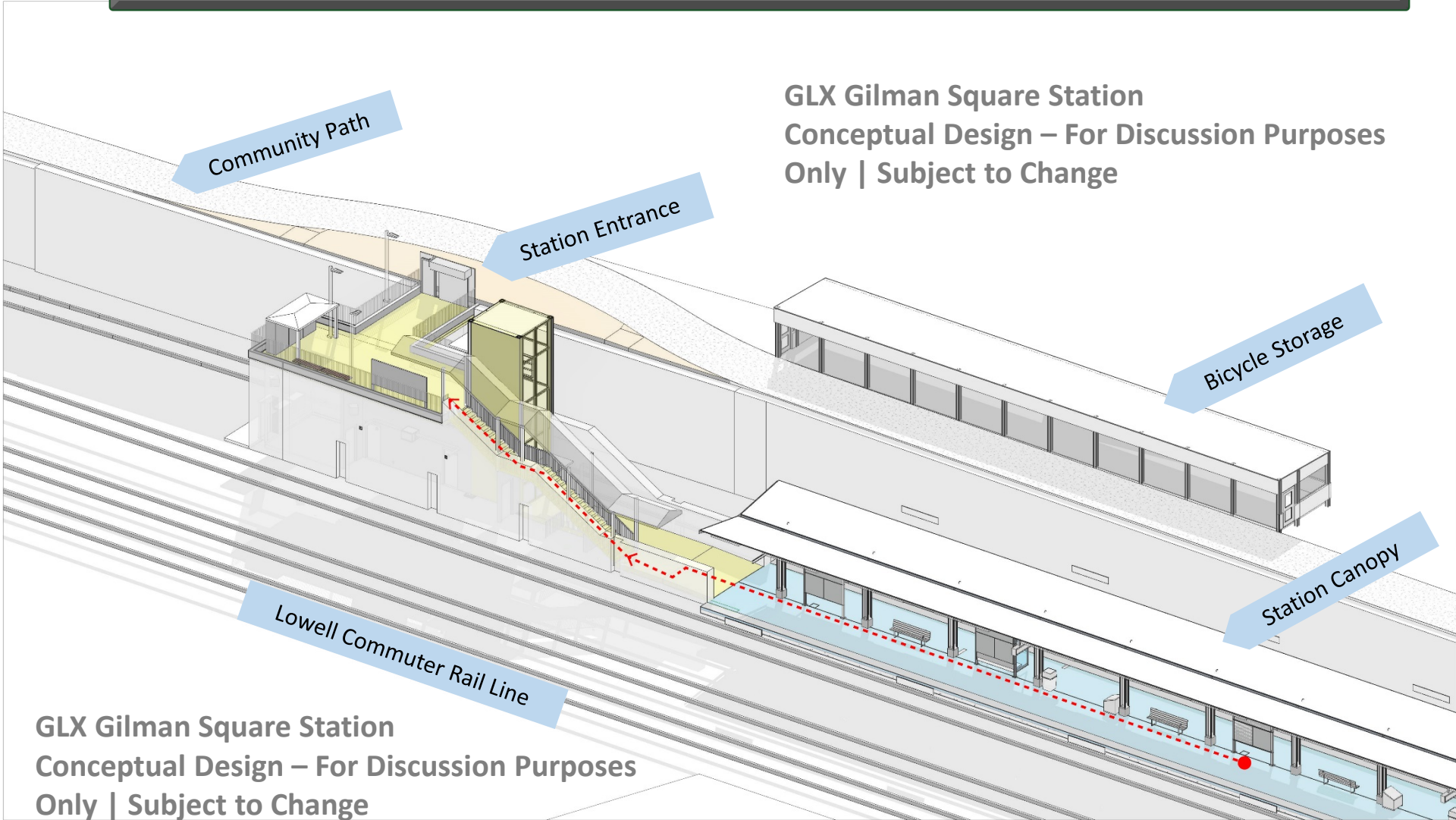
Street and Platform Level View



Gilman Square Station



Gilman Square Station



Gilman Square Station

Somerville City Hall
&
High School

GLX Gilman Square Station
Conceptual Design – For Discussion
Purposes Only | Subject to Change

Community Path

School Street

Station Entrance

To Medford St.

Lowell Commuter Rail Line

GLX Gilman Square Station
Conceptual Design – For Discussion Purposes
Only | Subject to Change

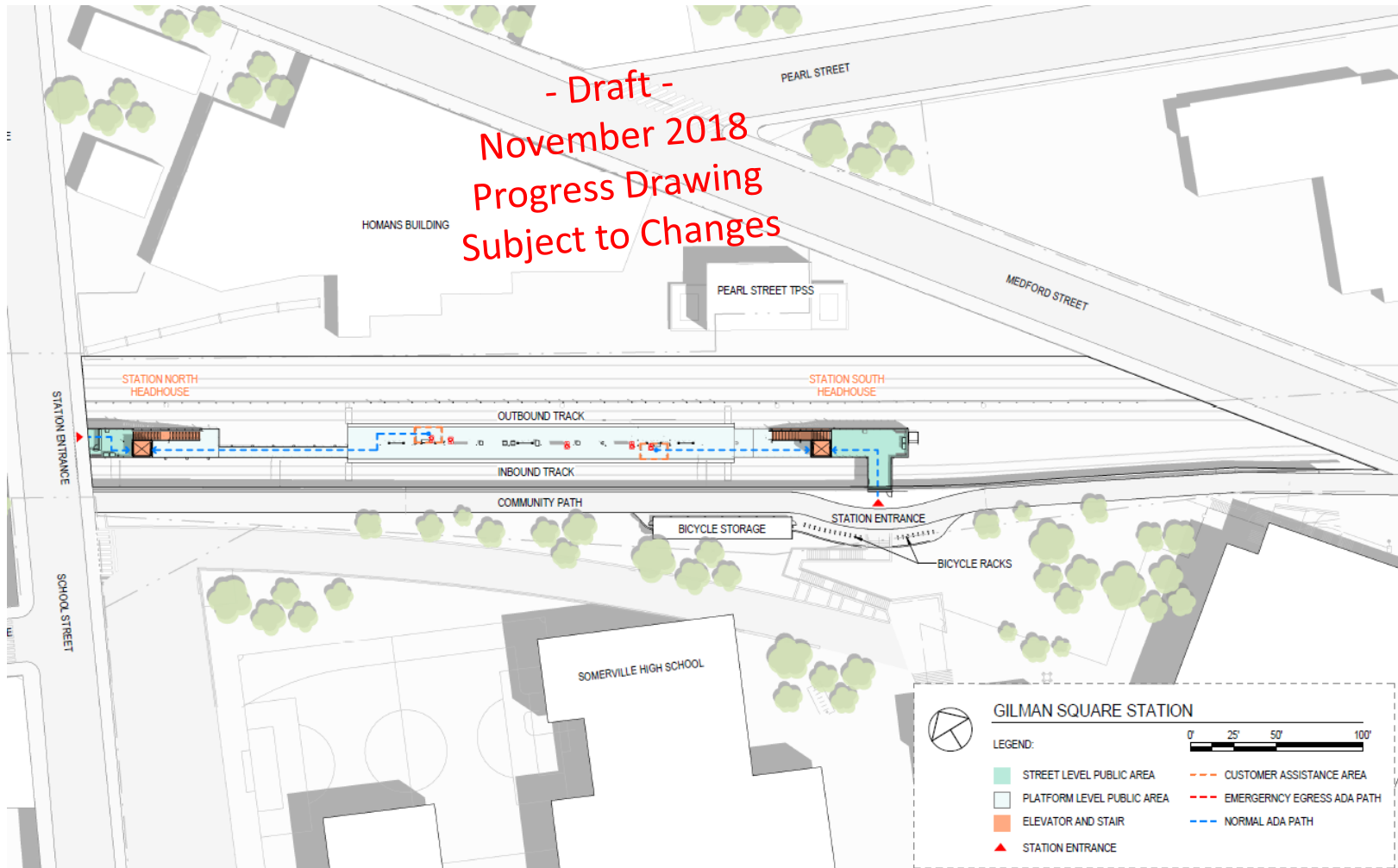


massDOT
Massachusetts Department of Transportation



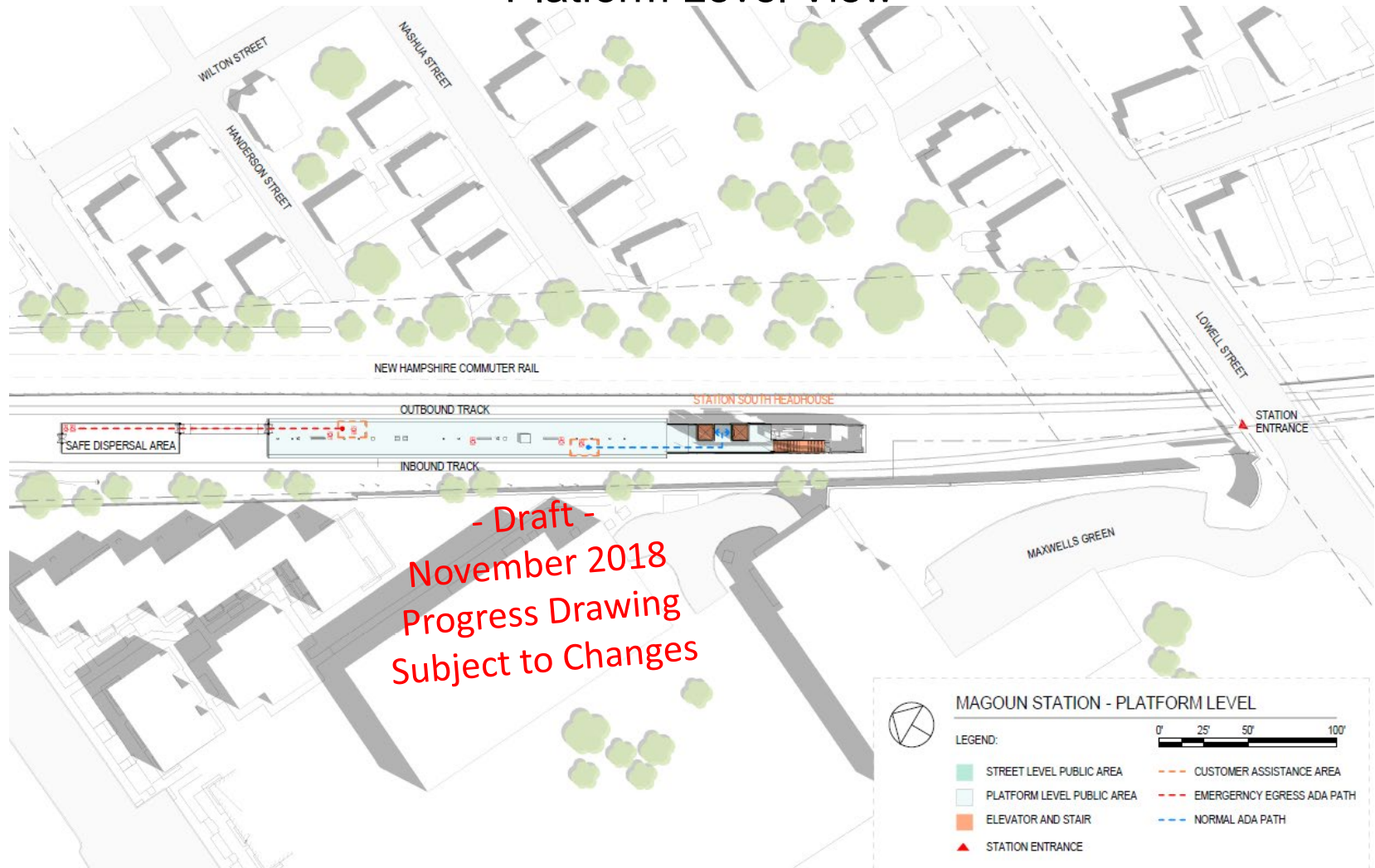
Gilman Square Station

Street and Platform Level View



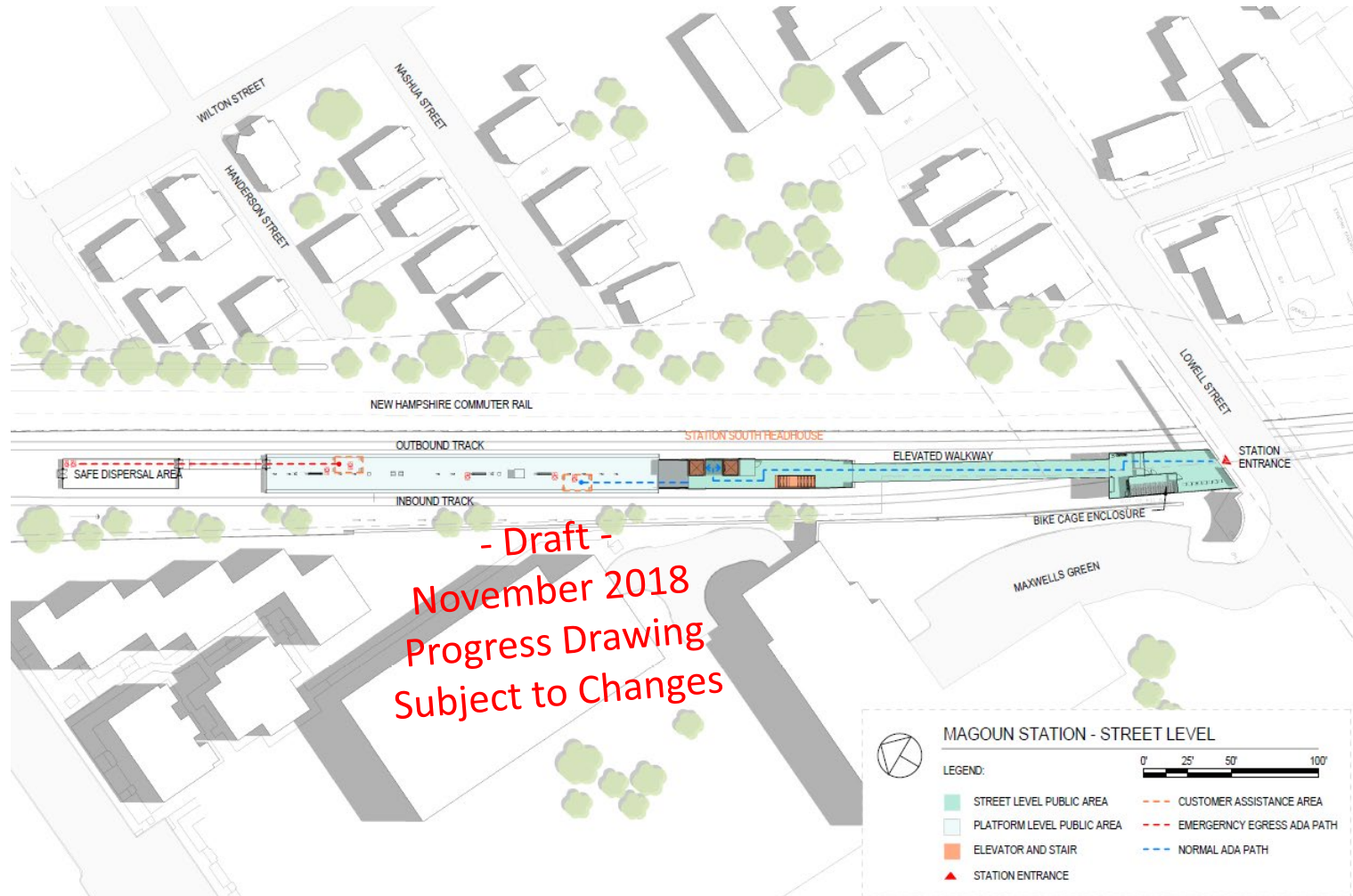
Magoun Square Station

Platform Level View



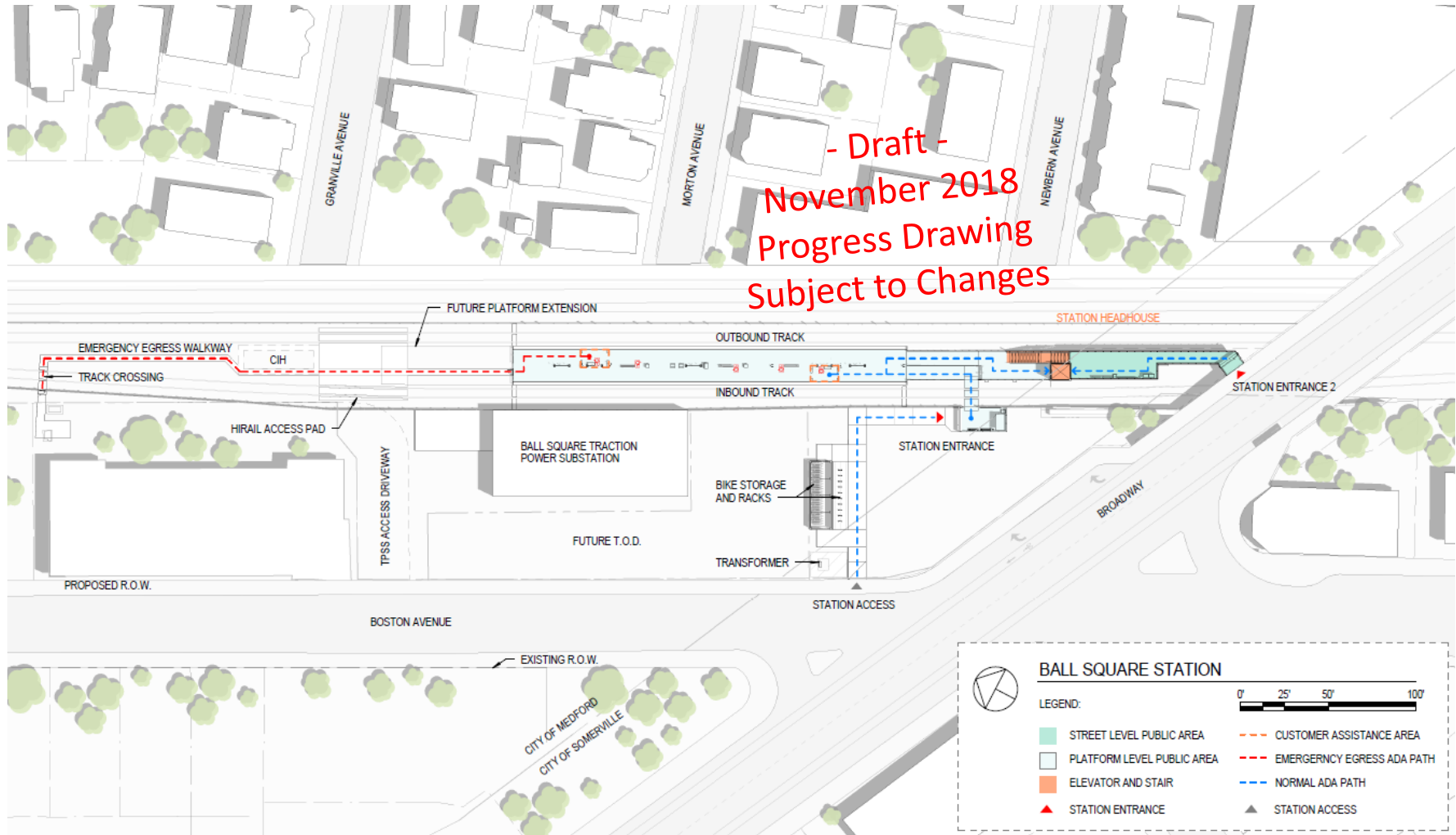
Magoun Square Station

Street Level View



Ball Square Square Station

Street and Platform Level View



College Avenue Station

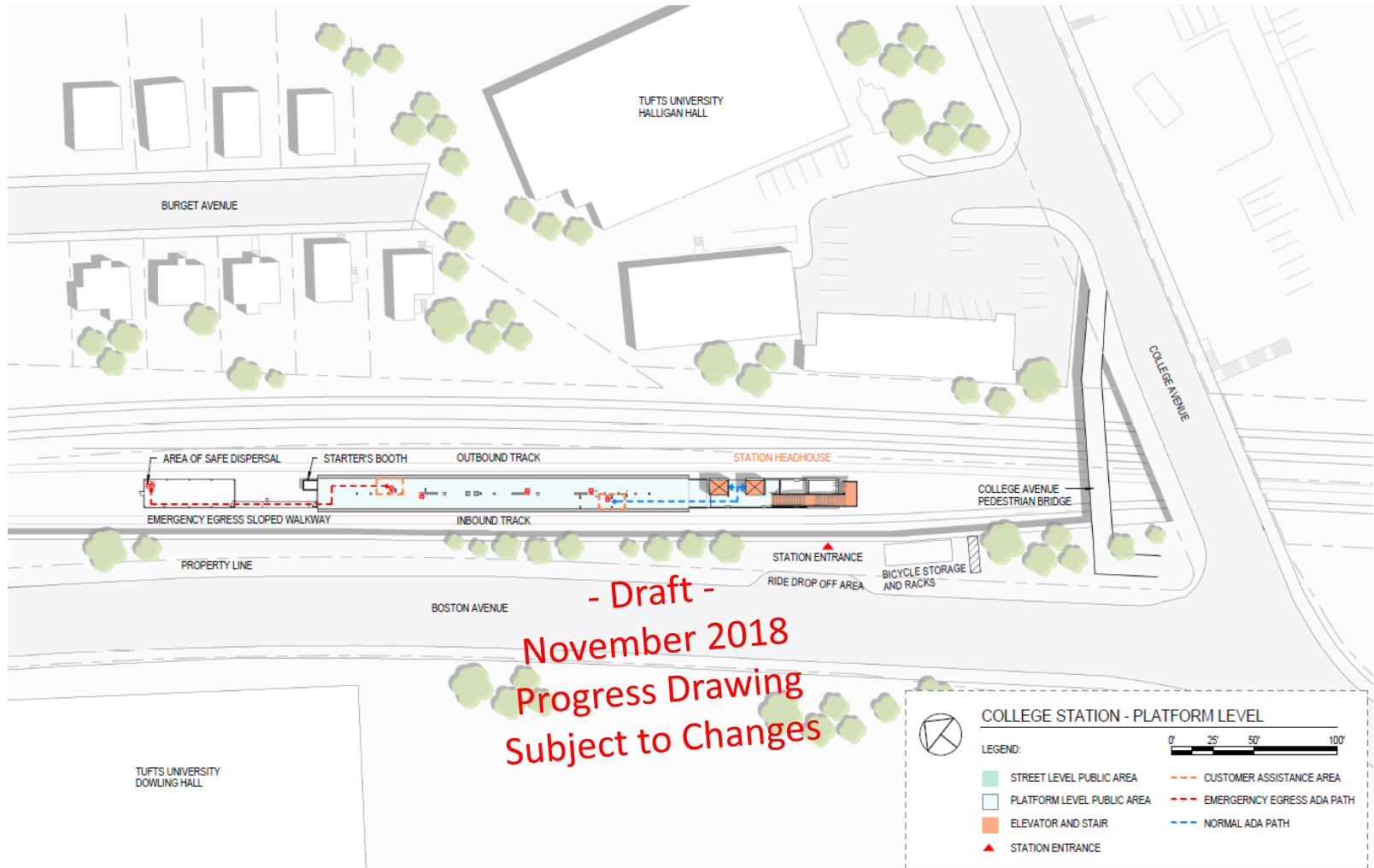


College Avenue Station



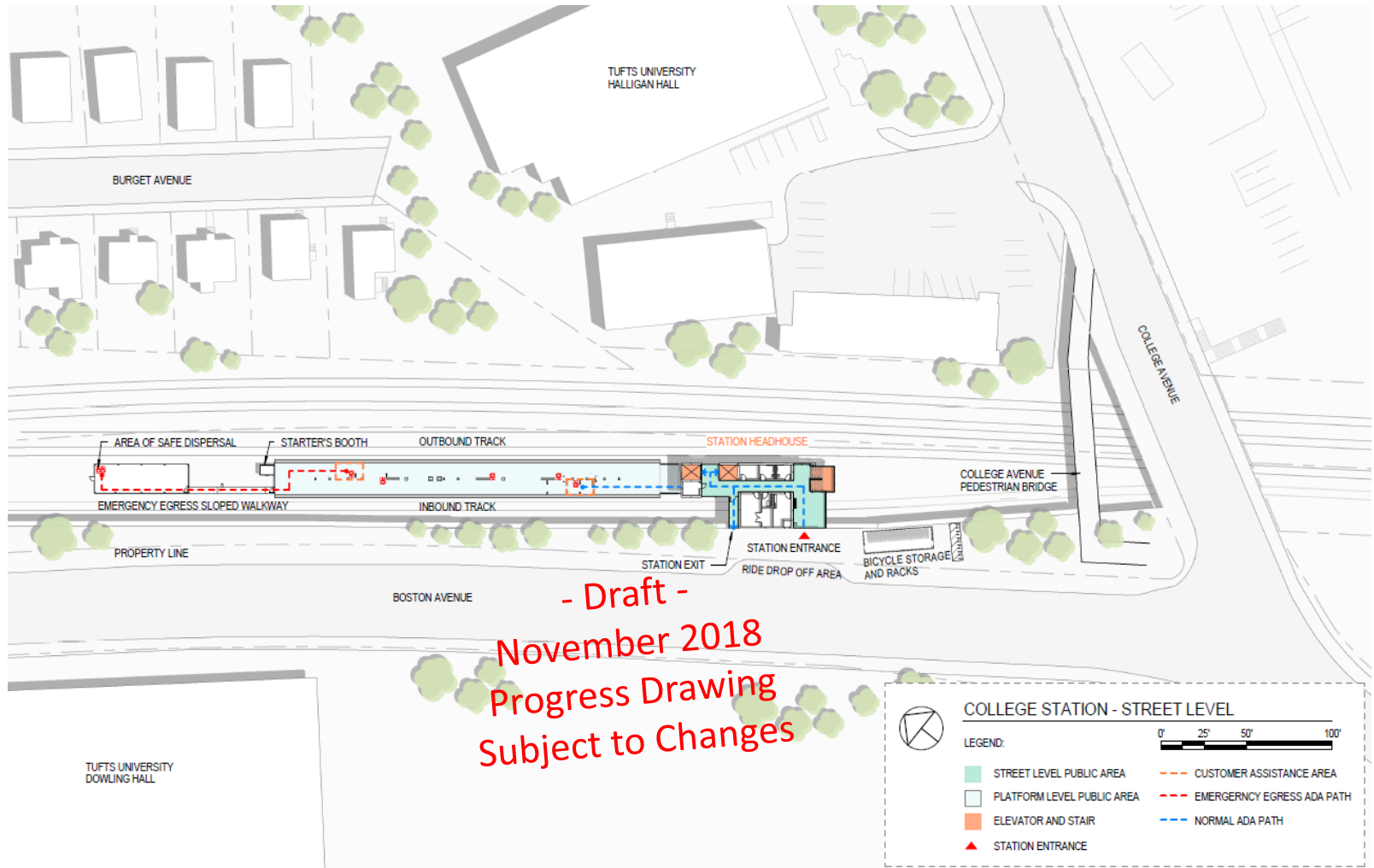
College Avenue Station

Platform Level View



College Avenue Station

Street Level View



Safety & Introduction



GLX-C Construction Update

John West



Project Status

Safety

- Safety Recognition at All Hands Meeting on Nov. 29



Project Status

Staffing

- 225+ personnel including GLXC and subcontractor staff



Project Status

Demolition Update



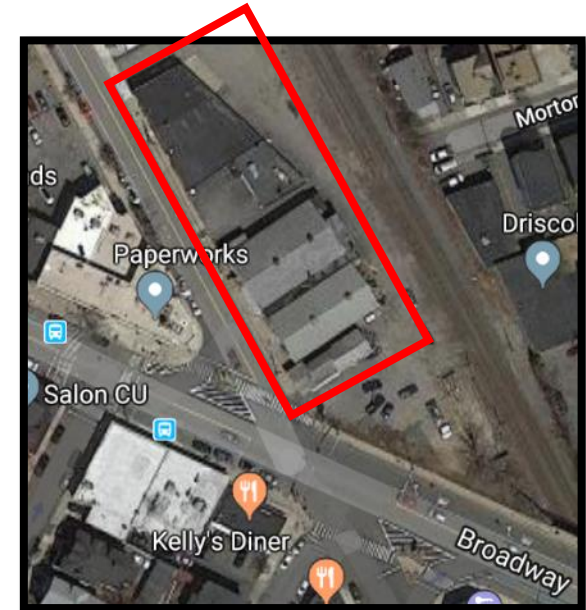
3rd Avenue

- Demolition to start following utility isolation



Homans Building

- Hazardous materials abatement underway
- Demolition in early 2019



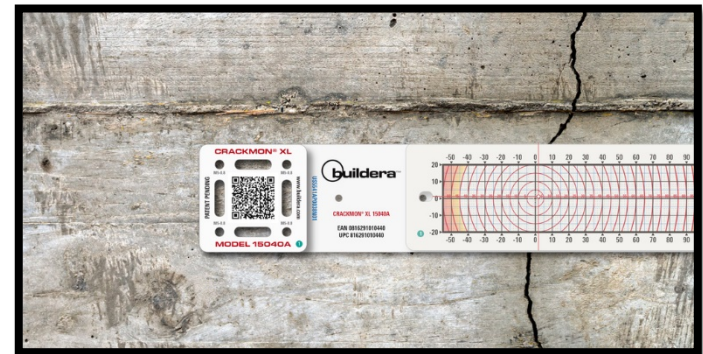
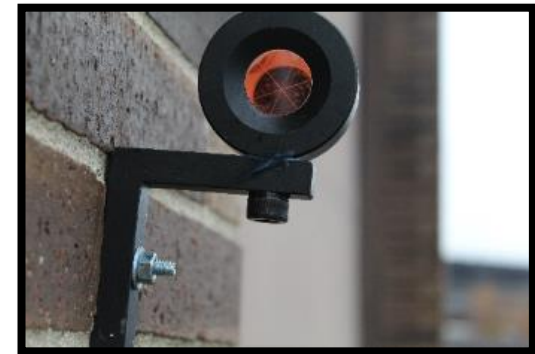
Ball Square

- Hazardous materials abatement to start in December.
- Demolition in early 2019

Project Status

Vibration Monitoring

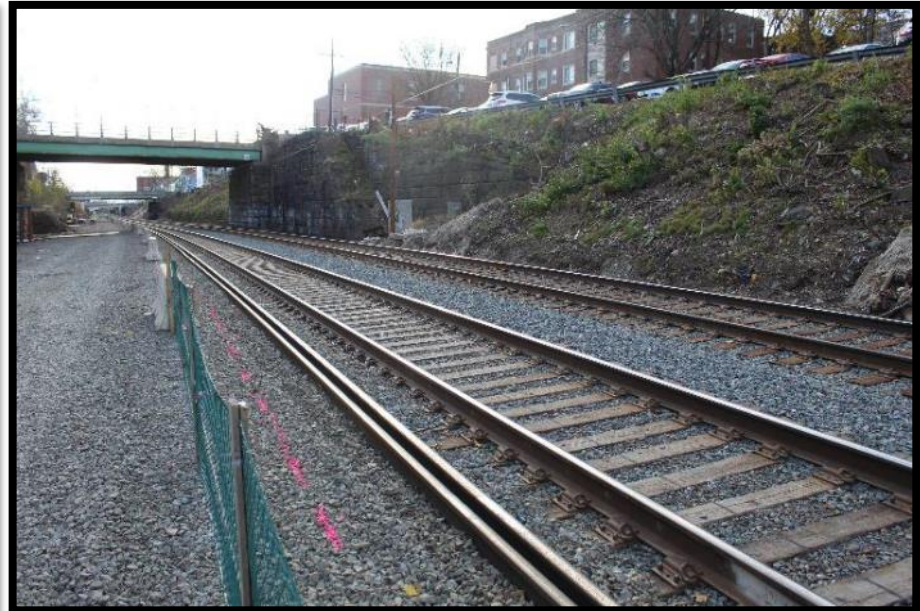
- GZA GeoEnvironmental has been hired to set up vibration and foundation monitoring equipment to ensure work doesn't negatively impact project neighbors



Project Status

Separation Barrier

- Following the track shift new separation barrier in place from College Ave. south to Washington St. except for a few areas where alignment is too narrow.
- Barrier allows workers a safer work zone and increases productivity.



Project Status

Drainage work at Rogers Foam

- Installing new 60" reinforced concrete pipe for stormwater drainage



Project Status

Walls

- Wall removal along Gilman St. (between Walnut & McGrath Hwy.)
- Construction fence will be installed
- Drainage and retaining wall work to follow



Project Status

Pre-Construction Survey

- Peer Consultants is now reaching out to property owners to schedule surveys on the west side of alignment starting in Medford



Project Status

Pest Management

- Weekly baiting and condition monitoring continues.
- Rats continue to be one of the biggest issues raised by those living along the rail alignment.



Project Status

Trash Removal

- With track shift trash removal will continue along east side of alignment
- Additional trash removal on west side of alignment will not progress until 2020 because of fall protection and operating rail line safety requirements



Broadway Bridge Closure Update

Bridge Demolition & Construction

- Target start date of mid-March 2019 for bridge closure
- 12 month demolition and construction schedule

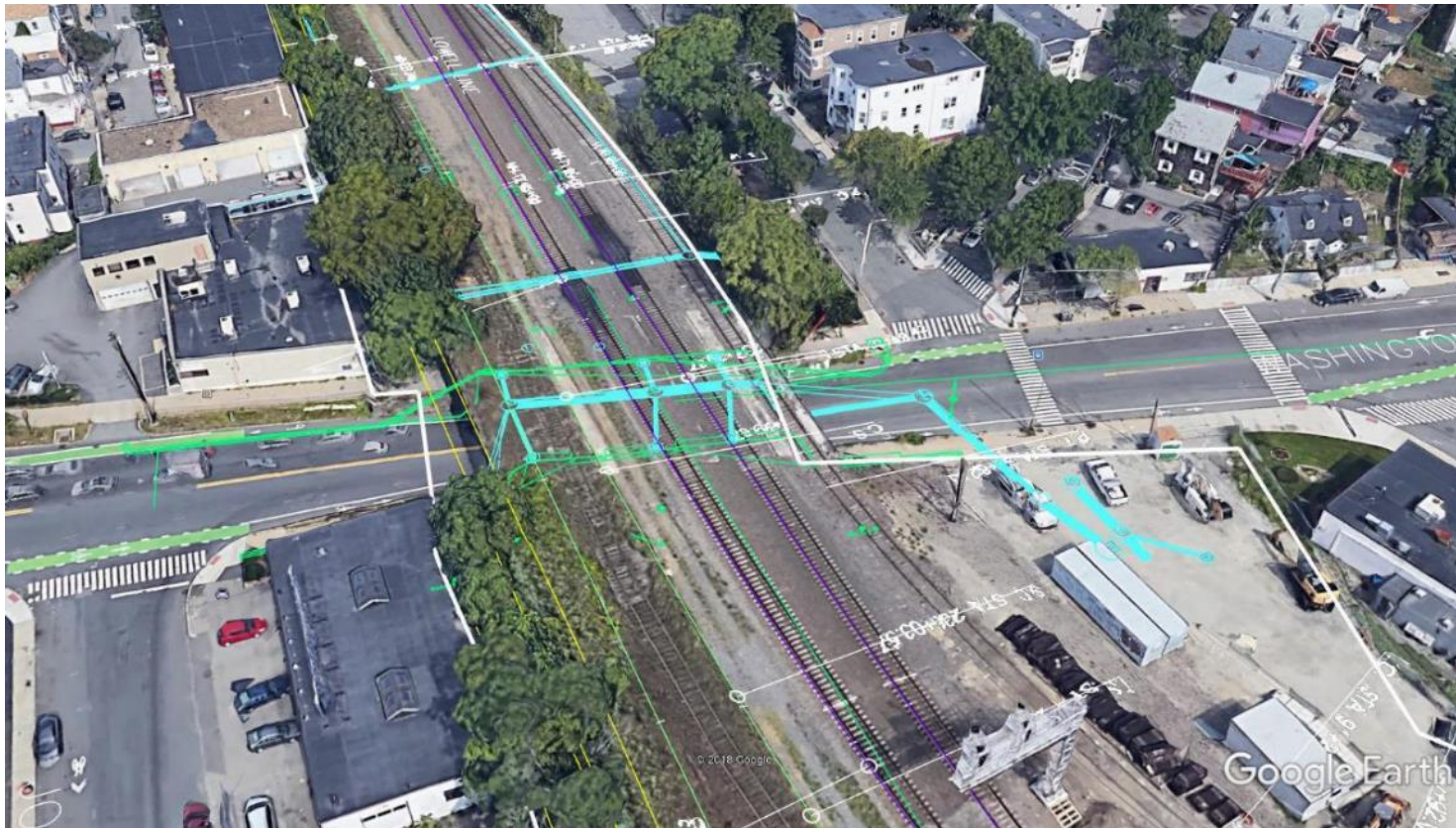


Washington St. Bridge Update

Target Dates:

Phase I Closure – April 2019 to November 2019

Phase II Closure – Spring to Fall 2020



Project Status

Gilman Street Outreach

- Significant outreach in this area in preparation for wall and drainage work.
- Working with neighbors where we have a temporary construction easement.



Project Update

Quarterly First Responders Meeting

- Friday, Nov. 30 at GLXC office

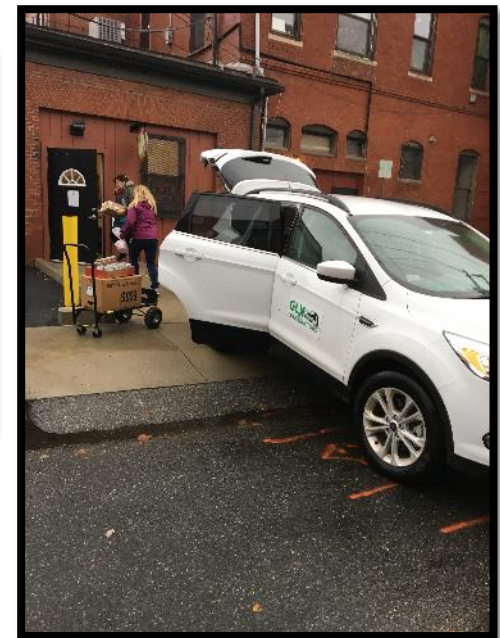


Project Status

GLX Project Community Connection Team

Thanksgiving Food Drive

- 450 lbs of food donated to Somerville Homeless Coalition



Project Status

Team Building Flag Football Game

- Thursday, Nov. 15 at Gold Star Mothers Park
- GLX 14 – GLXC 0





Discussion

Terry McCarthy, GLXC

