



GREEN LINE EXTENSION PROJECT



massDOT
Massachusetts Department of Transportation

1



GLX Community Working Group
Monthly Meeting
February 5, 2019

Agenda

Welcome & Introduction

- Terry McCarthy, GLX – MBTA

Construction Update

- John West, GLXC



January 30th Project Open House



**THANK YOU FOR
PARTICIPATING!**



massDOT
Massachusetts Department of Transportation



January 30th Project Open House



THANKS!



massDOT
Massachusetts Department of Transportation



Broadway Bridge Closure Update

Bridge Demolition & Construction

- Target start – March 2019 for bridge closure
- 12 month demolition and construction schedule

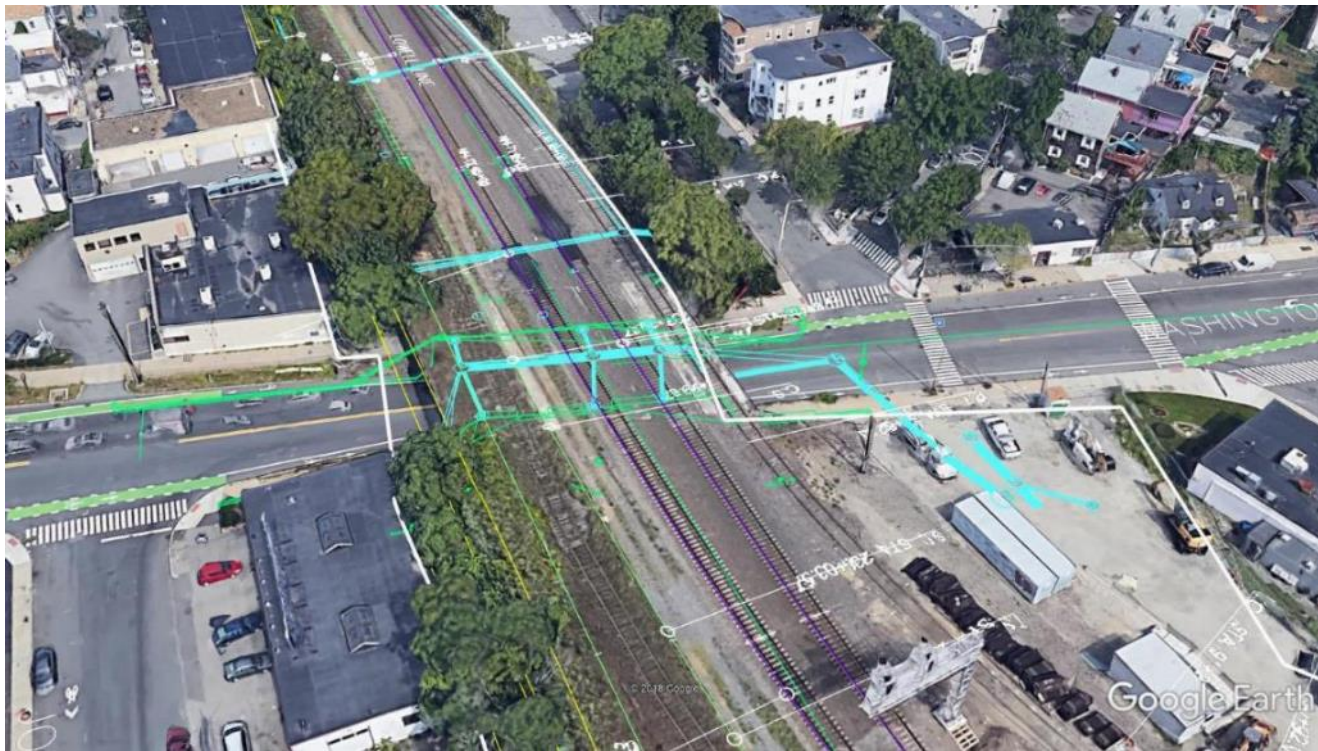


Washington Street Bridge Update

Bridge Demolition & Construction

Phase I Closure – April 2019 to November 2019

Phase II Closure – Spring to Fall 2020



massDOT
Massachusetts Department of Transportation



Bridge Closure – Regional Outreach

Target Audience	Tactics/Approach
<ul style="list-style-type: none">• Commuting public• 96 neighboring cities/towns (>1M People)• 84 media outlets• 29 Hospitals and medical facilities• 26 Colleges/Universities• Chamber of Commerce & large employer database• Regional bus companies• MBTA ridership	<ul style="list-style-type: none">• Variable Message Signs (VMS)• Reboot Your Commute campaign• Email blasts (More than 6400 registered recipients)• MassDOT social media• Public Service Announcements• Municipal websites• News media engagement



Bridge Closure – Regional Outreach



Reboot Your Commute

Green Line Extension (GLX) Project

Bridge Closures Ahead

Three major bridges in Somerville and Medford will be closed during a 16-month period to facilitate GLX project construction. Beginning in March 2019, traffic detours will affect local and regional commutes. Motorists, pedestrians, and bicyclists should plan accordingly.

Broadway Bridge at Ball Square on the Somerville / Medford Line

✖ Closed March 2019 to March 2020

Washington Street Bridge (Underpass) in East Somerville

✖ Closed April 2019 to November 2019 and April 2020 to August 2020

Medford Street Bridge at Gilman Square in Somerville

✖ Closed July 2019 to February 2020

See planned detour routes on following pages

For further info and constant updates go to www.greenlineextension.org

Or email us at info@glxinfo.com

For urgent matters, dial 1-855-GLX INFO or 1-855-459-4636

Green Line Extension (GLX) Project | 200 Inner Belt Road, Somerville, MA 02143 | 1 (855) GLX-INFO (459-4636) www.greenlineextension.org



GLX Community Working Group
Monthly Meeting
February 5, 2019

Bridge Closure – Local Outreach

- Community Working Group (15 consecutive monthly meetings to date)
- GLX website updates
- Email Blasts (>6300 registered)
- Automated phone calls
- Door to door leafletting
- Sandwich Boards
- Public Meetings
- City Traffic Engineers & First-Responders (regular meetings)
- Detailed police officers
- Continued Tabling Events (16 events, 2200 engagements)



Bridge Closure Outreach





GLX-C Construction Update

John West



Project Status

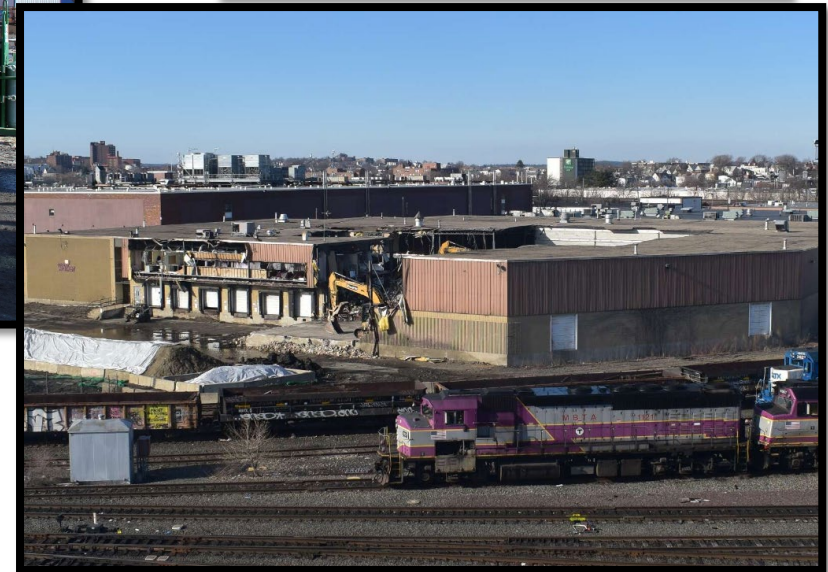
Safety

- Safety Recognition at All Hands Meeting on Jan. 23
- 9 workers recognized for safety



Project Status

Demolition Update



3rd Avenue

- Demolition underway at Walker Building
- Expected to be complete by late February

Project Status

Demolition Update

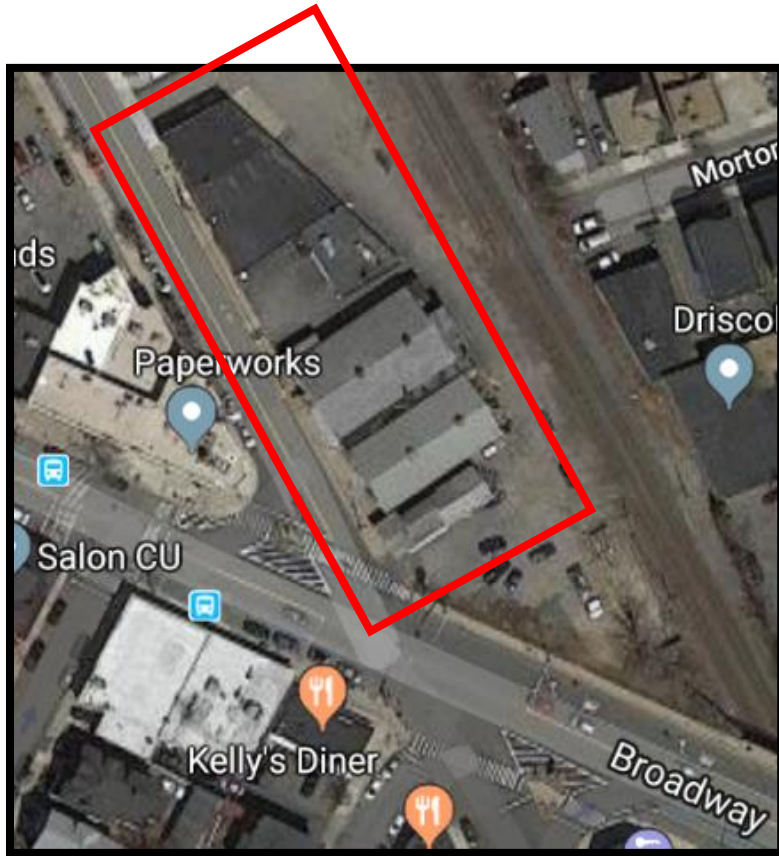
Homans Building

- Utility isolation confirmed complete
- Vibration monitoring equipment in place



Project Status

Demolition Update



Ball Square

- Demolition to begin after Homans Building demo (Trending March/April)
- Debris to be segregated & recycled

Project Status

Multipurpose Machine (MPM) is here!

- Safety training for workers underway



Project Status

Drainage work at Rogers Foam

- Installing new 60" reinforced concrete pipe for stormwater drainage
- Making faster progress getting through rock



Project Status

Walls

- Steel wall removal along Gilman St. (between Walnut & McGrath Hwy.) Complete!
- Noise wall (N-6) construction underway



Project Status

Walls (Noise Barrier N-15)

- N-15 Noise Wall north of College Ave.



Project Status

Community Connection Team

- Aaron Neeley Bridges to Prosperity in Avispas, Bolivia





Discussion

Terry McCarthy, GLXC





GREEN LINE EXTENSION PROJECT



massDOT
Massachusetts Department of Transportation

22



GLX Community Working Group
Monthly Meeting
February 5, 2019