



GREEN LINE EXTENSION PROJECT



massDOT
Massachusetts Department of Transportation

1



GLX Community Working Group
Monthly Meeting
March 5, 2019

Agenda

Welcome & Introduction

- Terry McCarthy, GLX – MBTA

Construction Update

- John West, GLXC

Construction Sequencing – Broadway Bridge

- T.J. Steinhilber, GLXC

Public Outreach Update

- Terry McCarthy, GLX – MBTA



Welcome to the Steve Taylor Conference Room





GLX-C Construction Update

John West



massDOT
Massachusetts Department of Transportation



Project Status

Pre-Construction Survey – Safety Follow-up

- Peer Consultants Workers are now wearing GLX-C branded safety vests



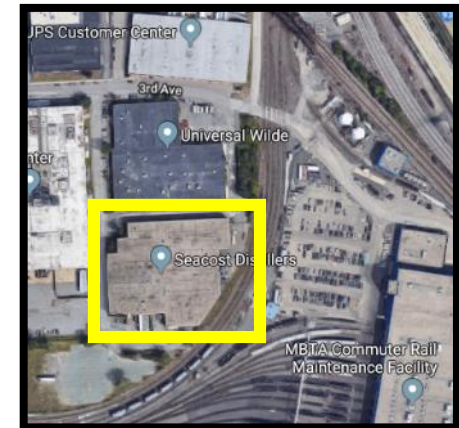
Project Status

Demolition Update



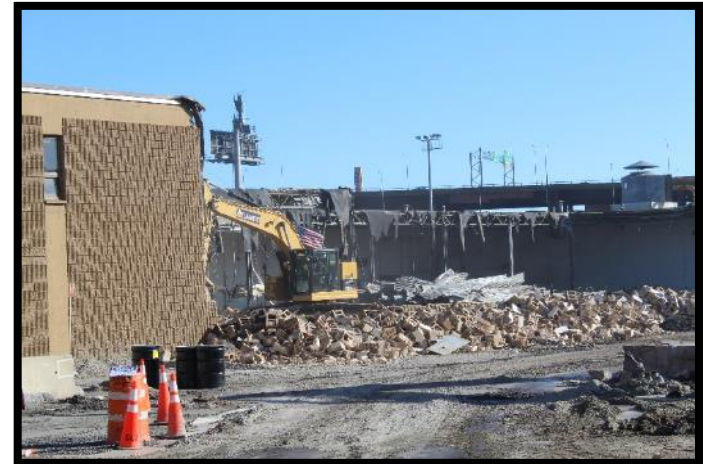
3rd Avenue

- Demolition of the Walker Bldg. (20 3rd Ave.) COMPLETE!



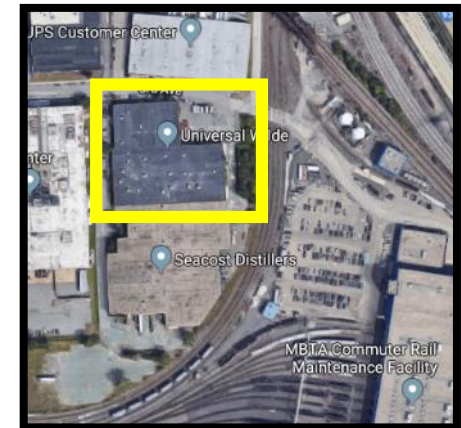
Project Status

Demolition Update



3rd Avenue

- Demolition of ACPA Bldg. (48 3rd Ave.) will wrap up later this month



Demolition Update

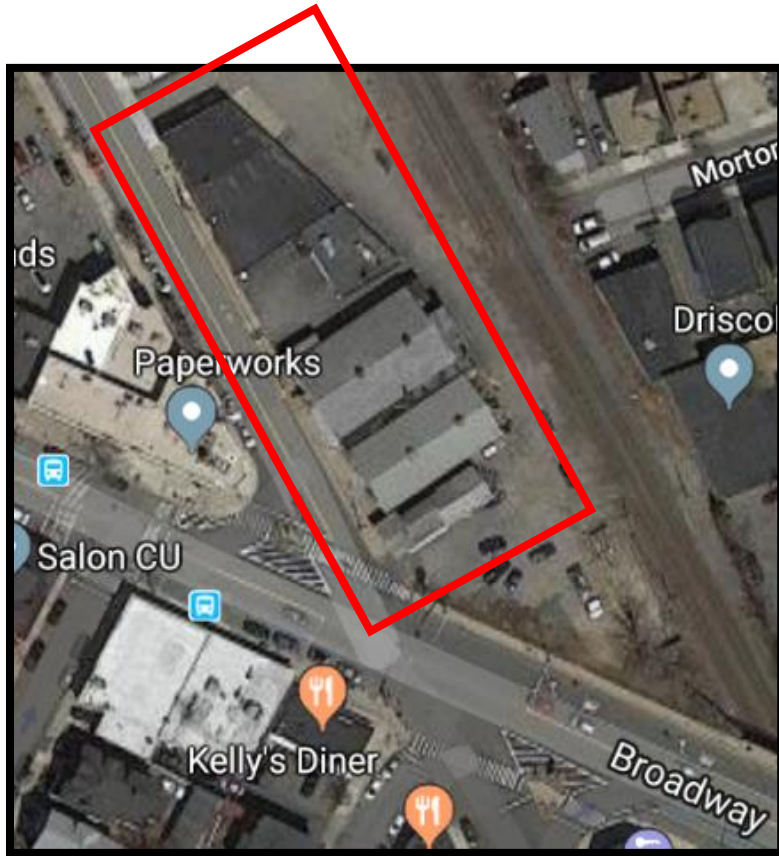
Homans Building

- Atlantic Demolition will mobilize week of March 18 or 25
- Demolition will begin on the track side of the building, working towards Medford Street
- A weekend street closure of Medford Street is anticipated in late March / early April to facilitate demolition of the building façade along Medford Street
- Once the façade is down, road will be reopened and debris will be loaded out



Project Status

Demolition Update



Ball Square

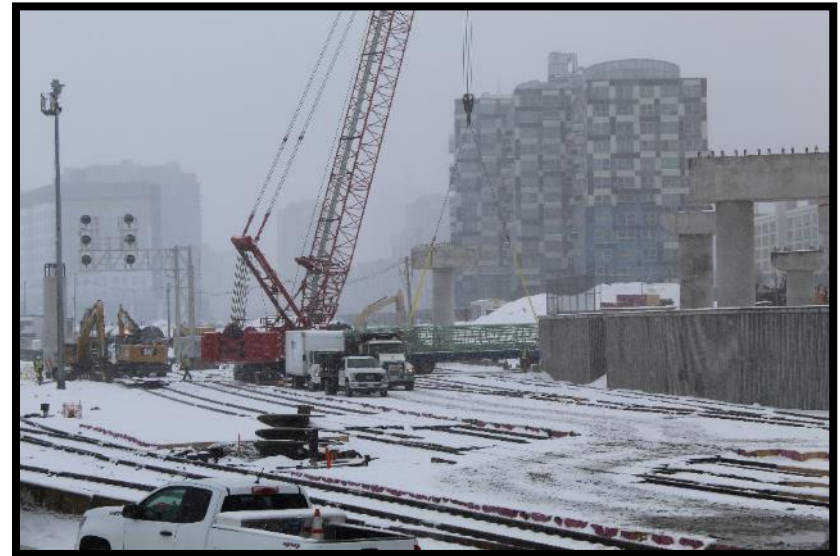
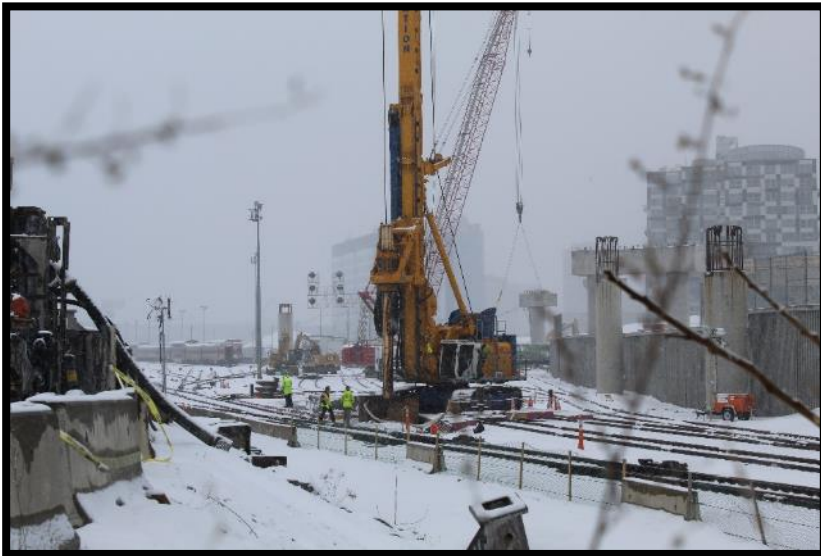
- Demolition to begin after Homans Building demo (Trending March/April)
- Debris to be segregated & recycled

Project Status

Upcoming Weekend Commuter Rail Outages will help construction with upcoming project activities including:

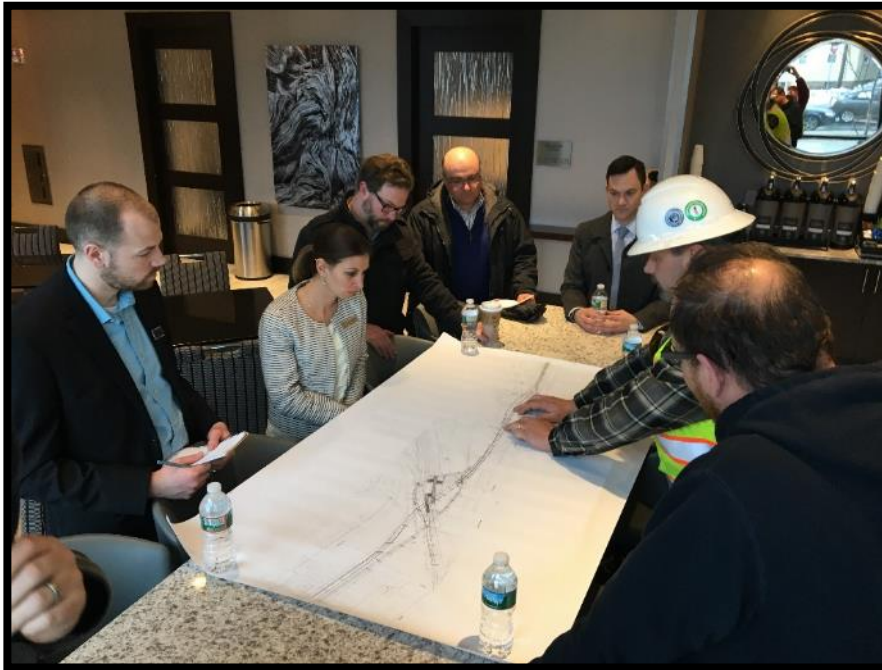
- Viaduct work near Lechmere Station/ Boston Engine Terminal (BET)
- Bridge demolition

Foundation Work at Boston Engine Terminal (BET)



Project Status

Construction Briefings for Property Owners & Managers near Lechmere Station



Project Status

Multipurpose Machine (MPM)



Photos courtesy of Tim Dineen

Project Status

Drainage work at Rogers Foam

- Installing new 60" reinforced concrete pipe for stormwater drainage
- Making faster progress getting through rock



Photo courtesy of Tim Dineen

Project Status

Walls

Noise Wall N-6 (Gilman Street between Walnut St. and McGrath Hwy.)

- Steel wall removal complete
- New wall construction underway
- Drilling for piles to be completed this week



Project Status

Walls

Retaining Wall ME-2 (Between Cedar St. and Charles E. Ryan Rd, behind Somerville Department of Public Works)

- Construction underway



Project Status

Walls

Retaining Wall ME 2.4 (Granville Ave. to Broadway)

- Drill rig will mobilize in the area soon to support placement of piles



Project Status

Walls

Noise Barrier N-15 (Benham St. to College Ave.)

- Drill rig to mobilize in this area soon to support pile placement



Broadway Bridge Closure Update

Bridge Demolition & Construction

- Bridge closure March 22, 2019
- 12 month demolition and construction schedule



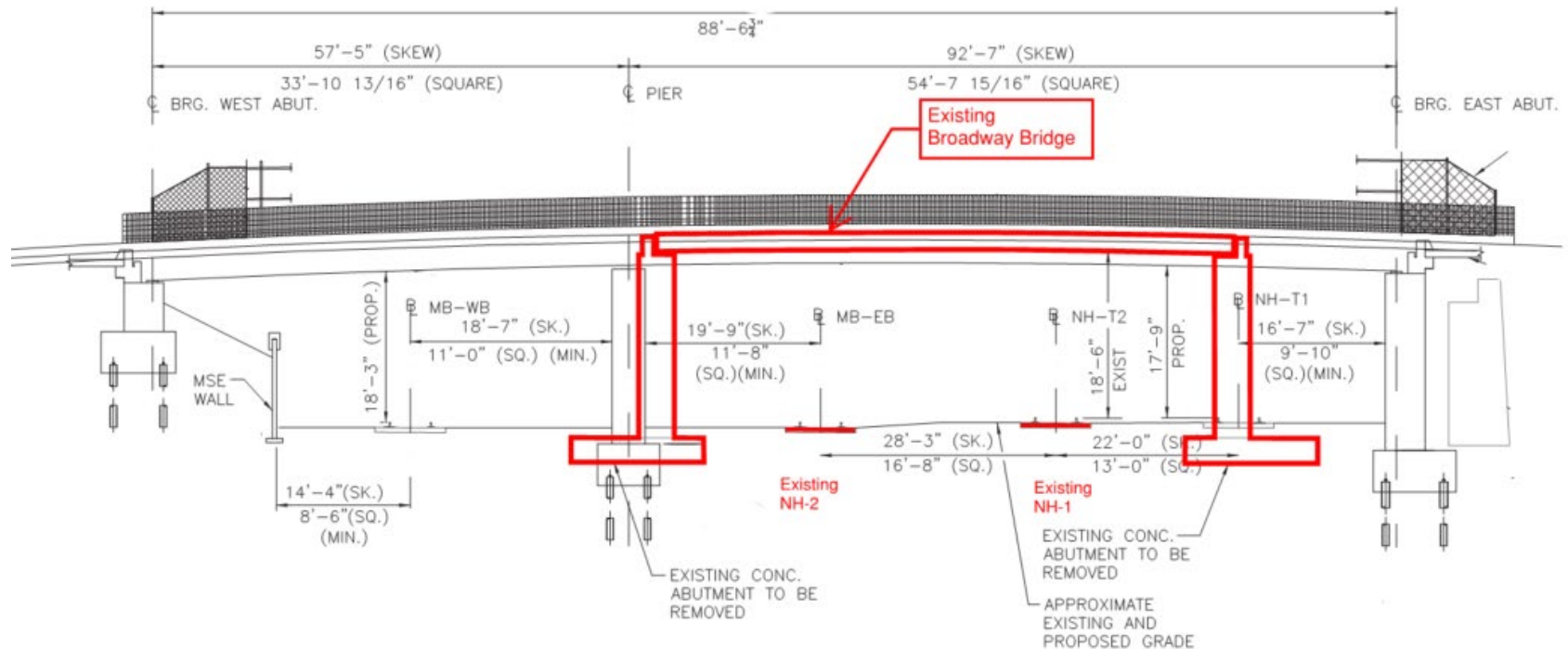


GLX-C Construction Update

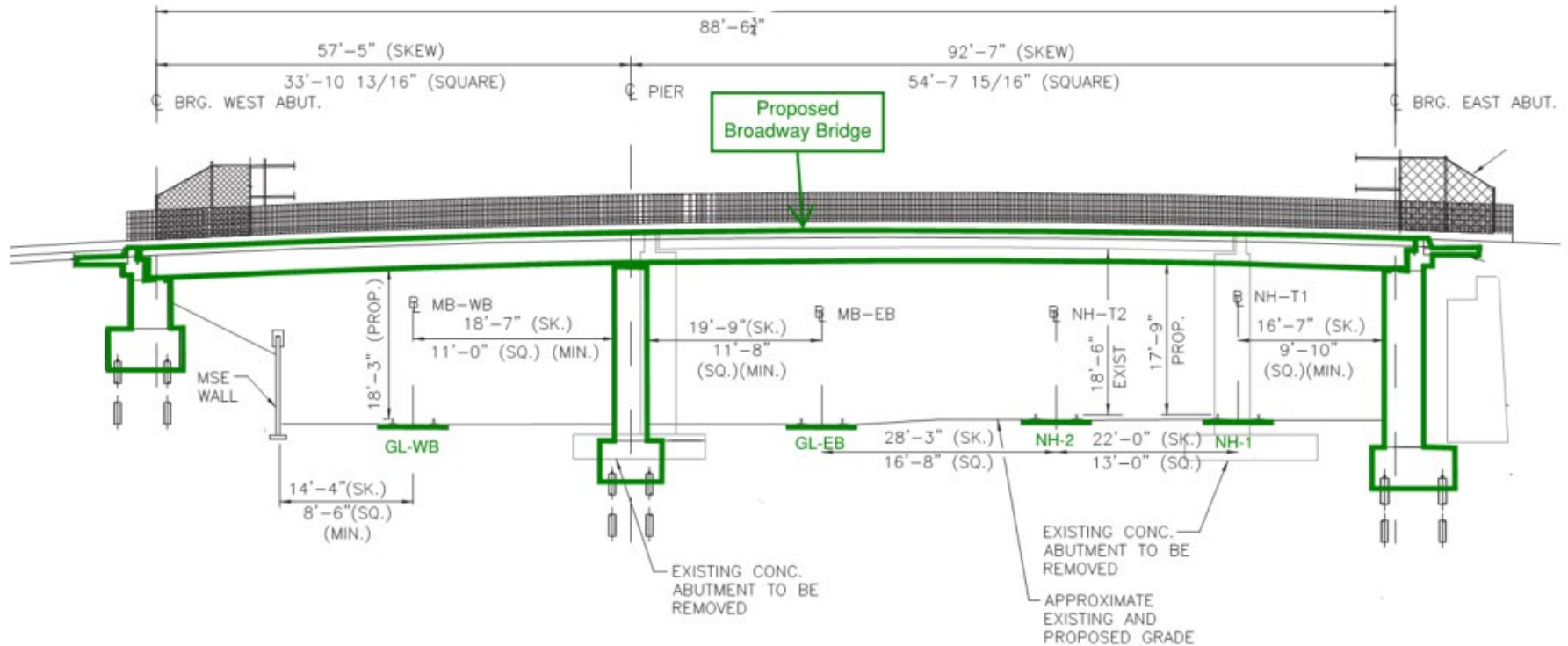
T.J. Steinhilber, GLXC



Broadway Bridge Construction Overview



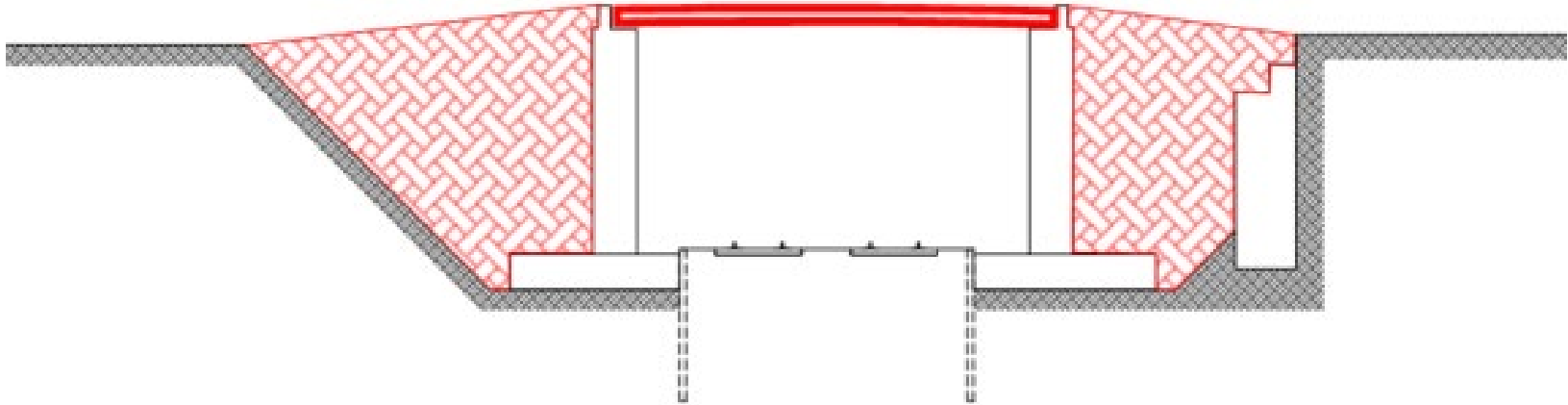
Broadway Bridge Construction Overview



Broadway Bridge Construction Overview

Bridge Demolition & Support of Excavation Installation

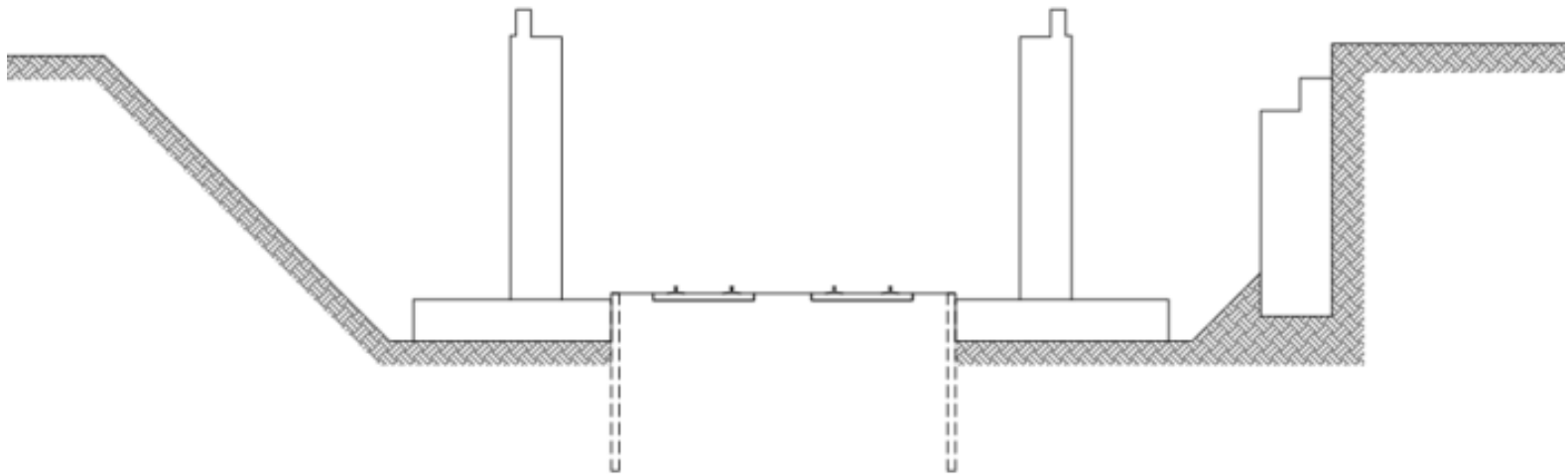
- Existing Condition



Broadway Bridge Construction Overview

Bridge Demolition & Support of Excavation Installation

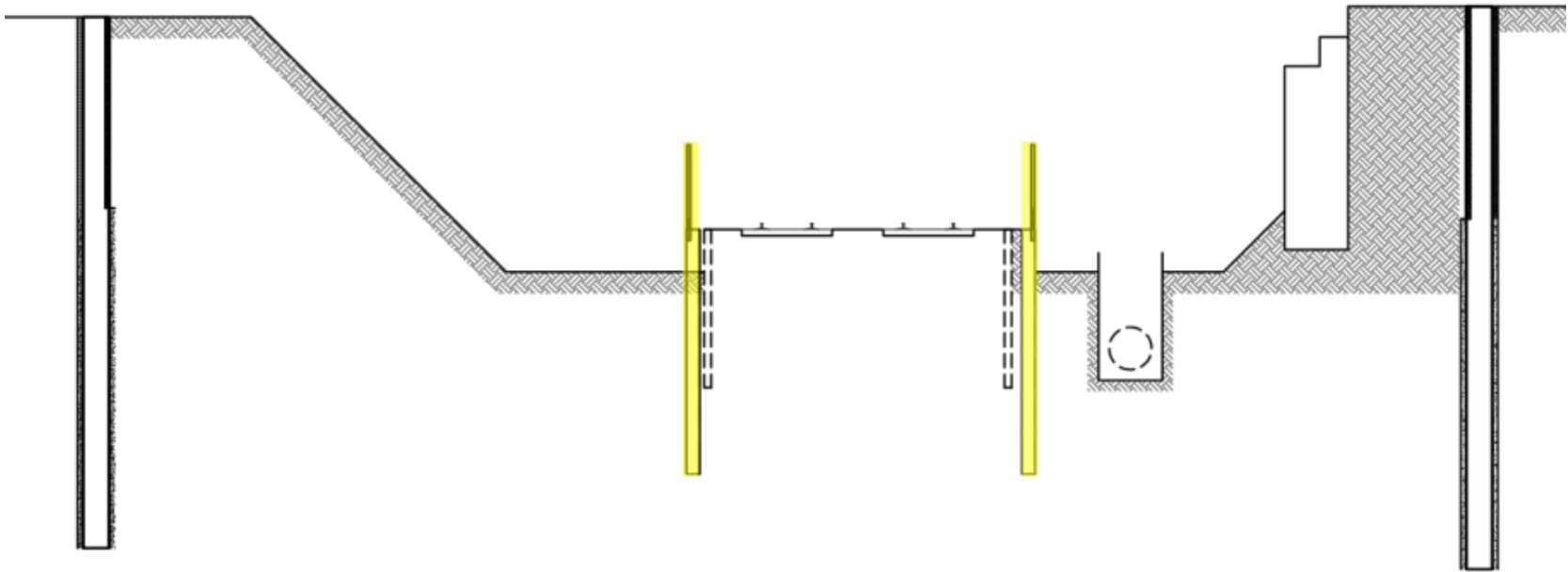
- Step 1: Demolition of Superstructure and partial excavation for existing substructure demolition.
 - Time frame: Late March 2019 – Early April 2019



Broadway Bridge Construction Overview

Bridge Demolition & Support of Excavation Installation

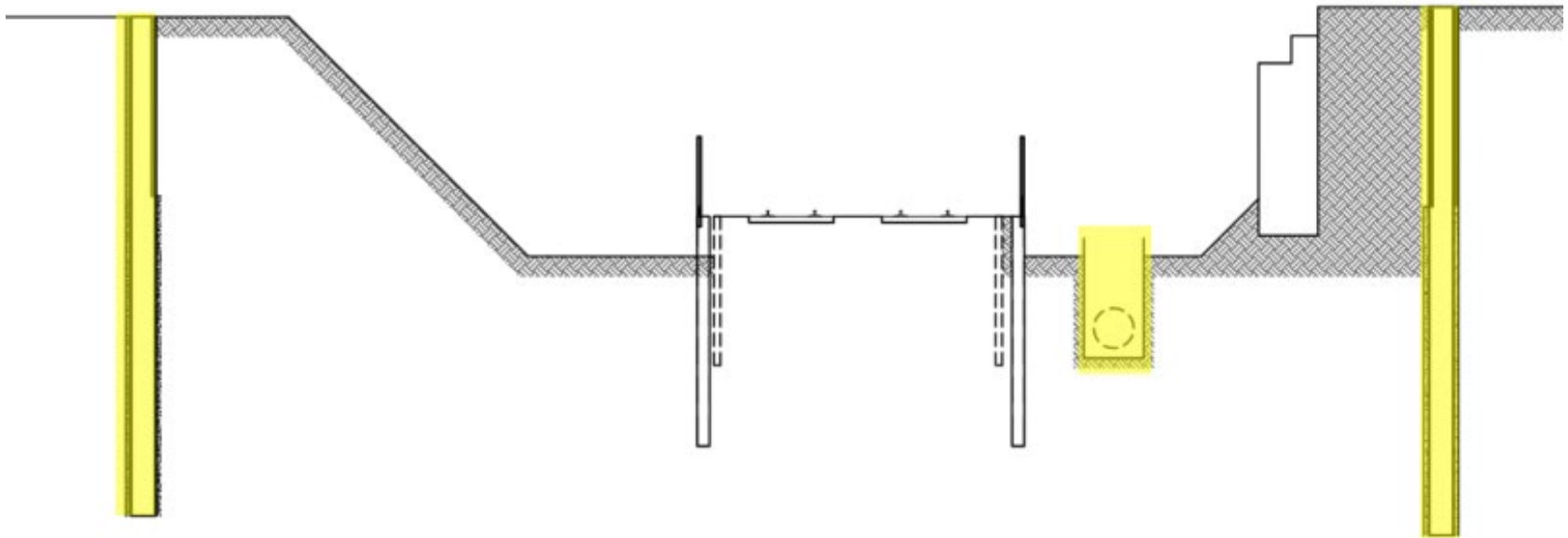
- Step 3: Installation of track level sheet piles
 - Time frame: Late March 2019 – Early April 2019



Broadway Bridge Construction Overview

Bridge Demolition & Support of Excavation Installation

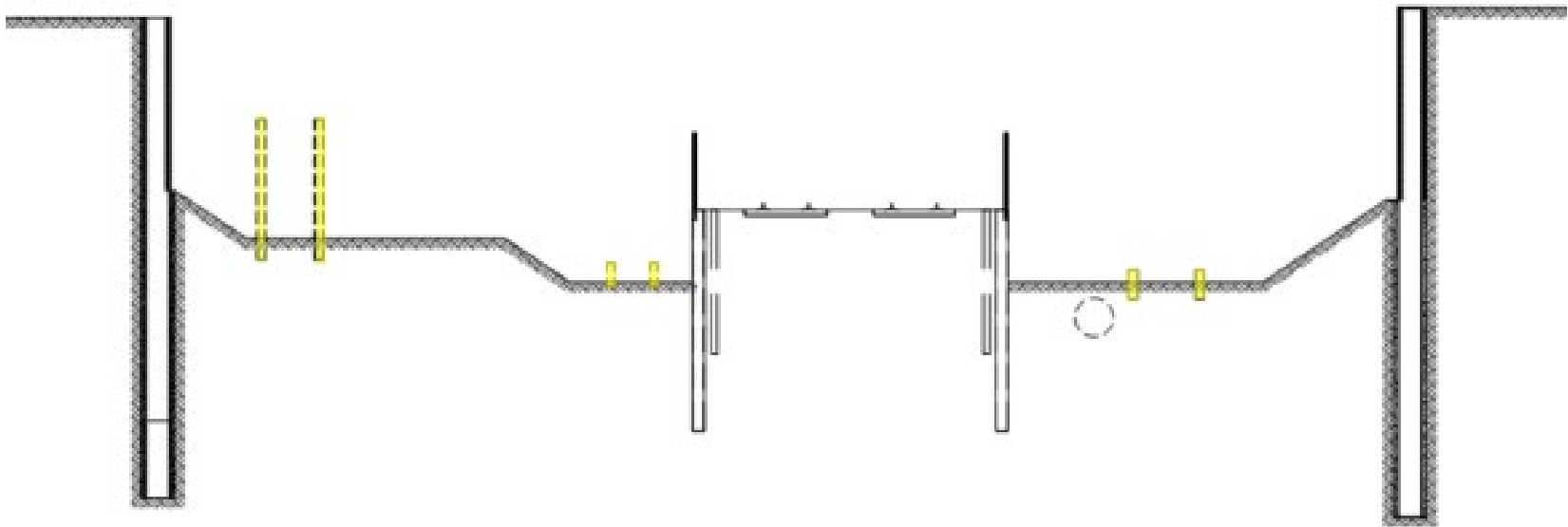
- Step 4: Installation of Support of Excavation system and track level drainage installation
 - Time frame: Mid April 2019 – May 2019



Broadway Bridge Construction Overview

Bridge Demolition & Support of Excavation Installation

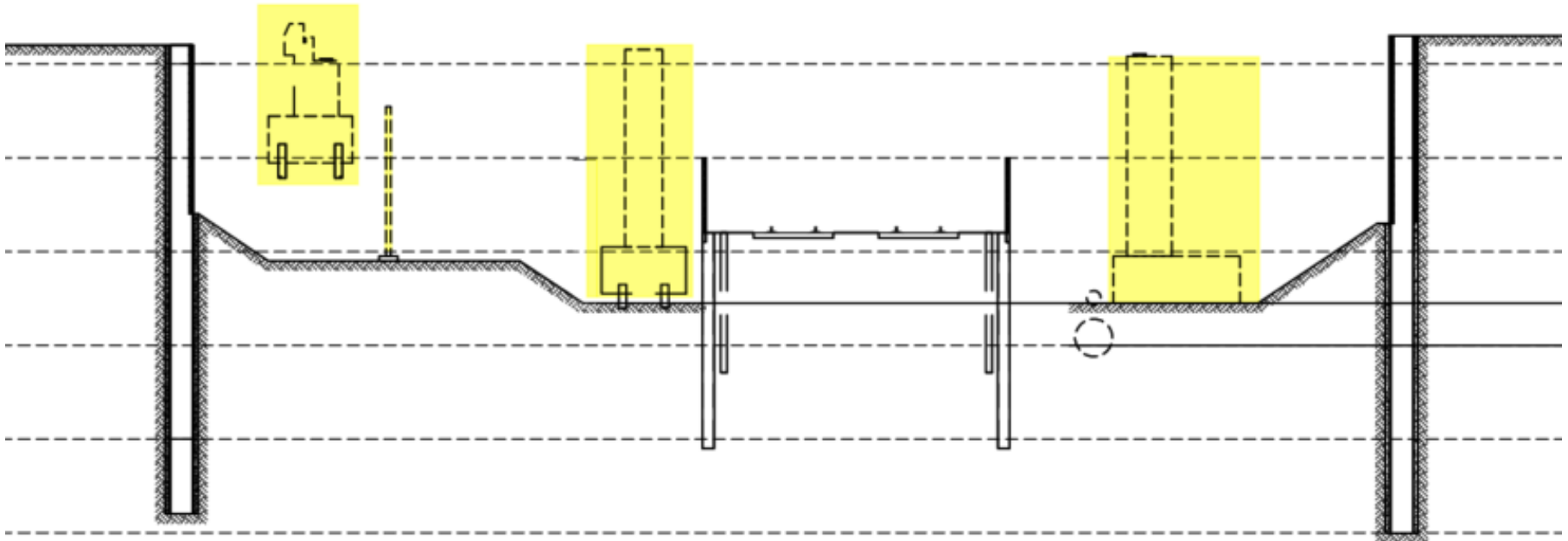
- Step 4: Additional excavation and Micropile foundation installation
 - Time frame: May 2019 – July 2019



Broadway Bridge Construction Overview

Bridge Demolition & Support of Excavation Installation

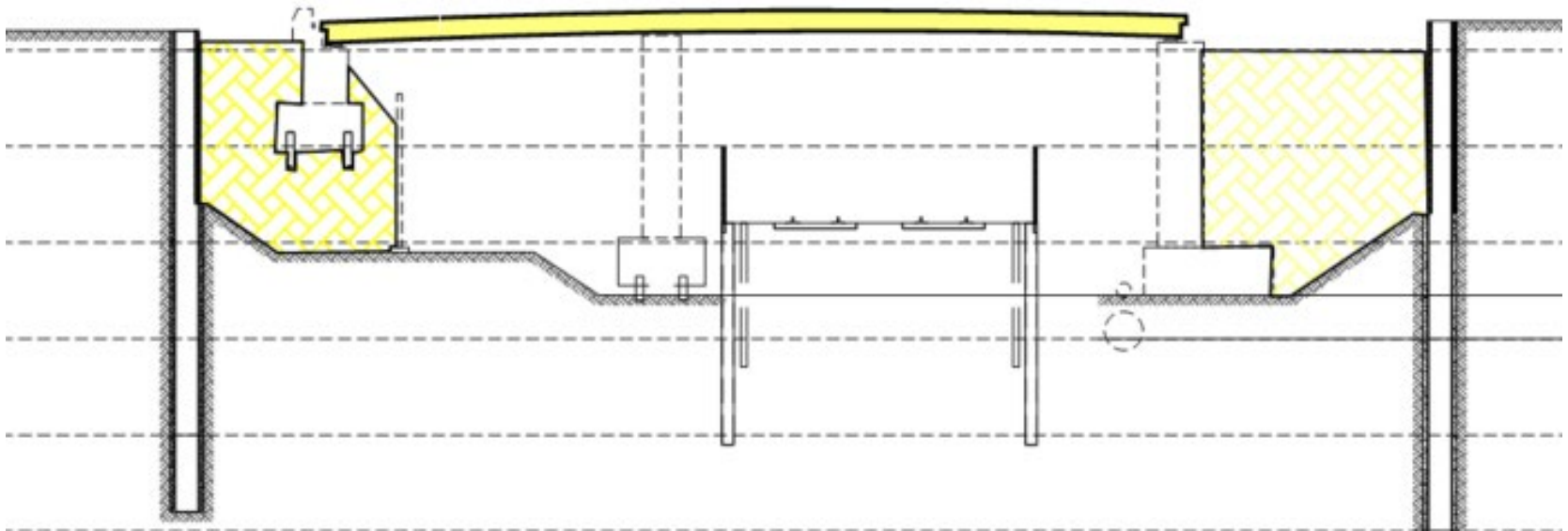
- Step 5: Substructure installation and MSE Wall Construction
 - Time frame: July 2019 – October 2019



Broadway Bridge Construction Overview

Bridge Demolition & Support of Excavation Installation

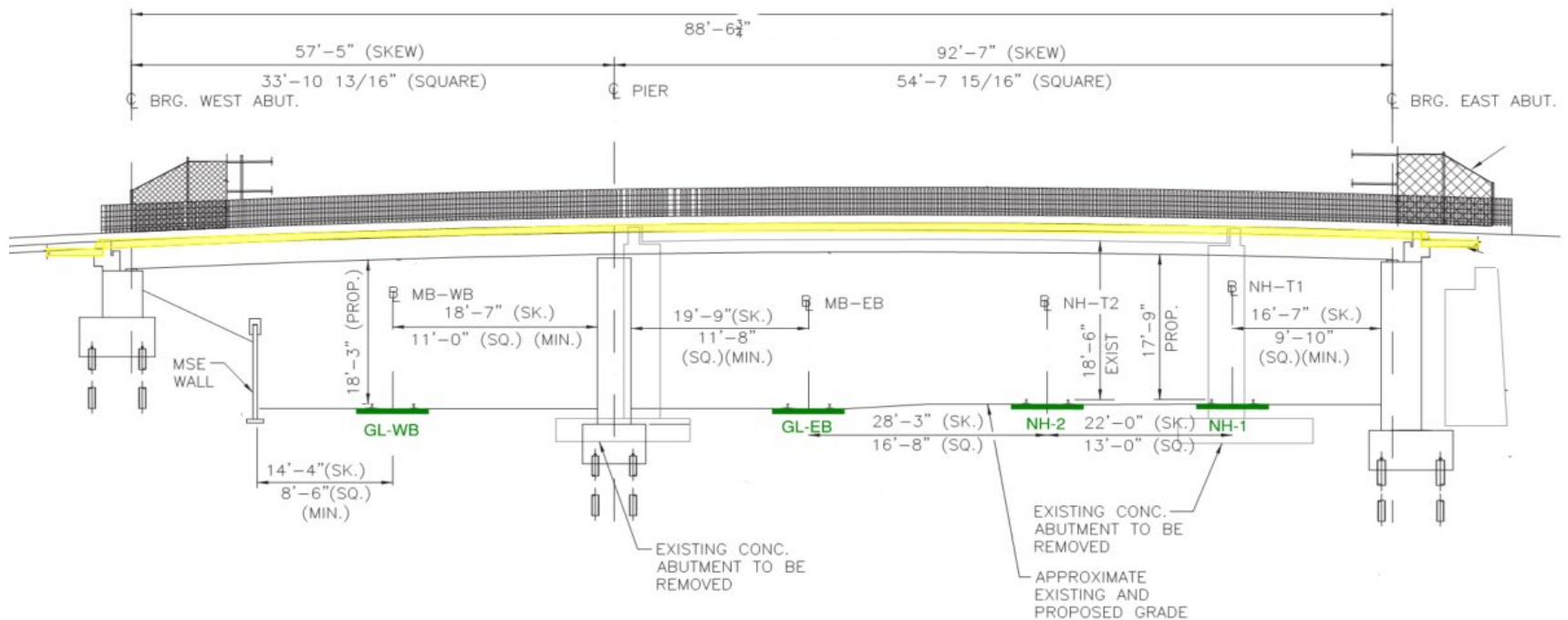
- Step 6: Fill Abutments/MSE Walls, Install Bearing Pads and Install Superstructure Steel
 - Time frame: October 2019 – December 2019



Broadway Bridge Construction Overview

Bridge Demolition & Support of Excavation Installation

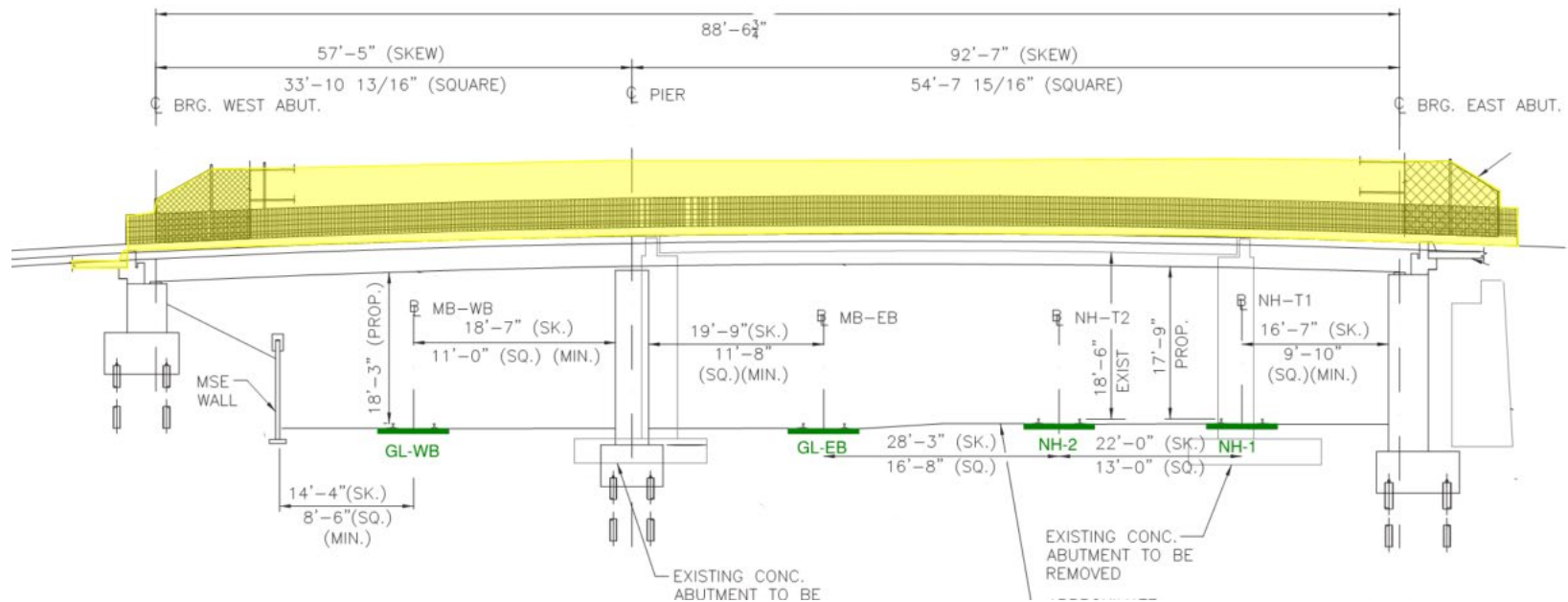
- Step 7: Pour Deck, Approach Slabs, Set anchor bolts for superstructure rails and fencing. Start Civil work: Tie into existing Broadway and Boston Ave.
 - Time frame: December 2019 – January 2020



Broadway Bridge Construction Overview

Bridge Demolition & Support of Excavation Installation

- Step 8: Pour sidewalk, Install railings and fence. Continue civil installation.
 - Time frame: January 2020– February 2020





Local & Regional Outreach Update

Terry McCarthy, MBTA

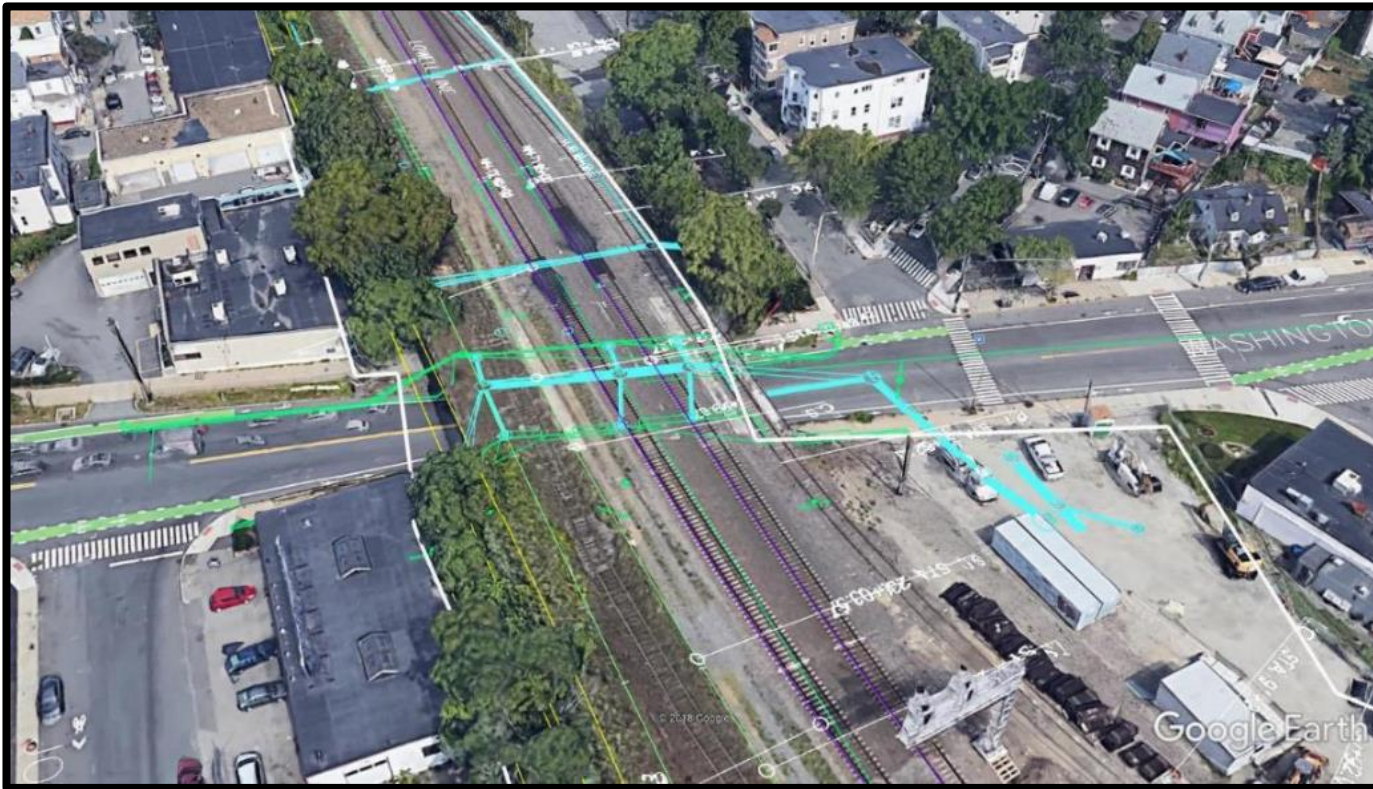


Washington St. Bridge Closure Update

Bridge Demolition & Construction

Phase I Closure – April 2019 to November 2019

Phase II Closure – Spring to Fall 2020



Washington St. Bridge Closure Update

Washington St. Closure at Rail Overpass



Washington St. Bridge Closure Update

Washington St. Closure at Rail Overpass



Bridge Closures – Regional

Target Audience

- Commuting public
- 96 neighboring cities/towns (>1M People)
- 84 media outlets
- 29 Hospitals and medical facilities
- 26 Colleges/Universities
- Chamber of Commerce & large employer database
- Regional bus companies
- MBTA ridership

Tactics/Approach

- ✓ Variable Message Signs (VMS)
- ✓ Reboot Your Commute campaign
- ✓ Email blasts (More than 6500 registered recipients)
- ✓ MassDOT social media
- ✓ Municipal websites
- ✓ News media engagement



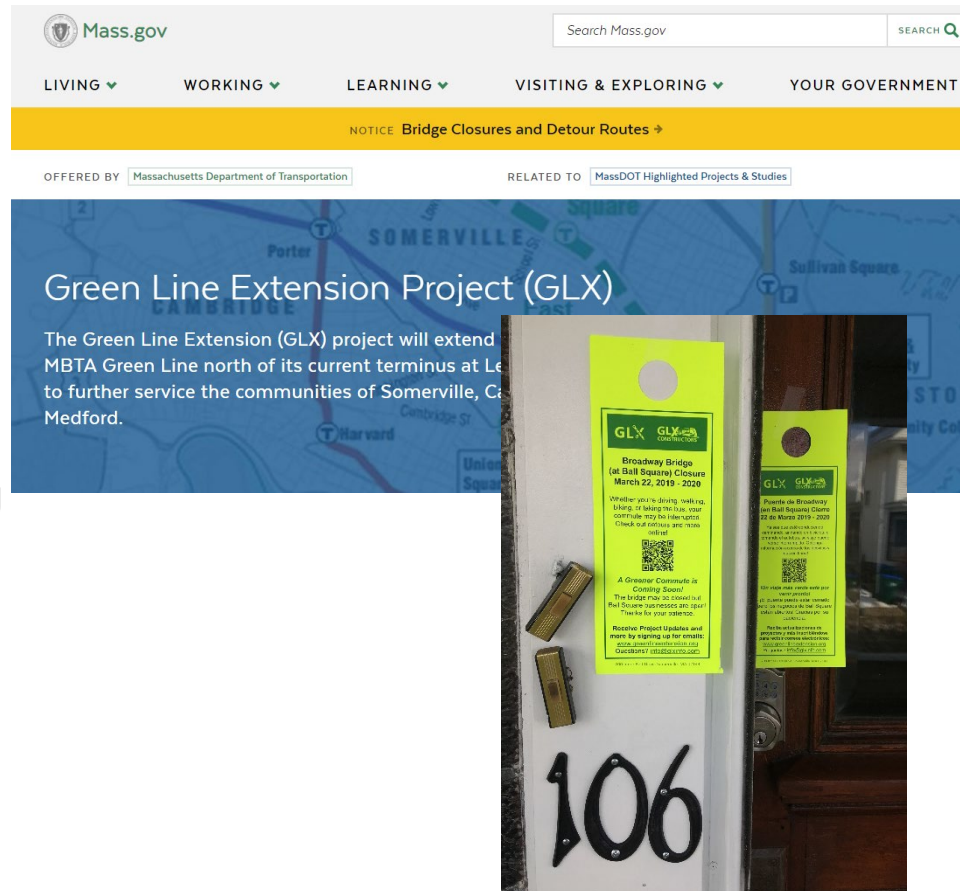
Bridge Closures – Local

- ✓ Community Working Group (15 consecutive monthly meetings to date)
- ✓ GLX website updates
- ✓ Email Blasts (>6500 registered)
- ✓ Automated phone calls
- ✓ Door to door leafletting
- ✓ Sandwich Boards
- ✓ Public Meetings
- ✓ City Traffic Engineers & First-Responders (regular meetings)



Bridge Closures – To Date

- GLX website updates
 - <https://www.mass.gov/info-details/bridge-closures-glx-project>
- Email Blast to Gov Delivery List, Regional Database
- Upcoming Local Briefings
 - Medford Public Meeting for Businesses
 - Somerville Business Office Hours
 - Cambridge Follow Up Public Meeting
 - Charlestown Neighborhood Briefing
- Coordination Briefings
 - Boston Transportation Department
 - MassDOT District 6 Construction



Bridge Closures

Broadway Bridge Closure

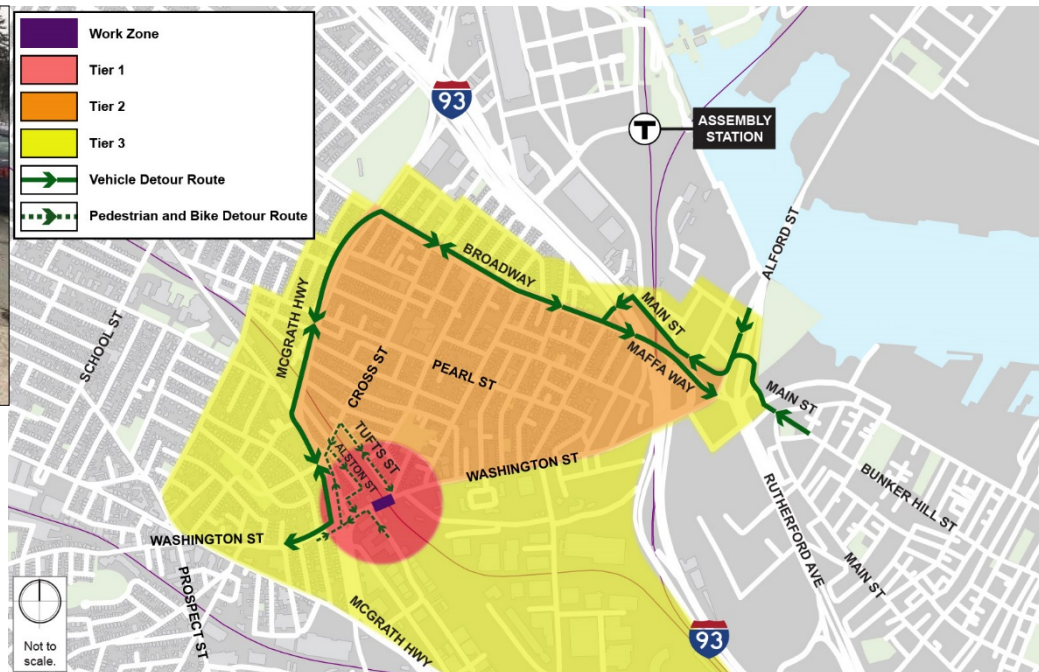
- Business Outreach Feb. 11 – 12
 - 210 packets distributed
- Residential Outreach Feb. 21 – present (finishing this week)
 - 2260 door hangers so far
 - 85 abutter specific notices



Bridge Closures

Washington St. Closure at Rail Bridge Underpass

- Business Outreach Feb. 14 – 19
 - 450 packets distributed to almost 300 businesses
- Residential Outreach starts next week



Project Status

Community Connection Team

- Feb. 28 helped the Medford Family Network deliver beds and other furniture to a family in need



Discussion

Terry McCarthy, GLXC





GREEN LINE EXTENSION PROJECT



massDOT
Massachusetts Department of Transportation

43



GLX Community Working Group
Monthly Meeting
March 5, 2019