



# GREEN LINE EXTENSION PROJECT



**massDOT**  
Massachusetts Department of Transportation



GLX Community Working Group  
Monthly Meeting  
August 4, 2020

# Agenda

---

## Welcome & Introduction

- Marty Nee (For Terry McCarthy, MBTA, who is on vacation)

## Construction Update

- Jeff Wagner, GLXC Public Involvement Manager





# GLXC Construction Update



# Safer Together

- Jose Manzueta (United Site Services) recognized for safe work and customer satisfaction
- Construction active across nearly all segments of the project
- COVID-19, GLX workers continue to meet the challenges posed by a variety of working conditions





# Station Construction - Union Square Station

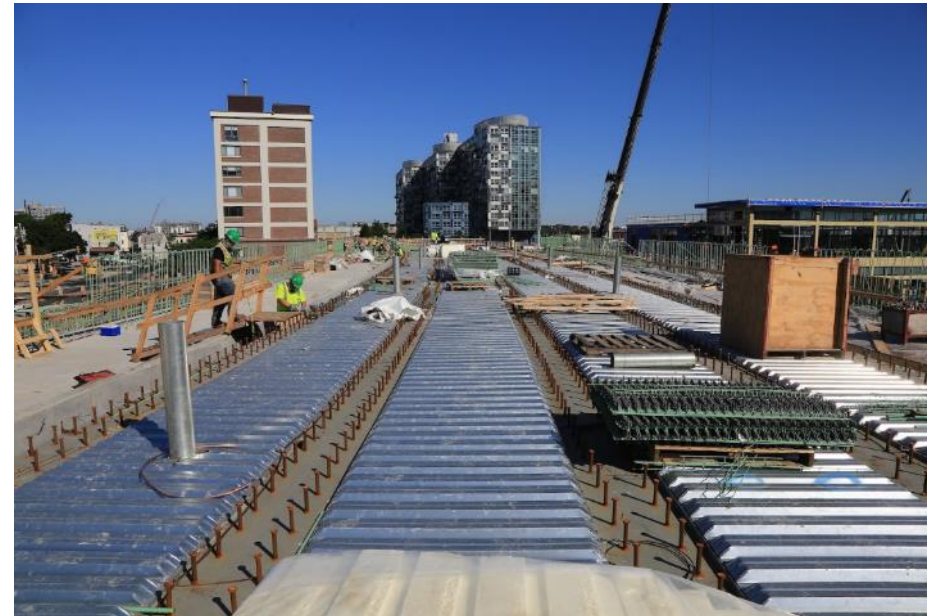
- Station platform is poured
- Steel canopy installation will begin this month
- Mechanical building (left photo) supports mechanical & electrical systems



# Station Construction – Lechmere Station



- Station construction well underway
- Block shell for the north and south headhouses well underway
- Platform concrete pour on or about Aug. 10

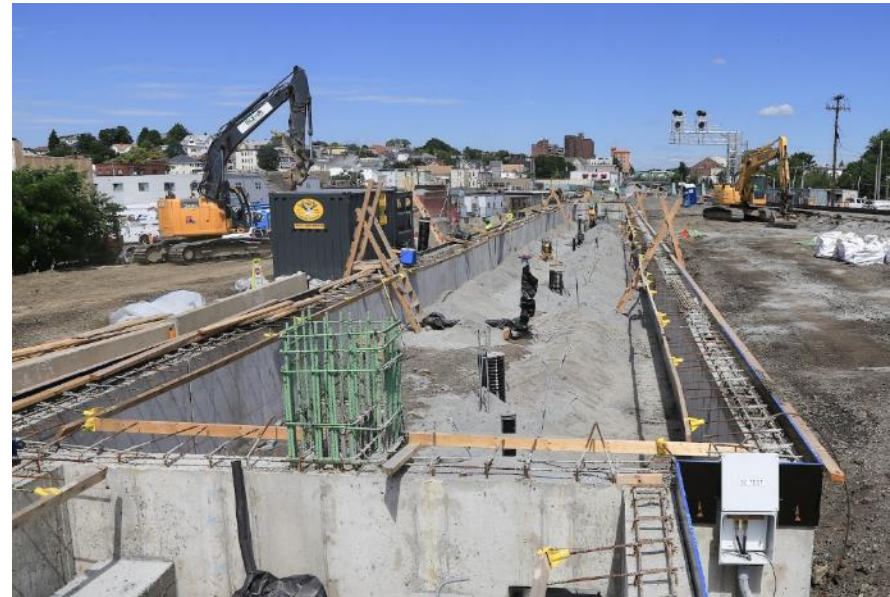
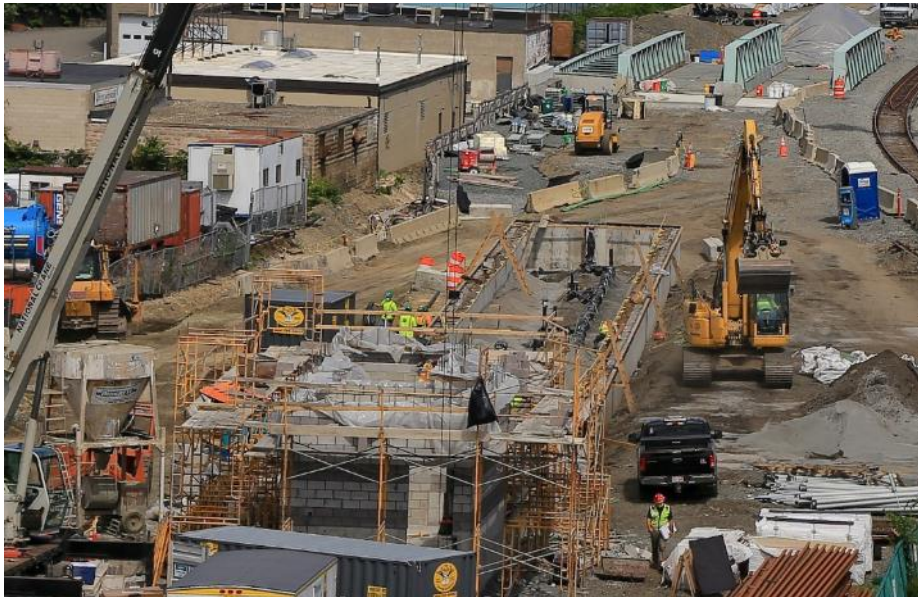




# Station Construction – East Somerville Station



- Station construction well underway
- Platform pour the end of this week
- Steel for canopy expected to arrive by early fall



# Station Construction – Gilman Square Station



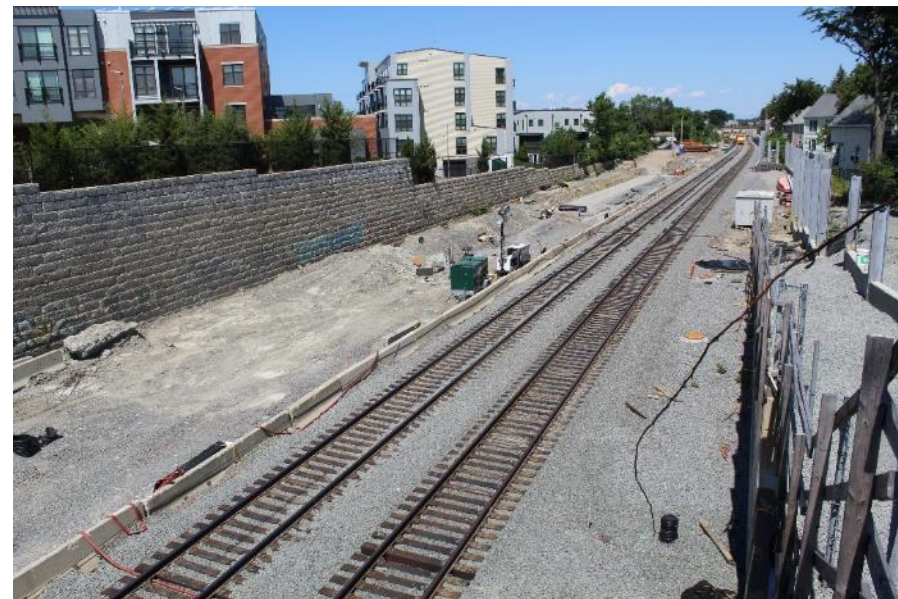
- Station construction in beginning stages
- Platform foundation work has started as has work on south headhouse
- Expect steel for the elevator by early fall





# Station Construction – Magoun Square Station

- Station construction in beginning stages
- Platform concrete pour planned for August
- 150-foot pedestrian bridge expected to arrive by late 2020



# Station Construction – Ball Square Station

- Station foundation is progressing
- Building around existing utilities has been a challenge
- Extensive coordination with cities and utility companies





# Station Construction – Medford/Tufts Station

- Station work has begun
- Wall work to precede the advancement of the station
- Platform expected to take shape by early fall





# Traction Power Substation Construction – Red Bridge

- Approximately 60 percent complete
- Next steps including roughing in interior and installing DC traction power gear



# Traction Power Substation Construction – Gilman Square

- Approximately 15 percent complete
- Building now has walls. Roof and interior work to follow.





# Traction Power Substation Construction – Ball Square

- Approximately 60 percent complete
- Interior rough in work underway





# Overhead Contact System (OCS) Status

- 800 OCS poles to be installed
- By fall, all OCS posts are expected to be in place along Union Square Branch with installation starting on Medford Branch



# Signal House Update

- 2 of 4 signal houses along Union Square Branch have successfully completed Factory Acceptance Testing (FAT). Remaining 2 will be tested this month.
- 5 signal houses along the Medford line
- First signal house on Medford branch expected by early fall



Example of signal house on viaduct



Example of signal house along tracks

# Track Status – Union Square Branch



- Installation of signal cable trough to begin in August
- Building up track bed imminent
- Track placement along Union Square Branch by late summer/early fall

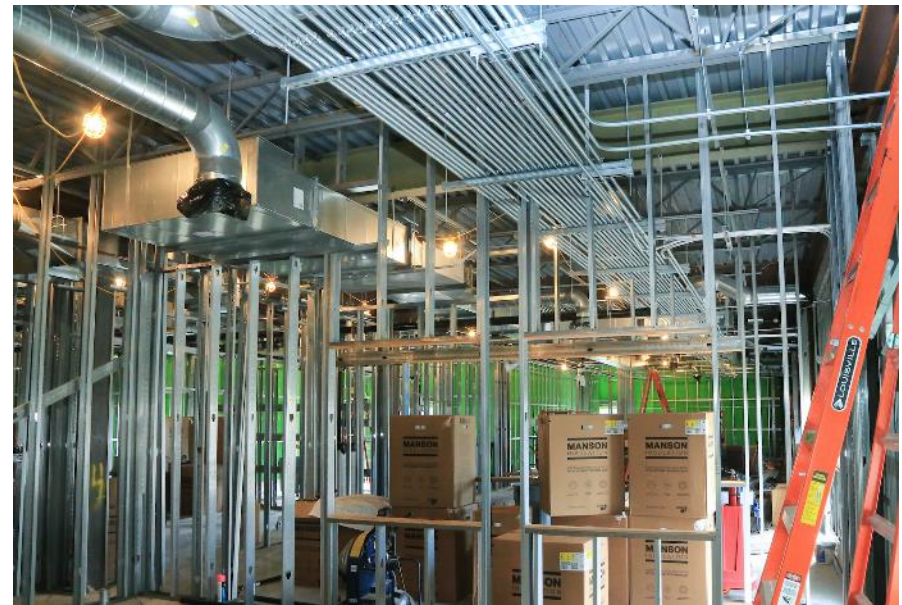




# Vehicle Maintenance Facility

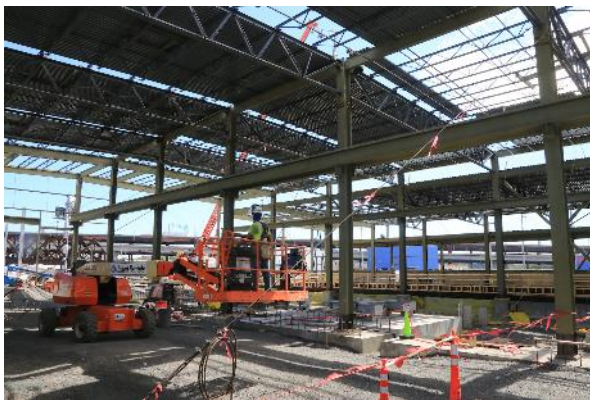


- Approximately 65 percent complete
- Overhead Contact System (OCS) posts and lighting foundations in place
- Transportation Building interior rough in work is advancing
- Installation of communications equipment to start in September





# Vehicle Maintenance Facility con't





# Viaduct Construction

- Only 8 of 83 viaduct spans awaiting steel placement
- 110-foot steel girders expected to arrive this week for the Community Path



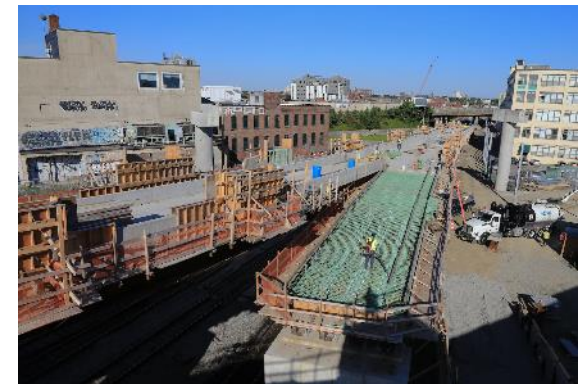
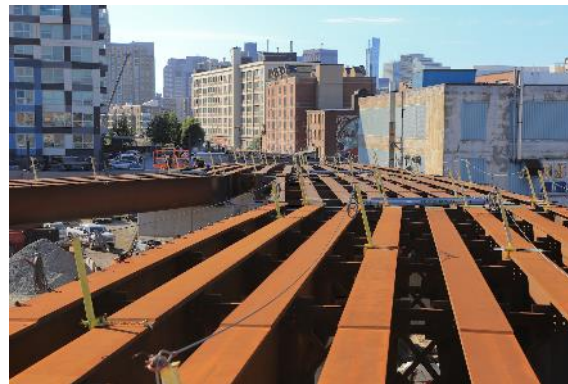


# Viaduct Construction - Lechmere

- Weekend steel placement continues between Gilmore Bridge and East St.
- Like most other areas, crews are working 6 days a week
- Viaduct sections in various stages of development



# Viaduct Construction - Boston Engine Terminal





# Washington St. Construction

- Drainage work continues as does work on pedestrian walkways
- Underpass expected to fully open by the end of summer





# Medford St. Bridge Modification



- Retaining wall MW-36.3 H-piles in place south of the Medford St. Bridge
- Abutment construction continues



June 2020



June 2020



July 2020



# Medford St. Bridge Modification (Cont)



- Retaining wall MW-36.3 H-piles in place south of the Medford St. Bridge
- Abutment construction continues



July 2020



**massDOT**  
Massachusetts Department of Transportation





# School St. Bridge Modification



- Power line issues are a challenge in this area
- Work will advance as earthen ramp removed from along Montrose St.



# Lowell St. Bridge Modification



- Modifications well underway as we replace old abutment with new one set further back into hill side





# Cedar St. Bridge Modification

- Safety notch to be incorporated into existing abutment



# Broadway Bridge Construction



- Punchlist item construction continues
- Targeting full opening before fall



**massDOT**  
Massachusetts Department of Transportation





# College Ave. Bridge



# Retaining Wall Construction- West Side

- 1 more month of soldier pile installation expected for walls
- Begin removing earthen platform along Montrose in August
- Retaining wall panel installation to follow
- Some drainage work awaiting advancement of walls



McGrath to Walnut St.



Sycamore to Central St.



Cedar to Broadway



# Retaining & Noise Wall Construction- East Side



- Steel noise wall panels have started being placed at night
- Posts now in place for wall near Granville & Morton Ave.



School St. to Sycamore St.



North of Broadway



North of College Ave.



# Outreach – Hotline Responses

- **1,439** Inquiries thru Hotline, e-mail or direct contact with outreach staff project to date. **51** contacts received in July.
- **1,273** actions closed out





# Community Connection Team

- Delivered donated home furnishings to family identified by the Medford Family Network
- Currently hosting a toiletries & Food Drive



Project SOUP, founded in 1969, is a food pantry and soup kitchen located in East Somerville. Their mission is to provide healthy, wholesome groceries and meals as a means of ending food insecurity in Somerville.

## GLX Community Connection Team Toiletries & Food Drive

Desired items:

- |                    |              |
|--------------------|--------------|
| - Toothpaste       | -Coffee      |
| -Shampoo           | -Olive Oil   |
| -Soap              | -Dried goods |
| -Toilet Paper      | -Tea         |
| -Diapers           | -Nuts        |
| -Laundry Detergent | -Condiments  |
- \*cash donations will be accepted, drop off to Mary Grace Bertazzoni & Alanna MacDonald\*

**July 27th - Aug 7th**

### DROP OFF LOCATIONS

- GLXC Office Lobby 200 Inner Belt
- GLXC Field Office 35 Charlestown
- Consigli Trailer



**massDOT**  
Massachusetts Department of Transportation



# Q & A

