



# GREEN LINE EXTENSION PROJECT



**massDOT**  
Massachusetts Department of Transportation

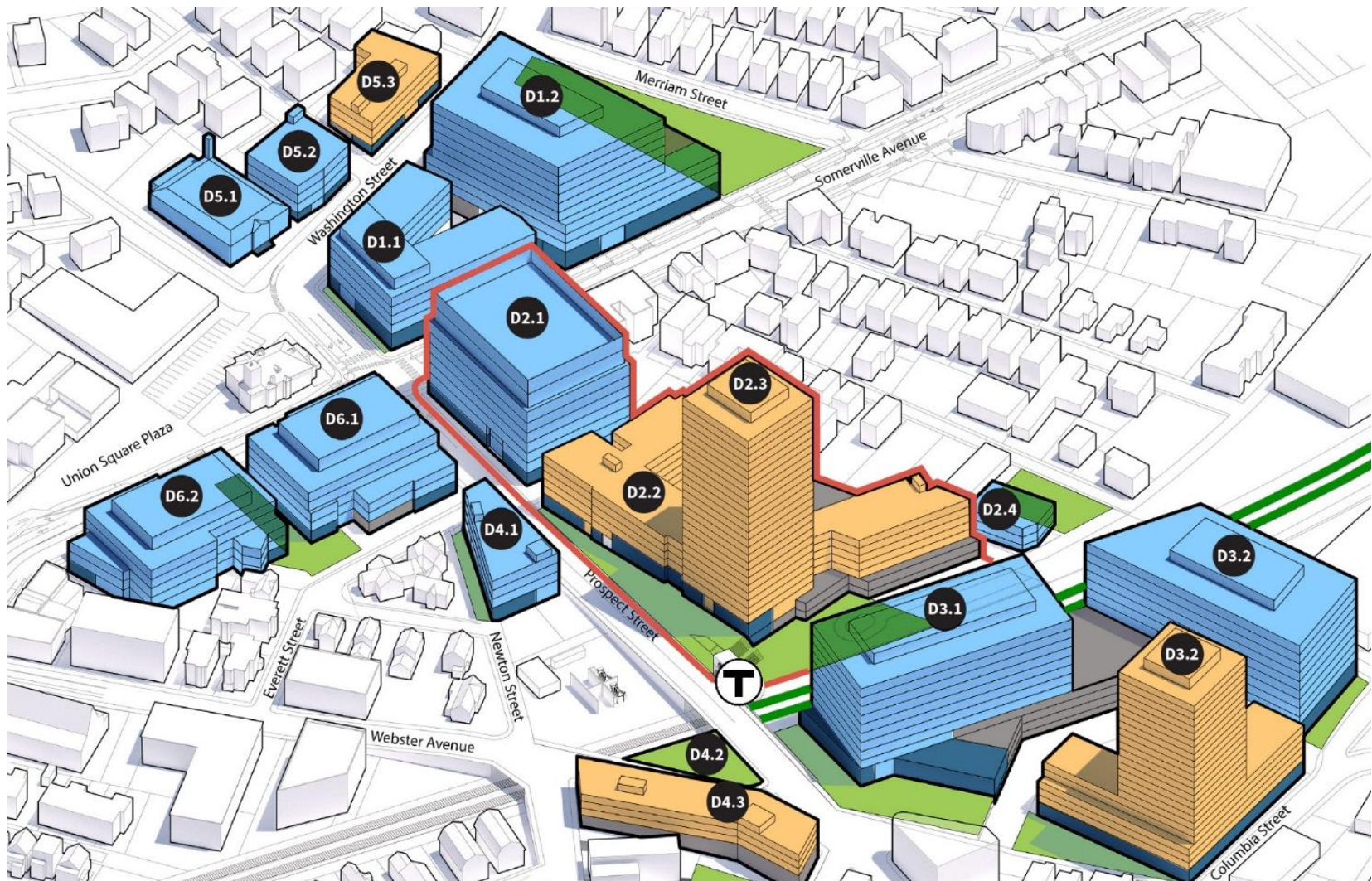


- I. Safety & Introduction**
- II. GLX-PMT Update**
- III. GLX-C – Construction & Design Update**
- IV. Conclusion**

## GLX-MBTA Update

Terry McCarthy, MBTA

- GLX General Public Meeting – January 2019
- CWG 2019 Meeting Schedule
- Union Square Station Design Status
- Latest Schedule for Bridge Closures
- Ongoing Maintenance of Traffic/Bus Operations Planning
- December 4, 2018, Holiday Gathering?

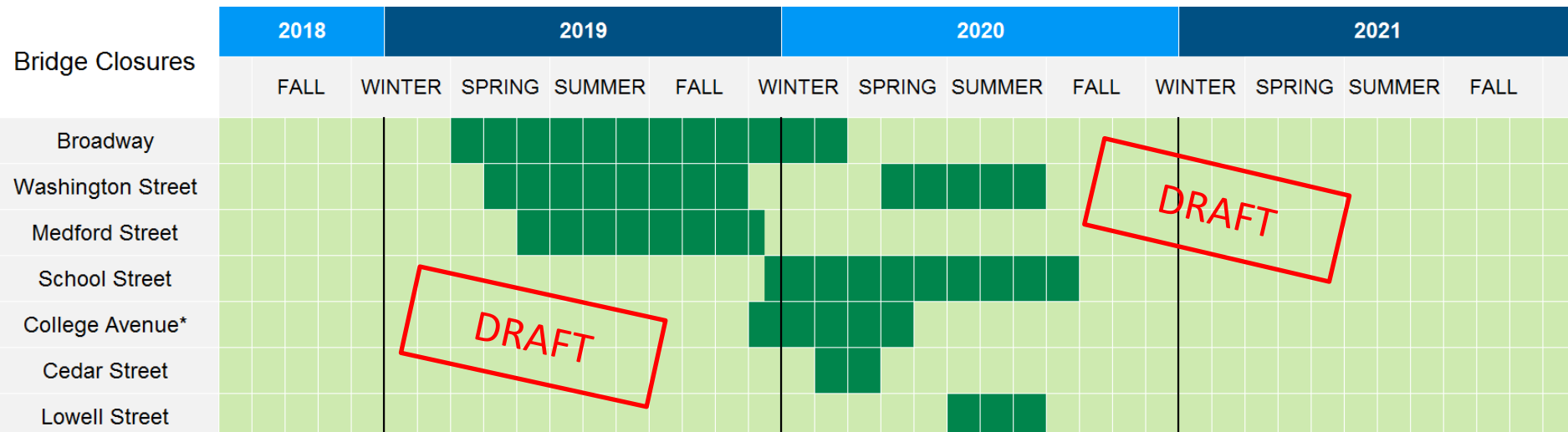


# CWG Meeting Schedule 2019

Month/Day/Year			Time		
January	8,	2019	8:30 AM	to	10:00 AM
February	5,	2019	4:00 PM	to	5:30 PM
March	5,	2019	8:30 AM	to	10:00 AM
April	2,	2019	4:00 PM	to	5:30 PM
May	7,	2019	8:30 AM	to	10:00 AM
June	4,	2019	4:00 PM	to	5:30 PM
July	2,	2019	8:30 AM	to	10:00 AM
August	6,	2019	4:00 PM	to	5:30 PM
September	3,	2019	8:30 AM	to	10:00 AM
October	1,	2019	4:00 PM	to	5:30 PM
November	5,	2019	8:30 AM	to	10:00 AM
December	3,	2019	4:00 PM	to	5:30 PM

- **SomerStreets Monster Mash Up Tabling Session On Somerville Ave.**
  - Sunday, Oct. 14 (between Union Square & Park Street)





\* Note: College Avenue Bridge traffic may be restricted at times but will remain open during construction.

- Local Cites and State Delegation – Cut Through Traffic Issues
- Reboot Your Commute
- Public outreach within Essex, Suffolk, and Middlesex Counties
- 96 Neighboring City/Town Municipalities
- 84 Media Outlets
- 29 Hospitals and Medical Facilities
- 26 Colleges/Universities
- In Process Chamber of Commerce and Large Employers Database

## Mass DOT Highway Division - District 4

- VMS Boards
- HOC – Overhead Signs from NH Border
- Apple & Google Database Updates – Detour Information
- Shared Outreach Efforts
- Temporary Diverted Truck Traffic Efforts

- Tobin Bridge ongoing Work
- Chelsea Off Ramp Work Spring 2019
- Alford St. Bridge Oct. 2018 – May 2019
- North Washington St. Bridge – Spring 2019
- Encore Casino Opening June 2019

## GLX-C Construction Update

Jeff Wagner & Mike Shea

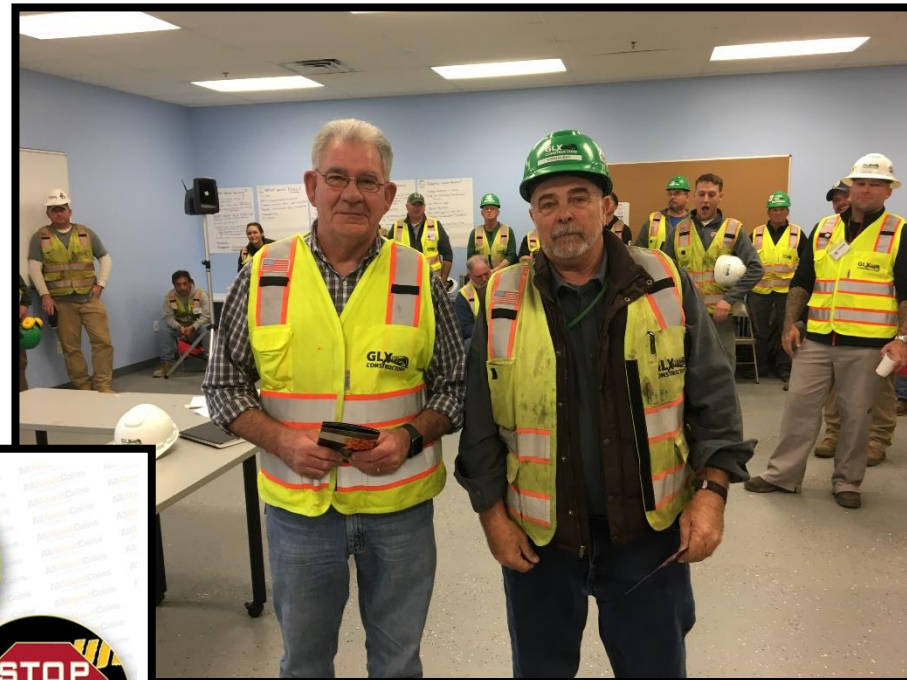
## Safety

- GLXC All Hands Safety Meeting on Oct. 30



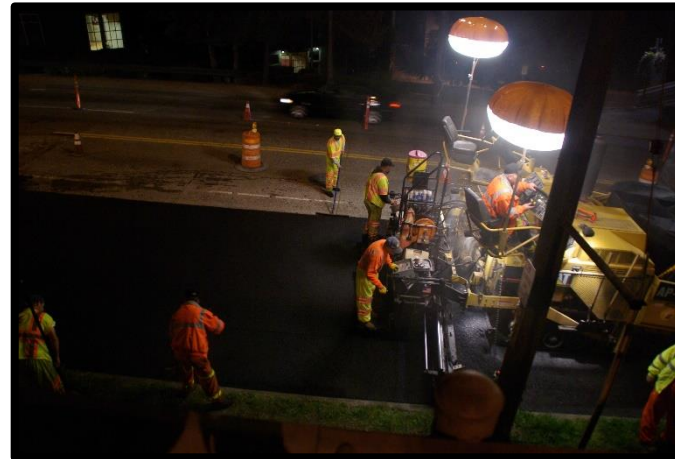
## Safety

### – Safety Recognition



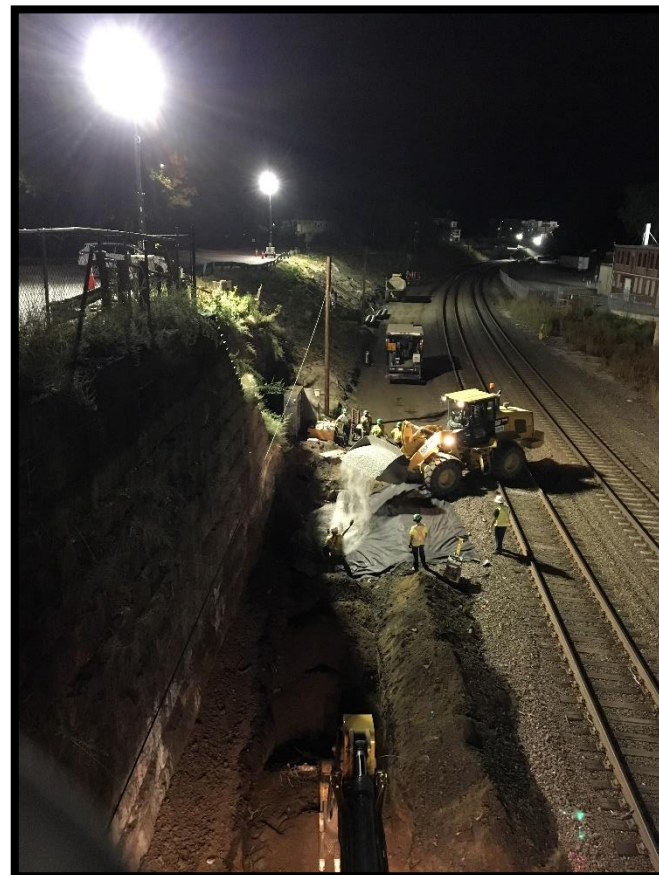
## New Equipment for Safe, Less Disruptive Operations (Shea)

- Lighting improvements



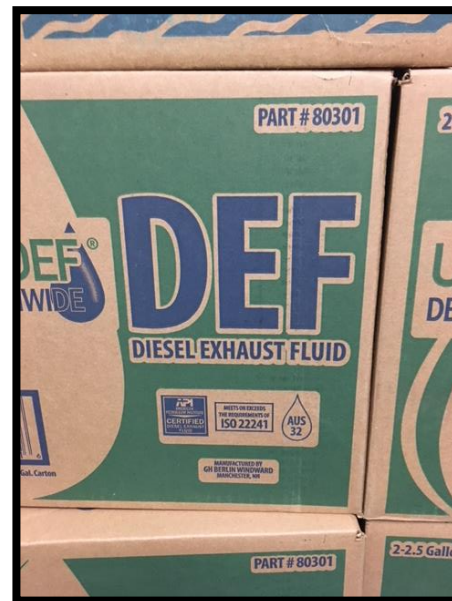
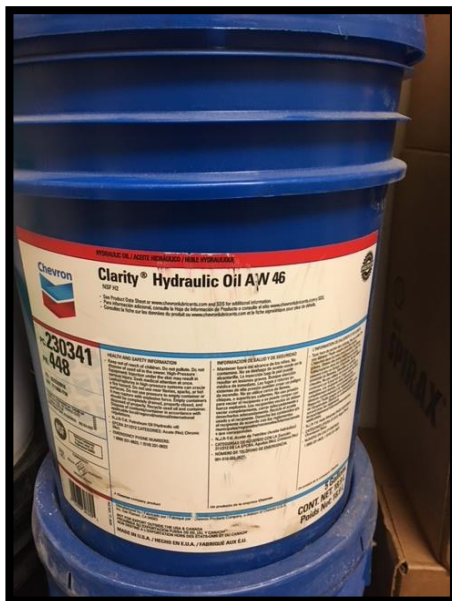
## New Equipment for Safe, Less Disruptive Operations

- Backup alarm improvements



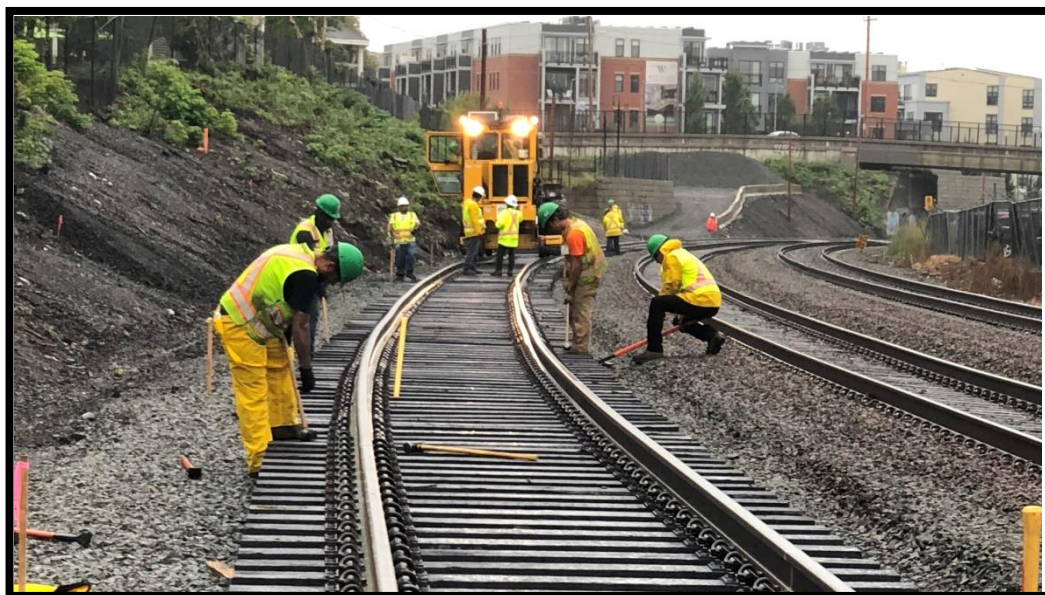
## New Products for Safe, Environmentally Friendly Operations

- Environmentally friendly hydraulic fluid
- DEF fluid promotes cleaner burning diesel engines
- Improved noise curtains



## Staffing

- 225+ personnel including GLXC and subcontractor staff



## Design

### Aerial Survey (Drone Flights)

- Upcoming Corridor-wide Drone Flights
  - Aerial Survey to aid Design and Construction
  - Result will be Stitched-together Ortho-mosaic Surface Model
- Flights will be capturing Aerial Imagery
  - Flights non-capturing personal space / property images, only rail corridor



## Example of Drone Capabilities

### Aerial Survey (Drone Flights)

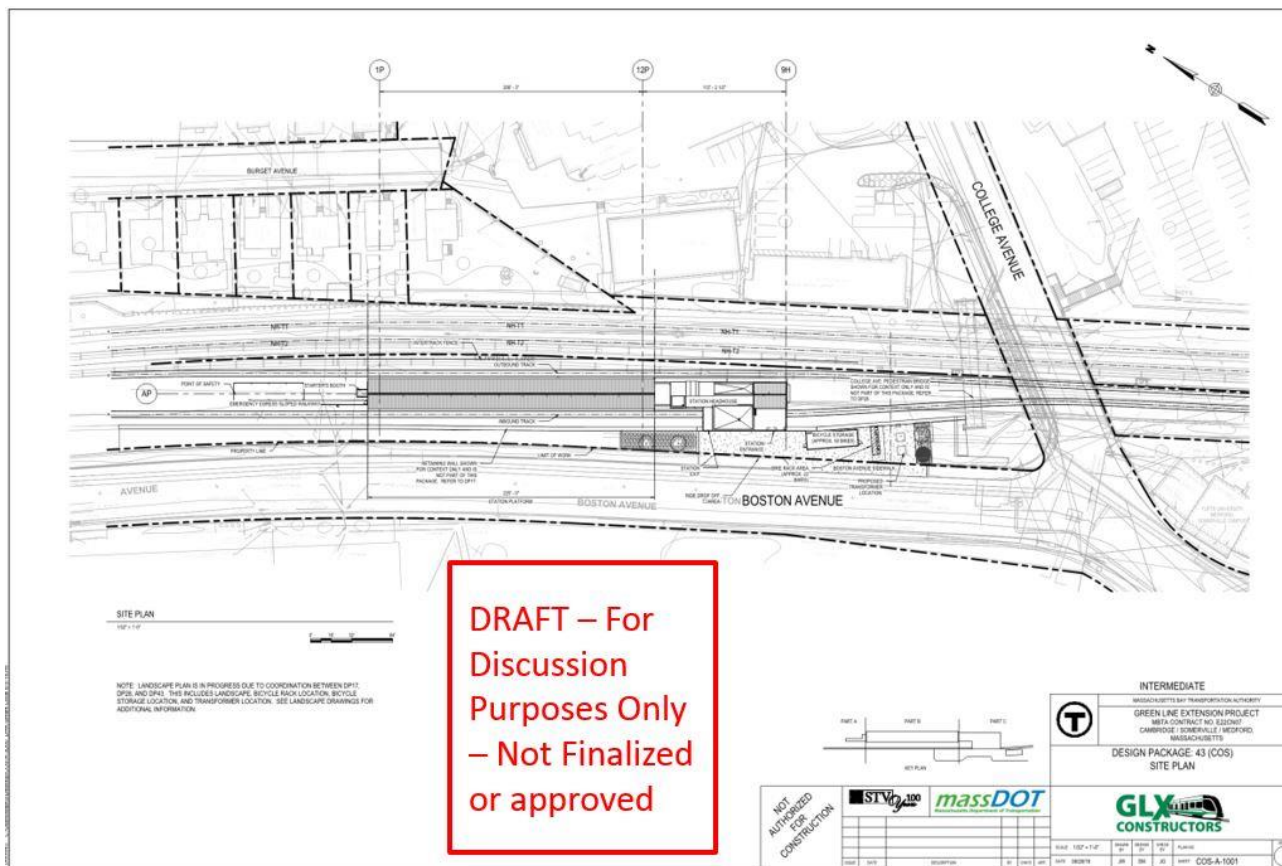


## Station Designs – College Ave. Station



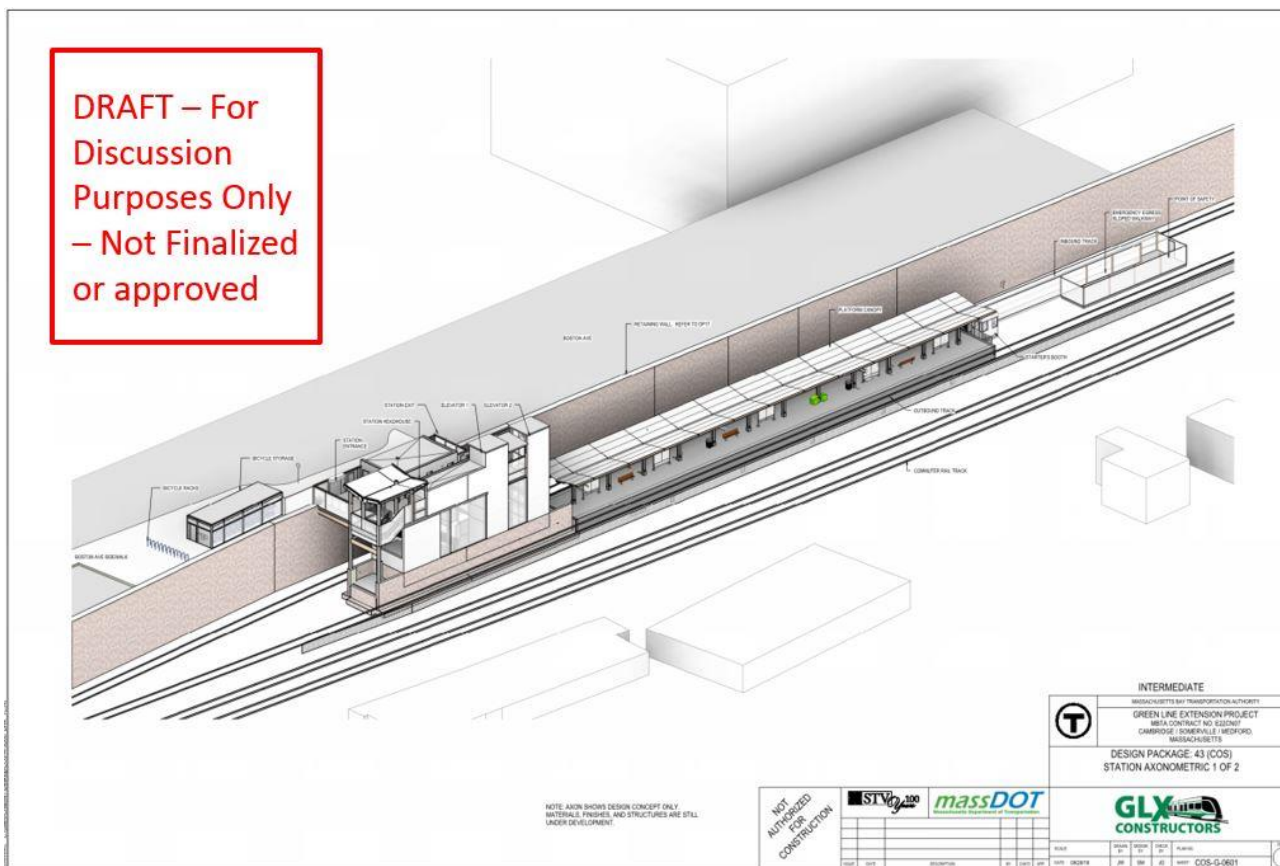
## Design

### - College Ave. Station



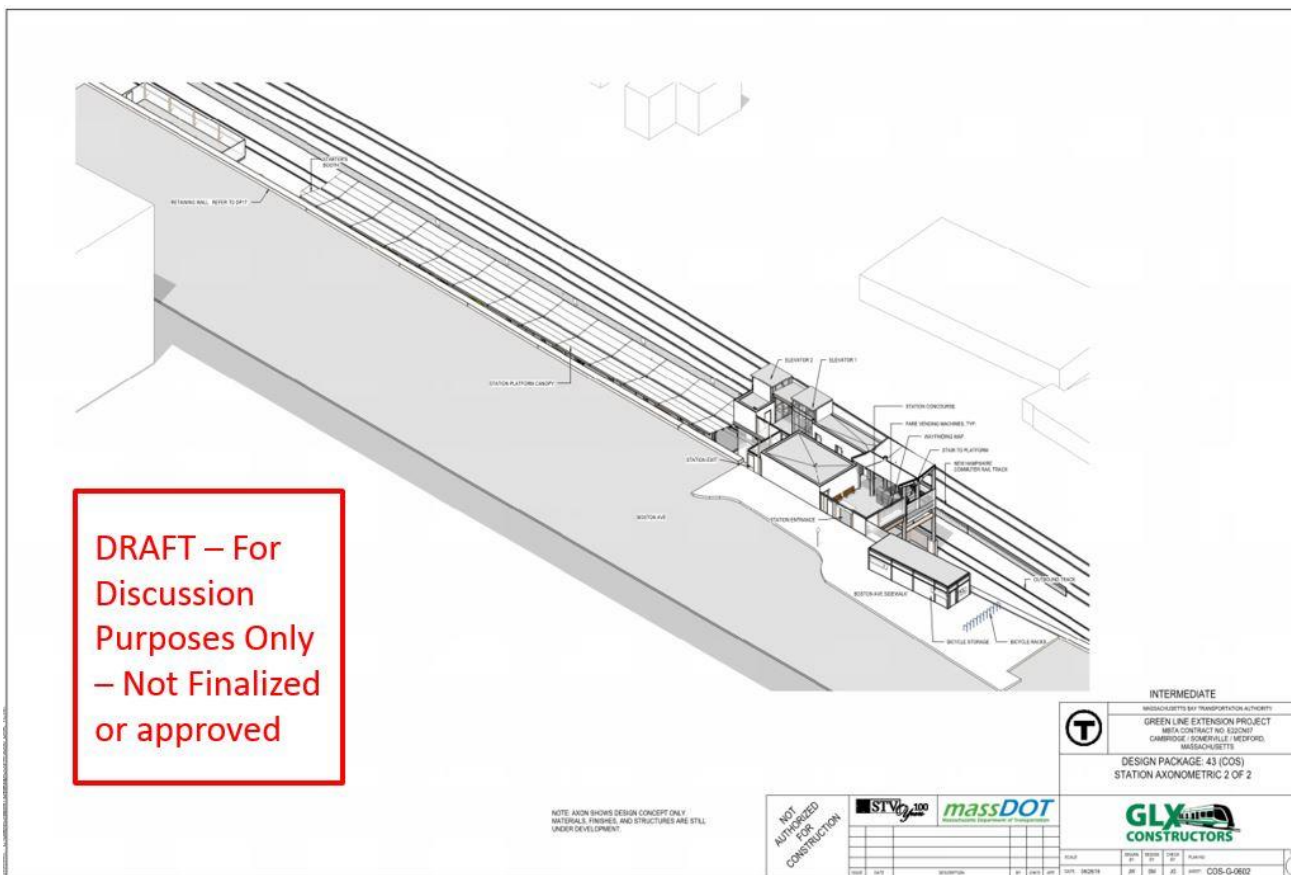
## Design

### - College Ave. Station



## Design

### - College Ave. Station



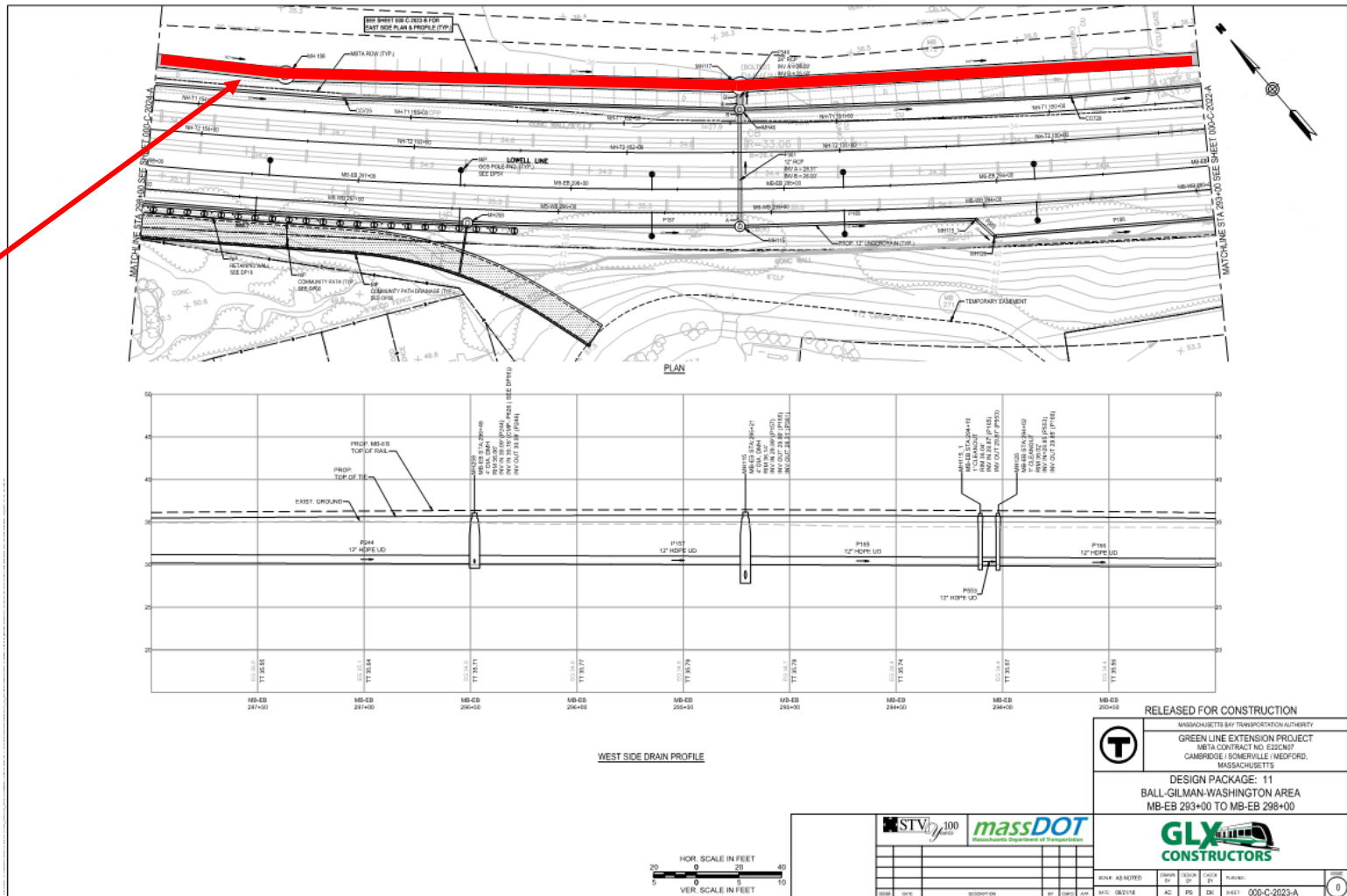
## Design

### Drainage Package 11 (DP11)

- DP 11 released for construction
- 11 miles of new stormwater drainage will be added along the alignment
  - o New system designed with 75+ year service life
- Project will utilize existing stormwater drainage system
- 4 main stormwater drainage tie ins to municipal systems: Cambridge, Somerville & Medford (2)

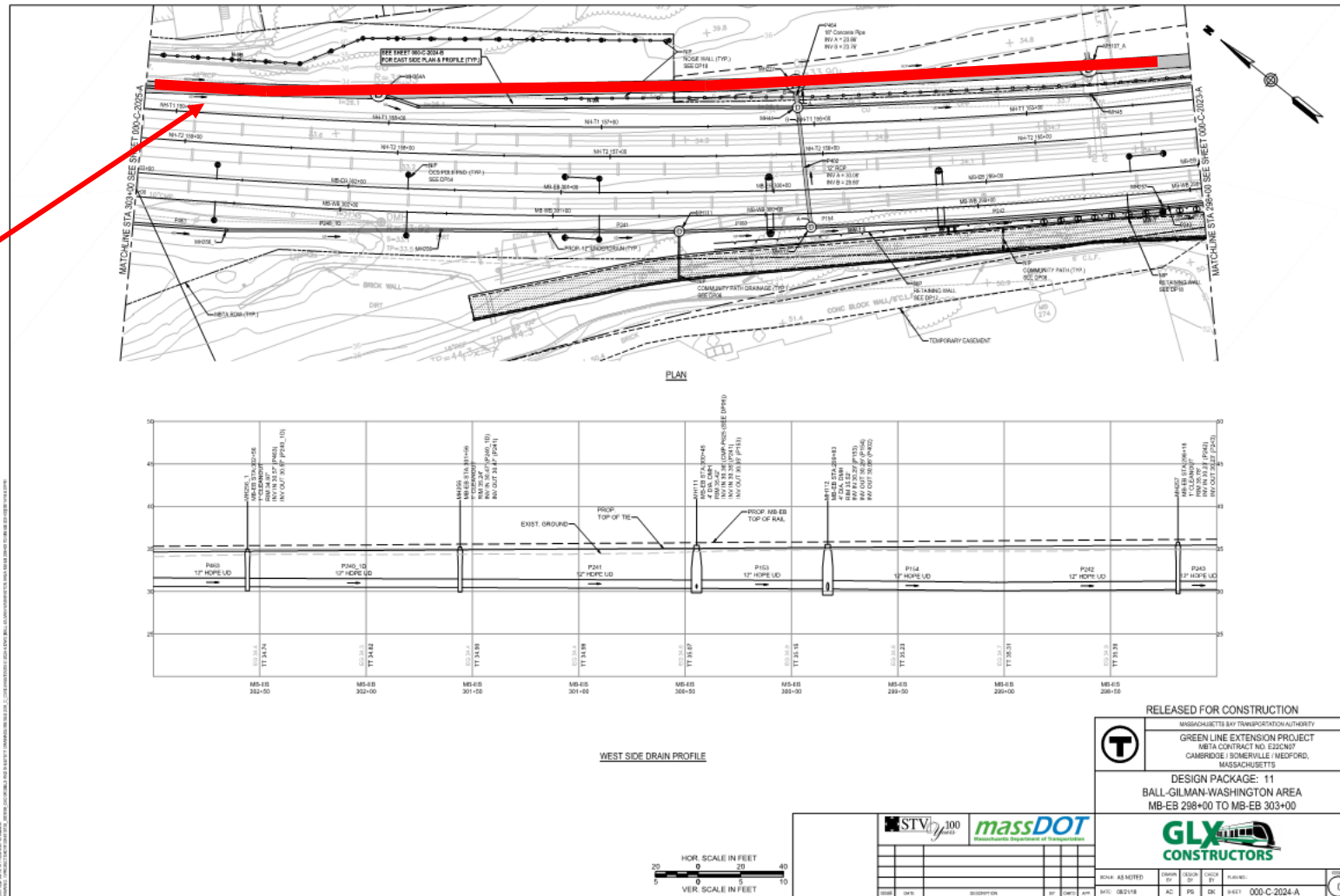
## Design

Drainage  
Line



# Design

## Drainage Line



## Track Shift

- 7,500' track placed between Lowell and Washington St. (NH 2 Interim Track)
- 3,000' track between Walnut St. and Washington St. (NH 1)
- 15,500 tons of ballast



Play Video IMG 2889

## Track Shift

- New Rail Line (Walnut St. to McGrath Hwy.)



April 2018



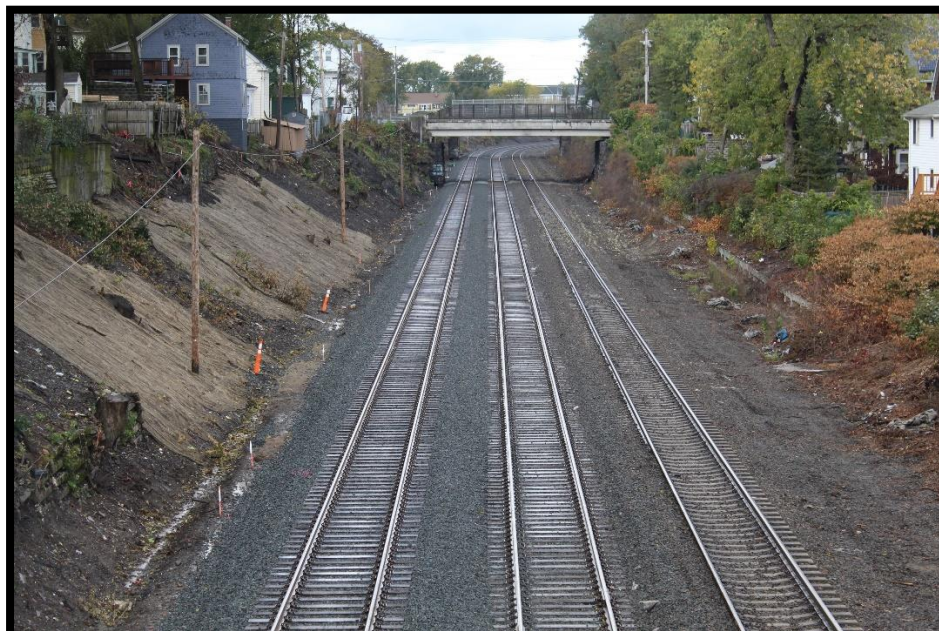
October 2018

## Track Shift

- New Rail Line (School St. looking north)



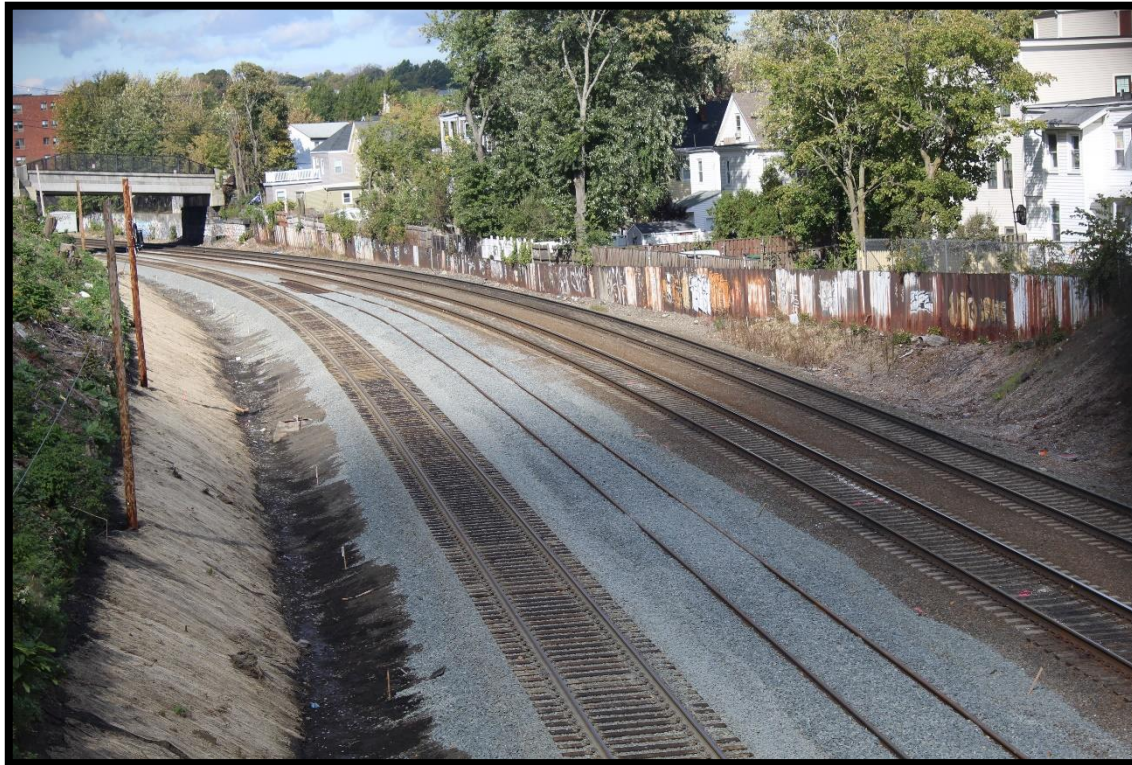
April 2018



October 2018

## Walls

- Wall removal along Gilman St. (between Walnut & McGrath Hwy.)
- Construction fence will be installed
- Drainage and retaining wall work to follow



## Construction Support

- Multi-Purpose Machine (MPM) coming to GLX project after use on project in Ontario, Canada
- Will be on GLX project for next 2 years



## Trash Removal

- With track shift trash removal will continue along east side of alignment
- Additional trash removal on west side of alignment will not progress until 2020 because of fall protection and operating rail line safety requirements



## Bridge Demolition & Construction

- Now targeting start date of late February to Mid-March 2019 for bridge closure
- 12 month demolition and construction schedule

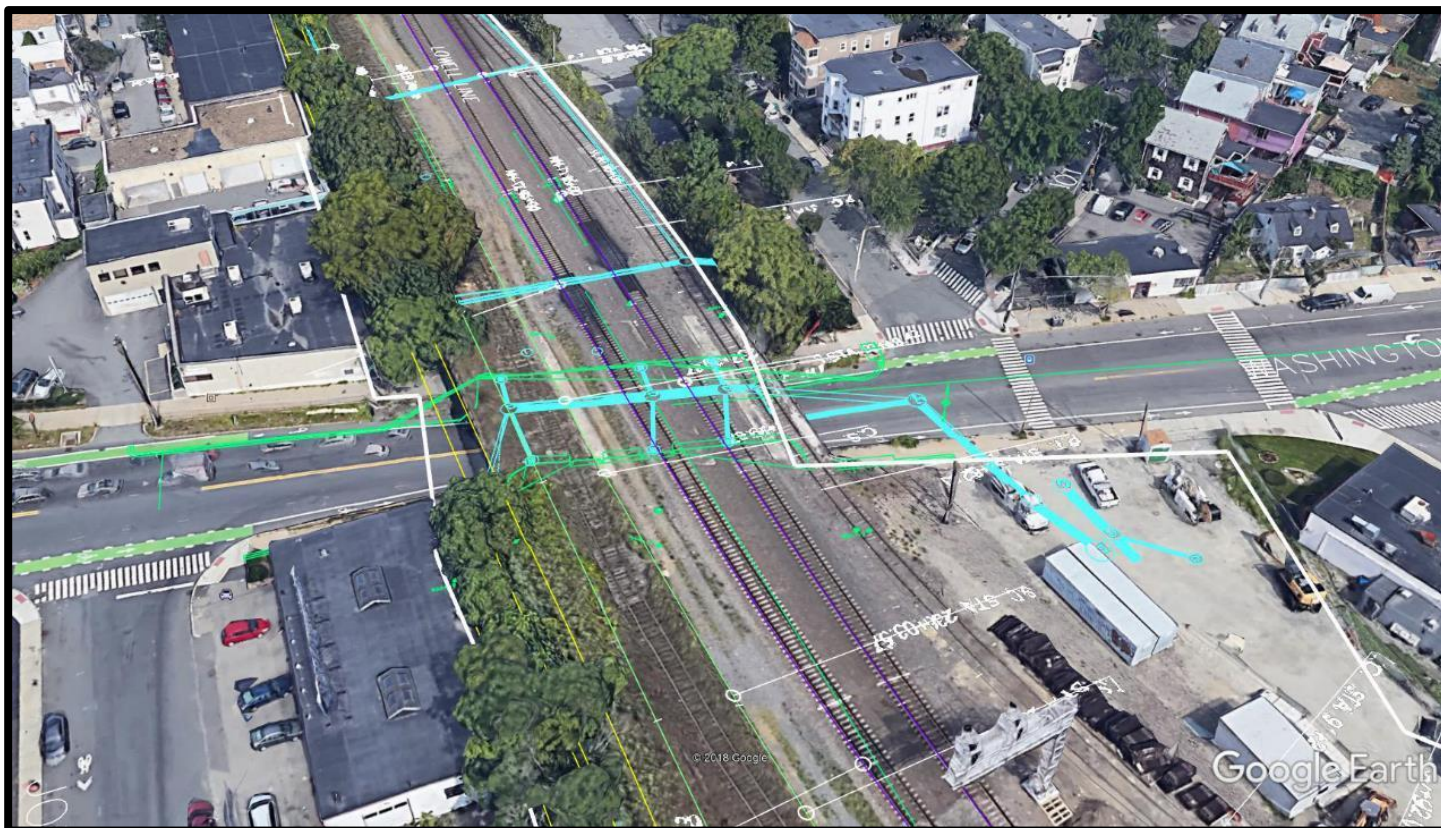


# Washington St. Bridge Update

## Target Dates:

**Phase I Closure – April 2019 to November 2019**

**Phase II Closure – Spring to Fall 2020**



## Demolition Update



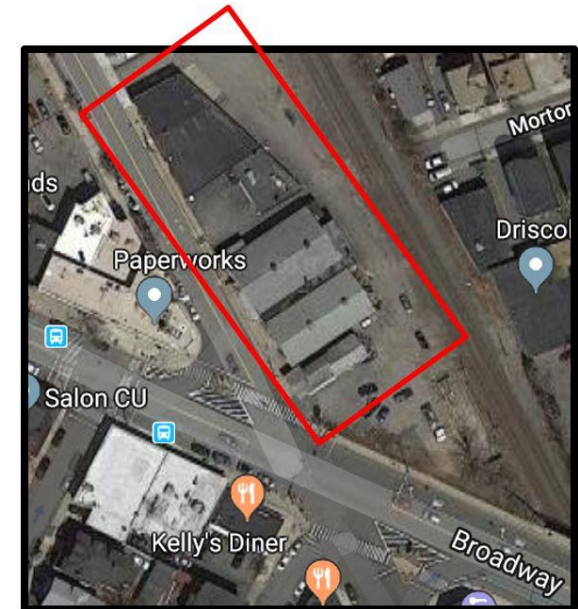
### 3<sup>rd</sup> Avenue

- Targeting late November 2018 including environmental abatement & debris removal



### Homans Building

- Targeting late November 2018 including environmental abatement & debris removal



### Ball Square

- Targeting December for completion of abatement & demolition.

# Discussion

Terry McCarthy, GLXC



# GREEN LINE EXTENSION PROJECT



**massDOT**  
Massachusetts Department of Transportation

