



GREEN LINE EXTENSION PROJECT



massDOT
Massachusetts Department of Transportation

1



GLX Community Working Group
Monthly Meeting
October 1, 2019

Agenda

Welcome & Introduction

- Terry McCarthy, GLX – MBTA

Construction Update

- John West, GLX-C






MBTA Update



massDOT
Massachusetts Department of Transportation



Local, Commuter, & Regional Traffic



GLX Bridge Update

New Timing - Washington St. Bridge Closure

NEW TIMING:
The Washington Street Bridge / Underpass (currently closed for construction) near McGrath Highway in East Somerville will remain closed to vehicular traffic this winter (2019/2020). The bridge is expected to permanently reopen to vehicular traffic in April of 2020—approximately 5 months earlier than planned.

ORIGINAL TIMING:
The original closure plan for the Washington Street Bridge / Underpass involved temporarily opening the underpass for the winter of 2019/2020 followed by a second closure of the vehicular roadway from April 2020 through summer of 2020.

✖ **Washington Street Bridge (Underpass) in East Somerville**
Closed April 8, 2019 to Spring 2020 *

See planned detour routes on following pages
For further info and constant updates go to www.greenlineextension.org
Or email us at info@glxinfo.com
For urgent matters, dial 1-855-GLX INFO or 1-855-459-4636

*Due to the nature of construction, all schedules are subject to change.

Green Line Extension (GLX) Project | 200 Inner Belt Road, Somerville, MA 02143
1 (855) GLX-INFO (459-4636) | www.greenlineextension.org

September 2019



Outreach / Notification

Recent Night Work at Lechmere, Brickbottom, Washington Street, Magoun, Broadway, Burget Ave.

- *Email blasts to 7,250 plus stakeholders in database*
- *Door to door leaflets to hundreds of homes in vicinity of work*
- *Municipal Robo-Calls*



Upcoming Events

GLX General Public Meeting

Tuesday, November 19, 2019

6:00 – 8:00 p.m.

East Somerville Community School

50 Cross Street

Somerville, MA 02145



GLX – Tufts Community Day



GLX – MBTA was pleased to participate and provide handout materials on the project.



massDOT
Massachusetts Department of Transportation





GLX-C Construction Update



Construction Update

Safety

- GLX-C Equipment Manager Mike Shea recognized for taking potentially life saving action.



Construction Update



Key Construction Activities through end of 2019

- **Relocate Commuter Rail Track to final position on eastern side of alignment**
 - 300' South of College Ave. to northern project limits (Mid to late fall)
 - Washington St. to Cedar (Late fall / early winter)
 - Cedar to north of Ball Square (Winter/Spring 2020)
- **Prior to track relocation we must:**
 - Complete drainage work including north of Broadway Bridge at Granville (Dec. 2019 – phase 2)
 - Complete noise wall and retaining wall panel placement (Dec. 2019 or nights following track shift)
- **Vehicle Maintenance Facility**
 - Foundation, underground utilities, retaining wall, and stormwater detention facility
- **Lechmere area/Boston Engine Terminal**
 - Steel in place throughout & deck placement underway
 - Work started on Lechmere station



Construction Update

Broadway Bridge

- Drainage, wall construction and bridge construction continues
- Frequent weekend and night work based on track shutdowns



Construction Update

Washington St. Rail Overpass

- Day & night work continues as crews install steel deck
- Will continue construction through winter and NOT reopen roadway in November 2019. Change allows us to complete work and reopen road permanently by April 2020 - five months earlier than originally planned.



Construction Update

Medford St. Bridge

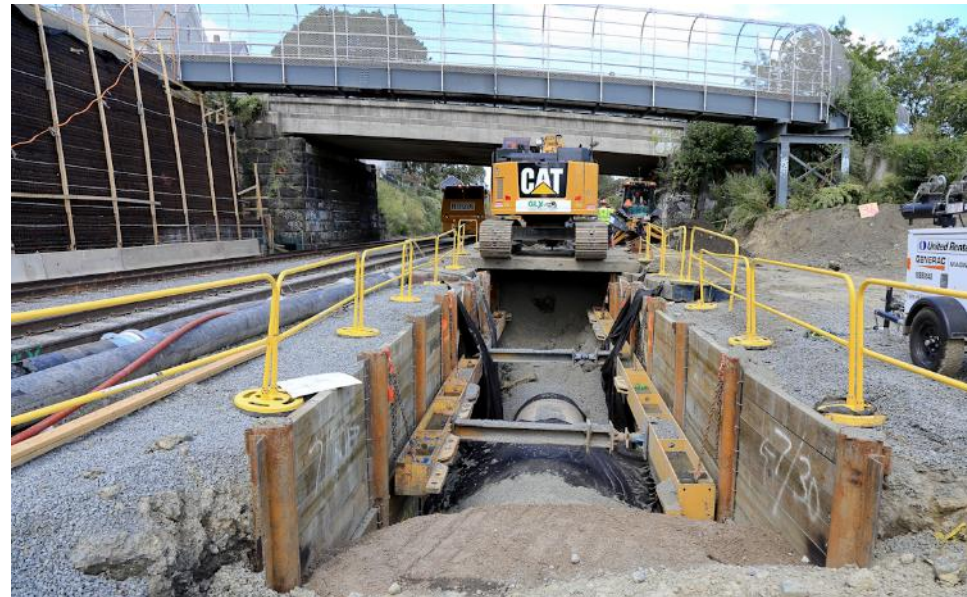
- Work on west abutment drilled shafts for foundation to start mid-October



Construction Update

School St. Bridge Closure

- School St. Bridge to close in early spring 2020
- This will likely overlap several months with Medford St. Bridge closure
- Working on detour routes for pedestrians and commuters



Construction Update

Vehicle Maintenance Facility

- Pile driving and saw cutting complete
- Building out sub-grade for foundation
- Retaining wall beginning to take shape



Construction Update

Work near Union Square Station

- Wall behind Target - MSE wall (UN-2) construction underway
- Work makes room for expanded track bed



Construction Update



Brickbottom Area

- Work along this part of the Fitchburg line includes viaduct construction, utility relocations and wall construction (N-3A/N-3B)
- Steel placement on viaduct began last month



Construction Update

Boston Engine Terminal (BET) Area

- Viaduct work continues with frequent night and weekend work



Construction Update

Lechmere Area

- Both drilling crews working between BET area and Water St.
- Crew currently near Superior Nut
- Actively pouring concrete columns and pier caps for viaduct and Community Path



Construction Update

Noise & Retaining Walls

Between Cross St. – Walnut St.

- ME-1/MCE-1 Retaining wall between Cross and McGrath Hwy progressing
- Noise Wall (N-6) awaiting panels
- Remaining steel sheeting in process of being removed



Construction Update

Noise & Retaining Walls – Drainage Between Medford St. – School St.

- MW-36.4 retaining wall foundation work continues
- Coordination with HS construction is going well



Construction Update

Noise & Retaining Walls – Drainage Between School St. – Central

- Noise Wall (N-7A & B) work to begin closer to School St. later this month
- 60" storm drain placement advancing to Sycamore



Construction Update

Noise & Retaining Walls - Drainage Between Lowell – Cedar St.

- Drainage work continues on Murdock St.
- Post installation for noise walls and retaining (N-10, ME-2, ME-2A & N-11) nearly complete with work focused on retaining wall at end of Department of Public Works building near Charles E. Ryan Rd.



Construction Update

Noise & Retaining Walls – Drainage Between Cedar St. - Broadway

- ME-2.1/ Noise Wall N-12 – posts in place
- Major drainage work continues near Wilson St.



Construction Update

Noise & Retaining Walls - Drainage Between Broadway – Harvard St.

- ME-2.4/Noise Wall N-14A & N-14B wall work to continue once drainage advances at Newbern and Granville Ave.



Construction Update

Noise & Retaining Walls

Between College Ave. – Winthrop St.

- Ready for placement of retaining and noise wall panels
- Track shift work starting weekend of Oct. 4 with work around-the clock until complete later in the month



Outreach

Boston Society of Civil Engineers Tour – Sept. 25

- Hosted 25 BSCES members for a site overview and walking tour
- Participants received credit for two professional development hours



Outreach

Gilman Square Block Party – Saturday, Sept. 28

- Spoke to approximately 90 neighbors about the project schedule, upcoming work, Community Path and future stations.



Outreach

Community Connection Team – ‘Detour’ Road Race benefitting Somerville Homeless Coalition on Oct. 6



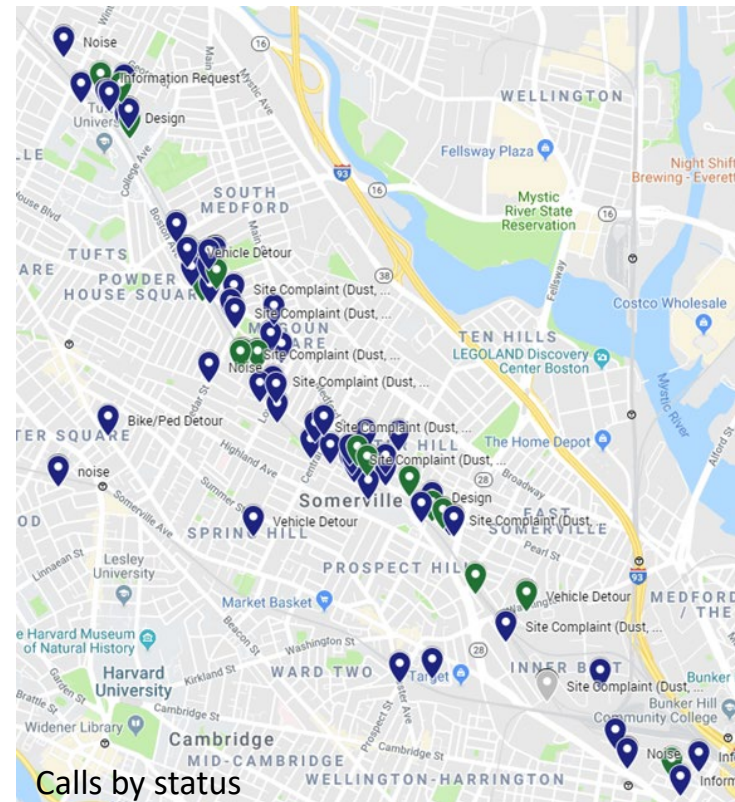
Outreach

GLX Hotline and Response to Comments/Requests

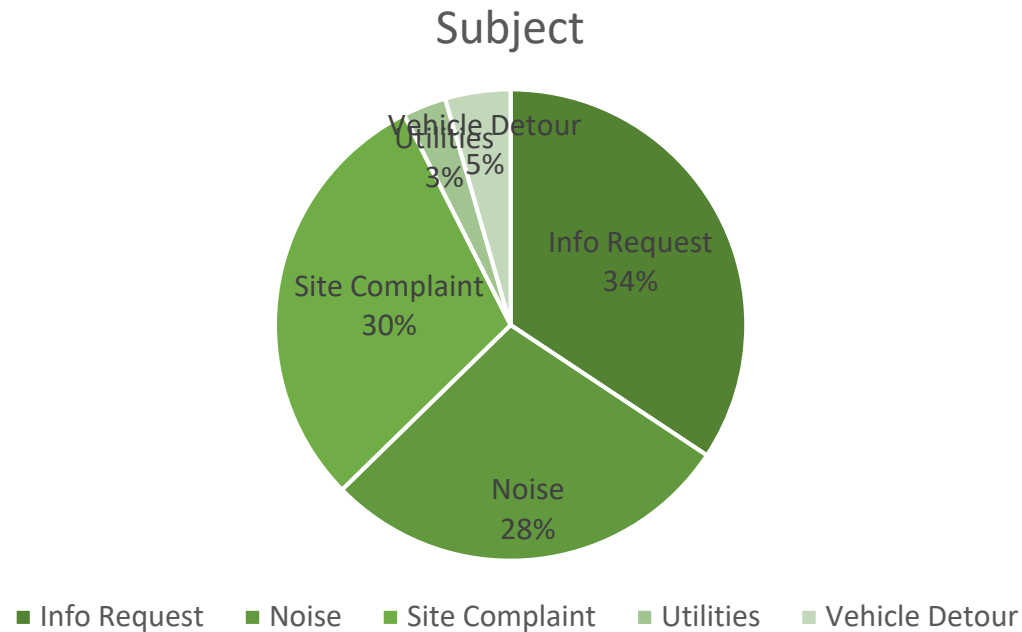
- 859 Inquiries thru Hotline, e-mail or direct contact with outreach staff (as of Sept. 27)
- 788 actions closed out.



GLX Hotline- June-September 2019



GLX Hotline June-Sept 2019



Discussion

Q & A

